

GV-N66128DP / GV-N66256DP

GeForce™ 6600 Graphics Accelerator

User's Manual

Rev. 101

12MD-N66128DP-101

Copyright

© 2005 GIGABYTE TECHNOLOGY CO., LTD

Copyright by **GIGA-BYTE TECHNOLOGY CO., LTD.** ("GBT"). No part of this manual may be reproduced or transmitted in any form without the expressed, written permission of **GBT**.

Trademarks

Third-party brands and names are the property of their respective owners.

Notice

Please do not remove any labels on VGA card, this may void the warranty of this VGA card.

Due to rapid change in technology, some of the specifications might be out of date before publication of this booklet.

The author assumes no responsibility for any errors or omissions that may appear in this document nor does the author make a commitment to update the information contained herein.

Table of Contents

1. Introduction	3
1.1. Features	3
1.2. Minimum System Requirement	3
2. Hardware Installation	4
2.1. Board Layout	4
2.2. Hardware Installation	7
3. Software Installation	9
3.1. Windows® XP Driver and Utilities Installation	9
3.1.1. Operating System Requirement	9
3.1.2. DirectX Installation	10
3.1.3. Driver Installation	12
3.1.4. Utilities on Driver CD	14
3.1.5. Taskbar Icon	16
3.1.6. Display Properties pages	19
3.1.7. nView Properties pages	23
3.2. Windows® 2000 Driver Installation	29
4. Troubleshooting Tips	30
5. Appendix	31
5.1. How to Reflash the BIOS	31
5.1.1. Reflash BIOS in MS-DOS mode	31
5.1.2. Reflash BIOS in Windows mode	31
5.2. Resolutions and Color Depth Table (In Windows® XP)	32

1. Introduction

1.1. Features

- Powered by **NVIDIA® GeForce™ 6600** Graphics Processing Unit (GPU)
- Supports AGP 8X
- Integrated with 128MB DDR memory (Only for GV-N66128DP)
- Integrated with 256MB DDR memory (Only for GV-N66256DP)
- Supports DirectX 9.0c
- Support AV / S-Video and HDTV output
- Supports TV-Out and D-Sub connectors
- Supports DVI-I connector

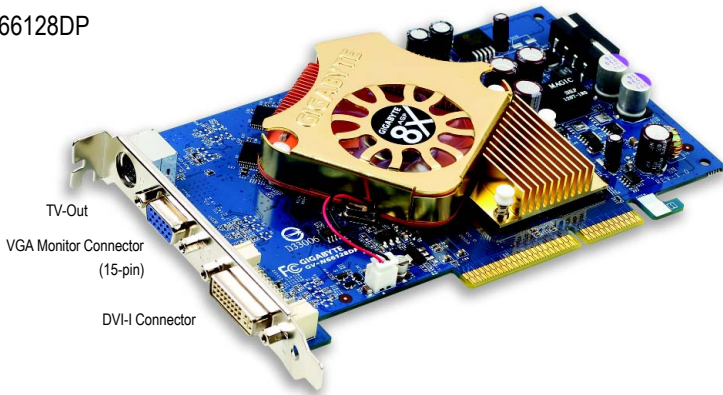
1.2. Minimum System Requirement

- IBM® or 100% PC compatible with Pentium® III 650MHz or AMD Athlon 650MHz class processor or higher
- One available AGP3.0 compliant slot or better
- Operating Systems Windows® 2000 / Windows® XP
- 64MB system memory
- 50MB of available disk space for full installation
- CD-ROM or DVD-ROM drive

2. Hardware Installation

2.1. Board Layout

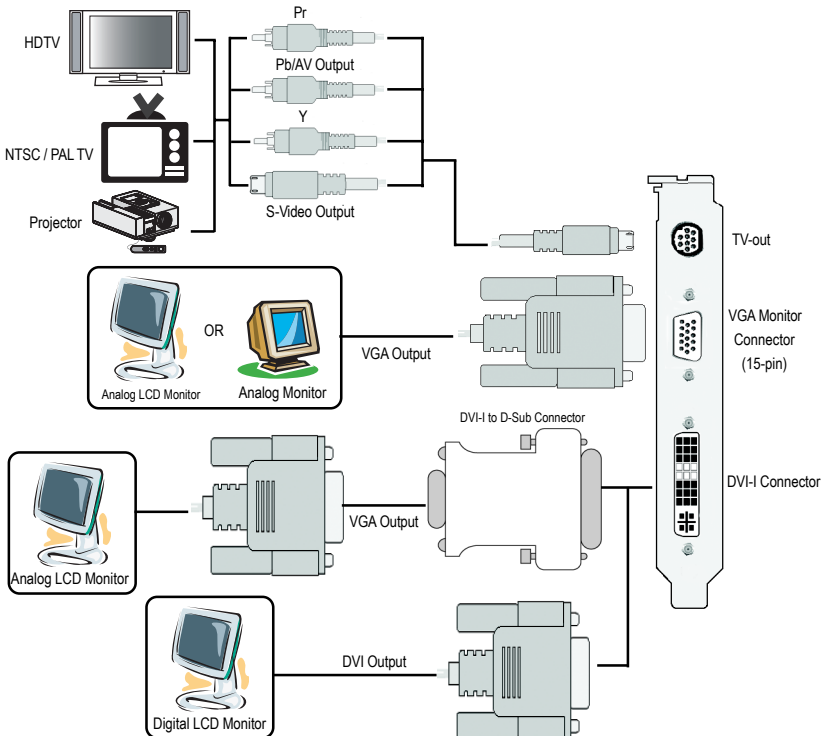
1) GV-N66128DP



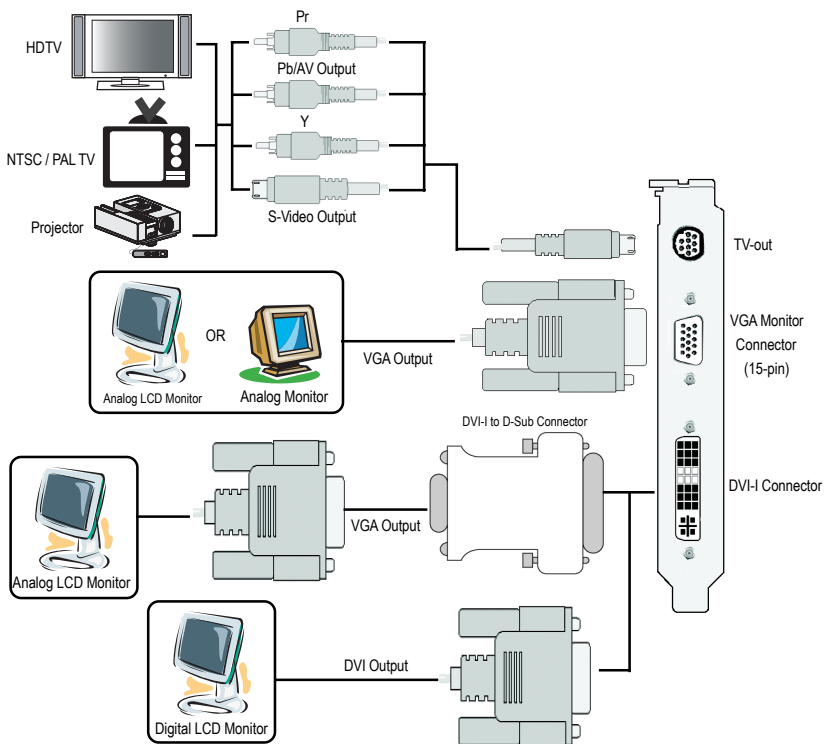
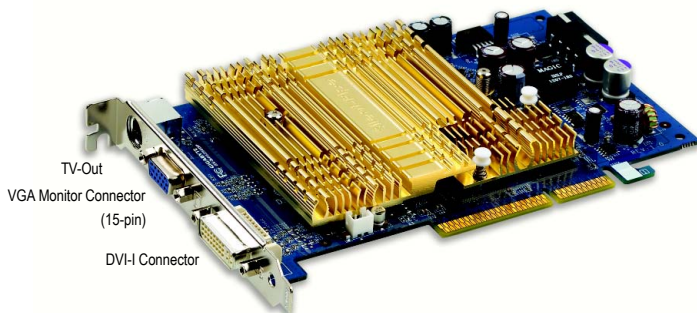
TV-Out

VGA Monitor Connector
(15-pin)

DVI-I Connector



2) GV-N66256DP





Expansion cards contain very delicate Integrated Circuit (IC) chips. To protect them against damage from static electricity, you should follow some precautions whenever you work on your computer.

1. Turn off your computer and unplug power supply.
2. Use a grounded wrist strap before handling computer components. If you do not have one, touch both of your hands to a safely grounded object or to a metal object, such as the power supply case.
3. Place components on a grounded antistatic pad or on the bag that came with the components whenever the components are separated from the system.

The card contains sensitive electric components, which can be easily damaged by static electricity, so the card should be left in its original packing until it is installed.

Unpacking and installation should be done on a grounded anti-static mat. The operator should be wearing an anti-static wristband, grounded at the same point as the anti-static mat.

Inspect the card carton for obvious damage. Shipping and handling may cause damage to your card. Be sure there are no shipping and handling damages on the card before proceeding.

⚡ **DO NOT APPLY POWER TO YOUR SYSTEM IF IT HAS BEEN DAMAGED ON THE CARD.**

⚡ **In order to ensure your graphics card working correctly, please use official Gigabyte BIOS only. Use none official Gigabyte BIOS might cause problem on the graphics card.**

2.2. Hardware Installation

Installing Your graphics card.

Now that you have prepared your computer, you are ready to install your graphics accelerator card.

To install your graphics accelerator card:

1. Power off the computer and monitor, then disconnect the display cable from the back of your computer.

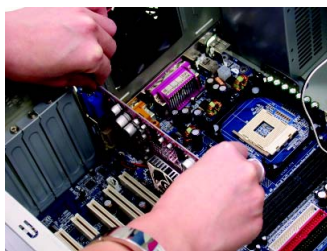


2. Remove the computer cover. If necessary, consult your computer's manual for help in removing the cover.

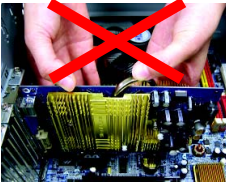
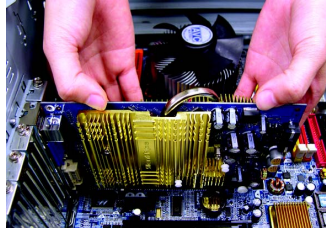


3. Remove any existing graphics card from your computer.

Or, if your computer has any on-board graphics capability, you may need to disable it on the motherboard. For more information, see your computer documentation.

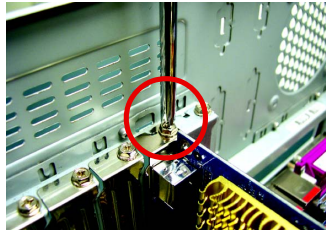


4. Locate the AGP slot. If necessary, remove the metal cover from this slot; then align your graphics card with the AGP slot, and press it in firmly until the card is fully seated.



When installing the graphics card, do not push down the heat pipe. This may displace the heat pipe and cause bad contact between the GPU and thermal pad as well as affect the heat dissipation. To avoid system instability, do not touch the graphics card when it is running.

5. Replace the screw to fasten the card in place, and replace the computer cover.



After installation, please connect the power cable to your graphics card, or the system will not boot.

6. Plug the display cable into your graphics card; then turn on the computer and monitor.



To Flat Panel Display



To VGA Monitor



To TV or VCR



You are now ready to proceed with the installation of the graphics card driver. For detailed instructions, select your operating system from the list below.

3. Software Installation

In this manual, we assume that your CD-ROM Drive letter to be Drive D:

The installation of Windows® 2000 / Windows® XP drivers is very simple. When you insert the driver CD into your CD-ROM drive, you can see the AUTORUN window (if it does not show up, run "D:\setup.exe"). Then you can follow the guides to setup your graphics card driver. (Please follow the subsection 3.1.3 "Driver installation" to install the driver for your graphics accelerator.)

3.1. Windows® XP Driver and Utilities Installation

3.1.1. Operating System Requirement

- When loading the graphics card drivers for the system, please make sure your system has installed DirectX 9 or later version.
- If you install the graphics card drivers for the motherboard, which consist of SIS or VIA chipsets, please install the appropriate driver program for that motherboard. Or please contact your motherboard nearest dealer for motherboard driver.

3.1.2. DirectX Installation

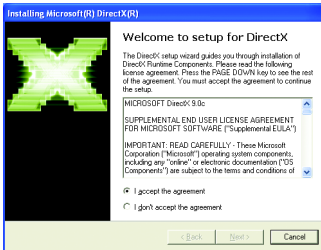
Install Microsoft DirectX to enable 3D hardware acceleration support for Windows® 2000 or Windows® XP to achieve better 3D performance.

- 📌 Note: For software MPEG support in Windows® 2000 or Windows® XP, you must install DirectX first.

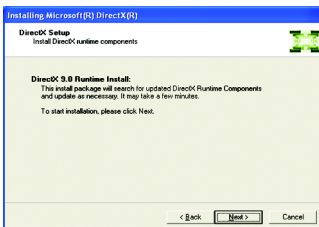


Step 1. When autorun window show up, click **Install DirectX 9** item.

Click "Install DirectX 9" item.

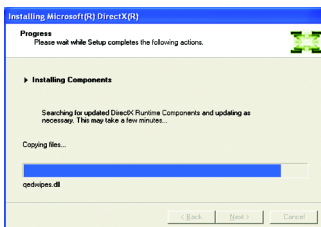


Step 2. Choose **I accept the agreement** and Click "Next" button.

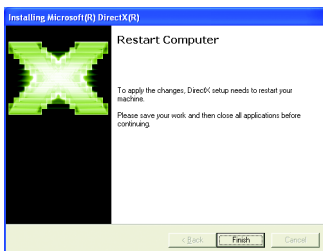


Step 3. Click "Next" button.





Installing the components.



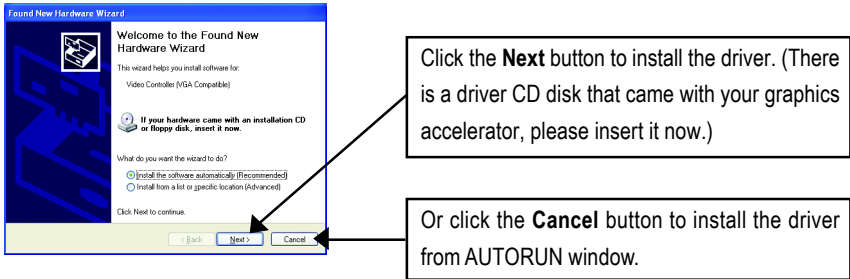
Step 4. Click "Finish" to restart computer.
Then the DirectX 9 installation is completed.

3.1.3. Driver Installation

A. New hardware found

After the graphics card is inserted into your computer at the first time, the windows will automatically detect a new hardware in the system and pop out a "New Hardware Found" message. The following is the step-by-step installation guide.

Step 1: Found new hardware wizard: Video controller (VGA Compatible)

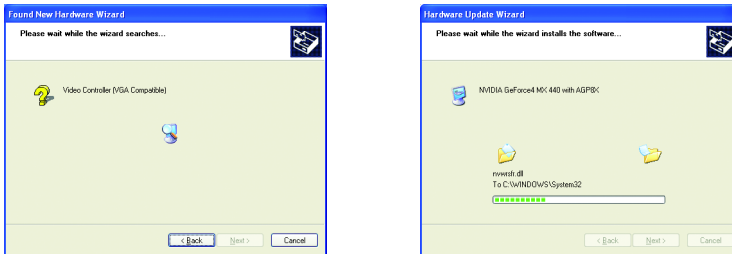


Click the **Next** button to install the driver. (There is a driver CD disk that came with your graphics accelerator, please insert it now.)

Or click the **Cancel** button to install the driver from AUTORUN window.

Step 2: Found new hardware wizard: Searching and installing

The wizard will search for the driver and install it automatically.



Step 3: Found new hardware wizard: Finish

Click the "Finish" button to finish the installation.



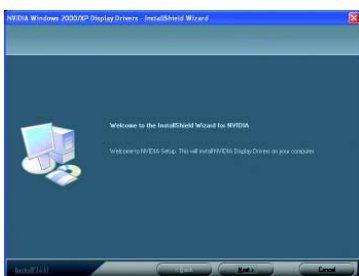
B. Driver installation (Autorun Window)

Insert the driver CD disk into your CD-ROM, and then you can see the AUTORUN window. If it does not show up, please run "D:\setup.exe".

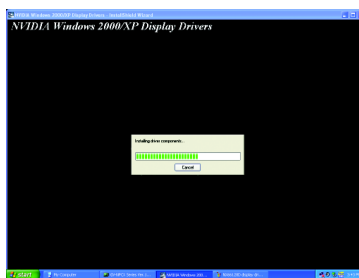


Step 1. When autorun window show up, click **Install Display Driver** item.

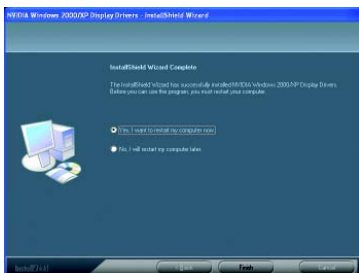
Click "Install Display Driver" item.



Step 2. Click the **Next** button.



Windows installing the components.



Step 3. Click the **Finish** button to restart computer. Then the driver installation is completed.

3.1.4. Utilities on Driver CD

Insert the driver CD disk into your CD-ROM, and then you can see the AUTORUN window. If it does not show up, please run "D:\setup.exe".

- Install GIGABYTE Utilities (V-Tuner 2):



Step 1. When autorun window show up, please click the **Utilities** item.

Click the **Utilities** item.



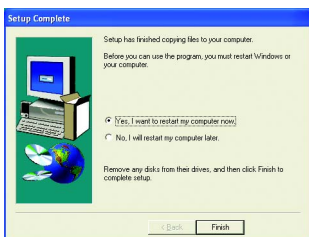
Then click the **GIGABYTE Utility** item.



Step 2. Click "Next" button.



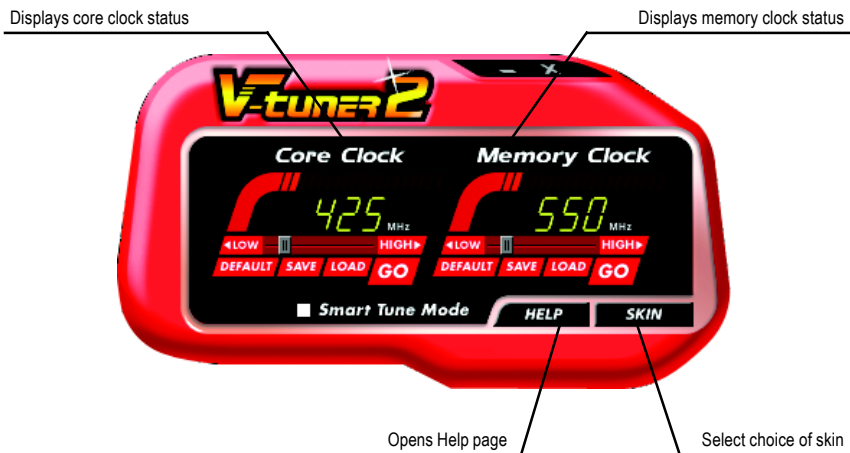
Step 3. Enter your name and company.




Step 4. Click "Finish" button to restart computer. Then the V-Tuner2 installation is completed.

V-Tuner 2

V-Tuner 2 lets you monitor the working frequency of the graphic engine and video memory (Core Clock and Memory Clock).



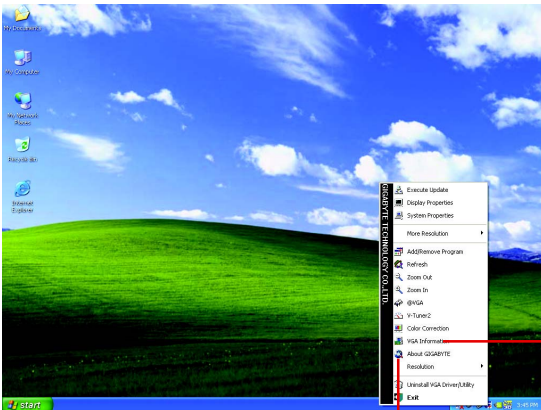
3.1.5. Taskbar Icon

After installation of the display drivers, you will find a GIGABYTE icon  on the taskbar's status area. Right-clicking this icon opens the GIGABYTE control panel, showing a menu composed of shortcut of the graphics card's enhanced and other functions.

You may click the **Display Properties** item, and then click **Settings**. Click **Advanced** after clicking **Settings**. Click the appropriate tab to change your display settings.



Right click the icon.

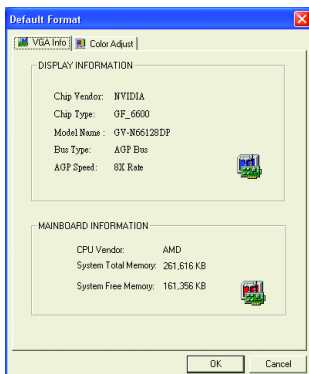


Click the **VGA Information** item into the "VGA Info" and "Color Adjust" tabs.

You can link to GIGABYTE website for updated information about the graphics accelerator, latest drivers, and other information.

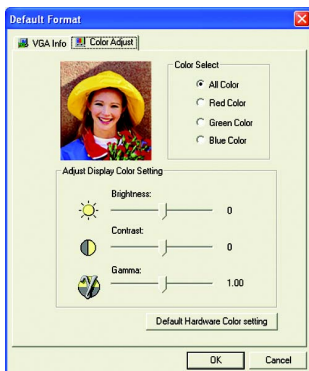
VGA Information


VGA Info lists the relevant information about your card.



Color Adjust

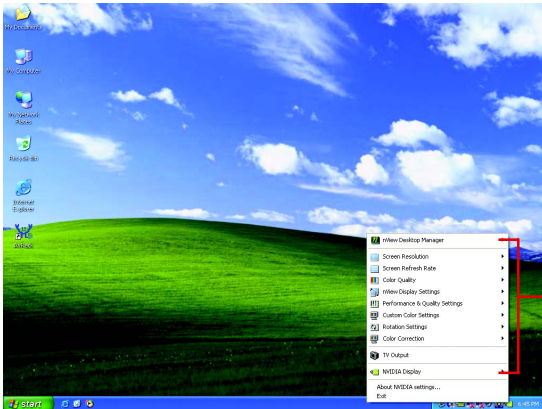
Color Adjust allows you to make color adjustments, such as brightness, contrast and gamma values for each or all of RGB colors.



After installation of the display drivers, you will find a NVIDIA icon  on the taskbar's status area. Click this icon to open the control panel.



Right click the icon.



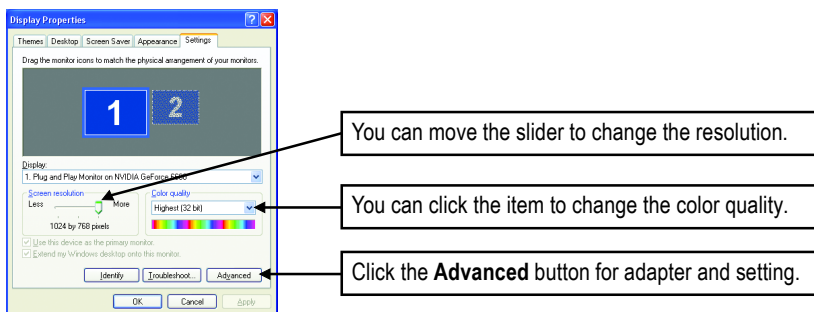
You can adjust the properties of the graphics accelertaor from here.

3.1.6. Display Properties pages

To access Display Properties pages, right-click the GIGABYTE icon on the taskbar and select **Display Properties** or right-click on Desktop and then select **Properties**. The **Display Properties** dialog box shows the information of display adapter, color, the range of display area, and the refresh rate.

Settings (Resolutions and Color depth for Windows)

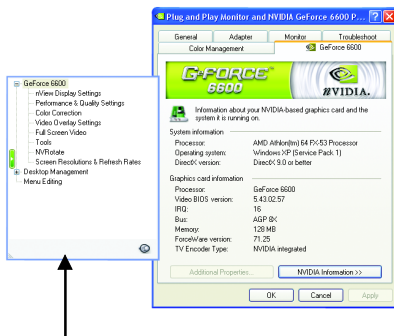
You may adjust the screen resolution and color quality settings in this dialog box.



To access more advanced options, click the **Advanced** button.

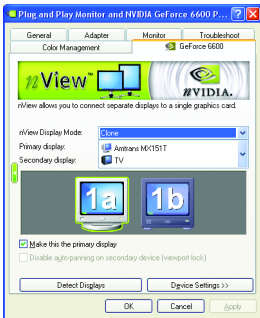
GeForce 6600 properties

After pressing the **Advanced** button in **Settings**, you'll see **Plug and Play Monitor on NVIDIA GeForce 6600 Properties** dialog box. Click the **GeForce 6600** tab. (You can also click the Nvidia icon on the taskbar and select **Nvidia Display** to access the GeForce 6600 properties page.)



You can select other properties from the pop-out menu.

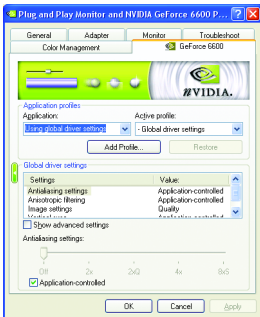
nView Display Settings properties



- nView allows you to connect separate displays to single graphics card.
 - nView Display mode: select your preferred nView display modes here. Options: Single display/ Clone/ Horizontal span/ Vertical span/ Dualview
 - Primary/Secondary display: select a single display or display pair. The selected display combination will appear in the graphical representation below.
 - Make this the primary display: Specifies that the display corresponding to the icon you selected above is the primary display.
 - Click Apply to apply settings or click OK to save settings.
- If TV is chosen as the display, you will need to select the proper TV format. To do this, click "Device Setting" followed by "Select TV format". Select the format for your television and then click "Apply" followed by "OK".

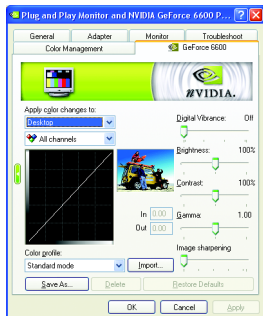
Display Matrix	Model	GV-N66128DP	GV-N66256DP
	CRT+TV	Yes	Yes
	CRT+DVI	Yes	Yes
	DVI+TV	Yes	Yes

Performance and Quality Settings properties



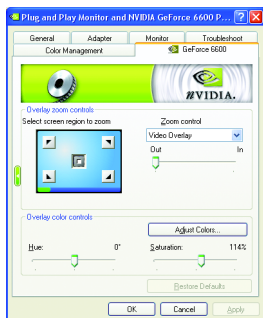
- The sliders lets to decide whether your application should use quality or high performance texture.
 - Application profiles: Select the application profile from the list of profiles.
 - Global Driver Settings: Select the Settings item and move the slider below to set the degree of antialiasing to be used in Direct3D and OpenGL applications.
 - Antialiasing settings: allows to set the degree of the Global Driver Settings.

Color Correction properties



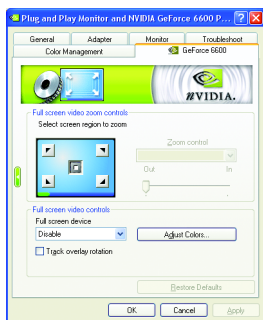
- The **Color Correction Properties** is used for compensation for variations in luminance between a source image and its output on a display device. Adjust the color correction settings to provide more accurate color reproduction of images (such as photographs) on your display device. Also, many 3D-accelerated games may appear too dark to play. Increasing the brightness and/or the gamma value equally across all channels makes these games appear brighter and more playable.

Video Overlay Settings properties



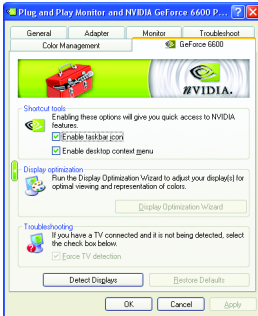
- The **Video Overlay Settings Properties** can adjust Overlay zoom controls and Overlay color controls. There is only one video overlay, which is only available on the **Primary** display. The video overlay controls are automatically activated during playback of any video file type that supports overlay adjustments. The "Adjust Colors" button will access "Color Correction" properties page.

Full Screen Video properties



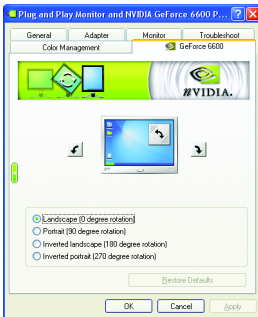
- The **Full Screen Video Properties** can adjust the display to full screen mode when video is being played.

Tools properties



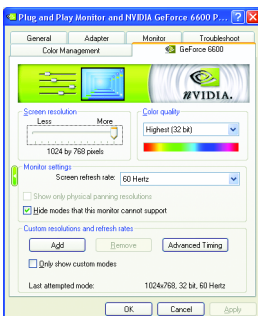
- The NVIDIA settings taskbar utility lets you conveniently access various features and presets you've configured in the Display Properties directly from the Windows taskbar.
 - Shortcut tools:
Enabling these options will give you quick access to NVIDIA features.
 - Display Optimization:
Run the Display Optimization Wizard to adjust your display(s) for optimal viewing and representation of colors.
 - Troubleshooting:
If you have a TV connected and it is not being detected, select the check box below.

NV Rotate properties



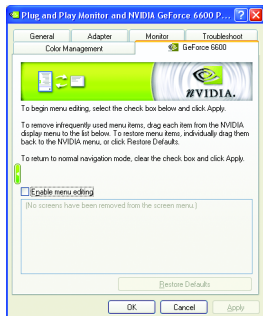
- The **NV Rotate Properties** is used to rotate the screen. If your monitor is capable of operating in either Landscape or Portrait mode, you can adjust the screen by this properties.
 - Landscape (0 degree rotation)
 - Portrait (90 degree rotation)
 - Inverted Landscape (180 degree rotation)
 - Inverted Portrait (270 degree rotation)

Screen Resolutions & Refresh Rates properties



- The **Screen Resolutions & Refresh Rates Properties** allows you to adjust the screen resolution, color quality and monitor settings (screen refresh rates). Or you can customize resolutions and refresh rates.

Menu Editing properties



- The **Menu Editing Properties** can remove infrequently used screens by dragging them from the screen menu to the list below. Restore screens to the menu by dragging them individually, or click **Restore Defaults**.

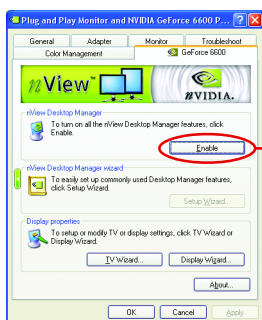
To begin, check the **Enable screen menu editing** check box. To return to normal navigation mode, uncheck the check box.

3.1.7. nView Properties pages

nView is a set of desktop tools designed to help you be more productive when using your graphics card. With **nView** you can set up multiple desktops to work with your applications. Multiple desktops give you extra desktop areas on which to run your applications so you won't have to crowd several open application windows on one desktop.


Enable the nView Desktop Manager features:

Right-click on desktop and choose Properties>Settings>Advanced>GeForce 6600>Desktop Management

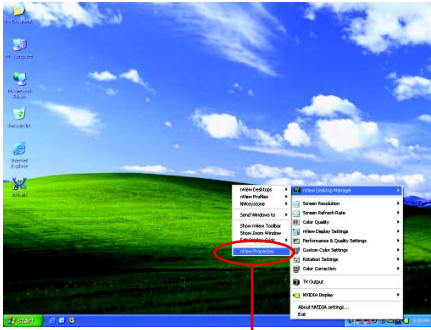


Click the **Enable** button to turn on all the nView Desktop Manager features.

Access nView properties page:

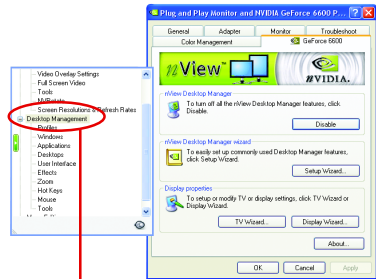
To access the nView properties page, you can click the NVIDIA icon  on the taskbar and select **nView Properties** under **nView Desktop Manager** (Method A). Or right-click on Desktop, select Properties>Settings>Advanced>GeForce 6600. Double-click **Desktop Management** item on the pop-up menu (Method B).

Method A:



Click the item to start nView Properties.

Method B:



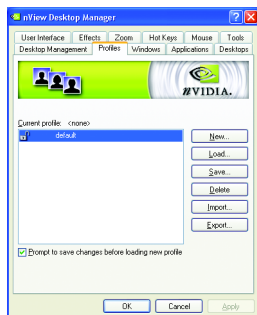
Double-click Desktop Management to see more nView properties.

nView Desktop Management properties



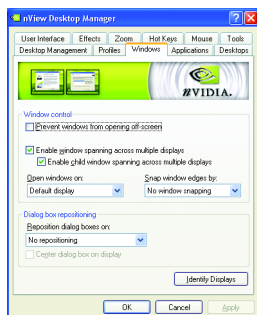
- This tab contains information about the nView Desktop Manager. The setup wizard can also be accessed from this tab.

nView Profile properties



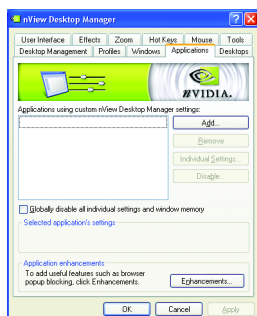
- This tab contains a record all nView display settings for easy software setup.

nView Windows properties



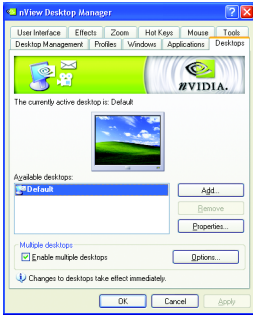
- This tab allows you to control of window and dialog box placement when using multiple monitors.

nView Applications properties



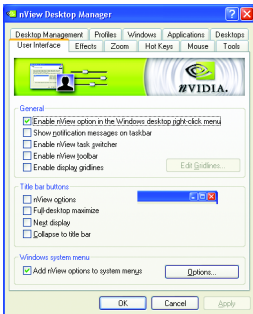
- This tab allows you to control nView settings depending on different applications.

nView Desktops properties



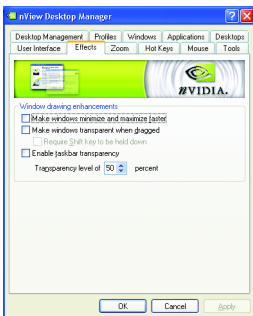
- This tab allows you to create up to 32 unique desktops.

nView User Interface properties



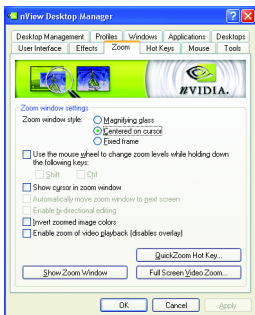
- This tab allows customization of the nView user interface.

nView Effects properties



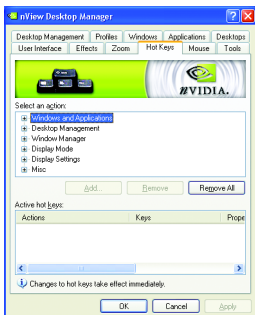
- This tab provides special windows effects that you can apply to your applications.

nView Zoom properties



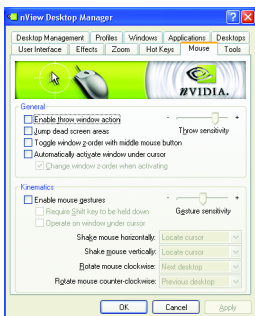
- This tab provides dynamic zoom functionality on the desktop. Also enables full screen video playback via the video mirroring control button.

nView Hot Keys properties



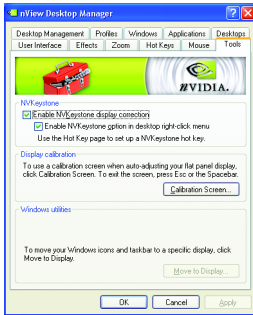
- This tab lets you perform various actions with shortcut keys or key combinations.

nView Mouse properties



- This tab can modify and extend mouse behavior with kinematic actions.

nView Tools properties



- This tab can improve nView functionality for mobile and desktop users.

3.2. Windows® 2000 Driver Installation

With Windows running on your computer, you need to install the graphics card driver to take advantage of the higher performance, resolutions, and special graphics features of the graphics card. To ensure you install the latest driver, insert the Installation CD that shipped with your graphics card.

To install the graphics card driver for Windows® 2000, please insert the Installation CD. Then the AUTORUN window will show up. Click **Install Display Driver** item, and follow the wizard to install the driver.

If Windows® does not show the CD automatically, please run following steps:

1. Click the **Start** button on the control bar.
2. Select **Run**.
3. Type the following: D:\SETUP.exe
(If D is not your CD-ROM drive, substitute D with the correct drive letter.)
4. Click **OK**.
5. Click on **Install Display Drivers** to begin the Installation Wizard.
6. Click **Next**.
7. Click **Yes** to the license agreement.
8. Follow the Wizard's on-screen instructions to complete the installation.



Please make sure the Windows® 2000 have installed Windows® 2000 Service Pack (or later) before installing the graphics accelerator driver.

4. Troubleshooting Tips

The following troubleshooting tips may help if you experience problems. Contact your dealer or GIGABYTE for more advanced troubleshooting information.

- Check that the card is seated properly in the AGP slot.
- Ensure that the display cable is securely fastened to the card's display connector.
- Make sure that the monitor and computer are plugged in and receiving power.
- If necessary, disable any built-in graphics capabilities on your motherboard. For more information, consult your computer's manual or manufacturer.

(NOTE: Some manufacturers do not allow the built-in graphics to be disabled or to become the secondary display.)

- Make sure you selected the appropriate display device and graphics card when you installed the graphics driver.
- Restart your computer.

Press the F8 key on your keyboard after system starts up. When the Windows Advanced Options Menu appears, select Safe Mode and press Enter.

After getting into Safe Mode, in Device Manager check whether the driver for the graphics card is correct.

- For more assistance, use the Troubleshooting Guide located in the Windows® Help or contact your computer manufacturer.



If necessary, adjust your monitor's setting by monitor's adjust panel to make the screen looks focused, crisp, and sharp. (Please refer to the monitor's manual.)


5. Appendix

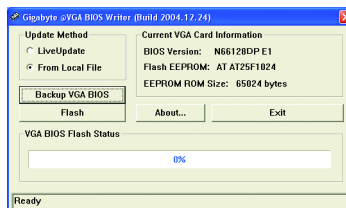
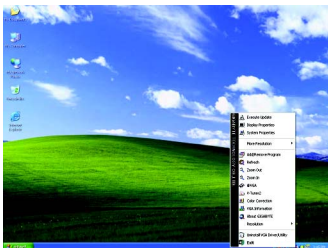
5.1. How to Reflash the BIOS

5.1.1. Reflash BIOS in MS-DOS mode

1. Extract the downloaded Zip file to your hard disk(s) or floppy disk. This procedure assumes drive A.
2. Restart the computer in MS-DOS mode. (For Windows 2000/XP, you need a startup disk to restart the computer in MS-DOS mode.)
3. Change the command prompt to A:\>.
4. To back up the current BIOS, at the A:\> prompt, type [BIOS flash utility name] -s [BIOS file name] (**example: gvf11 -s nx66t128d.f1**) and press **Enter**.
5. To flash BIOS, at the A:\> prompt, type [BIOS flash utility name] -p [BIOS file name] (**example: gvf11 -p nx66t128d.f2**) and press **Enter**.
6. Wait until it's done, then restart your computer.

5.1.2. Reflash BIOS in Windows mode

1. After installing the display drivers, you will find a GIGABYTE  icon in the lower-right corner of the Taskbar. Right-click to select the @VGA utility.



@VGA flash BIOS utility.

2. Update BIOS through the Internet
 - a. Select the **Live Update** check box and click **Flash**. Then @VGA will automatically download the BIOS for your card from GIGABYTE @VGA server and do the update for you. (@VGA will not download/update the BIOS if it detects the current BIOS on your card is the latest one.)
3. Update BIOS NOT through the Internet
 - a. Download the BIOS ZIP file for your card from GIGABYTE website and extract it to your hard disk (or floppy disk).
 - b. Select the **From Local File** check box and then click **Flash**.
 - c. Select the BIOS file from your hard disk (or floppy disk).
 - d. Complete the update procedure following the on-screen instructions.

5.2. Resolutions and Color Depth Table (In Windows® XP)

GeForce 6600 Single Display Standard Modes

Display Screen Resolution	Maximum Refresh Rate (Hz)	Color Depth (bpp)		
		8bpp(256 color) Standard mode	16bpp(65K color) High mode	32bpp(16.7M) True mode
320 x 200	75	✓	✓	✓
320 x 240	75	✓	✓	✓
400 x 300	75	✓	✓	✓
480 x 360	75	✓	✓	✓
512 x 384	75	✓	✓	✓
640 x 400	75	✓	✓	✓
640 x 480	240	✓	✓	✓
720 x 480	60	✓	✓	✓
720 x 576	60	✓	✓	✓
800 x 600	240	✓	✓	✓
848 x 480	240	✓	✓	✓
960 x 600	240	✓	✓	✓
1024 x 768	240	✓	✓	X
1088 x 612	240	✓	✓	X
1152 x 864	200	✓	✓	X
1280 x 720	170	✓	✓	X
1280 x 768	170	✓	✓	X
1280 x 800	170	✓	✓	X
1280 x 960	170	✓	✓	X
1280 x 1024	170	✓	✓	X
1360 x 768	170	✓	✓	X
1600 x 900	150	✓	✓	X
1600 x 1024	120	✓	✓	X
1600 x 1200	120	✓	✓	X
1920 x 1080	100	✓	✓	X
1920 x 1200	100	✓	✓	X
1920 x 1440	85	✓	✓	✓
2048 x 1536	85	✓	✓	✓

* This table is for reference only. The actual resolutions supported depend on the monitor you use.

