

# GV-N520OC-1GI/ GV-N520TC-1GI

NVIDIA® GeForce™ GT 520 Graphics Accelerator

## User's Manual

Rev. 101

12MM-N520-101ER

### Copyright

© 2011 GIGABYTE TECHNOLOGY CO., LTD

Copyright by GIGA-BYTE TECHNOLOGY CO., LTD. ("GBT"). No part of this manual may be reproduced or transmitted in any form without the expressed, written permission of GBT.

### Trademarks

Third-party brands and names are the properties of their respective owners.

### Notice

Please do not remove any labels on this graphics card. Doing so may void the warranty of this card.

Due to rapid change in technology, some of the specifications might be out of date before publication of this this manual.

The author assumes no responsibility for any errors or omissions that may appear in this document nor does the author make a commitment to update the information contained herein.

### Rovi Product Notice:

This product incorporates copyright protection technology that is protected by U.S. patents and other intellectual property rights. Use of this copyright protection technology must be authorized by Rovi Corporation, and is intended for home and other limited viewing uses only unless otherwise authorized by Rovi Corporation. Reverse engineering or disassembly is prohibited.

## Declaration of Conformity

(Full address)

**G.B.T. Technology Trading GmbH**  
Bismarckstr. 14, 52074 Krefeld, Germany

(description of the apparatus, system, installation to which it refers)

**VGA Card**

GV-N5200C-1GI

is in conformity with  
in accordance with 2004/108/EC EMC Directive

<input type="checkbox"/> EN 55011	Limits and methods of measurement of radio disturbance characteristics of industrial, scientific and medical (ISM) high frequency equipment	<input checked="" type="checkbox"/> EN 61000-3-2	Disturbances in supply systems caused by radio frequency equipment
<input type="checkbox"/> EN 55013	Limits and methods of measurement of broadcast receivers and associated equipment	<input checked="" type="checkbox"/> EN 61000-3-3	Disturbances in supply systems caused by radio frequency equipment "Voltage fluctuations"
<input type="checkbox"/> EN 55014-1	Limits and methods of measurement of radio disturbance characteristics of household electrical appliances	<input checked="" type="checkbox"/> EN 55024	Information Technology equipment-immunity characteristics-Limits and methods of measurement
<input type="checkbox"/> EN 55015	Limits and methods of measurement of fluorescent lamps and luminaires	<input checked="" type="checkbox"/> EN 50085-1	Generic immunity standard Part 1: Radiated, commercial and light industry
<input type="checkbox"/> EN 55020	Immunity from radio interference of broadcast receivers and associated equipment	<input checked="" type="checkbox"/> EN 50085-2	Generic immunity standard Part 2: Industrial environment
<input type="checkbox"/> EN 55022	Limits and methods of measurement of radio disturbance characteristics of information technology equipment	<input type="checkbox"/> EN 55014-2	Immunity requirements for household appliances tools and similar apparatus
<input type="checkbox"/> DIN VDE 0855	Callied distribution systems: Equipment for receiving audio distribution from sound and television signals	<input checked="" type="checkbox"/> EN 50091-2	EMC requirements for uninterruptible power systems (UPS)
<input type="checkbox"/> Part 10			
<input type="checkbox"/> Part 12			
<input type="checkbox"/> CE marking			
<input type="checkbox"/> EN 60085	Safety requirements for mains operated household and similar general use	<input checked="" type="checkbox"/> EN 60950	Safety for information technology equipment including electronic business equipment
<input type="checkbox"/> EN 60335	Safety of household and similar domestic appliances	<input checked="" type="checkbox"/> EN 50094-1	General and Safety requirements for uninterruptible power systems (UPS)



(EC conformity marking)

**The manufacturer also declares the conformity of above mentioned product with the actual required safety standards in accordance with LVD 89/368/EEC**

**Manufacturer/Importer**

Signature: **Timmy Huang**

(Stamp)

Date: **Apr 15, 2011**

Name: **Timmy Huang**

## DECLARATION OF CONFORMITY

Per FCC Part 2, Section 2.1077(a)



**Responsible Party Name: G.B.T. INC. (U.S.A.)**

**Address: 17358 Railroad Street**

**City of Industry, CA 91748**

**Phone/Fax No: (818) 854-9338/ (818) 854-9339**

hereby declares that the product

**Product Name: VGA Card**

**Model Number: GV-N5200C-1GI**

Conforms to the following specifications:

FCC Part 15, Subpart B, Section 15.107(a) and Section 15.109

(a), Class B Digital Device

### Supplementary Information:

This device complies with part 15 of the FCC Rules. Operation is subject to the following two conditions: (1) This device may not cause harmful and (2) this device must accept any interference received, including that may cause undesired operation.

Representative Person's Name: **ERIC LU**

Signature: **Eric Lu**

Date: **Apr. 15, 2011**

## Declaration of Conformity

We, Manufacturer(s)

G.B.T Technology Trading GmbH  
Bismarckstr. 25-27, 10556 Berlin, Germany

(full address)

declares that the product

(description of the appliance, system, installation to which it refers)

is in conformity with

GV-N520TC-1GI

(reference to the applicable standard(s) to which conformity is declared)

in accordance with 2004/108/EC EMC Directive

VGA Card

GV-N520TC-1GI

☐ EN 55015

Limits and methods of measurement of radio disturbance characteristics of industrial, scientific and medical (ISM) high frequency equipment

☒ EN 61000-3-2

Disturbance in supply systems caused by equipment with a rated current >16A and <75A

☐ EN 55013

Limits and methods of measurement of radio disturbance characteristics of broadcast receivers and associated equipment

☒ EN 61000-3-3

Disturbance in supply systems caused by equipment with a rated current >16A and <75A

☐ EN 55014-1

Limits and methods of measurement of radio disturbance characteristics of portable tools and similar electrical apparatus

☒ EN 50085-1

Generic immunity standard Part 1: Radiated, commercial and light industry

☐ EN 55015

Limits and methods of measurement of radio disturbance characteristics of fluorescent lamps and luminaires

☒ EN 50085-2

Generic immunity standard Part 2: Industrial environment

☐ EN 55020

Immunity from radio interference of broadcast receivers and associated equipment

☒ EN 55014-2

Immunity requirements for household appliances tools and similar apparatus

☐ EN 55022

Limits and methods of measurement of radio disturbance characteristics of information technology equipment

☒ EN 50091-2

EMC requirements for unshieldable power systems (UPs)

☐ DIN VDE 0855

Called distribution systems. Equipment for receiving audio distribution from sound and television signals

☒ EN 50091-1

General and safety requirements for unshieldable power systems (UPs)

☐ CE marking

☒ EN 60950

The manufacturer also declares the conformity of above mentioned product with the actual required safety standards in accordance with LVD 2006/95/EC

☒ EN 60950

Safety requirements for mains operated electronic and electro apparatus for household and similar general use

☒ EN 50091-1

Safety of household and similar electrical appliances

☒ EN 60335

Safety of household and similar electrical appliances

☒ EN 60335

Manufacturer/Importer

G.B.T Technology Trading GmbH

Signature: *Timmy Huang*

(Stamp)

Date: Apr. 15, 2011

Name: Timmy Huang

## DECLARATION OF CONFORMITY

Per FCC Part 2 Section 2.1077(a)



Responsible Party Name: G.B.T. INC. (U.S.A.)

Address: 17358 Railroad Street

City of Industry, CA 91748

Phone/Fax No: (818) 854-9338/ (818) 854-9339

hereby declares that the product

Product Name: VGA Card

Model Number: GV-N520TC-1GI

Conforms to the following specifications:

FCC Part 15, Subpart B, Section 15.107(a) and Section 15.109

(a), Class B Digital Device

Supplementary Information:

This device complies with part 15 of the FCC Rules. Operation is subject to the following two conditions: (1) This device may not cause harmful and (2) this device must accept any interference received, including that may cause undesired operation.

Representative Person's Name: ERIC LU

Signature: *Eric Lu*

Date: Apr. 15, 2011

# Table of Contents

1. Introduction .....	5
1.1. Features .....	5
1.2. Minimum System Requirements .....	5
2. Hardware Installation .....	6
2.1. Board Layout .....	6
2.2. Hardware Installation .....	9
3. Software Installation .....	10
3.1. Driver and Utility Installation .....	10
3.1.1. Driver Installation .....	10
3.1.2. GIGABYTE Easy Boost on Driver Disk .....	12
3.2. Display Properties Pages .....	15
3.3. Accessing NVIDIA Control Panel .....	16
4. Troubleshooting Tips .....	24
5. Appendix .....	25
5.1. How to Reflash the BIOS in MS-DOS Mode .....	25
5.2. Resolutions and Color Depth Tables .....	26
5.3. Regulatory Statements .....	28

# 1. Introduction

## 1.1. Features

- Powered by NVIDIA® GeForce™ GT 520 Graphics Processing Unit (GPU)
- Supports PCI Express 2.0
- Integrated with 1GB DDR3 memory(For GV-N520OC-1GI only)
- GV-N520TC-1GI supports NVIDIA Turbo Cache technology which enables graphics card performance by allowing the graphics processing unit (GPU) to dynamically share the available system memory.  
The total effective VGA memory differs depending on system memory.
- Supports DirectX 11
- Supports 1 HDMI connector
- Supports 1 D-Sub connector
- Supports 1 DVI-I connectors
- Supports HDCP (High-Bandwidth Digital Content Protection) technology

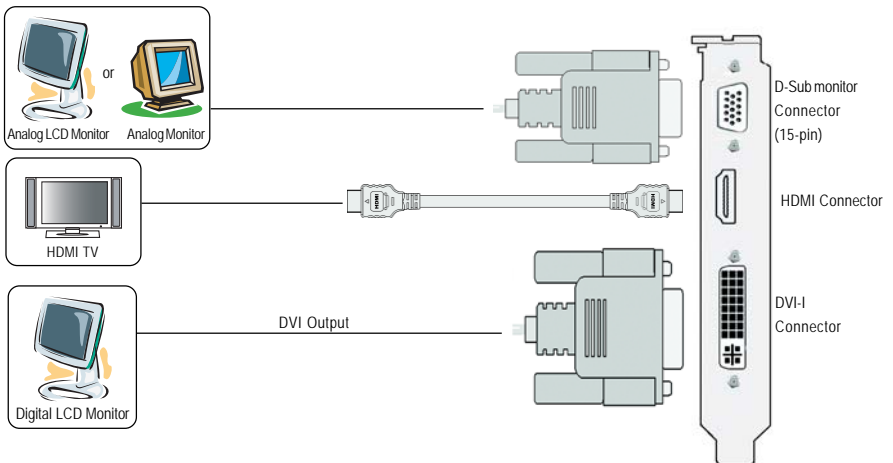
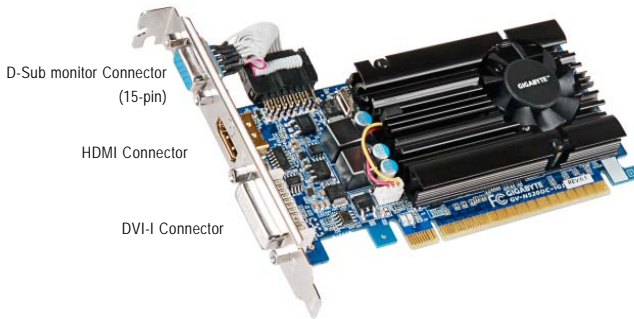
## 1.2. Minimum System Requirements

- **Hardware**
  - Intel® Pentium®/Core™ 2 or AMD Athlon™/Phenom™
  - 128 MB of system memory; 2 GB or more for best performance
  - Optical drive for software installation (CD-ROM or DVD-ROM drive)
  - A 300 Watt power supply or above is a recommended
- **Operating System**
  - Windows® 7
  - Windows® Vista
  - Windows® XP with Service Pack 2 (SP2)
  - Windows® XP Professional x64 Edition

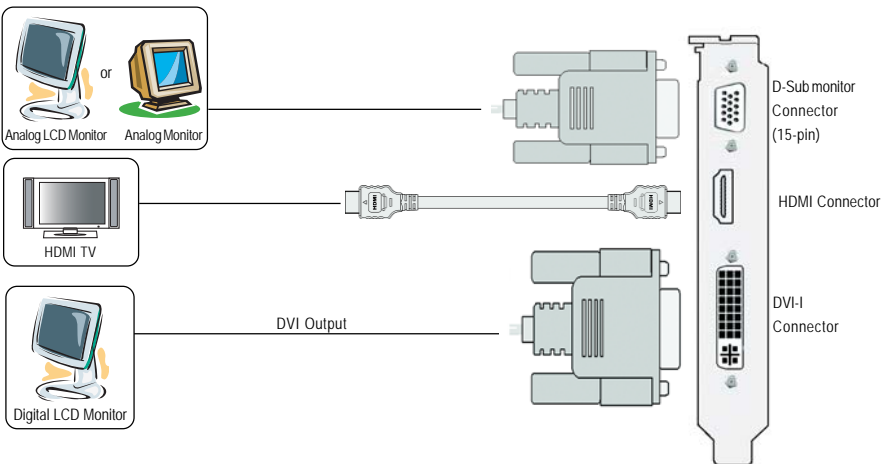
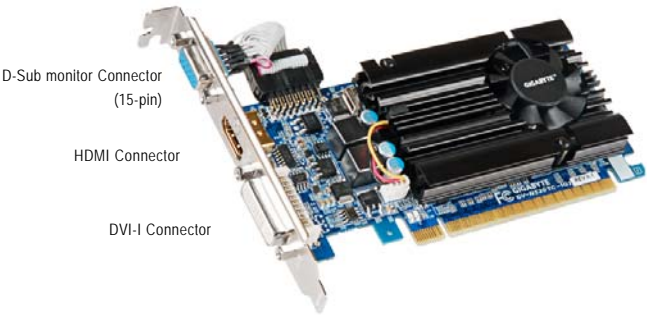
## 2. Hardware Installation

### 2.1. Board Layout

#### 1. GV-N520OC-1GI



2.GV-N520TC-1GI





Expansion cards contain very delicate Integrated Circuit (IC) chips. To protect them against damage from static electricity, you should follow some precautions whenever you work on your computer.

1. Turn off your computer and unplug power supply.
2. Use a grounded wrist strap before handling computer components. If you do not have one, touch both of your hands to a safely grounded object or to a metal object, such as the power supply case.
3. Place components on a grounded antistatic pad or on the bag that came with the components whenever the components are separated from the system.

The card contains sensitive electric components, which can be easily damaged by static electricity, so the card should be left in its original packing until it is installed.

Unpacking and installation should be done on a grounded anti-static mat. The operator should be wearing an anti-static wristband, grounded at the same point as the anti-static mat.

Inspect the card carton for obvious damage. Shipping and handling may cause damage to your card. Be sure there are no shipping and handling damages on the card before proceeding.

⚡\* **DO NOT APPLY POWER TO YOUR SYSTEM IF THE GRAPHICS CARD IS DAMAGED.**

⚡\* **In order to ensure that your graphics card can work correctly, please use official GIGABYTE BIOS only. Using non-official GIGABYTE BIOS might cause problem(s) on the graphics card.**



# 2.2. Hardware Installation

Now that you have prepared your computer, you are ready to install your graphics card.

## Step 1.

Locate the PCI Express x16 slot. If necessary, remove the metal cover from this slot; then align your graphics card with the PCI Express x16 slot, and press it in firmly until the card is fully seated.

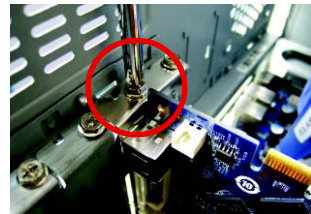


Make sure that the gold edge connector of the graphics card is securely inserted.



## Step 2.

Replace the screw to fasten the card in place, and replace the computer cover.



## Step 3.

Plug the display cable into your card; then turn on the computer and monitor. To connect a D-Sub monitor to your graphics card, use the D-Sub connector. To connect a flat panel display to your graphics card, use the DVI-I connector. To connect an HDMI monitor to your graphics card, use the HDMI connector.



To HDMI Monitor



To D-Sub Monitor



To Flat Panel Display



Connect an HDMI monitor



Connect a D-Sub monitor



Connect a flat panel display

## 3. Software Installation

Notice the following guidelines before installing the drivers:

1. First make sure your system has installed DirectX 9 or later version.
2. Make sure your system has installed the appropriate motherboard drivers (for the motherboard drivers, please contact the motherboard manufacturer.)

### 3.1. Driver and Utility Installation

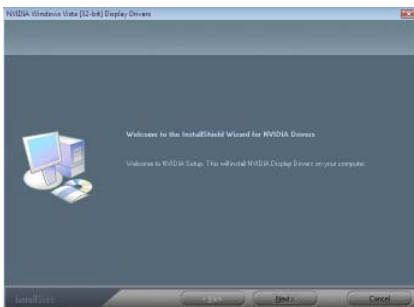
#### 3.1.1. Driver Installation

After installing the operating system, insert the driver disk into your optical drive. The driver Autorun screen is automatically displayed which looks like that shown in the screen shot below. (If the driver Autorun screen does not appear automatically, go to My Computer, double-click the optical drive and execute the **setup.exe** program.)



Step 1:

Click the **Install Display Driver** item.



Step 2:

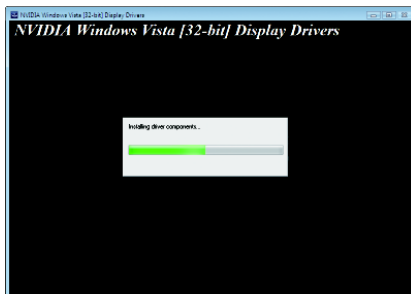
Click the **Next** button.



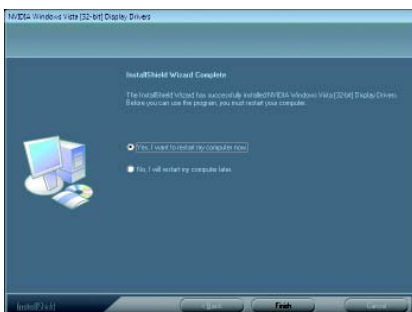
For software MPEG support in Windows XP, you must install DirectX first. Users who run Windows XP with Service Pack 2 or above do not need to install DirectX separately.



Step 3:  
Click the Yes button.



The system is installing the components.



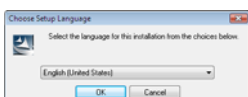
Step 4:  
Click the **Finish** button to restart the computer.  
Then the driver installation is completed.

### 3.1.2. GIGABYTE Easy Boost on Driver Disk



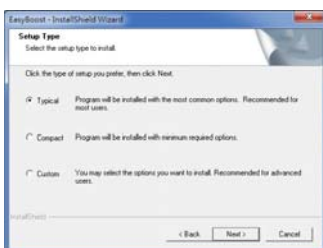
Step 1:

Click the GIGABYTE Easy Boost item.



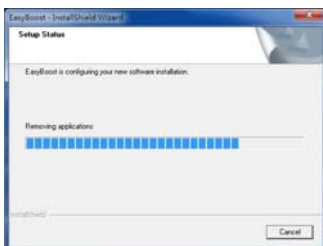
Step 2:

Choose the language for the installation and click the OK button.

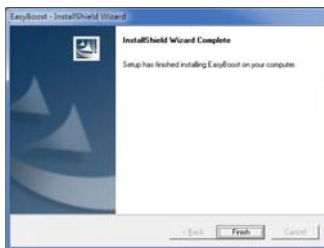


Step 3:

Choose the Typical and click the Next button



The system is installing the components.



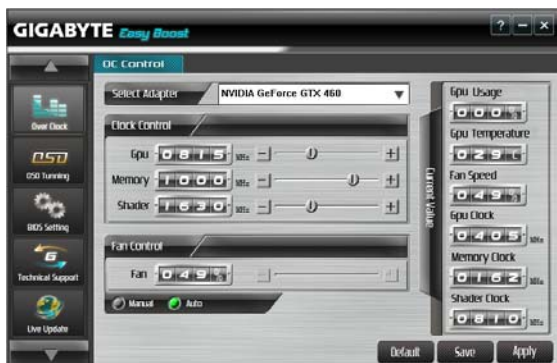
Step 4:

Click the Finish button. Then the installation of the GIGABYTE Easy Boost is completed.

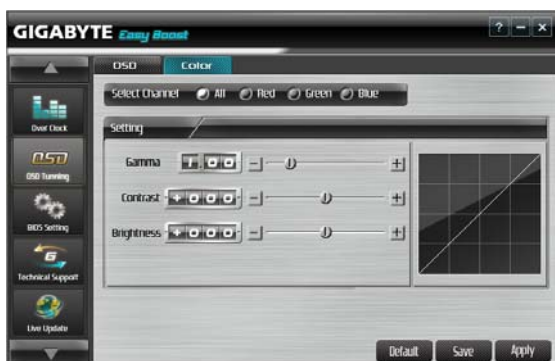
## GIGABYTE Easy Boost

EasyBoost is combined with Over Clock, OSD Turning, BIOS Setting, Technical Support, Live Update.

**Over Clock:** Adjust GPU clock, Memory clock, Shader clock and Fan speed. And monitor graphics card current value.



**OSD Turning:** "OSD" Set hotkey of OSD function and directory of screen shot and recording video output. "Color" Adjust Gamma, Contrast and Brightness.



## BIOS Setting:

Back up current BIOS, flash BIOS from selected BIOS file and auto flash BIOS from server.



Technical Support: Show information of VGA, CPU, motherboard, system memory and monitor.



Live Update: Auto detect the latest version Easy Boost and auto update.

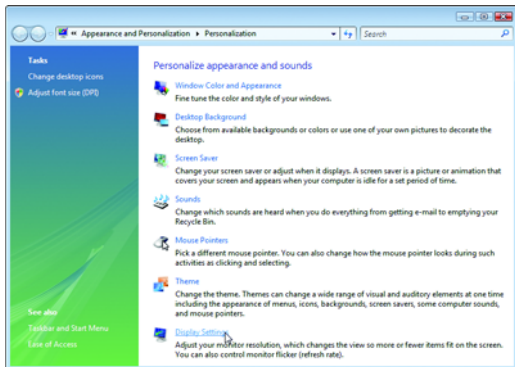


Incorrectly doing overclock may result in damage to your system and reduce the useful life of the system components.

## 3.2. Display Properties Pages

### Display Settings (Resolutions and Color Quality for Windows)

To access **Display Settings** page, right-click on desktop and select **Personalize**, then the Personalization windows will show up. Select **Display Settings** to adjust the screen resolution and color quality settings.



You can move the slider to change the resolution.

You can click the item to change the color quality.

Click the **Advanced** button for advanced settings.

### 3.3. Accessing NVIDIA Control Panel

After installation of the display driver, right-click on the desktop and select **NVIDIA Control Panel**. The **NVIDIA Control Panel** is used to configure all your graphics card settings.



Right-click on the desktop and select **NVIDIA Control Panel**.

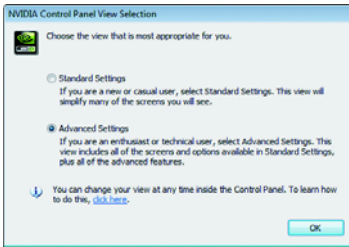
Or you can right-click on the desktop and select **Personalize**, and then the **Control Panel\Appearance Personalization\Personalization** window will show up. Select **Display Settings**. When the **Display Settings** dialog box appears, click **Advanced Settings**.

After clicking the **Advanced Settings** button in **Display Settings**, you'll see the **Generic PnP Monitor** and **NVIDIA GeForce GT 520 Properties** dialog box. Click the **GeForce GT 520** tab to access the **NVIDIA Control Panel**.



On the **GeForce GT 520** tab page, click **Start the NVIDIA Control Panel** to launch the **NVIDIA Control Panel**.





Select the view of the NVIDIA Control Panel that is most appropriate for you.

- Standard Settings
- Advanced Settings

The following pages provide details on configuring advanced settings.



In the NVIDIA Control Panel, select a category to alter specific NVIDIA display settings.

The categories are:

- 3D Settings
- Display
- Video & Television



In the NVIDIA Control Panel, change a view if you want.

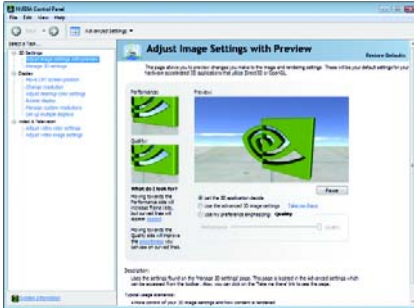
The supported modes are:

- Standard
- Advanced
- Custom

### 3D Settings

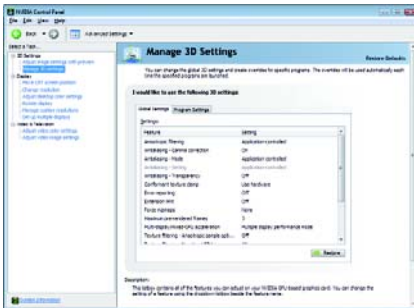
Tasks in the 3D Settings pages allow you to do the following:

- Change the image and rendering settings of your 3D applications and games that utilize DirectX3D and OpenGL technology.
- Override the shipped clocked frequencies of your GPU and GPU memory to increase your GPU performance.
- Assign specific 3D settings to a game so that these settings automatically load when a game is launched.



- Adjust Image Settings with Preview

If you are unfamiliar with 3D technology or not an advanced graphics user, use the Adjust Image Settings with Preview page to preview any changes you make for improved image quality and rendering.



- **Manage 3D Settings** <sup>(Note 1)</sup>

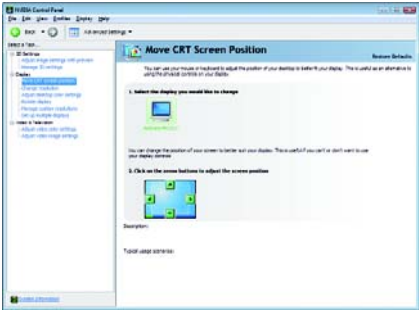
The Manage 3D Settings page enables you to establish default 3D settings to use for all your Direct3D or OpenGL applications and to establish a unique set of 3D settings for a particular game or application.

(Note 1) This item is present only in Advanced view mode.

# Display

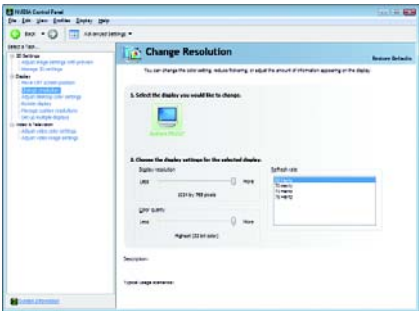
A variety of display features enable you to further manipulate and configure your display settings to optimize the use of your displays. Tasks in the Display pages allow you to do the following:

- Move CRT screen position
- Change resolution
- Adjust desktop color settings
- Rotate display
- Manage custom resolutions <sup>(Note)</sup>
- Set up multiple displays



## ■ Move CRT Screen Position

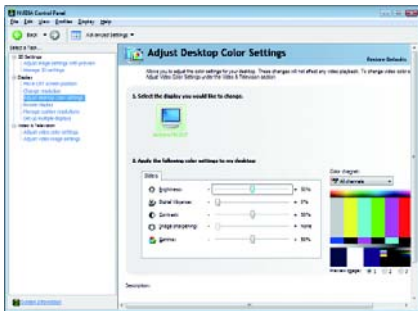
You can use your mouse (by clicking on the arrow keys on this page) or the arrow keys on your keyboard to adjust the position of your desktop to better fit your display. This is a useful alternative to using the controls (buttons) on your actual physical display.



## ■ Change Resolution

Using the Change Resolution controls, you can change the color setting, reduce screen flickering, or adjust the amount of information appearing on your display.

(Note) This item is present only in Advanced view mode.



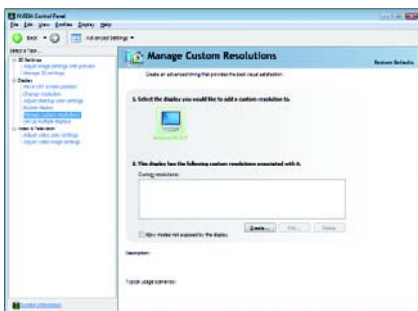
## ■ Adjust Desktop Color Settings

Use this page to set the contrast, sharpness, and color depth (Digital Vibrance) of the images on your desktop. These changes will not affect any video playback. To change video color settings, go to Adjust Video Color Settings under the Video and TV section from the Start page.



## ■ Rotate Display

The NVIDIA Rotate features enable you to change the orientation of your desktop to portrait, landscape, and inverted modes. This is useful if you have rotated your physical display and need to rotate the desktop to match the orientation of your display.



## ■ Manage Custom Resolutions<sup>(Note)</sup>

If you are an advanced user, you can create custom timing modes with the width, height, bit-color depth, and the refresh rate etc. The Advanced Timing page enables you to adjust timings for your graphics card in order to support a variety of different display timings for ultimate flexibility for analog CRT and DVI connections. You can use the advanced Change Resolution Attributes page to view custom display modes you have saved in the Create Custom Resolutions page.

(Note) This item is present only in Advanced view mode.

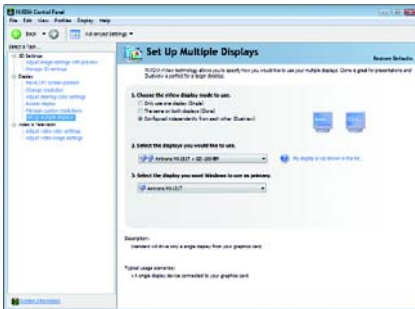


## ■ Set Up Multiple Displays

NVIDIA nView technology enables you to view your desktop in one of several multi-display modes to make the best use of the displays (monitors) that are connected to your computer.

## Dual-Monitor Setup

You can set the display to output from two monitors on the Set Up Multiple Displays page.



Select your preferred nView display modes here.

- Only use one display (Single)
- The same on both display (Clone)
- Configured independently from each other (Dualview)
- As one large horizontal desktop (Horizontal span) <sup>(Note)</sup>
- As one large vertical desktop (Vertical span) <sup>(Note)</sup>

### (1) The same on both display (Clone)

Clone mode indicates that both displays in the display pair show images of the same desktop.



Clone Mode

### (2) Configured independently from each other (Dualview)

Dualview mode indicates that both displays in the display pair function as one virtual desktop. Unlike Horizontal Span or Vertical Span mode, Dualview treats each display as a separate device. This means that the taskbar will not be stretched across displays and 3D applications are not accelerated as efficiently as when the application spans displays.



Dualview Mode

(Note) This item is present only in Windows XP.

### (3) As one large horizontal desktop

#### (Horizontal span) <sup>(Note 1)</sup>

Horizontal Span mode indicates that both displays in the display pair function as one wide virtual desktop. The width of each display is half the width of the total virtual desktop width.



Horizontal Span Mode

### (4) As one large vertical desktop

#### (Vertical span) <sup>(Note 1)</sup>

Vertical Span mode indicates that both displays in the display pair function as one tall virtual desktop. The height of each display is half the height of the total virtual desktop height.



Vertical Span Mode

Display Matrix	Model	GV-N520OC-1GI	GV-N520TC-1GI
	CRT+HDMI	Yes	Yes
	CRT+DVI	Yes	Yes
	DVI+HDMI	Yes	Yes
	DVI+HDMI+CRT	No	No
	DVI +DVI <sup>(Note 2)</sup>	Yes	Yes
	CRT+CRT <sup>(Note 3)</sup>	Yes	Yes

(Note 1) This item is present only in Windows XP.

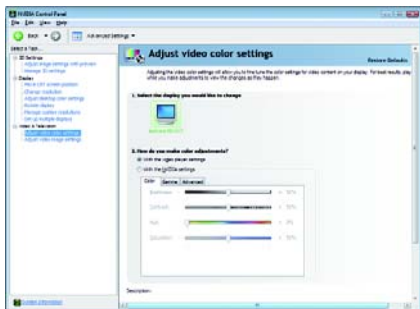
(Note 2) By an HDMI-to-DVI adapter.

(Note 3) By a DVI-to-D-Sub adapter.

## Video & Television

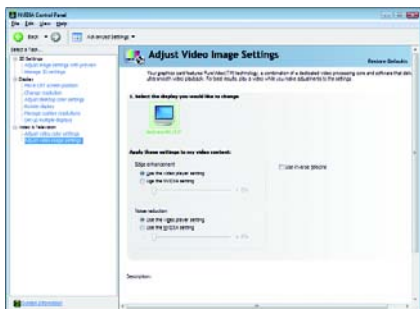
Video and television features are similar to those for analog for optimal viewing. Tasks in the Video & Television pages allow you to do the following:

- Adjust your television picture quality and video color settings for the best possible viewing in its environment.
- Change the position and size of the desktop video to best fit your television screen.



### ■ Adjust Video Color Settings

Use the controls on this page to fine tune the color settings for video content on your display. Select one of the test images to monitor your changes. For best results, play a video while you make adjustment to view the changes as they happen.



### ■ Adjust Video Image Settings

Use the controls on this page to fine tune the image settings for video content on your display. You can choose to use inverse telecine, adjust edge sharpness, or apply noise filtering. For best results, play a video while you make adjustment to view the changes as they happen.

Note:

Support for some features under Windows Vista is in development and may not be available with your ForceWare graphics driver version. Consult the release notes for updated information on supported features.

## 4. Troubleshooting Tips

The following troubleshooting tips may help if you experience problems. Contact your dealer or GIGABYTE for more advanced troubleshooting information.

- Check that the card is seated properly in the PCI Express x16 slot.
- Ensure that the display cable is securely fastened to the card's display connector.
- Make sure that the monitor and computer are plugged in and receiving power.
- If necessary, disable any built-in graphics capabilities on your motherboard. For more information, consult your computer's manual or manufacturer.  
(NOTE: Some manufacturers do not allow the built-in graphics to be disabled or to become the secondary display.)
- Make sure you selected the appropriate display device and graphics card when you install the graphics driver.
- Restart your computer.  
Press <F8> on your keyboard after system starts up. When the Windows Advanced Options Menu appears, select Safe Mode and press <Enter>.  
After getting into Safe Mode, in Device Manager check whether the driver for the graphics card is correct.
- For more assistance, use the Troubleshooting Guide located in the Windows Help or contact your computer manufacturer.
- If you are not able to find the desired monitor color/resolution settings:  
The color and screen resolution options available for selection depend on the graphics card being installed.



If necessary, adjust your monitor's setting using monitor's adjust panel to make the screen look focused, crisp, and sharp. (Please refer to the monitor's manual.)



## 5. Appendix

### 5.1. How to Reflash the BIOS in MS-DOS Mode

1. Extract the downloaded Zip file to your hard disk(s) or floppy disk. This procedure assumes drive A.
2. Restart the computer in MS-DOS mode. (You may need a startup disk to restart the computer in MS-DOS mode.)
3. Change the command prompt to A:\>.
4. To back up the current BIOS, at the A:\> prompt, type `[BIOS flash utility name] -s [BIOS file name]` (example: `gvf19 -s n520ogi.F1`) and press **Enter**.
5. To flash BIOS, at the A:\> prompt, type `[BIOS flash utility name] -p [BIOS file name]` (example: `gvf19 -p n520ogi.F2`) and press **Enter**.
6. Wait until it's done, then restart your computer.

## 5.2. Resolutions and Color Depth Tables

GeForce 520 Single Display Standard Modes

Display Screen Resolution	Refresh Rate (Hz)	Color Depth (bpp)		
		8bpp(256 color) Standard mode	16bpp(65K color) High mode	32bpp(16.7M) True mode
320 x 200	60-75	✓	✓	✓
320 x 240	60-75	✓	✓	✓
400 x 300	60-75	✓	✓	✓
480 x 360	60-75	✓	✓	✓
512 x 384	60-75	✓	✓	✓
640 x 400 (16:10)	60-75	✓	✓	✓
640 x 480	60-240	✓	✓	✓
720 x 480	60	✓	✓	✓
720 x 576	50-60	✓	✓	✓
800 x 600	60-240	✓	✓	✓
848 x 480	60-240	✓	✓	✓
960 x 600 (16:10)	60-240	✓	✓	✓
1024 x 768	60-200	✓	✓	✓
	240	✓	✓	X
1088 x 612 (16:9)	60-200	✓	✓	✓
	240	✓	✓	X
1152 x 864	60-170	✓	✓	✓
	200	✓	✓	X
1280 x 720 (16:9)	60-150	✓	✓	✓
	170	✓	✓	X
1280 x 768	60-150	✓	✓	✓
	170	✓	✓	X
1280 x 800	60-150	✓	✓	✓
	170	✓	✓	X
1280 x 960	60-150	✓	✓	✓
	170	✓	✓	X
1280 x 1024	60-150	✓	✓	✓
	170	✓	✓	X
1360 x 768	60-150	✓	✓	✓
	170	✓	✓	X
1600 x 900 (16:9)	60-120	✓	✓	✓
	140-150	✓	✓	X
1600 x 1024	60-100	✓	✓	✓
	120	✓	✓	X

To be continued...

Display Screen Resolution	Refresh Rate (Hz)	Color Depth (bpp)		
		8bpp(256 color) Standard mode	16bpp(65K color) High mode	32bpp(16.7M) True mode
<b>1600 x 1200</b>	60~100	✓	✓	✓
	120	✓	✓	X
<b>1920 x 1080 (16:9)</b>	60~85	✓	✓	✓
	100	✓	✓	X
<b>1920 x 1200 (16:10)</b>	60~85	✓	✓	✓
	100	✓	✓	X
<b>1920 x 1440</b>	60~85	✓	✓	✓
<b>2048 x 1536</b>	60~85	✓	✓	✓
<b>2560 x 1600 (Dual-Link)</b>	60	✓	✓	✓

\* This table is for reference only. The actual resolutions supported depend on the monitor you use.

## 5.3. Regulatory Statements

### Regulatory Notices

This document must not be copied without our written permission, and the contents there of must not be imparted to a third party nor be used for any unauthorized purpose. Contravention will be prosecuted. We believe that the information contained herein was accurate in all respects at the time of printing. GIGABYTE cannot, however, assume any responsibility for errors or omissions in this text. Also note that the information in this document is subject to change without notice and should not be construed as a commitment by GIGABYTE.

### Our Commitment to Preserving the Environment

In addition to high-efficiency performance, all GIGABYTE motherboards fulfill European Union regulations for RoHS (Restriction of Certain Hazardous Substances in Electrical and Electronic Equipment) and WEEE (Waste Electrical and Electronic Equipment) environmental directives, as well as most major worldwide safety requirements. To prevent releases of harmful substances into the environment and to maximize the use of our natural resources, GIGABYTE provides the following information on how you can responsibly recycle or reuse most of the materials in your "end of life" product.

### Restriction of Hazardous Substances (RoHS) Directive Statement

GIGABYTE products have not intended to add and safe from hazardous substances (Cd, Pb, Hg, Cr+6, PBDE and PBB). The parts and components have been carefully selected to meet RoHS requirement. Moreover, we at GIGABYTE are continuing our efforts to develop products that do not use internationally banned toxic chemicals.

### Waste Electrical & Electronic Equipment (WEEE) Directive Statement

GIGABYTE will fulfill the national laws as interpreted from the 2002/96/EC WEEE (Waste Electrical and Electronic Equipment) directive. The WEEE Directive specifies the treatment, collection, recycling and disposal of electric and electronic devices and their components. Under the Directive, used equipment must be marked, collected separately, and disposed of properly.

### WEEE Symbol Statement



The symbol shown below is on the product or on its packaging, which indicates that this product must not be disposed of with other waste. Instead, the device should be taken to the waste collection centers for activation of the treatment, collection, recycling and disposal procedure. The separate collection and recycling of your waste equipment at the time of disposal will help to conserve natural resources and ensure that it is recycled in a manner that protects human health and the environment. For more information about where you can drop off your waste equipment for recycling, please contact your local government office, your household waste disposal service or where you purchased the product for details of environmentally safe recycling.

- When your electrical or electronic equipment is no longer useful to you, "take it back" to your local or regional waste collection administration for recycling.
- If you need further assistance in recycling, reusing in your "end of life" product, you may contact us at the Customer Care number listed in your product's user's manual and we will be glad to help you with your effort.

Finally, we suggest that you practice other environmentally friendly actions by understanding and using the energy-saving features of this product (where applicable), recycling the inner and outer packaging (including shipping containers) this product was delivered in, and by disposing of or recycling used batteries properly. With your help, we can reduce the amount of natural resources needed to produce electrical and electronic equipment, minimize the use of landfills for the disposal of "end of life" products, and generally improve our quality of life by ensuring that potentially hazardous substances are not released into the environment and are disposed of properly.

## China Restriction of Hazardous Substances Table

The following table is supplied in compliance with China's Restriction of Hazardous Substances (China RoHS) requirements:



关于符合中国《电子信息产品污染控制管理办法》的声明  
Management Methods on Control of Pollution from Electronic Information Products  
(China RoHS Declaration)

产品中有毒有害物质或元素的名称及含量  
Hazardous Substances Table

部件名称 (Parts)	有毒有害物质或元素 (Hazardous Substances)					
	铅 (Pb)	汞 (Hg)	镉 (Cd)	六价铬 (Cr (VI))	多溴联苯 (PBB)	多溴二苯醚 (PBDE)
PCB板 PCB	○	○	○	○	○	○
结构件及风扇 Mechanical parts and Fan	×	○	○	○	○	○
芯片及其他主动零件 Chip and other Active components	×	○	○	○	○	○
连接器 Connectors	×	○	○	○	○	○
被动电子元件 Passive Components	×	○	○	○	○	○
线材 Cables	○	○	○	○	○	○
焊接金属 Soldering metal	○	○	○	○	○	○
助焊剂、散热膏、标签及其他耗材 Flux, Solder Paste, Label and other Consumable Materials	○	○	○	○	○	○
○:表示该有毒有害物质在该部件所有均质材料中的含量均在SJ/T11363-2006标准规定的限量要求以下。 Indicates that this hazardous substance contained in all homogenous materials of this part is below the limit requirement SJ/T 11363-2006						
×:表示该有毒有害物质至少在该部件的某一均质材料中的含量超出SJ/T11363-2006标准规定的限量要求。 Indicates that this hazardous substance contained in at least one of the homogenous materials of this part is above the limit requirement in SJ/T 11363-2006						
对销售之日的所发售产品, 本表显示我公司供应链的电子信息产品可能包含这些物质。注意: 在所售产品中可能会也可能不会含有所有列出的部件。 This table shows where these substances may be found in the supply chain of our electronic information products, as of the date of the sale of the enclosed products. Note that some of the component types listed above may or may not be a part of the enclosed product.						

[illegible]

[illegible]

[illegible]