

# GV-N480SO-15I

NVIDIA® GeForce™ GTX 480 Graphics Accelerator

## User's Manual

Rev. 101

12MM-N480SO-101R

### **Copyright**

© 2010 GIGABYTE TECHNOLOGY CO., LTD

Copyright by GIGA-BYTE TECHNOLOGY CO., LTD. ("GBT"). No part of this manual may be reproduced or transmitted in any form without the expressed, written permission of GBT.

### **Trademarks**

Third-party brands and names are the properties of their respective owners.

### **Notice**

Please do not remove any labels on this graphics card. Doing so may void the warranty of this card.

Due to rapid change in technology, some of the specifications might be out of date before publication of this manual. The author assumes no responsibility for any errors or omissions that may appear in this document nor does the author make a commitment to update the information contained herein.

### **Rovi Product Notice:**

This product incorporates copyright protection technology that is protected by U.S. patents and other intellectual property rights. Use of this copyright protection technology must be authorized by Rovi Corporation, and is intended for home and other limited viewing uses only unless otherwise authorized by Rovi Corporation. Reverse engineering or disassembly is prohibited.

## Declaration of Conformity

VGA, Manufacturer/Importer  
G.B.T Technology Trading GmbH  
Bültenhof 14, 22047 Hamburg, Germany

I, the undersigned, declare that the product (description of the apparatus, VCA Card

GVN480SO-15I

is in conformity with (reference to the specification under which conformity is declared) in accordance with 2004/108/EC EMC Directive

<input type="checkbox"/> EN 55011	Limits and methods of measurement of radio disturbance characteristics of industrial, scientific and medical (ISM) high frequency equipment	<input checked="" type="checkbox"/> EN 61000-3-2	Disturbances in supply systems caused by household appliances and similar electrical equipment "Voltage fluctuations"
<input type="checkbox"/> EN 55013	Limits and methods of measurement of radio disturbance characteristics of broadcast receivers and associated equipment	<input checked="" type="checkbox"/> EN 55024	Information Technology equipment/Immunity requirements -Limits and methods of measurement
<input type="checkbox"/> EN 55014-1	Limits and methods of measurement of radio disturbance characteristics of household electrical appliances, portable tools and similar electrical apparatus	<input checked="" type="checkbox"/> EN 55022-1	Generic immunity standard Part 1: Radiated, conducted and light lightning
<input type="checkbox"/> EN 55015	Limits and methods of measurement of radio disturbance characteristics of fluorescent lamps and luminaires	<input type="checkbox"/> EN 55014-2	Immunity requirements for household appliances, tools and similar apparatus
<input type="checkbox"/> EN 55020	Immunity from radio interference of broadcast receivers and associated equipment	<input type="checkbox"/> EN 55019-2	EMC requirements for uninterruptible power systems (UPS)
<input type="checkbox"/> EN 55022	Limits and methods of measurement of radio disturbance characteristics of information technology equipment		
<input type="checkbox"/> DIN VDE 0453	Cabled distribution systems, Equipment for receiving and/or distribution from sound and television signals		
<input type="checkbox"/> part 10			
<input type="checkbox"/> part 12			
<input type="checkbox"/> CE marking			(CE conformity marking)
<input type="checkbox"/> EN 60095	Safety requirements for mains operated electronic and related apparatus for household and similar general use	<input checked="" type="checkbox"/> EN 60950	Safety for information technology equipment including electrical business equipment
<input type="checkbox"/> EN 60335	Safety of household and similar electrical apparatus	<input type="checkbox"/> EN 55019-1	General and Safety requirements for uninterruptible power systems (UPS)

The manufacturer also declares the conformity of above mentioned product with the actual required safety standards in accordance with VDD 2006/95/EC

Manufacturer/Importer

Signature: Timmy Huang

(Stamp)

Date: Oct. 20, 2010

Name: Timmy Huang

## DECLARATION OF CONFORMITY

Per FCC Part 2 Section 2.1077(a)



Responsible Party Name: G.B.T. INC. (U.S.A.)

Address: 17358 Railroad Street

City of Industry, CA 91748

Phone/Fax No: (818) 854-9336/ (818) 854-9339

hereby declares that the product

Product Name: VCA Card

Model Number: GV-N480SO-15I

Conforms to the following specifications:

FCC Part 15, Subpart B, Section 15.107(a) and Section 15.109

(a), Class B Digital Device

### Supplementary Information:

This device complies with part 15 of the FCC Rules. Operation is subject to the following two conditions: (1) This device may not cause harmful and (2) this device must accept any interference received, including that may cause undesired operation.

Representative Person's Name: ERIC LU

Signature: Eric Lu

Date: Oct. 20, 2010

# Table of Contents

1. Introduction .....	4
1.1. Features .....	4
1.2. Minimum System Requirements .....	4
2. Hardware Installation .....	5
2.1. Board Layout .....	5
2.2. Hardware Installation .....	7
3. Software Installation .....	9
3.1. Driver and Utility Installation .....	9
3.1.1. Driver Installation .....	9
3.1.2. GIGABYTE Extreme Dual BIOS technology.....	15
3.2. Display Properties Pages .....	16
3.3. Accessing NVIDIA Control Panel.....	17
4. Troubleshooting Tips.....	25
5. Appendix .....	26
5.1. How to Reflash the BIOS in MS-DOS Mode .....	26
5.2. Resolutions and Color Depth Table (In Windows XP) .....	27
5.3. Regulatory Statements .....	29

# 1. Introduction

## 1.1. Features

- Powered by NVIDIA® GeForce™ GTX 480 Graphics Processing Unit (GPU)
- Supports PCI Express 2.0
- Integrated with 1536 MB GDDR5 memory
- Supports DirectX® 11
- Supports NVIDIA® SLI™ (Scalable Link Interface) technology<sup>(Note 1)</sup>
- Supports 2 Dual-Link DVI-I connectors
- Supports 1 mini HDMI connector
- Supports HDCP (High-Bandwidth Digital Content Protection) technology

## 1.2. Minimum System Requirements

- **Hardware**
  - 600-watt system power supply specification or above is recommended
  - Intel® Pentium® 4 or AMD Athlon™ XP class
  - 2GB system memory (4GB recommended)
  - Optical drive for software installation (CD-ROM or DVD-ROM drive)
- **Operating System**
  - Windows® 7
  - Windows® Vista
  - Windows® XP

- **SLI™ Configuration**

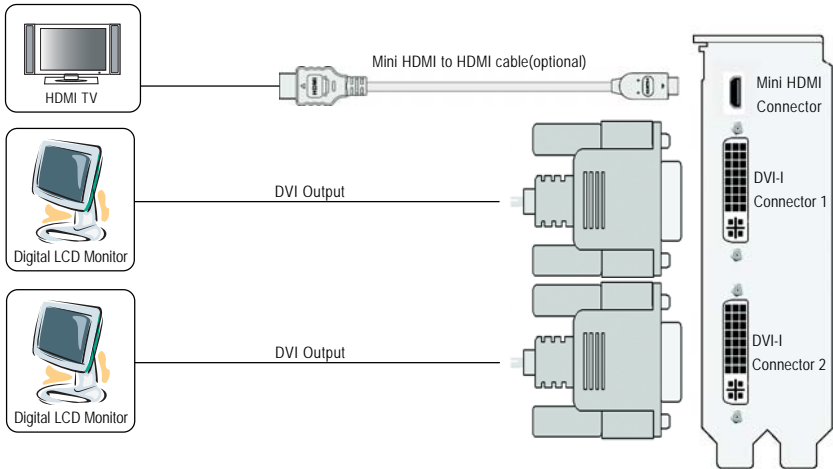
If you are planning on using this graphics card as part of an SLI system, the following are required:

- An SLI certified motherboard with two/three PCIe x16 slots and correct chipset driver
- Two GV-N480SO-151 for SLI configuration;  
Three GV-N480SO-151 for 3-way SLI configuration
- A power supply with 900-watt or above is recommended
- An SLI bridge connector or 3-way SLI bridge connector

(Note 1) SLI technology requires a PCI Express motherboard with two/three x16 physical connectors. Graphics cards working in an SLI configuration must be with the same model name (e.g. GV-N480SO-151) and from the same vendor (e.g. GIGABYTE TECHNOLOGY).

# 2. Hardware Installation

## 2.1. Board Layout





Expansion cards contain very delicate Integrated Circuit (IC) chips. To protect them against damage from static electricity, you should follow some precautions whenever you work on your computer.

1. Turn off your computer and unplug power supply.
2. Use a grounded wrist strap before handling computer components. If you do not have one, touch both of your hands to a safely grounded object or to a metal object, such as the power supply case.
3. Place components on a grounded antistatic pad or on the bag that came with the components whenever the components are separated from the system.

The card contains sensitive electric components, which can be easily damaged by static electricity, so the card should be left in its original packing until it is installed.

Unpacking and installation should be done on a grounded anti-static mat. The operator should be wearing an anti-static wristband, grounded at the same point as the anti-static mat.

Inspect the card carton for obvious damage. Shipping and handling may cause damage to your card. Be sure there are no shipping and handling damages on the card before proceeding.

●\* **DO NOT APPLY POWER TO YOUR SYSTEM IF THE GRAPHICS CARD IS DAMAGED.**

●\* **In order to ensure that your graphics card can work correctly, please use official GIGABYTE BIOS only. Using non-official GIGABYTE BIOS might cause problem(s) on the graphics card.**

# 2.2. Hardware Installation

Now that you have prepared your computer, you are ready to install your graphics card.

### Step 1.

Locate the PCI Express x16 slot. If necessary, remove the metal cover from this slot; then align your graphics card with the PCI Express x16 slot, and press it in firmly until the card is fully seated.



Make sure that the gold edge connector of the graphics card is securely inserted.



### Step 2.

Replace the screw to fasten the card in place, and replace the computer cover.



### Step 3.

This graphics card provides two DVI-I digital connectors and one mini HDMI connector. You can connect a monitor that supports DVI-I function. To connect a HDMI monitor, you need a cable or adapter to connect from the mini-HDMI connector to a HDMI monitor.



Connect a flat panel



To HDMI Monitor



To Flat Panel Display

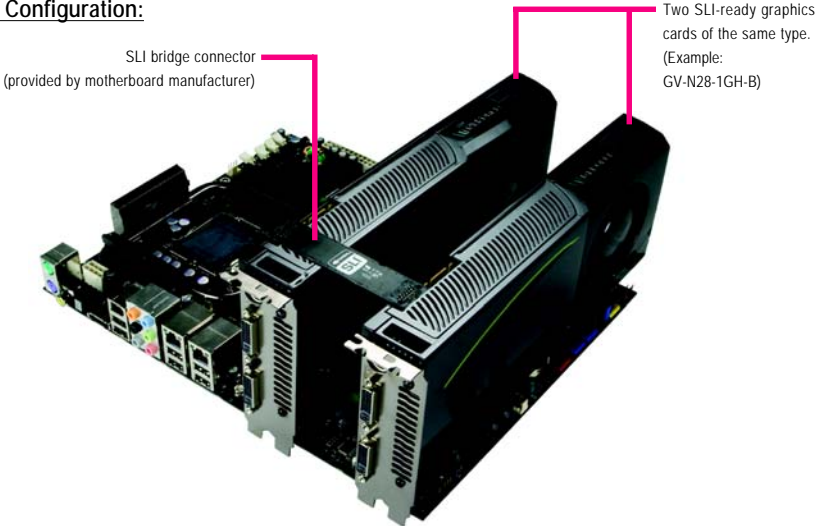


Connect a HDMI monitor

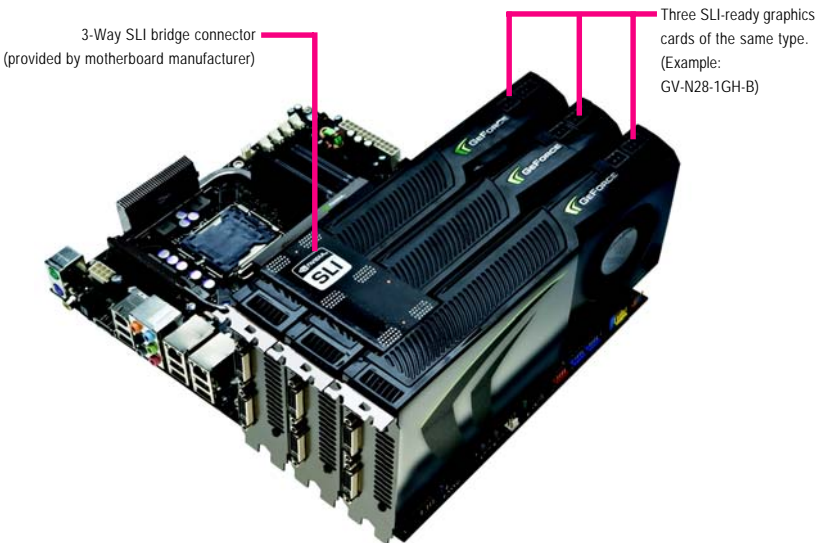
## How NVIDIA® SLI™ (Scalable Link Interface) technology works:

In an SLI configuration, two/three SLI-ready graphics cards of the same model and the same manufacturers are connected together via SLI bridge connector in a system that provides two/three x16 PCI Express slots to scale graphics performance. The picture below shows that two and three graphics cards are linked in parallel in an SLI configuration.

### SLI Configuration:



### 3-Way SLI Configuration:





# 3. Software Installation

Notice the following guidelines before installing the drivers:

1. First make sure your system has installed DirectX 9 or later version.
2. Make sure your system has installed the appropriate motherboard drivers (for the motherboard drivers, please contact the motherboard manufacturer.)

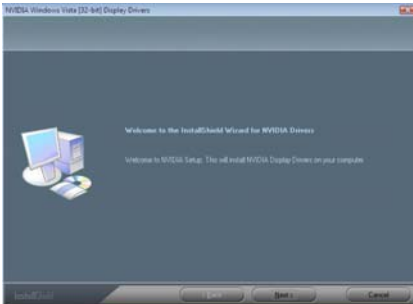
## 3.1. Driver and Utility Installation

### 3.1.1. Driver Installation

After installing the operating system, insert the driver disk into your optical drive. The driver Autorun screen is automatically displayed which looks like that shown in the screen shot below. (If the driver Autorun screen does not appear automatically, go to My Computer, double-click the optical drive and execute the **setup.exe** program.)



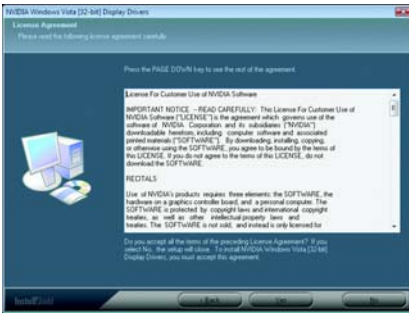
- Step 1:  
Click the **Install Display Driver** item.



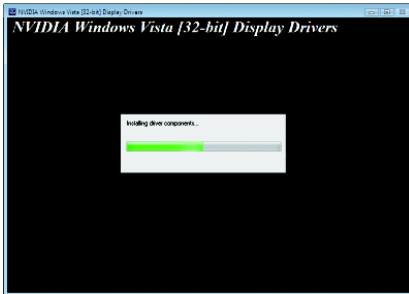
- Step 2:  
Click the **Next** button.



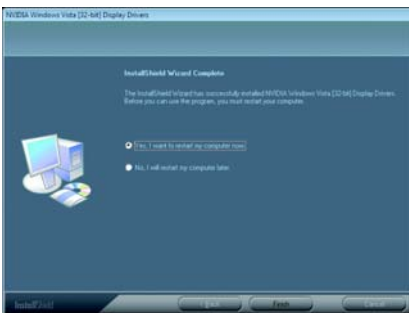
For software MPEG support in Windows XP, you must install DirectX first. Users who run Windows XP with Service Pack 2 or above do not need to install DirectX separately.



Step 3:  
Click the Yes button.



The system is installing the components.



Step 4:  
Click the **Finish** button to restart the computer.  
Then the driver installation is completed.

## GIGABYTE “OC Guru” Graphics Card Smart Tuner

GIGABYTE “OC Guru” graphics card smart tuner is a utility which helps users adjust card performance and monitor hardware information. Three modes are provided for different user needs in OC Guru: OC, Gaming, and Green modes. All GIGABYTE Super Overclock series cards equip with OC Guru for extreme performance boost.

### OC Mode:

Under option “Manual”, users have five profiles to save preferred GPU/Memory voltage, GPU/Memory clock, and fan speed settings. Under option “Auto”, all settings will follow stock settings. Users can set hot key for each profile.

(Note1) Shader clock is fixed for all NVIDIA 400 Super Overclock series.

(Note2) Adjustable voltage value will vary with different models.

Drag the bar left/right to decrease/increase GPU/Memory voltage

Allow users to adjust GPU/Memory voltage

Stock voltage settings

Hot-key setting for user profiles

Click to link to [www.gigabyte.com](http://www.gigabyte.com)

Display product information

Five profiles

Drag the bar left/right to decrease/increase fan speed

Stock fan speed setting

Allow users to adjust fan speed

Drag the bar left/right to decrease/increase GPU/Memory clock



Incorrectly doing overclock/overvoltage may result in damage to your system and reduce the useful life of the system components.

## Gaming Mode:

Extreme 3D gaming mode for enthusiastic users. Users can set preferred GPU/Memory clock and adjust screen brightness, contract value, and Gamma value under Gaming mode. Through GIGABYTE software On-Screen-Display (OSD), users can monitor hardware information in games and adjust display settings in real time. In addition, Gaming mode provides users with screenshots by hot-key.

Drag the bar left/right to decrease/increase display brightness, contract, and Gamma value

Stock GPU/Memory clock setting

Press "Apply" to apply preferred GPU/Memory clock

Drag the bar left/right to decrease/increase GPU/Memory clock

In game real-time On-Screen-Display hot-key setting

Screenshot output directory

Screenshot hot-key setting

Stock display setting

Press "Apply" to apply preferred display settings

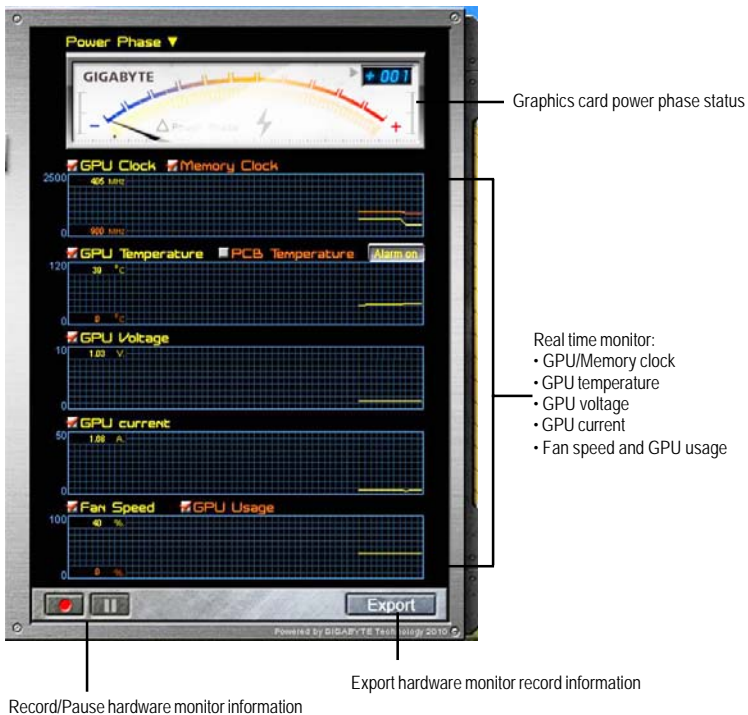
**Green Mode:**

The best 2D and 3D power saving setting to avoid unnecessary power consumption. Under Green mode, users can choose PWM working frequency to lower power consumption and monitor current GPU power consumption. In addition, Green mode provides information of power saved through this mode.



### Hardware Monitor:

Through GIGABYTE hardware monitor, users can easily monitor GPU/Memory clock, GPU temperature, GPU voltage, GPU current, Fan speed, and GPU usage. Moreover, users can easily record hardware information and export the data.



### 3.1.2. GIGABYTE Extreme Dual BIOS technology

As opposed to the traditional concept of dual BIOS chips where one is a main BIOS and the other one is a backup BIOS, GIGABYTE Extreme Dual BIOS technology contains two different BIOS chips designed for separate purposes. GIGABYTE Extreme Dual BIOS technology supports one-touch dual BIOS switching button to shift between two BIOSes, SOC (Super Overclock Series) Default BIOS and LN<sub>2</sub> BIOS. SOC Default BIOS allows gamers to build their dream machines to conquer digital battles on the web. LN<sub>2</sub> BIOS is especially designed for overclockers to avoid potential cold bug issues at extremely low temperatures. This feature equips selective GIGABYTE Super Overclock Series for extreme overclockability to break world records at any competitions.

#### How to use?

An Extreme Dual BIOS switch is meant to prevent “cold-bug” boot errors when using extreme cooling techniques such as liquid nitrogen, liquid helium and dry ice, etc. GIGABYTE Extreme Dual BIOS switch is available on certain GIGABYTE Super Overclock series graphics cards.

**SOC Default BIOS.** The factory default BIOS setting for Extreme-Dual-BIOS-ready SOC graphics card is SOC Default when graphics card hits the shelf (indicated by blue LED light, switch button pressed down).

**LN<sub>2</sub> BIOS.** For attempts of extreme overclocking, press button to switch from default BIOS to the alternative LN<sub>2</sub> BIOS (indicated by red LED light, switch button up). Reboot system to apply new BIOS settings.

\*The “cold bug” is an issue occurred when a processor ceases functioning or overclocking at a low (usually sub zero) temperature, preventing the use of extreme cooling methods such as dry ice or liquid nitrogen.

Warning: Before start of extreme benching with LN<sub>2</sub> BIOS, make sure extreme overclocking cooling accessories are ready.

#### Troubleshooting

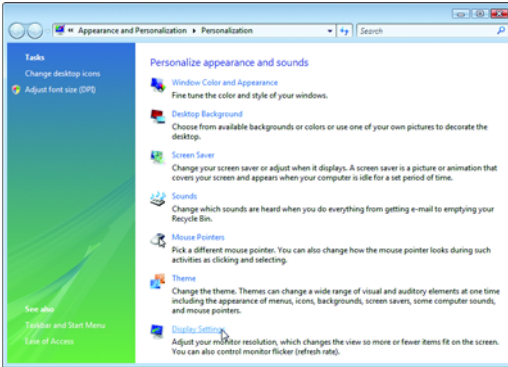
If LN<sub>2</sub> BIOS is damaged during extreme benching, press switch button again go back to factory default BIOS before rebooting system. SOC Default BIOS will serve as backup BIOS.

\*For system safety and stability, using SOC Default BIOS setting is highly recommended.

## 3.2. Display Properties Pages

### Display Settings (Resolutions and Color Quality for Windows)

To access **Display Settings** page, right-click on desktop and select **Personalize**, then the Personalization windows will show up. Select **Display Settings** to adjust the screen resolution and color quality settings.



You can move the slider to change the resolution.

You can click the item to change the color quality.

Click the **Advanced** button for advanced settings.



### 3.3. Accessing NVIDIA Control Panel

After installation of the display driver, right-click on the desktop and select **NVIDIA Control Panel**. The **NVIDIA Control Panel** is used to configure all your graphics card settings.



Right-click on the desktop and select **NVIDIA Control Panel**.

Or you can right-click on the desktop and select **Personalize**, and then the **Control Panel\Appearance Personalization\Personalization** window will show up. Select **Display Settings**. When the **Display Settings** dialog box appears, click **Advanced Settings**.

After clicking the **Advanced Settings** button in **Display Settings**, you'll see the **Generic PnP Monitor** and **NVIDIA GeForce GTX480 Properties** dialog box. Click the **GeForce GTX 480** tab to access the **NVIDIA Control Panel**.



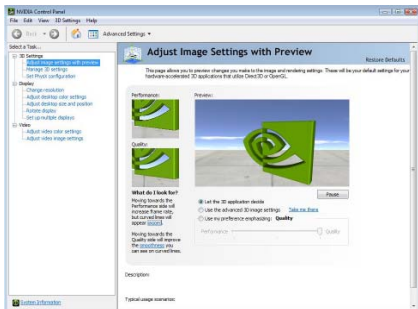
On the **GeForce GTX480** tab page, click **Start the NVIDIA Control Panel** to launch the **NVIDIA Control Panel**.



## 3D Settings

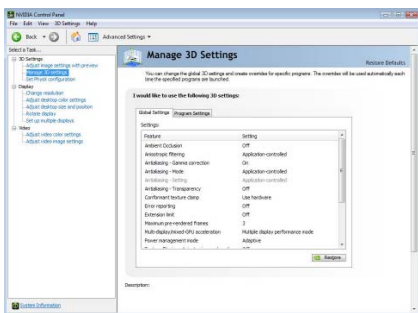
Tasks in the 3D Settings pages allow you to do the following:

- Change the image and rendering settings of your 3D applications and games that utilize Direct3D and OpenGL technology.
- Override the shipped clocked frequencies of your GPU and GPU memory to increase your GPU performance.
- Assign specific 3D settings to a game so that these settings automatically load when a game is launched.



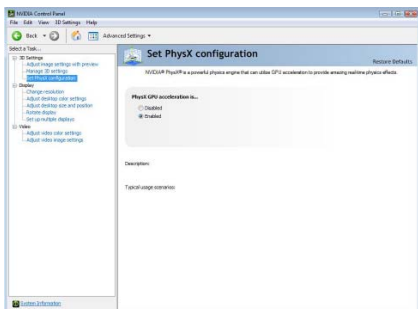
### ■ Adjust Image Settings with Preview

If you are unfamiliar with 3D technology or not an advanced graphics user, use the Adjust Image Settings with Preview page to preview any changes you make for improved image quality and rendering.



### ■ Manage 3D Settings <sup>(Note 1)</sup>

The Manage 3D Settings page enables you to establish default 3D settings to use for all your Direct3D or OpenGL applications and to establish a unique set of 3D settings for a particular game or application.



### ■ Set PhysX configuration

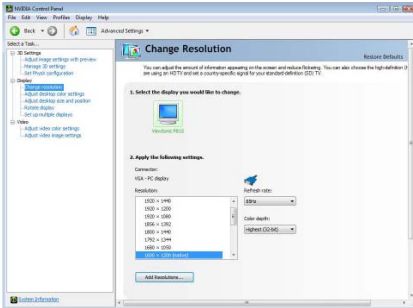
NVIDIA® PhysX® is a powerful physics engine that can utilize GPU acceleration to provide amazing real-time physics effects.

(Note 1) This item is present only in Advanced view mode.

## Display

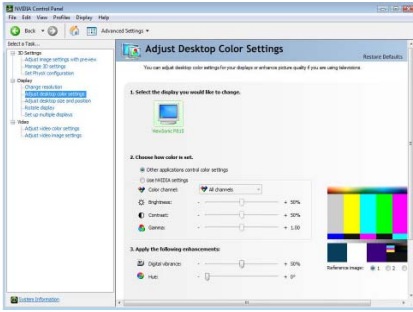
A variety of display features enable you to further manipulate and configure your display settings to optimize the use of your displays. Tasks in the Display pages allow you to do the following:

- Move CRT screen position
- Change resolution
- Adjust desktop color settings
- Rotate display
- Manage custom resolutions <sup>(Note)</sup>
- Set up multiple displays



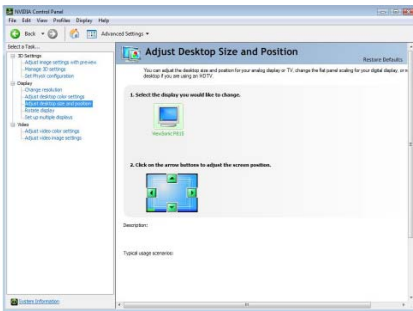
### ■ Change Resolution

Using the Change Resolution controls, you can change the color setting, reduce screen flickering, or adjust the amount of information appearing on your display.



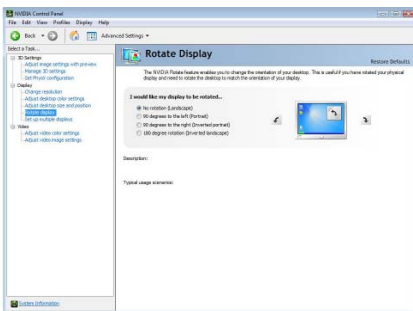
### ■ Adjust Desktop Color Settings

Use this page to set the contrast, sharpness, and color depth (Digital Vibrance) of the images on your desktop. These changes will not affect any video playback. To change video color settings, go to Adjust Video Color Settings under the Video and TV section from the Start page.



### ■ Adjust Desktop Color Settings

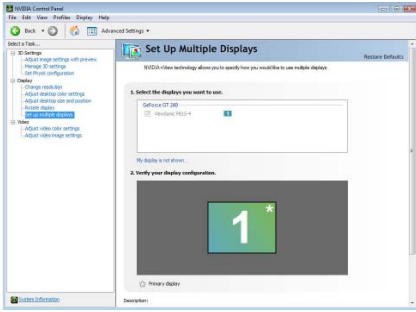
You can adjust desktop color settings for your displays or enhance picture quality if you are using televisions.



### ■ Rotate Display

The NVIDIA Rotate features enable you to change the orientation of your desktop to portrait, landscape, and inverted modes. This is useful if you have rotated your physical display and need to rotate the desktop to match the orientation of your display.

(Note) This item is present only in Advanced view mode.

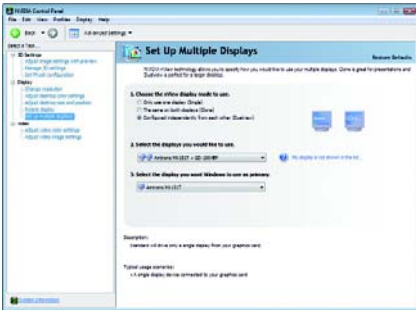


## ■ Set Up Multiple Displays

NVIDIA nView technology enables you to view your desktop in one of several multi-display modes to make the best use of the displays (monitors) that are connected to your computer.

## Dual-Monitor Setup

You can set the display to output from two monitors on the Set Up Multiple Displays page.



Select your preferred nView display modes here.

- Only use one display (Single)
- The same on both display (Clone)
- Configured independently from each other (Dualview)
- As one large horizontal desktop (Horizontal span) <sup>(Note)</sup>
- As one large vertical desktop (Vertical span) <sup>(Note)</sup>

### (1) The same on both display (Clone)

Clone mode indicates that both displays in the display pair show images of the same desktop.



Clone Mode

### (2) Configured independently from each other (Dualview)

Dualview mode indicates that both displays in the display pair function as one virtual desktop. Unlike Horizontal Span or Vertical Span mode, Dualview treats each display as a separate device. This means that the taskbar will not be stretched across displays and 3D applications are not accelerated as efficiently as when the application spans displays.



Dualview Mode

(Note) This item is present only in Windows XP.

**(3) As one large horizontal desktop**  
**(Horizontal span)** <sup>(Note 1)</sup>

Horizontal Span mode indicates that both displays in the display pair function as one wide virtual desktop. The width of each display is half the width of the total virtual desktop width.



Horizontal Span Mode

**(4) As one large vertical desktop**  
**(Vertical span)** <sup>(Note 1)</sup>

Vertical Span mode indicates that both displays in the display pair function as one tall virtual desktop. The height of each display is half the height of the total virtual desktop height.



Vertical Span Mode

Display Matrix	Model	GV-N480SO-15I
	CRT <sup>(Note 2)</sup> +HDMI	Yes
	CRT+DVI <sup>(Note 2)</sup>	Yes
	DVI+HDMI	Yes
	DVI+HDMI+CRT	No
	DVI +DVI	Yes
	CRT+CRT <sup>(Note 2)</sup>	Yes

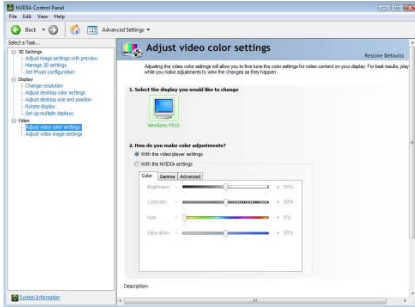
(Note 1) This item is present only in Windows XP.

(Note 2) By a DVI-to-D-Sub adapter.

## Video & Television

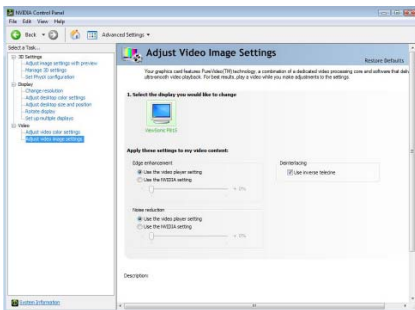
Video and television features are similar to those for analog for optimal viewing. Tasks in the Video & Television pages allow you to do the following:

- Adjust your television picture quality and video color settings for the best possible viewing in its environment.
- Change the position and size of the desktop video to best fit your television screen.



### ■ Adjust Video Color Settings

Use the controls on this page to fine tune the color settings for video content on your display. Select one of the test images to monitor your changes. For best results, play a video while you make adjustment to view the changes as they happen.



### ■ Adjust Video Image Settings

Use the controls on this page to fine tune the image settings for video content on your display. You can choose to use inverse telecine, adjust edge sharpness, or apply noise filtering. For best results, play a video while you make adjustment to view the changes as they happen.

Note:

Support for some features under Windows Vista is in development and may not be available with your ForceWare graphics driver version. Consult the release notes for updated information on supported features.



## 4. Troubleshooting Tips

The following troubleshooting tips may help if you experience problems. Contact your dealer or GIGABYTE for more advanced troubleshooting information.

- Check that the card is seated properly in the PCI Express x16 slot.
- Ensure that the display cable is securely fastened to the card's display connector.
- Make sure that the monitor and computer are plugged in and receiving power.
- If necessary, disable any built-in graphics capabilities on your motherboard. For more information, consult your computer's manual or manufacturer.  
(NOTE: Some manufacturers do not allow the built-in graphics to be disabled or to become the secondary display.)
- Make sure you selected the appropriate display device and graphics card when you install the graphics driver.
- Restart your computer.  
Press <F8> on your keyboard after system starts up. When the Windows Advanced Options Menu appears, select Safe Mode and press <Enter>.  
After getting into Safe Mode, in Device Manager check whether the driver for the graphics card is correct.
- For more assistance, use the Troubleshooting Guide located in the Windows Help or contact your computer manufacturer.
- If you are not able to find the desired monitor color/resolution settings:  
The color and screen resolution options available for selection depend on the graphics card being installed.



If necessary, adjust your monitor's setting using monitor's adjust panel to make the screen look focused, crisp, and sharp. (Please refer to the monitor's manual.)

# 5. Appendix

## 5.1. How to Reflash the BIOS in MS-DOS Mode

1. Extract the downloaded Zip file to your hard disk(s) or floppy disk. This procedure assumes drive A.
2. Restart the computer in MS-DOS mode. (You may need a startup disk to restart the computer in MS-DOS mode.)
3. Change the command prompt to A:\>.
4. To back up the current BIOS, at the A:\> prompt, type [BIOS flash utility name] -s [BIOS file name] (example: gvf19 -s n480S015I.F1) and press **Enter**.
5. To flash BIOS, at the A:\> prompt, type [BIOS flash utility name] -p [BIOS file name] (example: gvf19 -p n480S015I.F2) and press **Enter**.
6. Wait until it's done, then restart your computer.

## 5.2. Resolutions and Color Depth Table (In Windows XP)

GeForce GTX480 Single Display Standard Modes

Display Screen Resolution	Refresh Rate (Hz)	Color Depth (bpp)		
		8bpp(256 color) Standard mode	16bpp(65K color) High mode	32bpp(16.7M) True mode
320 x 200	60-75	✓	✓	✓
320 x 240	60-75	✓	✓	✓
400 x 300	60-75	✓	✓	✓
480 x 360	60-75	✓	✓	✓
512 x 384	60-75	✓	✓	✓
640 x 400 (16:10)	60-75	✓	✓	✓
640 x 480	60-240	✓	✓	✓
720 x 480	60	✓	✓	✓
720 x 576	50-60	✓	✓	✓
800 x 600	60-240	✓	✓	✓
848 x 480	60-240	✓	✓	✓
960 x 600 (16:10)	60-240	✓	✓	✓
1024 x 768	60-200	✓	✓	✓
	240	✓	✓	X
1088 x 612 (16:9)	60-200	✓	✓	✓
	240	✓	✓	X
1152 x 864	60-170	✓	✓	✓
	200	✓	✓	X
1280 x 720 (16:9)	60-150	✓	✓	✓
	170	✓	✓	X
1280 x 768	60-150	✓	✓	✓
	170	✓	✓	X
1280 x 800	60-150	✓	✓	✓
	170	✓	✓	X
1280 x 960	60-150	✓	✓	✓
	170	✓	✓	X
1280 x 1024	60-150	✓	✓	✓
	170	✓	✓	X
1360 x 768	60-150	✓	✓	✓
	170	✓	✓	X
1600 x 900 (16:9)	60-120	✓	✓	✓
	140-150	✓	✓	X
1600 x 1024	60-100	✓	✓	✓
	120	✓	✓	X

To be continued...

Display Screen Resolution	Refresh Rate (Hz)	Color Depth (bpp)		
		8bpp(256 color) Standard mode	16bpp(65K color) High mode	32bpp(16.7M) True mode
<b>1600 x 1200</b>	60-100	✓	✓	✓
	120	✓	✓	X
<b>1920 x 1080 (16:9)</b>	60-85	✓	✓	✓
	100	✓	✓	X
<b>1920 x 1200 (16:10)</b>	60-85	✓	✓	✓
	100	✓	✓	X
<b>1920 x 1440</b>	60-85	✓	✓	✓
<b>2048 x 1536</b>	60-85	✓	✓	✓
<b>2560 x 1600 (Dual-Link)</b>	60	✓	✓	✓

\* This table is for reference only. The actual resolutions supported depend on the monitor you use.

## 5.3. Regulatory Statements

### Regulatory Notices

This document must not be copied without our written permission, and the contents there of must not be imparted to a third party nor be used for any unauthorized purpose. Contravention will be prosecuted. We believe that the information contained herein was accurate in all respects at the time of printing. GIGABYTE cannot, however, assume any responsibility for errors or omissions in this text. Also note that the information in this document is subject to change without notice and should not be construed as a commitment by GIGABYTE.

### Our Commitment to Preserving the Environment

In addition to high-efficiency performance, all GIGABYTE motherboards fulfill European Union regulations for RoHS (Restriction of Certain Hazardous Substances in Electrical and Electronic Equipment) and WEEE (Waste Electrical and Electronic Equipment) environmental directives, as well as most major worldwide safety requirements. To prevent releases of harmful substances into the environment and to maximize the use of our natural resources, GIGABYTE provides the following information on how you can responsibly recycle or reuse most of the materials in your "end of life" product.

### Restriction of Hazardous Substances (RoHS) Directive Statement

GIGABYTE products have not intended to add and safe from hazardous substances (Cd, Pb, Hg, Cr+6, PBDE and PBB). The parts and components have been carefully selected to meet RoHS requirement. Moreover, we at GIGABYTE are continuing our efforts to develop products that do not use internationally banned toxic chemicals.

### Waste Electrical & Electronic Equipment (WEEE) Directive Statement

GIGABYTE will fulfill the national laws as interpreted from the 2002/96/EC WEEE (Waste Electrical and Electronic Equipment) directive. The WEEE Directive specifies the treatment, collection, recycling and disposal of electric and electronic devices and their components. Under the Directive, used equipment must be marked, collected separately, and disposed of properly.

### WEEE Symbol Statement



The symbol shown below is on the product or on its packaging, which indicates that this product must not be disposed of with other waste. Instead, the device should be taken to the waste collection centers for activation of the treatment, collection, recycling and disposal procedure. The separate collection and recycling of your waste equipment at the time of disposal will help to conserve natural resources and ensure that it is recycled in a manner that protects human health and the environment. For more information about where you can drop off your waste equipment for recycling, please contact your local government office, your household waste disposal service or where you purchased the product for details of environmentally safe recycling.

- When your electrical or electronic equipment is no longer useful to you, "take it back" to your local or regional waste collection administration for recycling.
- If you need further assistance in recycling, reusing in your "end of life" product, you may contact us at the Customer Care number listed in your product's user's manual and we will be glad to help you with your effort.

Finally, we suggest that you practice other environmentally friendly actions by understanding and using the energy-saving features of this product (where applicable), recycling the inner and outer packaging (including shipping containers) this product was delivered in, and by disposing of or recycling used batteries properly. With your help, we can reduce the amount of natural resources needed to produce electrical and electronic equipment, minimize the use of landfills for the disposal of "end of life" products, and generally improve our quality of life by ensuring that potentially hazardous substances are not released into the environment and are disposed of properly.

### China Restriction of Hazardous Substances Table

The following table is supplied in compliance with China's Restriction of Hazardous Substances (China RoHS) requirements:



关于符合中国《电子信息产品污染控制管理办法》的声明  
 Management Methods on Control of Pollution from Electronic Information Products  
 (China RoHS Declaration)

产品中有毒有害物质或元素的名称及含量  
 Hazardous Substances Table

部件名称 (Parts)	有毒有害物质或元素 (Hazardous Substances)					
	铅 (Pb)	汞 (Hg)	镉 (Cd)	六价铬 (Cr (VI))	多溴联苯 (PBB)	多溴二苯醚 (PBDE)
PCB板 PCB	○	○	○	○	○	○
结构件及风扇 Mechanical parts and Fan	×	○	○	○	○	○
芯片及其他主动零件 Chip and other Active components	×	○	○	○	○	○
连接器 Connectors	×	○	○	○	○	○
被动电子元件 Passive Components	×	○	○	○	○	○
线材 Cables	○	○	○	○	○	○
焊接金属 Soldering metal	○	○	○	○	○	○
助焊剂、散热膏、标签及其他耗材 Flux, Solder Paste, Label and other Consumable Materials	○	○	○	○	○	○
○:表示该有毒有害物质在该部件所有均质材料中的含量均在SJ/T11363-2006标准规定的限量要求以下。 Indicates that this hazardous substance contained in all homogenous materials of this part is below the limit requirement SJ/T 11363-2006						
×:表示该有毒有害物质至少在该部件的某一均质材料中的含量超出SJ/T11363-2006标准规定的限量要求。 Indicates that this hazardous substance contained in at least one of the homogenous materials of this part is above the limit requirement in SJ/T 11363-2006						
对销售之日的所发售产品, 本表显示我公司供应链的电子信息产品可能包含这些物质。注意: 在所售产品中可能会也可能不会含有所有列出的部件。 This table shows where these substances may be found in the supply chain of our electronic information products, as of the date of the sale of the enclosed products. Note that some of the component types listed above may or may not be a part of the enclosed product.						



