

GV-RX60P128D(DE)

Radeon X600 Pro Graphics Accelerator

User's Manual

Rev. 103

12MD-RX60P128D-103

Copyright

© 2004 GIGABYTE TECHNOLOGY CO., LTD

Copyright by **GIGA-BYTE TECHNOLOGY CO., LTD.** ("GBT"). No part of this manual may be reproduced or transmitted in any form without the expressed, written permission of **GBT**.

Trademarks

Third-party brands and names are the property of their respective owners.

Notice

Please do not remove any labels on VGA card, this may void the warranty of this VGA card

Due to rapid change in technology, some of the specifications might be out of date before publication of this booklet.

The author assumes no responsibility for any errors or omissions that may appear in this document nor does the author make a commitment to update the information contained herein.

Table of Contents

1. Introduction	3
1.1. Features	3
1.2. Minimum System Requirement	3
2. Hardware Installation	4
2.1. Board Layout	4
2.2. Hardware Installation	7
3. Software Installation	9
3.1. Win® XP Driver and Utilities Installation	9
3.1.1. Operating System Requirement	9
3.1.2. DirectX Installation	10
3.1.3. Driver Installation	11
3.1.4. Utilities on Driver CD	13
3.1.5. Taskbar Icon	15
3.1.6. Display Properties Pages	19
3.2. Win® 2000 Driver Installation	29
4. Troubleshooting Tips	30
5. Appendix	31
5.1. How to Reflash the BIOS	31
5.1.1. Reflash BIOS in MS-DOS mode	31
5.1.2. Reflash BIOS in Windows mode	31
5.2. Resolutions and Color Depth Table (In Windows® XP)	32

1. Introduction

1.1. Features

- Powered by ATI X600 Pro Visual Processing Unit (VPU)
- Supports the newest PCI Express x 16
- Integrated with 128MB DDR memory
- Supports DirectX 9.0
- Supports D-Sub, TV-Out and DVI connectors

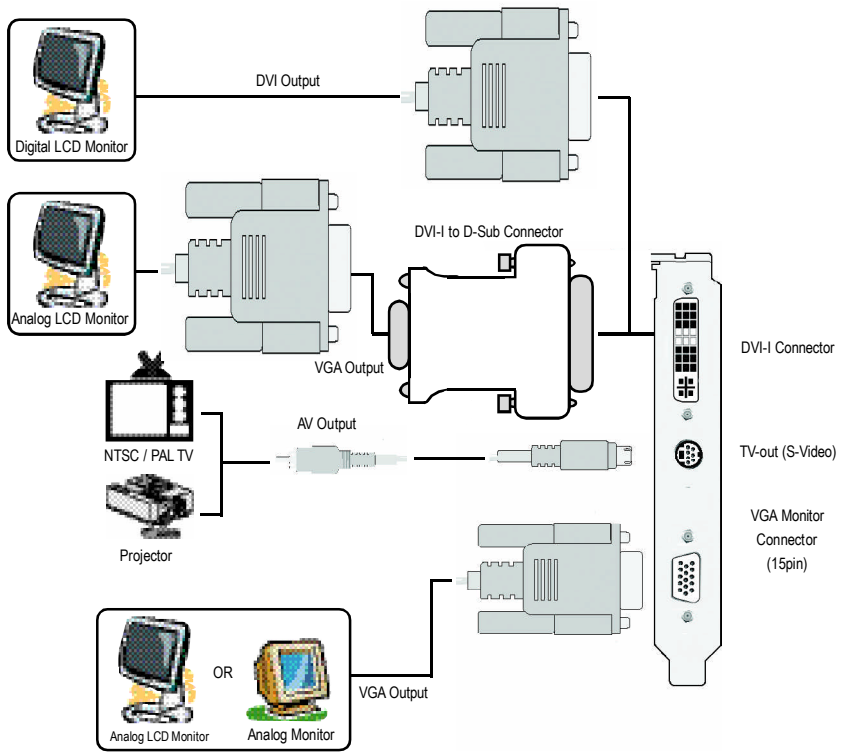
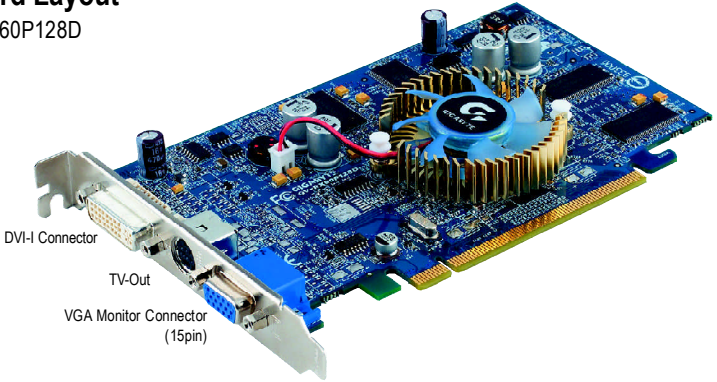
1.2. Minimum System Requirement

- IBM® or 100% PC compatible with Pentium® III 650MHz or AMD Athlon 650MHz class processor or higher
- One PCI Express x 16 slot
- Operating Systems Win® 2000 / Win® XP
- 64MB system memory
- 50MB of available disk space for full installation
- CD-ROM or DVD-ROM drive

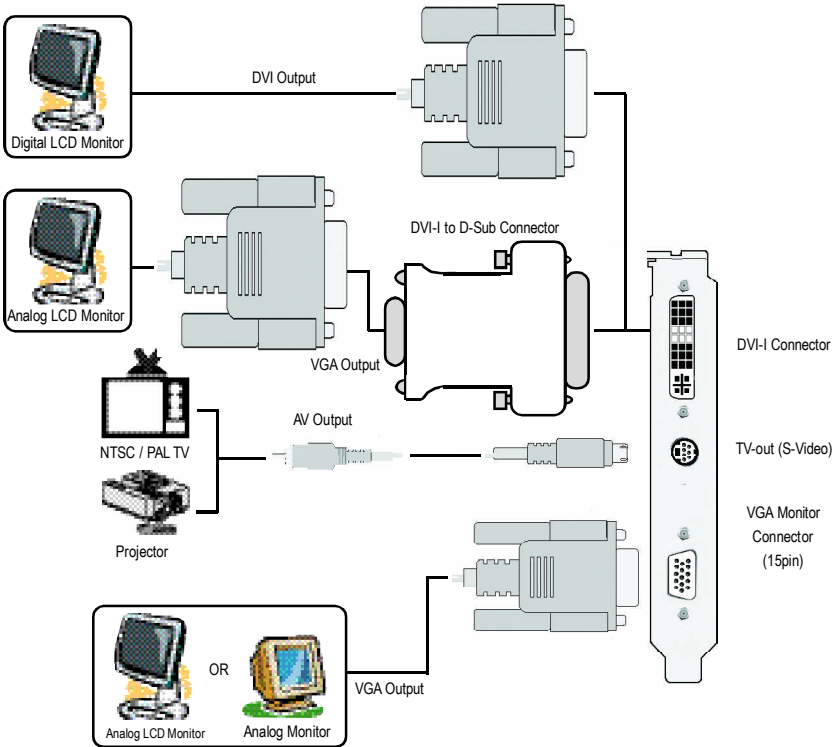
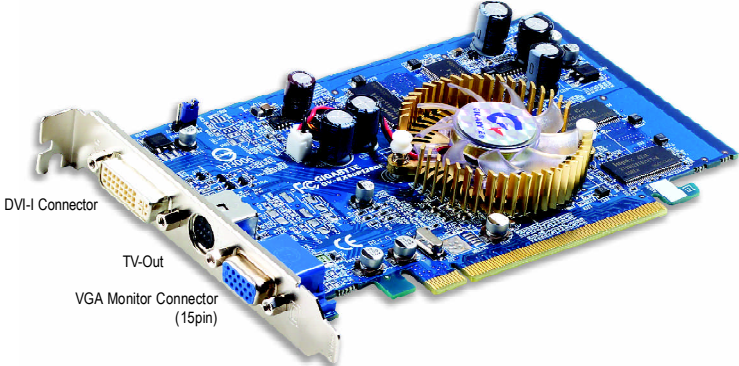
2. Hardware Installation

2.1. Board Layout

1) GV-RX60P128D



2) GV-RX60P128DE





Expansion cards contain very delicate Integrated Circuit (IC) chips. To protect them against damage from static electricity, you should follow some precautions whenever you work on your computer.

1. Turn off your computer and unplug power supply.
2. Use a grounded wrist strap before handling computer components. If you do not have one, touch both of your hands to a safely grounded object or to a metal object, such as the power supply case.
3. Place components on a grounded antistatic pad or on the bag that came with the components whenever the components are separated from the system.

The card contains sensitive electric components, which can be easily damaged by static electricity, so the card should be left in its original packing until it is installed. Unpacking and installation should be done on a grounded anti-static mat. The operator should be wearing an anti-static wristband, grounded at the same point as the anti-static mat.

Inspect the card carton for obvious damage. Shipping and handling may cause damage to your card. Be sure there are no shipping and handling damages on the card before proceeding.

- **DO NOT APPLY POWER TO YOUR SYSTEM IF IT HAS BEEN DAMAGED ON THE CARD.**
- **In order to ensure your graphics card working correctly, please use official Gigabyte BIOS only. Use none official Gigabyte BIOS might cause problem on the graphics card.**

2.2. Hardware Installation

Installing Your Graphics card.

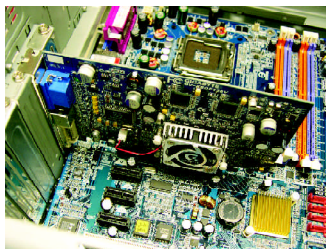
Now that you have prepared your computer, you are ready to install your graphics accelerator card.

To install your graphics accelerator card:

1. Power off the computer and monitor, then disconnect the display cable from the back of your computer.

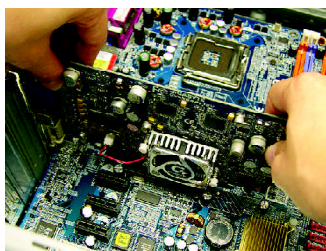


2. Remove the computer cover. If necessary, consult your computer's manual for help in removing the cover.

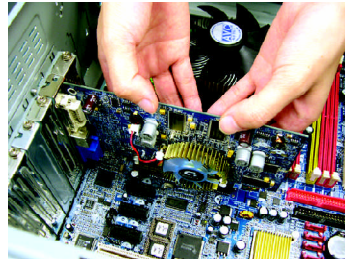


3. Remove any existing graphics card from your computer.

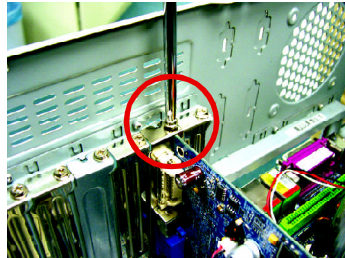
Or, if your computer has any on-board graphics capability, you may need to disable it on the motherboard. For more information, see you computer documentation.



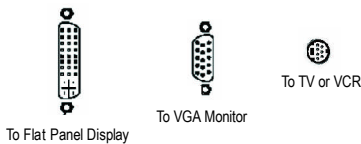
4. Locate the PCI Express x 16 slot. If necessary, remove the metal cover from this slot; then align your graphics card with the PCI Express x 16 slot, and press it in firmly until the card is fully seated.



5. Replace the screw to fasten the card in place, and replace the computer cover.



6. Plug the display cable into your card; then turn on the computer and monitor. If your graphics card came with a DVI connector, you can connect a flat panel display to the appropriate connector, as shown below...



You are now ready to proceed with the installation of the graphics card drivers. Please refer to next chapter for detailed instructions.

3. Software Installation

In this manual, we assume that your CD-ROM Drive letter to be Drive D:

The installation of Win® 2000 / Win® XP drivers is very simple. When you insert the driver CD into your CD-ROM drive, you can see the AUTORUN window (if it does not show up, run "D:\setup.exe"). Then you can follow the guides to setup your graphics card driver. (Please follow the subsection 3.1.3 "Driver installation" to install the driver for your graphics accelerator.)

3.1. Win® XP Driver and Utilities Installation

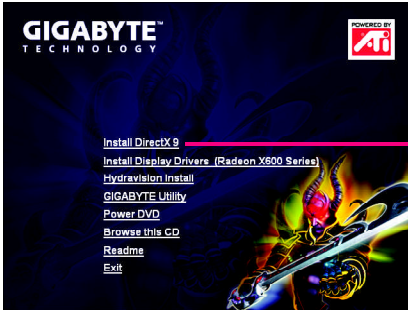
3.1.1. Operating System Requirement

- When loading the graphics card drivers for the system, please make sure your system has installed DirectX 9 or later version.
- If you install the graphics card drivers for the motherboard, which consist of SIS, or VIA chipsets, please install the appropriate driver program for that motherboard. Or please contact your motherboard nearest dealer for motherboard driver.

3.1.2. DirectX Installation

Install Microsoft DirectX to enable 3D hardware acceleration support for Windows® 2000 or Windows® XP to achieve better 3D performance.

- Note: For software MPEG support in Windows® 2000 or Windows® XP, you must install DirectX first.

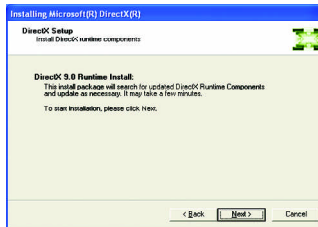


Step 1. When autorun window show up, click **Install DirectX 9** item.

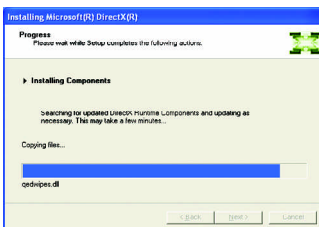
Click "Install DirectX 9" item.



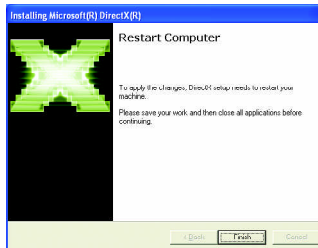
Step 2. Choose **I accept the agreement** and click "Next" button.



Step 3. Click "Next" button.



Installing the components.



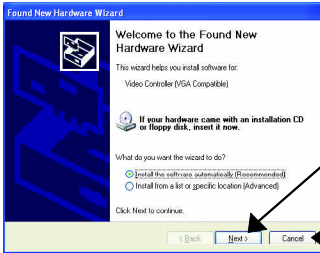
Step 4. Click "Finish" to restart computer. Then the DirectX 9 installation is completed.

3.1.3. Driver Installation

A. New hardware found

After the graphics card is inserted into your computer at the first time, the windows will automatically detect a new hardware in the system and pop out a "New Hardware Found" message. The following is the step-by-step installation guide.

Step 1: Found new hardware wizard: Video controller (VGA Compatible)

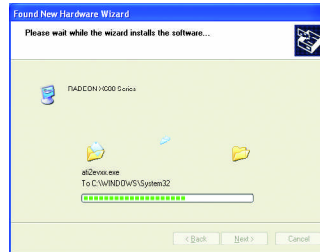
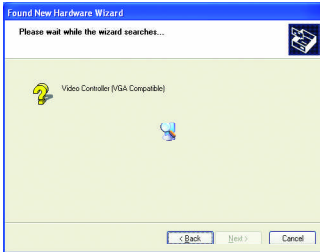


Click "Next" button to install the driver. (There is a driver CD disk that came with your graphics accelerator, please insert it now.)

Or click the "Cancel" button to install the driver from AUTORUN window.

Step 2: Found new hardware wizard: Searching and installing

The wizard will search for the driver and install it automatically.



Step 3: Found new hardware wizard: Finish

Click the "Finish" button to finish the installation.



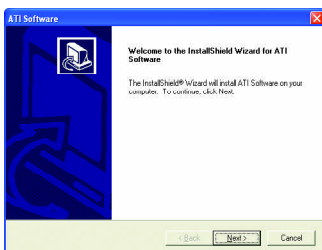
B. Driver installation (Autorun Window)

Insert the driver CD disk into your CD-ROM, and then you can see the AUTORUN window. If it does not show up, please run "D:\setup.exe".

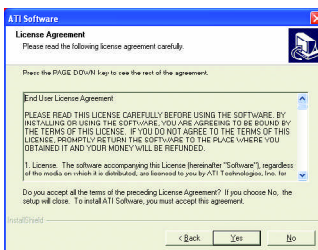


Step 1. When autorun window show up, click **Install Display Drivers (Radeon X800 Series)** item.

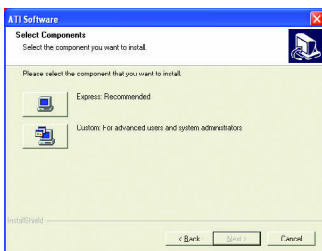
Click "Install Display Driver" item.



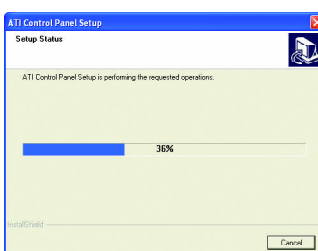
Step 2. Click "Next" button.



Step 3. Click "Yes" button.



Step 4. Click "Express" or "Custom" icon.



Windows installing the components.

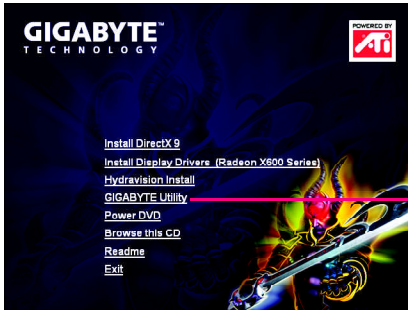


Step 5. Click "Finish" button to restart computer. Then the driver installation is completed.

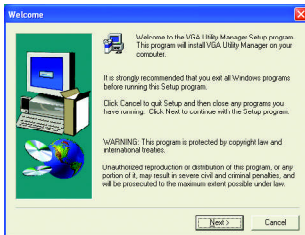
3.1.4. Utilities on Driver CD

Insert the driver CD disk into your CD-ROM, and then you can see the AUTORUN window. If it does not show up, please run "D:\setup.exe".

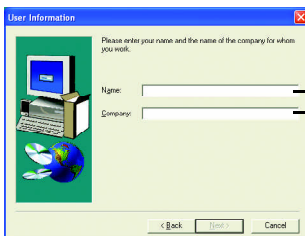
- Install GIGABYTE Utility:



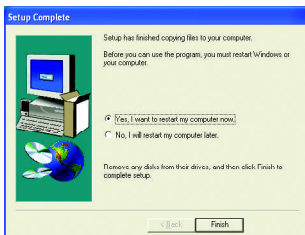
Click "GIGABYTE Utility" item.



Step 2. Click "Next" button.

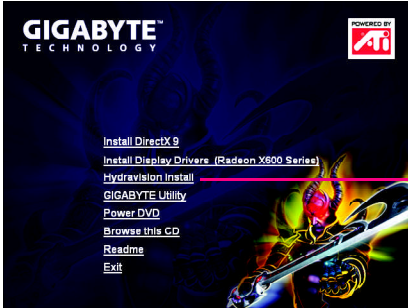


Step 3. Enter your name and company.

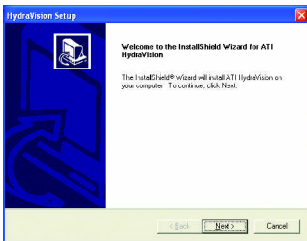


Step 4. Click "Finish" button to restart computer. Then the GIGABYTE Utility installation is completed.

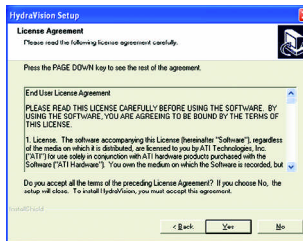
● Install Hydravision :



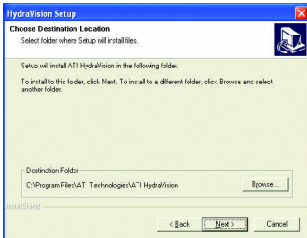
Click "Hydravision Install" item.



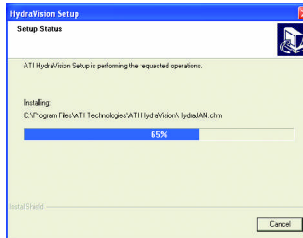
Step 2. Click "Next" button.



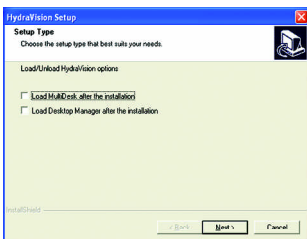
Step 3. Click "Yes" button.



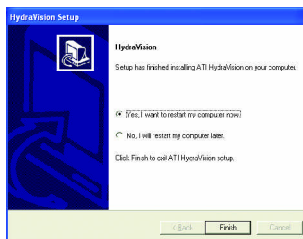
Step 4. Click "Next" button.



Windows installings the components.




Step 5. Click "Next" button.



Step 6. Click "Finish" button to restart computer. Then the Hydravision Install is completed.

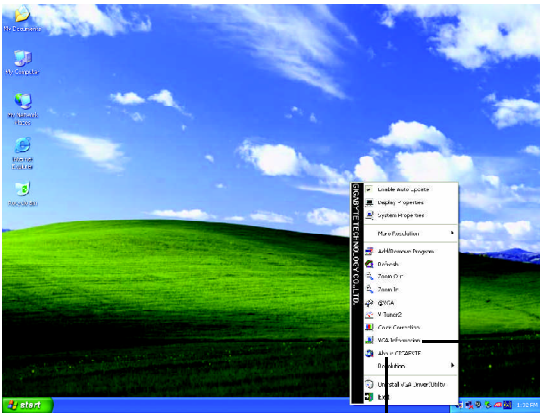
3.1.5. Taskbar Icon

After installation of the display drivers, you will find an GIGABYTE icon  on the taskbar's status area. Right-clicking this icon opens the GIGABYTE control panel, showing a menu composed of shortcuts of the graphics card's enhanced and other functions.

You may click the "Display Properties" item, and then click Settings. Click "Advanced" after clicking Settings. Click the appropriate tab to change your display settings.



Right click the icon.

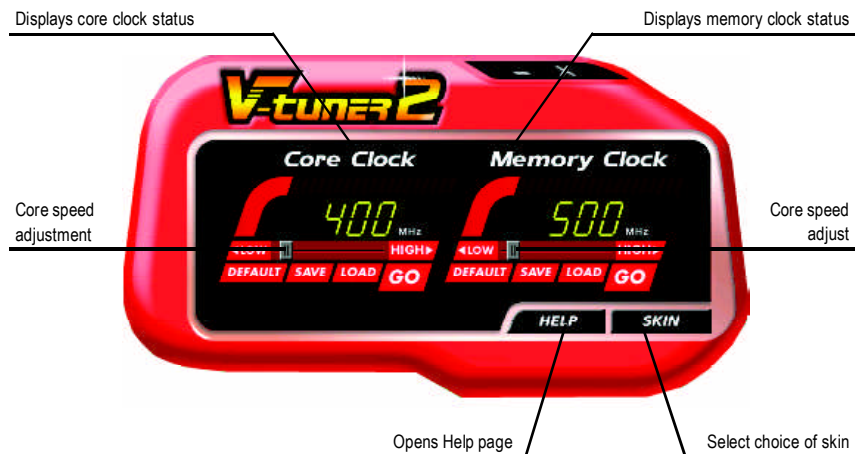


Click "VGA Information" item into the "VGA Info" and "Color Adjust" tabs.

You can link to GIGABYTE website for updated information about the graphics accelerator, latest drivers, and other information.

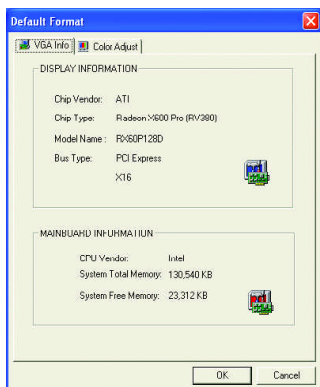
V-Tuner 2 (Overclock Utility)

V-Tuner 2 lets you adjust the working frequency of the graphic engine and video memory (Core Clock and Memory Clock).



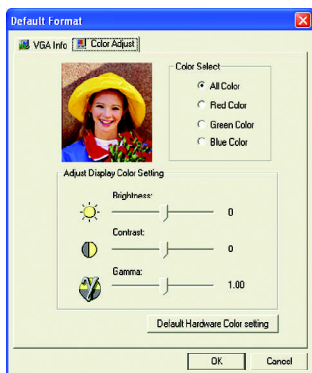
VGA Information


VGA Info lists the relevant information about your card.

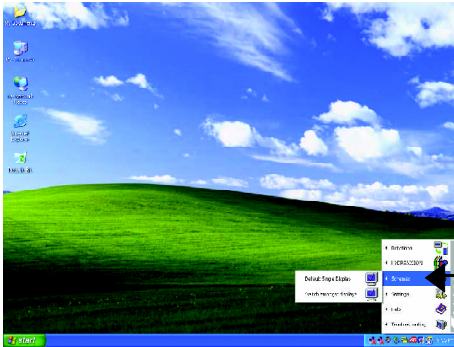


Color Adjust

Color Adjust allows you to make color adjustments, such as brightness, contrast and gamma values for each or all of RGB colors.



After installation of the display drivers, you will find an ATI icon  on the taskbar's status area. Click this icon to open the ATI control panel.



1. Using Single Display

HYDRAVISION™

HYDRAVISION™ and the Desktop Manager are activated whenever Windows® starts. Installing HYDRAVISION™ adds menu options to the ATI Icon.

Click on the ATI icon to access the application's features and help, or to unload the HYDRAVISION™ Desktop Manager.



2. Hydravision

HYDRAVISION™ is primarily software designed for multiple monitor settings.

GV-RX60P128D(DE) graphic cards that have more than one display output can benefit fully from this software. GV-RX60P128D(DE) with only one display output can still take advantage of the many features of HYDRAVISION™.

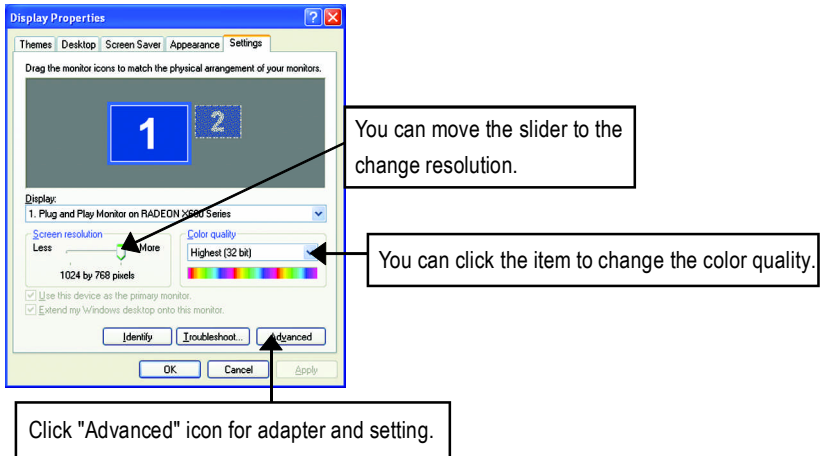
HYDRAVISION™ installation enables the Desktop Manager and creates a Windows® program group for HYDRAVISION™ display management software.

3.1.6. Display Properties pages

To access Display Properties pages, right-click the GIGABYTE icon on the taskbar and select **Display Properties** or right-click on Desktop and then select **Properties**. The **Display Properties** dialog box shows the information of display adapter, color, the range of display area, and the refresh rate.

Settings (Resolutions and Color depth for Windows)

You may adjust the screen resolution and color quality settings in this dialog box.

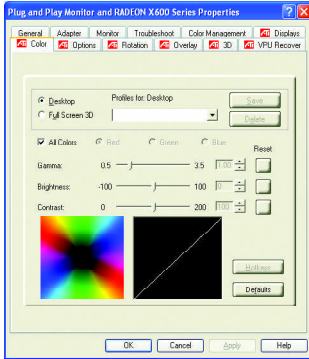


Click "Advanced", into details settings:

Display	Model	GV-RX60P128D(DE)
Matrix	CRT+TV	Yes
	CRT+DVI	Yes
	DVI+TV	Yes
	DVI+TV+CRT	Yes

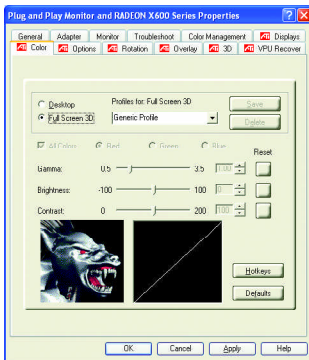
Color Properties:

The **Color Properties** is used to adjust the color settings. It also allows gamma control for video playing of the Video Overlay. The color settings affect all display devices mapped to the view. You can change red, green, and blue display colors. Set Desktop and Video Overlay brightness (gamma) levels can also be changed.



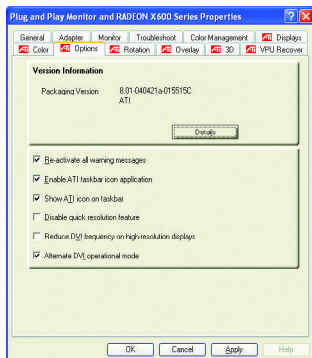
- **Desktop** increases or decreases the color brightness of your desktop. The higher the gamma value, the higher the brightness and contrast of your display.
- **All Colors checkbox** adjust the RGB individually or adjust all three colors at the same time.
- **Gamma/Brightness/Contrast** adjust the color by moving the slider with your mouse, to increase or decrease the color gamma/brightness/contrast of Direct 3D and OpenGL games played in fullscreen mode. (NOTE: Game Gamma is NOT supported in Windows NT4.0)

- **Default** resets the desktop brightness and color settings to the default values.



- **Full Screen 3D radio button** Select Full Screen 3D to configure the color settings for your 3D application. Note that the configured settings will only be apparent within a full screen 3D application environment.

Options Properties:

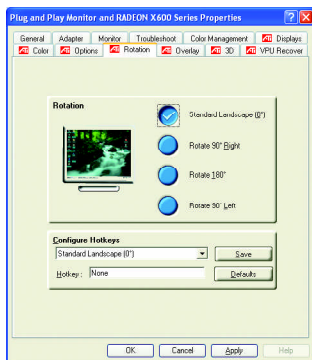


- **Version Information** provides the Catalyst version number, 2D version number and the driver build information.
- **Details button** access to the Details tab which lists the card's hardware details and driver information.
- **Re-activate all warning messages** allows you to reactivate any disabled graphics warning messages.
- **Enable ATI taskbar icon application** enables or disables the ATI taskbar icon. However, this feature must be enabled for ATI hotkey support.

- **Show ATI icon on taskbar** adds or removes the ATI icon from the taskbar.
- **Disable quick resolution feature** is accessible by left-clicking the ATI icon in the taskbar.
- **Reduce DVI frequency on high-resolution displays** Resolves display corruption or no image at high resolutions (for example 1280x1024 @75Hz) using a digital DVI display. (This setting has no effect when using a DVI-to-VGA adapter.)
- **Alternate DVI operational mode** Use this option if you are experiencing display corruption on your DVI flat panel.

Rotation:

Use the Rotation tab to rotate the image on your display up to 180 degrees. This feature is useful when using a flat panel display that can be physically rotated to different positions.

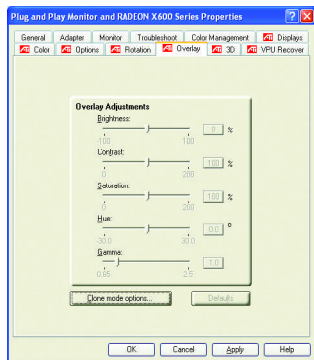


- Standard Landscape (0 degree rotation)
- Rotate 90° Right (90 degrees clockwise rotation)
- Rotate 180° (180 degrees rotation)
- Rotate 90° Left (90 degrees counter-clockwise rotation)

Overlay Properties:

The **Overlay Properties** is used to adjust the Brightness / Contrast / Saturation / Hue / Gamma settings.

Overlay properties allows for the viewing of full-motion video on your PC. However, there is only one video overlay, which is only available on the **Primary** display. The video overlay controls are automatically activated during playback of any video file type that supports overlay adjustments.

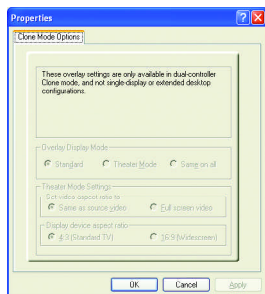


■ Overlay Adjustments

- **Brightness** allows you to adjust the brightness of the video image.
- **Contrast** allows you to adjust the contrast in the video image.
- **Saturation** allows you to adjust the vividness of the color. Sliding it all the way to the left removes all color and produces a black and white picture.
- **Hue** allows you to adjust the pureness or tint of the red, green and blue components of the color.

- **Gamma** allows you to adjust the overall intensity of the video image.

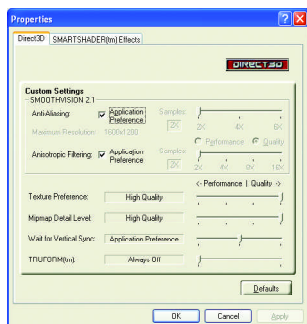
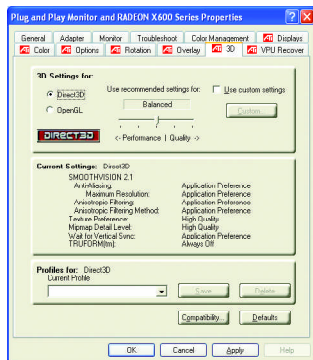
- **Defaults** button allows you to reset the Overlay settings to default values.



- **Clone mode options** button allows overlay settings are only available in dual-controller Clone mode, and not single-display or extended desktop configurations.

3D Properties:

You can adjust Direct3D and OpenGL settings from 3D properties page.



Direct3D Settings:

■ Use recommended settings for slider

Configurations the Direct3D settings of your graphics processor. Maximize overall Direct3D performance by moving the slider to the left. Enhance overall Direct3D image quality by moving the slider to the right. When you move the main settings slider, the individual custom settings sliders change to reflect the main settings slider position.

■ Use custom settings checkbox

When **Use custom settings** is checked, you can click "Custom" button to access Custom Settings. Using Custom Settings is recommended for advanced users only.

■ SMOOTHVISION 2.1

- **Anti-Aliasing checkbox** improves image quality by removing jagged edges from 3D images, resulting in smoother, more natural looking objects. Selecting **Application Preference** will result in high quality images, with negligible reduction in the application's performance.

- **Anti-Aliasing slider** can be applied using different sample patterns and sample points such as 2X, 4X, or 6X. Moving this slider to the right increases sampling to provide the most realistic 3D image.
- **Anisotropic Filtering checkbox** uses a texture filtering technique that blends multiple texture samples together. Selecting **Application Preference** will result in high quality textures, with a negligible reduction in the application's performance.
- **Anisotropic Filtering slider** By moving this slider to the right, as the number of samples taken increases, the quality of the final image increases significantly. 16X provides extremely detailed, crisp-looking images as a result of the largest number of texture samples possible.

■ Texture Preference slider

Selecting this decides whether your application should use high quality or high performance textures. Moving the slider to the right delivers the highest quality experience. Moving the slider to the left emphasizes a high performance solution while still providing good visuals.

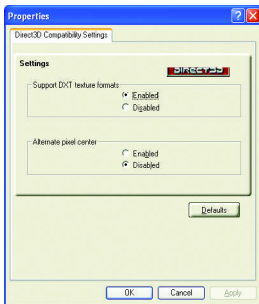
■ Mipmap Detail Level slider

This will allow you to choose the texture quality of the mipmaps the application will use. Mipmaps are a collection of different sized textures of the same image. As the user moves closer to a 3D object the image quality should increase, requiring a higher quality texture of the same image. The base mipmap is the highest quality texture, and all subsequent mipmaps are smaller sized textures of the same image. Moving the slider to the right selects a higher quality base mipmap, delivering the highest quality application experience. Moving the slider to the left selects a lower quality mipmap, delivering the highest application performance.

■ Wait for Vertical Sync

This will lower the frame rate of full screen games but reduce the image tearing that can occur with the higher frame rate. Selecting **Application Preference** allows the application to decide whether or not it should display its frames at the refresh rate of the monitor. Selecting **Always Off** allows the application to run at its highest possible frame rate, regardless of the monitor's refresh rate which is typically less than the frame rate at which the application will run.

■ **TRUFORM** makes the curved surfaces of 3D objects look smoother and more lifelike.



■ Compatibility Settings button

This button allows you to access advanced settings that can solve compatibility issues for a few specific Direct 3D applications.

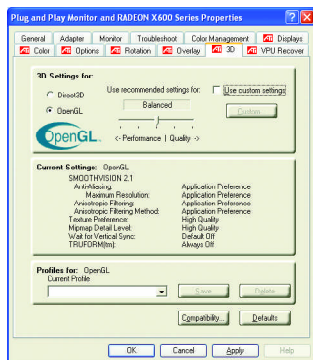
- **Support DTX texture formats** allows applications to use this kind of texture format. There are a few applications that can only support a limited number of texture formats. By selecting **Disabled**, the driver will not support DTX texture formats, thus reducing the number of texture formats supported.

- **Alternate pixel center** This may eliminate problems with some Direct3D games which display vertical and horizontal lines around textures, or text that appears incorrect. However, this setting should only be used if you are experiencing the symptoms mentioned, as it may cause problems with other games.
- **Defaults button** allows you to reset the Direct3D Compatibility Settings to default values.

OpenGL Settings:

■ Use recommended settings for slider

Configurations the OpenGL settings of your graphics processor. Maximize overall OpenGL performance by moving the slider to the left. Enhance overall OpenGL image quality by moving the slider to the right. When you move the main settings slider, the individual custom settings sliders change to reflect the main settings slider position.

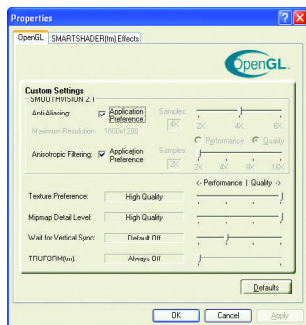


■ Use custom settings checkbox

When **Use custom settings** is checked, you can click "Custom" button to access Custom Settings. Using Custom Settings is recommended for advanced users only.

■ SMOOTHVISION 2.1

- **Anti-Aliasing checkbox** improves image quality by removing jagged edges from 3D images, resulting in smoother, more natural looking objects. Selecting **Application Preference** will result in high quality images, with negligible reduction in the application's performance.



- **Anti-Aliasing slider** can be applied using different sample patterns and sample points such as 2X, 4X, or 6X. Moving this slider to the right increases sampling to provide the most realistic 3D image.

- **Anisotropic Filtering checkbox** uses a texture filtering technique that blends multiple texture samples together. Selecting **Application Preference** will result in high quality textures, with a negligible reduction in the application's performance.

- **Anisotropic Filtering slider** By moving this slider to the right, as the number of samples taken increases, the quality of the final image increases significantly. 16X provides extremely detailed, crisp-looking images as a result of the largest number of texture samples possible.

■ Texture Preference slider

Selecting this decides whether your application should use high quality or high performance textures. Moving the slider to the right delivers the highest quality experience. Moving the slider to the left emphasizes a high performance solution while still providing good visuals.

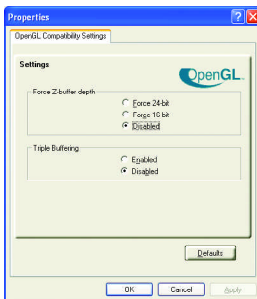
■ Mipmap Detail Level slider

This will allow you to choose the texture quality of the mipmaps the application will use. Mipmaps are a collection of different sized textures of the same image. As the user moves closer to a 3D object the image quality should increase, requiring a higher quality texture of the same image. The base mipmap is the highest quality texture, and all subsequent mipmaps are smaller sized textures of the same image. Moving the slider to the right selects a higher quality base mipmap, delivering the highest quality application experience. Moving the slider to the left selects a lower quality mipmap, delivering the highest application performance.

■ Wait for Vertical Sync

This will lower the frame rate of full screen games but reduce the image tearing that can occur with the higher frame rate. Selecting **Application Preference** allows the application to decide whether or not it should display its frames at the refresh rate of the monitor. Selecting **Always Off** allows the application to run at its highest possible frame rate, regardless of the monitor's refresh rate which is typically less than the frame rate at which the application will run.

■ **TRUFORM** makes the curved surfaces of 3D objects look smoother and more lifelike.



■ Compatibility Settings button

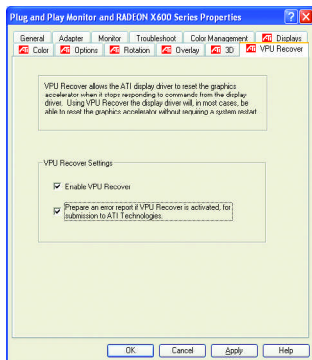
This button allows you to access advanced settings that can solve compatibility issues for a few specific OpenGL applications.

- **Force Z-buffer depth** allows you to explicitly set the Z-Buffer depth. Most applications will work best when **Disabled** is selected.
- **Triple Buffering** Enabling this feature allows rapid updates of those portions of your screen that have changed. Note that most applications will not be affected by activating this feature.

- **Defaults button** allows you to reset the OpenGL Compatibility Settings to default values.

VPU Recover Properties:

The **VPU Recover Properties** allows the ATI display driver to reset the graphics accelerator when it stops responding to commands from the display driver. Using VPU Recover the display driver will, in most cases, be able to reset the graphics accelerator without requiring a system restart.

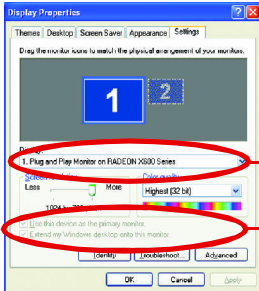


VPU Recover Settings:

- **Enable VPU Recover** to enable all VPU Recover feature.
- **Prepare an error report if VPU Recover is activated, for submission to ATI Technologies** allows VPU Recover, once it is activated, to generate an error report that you can send to ATI via email.

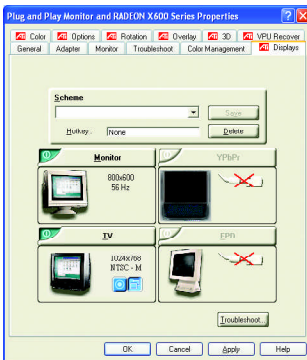
Display Properties:

If your VGA card is equipped with a S-Video connector, you can use a second output device (e.g. a TV or a computer monitor) as part of your operating desktop extending your desktop to second device or copying your desktop on the second device.



Select Display Type

Enable / Disable "Extend my windows desktop onto this monitor"



The Display tab provides the multi monitor features. Here you can enable/disable display devices and swap the assignment of **Primary** and **Secondary** displays.

Connecting your graphics card to a TV or VCR

To connect your graphics card to a TV (or VCR), use an S-Video cable. However, most TVs (and VCRs) have a Composite video input, in which case you can use the supplied S-Video-to-Composite video adapter.

1. Turn off your computer and your television (or VCR).
2. Ensure your graphics card was installed correctly.
3. Determine if your television (or VCR) has an S-Video or Composite video connection.
4. Looking at the back of your computer, locate your S-Video Out. Using an S-Video cable or the supplied adapter cable, attach one end of the cable to your graphics card and the other to your television (or VCR).
5. Turn on your television (or VCR) then your computer.

3.2. Win® 2000 Driver Installation

With Windows running on your computer, you need to install the graphics card driver to take advantage of the higher performance, resolutions, and special graphics features of the graphics card. To ensure you install the latest driver, insert the Installation CD that shipped with your graphics card.

To install the graphics card driver for Win® 2000, please insert the Installation CD. Then the AUTORUN window will show up. Click **Install Display Driver** item, and follow the wizard to install the driver.

If Windows® does not show the CD automatically, please run following steps:

1. Click the Start button on the control bar.
2. Select Run.
3. Type the following: D:\SETUP.exe
(If D is not your CD-ROM drive, substitute D with the correct drive letter.)
4. Click "OK".
5. Click on "Install Display Drivers" to begin the Installation Wizard.
6. Click "Next".
7. Click "Yes" to the license agreement.
8. Follow the Wizard's on-screen instructions to complete the installation.



Please make sure the Windows® 2000 have installed Windows® 2000 Service Pack (or later) before installing the graphics accelerator driver.

4. Troubleshooting Tips

The following troubleshooting tips may help if you experience problems. Contact your dealer or GIGABYTE for more advanced troubleshooting information.

- Check that the card is seated properly in the PCI Express x 16 slot.
- Ensure that the display cable is securely fastened to the card's display connector.
- Make sure that the monitor and computer are plugged in and receiving power.
- If necessary, disable any built-in graphics capabilities on your motherboard. For more information, consult your computer's manual or manufacturer.

(NOTE: Some manufacturers do not allow the built-in graphics to be disabled or to become the secondary display.)

- Make sure you selected the appropriate display device and graphics card when you installed the graphics driver.
- Restart your computer.
Press the F8 key on your keyboard after system starts up. When the Windows Advanced Options Menu appears, select Safe Mode and press Enter.
After getting into Safe Mode, in Device Manager check whether the driver for the graphics card is correct.
- For more assistance, use the Troubleshooting Guide located in the Windows® Help or contact your computer manufacturer.



If necessary, adjust your monitor's setting by monitor's adjust panel to make the screen looks focused, crisp, and sharp. (Please refer to the monitor's manual.)


5. Appendix

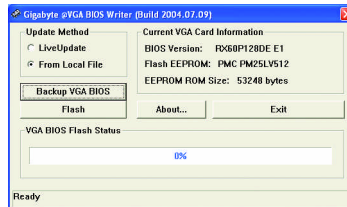
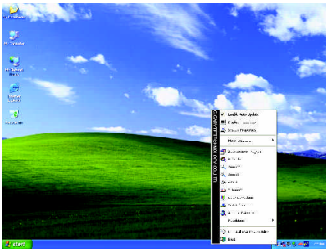
5.1. How to Reflash the BIOS

5.1.1. Reflash BIOS in MS-DOS mode

1. Extract the downloaded Zip file to your hard disk or floppy disk. This procedure assumes drive A.
2. Restart the computer in MS-DOS mode. (For Windows 2000/XP, you need a startup disk to restart the computer in MS-DOS mode.)
3. Change the command prompt to A:\>.
4. At the A:\> prompt, type [BIOS flash utility name] -p 0 [BIOS file name] (example: **atiflash -p 0 r955128d.f2**) and press **Enter**.
5. Wait until it's done, then restart your computer.

5.1.2. Reflash BIOS in Windows mode

1. After installing the display drivers, you will find a GIGABYTE  icon in the lower-right corner of the Taskbar. Right-click to select the @VGA utility.



@VGA flash BIOS utility.

2. Update BIOS through the Internet
 - a. Select the **Live Update** check box and click **Flash**. Then @VGA will automatically download the BIOS for your card from GIGABYTE @VGA server and do the update for you. (@VGA will not download/update the BIOS if it detects the current BIOS on your card is the latest one.)
3. Update BIOS NOT through the Internet
 - a. Download the BIOS ZIP file for your card from GIGABYTE website and extract it to your hard disk (or floppy disk).
 - b. Select the **From Local File** check box and then click **Flash**.
 - c. Select the BIOS file from your hard disk (or floppy disk).
 - d. Complete the update procedure following the on-screen instructions.

5.2. Resolutions and Color Depth Table (In Windows® XP)

GV-RX60P128D(DE) 2D Single Display Modes

Display Screen Resolution	Refresh Rate (Hz)	Color Depth (bpp)		
		8bpp(256 color) Standard mode	16bpp(65K color) High mode	32bpp(16.7M) True mode
640 x 480	200	✓	✓	✓
800 x 600	200	✓	✓	✓
1024 x 768	200	✓	✓	✓
1152 x 864	100	✓	✓	✓
1280 x 768	85	✓	✓	✓
1280 x 960	160	✓	✓	✓
1280 x 1024	120	✓	✓	✓
1600 x 1200	100	✓	✓	✓
1792 x 1344	85	✓	✓	✓
1800 x 1440	70	✓	✓	✓
1856 x 1392	75	✓	✓	✓
1920 x 1080	75	✓	✓	✓
1920 x 1200	85	✓	✓	✓
1920 x 1440	75	✓	✓	✓
2048 x 1536	66	✓	✓	✓

