

Declaration of Conformity

We, Manufacturer/Importer
(full address)

G.B.T. Technology Trading GmbH
Ausschläger Weg 41, 1F, 20537 Hamburg, Germany

declare that the product
(description of the apparatus, system, installation to which it refers)

VGA Card
GV-R96X256V

is in conformity with

(reference to the specification under which conformity is declared)
in accordance with 89/336 EEC-EMC Directive

<input type="checkbox"/> EN 55011	Limits and methods of measurement of radio disturbance characteristics of industrial, scientific and medical (ISM) high frequency equipment	<input type="checkbox"/> EN 61000-3-2* <input checked="" type="checkbox"/> EN 60555-2	Disturbances in supply systems cause by household appliances and similar electrical equipment "Harmonics"
<input type="checkbox"/> EN 55013	Limits and methods of measurement of radio disturbance characteristics of broadcast receivers and associated equipment	<input type="checkbox"/> EN 61000-3-3* <input checked="" type="checkbox"/> EN 60555-3	Disturbances in supply systems cause by household appliances and similar electrical equipment "Voltage fluctuations"
<input type="checkbox"/> EN 55014	Limits and methods of measurement of radio disturbance characteristics of household electrical appliances, portable tools and similar electrical apparatus	<input checked="" type="checkbox"/> EN 50081-1 <input checked="" type="checkbox"/> EN 50082-1	Generic emission standard Part 1: Residual commercial and light industry Generic immunity standard Part 1: Residual commercial and light industry
<input type="checkbox"/> EN 55015	Limits and methods of measurement of radio disturbance characteristics of fluorescent lamps and luminaries	<input type="checkbox"/> EN 55081-2	Generic emission standard Part 2: Industrial environment
<input type="checkbox"/> EN 55020	Immunity from radio interference of broadcast receivers and associated equipment	<input type="checkbox"/> EN 55082-2	Generic emission standard Part 2: Industrial environment
<input checked="" type="checkbox"/> EN 55022	Limits and methods of measurement of radio disturbance characteristics of information technology equipment	<input type="checkbox"/> ENV 55104	Immunity requirements for household appliances tools and similar apparatus
<input type="checkbox"/> DIN VDE 0855 <input type="checkbox"/> part 10 <input type="checkbox"/> part 12	Cabled distribution systems; Equipment for receiving and/or distribution from sound and television signals	<input type="checkbox"/> EN 50091-2	EMC requirements for uninterruptible power systems (UPS)

☒ CE marking



(EC conformity marking)

**The manufacturer also declares the conformity of above mentioned product
with the actual required safety standards in accordance with LVD 73/23 EEC**

<input type="checkbox"/> EN 60065	Safety requirements for mains operated electronic and related apparatus for household and similar general use	<input type="checkbox"/> EN 60950	Safety for information technology equipment including electrical business equipment
<input type="checkbox"/> EN 60335	Safety of household and similar electrical appliances	<input type="checkbox"/> EN 50091-1	General and Safety requirements for uninterruptible power systems (UPS)

Manufacturer/Importer

(Stamp)

Date : Jan. 20, 2004

Signature:

Name:

Timmy Huang

Timmy Huang

DECLARATION OF CONFORMITY

Per FCC Part 2 Section 2.1077(a)



Responsible Party Name: G.B.T. INC. (U.S.A.)

Address: 17358 Railroad Street

City of Industry, CA 91748

Phone/Fax No: (818) 854-9338/ (818) 854-9339

hereby declares that the product

Product Name: VGA Card

Model Number: GV-R96X256V

Conforms to the following specifications:

FCC Part 15, Subpart B, Section 15.107(a) and Section 15.109
(a), Class B Digital Device

Supplementary Information:

This device complies with part 15 of the FCC Rules. Operation is subject to the following two conditions: (1) This device may not cause harmful and (2) this device must accept any interference received, including that may cause undesired operation.

Representative Person's Name: ERIC LU

Signature: Eric Lu

Date: Jan. 20, 2004

GV-R96X256V

Radeon 9600 XT Graphics Accelerator

USER'S MANUAL

Rev. 101

12MD-R96X256V-101

User's Manual

Copyright

Copyright by **GIGA-BYTE TECHNOLOGY CO., LTD. ("GBT")** No part of this manual may be reproduced or transmitted in any form without the expressed, written permission of GBT.

Trademarks

Third-party brands and names are the property of their respective owners.

Notice

Due to rapid change in technology, some of the specifications might be out of date before publication of this booklet.

The author assumes no responsibility for any errors or omissions which may appear in this document nor does it make a commitment to update the information contained herein. Please do not remove any labels on VGA card, this may void the warranty of this VGA card.

This product incorporates copyright protection technology that is protected by method claims of certain U.S. patents and other intellectual property rights owned by Macrovision Corporation and other rights owners. Use of this copyright protection technology must be authorized by Macrovision Corporation, and is intended for home and other limited viewing uses only unless otherwise authorized by Macrovision Corporation. Reverse engineering or disassembly is prohibited.

Table of Contents

1. INTRODUCTION	4
1.1. PREFACE	4
1.2. KEY FEATURES	4
2. HARDWARE INSTALLATION	5
2.1. UNPACKING	5
2.2. BOARD LAYOUT	6
2.3. HARDWARE INSTALLATION	7
3. SOFTWARE INSTALLATION	9
3.1. Win® XP driver and utilities installation	9
3.1.1. Operating system requirement	9
3.1.2. DirectX Installation	10
3.1.3. Driver Installation	12
3.1.4. Utilities on driver CD	15
3.1.5. Taskbar Icon	18
3.1.6. Display Properties pages	22
3.2. Win® 98/98SE / Win® 2000 / Win® ME driver installation	31
3.3. BIOS FLASH UTILITY	31
4. Troubleshooting Tips	32
5. Appendix	33
5.1. How to reflash the BIOS	33
5.2. Resolutions and Color Depth Table (In Windows® XP)	34

1. INTRODUCTION

1.1. PREFACE

GV-R96X256V features 4-pipeline architecture for twice the rendering power, 128MB of memory to accelerate latest 3D games and new SMARTSHADER™ 2.1 technology supporting DirectX® 9.0 and the latest OpenGL® functionality to give developers the freedom to create more complicated and realistic visual effects than ever before. GV-R96X256V supports the new AGP 8X standard, which allows large volumes of texture and vertex data to be transferred faster from system memory to the chip.

1.2. KEY FEATURES

- Powered by RADEON™ 9600 XT Visual Processing Unit (VPU)
- Supports DirectX® 9.0
- Supports the new AGP 8X standard
- 4-pixel pipeline architecture
- 128-bit memory interface
- 256MB DDR memory accelerates the latest 3D games
- Supports pixel shaders to accelerate video
- Supports CRT, DVI-I and VIVO connectors

2. HARDWARE INSTALLATION

2.1. UNPACKING

The GV-R96X256V package contains the following:

- The GV-R96X256V graphics accelerator
- This user's manual
- The GV-R96X256V driver CD x 1
- PowerDVD CD
- Game CD
- S-video and AV in/output cable x 1
- DVI-I to D-Sub connector



WARNING!

Expansion cards contain very delicate Integrated Circuit (IC) chips. To protect them against damage from static electricity, you should follow some precautions whenever you work on your computer.

1. Turn off your computer and unplug power supply.
2. Use a grounded wrist strap before handling computer components. If you do not have one, touch both of your hands to a safely grounded object or to a metal object, such as the power supply case.
3. Place components on a grounded antistatic pad or on the bag that came with the components whenever the components are separated from the system.

The card contains sensitive electric components, which can be easily damaged by static electricity, so the card should be left in its original packing until it is installed.

Unpacking and installation should be done on a grounded anti-static mat. The operator should be wearing an anti-static wristband, grounded at the same point as the anti-static mat.

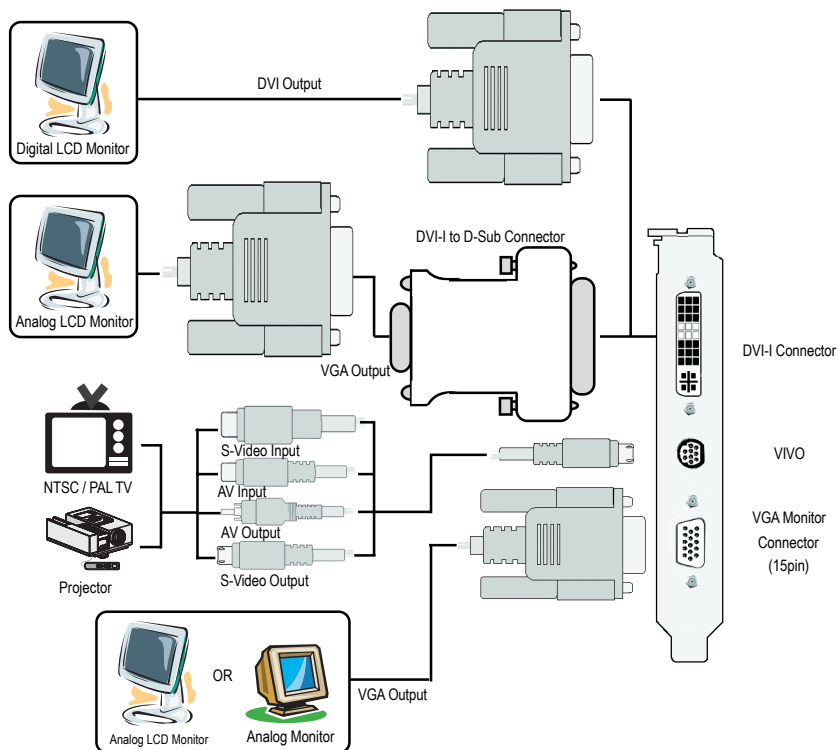
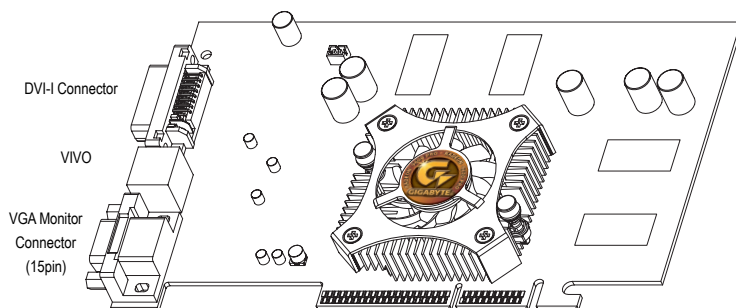
Inspect the card carton for obvious damage. Shipping and handling may cause damage to your card. Be sure there are no shipping and handling damages on the card before proceeding.

⚡ **DO NOT APPLY POWER TO YOUR SYSTEM IF IT HAS BEEN DAMAGED ON THE CARD.**

⚡ **In order to ensure your graphics card working correctly, please use official Gigabyte BIOS only. Use none official gigabyte BIOS might cause problem on the graphics card.**

2.2. BOARD LAYOUT

GV-R96X256V



2.3. HARDWARE INSTALLATION

Installing Your Graphics card.

Now that you have prepared your computer, you are ready to install your graphics accelerator card.

To install your graphics accelerator card:

1. Power off the computer and monitor, then disconnect the display cable from the back of your computer.

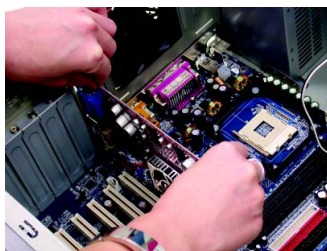


2. Remove the computer cover. If necessary, consult your computer's manual for help in removing the cover.

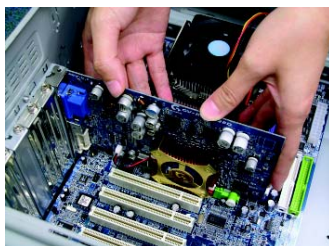


3. Remove any existing graphics card from your computer.

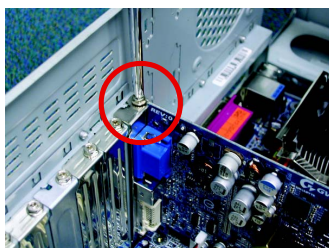
Or, if your computer has any on-board graphics capability, you may need to disable it on the motherboard. For more information, see your computer documentation.



4. Locate the AGP slot. If necessary, remove the metal cover from this slot; then align your graphics card with the AGP slot, and press it in firmly until the card is fully seated.



5. Replace the screw to fasten the card in place, and replace the computer cover.



6. Plug the display cable into your card; then turn on the computer and monitor. If your graphics card came with a DVI connector, you can connect a flat panel display to the appropriate connector, as shown below...



To Flat Panel Display



To VGA Monitor



9 Pin (VIVO)

You are now ready to proceed with the installation of the graphics card driver. For detailed instructions, select your operating system from the list below.

3. SOFTWARE INSTALLATION

In this manual, we assume that your CD-ROM Drive letter to be Drive D:

The installation of Win® 98/98SE / Win® 2000 / Win® ME / Win® XP drivers is very simple. When you insert the driver CD into your CD-ROM drive, you can see the AUTORUN window (if it does not show up, run "D:\setup.exe"). Then you can follow the guides to setup your graphics card driver. (Please follow the subsection 3.1.3 "Driver installation" to install the driver for your graphics accelerator.)

3.1. WIN® XP DRIVER AND UTILITIES INSTALLATION

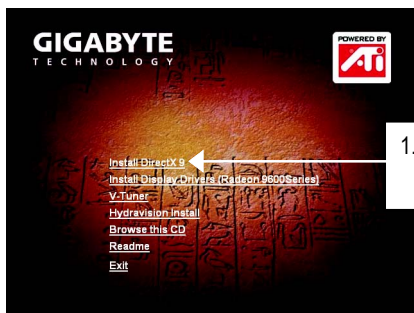
3.1.1. Operating system requirement

- When loading the graphics card drivers for the system, please make sure your system has installed DirectX 9 or later version.
- If you install the graphics card drivers for the motherboard, which consist of SIS, ALI or VIA chipsets, please install the appropriate driver program for that motherboard. Or please contact your motherboard nearest dealer for motherboard driver.

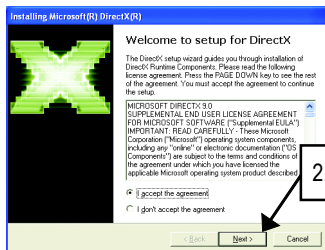
3.1.2. DirectX Installation

Install Microsoft DirectX 9(or later version) to enable 3D hardware acceleration support for Windows® 98 / 98SE / Windows® 2000 / Windows® ME or Windows® XP to achieve better 3D performance.

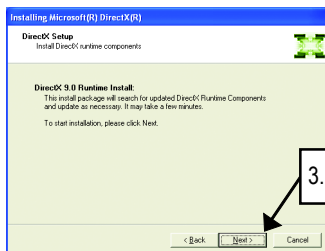
- *Note: For software MPEG support in Windows® 98/ 98SE/ Windows® 2000/ Windows® ME or Windows® XP , you must install DirectX 9(or later version) first.



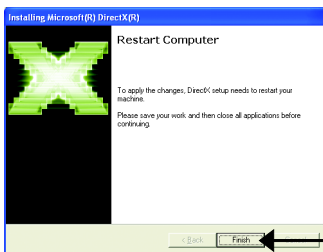
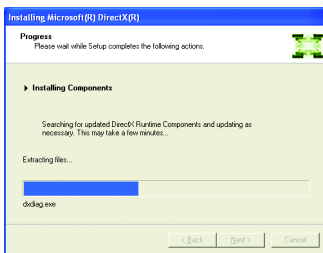
1. Install DirectX Driver:
Click "Install DirectX 9" Item.



2.Click "Next" icon.



3.Click "Next" icon.



4.Click "Finish" item.

Then the DirectX 9 installation is completed.

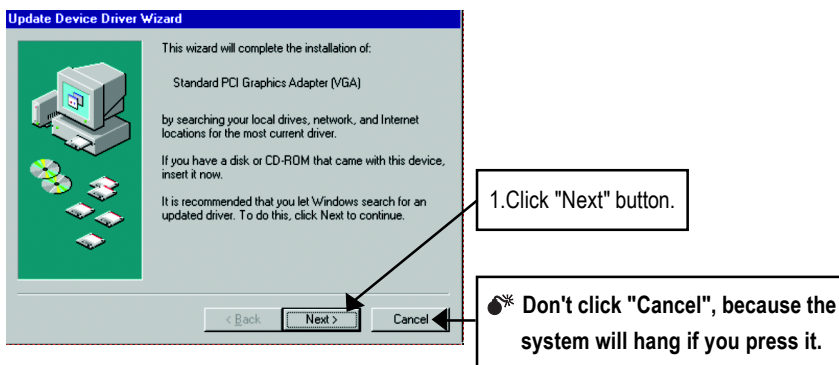
3.1.3. Driver Installation

The following is the step-by-step installation guide.

Step 1: New Hardware Found

After graphics card is inserted into your computer at the first time, the windows will automatically detect a new hardware in the system and pop out a "New Hardware Found" message. Please select "Do not install a driver" and press OK.

Step 2: Update Device Driver Wizard: Standard PCI Graphics Adapter(VGA)

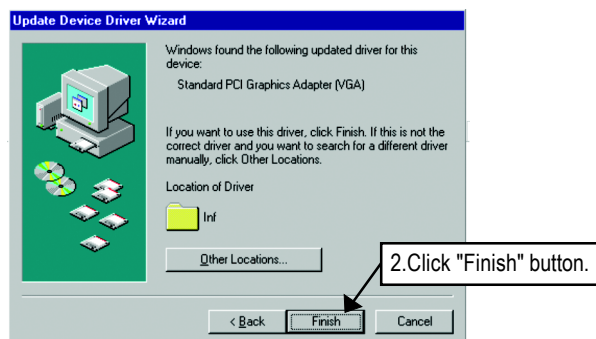


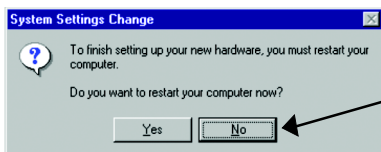
Step 3: Update Device Driver Wizard: Finish

At this time, system will ask for your Windows CD in order to complete the VGA driver installation.

If you don't have the CD, you can press C:\Windows\System directory.

Step 4: System Setting Change



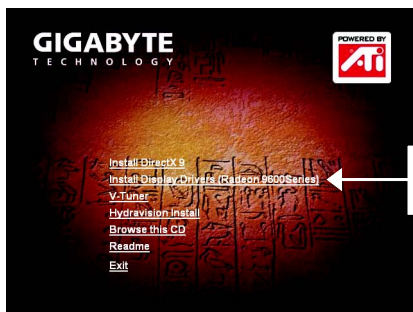


3. Click "No" button.

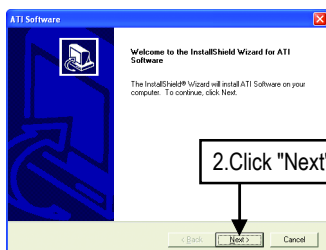
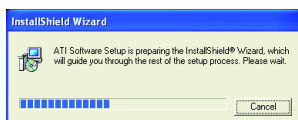
After the system has finished loading, insert the driver CD disk into your CD-ROM, and then you can see the AUTORUN window. If it does not show up, please run "D:\setup.exe".

Step 5: Driver Setup

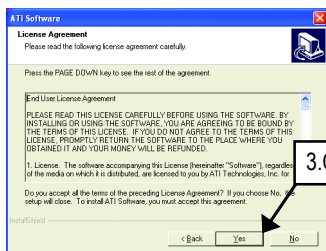
(Pictures below are shown in Windows XP)



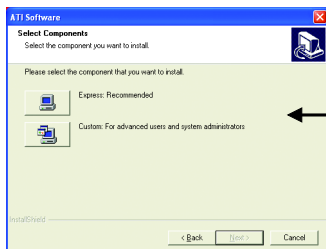
1. Click "Install Display Drivers (Radeon 9600 Series)" item.



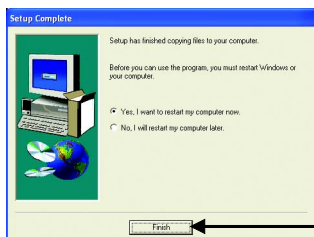
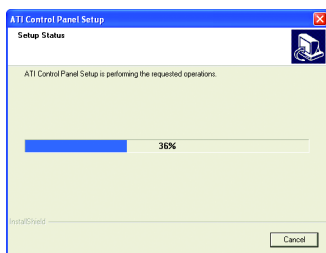
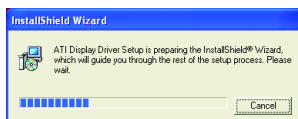
2. Click "Next".



3. Click "Yes".



4. Click "Express" or "Custom" icon.

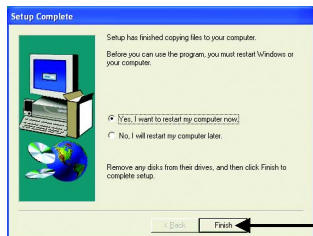
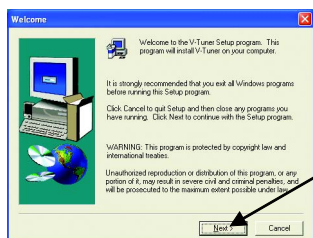


5. Click "Finish" to restart computer.

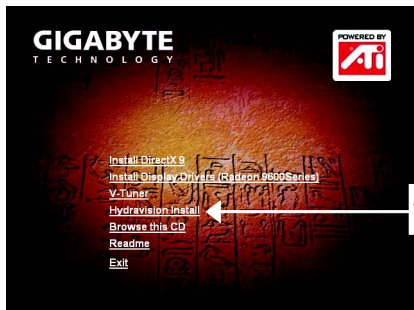
3.1.4. Utilities on driver CD

The utilities include Display Driver and V-Tuner utilities. Please follow the steps.

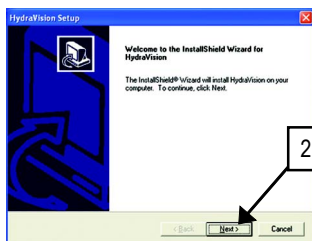
- Install V-Tuner :



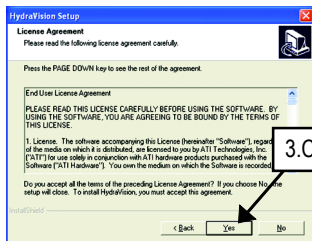
- Install Hydravision :



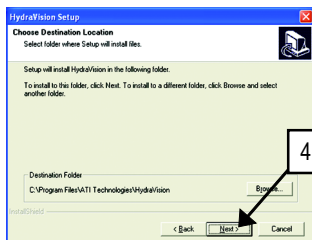
1. Click "Hydravision Install" item.



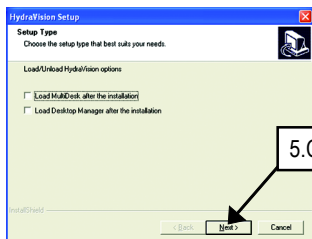
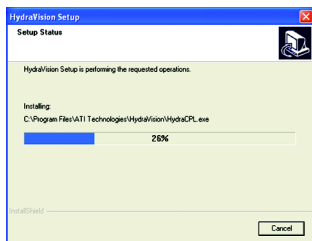
2. Click "Next".



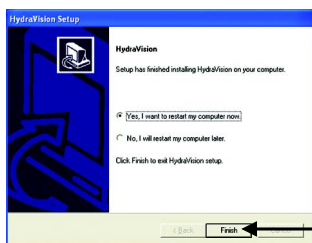
3. Click "Yes".



4. Click "Next".




5. Click "Next".



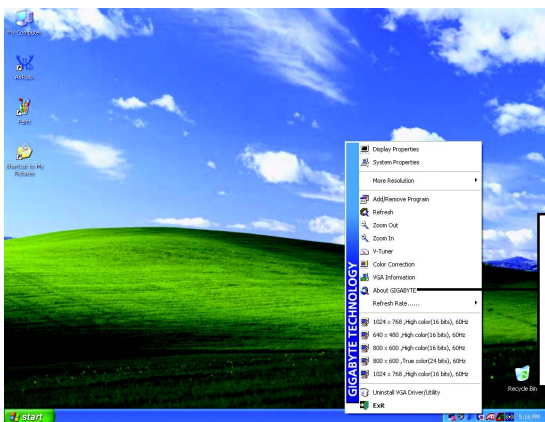
6. Click "Finish" to restart computer.

3.1.5. Taskbar Icon

After installation of the display drivers, you will find an GBT icon  on the taskbar's status area. Right-clicking this icon opens the GBT control panel, showing a menu composed of shortcuts of the graphics card's enhanced and other functions. You may click the "Display Properties" item, and then click Settings. Click "Advanced" after clicking Settings. Click the appropriate tab to change your display settings.



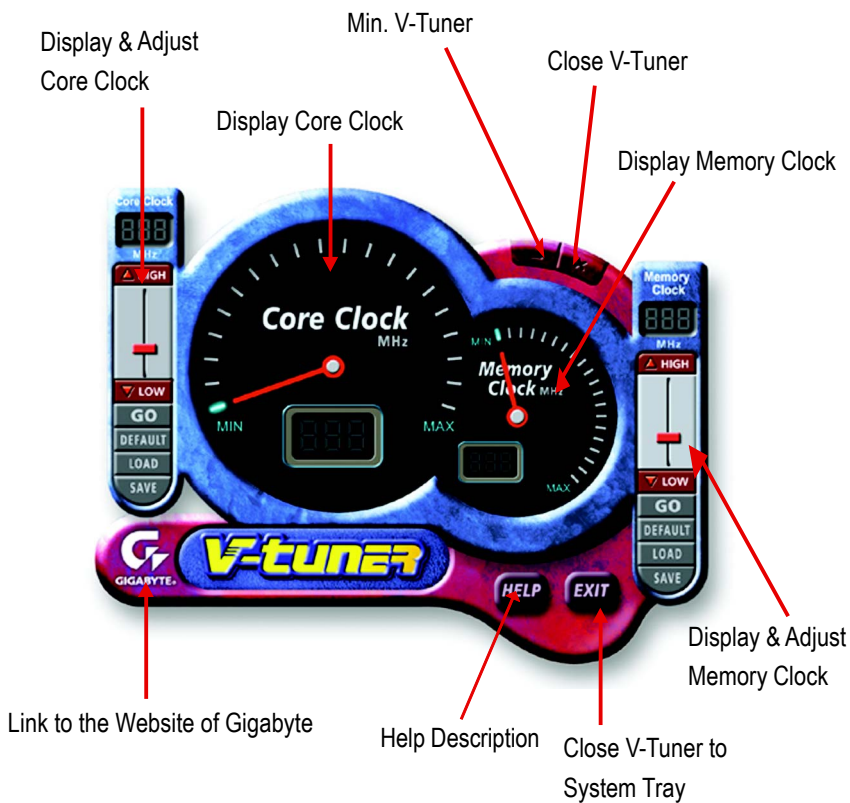
Right click the icon.



You can link to GBT website for updated information about the graphics card, latest drivers, and other information.

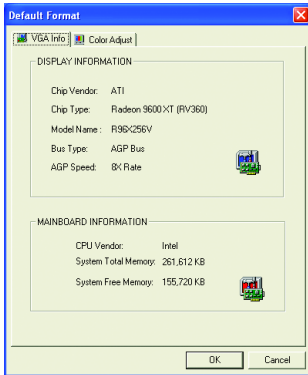
V-Tuner (Overclock Utility)

V-Tuner lets you adjust the working frequency of the graphic engine and video memory (Core Clock and Memory Clock)



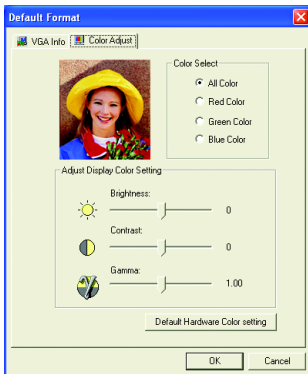
VGA Information


VGA Info lists the relevant information about your card.

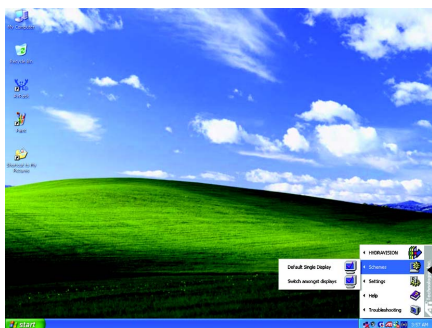


Color Adjust

Color Adjust allows you to make color adjustments, such as brightness, contrast and gamma values for each or all of RGB colors.



After installation of the display drivers, you will find an ATI icon  on the taskbar's status area. Clicking this icon open the ATI control panel.



2.Using Single Display

HYDRAVISION™

HYDRAVISION™ and the Desktop Manager are activated whenever Windows® starts. Installing HYDRAVISION™ adds menu options to the ATI Icon.

Click on the ATI icon to access the application's features and help, or to unload the HYDRAVISION™ Desktop Manager.



3.Hydravision

HYDRAVISION™ is primarily software designed for multiple monitor settings. GV-R96X128D graphic cards that have more than one display output can benefit fully from this software. A GV-R96X128D with only one display output can still take advantage of the many features of HYDRAVISION™.

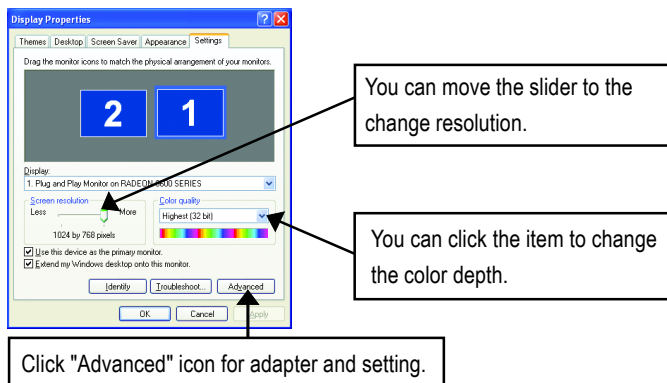
HYDRAVISION™ installation enables the Desktop Manager and creates a Windows® program group for HYDRAVISION™ display management software.

3.1.6. Display Properties pages

The screen shows the information of display adapter, color, the range of display area and the refresh rate.

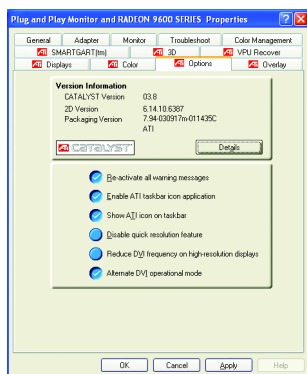
Settings (Resolutions and Color depth for windows)

The Setting properties page allows you to adjust the Direct 3D settings.



Click "Advanced", into details settings:

Options Properties

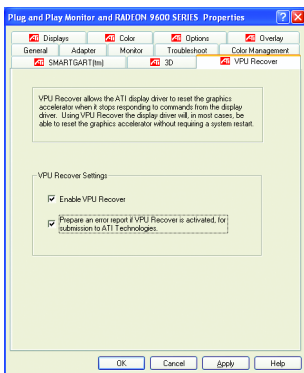


- **Version Information** provides the Catalyst version number, 2D version number and the driver build information.
- **Details button** access to the Details tab which lists the card's hardware details and driver information.
- **Re-activate all warning messages** allows you to reactivate any disabled graphics warning messages.
- **Enable ATI taskbar icon application** enables or disables the ATI taskbar icon. However, this feature must be enabled for ATI hotkey support.

- **Show ATI icon on taskbar** adds or removes the ATI icon from the taskbar.
- **Disable quick resolution feature** is accessible by left-clicking the ATI icon in the taskbar.
- **Reduce DVI frequency on high-resolution displays** enables or disables to reduce the DVI frequency when using high-resolution.
- **Alternate DVI operational mode** enables or disables alternate DVI operational mode.

VPU Recover Properties:

The **VPU Recover Properties** allows the ATI display driver to reset the graphics accelerator when it stops responding to commands from the display driver. Using VPU Recover the display driver will, in most cases, be able to reset the graphics accelerator without requiring a system restart.

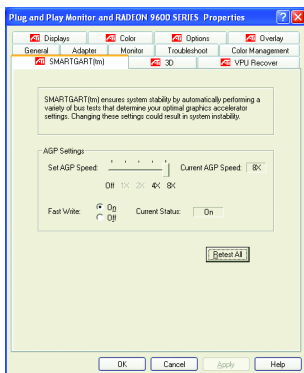


VPU Recover Settings:

- Enable VPU Recover
- Prepare an error report if VPU Recover is activated, for submission to ATI Technologies.

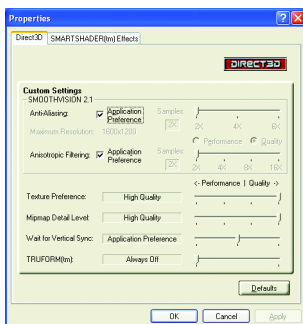
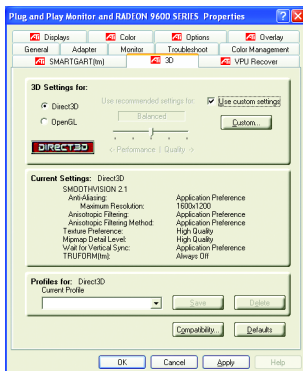
SMARTGART™ Properties:

The **SMARTGART™ Properties** ensures system stability by automatically performing a variety of bus tests that determine your optimal graphics accelerator settings. Changing these settings might result in system instability.



3D Properties:

You can adjust Direct3D and OpenGL settings from 3D properties page.



Direct3D Settings:

■ Use custom settings checkbox

When **Use custom settings** is checked, you can click "**Custom**" button to access Custom Settings. Using Custom Settings is recommended for advanced users only.

■ SMOOTHVISION 2.1

- **Anti-Aliasing checkbox** improves image quality by removing jagged edges from 3D images, resulting in smoother, more natural looking objects. Selecting **Application Preference** will result in high quality images, with negligible reduction in the application's performance.
- **Anti-Aliasing slider** can be applied using different sample patterns and sample points such as 2X, 4X, or 6X. Moving this slider to the right increases sampling to provide the most realistic 3D image.

- **Anisotropic Filtering checkbox** uses a texture filtering technique that blends multiple texture samples together. Selecting **Application Preference** will result in high quality textures, with a negligible reduction in the application's performance.

- **Anisotropic Filtering slider** By moving this slider to the right, as the number of samples taken increases, the quality of the final image increases significantly. 16X provides extremely detailed, crisp-looking images as a result of the largest number of texture samples possible.

■ Texture Preference slider

Selecting this decides whether your application should use high quality or high performance textures. Moving the slider to the right delivers the highest quality experience. Moving the slider to the left emphasizes a high performance solution while still providing good visuals.

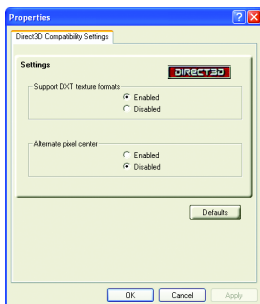
■ Mipmap Detail Level slider

This will allow you to choose the texture quality of the mipmaps the application will use. Mipmaps are a collection of different sized textures of the same image. As the user moves closer to a 3D object the image quality should increase, requiring a higher quality texture of the same image. The base mipmap is the highest quality texture, and all subsequent mipmaps are smaller sized textures of the same image. Moving the slider to the right selects a higher quality base mipmap, delivering the highest quality application experience. Moving the slider to the left selects a lower quality mipmap, delivering the highest application performance.

■ Wait for Vertical Sync

This will lower the frame rate of full screen games but reduce the image tearing that can occur with the higher frame rate. Selecting **Application Preference** allows the application to decide whether or not it should display its frames at the refresh rate of the monitor. Selecting **Always Off** allows the application to run at its highest possible frame rate, regardless of the monitor's refresh rate which is typically less than the frame rate at which the application will run.

■ TRUFORM makes the curved surfaces of 3D objects look smoother and more lifelike.



■ Compatibility Settings button

This button allows you to access advanced settings that can solve compatibility issues for a few specific Direct 3D applications.

- **Support DTX texture formats** allows applications to use this kind of texture format. There are a few applications that can only support a limited number of texture formats. By selecting **Disabled**, the driver will not support DTX texture formats, thus reducing the number of texture formats supported.

- **Alternate pixel center** This may eliminate problems with some Direct3D games which display vertical and horizontal lines around textures, or text that appears incorrect. However, this setting should only be used if you are experiencing the symptoms mentioned, as it may cause problems with other games.

- **Defaults button** allows you to reset the Direct3D Compatibility Settings to default values.

■ Current Settings provides the crueent Direct3D settings.

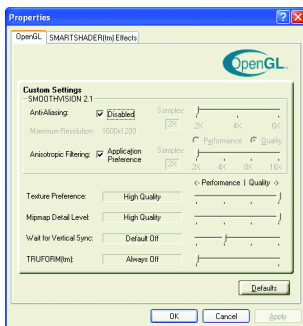
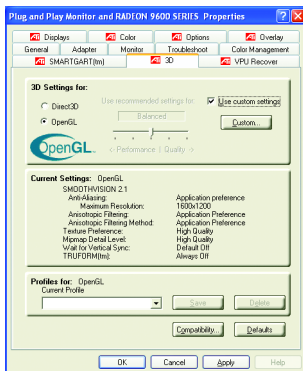
■ Defaults button

This button allows you to reset the Direct3D Settings to default values.

OpenGL Settings:

■ Use custom settings checkbox

When **Use custom settings** is checked, you can click "**Custom**" button to access Custom Settings. Using Custom Settings is recommended for advanced users only.



■ Texture Preference slider

Selecting this decides whether your application should use high quality or high performance textures. Moving the slider to the right delivers the highest quality experience. Moving the slider to the left emphasizes a high performance solution while still providing good visuals.

■ SMOOTHVISION 2.1

- **Anti-Aliasing checkbox** improves image quality by removing jagged edges from 3D images, resulting in smoother, more natural looking objects. Selecting **Application Preference** will result in high quality images, with negligible reduction in the application's performance.
- **Anti-Aliasing slider** can be applied using different sample patterns and sample points such as 2X, 4X, or 6X. Moving this slider to the right increases sampling to provide the most realistic 3D image.
- **Anisotropic Filtering checkbox** uses a texture filtering technique that blends multiple texture samples together. Selecting **Application Preference** will result in high quality textures, with a negligible reduction in the application's performance.
- **Anisotropic Filtering slider** By moving this slider to the right, as the number of samples taken increases, the quality of the final image increases significantly. 16X provides extremely detailed, crisp-looking images as a result of the largest number of texture samples possible.

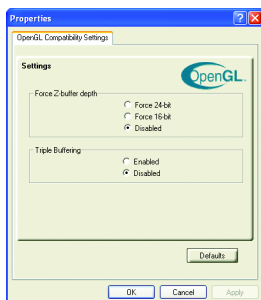
■ Mipmap Detail Level slider

This will allow you to choose the texture quality of the mipmaps the application will use. Mipmaps are a collection of different sized textures of the same image. As the user moves closer to a 3D object the image quality should increase, requiring a higher quality texture of the same image. The base mipmap is the highest quality texture, and all subsequent mipmaps are smaller sized textures of the same image. Moving the slider to the right selects a higher quality base mipmap, delivering the highest quality application experience. Moving the slider to the left selects a lower quality mipmap, delivering the highest application performance.

■ Wait for Vertical Sync

This will lower the frame rate of full screen games but reduce the image tearing that can occur with the higher frame rate. Selecting **Application Preference** allows the application to decide whether or not it should display its frames at the refresh rate of the monitor. Selecting **Always Off** allows the application to run at its highest possible frame rate, regardless of the monitor's refresh rate which is typically less than the frame rate at which the application will run.

■ TRUFORM makes the curved surfaces of 3D objects look smoother and more lifelike.



■ Compatibility Settings button

This button allows you to access advanced settings that can solve compatibility issues for a few specific OpenGL applications.

- **Force Z-buffer depth** allows you to explicitly set the Z-Buffer depth. Most applications will work best when **Disabled** is selected.
- **Triple Buffering** Enabling this feature allows rapid updates of those portions of your screen that have changed. Note that most applications will not be affected by activating this feature.

- **Defaults button** allows you to reset the OpenGL Compatibility Settings to default values.

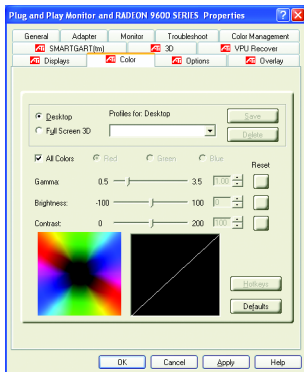
■ Current Settings provides the current OpenGL settings.

■ Defaults button

This button allows you to reset the OpenGL Settings to default values.

Color Properties:

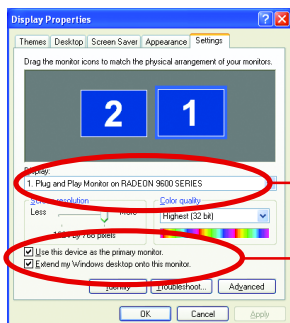
The Color Properties is used to adjust the color settings. It also allows gamma control for video playing of the Video Overlay. The color settings affect all display devices mapped to the view. You can change red, green, and blue display colors. Set Desktop and Video Overlay brightness (gamma) levels can also be changed.



- **Desktop** increases or decreases the color brightness of your desktop. The higher the gamma value, the higher the brightness and contrast of your display.
- **All Colors checkbox** adjust the RGB individually or adjust all three colors at the same time.
- **Gamma/Brightness/Contrast** adjust the color by moving the slider with your mouse, to increase or decrease the color gamma/brightness/contrast of Direct 3D and OpenGL games played in fullscreen mode. (NOTE: Game Gamma is NOT supported in Windows NT4.0)
- **Default** resets the desktop brightness and color settings to the default values.

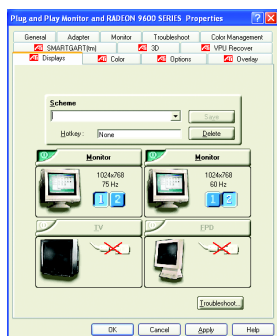
Display Properties:

If your VGA card is equipped with a S-Video connector, you can use a second output device (e.g. a TV or a computer monitor) as part of your operating desktop extending your desktop to second device or copying your desktop on the second device.



Select Display Type

Enable / Disable "Extend my windows desktop onto this monitor"



The Display tab provides the multi monitor features. Here you can enable/disable display devices and swap the assignment of **Primary** and **Secondary** displays.

Connecting your graphics card to a TV or VCR

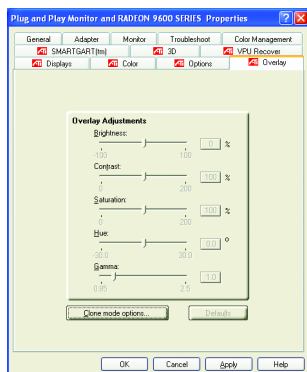
To connect your graphics card to a TV (or VCR), use an S-Video cable. However, most TVs (and VCRs) have a Composite video input, in which case you can use the supplied S-Video-to-Composite video adapter.

1. Turn off your computer and your television (or VCR).
2. Ensure your graphics card was installed correctly. (For information about placing the card in your computer and installing the enhanced graphics driver, see the user's manual.)
3. Determine if your television (or VCR) has an S-Video or Composite video connection.
4. Looking at the back of your computer, locate your S-Video Out. Using an S-Video cable or the supplied adapter cable, attach one end of the cable to your graphics card and the other to your television (or VCR).
5. Turn on your television (or VCR) then your computer.

Overlay Properties:

The Overlay Properties is used to adjust the Brightness / Contrast / Saturation / Hue / Gamma settings.

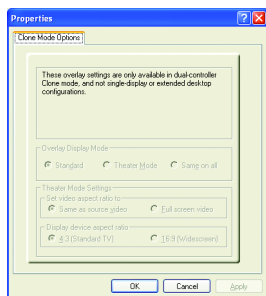
Overlay properties allows for the viewing of full-motion video on your PC. However, there is only one video overlay, which is only available on the **Primary** display. The video overlay controls are automatically activated during playback of any video file type that supports overlay adjustments.



■ Overlay Adjustments

- **Brightness** allows you to adjust the brightness of the video image.
- **Contrast** allows you to adjust the contrast in the video image.
- **Saturation** allows you to adjust the vividness of the color. Sliding it all the way to the left removes all color and produces a black and white picture.
- **Hue** allows you to adjust the pureness or tint of the red, green and blue components of the color.
- **Gamma** allows you to adjust the overall intensity of the video image.

■ **Defaults button** allows you to reset the Overlay settings to default values.



■ **Clone mode options button** allows overlay settings are only available in dual-controller Clone mode, and not single-display or extended desktop configurations.

3.2. WIN® 98/98SE / WIN® 2000 / WIN® ME DRIVER INSTALLATION

Please make sure the Windows have installed Windows Service Pack version 2 (or later) before installing the graphics accelerator driver.

With Windows running on your computer, you need to install the graphics card driver to take advantage of the higher performance, resolutions, and special graphics features of the graphics card. To ensure you install the latest driver, insert the Installation CD that shipped with your graphics card.

To install the graphics card driver for Win® 98/98SE / Win® 2000 / Win® ME, please insert the Installation CD. Then the AUTORUN window will show up. Click **Install Display Driver** item, and follow the wizard to install the driver.

If Windows® does not show the CD automatically, please run following steps:

1. Click the Start button on the control bar.
2. Select Run.
3. Type the following: D:\SETUP.exe
(If D is not your CD-ROM drive, substitute D with the correct drive letter.)
4. Click "OK".
5. Click on "Install Display Drivers" to begin the Installation Wizard.
6. Click "Next".
7. Click "Yes" to the license agreement.
8. Follow the Wizard's on-screen instructions to complete the installation.

3.3. BIOS FLASH UTILITY

BIOS update procedure:

- Note: Please download the newest BIOS from our website (www.gigabyte.com.tw) or contact your local dealer for the file.
- If you want to realize the BIOS flash information, please refer to detail on subsection 5.1. "How to reflash the BIOS".

4. TROUBLESHOOTING TIPS

The following troubleshooting tips may help if you experience problems. Contact your dealer or GBT for more advanced troubleshooting information.

- Check that the card is seated properly in the AGP slot.
- Ensure that the display cable is securely fastened to the card's display connector.
- Make sure that the monitor and computer are plugged in and receiving power.
- If necessary, disable any built-in graphics capabilities on your motherboard. For more information, consult your computer's manual or manufacturer.

(NOTE: Some manufacturers do not allow the built-in graphics to be disabled or to become the secondary display.)

- Make sure you selected the appropriate display device and graphics card when you installed the graphics driver.
- If you have problems during bootup, start your computer in Safe Mode. In Windows® 98 SE and Windows® Me, press and hold the CTRL key until the Microsoft® Windows® Startup Menu appears on the screen. Then select the number for Safe Mode, and press Enter. (You can also use F8 to bring up the Microsoft Windows® Startup Menu.) In Safe Mode, bring up the Device Manager and check for duplicate display adapter and monitor entries if you are only using one graphics card.
- For more assistance, use the Troubleshooting Guide located in the Windows® Help or contact your computer manufacturer.



If necessary, adjust your monitor's setting by monitor's adjust panel to make the screen looks focused, crisp, and sharp. (Please refer to the monitor's manual.)

5. APPENDIX

5.1. How to reflash the BIOS

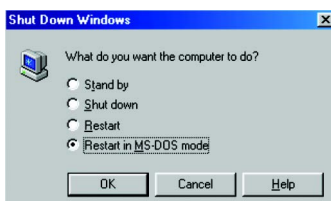


We use GV-AR64SH VGA card and Atiflash BIOS flash utility as example.

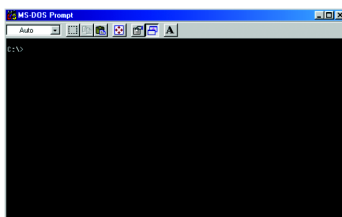
How to reflash the BIOS for your graphics card?

1. Extract the Zip file to the drive C: or A:
2. Restart your PC in MS-DOS mode

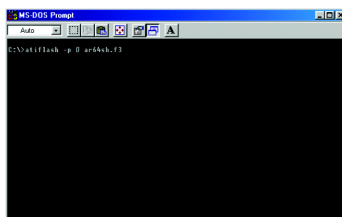
(This function only for Windows 98/98SE, If your OS is Windows 2000 / Windows Me / Windows XP, please use the bootable disk to MS-DOS mode)



3. Change the command path to the file location C:\> or A:\>



4. Reflash BIOS command as below : C:\> atiflash -p 0 <filename>



5. Reboot your PC when it's done.

5.2. Resolutions and Color Depth Table (In Windows® XP)

GV-R96X256V 2D Single Display Modes

Display	Refresh	Color Depth (bpp)		
Screen	Rate	8bpp(256 color)	16bpp(65K color)	32bpp(16.7M)
Resolution	(Hz)	Standard mode	High mode	True mode
640 x 480	60	✓	✓	✓
	72	✓	✓	✓
	75	✓	✓	✓
	85	✓	✓	✓
	90	✓	✓	✓
	100	✓	✓	✓
	120	✓	✓	✓
	160	✓	✓	✓
	200	✓	✓	✓
800 x 600	47	✓ (interlaced)	✓ (interlaced)	✓ (interlaced)
	56	✓	✓	✓
	60	✓	✓	✓
	70	✓	✓	✓
	72	✓	✓	✓
	75	✓	✓	✓
	85	✓	✓	✓
	90	✓	✓	✓
	100	✓	✓	✓
	120	✓	✓	✓
	160	✓	✓	✓
	200	✓	✓	✓
1024 x 768	43	✓ (interlaced)	✓ (interlaced)	✓ (interlaced)
	60	✓	✓	✓
	70	✓	✓	✓
	72	✓	✓	✓
	75	✓	✓	✓
	85	✓	✓	✓
	90	✓	✓	✓
	100	✓	✓	✓
	120	✓	✓	✓
	150	✓	✓	✓
	160	✓	✓	✓
	200	✓	✓	✓

To be continued...

Display	Refresh	Color Depth (bpp)		
Screen	Rate	8bpp(256 color)	16bpp(65K color)	32bpp(16.7M)
Resolution	(Hz)	Standard mode	High mode	True mode
1152 x 864	43	✓ (interlaced)	✓ (interlaced)	✓ (interlaced)
	47	✓ (interlaced)	✓ (interlaced)	✓ (interlaced)
	60	✓	✓	✓
	70	✓	✓	✓
	75	✓	✓	✓
	85	✓	✓	✓
	100	✓	✓	✓
1280 x 768	56	✓	✓	✓
	60	✓	✓	✓
	75	✓	✓	✓
	85	✓	✓	✓
1280 x 960	60	✓	✓	✓
	70	✓	✓	✓
	72	✓	✓	✓
	75	✓	✓	✓
	85	✓	✓	✓
	100	✓	✓	✓
	120	✓	✓	✓
1280 x 1024	60	✓	✓	✓
	70	✓	✓	✓
	72	✓	✓	✓
	75	✓	✓	✓
	85	✓	✓	✓
	90	✓	✓	✓
	100	✓	✓	✓
1600 x 1200	120	✓	✓	✓
	60	✓	✓	✓
	70	✓	✓	✓
	75	✓	✓	✓
	85	✓	✓	✓
	100	✓	✓	✓

To be continued...

Display	Refresh	Color Depth (bpp)		
Screen	Rate	8bpp(256 color)	16bpp(65K color)	32bpp(16.7M)
Resolution	(Hz)	Standard mode	High mode	True mode
1792 x 1344	60	✓	✓	✓
	75	✓	✓	✓
	85	✓	✓	✓
1800 x 1440	60	✓	✓	✓
	70	✓	✓	✓
1856 x 1392	60	✓	✓	✓
	72	✓	✓	✓
	75	✓	✓	✓
1920 x 1080	60	✓	✓	✓
	75	✓	✓	✓
1920 x 1200	60	✓	✓	✓
	75	✓	✓	✓
	85	✓	✓	✓
1920 x 1440	60	✓	✓	✓
	75	✓	✓	✓
2048 x 1536	60	✓	✓	✓
	66	✓	✓	✓

* Lower maximum refresh rates at some resolutions when using lower bandwidth memory configuration.

[illegible]

