

GV-R80X256D/GV-R80X256V

Radeon X800XT Graphics Accelerator

USER'S MANUAL

Rev. 101

12MD-R80X256V-101

Chapter 1 User's Manual

Copyright

Copyright by **GIGA-BYTE TECHNOLOGY CO., LTD. ("GBT")** No part of this manual may be reproduced or transmitted in any form without the expressed, written permission of **GBT**.

Trademarks

Third-party brands and names are the property of their respective owners.

Notice

Due to rapid change in technology, some of the specifications might be out of date before publication of this booklet.

The author assumes no responsibility for any errors or omissions which may appear in this document nor does it make a commitment to update the information contained herein.

Please do not remove any labels on VGA card, this may void the warranty of this VGA card.

May. 31, 2004 Taipei, Taiwan

Table of Contents

1. INTRODUCTION	4
1.1. PREFACE	4
1.2. KEY FEATURES	4
2. HARDWARE INSTALLATION	5
2.1. UNPACKING	5
2.2. BOARD LAYOUT	6
2.3. HARDWARE INSTALLATION	7
3. SOFTWARE INSTALLATION	9
3.1. WIN® XP DRIVER AND UTILITIES INSTALLATION	9
3.1.1. Operating system requirement	9
3.1.2. DirectX Installation	10
3.1.3. Driver Installation	12
3.1.4. Utilities on driver CD	15
3.1.5. Taskbar Icon	18
3.1.6. Display Properties pages	22
3.2. WIN® 98/98SE / WIN® 2000 / WIN® ME DRIVER INSTALLATION	31
3.3. BIOS FLASH UTILITY	31
4. Troubleshooting Tips	32
5. Appendix	33
5.1. How to reflash the BIOS	33
5.2. Resolutions and Color Depth Table (In Windows® XP)	34

1. INTRODUCTION

1.1. PREFACE

GV-R80X256D/GV-R80X256V features world's first 16-pipeline architecture for twice the rendering power, 256MB of memory to accelerate latest 3D games and new SMARTSHADER™ 2.1 technology supporting DirectX® 9.0 and the latest OpenGL® functionality to give developers the freedom to create more complicated and realistic visual effects than ever before. GV-R80X256D/GV-R80X256V supports the new AGP 8X standard, which allows large volumes of texture and vertex data to be transferred faster from system memory to the chip.

1.2. KEY FEATURES

- Powered by RADEON™ X800XT Visual Processing Unit (VPU)
- First to fully support DirectX® 9.0
- Supports the new AGP 8X standard
- First 16-pixel pipeline architecture
- All new 256-bit memory interface
- 256MB DDR III memory accelerates the latest 3D games
- First to use pixel shaders to accelerate video
- DVI-I and TV-Out connector supported

2. HARDWARE INSTALLATION

2.1. UNPACKING

The GV-R80X256D or GV-R80X256V package contains the following:

- The GV-R80X256D or GV-R80X256V graphics accelerator
- USER'S MANUAL
- Driver CD
- Power DVD CD
- Power Director (GV-R80X256V only)
- Game CD
- DVI-I to D-Sub adapter
- TV Out cable (S Video and AV-Out)
- Video in cable (GV-R80X256V only)



WARNING!

Expansion cards contain very delicate Integrated Circuit (IC) chips. To protect them against damage from static electricity, you should follow some precautions whenever you work on your computer.

1. Turn off your computer and unplug power supply.
2. Use a grounded wrist strap before handling computer components. If you do not have one, touch both of your hands to a safely grounded object or to a metal object, such as the power supply case.
3. Place components on a grounded antistatic pad or on the bag that came with the components whenever the components are separated from the system.

The card contains sensitive electric components, which can be easily damaged by static electricity, so the card should be left in its original packing until it is installed.

Unpacking and installation should be done on a grounded anti-static mat. The operator should be wearing an anti-static wristband, grounded at the same point as the anti-static mat.

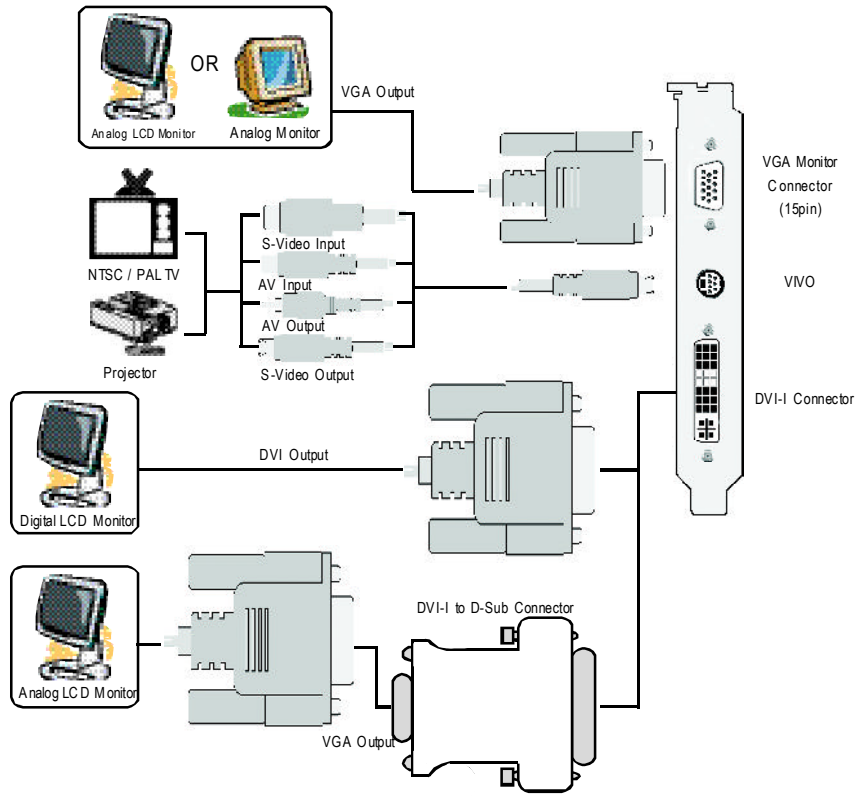
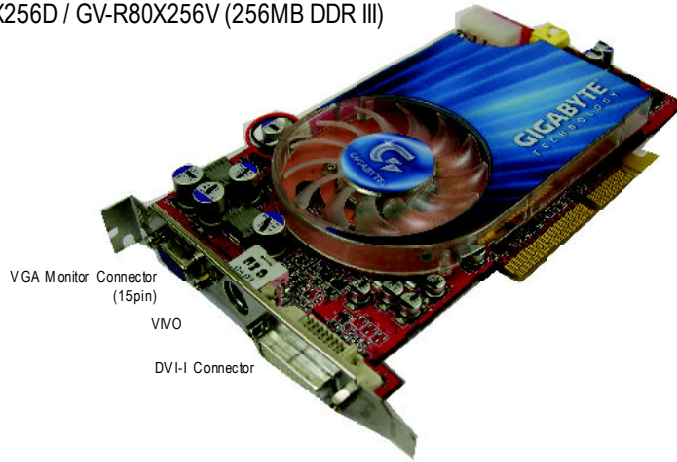
Inspect the card carton for obvious damage. Shipping and handling may cause damage to your card. Be sure there are no shipping and handling damages on the card before proceeding.

● **DO NOT APPLY POWER TO YOUR SYSTEM IF IT HAS BEEN DAMAGED ON THE CARD.**

● **In order to ensure your graphics card working correctly, please use official Gigabyte BIOS only. Use none official gigabyte BIOS might cause problem on the graphics card.**

2.2. BOARD LAYOUT

GV-R80X256D / GV-R80X256V (256MB DDR III)



2.3. HARDWARE INSTALLATION

Installing Your Graphics card.

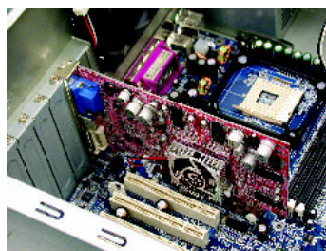
Now that you have prepared your computer, you are ready to install your graphics accelerator card.

To install your graphics accelerator card:

1. Power off the computer and monitor, then disconnect the display cable from the back of your computer.

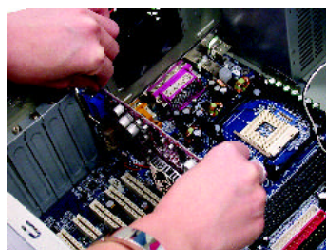


2. Remove the computer cover. If necessary, consult your computer's manual for help in removing the cover.

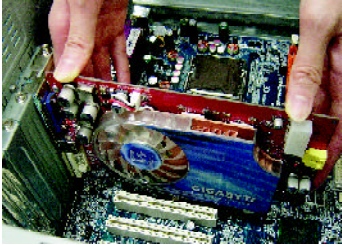


3. Remove any existing graphics card from your computer.

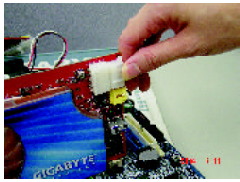
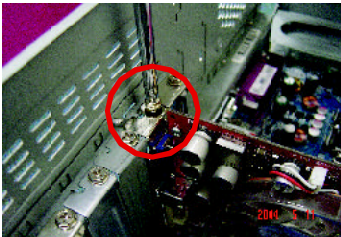
Or, if your computer has any on-board graphics capability, you may need to disable it on the motherboard. For more information, see your computer documentation.



4. Locate the AGP slot. If necessary, remove the metal cover from this slot; then align your graphics card with the AGP slot, and press it in firmly until the card is fully seated.

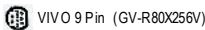
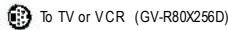
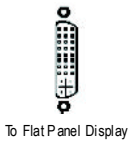
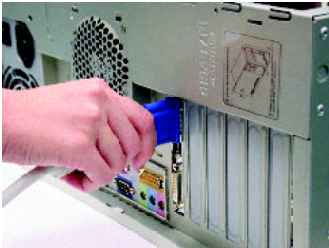


5. Replace the screw to fasten the card in place, and replace the computer cover.



After installation, please connect the power cable to your GV-R80X256D / GV-R80X256V graphics card, or system will not boot.

6. Plug the display cable into your card; then turn on the computer and monitor. If your graphics card came with a DVI connector, you can connect a flat panel display to the appropriate connector, as shown below...



You are now ready to proceed with the installation of the graphics card drivers. Please refer to next chapter for detailed instructions.

3. SOFTWARE INSTALLATION

In this manual, we assume that your CD-ROM Drive letter to be Drive D:

The installation of Win® 98/98SE / Win® 2000 / Win® ME / Win® XP drivers is very simple. When you insert the driver CD into your CD-ROM drive, you can see the AUTORUN window (if it does not show up, run "D:\setup.exe"). Then you can follow the guides to setup your graphics card driver. (Please follow the subsection 3.1.3 "Driver installation" to install the driver for your graphics accelerator.)

3.1. WIN® XP DRIVER AND UTILITIES INSTALLATION

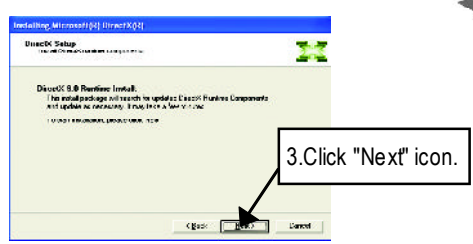
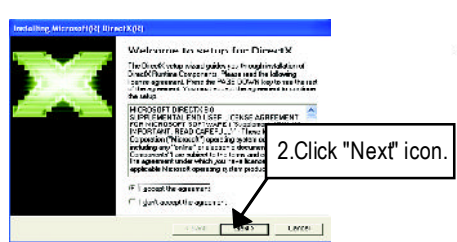
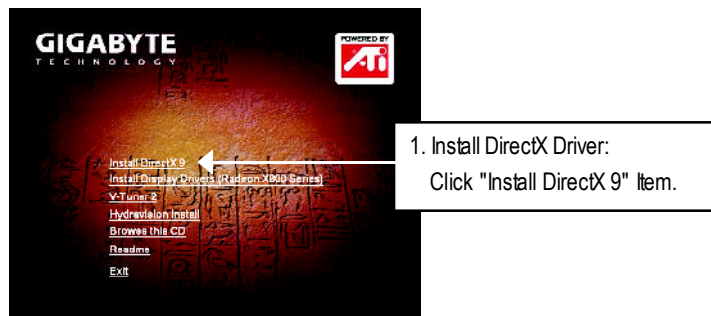
3.1.1. Operating system requirement

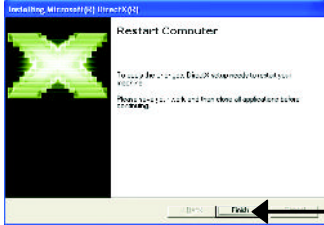
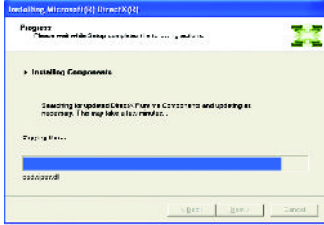
- When loading the graphics card drivers for the system, please make sure your system has installed DirectX 9 or later version.
- If you install the graphics card drivers for the motherboard, which consist of SIS or VIA chipsets, please install the appropriate driver program for that motherboard. Or please contact your motherboard nearest dealer for motherboard driver.

3.1.2. DirectX Installation

Install Microsoft DirectX9(or later version) to enable 3D hardware acceleration support for Windows® 98 / 98SE / Windows® 2000 / Windows® ME or Windows® XP to achieve better 3D performance.

- Note: For software MPEG support in Windows® 98/98SE/ Windows® 2000 / Windows® ME or Windows® XP, you must install DirectX 9(or later version) first.





4. Click "Finish" item.

Then the DirectX9 installation is completed.

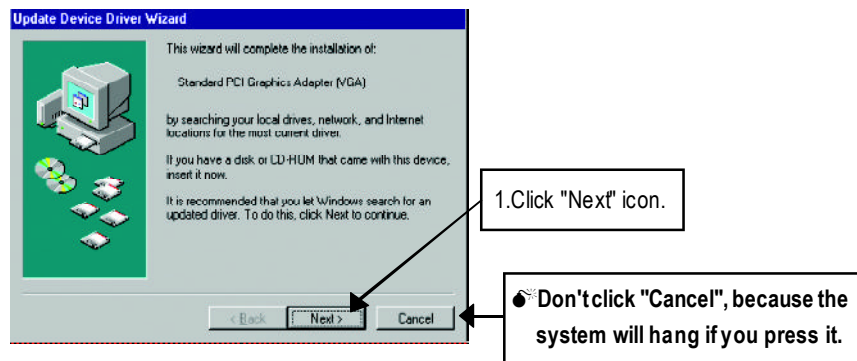
3.1.3. Driver Installation

The following is the step-by-step installation guide.

Step 1: New Hardware Found

After GV-R80X256D/GV-R80X256V is inserted into your computer at the first time, the windows will automatically detect a new hardware in the system and pop out a "New Hardware Found" message. Please select "Do not install a driver" and press OK.

Step 2: Update Device Driver Wizard: Standard PCI Graphics Adapter(VGA)



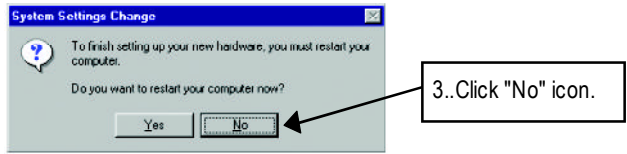
Step 3: Update Device Driver Wizard: Finish

At this time, system will ask for your Windows CD in order to complete the VGA driver installation.

If you don't have the CD, you can press C:\Windows\System directory.

Step 4: System Setting Change

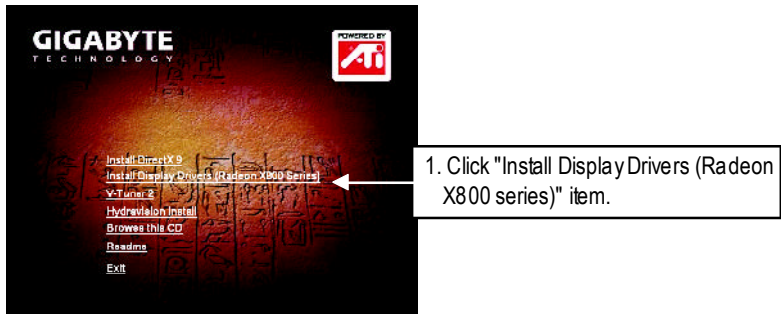




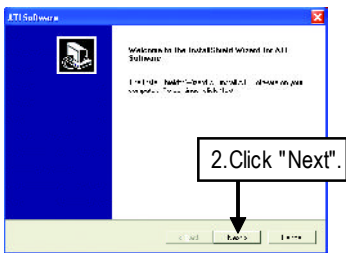
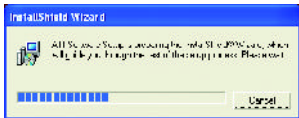
3..Click "No" icon.

After the system has finished loading, insert the GV-R80X256D/GV-R80X256V driver CD disk into your CD-ROM, and then you can see the AUTORUN window. If it does not show up, please run "D:\setup.exe".

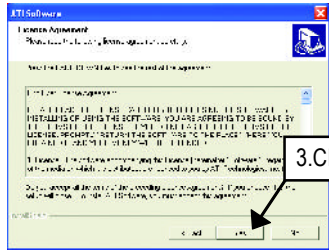
Step 5: Driver Setup
(Pictures below are shown in Windows XP)



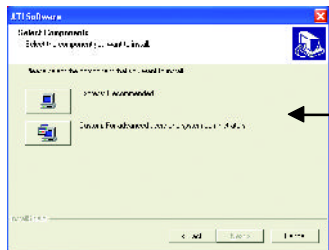
1. Click "Install Display Drivers (Radeon X800 series)" item.



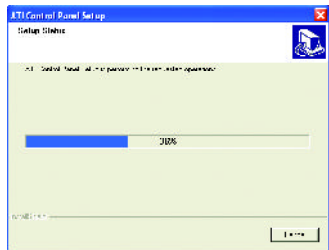
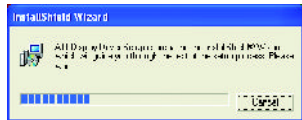
2. Click "Next".



3. Click "Yes".



4. Click "Express" or "Custom" icon.



5. Click "Finish" to restart computer.

3.1.4. Utilities on driver CD

The utilities include Display Driver and V-Tuner2 utilities. Please follow the steps.

- Install V-Tuner2 :

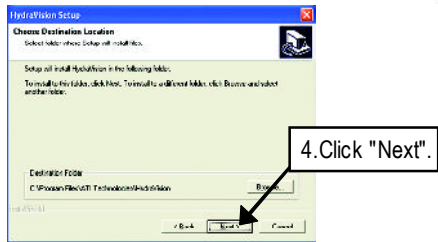
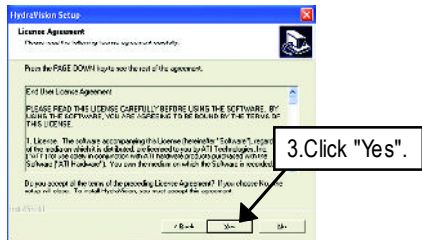
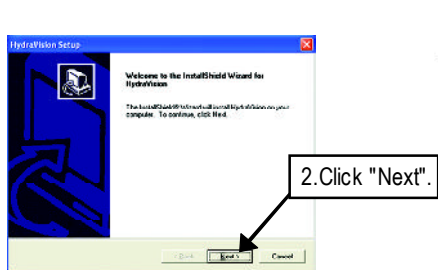
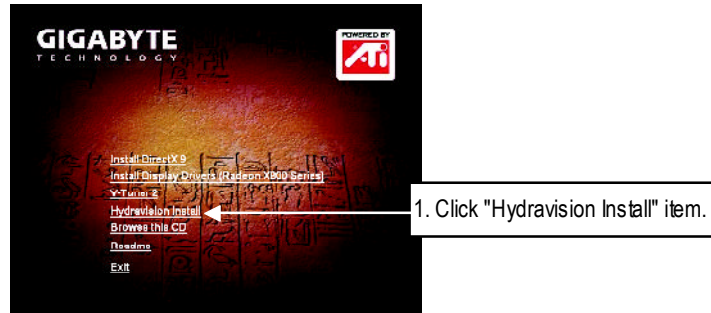
1. Click "V-Tuner2" item.

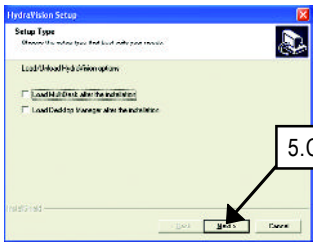
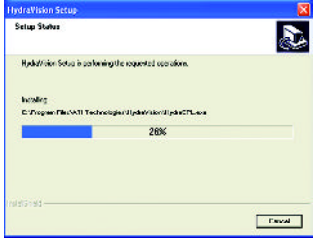
2. Click "Next".

3. Enter your name and company.

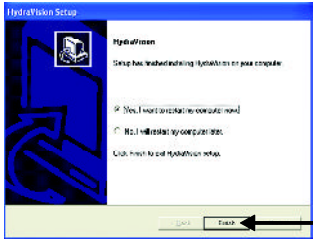
4. Click "Finish" to restart computer.

● Hydravision Install:






5. Click "Next".



6. Click "Finish" to restart computer.

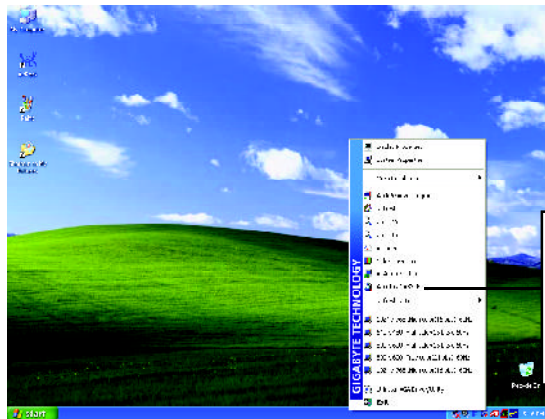
3.1.5. Taskbar Icon

After installation of the display drivers, you will find an GBT icon  on the taskbar's status area. Right-clicking this icon opens the GBT control panel, showing a menu composed of shortcuts of the graphics card's enhanced and other functions.

You may click the "Display Properties" item, and then click Settings. Click "Advanced" after clicking Settings. Click the appropriate tab to change your display settings.



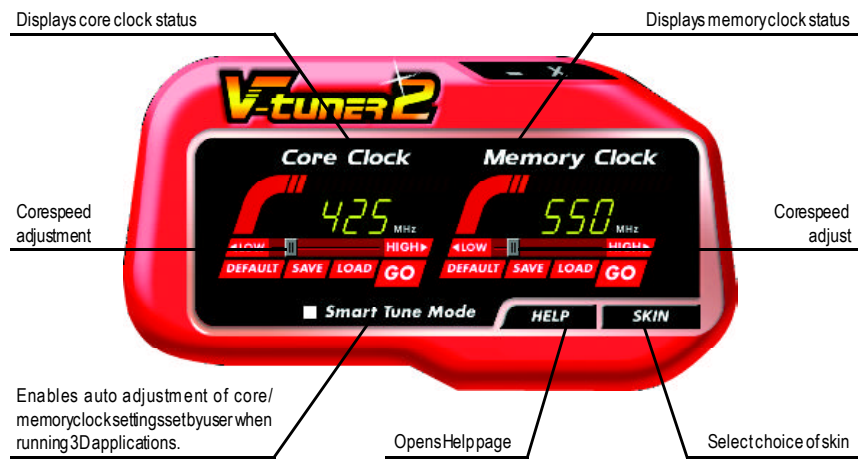
Right click the icon.



You can link to GBT website for updated information about the graphics card, latest drivers, and other information.

V-Tuner 2 (Overclock Utility)

V-Tuner 2 lets you adjust the working frequency of the graphic engine and video memory (Core Clock and Memory Clock).



VGA Information


VGA Info lists the relevant information about your card.

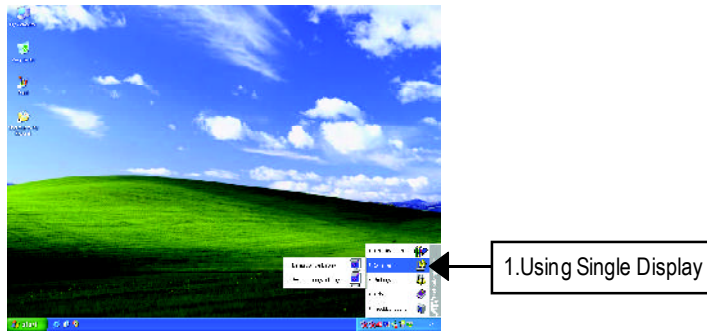


Color Adjust

Color Adjust allows you to make color adjustments, such as brightness, contrast and gamma values for each or all of RGB colors.



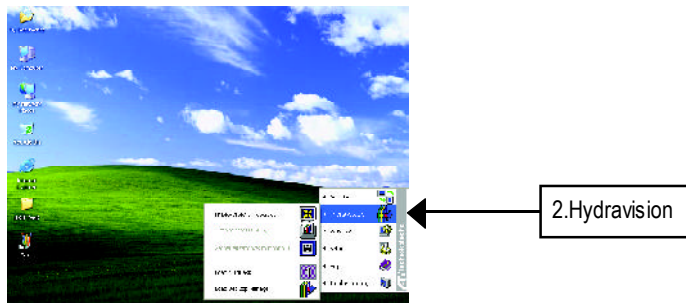
After installation of the display drivers, you will find an ATI icon  on the taskbar's status area. Clicking this icon opens the ATI control panel.



HYDRAVISION™

HYDRAVISION™ and the Desktop Manager are activated whenever Windows® starts. Installing HYDRAVISION™ adds menu options to the ATI icon.

Click on the ATI icon to access the application's features and help, or to unload the HYDRAVISION™ Desktop Manager.



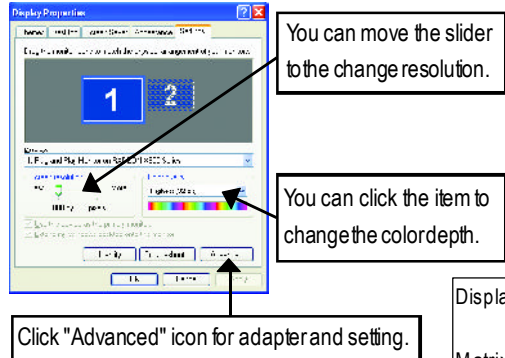
HYDRAVISION™ is primarily software designed for multiple monitor settings. GV-R80X256D GV-R80X256V graphic cards that have more than one display output can benefit fully from this software. GV-R80X256D/GV-R80X256V with only one display output can still take advantage of the many features of HYDRAVISION™. HYDRAVISION™ installation enables the Desktop Manager and creates a Windows® program group for HYDRAVISION™ display management software.

3.1.6. Display Properties pages

The screen shows the information of display adapter, color, the range of display area and the refresh rate.

Settings (Resolutions and Color depth for windows)

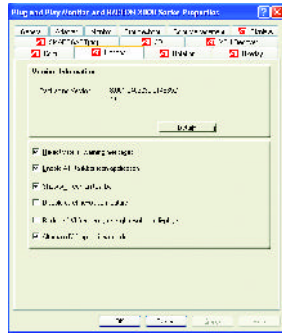
The Setting properties page allows you to adjust the Direct 3D settings.



Display	Model	GV-R80X256D GV-R80X256V
Matrix	CRT+TV	Yes
	CRT+DVI	Yes
	DVI+TV	Yes
	DVI+TV+CRT	Yes

Click "Advanced", into details settings:

Options Properties

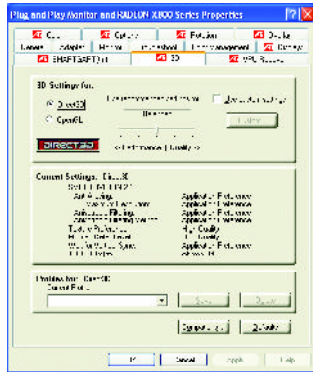


- **Version Information** provides the Packing version number information.
- **Details button** access to the Details tab which lists the card's hardware details and driver information.
- **Re-activate all warning messages** allows you to reactivate any disabled graphics warning messages.
- **Enable ATI taskbar icon application** enables or disables the ATI taskbar icon. However, this feature must be enabled for ATI hotkey support.

- **Show ATI icon on taskbar** adds or removes the ATI icon from the taskbar.
- **Disable quick resolution feature** is accessible by left-clicking the ATI icon in the taskbar.
- **Reduce DVI frequency on high-resolution displays** Resolves display corruption or no image at high resolutions (for example 1280x1024 @75Hz) using a digital DVI display. (This setting has no effect when using a DVI-to-VGA adapter.)
- **Alternate DVI operational mode** Use this option if you are experiencing display corruption on your DVI flat panel.

Direct 3D Properties:

The Direct 3D properties page allows you to adjust the Direct3D settings.



- **3D Settings for radio buttons**
Selects either Direct3D® or OpenGL® as the format to be altered in the workspace.
- **Performance/Quality slider**
Controls the overall performance/image quality of your graphic application. Moving the slider to the left will maximize application performance, while moving the slider to the right will maximize image quality.

- **Use Custom Settings checkbox**

When **Custom Settings** is checked, the Main Settings slider is disabled, allowing you to move each individual slider in the Custom Settings section below. Setting the individual sliders gives you complete control over your application experience. Using Custom Settings is recommended for advanced users only.

- **Custom button**

Opens the Custom Properties dialog. Using custom settings is recommended for advanced users only. For more information, refer to the Custom Properties Dialog section.

- **Current Settings**

Shows the current settings for either Direct3D® or OpenGL®, whichever is selected.

- **Profiles for**

Allows you to save a unique profile of the custom settings you have selected. Once you have completed making your custom settings, click OK in the Custom Properties dialog. Enter a name in Current Profile and click the Save button. Saved profiles are selected from the Current Profile drop-down window. To delete a profile, select it from the Current Profile drop-down window and press the Delete button.

- **Compatibility settings button**

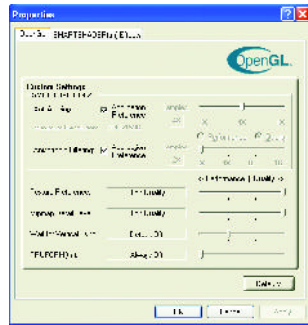
Accesses advanced settings that may solve compatibility issues for a few specific Direct3D® or OpenGL® applications, whichever is selected. For more information, refer to the Compatibility Dialog section.

- **Defaults**

Resets to the dialog's default values.

OpenGL Properties:

The OpenGL properties page gives you complete control of the OpenGL settings.



■ SMOOTHVISION 2.1 Anti-Aliasing slider

SMOOTHVISION. (Anti-Aliasing) improves image quality by removing jagged edges from 3D images, resulting in smoother, more natural-looking objects. Anti-Aliasing can be applied using different sample patterns and sample points such as 2X or 4X. Moving this slider to the right increases sampling to provide the most realistic 3D image.

Select the **Application Preference** checkbox for high-quality images, with a negligible reduction in the application's performance. Deselect the **Application Preference** checkbox to customize the anti-aliasing.

■ SMOOTHVISION 2.1

- **Anisotropic Filtering checkbox** uses a texture filtering technique that blends multiple texture samples together. Selecting **Application Preference** will result in high quality textures, with a negligible reduction in the application's performance.
- **Anisotropic Filtering slider** By moving this slider to the right, as the number of samples taken increases, the quality of the final image increases significantly. 16X provides extremely detailed, crisp-looking images as a result of the largest number of texture samples possible.

■ Texture Preference slider

Selecting this decides whether your application should use high quality or high performance textures. Moving the slider to the right delivers the highest quality experience. Moving the slider to the left emphasizes a high performance solution while still providing good visuals.

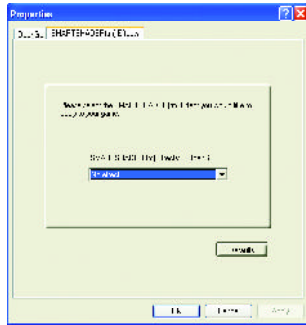
■ Mipmap Detail Level slider

This will allow you to choose the texture quality of the mipmaps the application will use. Mipmaps are a collection of different sized textures of the same image. As the user moves closer to a 3D object the image quality should increase, requiring a higher quality texture of the same image. The base mipmap is the highest quality texture, and all subsequent mipmaps are smaller sized textures of the same image. Moving the slider to the right selects a higher quality base mipmap, delivering the highest quality application experience. Moving the slider to the left selects a lower quality mipmap, delivering the highest application performance.

■ Wait for Vertical Sync slider

This will lower the frame rate of full screen games but reduce the image tearing that can occur with the higher frame rate. Selecting **Application Preference** allows the application to decide whether or not it should display its frames at the refresh rate of the monitor. Selecting **Always Off** allows the application to run at its highest possible frame rate, regardless of the monitor's refresh rate

■ SMARTSHADER. Effects



- SMARTSHADER™ Effects drop-down list SMARTSHADER™ applies preset pixel effects on OpenGL® or Direct3D® applications. Choose the desired effect and click OK.
- Defaults button Restores the default settings.

■ Direct 3D® Compatibility Settings



- Support DXT texture formats
There are a few applications that can only support a limited number of texture formats. By selecting Disabled, the driver will not support DXT texture formats, thus reducing the number of texture formats supported.
- Alternate pixel center
May eliminate problems with some Direct3D® games which display vertical and horizontal lines around textures, or text that appears incorrect. However, this setting should only be used if you are experiencing the symptoms mentioned, as it may cause problems with other games.
- Defaults button Resets to the dialog's default values.

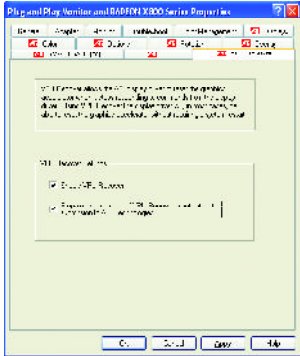
■ OpenGL® Compatibility Settings



- **Force Z-buffer depth**
Explicitly set the Z-Buffer depth. Most applications will work best when Disabled is selected
- **Triple Buffering**
Improves the frame rate of games when Wait for Vertical Sync is enabled in Custom Settings. Enabling Triple Buffering may decrease application performance as there will be less frame-buffer memory available. If there is insufficient memory available to support this feature it will be automatically disabled. It is recommended that this feature remain disabled.

- **Defaults button**
Resets to the dialog's default values.

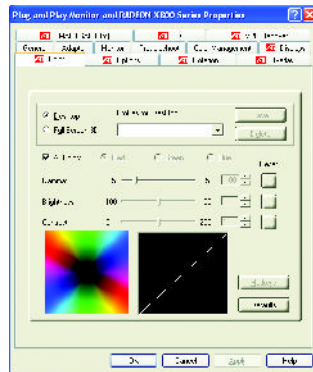
■ VPU Recover



- **Enable VPU Recover checkbox**
Enables VPU Recover.
- **Prepare an Error Report checkbox**
When VPU Recover is activated a dialog will prompt you to submit an automatically generated error report to ATI. This error report will help ATI to determine the cause of the problem and help create more stable drivers. To disable this feature, deselect the Prepare an Error Report checkbox.

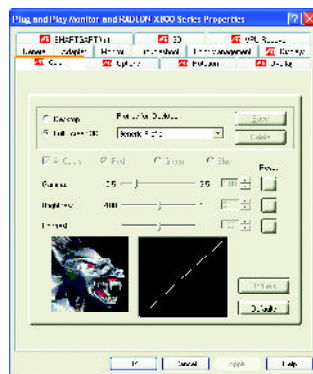
Color Properties:

The **Color Properties** is used to adjust the color settings. It also allows gamma control for video playing of the Video Overlay. The color settings affect all display devices mapped to the view. You can change red, green, and blue display colors. Set Desktop and Video Overlay brightness (gamma) levels can also be changed.



- **Desktop** increases or decreases the color brightness of your desktop. The higher the gamma value, the higher the brightness and contrast of your display.
- **All Colors** checkbox adjust the RGB individually or adjust all three colors at the same time.
- **Gamma/Brightness/Contrast** adjust the color by moving the slider with your mouse, to increase or decrease the color gamma/brightness/contrast of Direct 3D and OpenGL games played in fullscreen mode. (NOTE: Game Gamma is NOT supported in Windows NT4.0)

- **Default** resets the desktop brightness and color settings to the default values.



- **Full Screen 3D** radio button Select Full Screen 3D to configure the color settings for your 3D application. Note that the configured settings will only be apparent within a full screen 3D application environment.

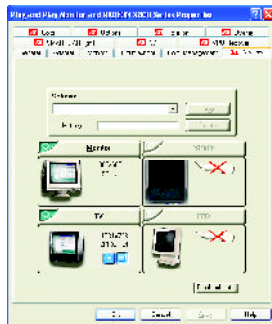
Display Properties:

If your VGA card is equipped with a S-Video connector, you can use a second output device (e.g. a TV or a computer monitor) as part of your operating desktop extending your desktop to second device or copying your desktop on the second device.



Select Display Type

Enable / Disable "Extend my windows desktop onto this monitor"



The Display tab provides the multi monitor features. Here you can enable/disable display devices and swap the assignment of **Primary** and **Secondary** displays.

Connecting your graphics card to a TV or VCR

To connect your GV-R80X256D/ GV-R80X256V graphics card to a TV (or VCR), use an S-Video cable. However, most TVs (and VCRs) have a Composite video input, in which case you can use the supplied

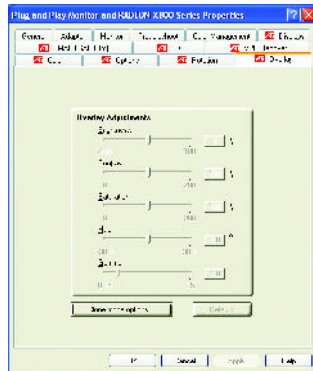
S-Video-to-Composite video adapter.

1. Turn off your computer and your television (or VCR).
2. Ensure your graphics card was installed correctly. (For information about placing the card in your computer and installing the enhanced graphics driver, see the user's manual.)
3. Determine if your television (or VCR) has an S-Video or Composite video connection.
4. Looking at the back of your computer, locate your S-Video Out. Using an S-Video cable or the supplied adapter cable, attach one end of the cable to your graphics card and the other to your television (or VCR).
5. Turn on your television (or VCR) then your computer.

Overlay Properties:

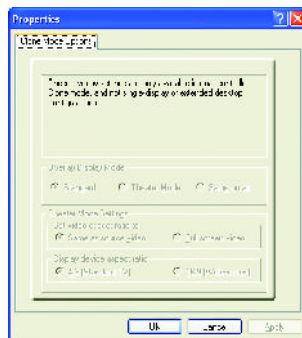
The **Overlay Properties** is used to adjust the Brightness / Contrast / Saturation / Hue / Gammasettings.

Overlay properties allows for the viewing of full-motion video on your PC. However, there is only one video overlay, which is only available on the **Primary** display. The video overlay controls are automatically activated during playback of any video file type that supports overlay adjustments.



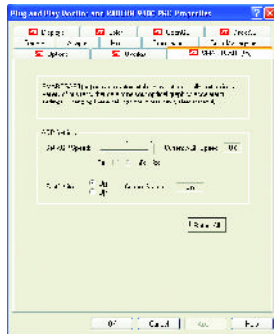
■ **Overlay Adjustments**

- **Brightness** allows you to adjust the brightness of the video image.
 - **Contrast** allows you to adjust the contrast in the video image.
 - **Saturation** allows you to adjust the vividness of the color. Sliding it all the way to the left removes all color and produces a black and white picture.
 - **Hue** allows you to adjust the pureness or tint of the red, green and blue components of the color.
 - **Gamma** allows you to adjust the overall intensity of the video image.
- **Defaults button** allows you to reset the Overlay settings to default values.
 - **Theater Mode checkbox** allows you to display video playback in full screen on a secondary monitor, if available and enabled.

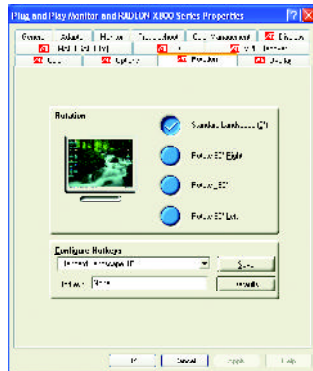


SMARTGART(tm) Properties:

The **SMARTGART™ Properties** ensures system stability by automatically performing a variety of bus tests that determine your optimal graphics accelerator settings. Changing these settings might result in system instability.

**Rotation :**

Use the Rotation tab to rotate the image on your display up to 180 degrees. This feature is useful when using a flat panel display that can be physically rotated to different positions.



3.2. Win® 98/98SE / Win® 2000 / Win® ME driver installation

With Windows running on your computer, you need to install the graphics card driver to take advantage of the higher performance, resolutions, and special graphics features of the graphics card. To ensure you install the latest driver, insert the Installation CD that shipped with your graphics card.

To install the graphics card driver for Win®98/98SE/Win® 2000/Win® ME, please insert the Installation CD. Then the AUTORUN window will show up. Click **Install Display Driver** item, and follow the wizard to install the driver.

If Windows® does not show the CD automatically, please run following steps:

1. Click the Start button on the control bar.
2. Select Run.
3. Type the following: D:\SETUP.exe
(If D is not your CD-ROM drive, substitute D with the correct drive letter.)
4. Click "OK".
5. Click on "Install Display Drivers" to begin the Installation Wizard.
6. Click "Next".
7. Click "Yes" to the license agreement.
8. Follow the Wizard's on-screen instructions to complete the installation.



Please make sure the Windows® 2000 have installed Windows® 2000 Service Pack (or later) before installing the graphics accelerator driver.

3.3. BIOS FLASH UTILITY

BIOS update procedure:

- Note: Please download the newest BIOS from our website (www.gigabyte.com.tw) or contact your local dealer for the file.
- If you want to realize the BIOS flash information, please refer to detail on subsection 5.1. "How to reflash the BIOS".

4. Troubleshooting Tips

The following troubleshooting tips may help if you experience problems. Contact your dealer or GBT for more advanced troubleshooting information.

- Check that the card is seated properly in the AGP slot.
- Ensure that the display cable is securely fastened to the card's display connector.
- Make sure that the monitor and computer are plugged in and receiving power.
- If necessary, disable any built-in graphics capabilities on your motherboard. For more information, consult your computer's manual or manufacturer.
(NOTE: Some manufacturers do not allow the built-in graphics to be disabled or to become the secondary display.)
- Make sure you selected the appropriate display device and graphics card when you installed the graphics driver.
- If you have problems during bootup, start your computer in Safe Mode. In Windows® 98 SE and Windows® Me, press and hold the CTRL key until the Microsoft® Windows® Startup Menu appears on the screen. Then select the number for Safe Mode, and press Enter. (You can also use F8 to bring up the Microsoft Windows® Startup Menu.) In Safe Mode, bring up the Device Manager and check for duplicate display adapter and monitor entries if you are only using one graphics card.
- For more assistance, use the Troubleshooting Guide located in the Windows® Help or contact your computer manufacturer.



If necessary, adjust your monitor's setting by monitor's adjust panel to make the screen looks focused, crisp, and sharp. (Please refer to the monitor's manual.)

5. Appendix

5.1. How to reflash the BIOS

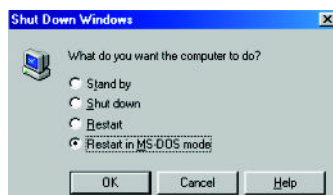


We use GV-AR64SH VGA card and Atiflash BIOS flash utility as example.

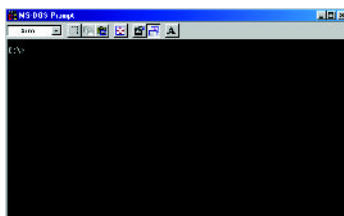
How to reflash the BIOS for your graphics card?

1. Extract the Zip file to the drive C: or A:
2. Restart your PC in MS-DOS mode

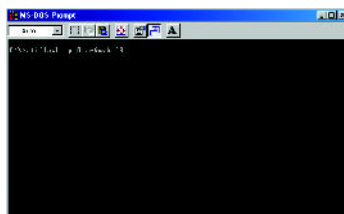
(This function only for Windows 98/98SE, If your OS is Windows 2000 / Windows Me .. / Windows XP, please use the bootable disk to MS-DOS mode)



3. Change the command path to the file location C:\> or A:\>



4. Reflash BIOS command as below : C:\> atiflash -p 0 <filename>



5. Reboot your PC when it's done.

5.2. Resolutions and Color Depth Table (In Windows® XP)

GV-R80X256D/GV-R80X256V 2D Single Display Modes

Display Screen Resolution	Refresh Rate (Hz)	Color Depth (bpp)		
		8bpp(256 color) Standard mode	16bpp(65K color) High mode	32bpp(16.7M) True mode
640 x 480	60	✓	✓	✓
	72	✓	✓	✓
	75	✓	✓	✓
	85	✓	✓	✓
	90	✓	✓	✓
	100	✓	✓	✓
	120	✓	✓	✓
	160	✓	✓	✓
	200	✓	✓	✓
800 x 600	47	✓ (interlaced)	✓ (interlaced)	✓ (interlaced)
	56	✓	✓	✓
	60	✓	✓	✓
	70	✓	✓	✓
	72	✓	✓	✓
	75	✓	✓	✓
	85	✓	✓	✓
	90	✓	✓	✓
	100	✓	✓	✓
	120	✓	✓	✓
	160	✓	✓	✓
	200	✓	✓	✓
1024 x 768	43	✓ (interlaced)	✓ (interlaced)	✓ (interlaced)
	60	✓	✓	✓
	70	✓	✓	✓
	72	✓	✓	✓
	75	✓	✓	✓
	85	✓	✓	✓
	90	✓	✓	✓
	100	✓	✓	✓
	120	✓	✓	✓
	150	✓	✓	✓
	160	✓	✓	✓
	200	✓	✓	✓

To be continued...

Display Screen Resolution	Refresh Rate (Hz)	Color Depth (bpp)		
		8bpp(256 color) Standard mode	16bpp(65K color) High mode	32bpp(16.7M) True mode
1152 x 864	43	✓ (interlaced)	✓ (interlaced)	✓ (interlaced)
	47	✓ (interlaced)	✓ (interlaced)	✓ (interlaced)
	60	✓	✓	✓
	70	✓	✓	✓
	75	✓	✓	✓
	85	✓	✓	✓
	100	✓	✓	✓
1280 x 768	56	✓	✓	✓
	60	✓	✓	✓
	75	✓	✓	✓
	85	✓	✓	✓
1280 x 960	60	✓	✓	✓
	70	✓	✓	✓
	72	✓	✓	✓
	75	✓	✓	✓
	85	✓	✓	✓
	100	✓	✓	✓
	120	✓	✓	✓
1280 x 1024	43	✓ (interlaced)	✓ (interlaced)	✓ (interlaced)
	47	✓ (interlaced)	✓ (interlaced)	✓ (interlaced)
	60	✓	✓	✓
	70	✓	✓	✓
	75	✓	✓	✓
	85	✓	✓	✓
	90	✓	✓	✓
	100	✓	✓	✓
	120	✓	✓	✓
	1600 x 1200	60	✓	✓
70		✓	✓	✓
75		✓	✓	✓
85		✓	✓	✓
100		✓	✓	✓

To be continued...

Display Screen Resolution	Refresh Rate (Hz)	Color Depth (bpp)		
		8bpp(256 color) Standard mode	16bpp(65K color) High mode	32bpp(16.7M) True mode
1792 x 1344	60	✓	✓	✓
	75	✓	✓	✓
	85	✓	✓	✓
1800 x 1440	60	✓	✓	✓
	70	✓	✓	✓
1856 x 1392	60	✓	✓	✓
	72	✓	✓	✓
	75	✓	✓	✓
1920 x 1080	60	✓	✓	✓
	75	✓	✓	✓
1920 x 1200	60	✓	✓	✓
	75	✓	✓	✓
	85	✓	✓	✓
1920 x 1440	60	✓	✓	✓
	75	✓	✓	✓
2048 x 1536	60	✓	✓	✓
	66	✓	✓	✓

* Lower maximum refresh rates at some resolutions when using lower bandwidth memory configuration.

