

## Declaration of Conformity

We, Manufacturer/Importer  
(full address)

**G.B.T. Technology Trading GmbH**  
**Ausschläger Weg 41, 1F 20537 Hamburg, Germany**

declare that the product  
(description of the apparatus, system, installation to which it refers)

VGA Card

GV-NX62TC256DS

is in conformity with  
(reference to the specification under which conformity is declared)  
in accordance with 89/336 EEC-EMC Directive

- |   |  |   |   |
|---|--|---|---|
| <input type="checkbox"/> <b>EN 55011</b>            | Limits and methods of measurement of radio disturbance characteristics of industrial, scientific and medical (ISM) high frequency equipment                | <input checked="" type="checkbox"/> <b>EN 61000-3-2</b> | Disturbances in supply systems caused   |
| <input type="checkbox"/> <b>EN 55013</b>            | Limits and methods of measurement of radio disturbance characteristics of broadcast receivers and associated equipment                                     | <input checked="" type="checkbox"/> <b>EN 61000-3-3</b> | Disturbances in supply systems caused by household appliances and similar electrical equipment "Voltage fluctuations" |
| <input type="checkbox"/> <b>EN 55014-1</b>          | Limits and methods of measurement of radio disturbance characteristics of household electrical appliances, portable tools and similar electrical apparatus | <input checked="" type="checkbox"/> <b>EN 55024</b>     | Information Technology equipment-Immunity characteristics-Limits and methods of measurement                           |
| <input type="checkbox"/> <b>EN 55015</b>            | Limits and methods of measurement of radio disturbance characteristics of fluorescent lamps and luminaries   | <input type="checkbox"/> <b>EN 50082-1</b>              | Generic immunity standard Part 1: Residual, commercial and light industry   |
| <input type="checkbox"/> <b>EN 55020</b>            | Immunity from radio interference of broadcast receivers and associated equipment   | <input type="checkbox"/> <b>EN 50082-2</b>              | Generic immunity standard Part 2: Industrial environment  |
| <input checked="" type="checkbox"/> <b>EN 55022</b> | Limits and methods of measurement of radio disturbance characteristics of information technology equipment   | <input type="checkbox"/> <b>EN 55014-2</b>              | Immunity requirements for household appliances tools and similar apparatus  |
| <input type="checkbox"/> <b>DIN VDE 0855</b>        | Cabled distribution systems; Equipment   | <input type="checkbox"/> <b>EN 50091- 2</b>             | EMC requirements for uninterruptible power systems (UPS)  |
| <input type="checkbox"/> <b>part 10</b>             | for receiving and/or distribution from   |   |   |
| <input type="checkbox"/> <b>part 12</b>             | sound and television signals   |   |   |

☒ **CE marking**



(EC conformity marking)

**The manufacturer also declares the conformity of above mentioned product with the actual required safety standards in accordance with LVD 73/23 EEC**

- |  |   |  |   |
|--|---|--|---|
| <input type="checkbox"/> <b>EN 60065</b> | Safety requirements for mains operated electronic and related apparatus for household and similar general use | <input type="checkbox"/> <b>EN 60950</b>   | Safety for information technology equipment including electrical business equipment |
| <input type="checkbox"/> <b>EN 60335</b> | Safety of household and similar electrical appliances   | <input type="checkbox"/> <b>EN 50091-1</b> | General and Safety requirements for uninterruptible power systems (UPS)             |

**Manufacturer/Importer**

Signature : Timmy Huang

(Stamp)

Date : Aug. 2, 2005

Name : Timmy Huang

# DECLARATION OF CONFORMITY

Per FCC Part 2 Section 2.1077(a)



**Responsible Party Name:** G.B.T. INC. (U.S.A.)

**Address:** 17358 Railroad Street  
City of Industry, CA 91748

**Phone/Fax No:** (818) 854-9338/ (818) 854-9339

hereby declares that the product

**Product Name:** VGA Card

**Model Number:** GV-NX62TC256DS

Conforms to the following specifications:

FCC Part 15, Subpart B, Section 15.107(a) and Section 15.109  
(a), Class B Digital Device

## **Supplementary Information:**

This device complies with part 15 of the FCC Rules. Operation is subject to the following two conditions: (1) This device may not cause harmful and (2) this device must accept any interference received, including that may cause undesired operation.

Representative Person's Name: ERIC LU

Signature: Eric Lu

Date: Aug. 2, 2005

# GV-NX62TC256DS

GeForce™ 6200 Graphics Accelerator

## User's Manual

Rev. 101

12MD-NX62TC6DS-101R

### Copyright

© 2005 GIGABYTE TECHNOLOGY CO., LTD

Copyright by GIGA-BYTE TECHNOLOGY CO., LTD. ("GBT"). No part of this manual may be reproduced or transmitted in any form without the expressed, written permission of GBT.

### Trademarks

Third-party brands and names are the property of their respective owners.

### Notice

Please do not remove any labels on VGA card, this may void the warranty of this VGA card.

Due to rapid change in technology, some of the specifications might be out of date before publication of this booklet.

The author assumes no responsibility for any errors or omissions that may appear in this document nor does the author make a commitment to update the information contained herein.

# Table of Contents

1. Introduction .....	3
1.1. Features .....	3
1.2. Minimum system requirement .....	3
2. Hardware Installation .....	4
2.1. Board layout .....	4
2.2. Hardware installation .....	6
3. Software Installation .....	8
3.1. Win® XP driver and utilities installation .....	8
3.1.1. Operating system requirement .....	8
3.1.2. DirectX installation .....	9
3.1.3. Driver installation .....	11
3.1.4. Utilities on driver CD .....	13
3.1.5. Taskbar icon .....	15
3.1.6. Display properties pages .....	18
3.1.7. nView properties pages .....	22
3.2. Win® 2000 driver installation .....	27
4. Troubleshooting Tips .....	28
5. Appendix .....	29
5.1. How to Reflash the BIOS .....	29
5.1.1. Reflash BIOS in MS-DOS mode .....	29
5.1.2. Reflash BIOS in Windows mode .....	29
5.2. Resolutions and color depth table (In Windows® XP) .....	30

# 1. Introduction

## 1.1. Features

- The graphics card supports NVIDIA TurboCache technology, which enhances graphics card performance by allowing the graphics processing unit (GPU) to dynamically share the available system memory. The total effective VGA memory differs depending on system memory. See the following tables for details:

System memory	256 MB	512 MB or above
VGA onboard memory	64 MB	64 MB
Shared system memory	64 MB	192 MB
Total effective VGA memory	128 MB	256 MB

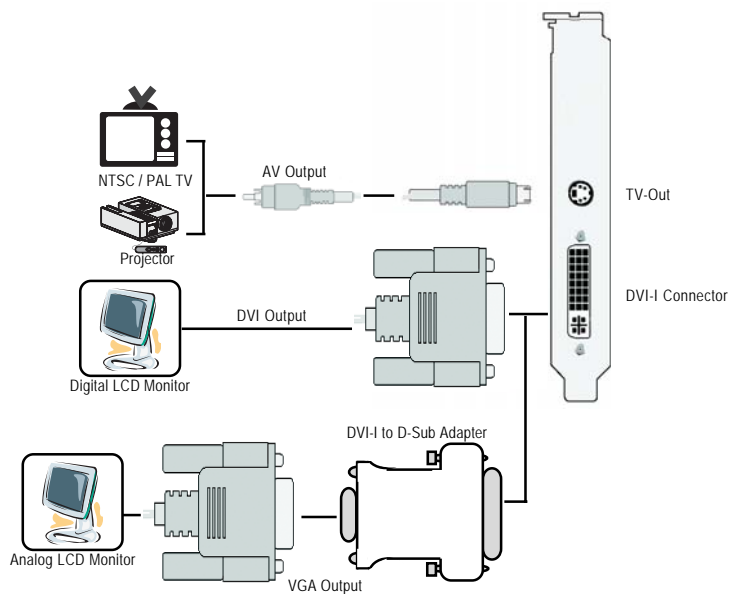
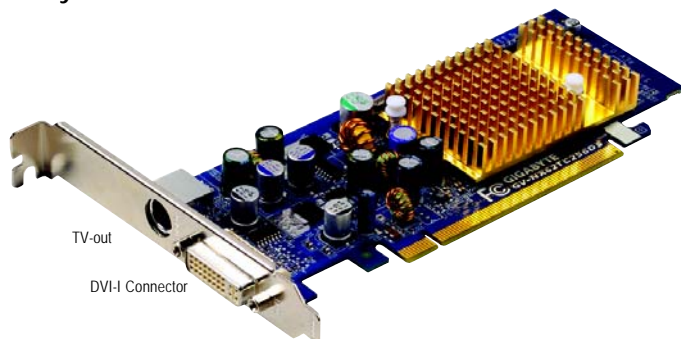
- Powered by **NVIDIA® GeForce™ 6200** with TurboCache Technology Graphics Processing Unit (GPU)
- Supports the newest PCI Express x 16
- Supports DirectX 9.0c
- Supports AV / S-Video and HDTV output
- Supports D-Sub (requires adapter to support this function) and DVI-I connector

## 1.2. Minimum system requirement

- IBM® or 100% PC compatible with Pentium® III 650MHz or AMD Athlon 650MHz class processor or higher
- One PCI Express x 16 slot
- Operating Systems Win® 2000 / Win® XP
- 256MB system memory
- 50MB of available disk space for full installation
- CD-ROM or DVD-ROM drive
- A PCI Express compliant motherboard and power supply.

## 2. Hardware Installation

### 2.1. Board Layout





Expansion cards contain very delicate Integrated Circuit (IC) chips. To protect them against damage from static electricity, you should follow some precautions whenever you work on your computer.

1. Turn off your computer and unplug power supply.
2. Use a grounded wrist strap before handling computer components. If you do not have one, touch both of your hands to a safely grounded object or to a metal object, such as the power supply case.
3. Place components on a grounded antistatic pad or on the bag that came with the components whenever the components are separated from the system.

The card contains sensitive electric components, which can be easily damaged by static electricity, so the card should be left in its original packing until it is installed.

Unpacking and installation should be done on a grounded anti-static mat. The operator should be wearing an anti-static wristband, grounded at the same point as the anti-static mat.

Inspect the card carton for obvious damage. Shipping and handling may cause damage to your card. Be sure there are no shipping and handling damages on the card before proceeding.

❗ **DO NOT APPLY POWER TO YOUR SYSTEM IF IT HAS BEEN DAMAGED ON THE CARD.**

❗ **In order to ensure your graphics card working correctly, please use official Gigabyte BIOS only. Use none official Gigabyte BIOS might cause problem on the graphics card.**

## 2.2. Hardware installation

Installing Your graphics card.

Now that you have prepared your computer, you are ready to install your graphics accelerator card.

**To remove the existing graphics card:**

1. Power off the computer and monitor, then disconnect the display cable from the back of your computer.

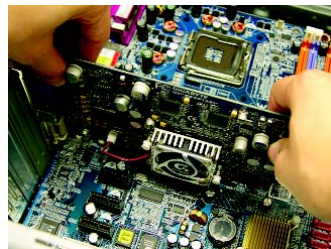


2. Remove the computer cover. If necessary, consult your computer's manual for help in removing the cover.



3. Remove any existing graphics card from your computer.

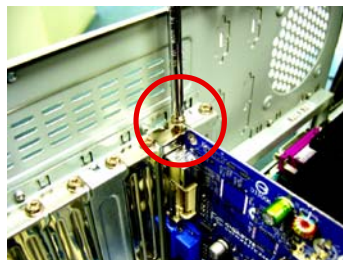
Or, if your computer has any on-board graphics capability, you may need to disable it on the motherboard. For more information, please see your computer documentation.





## To install your new graphics card:

1. Locate the PCI Express x 16 slot. If necessary, remove the metal cover from this slot; then align your graphics card with the PCI Express x 16 slot, and press it in firmly until the card is fully seated.
2. Replace the screw to fasten the card in place, and replace the computer cover.



3. Plug the display cable into your graphics card; then turn on the computer and monitor. To connect a flat panel directly to your graphics card, use the DVI-I connector. To connect a VGA monitor to the DVI-I connector, plug the DVI-I to D-sub adapter into the DVI-I connector, then plug the monitor cable into the adapter.



Connect a flat panel



To Flat Panel Display



To TV or VCR



### Warning!

To avoid system instability, do not touch the graphics card when it is running.

You are now ready to proceed with the installation of the graphics card driver. Please refer to next chapter for detailed instructions.

## 3. Software Installation

In this manual, we assume that your CD-ROM Drive letter to be Drive D:

The installation of Win® 2000 / Win® XP drivers is very simple. When you insert the driver CD into your CD-ROM drive, you can see the AUTORUN window (if it does not show up, run "D:\setup.exe"). Then you can follow the guides to setup your graphics card driver. (Please follow the subsection 3.1.3 "Driver installation" to install the driver for your graphics accelerator.)

### **3.1. Win® XP driver and utilities installation**

#### **3.1.1. Operating system requirement**

- When loading the graphics card drivers for the system, please make sure your system has installed DirectX 9.0C or later version.
- If you install the graphics card drivers for the motherboard, which consist of SIS or VIA chipsets, please install the appropriate driver program for that motherboard. Or please contact your motherboard nearest dealer for motherboard driver.

### 3.1.2. DirectX installation

Install Microsoft DirectX to enable 3D hardware acceleration support for Windows® 2000 or Windows® XP to achieve better 3D performance.

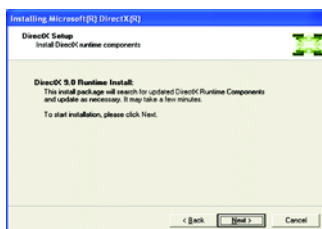
- Note: For software MPEG support in Windows® 2000 or Windows® XP, you must install DirectX first. Users who run Windows XP with Service Pack 2 or above do not need to install DirectX separately.



Step 1. When autorun window show up, click **Install DirectX 9** item.

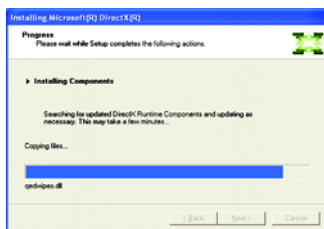


Step 2. Choose **I accept the agreement** and Click **"Next"** button.

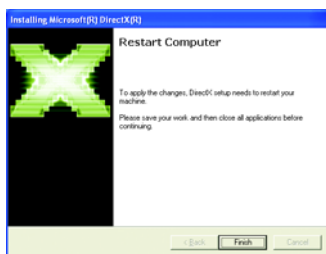


Step 3. Click **"Next"** button.





Installing the components.



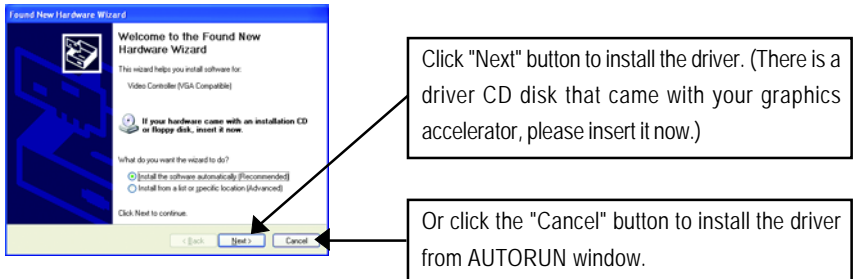
Step 4. Click "Finish" to restart computer.  
Then the DirectX 9 installation is completed.

### 3.1.3. Driver installation

#### A. New hardware found

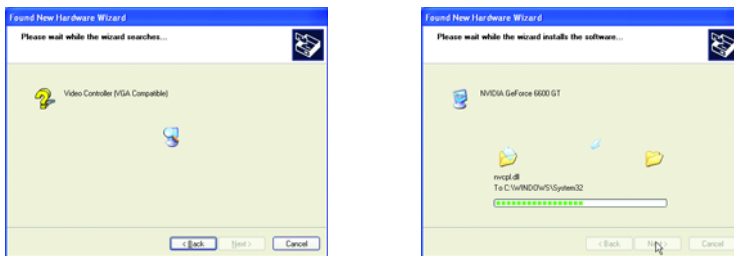
After the graphics card is inserted into your computer at the first time, the windows will automatically detect a new hardware in the system and pop out a "New Hardware Found" message. The following is the step-by-step installation guide.

#### Step 1: Found new hardware wizard: Video controller (VGA Compatible)



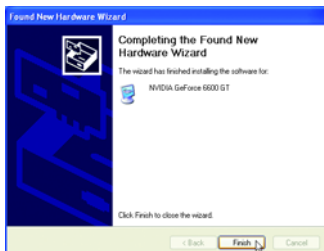
#### Step 2: Found new hardware wizard: Searching and installing

The wizard will search for the driver and install it automatically.



#### Step 3: Found new hardware wizard: Finish

Click the "Finish" button to finish the installation.



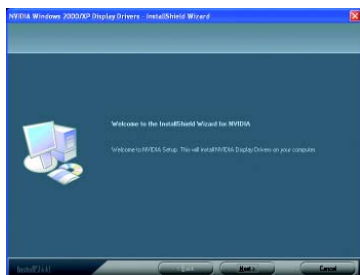
## B. Driver installation (Autorun Window)

Insert the driver CD disk into your CD-ROM, and then you can see the AUTORUN window. If it does not show up, please run "D:\setup.exe".

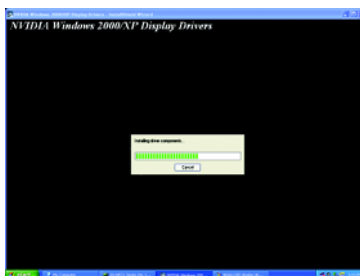


Step 1. When autorun window show up, click **Install Display Driver** item.

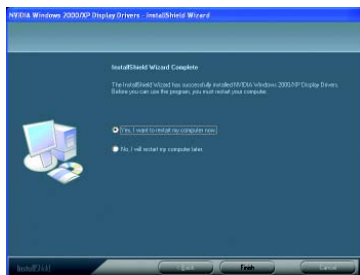
Click "Install Display Driver" item.



Step 2. Click "Next" button.



Windows installings the components.



Step 3. Click "Finish" button to restart computer. Then the driver installation is completed.

### 3.1.4. Utilities on driver CD

Insert the driver CD disk into your CD-ROM, and then you can see the AUTORUN window. If it does not show up, please run "D:\setup.exe".

- Install V-Tuner 2:



Step 1. Click "Utilities" item.



Step 2. Click "GIGABYTE Utility" item.



Step 3. Click "Next" button.



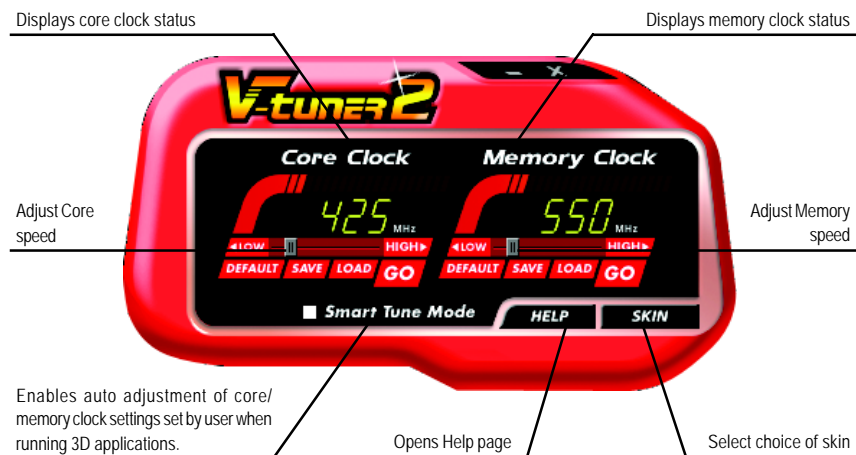
Step 4. Enter your name and company.



Step 5. Click "Finish" button to restart computer.  
Then the V-Tuner2 installation is completed.


## V-Tuner 2

V-Tuner 2 lets you adjust the working frequency of the graphic engine and video memory (Core Clock and Memory Clock).





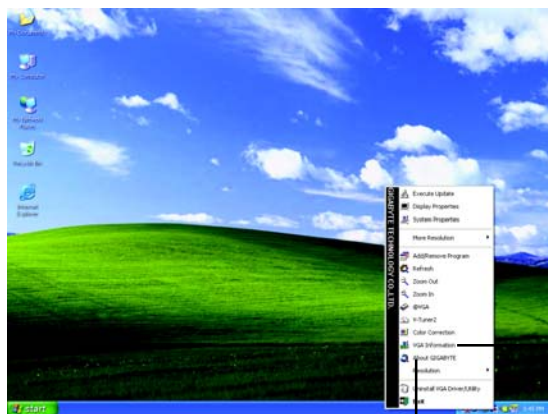
### 3.1.5. Taskbar icon

After installation of the display drivers, you will find a GIGABYTE icon  on the taskbar's status area. Right-clicking this icon opens the GIGABYTE control panel, showing a menu composed of shortcut of the graphics card's enhanced and other functions.

You may click the "Display Properties" item, and then click Settings. Click "Advanced" after clicking Settings. Click the appropriate tab to change your display settings.



Right click the icon.

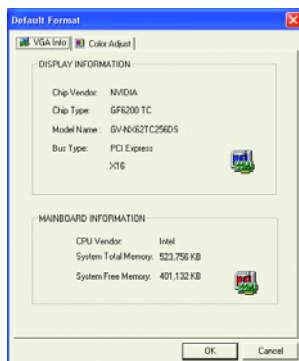


Click "VGA Information" item into the "VGA Info" and "Color Adjust" tabs.

You can link to GIGABYTE website for updated information about the graphics accelerator, latest drivers, and other information.

## VGA Information


VGA Info lists the relevant information about your card.



## Color Adjust

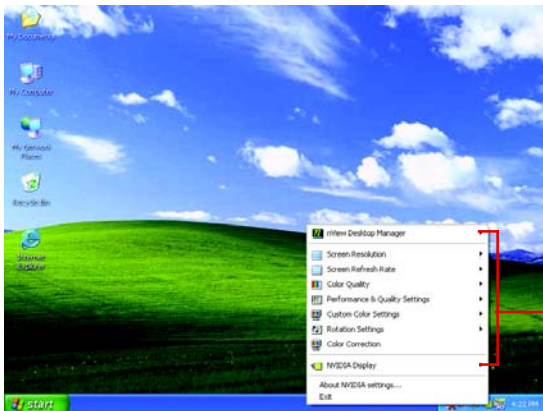
Color Adjust allows you to make color adjustments, such as brightness, contrast and gamma values for each or all of RGB colors.



After installation of the display drivers, you will find a NVIDIA icon  on the taskbar's status area. Click this icon to open the control panel.



Right click the icon.



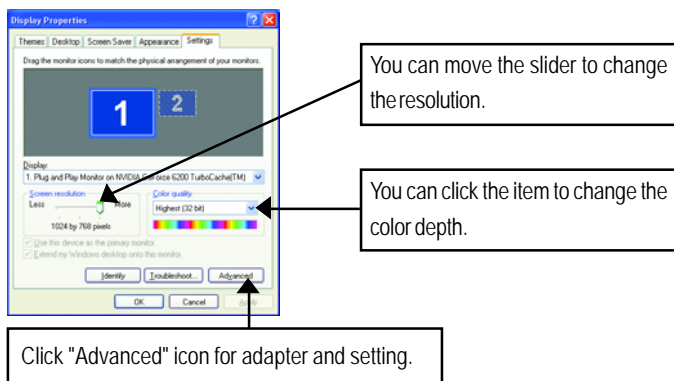
You can adjust the properties of the graphics accelerator from here.

### 3.1.6. Display Properties pages

To access Display Properties pages, right-click the GBT icon on the taskbar and select **Display Properties** or right-click on Desktop and then select **Properties**. The **Display Properties** dialog box shows the information of display adapter, color, the range of display area, and the refresh rate.

#### Settings (Resolutions and Color depth for Windows)

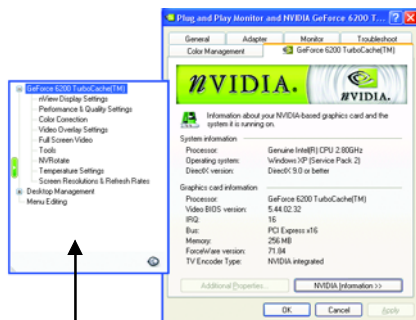
You may adjust the screen resolution and color quality settings in this dialog box.



To access more advanced options, click the "Advanced" button.

#### GeForce 6200 TurboCache(TM) properties

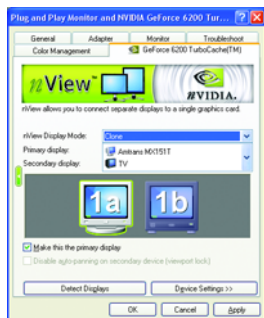
After pressing the "Advanced" button in Settings, you'll see the **Plug and Play Monitor and NVIDIA GeForce 6200 TurboCache(TM) Properties** dialog box. Click the **GeForce 6200 TurboCache(TM)** tab. (You can also click the Nvidia icon on the taskbar and select **Nvidia Display** to access the Geforce 6200 TurboCache(TM) properties page.)



This page shows the Adapter, System and Driver version information.

You can select other properties from the pop-out menu.

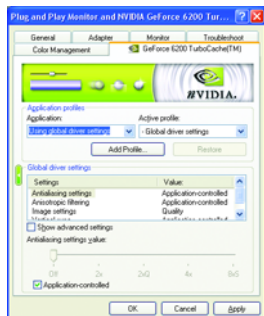
## nView Display Settings properties



- nView allows you to connect separate displays to single graphics card.
  - nView display modes: select your preferred nView display modes here. Options: Single display/ Clone / Horizontal span / Vertical span/ Dualview
  - Display pair: select a single display or display pair. The selected display combination will appear in the graphical representation below.
- If TV is chosen as the display, you will need to select the proper TV format. To do this, click "Device Setting" followed by "Select TV format". Select the format for your television and then click "Apply" followed by "OK".

Display	Model	GV-NX62TC256DS
Matrix	CRT+TV	Yes
	CRT+DVI	Yes
	DVI+TV	Yes

## Performance & Quality Settings properties



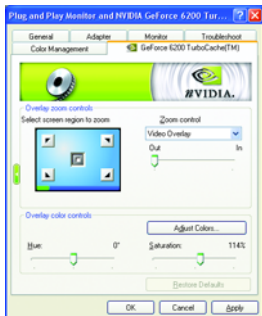
- The sliders lets to decide whether your application should use quality or high performance texture.
  - Application profiles: Select the application profile from the list of profiles.
  - Global Driver Settings: Select the Settings item and move the slider below to set the degree of antialiasing to be used in Direct3D and OpenGL applications.
  - Antialiasing settings: allows to set the degree of the Global Driver Settings.

## Color Correction properties



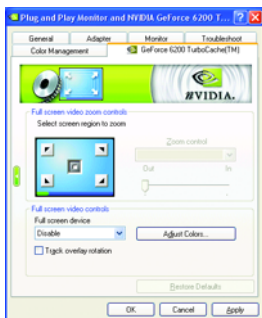
- The Color Correction Properties is used to compensate for variations in luminance between a source image and its output on a display device. Adjust the color correction settings to provide more accurate color reproduction of images (such as photographs) on your display device. Also, many 3D-accelerated games may appear too dark to play. Increasing the brightness and/or the gamma value equally across all channels makes these games appear brighter and more playable.

## Video Overlay Settings properties



- The **Overlay Controls Properties** can adjust Overlay zoom controls and Overlay color controls. There is only one video overlay, which is only available on the **Primary** display. The video overlay controls are automatically activated during playback of any video file type that supports overlay adjustments. The "Adjust Colors" button will access "Color Correction" properties page.

## Full Screen Video properties



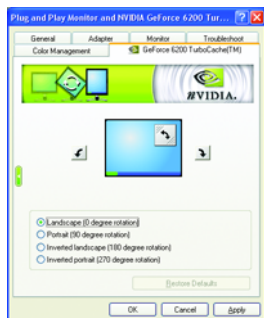
- The **Full Screen Video Properties** can adjust the display to full screen mode when video is being played.

## Tools properties



- The NVIDIA settings taskbar utility lets you conveniently access various features and presets you've configured in the Display Properties directly from the Windows taskbar.
  - **Shortcut tools:**  
Enabling these options will give you quick access to NVIDIA features.
  - **Display Optimization:**  
Run the Display Optimization Wizard to adjust your display(s) for optimal viewing and representation of colors .
  - **Troubleshooting:**  
If you have a TV connected and it is not being detected, select the check box below.

## NV Rotate properties



- The **NV Rotate Properties** is used to rotate the screen. If your monitor is capable of operating in either Landscape or Portrait mode, you can adjust the screen by this properties.

- Landscape (0 degree rotation)
- Portrait (90 degree rotation)
- Inverted Landscape (180 degree rotation)
- Inverted Portrait (270 degree rotation)

## Temperature Settings properties



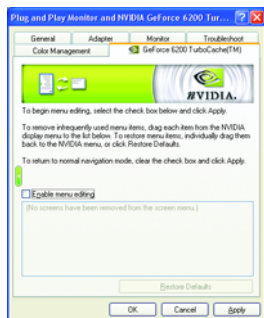
- The **Temperature Properties** can auto detected the GPU Core temperature. You can select the **Notify when GPU core temperature exceeds threshold** check box.

## Screen Resolutions & Refresh Rates properties



- The **Screen Resolutions & Refresh Rates properties** allows you to adjust the screen resolution, color quality and monitor settings (screen refresh rates). Or you can customize resolutions and refresh rates.

## Menu Editing properties



- The **Menu Editing Properties** can remove infrequently used screens by dragging them from the screen menu to the list below. Restore screens to the menu by dragging them individually, or click **Restore Defaults**.

To begin, check the **Enable screen menu editing** check box.

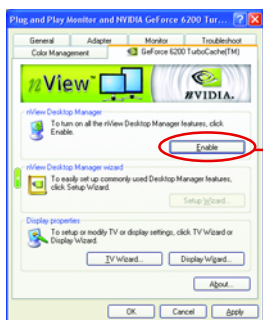
To return to normal navigation mode, uncheck the check box.

### 3.1.7. nView properties pages

**nView** is a set of desktop tools designed to help you be more productive when using your graphics card. With **nView** you can set up multiple desktops to work with your applications. Multiple desktops give you extra desktop areas on which to run your applications so you won't have to crowd several open application windows on one desktop.

#### Enable the nView Desktop Manager features:


Right-click on desktop and choose Properties\Settings\Advanced\GeForce 6200\Desktop Management



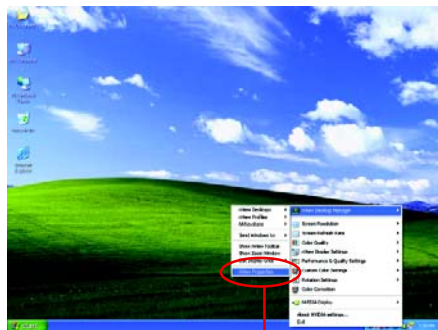
Click **Enable** button to turn on all the **nView Desktop Manager** features.



## Access nView properties page:

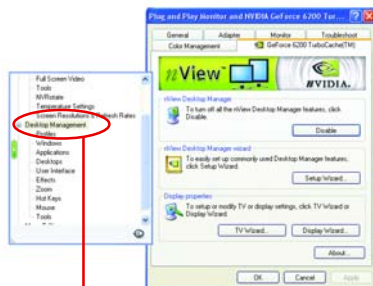
To access the **nView** properties page, you can click the **NVIDIA** icon  on the taskbar and select **nView Properties** under **nView Desktop Manager** (Method A). Or right-click on Desktop, select Properties/Settings/Advanced/Geforce 6200 TurboCache(TM). Double-click **Desktop Management** item on the pop-up menu (Method B).

### Method A:



Click the item to start nView Properties.

### Method B:



Double-click Desktop Management to see more nView properties.

## nView Desktop Management properties



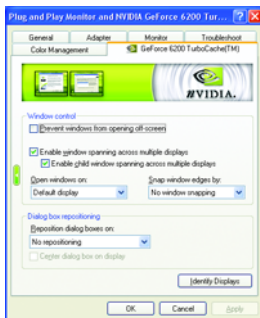
- This tab contains information about the nView Desktop Manager. The setup wizard can also be accessed from this tab.

## nView Profile properties



- This tab contains a record all nView display settings for easy software setup.

## nView Windows properties



- This tab allows you to control of window and dialog box placement when using multiple monitors.

## nView Applications properties



- This tab allows you to control nView settings depending on different applications.

## nView Desktops properties



- This tab allows you to create up to 32 unique desktops.

## nView User Interface properties



- This tab allows customization of the nView user interface.

## nView Effects properties



- This tab provides special windows effects that you can apply to your applications.

## nView Zoom properties



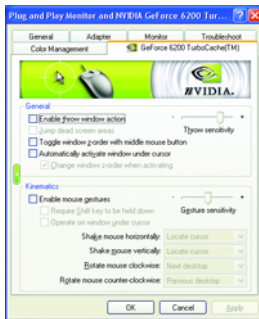
- This tab provides dynamic zoom functionality on the desktop. Also enables full screen video playback via the video mirroring control button.

## nView Hot Keys properties



- This tab lets you perform various actions with shortcut keys or key combinations.

## nView Mouse properties



- This tab can modify and extend mouse behavior with kinematic actions.

## nView Tools properties



- This tab can improve nView functionality for mobile and desktop users.

### 3.2. Win® 2000 driver installation

With Windows running on your computer, you need to install the graphics card driver to take advantage of the higher performance, resolutions, and special graphics features of the graphics card. To ensure you install the latest driver, insert the Installation CD that shipped with your graphics card.

To install the graphics card driver for Win® 2000, please insert the Installation CD. Then the AUTORUN window will show up. Click **Install Display Driver** item, and follow the wizard to install the driver.

If Windows® does not show the CD automatically, please run following steps:

1. Click the Start button on the control bar.
2. Select Run.
3. Type the following: D:\SETUP.exe  
(If D is not your CD-ROM drive, substitute D with the correct drive letter.)
4. Click "OK".
5. Click on "Install Display Drivers" to begin the Installation Wizard.
6. Click "Next".
7. Click "Yes" to the license agreement.
8. Follow the Wizard's on-screen instructions to complete the installation.



Please make sure the Windows® 2000 have installed Windows® 2000 Service Pack (or later) before installing the graphics accelerator driver.

## 4. Troubleshooting Tips

The following troubleshooting tips may help if you experience problems. Contact your dealer or GBT for more advanced troubleshooting information.

- Check that the card is seated properly in the PCI Express x 16 slot.
- Ensure that the display cable is securely fastened to the card's display connector.
- Make sure that the monitor and computer are plugged in and receiving power.
- If necessary, disable any built-in graphics capabilities on your motherboard. For more information, consult your computer's manual or manufacturer.

(NOTE: Some manufacturers do not allow the built-in graphics to be disabled or to become the secondary display.)

- Make sure you selected the appropriate display device and graphics card when you installed the graphics driver.
- Restart your computer.  
Press the F8 key on your keyboard after system starts up. When the Windows Advanced Options Menu appears, select Safe Mode and press Enter.  
After getting into Safe Mode, in Device Manager check whether the driver for the graphics card is correct.
- For more assistance, use the Troubleshooting Guide located in the Windows® Help or contact your computer manufacturer.



If necessary, adjust your monitor's setting by monitor's adjust panel to make the screen looks focused, crisp, and sharp. (Please refer to the monitor's manual.)


## 5. Appendix

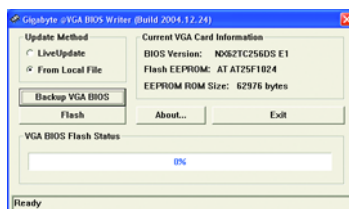
### 5.1. How to Reflash the BIOS

#### 5.1.1. Reflash BIOS in MS-DOS mode

1. Extract the downloaded Zip file to your hard disk(s) or floppy disk. This procedure assumes drive A.
2. Restart the computer in MS-DOS mode. (For Windows 2000/XP, you need a startup disk to restart the computer in MS-DOS mode.)
3. Change the command prompt to A:\>.
4. To back up the current BIOS, at the A:\> prompt, type [BIOS flash utility name] -s [BIOS file name] (example: gvf11 -s nx66t128d.f1) and press Enter.
5. To flash BIOS, at the A:\> prompt, type [BIOS flash utility name] -p [BIOS file name] (example: gvf11 -p nx66t128d.f2) and press Enter.
6. Wait until it's done, then restart your computer.

#### 5.1.2. Reflash BIOS in Windows mode

1. After installing the display drivers, you will find a GIGABYTE  icon in the lower-right corner of the Taskbar. Right-click to select the @VGA utility.



@VGA flash BIOS utility.

2. Update BIOS through the Internet
  - a. Select the **Live Update** check box and click **Flash**. Then @VGA will automatically download the BIOS for your card from GIGABYTE @VGA server and do the update for you. (@VGA will not download/update the BIOS if it detects the current BIOS on your card is the latest one.)
3. Update BIOS NOT through the Internet
  - a. Download the BIOS ZIP file for your card from GIGABYTE website and extract it to your hard disk (or floppy disk).
  - b. Select the **From Local File** check box and then click **Flash**.
  - c. Select the BIOS file from your hard disk (or floppy disk).
  - d. Complete the update procedure following the on-screen instructions.

## 5.2. Resolutions and Color Depth Table (In Windows® XP)

GeForce 6200 TurboCache(TM) Single Display Standard Modes

Display Screen Resolution	Refresh Rate (Hz)	Color Depth (bpp) 8bpp(256 color) Standard mode	16bpp(65K color) High mode	32bpp(16.7M) True mode
320 x 200	60-75	✓	✓	✓
320 x 240	60-75	✓	✓	✓
400 x 300	60-75	✓	✓	✓
480 x 360	60-75	✓	✓	✓
512 x 384	60-75	✓	✓	✓
640 x 400	60-75	✓	✓	✓
640 x 480	60-240	✓	✓	✓
720 x 480	60	✓	✓	✓
720 x 576	60	✓	✓	✓
800 x 600	60-240	✓	✓	✓
848 x 480	60-240	✓	✓	✓
960 x 600	60-240	✓	✓	✓
1024 x 768	60-200	✓	✓	✓
	240	✓	✓	X
1088 x 612	60-200	✓	✓	✓
	240	✓	✓	X
1152 x 864	60-170	✓	✓	✓
	200	✓	✓	X
1280 x 720	60-150	✓	✓	✓
	170	✓	✓	X
1280 x 768	60-150	✓	✓	✓
	170	✓	✓	X
1280 x 960	60-150	✓	✓	✓
	170	✓	✓	X
1280 x 1024	60-150	✓	✓	✓
	170	✓	✓	X
1360 x 768	60-150	✓	✓	✓
	170	✓	✓	X
1600 x 900	60-120	✓	✓	✓
	140-150	✓	✓	X
1600 x 1024	60-100	✓	✓	✓
	120	✓	✓	X

To be continued...



Display Screen Resolution	Refresh Rate (Hz)	Color Depth (bpp)		
		8bpp(256 color) Standard mode	16bpp (65K color) High mode	32bpp (16.7M) True mode
1600 x 1200	60~100	✓	✓	✓
	120	✓	✓	X
1920 x 1080	30~85	✓	✓	✓
	100	✓	✓	X
1920 x 1200	60~85	✓	✓	✓
	100	✓	✓	X
1920 x 1440	60~85	✓	✓	✓
2048 x 1536	60~85	✓	✓	✓

\* This table is for reference only. The actual resolutions supported depend on the monitor you use.



# GV-NX62TC256DS

GeForce™ 6200 顯示卡

## 中文使用手冊

Rev. 101

### 版權

© 2005 GIGABYTE TECHNOLOGY CO., LTD

GIGA-BYTE TECHNOLOGY CO., LTD. ("GBT") 版權所有,未經 GBT 書面許可,不得以任何形式複製或散播本手冊的任何內容。

### 商標

本手冊所有提及之商標與名稱皆屬該公司所有。

### 注意事項

顯示卡上的任何貼紙請勿自行撕毀,否則會影響到產品保固期限的認定標準。

在科技迅速的發展下,此發行手冊中的一些規格可能有過時不適用的敘述,敬請見諒。

在此不擔保本手冊無任何疏忽或錯誤亦不排除會再更新發行。手冊若有任何內容修改,恕不另行通知。

# 目錄

1. 簡介 .....	3
1.1. 主要特性 .....	3
1.2. 系統需求 .....	3
2. 硬體安裝 .....	4
2.1. 顯示卡的元件配置圖 .....	4
2.2. 硬體安裝 .....	6
3. 安裝驅動程式 .....	8
3.1. 安裝 Win® XP 的驅動程式 .....	8
3.1.1. 操作系統的基本需求 .....	8
3.1.2. 安裝 DirectX .....	9
3.1.3. 安裝驅動程式 .....	11
3.1.4. 驅動程式光碟之附屬公用程式 .....	13
3.1.5. 工作列命令圖示 .....	15
3.1.6. 顯示器內容設定 .....	18
3.1.7. nView 內容設定 .....	22
3.2. 安裝 Win® 2000 驅動程式 .....	27
4. 疑難排除與要訣 .....	28
5. 附錄 .....	29
5.1. 如何更新您顯示卡的 BIOS .....	29
5.1.1. 以 DOS 指令更新 BIOS .....	29
5.1.2. 以 @VGA 更新 BIOS .....	29
5.2. 解析度與色彩對照表（在 Windows XP 下） .....	30

# 1. 簡介

## 1.1. 主要特性

- 此系列顯示卡為使用 NVIDIA Turbo Cache 技術，一種透過與分享系統記憶體的方式來提高顯示卡的執行效能，實際有效之繪圖記憶體依系統記憶體之不同，而有所差異。詳見下表：

系統記憶體	256 MB	512 MB 或更高
顯示卡內建記憶體	64 MB	64 MB
系統記憶體分享	64 MB	192 MB
實際有效之繪圖記憶體	128 MB	256 MB

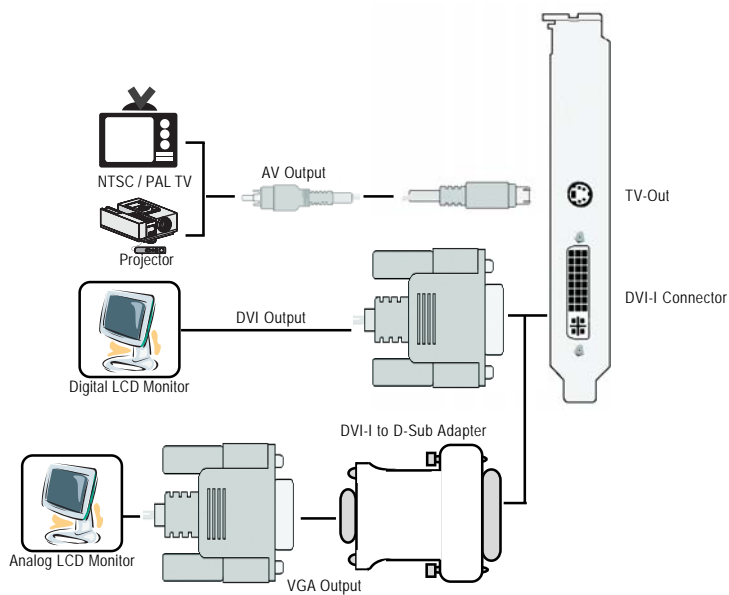
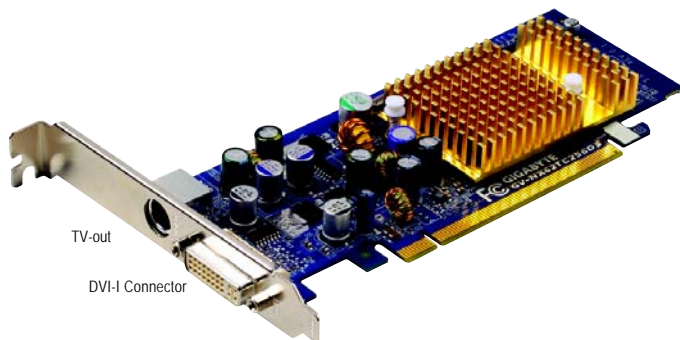
- 採用 NVIDIA® GeForce™ 6200 TurboCache 視覺處理晶片核心技術 (GPU)
- 支援最新 PCI Express x 16 規格
- 支援 DirectX 9.0c
- 支援 AV、S-Video 和 HDTV 輸出
- 支援 D-Sub(必須使用轉接頭才有此功能)和 DVI-I 數位介面輸出

## 1.2. 系統需求

- IBM 或 100% PC 相容之 Intel Pentium® III 650MHz 或 AMD Athlon 650MHz 以上的處理器
- 支援 PCI Express x 16 插槽
- Win® 2000 / Win® XP 作業系統
- 256MB 以上的記憶體
- 50MB 以上的可用硬碟空間
- CD-ROM 或 DVD-ROM 光碟機
- 支援 PCI Express 主機板及品質好的大瓦數電源供應器

## 2. 硬體安裝

### 2.1. 顯示卡的元件配置圖





## 警告！

此顯示卡由許多精密的積體電路及其他元件所構成，這些積體電路很容易因為遭到靜電影響而損壞。所以請在正式安裝前，做好下列準備：

1. 請將電腦的電源關閉，並且拔除電源插頭。
2. 拿取顯示卡時請儘量避免觸碰金屬接線部份，最好能夠戴上有防靜電手環。
3. 在顯示卡未安裝前，需將元件置放在靜電墊或防靜電袋內。

請注意，顯示卡上有許多敏感的電子元件很容易因為接觸到靜電而損壞，所以除非您要開始安裝顯示卡，否則儘可能不要將顯示卡從防靜電袋中取出。

欲從防靜電袋中取出或安裝顯示卡時，必須在已接地的防靜電墊上。安裝人員必須手戴靜電護腕，並且與防靜電墊在同一點接地。裝載運輸過程中，容易造成損壞。安裝前請先檢查顯示卡的包裝袋是否有明顯的損壞，確認無誤後再行安裝。

⚡ 注意：如發現顯示卡有明顯損壞，請勿接上電源！

⚡ 如欲更改 BIOS 版本，請使用技嘉科技所發出的正式 BIOS，使用非技嘉科技之 BIOS，可能導致 VGA 工作或畫面異常。

## 2.2. 硬體安裝

準備好您的電腦及顯示卡，  
開始安裝您的顯示卡：

移除舊有的顯示卡：

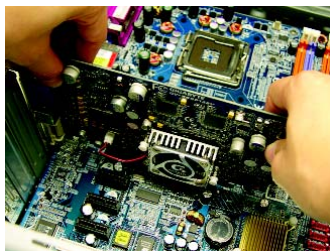
1. 先將電腦的電源關掉，並將電腦上的螢幕連接線拔除。



2. 將您電腦外殼拆除，並且讓自己保持接地(為了使人體不帶電，以防止靜電傷害電腦設備)，必要時請參考系統操作手冊進行電腦的拆卸。



3. 從機殼上移除擴充擋板及螺絲，如果您的機器上有其他的顯示卡，請將其移除。





### 安裝新的顯示卡：

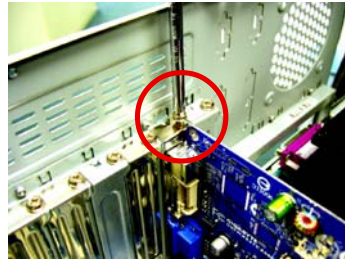
1. 從防靜電的包裝袋中將您的顯示卡拿出來。

將顯示卡很小心並且很確實的插入 PCI Express x 16 插槽中。

\* 請務必確認顯示卡上的金屬接點有很確實的與插槽接觸在一起。



2. 將螺絲鎖上使顯示卡能確實的固定在機殼上，並將電腦的外殼重新裝上。



3. 您可以連接有 DVI 功能的螢幕，或是使用 DVI-I 轉 D-sub 轉接頭連接 15-pin 的 VGA 螢幕。



連接 DVI 螢幕的排線



### 注意!

當顯示卡開始運作後，切勿觸摸顯示卡，以免造成系統不穩定。

重新開啟系統電源。

恭喜您，您已完成硬體安裝的工作了！接著您只要把顯示卡的驅動程式安裝在您的作業系統上，就可以使用它了。

## 3. 安裝驅動程式

在此我們假設您系統上的 CD-ROM 磁碟代號是 D：

在 Windows® 2000 或 Windows® XP 安裝驅動程式是一件很簡單的事。當您將我們所附的驅動程式光碟片放入您的光碟機時，您將會看到我們所為您設計的 AUTORUN 畫面，如果您的系統未能出現這個畫面，您可以執行 "D:\setup.exe"，如此就可以看到這個畫面了。接著您只要依照 AUTORUN 畫面的指示，就可以很輕鬆的完成安裝驅動程式。（您可以依照 3.1.3 節 "安裝驅動程式" 的步驟，將驅動程式一步一步安裝起來。）

### 3.1. 安裝 Win® XP 的驅動程式

#### 3.1.1. 操作系統的基本需求

- 在安裝顯示卡的驅動程式前，請先確認您的作業系統內是否已安裝 DirectX 9C (或更新的版本) 程式。
- 如果您安裝顯示卡的主機板並非使用 Intel 晶片組 (即 SIS 或是 VIA 晶片的主機板)，請注意下列事項：
  1. 先仔細閱讀該主機板廠商所附之說明書。
  2. 確認主機板已安裝驅動程式，該驅動程式請洽主機板製造商。

### 3.1.2. 安裝 DirectX

安裝 Microsoft DirectX 可充分運用 3D 繪圖晶片硬體的加速功能以促使 Windows® 2000/XP 達到更好的 3D 效能。

- 在 Windows® 2000 / XP 系統下您必須先安裝 DirectX，才能支援軟體 MPEG 播放功能。如果您的作業系統是 Windows XP SP2 以上的版本(含 SP2)，則不需要另外安裝 DirectX。



步驟1：按下"安裝 DirectX 9"選項。

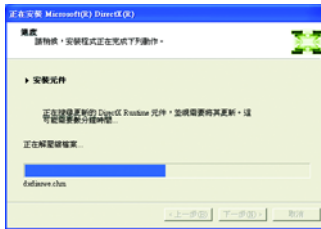
選擇"安裝 DirectX 9"選項。



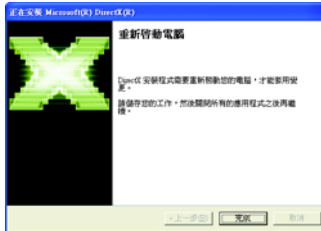
步驟2：選擇我接受合約後按"下一步"繼續下一個步驟。



步驟3：按"下一步"按鈕。



正在安裝所需的元件。



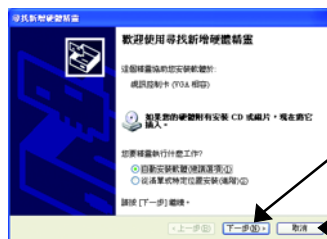
步驟4：按"完成"重新啟動電腦，DirectX 已安裝完成。

### 3.1.3. 安裝驅動程式

#### A. 尋找新的硬體設備：

首先把顯示卡插入 PCI Express x 16 插槽內，之後 Windows 將會自動地搜尋新的硬體設備並且會跳出一個 "找到新硬體" 的對話框。

步驟 1：尋找新增硬體精靈：視訊控制卡(VGA 相容)



按 " 下一步 " Windows 會自動搜尋光碟片中的驅動程式。(請在此時將隨貨附贈的驅動程式光碟片插入光碟機中)

或是按 " 取消 "，由 AUTORUN 的畫面來安裝驅動程式。

步驟 2：尋找新增硬體精靈：搜尋及安裝

安裝精靈會自動搜尋及安裝驅動式。



步驟 3：尋找新增硬體精靈：完成

按下 " 完成 " 鍵，即完成驅動程式的安裝。



## B. 安裝驅動程式(AUTORUN 畫面)：

請將我們所附的驅動程式安裝光碟片放入您的光碟機中，接著您將會看到我們所為您設計的 AUTORUN 畫面。如果沒有出現這個畫面，您只要執行 "D:\setup.exe" 就可以看到這個畫面了。

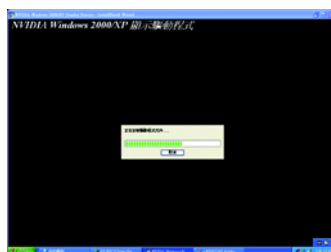


步驟1：按"顯示卡驅動程式"選項。

選擇"顯示卡驅動程式"選項。



步驟2：按下"下一步"鍵。



正在安裝驅動程式的元件。



步驟3：按"完成"重新啟動電腦，驅動程式已安裝完成。

### 3.1.4. 驅動程式光碟之附屬公用程式

請將我們所附的驅動程式安裝光碟片放入您的光碟機中，接著您將會看到我們所為您設計的 AUTORUN 畫面。如果沒有出現這個畫面，您只要執行 "D:\setup.exe" 就可以看到這個畫面了。

- 安裝 V-Tuner 2：



步驟 1：選擇 "工具程式" 選項。



步驟 2：選擇 "GIGABYTE Utility" 選項。



步驟 3：按下 "Next" 鍵。



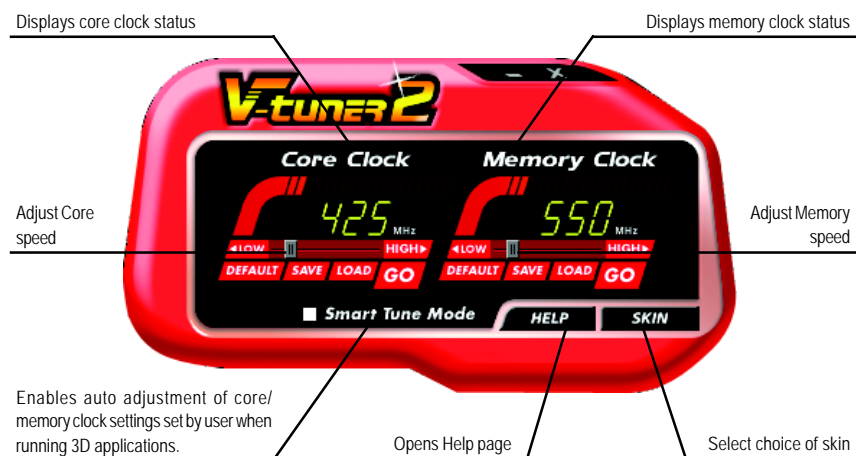
步驟 4：輸入您的姓名及公司名。



步驟 5：按 "Finish" 重新啟動電腦，  
GIGABYTE Utility 已安裝完成。

## V-Tuner 2


V-Tuner 2提供調整顯示卡引擎與記憶體工作頻率(Core Clock及Memory Clock)的功能。





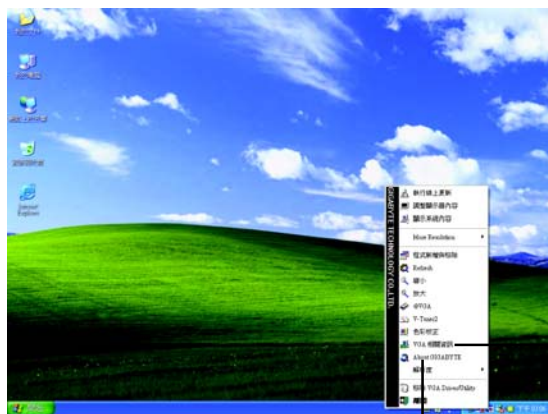
### 3.1.5. 工作列命令圖示

技嘉控制面板

在您安裝完顯示卡驅動程式並重新開機後，您將可以在Windows工作命令列區找到技嘉的小圖示。在圖示上按下滑鼠右鍵可以打開技嘉控制面板選單。在此選單中您可以選擇改變螢幕解析度、更新頻率、縮小或放大螢幕，色彩校對或使用 V-Tuner 2 功能監控系統狀態。您也可以選擇"調整顯示器內容"，選取"設定"標籤頁，再按下"進階"鍵做相關的顯示狀態設定。



按右鍵



按下"VGA 相關資訊"選項進入"VGA Info"及"Color Adjust"標籤頁。

您可以按下技嘉網頁的超連結，利用網路瀏覽器連結到技嘉網站查詢最新產品資訊和下載最新版本的驅動程式。

## VGA Info


VGA Info 標籤頁顯示此顯示卡的相關資訊，像是顯示卡使用的顯示晶片、型號、速度等。



## Color Adjust

Color Adjust 標籤頁提供顏色校正的功能，像是RGB每個顏色的亮度，對比及Gamma值調整。



在安裝完驅動程式後，您將可以在工作命令列區找到NVIDIA圖示，按此圖示打開 NVIDIA 控制面板。

NVIDIA 的捷徑圖示可以提供各種程式、顯示器設定值、以及 "nView" 的立即存取。



按右鍵



您可以由此進入調整顯示卡的相關設定。

### 3.1.6. 顯示器內容設定

在桌面按滑鼠右鍵後選擇"內容"或在工作命令列的技嘉小圖示上按右鍵選擇"調整顯示器內容"即可看到顯示內容畫面。顯示內容頁提供顯示卡、螢幕解析度、色彩品質等資訊。

#### 設定螢幕解析度及色彩品質

進入"顯示內容"頁面後，若您要調整螢幕解析度及色彩品質，或是想做更細部顯示功能設定，可以選擇"設定值"項目。



你可以移動這個調整器來改變解析度的大小。

你可以藉由改變這個視窗來改變色彩的層次深度(color depth)。

要設定顯示卡及繪圖晶片，請選擇"進階"按鈕。

#### GeForce 6200 TurboCache(TM)設定頁

進入"設定值"進階選單後，可以看到"隨插即用監視器和 NVIDIA GeForce 6200 TurboCache(TM)內容"選單，請選擇"GeForce 6200 TurboCache(TM)"項目進入GeForce 6200 TurboCache(TM)設定畫面。(您亦可點選桌面工作命令列區的NVIDIA圖示，並選擇"NVIDIA 顯示器"開啟 GeForce 6200 TurboCache(TM)設定頁。)



此選項設定頁顯示介面卡、系統及驅動程式版本等相關資訊。

在此選擇其他的設定頁。

## nView 顯示設定值設定頁



■ 此設定頁可以容許您將兩個獨立的輸出裝置(類比顯示器、數位顯示器或電視)連接至一張圖形卡。

- nView模式：依照您實際需求的輸出模式選擇：單一顯示器，仿製，水平擴展，垂直擴展或雙同步顯示(Dual View)。
- 顯示配對：選取單一顯示器或配對顯示器。選定的組合會顯示在下方的圖示中。

附註：若您選擇電視輸出，請至[裝置設定值]依照您的電視規格選擇[輸出裝置]。並按下[套用]及[確定]鍵，確認變更。

Display Matrix	Model	GV-NX62TC256DS
	CRT+TV	Yes
	CRT+DVI	Yes
	DVI+TV	Yes

## 效能 & 品質設定頁



■ 此設定頁讓您決定在應用程式中應表現高效能或是高品質。

- 應用程式設定檔：從設定檔清單中選取一個應用程式設定檔。
- 廣域驅動程式設定值：點選設定值內的項目，再從下方的滑桿來設定用於Direct3D與OpenGL應用程式中的平滑度或效能和品質設定值等。
- 平滑處理設定值：調整廣域驅動程式設定值內各選項的值。

## 色彩補正設定頁



■ 色彩補正設定可以調整來源影像與其輸出之間的光度差異，讓您在應用影像處理應用程式時能呈現出更精確的影像色彩。而且，有些3D加速功能的遊戲畫面都很暗，在所有頻道中增加相同亮度和 / 或 gamma 值可使這些遊戲畫面更亮些。

## 影像重疊設定值設定頁



- 此重疊色彩控制設定頁可以讓您對亮度，對比度，色相及飽和度做設定。您可以用來調整螢幕上的影像或 DVD 播放的品質。

## 全螢幕影像設定頁



- 此全螢幕影像設定頁可以讓您在播放影像時，調整成全螢幕影像模式。

## 工具設定頁



- NVIDIA 設定值工作列公用程式可讓您輕易地直接透過 Windows 工作列存取您在顯示器內容中組態的各種功能與預設值。
  - 快速鍵工具：  
啟用這些選項讓您可以快速存取 NVIDIA 功能。
  - 顯示器最佳化：  
執行「顯示器最佳化精靈」來調整顯示器以便獲得最佳的色彩檢視和呈現效果。
  - 故障排除：  
如果連接了一台電視但尚未被偵測到，請選取下方的核選方塊。

## 功能表編輯設定頁



- 您可以藉由此設定頁將不常使用的螢幕從 NVIDIA 螢幕功能表拖曳到下方的清單來移除這些螢幕。藉由分別拖曳移除的螢幕或是按一下「還原預設值」按鈕來將螢幕還原至功能表。若要開始，請勾選「啟用螢幕功能表編輯功能」核選方塊。若要返回正常的導覽模式，請取消勾選該核選方塊。

## 顯示方向設定頁



- 此設定頁可以讓您調整螢幕的顯示方向。若您的顯示器支援旋轉功能，您可以依旋轉的設定調整成您希望的顯示方向。
  - 橫向（0 度旋轉）
  - 縱向（90 度旋轉）
  - 反橫向（180 度旋轉）
  - 反縱向（270 度旋轉）

## 溫度設定頁



- 此溫度設定頁可以讓您監控 GPU 核心溫度，在超過設定溫度時發出警告。

## 螢幕解析度和更新處理速率設定頁



- 此設定頁可以讓您調整螢幕的解析度、色彩品質及螢幕重新整理速率等。

### 3.1.7. nView 內容設定

nView 是一組桌面工具，專為協助您更有效率地使用 NVIDIA 圖形處理器繪圖加速卡而設計。您可以使用 nView 設定多個桌面以與應用程式配合工作。多個桌面為您提供額外的桌面區域來執行應用程式，這樣您便無需在一個桌面上堆疊多個開啟的應用程式視窗。nView 還包括許多附加功能，讓您更有效地將多台顯示器與電腦配合使用。

#### 開啟 nView Desktop Manager 功能：


在桌面上按滑鼠右鍵選擇內容\設定值\進階\GeForce 6200\桌面管理



按下"啟用"鍵開啟 nView Desktop Manager 的功能



## 進入 nView 設定頁：

您可以在工作命令列以滑鼠指標點選 NVIDIA 圖示，並在 "nView Desktop Manager" 項目下選擇 "nView 內容" (方法 A)。或是在桌面按滑鼠右鍵選擇 "內容" 裡的 "設定值" 進階選單中來進入 GeForce 6200 TurboCache(TM) "桌面管理" 項目(方法 B)。

### 方法 A：



選擇「nView 內容」選項。

### 方法 B：



在「桌面管理」項目按兩下可看到更多 nView 功能。

## 桌面管理設定頁



- 此標籤包含有關 nView 桌面管理程式的資訊。也能由此標籤存取 "安裝精靈"。

## 設定檔設定頁



- 設定檔包含所有 nView 顯示設定值的記錄，以便輕易地設定軟體。

繁體中文



- 繁體中文

繁體中文



- 繁體中文

繁體中文



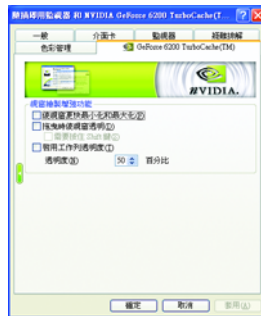
- 繁體中文

## 使用者介面設定頁



- 此設定頁讓您可以自訂 nView 使用者介面。

## 效果設定頁



- 此設定頁提供特別視窗效果，使用者可以套用至應用程式中。

## 縮放設定頁



- 此設定頁提供桌面上的動態縮放功能。也透過"影像鏡射控制"按鈕來啟用全螢幕影像播放。

## 快速鍵設定頁



- 此熱鍵設定可讓使用者以快捷鍵或按鍵組合來執行多種動作。

## 滑鼠設定頁



- 此工具設定頁能讓滑鼠依照人體工學動作修改並延伸滑鼠行為。

## 工具設定頁



- 此工具設定頁能改善nView的功能，以適合行動和桌面使用者。

### 3.2. 安裝 Win® 2000 驅動程式

要安裝顯示卡的驅動程式，請先將我們所附的驅動程式 CD 光碟放入光碟機中。AUTORUN 的程式會自動執行，選取 "顯示卡驅動程式" 選項並依安裝精靈的指示安裝驅動程式。

如果 AUTORUN 的程式沒有自動執行，請執行以下步驟：

1. 請按下電腦畫面左下角的 "開始" 鍵。
2. 選擇 "執行" 選項。
3. 在執行對話框中鍵入 "D:\SETUP.exe" (我們假設您的光碟機代號是 D)。
4. 按下 "OK"。
5. 之後，將會出現一個驅動程式選單畫面。請選 "顯示卡驅動程式" 項目進行驅動程式安裝。
6. 接著，請依照畫面提示進行安裝，並重新啟動系統。
7. 當系統重新啟動之後，系統會將顯示卡的模式定在初始的狀態，並且會出現 Display Properties 的畫面，請選擇 "OK"，並且將顯示卡設定調整到您最滿意的狀態，此時也代表了您已完成所有的安裝程序。



在安裝驅動程式前，請先確認您的 Windows® 2000 系統是否已經用 Windows® 2000 Service Pack (或更新版本)更新過了(這將確保您的作業系統能夠正常的使用顯示卡)。

## 4. 疑難排除與要訣

請參考以下說明協助您排除設備衝突或顯示卡安裝上的問題。若以下說明還無法解決您的問題，請洽購買的店家或經銷商尋求協助，或至本公司網站上的服務專區填寫您的問題，我們將盡快給您回覆。

- 檢查此顯示卡正確地安裝於 PCI Express x 16 擴充槽。
- 確認螢幕的 15 pin VGA 接頭確實的連接於顯示卡上的螢幕連接頭。
- 確認螢幕及電腦主機都有接上電源接頭。
- 假如需要去關閉任何主機板內建的顯示裝置，進一步的資訊請參考您的主機板使用手冊或洽購買的店家或經銷商尋求協助。(有一些主機板內建的顯示裝置無法讓您關閉或設為第二顯示裝置)
- 當您在安裝驅動程式時，確認您所選擇的欲安裝設備是正確的。
- 更多的疑難排除與要訣，請按滑鼠右鍵雙擊快捷列上的 Nvidia 圖示，獲得更多的資訊。
- 假如您在開機期間有問題發生，請將您的電腦設在安全模式。  
重新啟動電腦，啟動時按下鍵盤上的 F8 鍵。在[Windows 進階選項] 功能表出現時，選取安全模式，然後按下 ENTER。之後進入裝置管理員確認顯示器介面卡驅動程式是否正確。
- 如果您的桌上型電腦系統發生鎖定的問題：  
確定顯示卡的放置正確，並且是用正確的「控制台」"加入新的硬體"精靈所安裝的。請嘗試以 "安全模式" 啟動 Windows。  
在不同的系統嘗試使用顯示卡。如果顯示卡在別的系统可以作業的話，問題可能就是不正確的組態或硬體衝突所造成的。
- 如果您無法設定喜愛的顯示器色彩 / 解析度  
「設定值」頁上可供使用的色彩深度和螢幕解析度 組合要視安裝的圖形加速器的功能而定。



若您的顯示器出現水波紋或不清晰等情況時，請調整您的顯示器面板上的設定按鈕即可獲得改善。(關於細項設定，您可以參考顯示器的使用手冊。)


## 5. 附錄

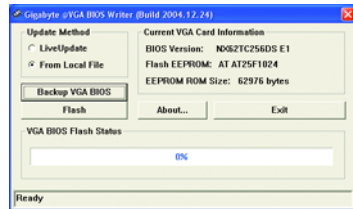
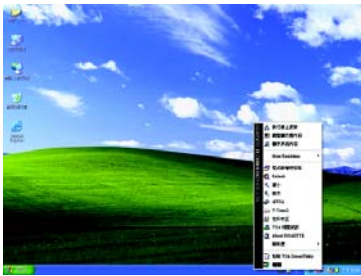
### 5.1. 如何更新您顯示卡的 BIOS

#### 5.1.1. 以 DOS 指令更新 BIOS

1. 將所下載的 VGA BIOS 壓縮檔解壓縮到硬碟或軟碟機磁片。以下步驟以存至 A 軟碟機之磁片為例。
2. 重新啟動您的電腦到 MS-DOS 模式。若作業系統為 Windows XP / 2000，則需準備一張可開機的磁片，方可進入 MS-DOS 模式。
3. 在 DOS 模式下切換命令列路徑到檔案所在位置，例：A:\>。
4. 若您需先備份現有 BIOS 檔，請在 A:\>後輸入 BIOS 更新工具檔名 -s BIOS 檔名 (例: gvf 11 -s nx66t128d.f1)並按Enter。
5. 更新 BIOS 時，請在 A:\>後輸入 BIOS 更新工具檔名 -p BIOS 檔名(例: gvf11 -p nx66t128d.f2)並按Enter。
6. 更新結束後請重新啟動您的電腦，以便完成更新 VGA BIOS 之步驟。

#### 5.1.2. 以 @VGA 更新 BIOS

1. 當 GIGABYTE Utility 安裝完成後，可以在工作命令列找到技嘉的小圖示 ，按下右鍵選擇 @VGA。



@VGA 顯示卡 BIOS 更新程式。

2. 透過Internet更新BIOS：
  - a. 點選 **Live Update**，再按下 **Flash** 按鈕。@VGA 會自動搜尋下載最新的 BIOS 檔案並立即更新。(若 @VGA 偵測到您顯示卡的 BIOS 為最新版本，@VGA 則不會進行更新的動作)
3. 不透過Internet更新BIOS：
  - a. 請先至技嘉網站下載 BIOS 檔案，並將其解壓縮至您的硬碟或磁碟片中。
  - b. 點選 **From Local File**，再按下 **Flash** 按鈕。
  - c. 找尋已下載及已解壓縮的顯示卡 BIOS 檔案。
  - d. 依照畫面指示即可完成更新 BIOS。

## 5.2. 解析度與色彩對照表（在 Windows XP 下）

GeForce 6200 TurboCache(TM) Single Display Standard Modes

解析度	垂直 更新率 (Hz)	顏色 8bpp (256 色) 標準模式	16bpp (65K 色) 高彩模式	32bpp (16.7M 色) 全彩模式
320 x 200	60-75	✓	✓	✓
320 x 240	60-75	✓	✓	✓
400 x 300	60-75	✓	✓	✓
480 x 360	60-75	✓	✓	✓
512 x 384	60-75	✓	✓	✓
640 x 400	60-75	✓	✓	✓
640 x 480	60-240	✓	✓	✓
720 x 480	60	✓	✓	✓
720 x 576	60	✓	✓	✓
800 x 600	60-240	✓	✓	✓
848 x 480	60-240	✓	✓	✓
960 x 600	60-240	✓	✓	✓
1024 x 768	60-200	✓	✓	✓
	240	✓	✓	X
1088 x 612	60-200	✓	✓	✓
	240	✓	✓	X
1152 x 864	60-170	✓	✓	✓
	200	✓	✓	X
1280 x 720	60-150	✓	✓	✓
	170	✓	✓	X
1280 x 768	60-150	✓	✓	✓
	170	✓	✓	X
1280 x 960	60-150	✓	✓	✓
	170	✓	✓	X
1280 x 1024	60-150	✓	✓	✓
	170	✓	✓	X
1360 x 768	60-150	✓	✓	✓
	170	✓	✓	X
1600 x 900	60-120	✓	✓	✓
	140-150	✓	✓	X
1600 x 1024	60-100	✓	✓	✓
	120	✓	✓	X

續下頁...



解析度	垂直 更新率 (Hz)	顏色 8bpp (256 色) 標準模式	16bpp (65K 色) 高彩模式	32bpp (16.7M 色) 全彩模式
1600 x 1200	60-100	✓	✓	✓
	120	✓	✓	X
1920 x 1080	30-85	✓	✓	✓
	100	✓	✓	X
1920 x 1200	60-85	✓	✓	✓
	100	✓	✓	X
1920 x 1440	60-85	✓	✓	✓
2048 x 1536	60-85	✓	✓	✓

\* 列表中之解析度會依您所使用的顯示器而有不同，此表僅供參考。



[illegible]

