

# AP128DG-H

RADEON™ 8500 Graphics Accelerator

USER'S MANUAL

中文使用手冊

REV. 1.02

12MD-AP128G-102

# *Chapter 1 User's Manual*

## **Copyright**

Copyright by **GIGA-BYTE TECHNOLOGY CO., LTD.** ("GBT") No part of this manual may be reproduced or transmitted in any form without the expressed, written permission of **GBT**.

## **Trademarks**

Third-party brands and names are the property of their respective owners.

## **Notice**

Due to rapid change in technology, some of the specifications might be out of date before publication of this booklet.

The author assumes no responsibility for any errors or omissions which may appear in this document nor does it make a commitment to update the information contained herein.

Please do not remove any labels on VGA card, this may void the warranty of this VGA card.

Apr. 12, 2002 Taipei, Taiwan

---

## Table of Contents

1.INTRODUCTION	
1.1. PREFACE .....	4
1.2. KEY FEATURES .....	4
1.3. FEATURES OF ATI RADEON™ 8500 .....	4
2.HARDWARE INSTALLATION	
2.1. UNPACKING .....	5
2.2. BOARD LAYOUT .....	6
2.3. HARDWARE INSTALLATION .....	8
3.SOFTWARE INSTALLATION	
3.1 Win98 /98SE or WinME / Win XP Driver And Utilities Installation	10
3.1.1 Operating system requirement .....	10
3.1.2 DirectX installation .....	11
3.1.3 Driver installation .....	13
3.1.4 Utilities on driver CD .....	17
3.1.5 Taskbar Icon .....	17
3.1.6 Display Property pages .....	22
3.2.WINDOWS NT 4.0 DRIVER INSTALLATION .....	28
3.3.WINDOWS 2000 DRIVER INSTALLATION .....	29
3.4 BIOS FLASH UTILITY .....	29
4.Troubleshooting Tips .....	27
5.Appendix .....	30
5.1.How to refash the BIOS .....	30
5.2.Resolutions and Color Depth Table .....	33

# **1.INTRODUCTION**

## **1.1. PREFACE**

Unsurpassed graphics performance

AP128DG-H provides the fastest and most advanced 2D, 3D and multimedia graphics performance for the latest applications and enables use of progressive new features in upcoming third party applications - without compromising performance. AP128DG-H's comprehensive support of DirectX® 8.1 features, highly optimized OpenGL® support, and flexible memory configurations allow implementations targeted at gaming, enthusiast and workstation platforms.

## **1.2. KEY FEATURES**

- Powered by the RADEON™8500 GPU and 128MB DDR memory for advanced 3D graphics
- HYPER Z™ II technology integrate
- SMOOTHVISION™ eliminates distracting visual artifacts for smoother looking images and without seriously compromising performance
- Supports high-speed double data rate (DDR) SDRAM memory at 275MHz
- 165 MHz integrated TMDS transmitter supports panels up to (2048x1536) resolution
- Supported DVI-I and TV-OUT
- Supported V-Tuner for performance tweaker.
- Bundle six of 3D Games(4 full version,2 lite version) and CyberLink PowerDVD.

### 1.3. Features of ATi RADEON™ 8500

- Features TRUFORM™ technology to make characters and objects more rounded and natural
  - HYPER Z™ II technology conserves memory bandwidth for improved performance in demanding applications
  - SMOOTHVISION™, ATI's most advanced anti-aliasing, eliminates distracting visual artifacts for smoother looking images
  - High resolution 32-bit 3D gaming up to 2048x1536
  - SMARTSHADER™ technology takes advantage of the DirectXR 8.1 features to enable more complex and realistic lighting effects
  - Support for DirectXR 8.1 and OpenGL 1.3 applications
  - CHARISMA ENGINE™ II supports Transformation, Clipping and Lighting (T&L) at 68.7 million triangles/second peak processing capability
  - PIXEL TAPESTRY™ II, 3D rendering engine, powers an incredible 2.4 gigatexels/second for high fill rates in 32-bit at high resolutions
  - Leading-edge HYDRAVISION™ technology supports traditional CRT monitors, flat panel displays and TVs
  - VIDEO IMMERSION™ II technology enables integration of industry-leading digital video features, including advanced de-interlacing algorithms for unprecedented video quality
- Ps: Excerpt from ATi website.

## 2.HARDWARE INSTALLATION

### 2.1. UNPACKING

The AP128DG-H package contains the following:

- The AP128DG-H graphics accelerator
- This USER'S MANUAL
- Power DVD XP CDx1
- Full Version game CD x4 (CD x 4), Lite version game x2 (CDx1)
- Driver CDwith V-Tuner utilities
- One cable support S-video and AV-Output ; DVI-I to D-Sub connector



### **WARNING!**

Expansion cards contain very delicate Integrated Circuit (IC) chips. To protect them against damage from static electricity, you should follow some precautions whenever you work on your computer.

1. Turn off your computer and unplug power supply.
2. Use a grounded wrist strap before handling computer components. If you do not have one, touch both of your hands to a safely grounded object or to a metal object, such as the power supply case.
3. Place components on a grounded antistatic pad or on the bag that came with the components whenever the components are separated from the system.

The card contains sensitive electric components, which can be easily damaged by static electricity, so the card should be left in its original packing until it is installed.

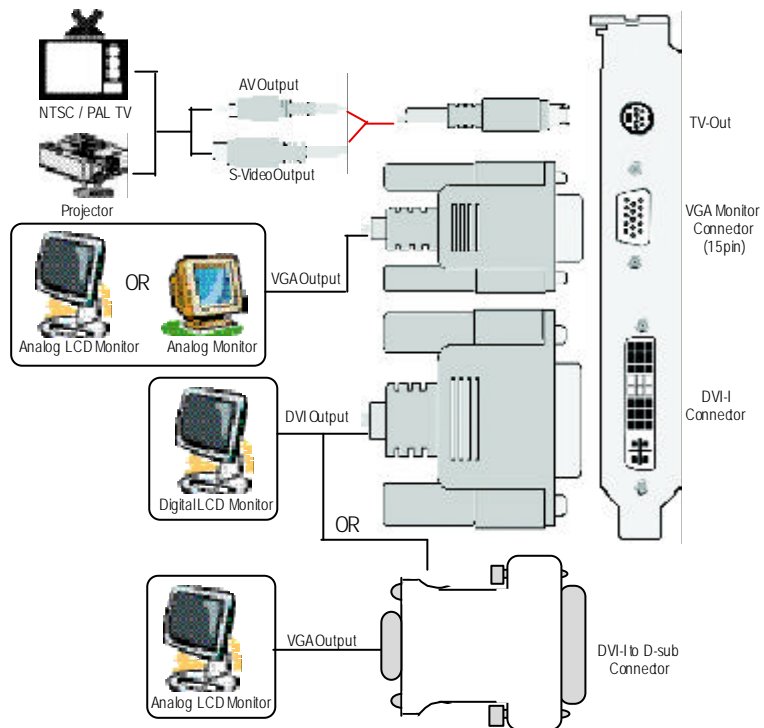
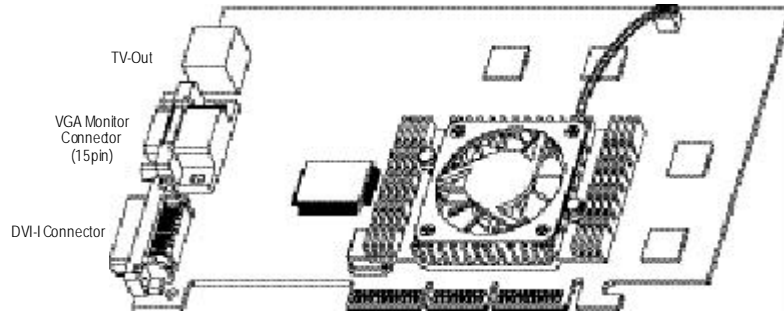
Unpacking and installation should be done on a grounded anti-static mat. The operator should be wearing an anti-static wristband, grounded at the same point as the anti-static mat.

Inspect the card carton for obvious damage. Shipping and handling may cause damage to your card. Be sure there are no shipping and handling damages on the card before proceeding.

- ⚡ **DO NOT APPLY POWER TO YOUR SYSTEM IF IT HAS BEEN DAMAGED ON THE CARD.**
- ⚡ **In order to ensure your graphics card working correctly, please use official Gigabyte BIOS only Use none official gigabyte BIOS might cause problem on the graphics card.**

## 2.2. BOARD LAYOUT

AP128DG-H (128MB DDR)



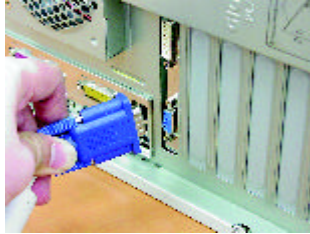
## 2.3. HARDWARE INSTALLATION

Installing Your Graphics card.

Now that you have prepared your computer, you are ready to install your graphics accelerator card.

To install your graphics accelerator card

1. Power off the computer and monitor, then disconnect the display cable from the back of your computer.



2. Remove the computer cover. If necessary, consult your computer's manual for help in removing the cover.



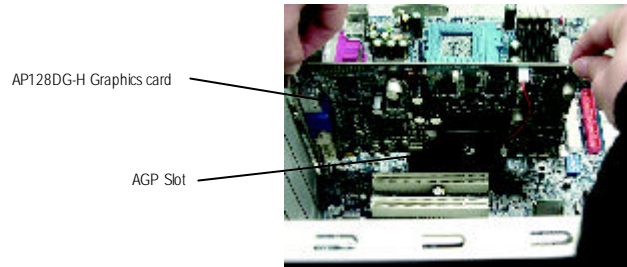
3. Remove any existing graphics card from your computer.

Or, if your computer has any on-board graphics capability, you may need to disable it on the motherboard. For more information, see your computer documentation.

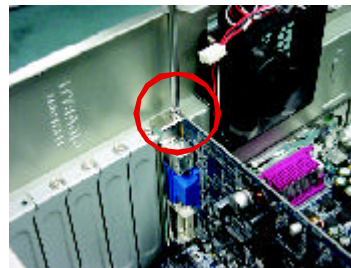




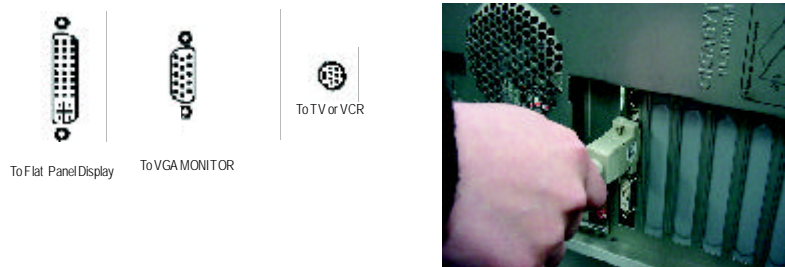
4. Locate the AGP slot. If necessary, remove the metal cover from this slot; then align your Graphics card with the AGP slot, and press it in firmly until the card is fully seated.



5. Replace the screw to fasten the card in place, and replace the computer cover.



6. Plug the display cable into your card; then turn on the computer and monitor. If your Graphics card came with a DVI connector, you can connect a flat panel display to the appropriate connector, as shown below...



You are now ready to proceed with the installation of the Graphics card driver. For detailed instructions, select your operating system from the list below:

## **3.SOFTWARE INSTALLATION**

In this manual, we assume that your CD-ROM Drive letter to be Drive D:

### **3.1. WINDOWS® 98 /98SE / WINDOWS ME /WINDOWS XP DRIVER AND UTILITIES INSTALLATION**

The installation of Win 98/98SE / Win ME / Win XP drivers is very simple. When you insert the driver CD into your CD-ROM drive, you can see the AUTORUN window (if it does not show up, run "D:\setup.exe"). Then you can follow guides to setup your **AP128DG-H** driver (Please follow the subsection 3.1.3 "Step By Step Installation" to install the driver for your AP128DG-H graphics accelerator.

#### **3.1.1.Operating system requirement**

- If your OS is Microsoft Windows, when loading the **AP128DG-H** drivers for the system, please make sure your system ( Windows 98/98SE or Windows ME) has installed DirectX8.1 or later.
- If you install the **AP128DG-H** drivers for the mainboard, which consist of SIS, ALI or VIA chipsets, please install the appropriate **Driver** program for that mainboard. Or please contact your motherboard nearest dealer for M/B Diver.

### 3.1.2.DirectX Installation

Install Microsoft DirectX 8.1 to enable 3D hardware acceleration support for Win98/98SE or WinME to achieve better 3D performance.

Note: For software MPEG support in Win98/98SE or WinME, you must DirectX first install.

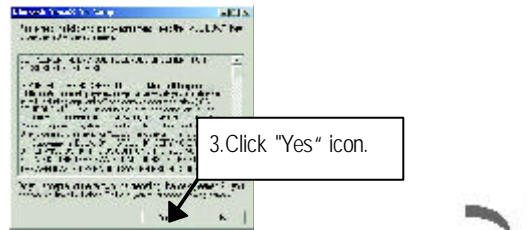
● Must be install DirectX 8.1 (or later)



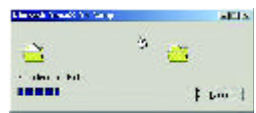
1. Installation DirectX Driver  
Click "Install DirectX 8.1" Item.

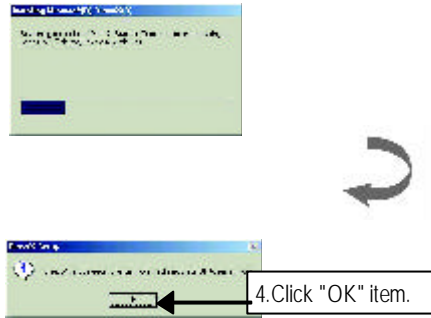


2. Click "Yes" icon.



3. Click "Yes" icon.





Then the DirectX 8.1 installation is completed.

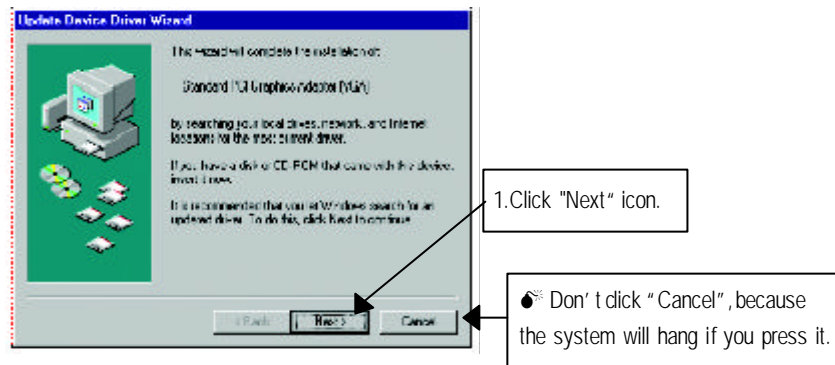
### 3.1.3.Driver Installation

The following is the step-by-step installation guide.

#### Step 1: New Hardware Found

After AP128DG-H is inserted into your computer at the first time, the windows will automatically detect a new hardware in the system and pop out a "New Hardware Found" message. Please select "Do not install a driver" and press OK.

#### Step 2: Update Device Driver Wizard: Standard PCI Graphics Adapter(VGA)

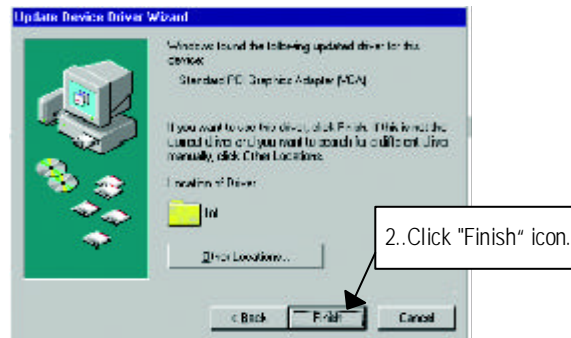


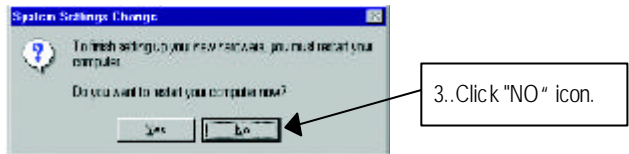
#### Step 3: Update Device Driver Wizard: Finish

At this time, system will ask for your Windows CD in order to complete the VGA driver installation.

If you don't have the CD, you can press C:\Windows\System directory.

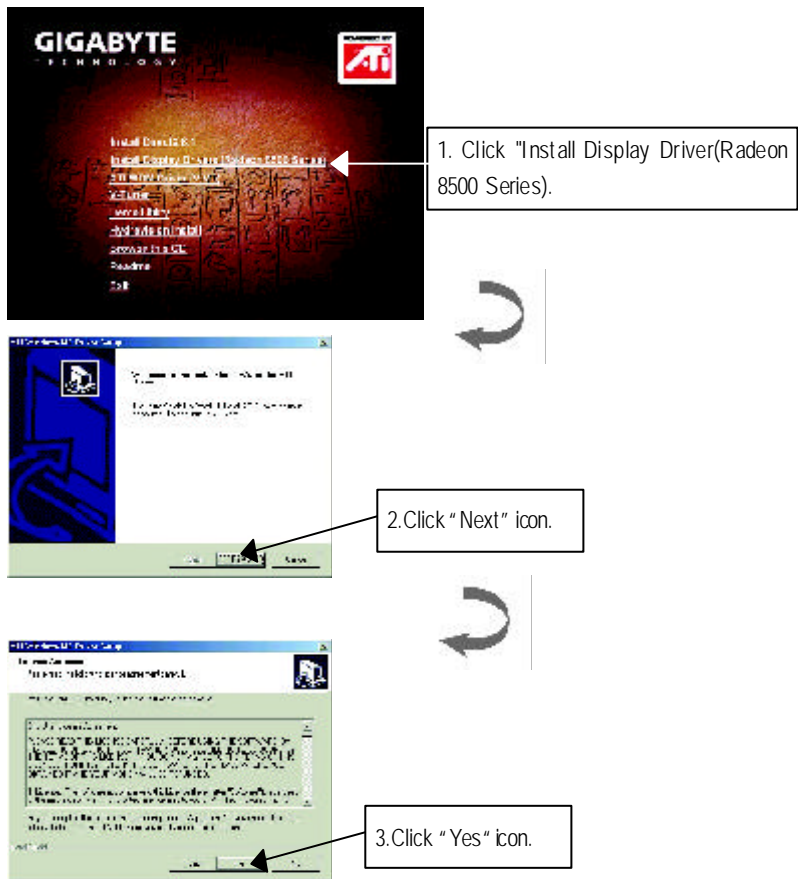
#### Step 4: System Setting Change

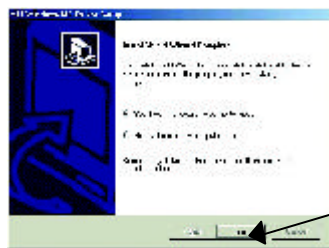
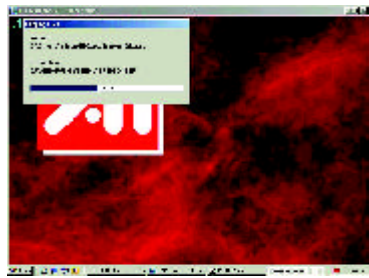




After the system has finished loading, insert the AP128DG-H driver CD disk into your CD-ROM, and then you can see the AUTORUN window. If it does not show up, please run "D:\setup.exe".

### Step 5: Driver Setup





4. Click "Finish" icon to restart computer.

### Step 6: Other Utility

( V-Tuner / Demo Utility / Hydravision Install)



Follow the setup that showing on the screen to install the Utility.



Click "V-Tuner" Item.

Click "Hydravision Install" Item.

### Step 6-1: Demo Utility



PS: ATi WDM Driver (VIVO) only for VIVO function.



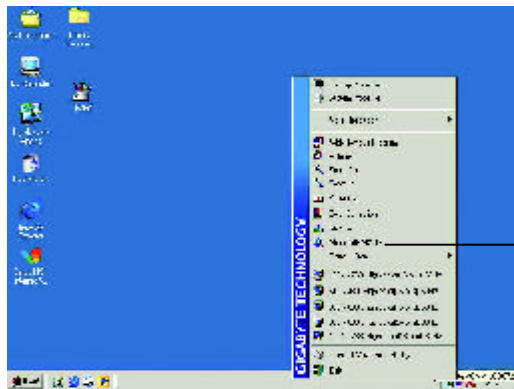
### 3.1.4. Utilities on driver CD

The utilities include Display Driver and V-Tunner utilities. Please browse the driver CD for detail.

### 3.1.5 Taskbar Icon

After installation of the display drivers, you will find an GBT icon on the taskbar's status area. Right-clicking this icon opens the GBT control panel, showing a menu composed of shortcuts of the graphics board's enhanced and other functions.

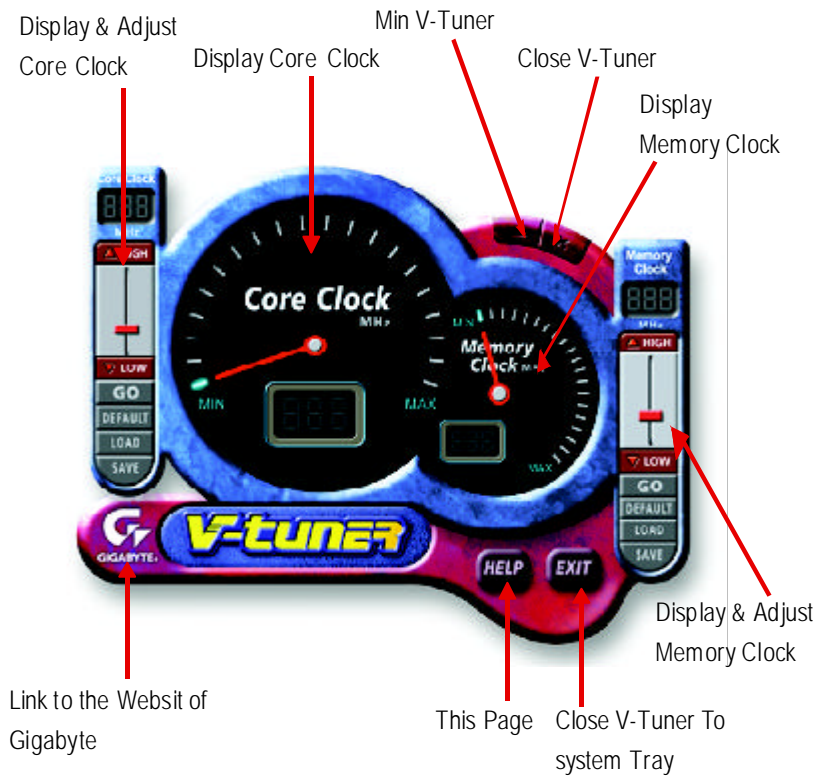
You may click the "Display Properties" item, and then click Settings. Click "Advanced" after clicking Settings. Click the appropriate tab to change your display settings.



You can link to GBT web site for updated information about the graphics board, latest drivers, and other information.

### V-Tuner (Overclock Utility)

**V-Tuner** lets you adjust the working frequency of the graphic engine and video memory (Core Clock and Memory Clock)



## VGA Info

**VGA Info** lists the relevant information about your card.



## ColorAdjust

**Color Adjust** allows you to make color adjustments, such as brightness, contrast, and gamma values for each or all of RGB colors.



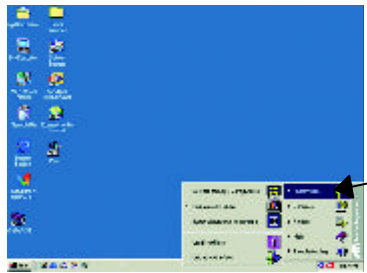
After installation of the display drivers, you will find an ATI icon on the taskbar's status area. Clicking this icon opens the ATI control panel.

HYDRAVISION™ and the Desktop Manager are activated whenever Windows® starts. Installing HYDRAVISION™ adds menu options to the ATI Icon.

Click on the ATI icon to access the application's features and Help, or to unload the HYDRAVISION™ Desktop Manager.



1. Using Single Display



2. Hydravision

HYDRAVISION™ is primarily software designed for multiple monitor settings. RADEON 8500 graphic cards that have more than one display output can benefit fully from this software. A RADEON 8500 with only one display output can still take advantage of the many features of HYDRAVISION™.

HYDRAVISION™ installation enables the Desktop Manager and creates a Windows® program group for HYDRAVISION™ display management software.

### Desktop Management Controls:

The Desktop Management dialog lets you determine the behavior of pop-up windows and dialog boxes.



### Hot Keys Controls

HYDRATION™ allows you to specify hot key shortcuts for common operations such as starting applications and changing display resolution.

*NOTE: Hot Keys only work if HYDRATION™ is installed and loaded.*

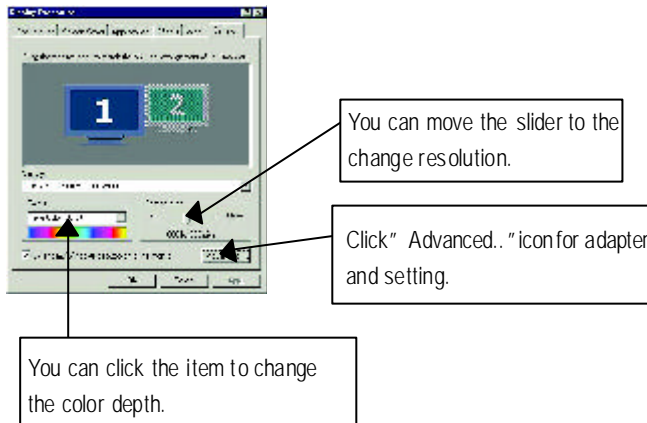


### 3.1.6. Display Property pages

The screen shows the information of display adapter, color, the range of display area and the refresh rate.

#### Setting (Resolutions and Color depth for windows)

The Setting properties page allows you to adjust the Direct 3D settings



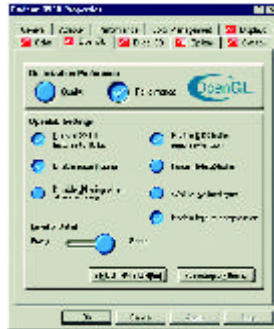
#### Options Properties



- **Enable ATI taskbar icon application** enables or disables the ATI taskbar icon. However, this feature must be enabled for ATI hotkey support.
- **Show ATI icon on taskbar** adds or removes the ATI icon from the taskbar.

**OpenGL Properties:**

The OpenGL properties page gives you complete control of the OpenGL settings.



- **Optimization Preference**

- **Quality** allows you to optimize your OpenGL settings for quality.
- **Performance** allows you to optimize your OpenGL settings for performance

- **OpenGL Settings**

- **Convert 32 bit textures to 16 bit** allows you to increase video performance for games that make heavy use of textures. However this could also reduce image quality.
- **Enable KTX buffer region extension** enables rapid updates of those portions of your screen that have been moved.
- **Enable page flipping** allows you to enable hardware acceleration of page flipping to swap full screen buffers.
- **Force 16-bit Z-buffering** allows you to disable all other formats of Z-buffer and utilizes 16-bit Z-buffering.
- **Disable dithering when alpha blending** may remove artifacts left on the screen when both dithering and alpha blending are enabled.
- **Wait for vertical sync** lowers the frames per second rate in full screen games. However this can reduce the image tearing that can occur with higher frame rates.
- **Enable texture compression** enables and disables texture compression.
- **Full Screen anti-aliasing** allows you to set the level of full-screen anti-aliasing. This will result in an overall higher quality image with a slight reduction in performance.

- **Anisotropic texture filtering** allows you to set a level of anisotropic texture filtering. This will result in much higher quality textures with a negligible reduction in performance.
- **Level of Detail** allows you to set the level of mipmapped detail. The **Sharp** setting is recommended for larger, more detailed, mipmapping scenes. The **Fuzzy** setting is recommended for smaller, less detailed, mipmapping scenes.

### **Direct 3D Display Properties**

The Direct 3D properties page allows you to adjust the Direct 3D settings.



### **D3D Settings**

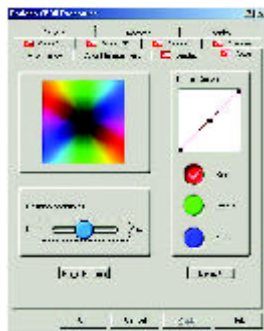
- **Wait for vertical sync** allows you to lower the frame rate of full screen games. This will reduce image tearing that can occur with higher frame rates.
- **W-buffer support** allows you to enable or disable W-buffer support. It is recommended that W-buffer support should be disabled for games that do not support this feature.
- **Compressed texture format** allows you to enable support for DirectX compressed texture formats. Some applications cannot handle too many texture formats. Disabling compressed texture format the video driver ceases to support this feature.
- **Alternate pixel center** may eliminate problems with some 3D games that displays vertical and horizontal lines around textures or text that appears incorrect. However, this setting should only be used if you are experiencing these symptoms, as it may cause problems with other games.
- **Z-buffer bit depths** allows you to set the Z-buffer bit rate. By default 16:24 (16 and 24) selected to achieve optimum performance.  
8-bit **Stencil** allows you to add 32-bit Z-buffer with 8 bits for stencil and 24 bits for the Z-buffer.



- **Anti-aliasing** provides you with an overall higher quality video image with a slight reduction in performance. When "Application Preference" mode is selected, the video driver will use anti-aliasing only when an application requests it. When "Always On" mode is selected, the video driver will force anti-aliasing on all applications.
- **2 Samples** provides a higher sample ratio, which improves overall image quality even further, with a slight reduction in performance. This also requires more video memory. **4 Sample** provides a higher sample ratio, which improves overall image quality even further, with a slight reduction in performance. This also requires more video memory.
- **Dithering method** when alpha blending will remove certain onscreen artifacts that are sometimes produced when both dithering and alpha blending are enabled.
- **Defaults** restores your Direct 3D setting to their default values.

### Color Properties

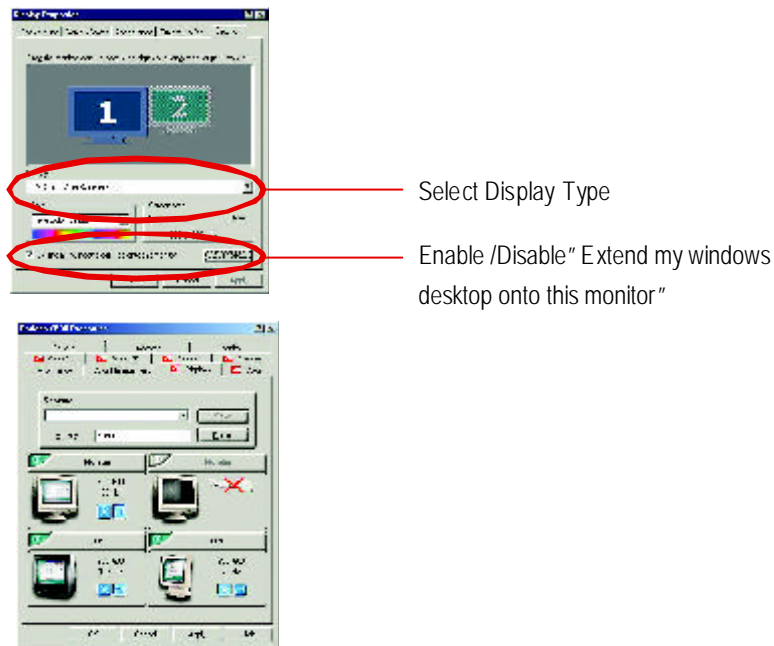
The **Color Properties** is used to adjust the color settings. It also allows gamma control for video playing of the Video Overlay. The color settings affect all display devices mapped to the view. You can change red, green, and blue display colors. Set Desktop and Video Overlay brightness (gamma) levels can also be changed.



- **Desktop brightness** increases or decreases the color brightness of your desktop. The higher the gamma value, the higher the brightness and contrast of your display.
- **Overlay brightness** increases or decreases the color brightness of your video overlay window. The higher the gamma value, the higher the brightness and contrast of your display.
- **Game gamma** increases or decreases the color brightness of Direct 3D or OpenGL games played in fullscreen mode.
- **Color Curve** adjusts the selected color (red, green, or blue) by moving the color curve with your mouse.
- **Default** restores the color settings to the default values.

**Display Properties:**

If your VGA card is equipped with an S-Video connector, you can use a second output device (e.g. a TV or a computer monitor) as part of your operating desktop extending your desktop to a second device or copying your desktop on the second device.



**Connecting your graphics card to a TV or VCR**

Turn off your computer and your television (or VCR).

Ensure your graphics card is installed correctly.

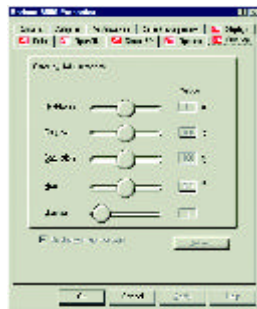
*For information about placing the card in your computer and installing the enhanced graphics driver, see the user's manual.*

Determine if your television (or VCR) has an S-Video or Composite video connection.

Looking at the back of your computer, locate your graphics card. Using an S-Video cable or the supplied adapter cable, attach one end of the cable to your graphics card and the other to your television (or VCR). See "Connecting your graphics card to a TV (or VCR)" on the following page.

### Overlay Properties

The **Overlay Properties** is used to adjust the Brightness / Contrast / Saturation / Hue/ Gamma settings.



### **3.2. WINDOWS NT 4.0 DRIVER INSTALLATION**

Please make sure the Windows NT 4.0 have installed Windows NT 4.0 Service Pack version 6.0 (or later) before installing the graphics accelerator driver.

To install the AP128DG-H driver for Windows NT

1. Insert the INSTALLATION CD into your CD-ROM drive. If Windows® runs the CD automatically.
2. Click Start.
3. Select Run.
4. Type the following:  
D:\SETUP  
(If D is not your CD-ROM drive, substitute D with the correct drive letter.)
5. Click "OK".
6. Click on "Install Display Drivers(Radeon 8500 Series)" to begin the Installation Wizard.
7. Click "Next".
8. Click "Yes" to the license agreement.
9. Follow the Wizard's on-screen instructions to complete the installation.

### 3.3.WINDOWS 2000 DRIVER INSTALLATION

Please make sure the Windows NT 4.0 have installed Windows®2000 Service Pack version 2 (or later) before installing the graphics accelerator driver.

With Windows® 2000 running on your computer, you need to install the AP128DG-H driver to take advantage of the higher performance, resolutions, and special graphic features of the Graphics card. To ensure you install the latest driver, use the Installation CD that shipped with your AP128DG-H Graphics card.

To install the AP128DG-H driver for Windows® 2000

1. Insert the INSTALLATION CD into your CD-ROM drive. If Windows R runs the CD automatically.
2. Click Start.
3. Select Run.
4. Type the following:  
D:\SETUP  
(If D is not your CD-ROM drive, substitute D with the correct drive letter.)
5. Click "OK".
6. Click on "Install Display Drivers(Radeon 8500 Series)" to begin the Installation Wizard.
7. Click "Next".
8. Click "Yes" to the license agreement.
9. Follow the Wizard's on-screen instructions to complete the installation.

### 3.4.BIOS FLASH UTILITY

**AP128DG-H** BIOS update procedure:

- Note: Please download the newest BIOS from our website ([www.gigabyte.com.tw](http://www.gigabyte.com.tw)) .  
or contact your local dealer for the file.
- If you want to realize the BIOS flash information, please refer to detail on P.31

## **4. Troubleshooting Tips**

The following troubleshooting tips may help if you experience problems. Contact your dealer or GBT for more advanced troubleshooting information.

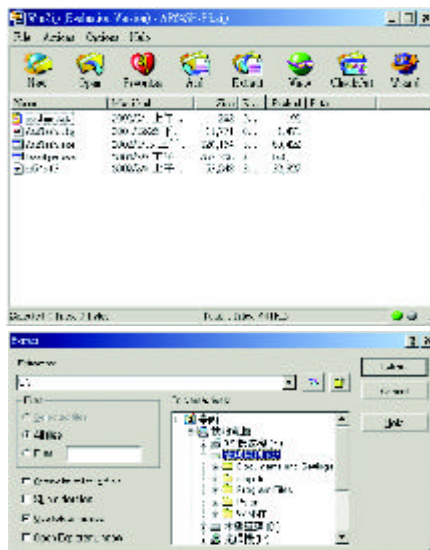
- Check that the card is seated properly in the AGP slot.
- Ensure the display cable is securely fastened to the card's display connector.
- Make sure that the monitor and computer are plugged in and receiving power.
- If necessary, disable any built-in graphics capabilities on your motherboard. For more information, consult your computer's manual or manufacturer. (NOTE: Some manufacturers do not allow the built-in graphics to be disabled or to become the secondary display.)
- Make sure you selected the appropriate display device and graphics card when you installed the graphics driver.
- For more troubleshooting tips, right-click the ATI icon in the taskbar and select Troubleshooting.
- If you have problems during bootup, start your computer in Safe Mode. In Windows®98 SE and Windows® Me, press and hold the CTRL key until the Microsoft® Windows® Startup Menu appears on the screen. Then select the number for Safe Mode, and press Enter. (You can also use F8 to bring up the Microsoft Windows® Startup Menu.) In Safe Mode, bring up the Device Manager and check for duplicate display adapter and monitor entries if you are only using one graphics card.
- For more assistance, use the Troubleshooting Guide located in the Windows® Help or contact your computer manufacturer.

## 5. Appendix

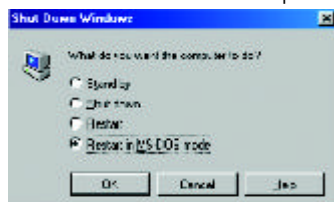
### 5-1 How to reflash the BIOS

How to reflash the BIOS for your (Chip by ATi) graphics card?

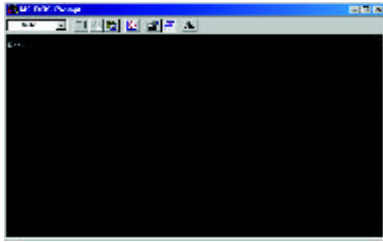
1. Extract the Zip file to the drive C : or A:



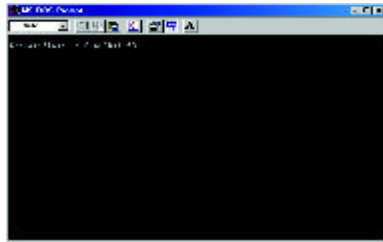
2. Restart your PC in MS-DOS mode  
(This function only for Windows 98/98SE, If your OS is Windows 2000 / Windows Me / Windows XP. please use the bootable disk to MS-DOS mode)



3. Change the command path to the file location C:\> or A:\>



4. Reflash BIOS command as below : C:\> atiflash -p 0 <filename>



5. Reboot your PC when it's done.



## 5.2.Resolutions and Color Depth Table

Radeon 8500 2D Single Display Modes

Display Screen Resolution	Refresh Rate (Hz)	Hor. Scan (KHz)	Pixel Clock (Mhz)	Color Depth (bpp)		
				8bpp(256 color) Standard mode	16bpp(65K color) High mode	32bpp(16.7M) Truemode
<b>640x480</b>	60	31.5	25.2	✓	✓	✓
	72	37.9	31.5	✓	✓	✓
	75	37.5	31.5	✓	✓	✓
	85	43.3	36.0	✓	✓	✓
	90	45.4	37.8	✓	✓	✓
	100	50.9	43.1	✓	✓	✓
	120	61.8	52.4	✓	✓	✓
	160	84.3	72.8	✓	✓	✓
	200	108.0	95.0	*	*	*
<b>800x600</b>	60	37.9	39.9	✓	✓	✓
	70	43.7	45.5	✓	✓	✓
	72	48.1	50.0	✓	✓	✓
	75	46.9	49.5	✓	✓	✓
	85	53.7	56.3	✓	✓	✓
	90	56.8	60.0	✓	✓	✓
	100	63.6	68.1	✓	✓	✓
	120	77.1	83.9	✓	✓	✓
	160	105.4	116.4	✓	✓	✓
200	135.0	149.0	*	*	*	
<b>1024x768</b>	60	48.4	65.0	✓	✓	✓
	70	56.5	75.0	✓	✓	✓
	72	57.6	78.4	✓	✓	✓
	75	60.0	78.8	✓	✓	✓
	85	68.7	94.5	✓	✓	✓
	90	72.8	100.1	✓	✓	✓
100	81.4	113.3	✓	✓	✓	

To be continued..

\* No Guarantee

AP128DG-H Graphics Accelerator

Display Screen Resolution	Refresh Rate (Hz)	Hcr. Scan (KHz)	Pixel Clock (Mhz)	Color Depth (bpp)		
				8bpp(256 color) Standard mode	16bpp(65K color) High mode	32bpp(16.7M) True mode
<b>1024x768</b>	120	98.7	139.0	✓	✓	✓
	140	116.6	164.2	*	*	*
	150	125.7	176.9	✓	✓	✓
	160	134.8	192.0	*	*	*
	200	172.8	246.1	*	*	*
<b>1152x864</b>	43	38.0	56.0	*	*	*
	47	41.7	62.1	*	*	*
	60	53.7	81.6	✓	✓	✓
	70	63.0	96.7	✓	✓	✓
	75	67.5	108.0	✓	✓	✓
	80	72.4	112.3	*	*	*
	85	77.0	119.6	✓	✓	✓
	100	91.5	143.4	✓	✓	✓
	120	111.1	176.0	*	*	*
	150	141.4	226.3	*	*	*
<b>1280x1024</b>	60	64.0	108.0	✓	✓	✓
	70	74.6	128.9	✓	✓	✓
	74	79.0	138.5	*	*	*
	75	80.0	135.0	✓	✓	✓
	85	91.1	157.5	✓	✓	✓
	90	97.0	169.2	✓	✓	✓
	100	108.5	190.9	✓	✓	✓
	120	131.6	233.7	*	*	*
<b>1600x1200</b>	52	64.2	137.7	*	*	*
	58	71.9	155.4	*	*	*
	60	75.0	162.0	✓	✓	✓
	66	82.2	178.9	*	*	*
	75	93.8	202.5	✓	✓	✓
	76	95.2	208.7	*	*	*
	85	106.3	229.5	✓	✓	✓

To be continued..

\* No Guarantee

Display Screen Resolution	Refresh Rate (Hz)	Hor. Scan (KHz)	Pixel Clock (MHz)	Color Depth (bpp)		
				8bpp(256 color) Standard mode	16bpp(65K color) High mode	32bpp(16.7M) True mode
<b>1600x1200</b>	92	116.4	257.0	*	*	*
	100	127.1	280.6	*	*	*
	120	154.3	343.2	*	*	*
<b>1792x1344</b>	60	83.5	203.0	*	*	*
	75	105.2	259.3	*	*	*
	85	119.9	295.5	*	*	*
	90	127.4	315.8	*	*	*
<b>1800x1440</b>	60	89.4	219.5	✓	✓	✓
	70	104.9	249.9	✓	✓	✓
	90	136.4	339.5	*	*	*
<b>1856x1392</b>	60	86.5	218.6	*	*	*
	75	109.0	277.2	*	*	*
<b>1920x1080</b>	60	67.0	172.7	✓	✓	✓
	70	78.6	205.1	*	*	*
	75	84.6	220.6	✓	✓	✓
	80	90.4	237.4	*	*	*
<b>1920x1200</b>	60	74.5	193.1	✓	✓	✓
	72	90.0	222.2	*	*	*
	75	93.9	231.4	✓	✓	✓
	76	95.2	245.0	*	*	*
	80	100.5	263.7	*	*	*
	85	107.1	282.7	✓	✓	✓
<b>1920x1440</b>	60	89.4	234.5	✓	✓	✓
	75	112.7	297.6	✓	✓	✓
<b>2048x1536</b>	60	95.3	267.0	✓	✓	✓
	70	111.9	315.2	✓	✓	✓
	75	120.2	340.5	✓	✓	✓

\* No Guarantee