

GIGABYTE™

# U21

USER'S MANUAL

使 用 手 冊

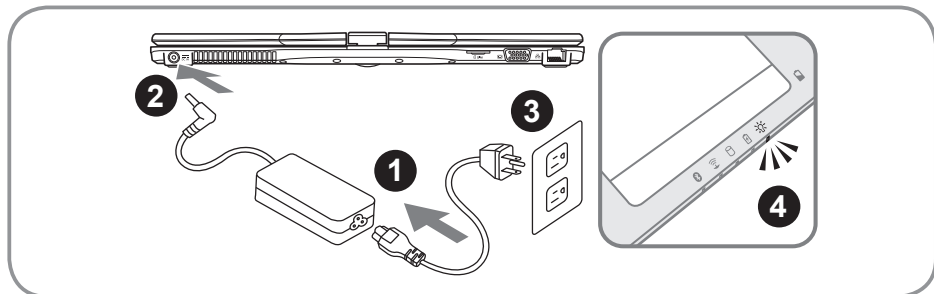
● English

V1.1

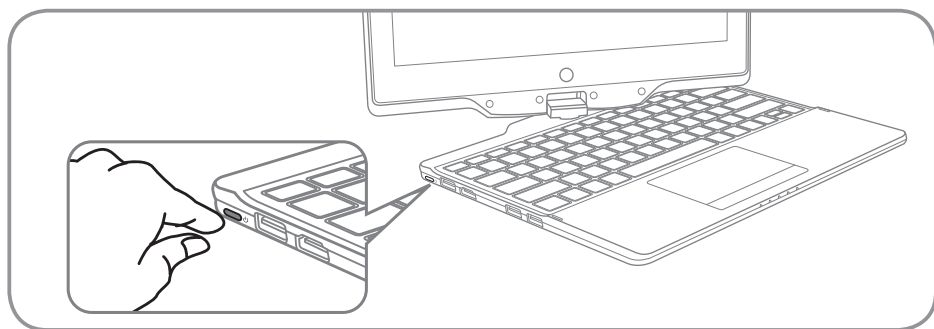
## Congratulations on your purchase of the GIGABYTE Notebook!

This Manual will help you to get started with setting up your notebook. For more detailed information, please visit our website at <http://www.gigabyte.com>. All specifications are subject to the manufacturer's configuration at the time of shipping and may change without prior notice, written or otherwise.

### Using GIGABYTE Notebook for the First Time



- 1 Connect the the power cord to the AC adapter.
- 2 Connect the AC adapter to the DC-in jack on the back side of the notebook.
- 3 Connect the power cord to the power outlet.
- 4 While the Battery Indicator lights on, press the Power Button to turn on the Notebook.



#### Switching on the Power:

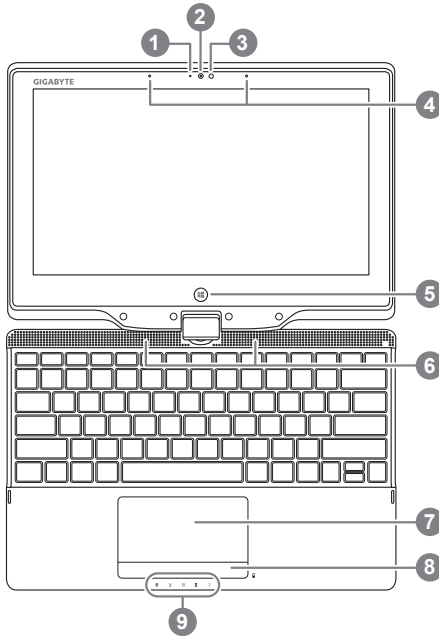
After you turn on the U21 for the very first time, do not turn it off until the operating system has been configured. Please note that the volume for the audio will not function until Windows® Setup has completed.

#### Booting Up the U21 for the First Time:

Depending on your configuration, the Microsoft® Windows® Boot Screen will be the first screen that you will see as the notebook starts up. Follow the on screen prompts and instructions and enter your personal information to complete the setup of the Windows® Operating System.

# Your GIGABYTE Notebook Tour

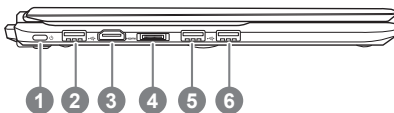
## Panoramic View



- 1 Webcam Status LED Indicator
- 2 Webcam
- 3 Light Sensor
- 4 Microphone
- 5 Windows Button ❶
- 6 Speakers
- 7 Touchpad
- 8 Battery Indicator Button ❷
- 9 LED Indicators ❸

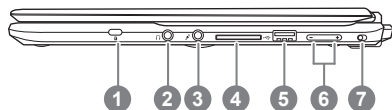
- ❶ Back to Windows 8 Style UI Mode.
- ❷ Press the right button of touchpad to check the remaining battery power in power off mode.
- ❸
  - 📶 Bluetooth Status LED
  - 📶 Wireless LAN Status LED
  - 📀 HDD Status LED
  - 🔋 Battery Status LED
  - ☀️ Power Status LED

## Left View



- 1 Power Button
- 2 USB Port
- 3 HDMI Port
- 4 Docking connector Ports
- 5 USB Port
- 6 USB Port (Support USB Charge)

## Right View



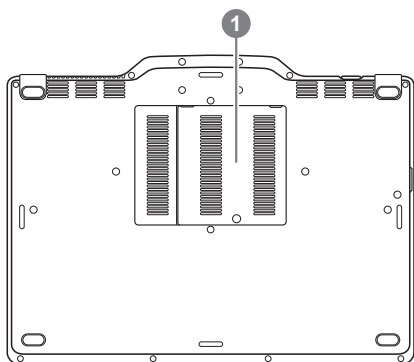
- 1 Kensington Lock Slot
- 2 Headphone Jack
- 3 Microphone Jack
- 4 SD Card Reader
- 5 USB Port
- 6 Volume Control Key
- 7 Rotation Lock Button

## Rear View



- 1 DC-in Jack
- 2 SIM Card Slot
- 3 D-sub (VGA) Port
- 4 Ethernet Port

## Base View



- 1 Memory Compartment

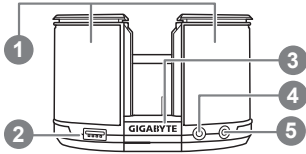


### Warning:

DO NOT remove the built-in lithium battery. For any service needs, please contact your local GIGABYTE Authorized Service Center.

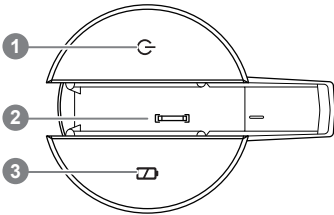
# Docking Station Tour (Optional)

## Panoramic View



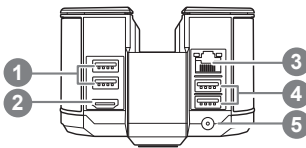
- 1 Speakers
- 2 USB 3.0 Port
- 3 Connection Status LED
- 4 Headphone Jack
- 5 Microphone Jack

## Top View



- 1 Power Button
  - 2 Docking Port Connector ❶
  - 3 Battery Capacity ❷
- ❶ Care must be taken when connecting and disconnecting.
- ❷ To inspect the battery capacity of the attached notebook.

## Rear View



- 1 USB Port
- 2 HDMI Port
- 3 Ethernet Port
- 4 USB 3.0 Port
- 5 DC-in Jack

# Hotkeys

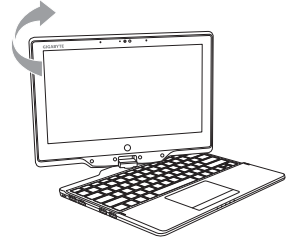
The computer employs hotkeys or key combinations to access most of the computer's controls like screen brightness and volume output. To activate hotkeys, press and hold the <Fn> key before pressing the other key in the hotkey combination.

Hotkey	Function	Description
<b>Fn+F1</b> 	Sleep Toggle	Put the computer in Sleep mode
<b>Fn+F2</b> 	Wireless LAN	Turn the internal the Wireless LAN ON/OFF
<b>Fn+F3</b> 	Brightness Down	Decrease the screen brightness
<b>Fn+F4</b> 	Brightness Up	Increase the screen brightness
<b>Fn+F5</b> 	Display Toggle	Switch display output between the display screen , external monitor(if conneted) and both.
<b>Fn+F6</b> 	Screen Display Toggle	Turns the screen display ON/OFF
<b>Fn+F7</b> 	Speaker Toggle	Turn the sperker ON/OFF
<b>Fn+F8</b> 	Volume Down	Decrease the sound Volume
<b>Fn+F9</b> 	Volume Up	Increase the sound Volume
<b>Fn+F10</b> 	Touchpad Toggle	Turn the internal touchpad ON/OFF
<b>Fn+F11</b> 	Bluetooth	Turn the internal Bluetooth ON/OFF
<b>Fn+F12</b> 	Webcam	Turn the internal webcam ON/OFF

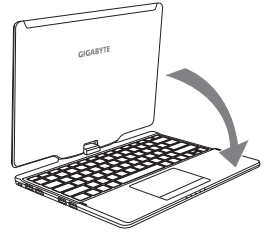
## Use your U21 as a Tablet PC

The screen of U21 is convertible to simulate a Tablet PC. Follow the steps to use this function:

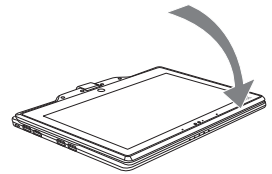
1. Open the lid (the screen display of U21.).
2. On the top center above the keyboard is the pivot connecting the display panel to the bottom case. There is a sign.
3. Follow the sign to turn the screen clockwise up to 180 degree so that the screen is facing out.



4. Lay the turned screen down into the flat position. The keyboard will be covered by the display. Use the stylus or simply touch the screen to operate U21 as a Tablet PC.



5. When done with Tablet PC, reverse the screen to 90 degree, turn counter-clockwise set U21 back to original position.

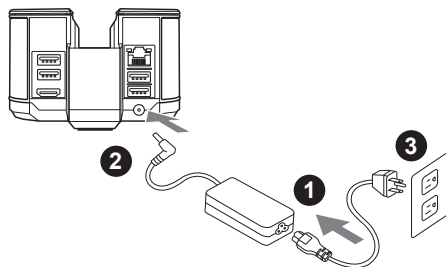


### Attention :

Please note that the screen can only rotate at 180 degree Clockwise. Be sure to turn the screen according to the sign. Forcing the screen to turn at the wrong angle will cause serious damage to the U21.

## Use the Docking Station

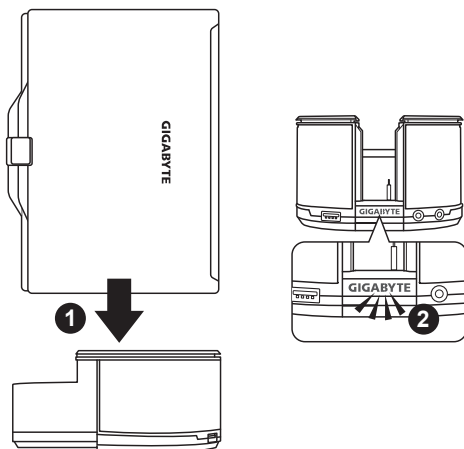
The extensive features of the GIGABYTE Docking Station are designed for enhanced usability and functionality and to extend the usability. The docking station features a number of ports and connections allowing for easy management and control of multiple peripherals.



### Connect the AC adaptor and power cord for the Docking Station

Connect the AC adaptor to ensure that the Docking Station is powered. A number of ports on the docking station also use the power to operate. It will also enable the charging of the notebook battery pack when the unit is attached to the docking station.

- 1 Connect the power cord to the AC adapter.
- 2 Connect the AC adaptor to the DC-in Jack on the rear of the docking station.
- 3 Connect the power cord to the power outlet.

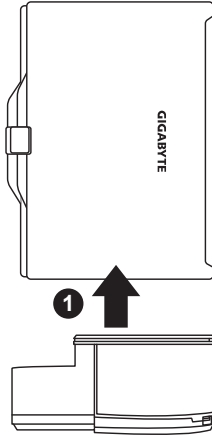


### Dock the Docking Station

Please take note of the placement of the docking ports. When the notebook is placed the right way up, the docking connectors will be on the same side. Ensure that these are aligned correctly before trying to dock the notebook to the docking station.

- 1 Once aligned gently place the notebook onto the docking station and press down firmly once aligned until the notebook is connected.
- 2 Connection Status LED should come on to indicate that it is seated and connected properly.





## Un-Dock the Docking Station

Life the Notebook offs from the Docking Station easily, so as not to damage the docking connector. To un-dock the notebook from the Docking Station does not need to shut down the notebook first.

**\* Note:**

**When you uninstall the notebook, do not press the power button.**

# Recovery Guide

## System Recovery (Restore your laptop operating system)

When something is going wrong with the laptop operating system, the storage of the laptop has a hidden partition containing a full back up image of the operating system that can be used to restore the system to factory default settings



### Note

- If the storage has been switched or the partition deleted, the recovery option will no longer be available and a recovery service will be needed.
- The recovery function is only available on devices with O/S preinstalled. Devices with DOS do not have the recovery function.

## Launch System Recovery

The system recovery feature is preinstalled before the laptop is shipped from the factory. The option menu allows you to launch the Windows recovery tool to reinstall the operating system to factory default.

The brief introduction below will show you how to start the recovery tool and restore your system.



### All ready to go

Make sure your PC is plugged in. System recovery will take a few minutes.

## Windows 7 Recovery Guide

**1**

Turn off and restart the laptop.

**2**

During the laptop turn on process, press and hold F9 key to launch the tool.

**3**

The recovery will be activated and you will see the option buttons on the window. Click on "Recovery" to start it.



### Caution

Once the "Recovery" is selected, your personal data and files will be deleted after the laptop starts restoring, and the operating system will be reset to factory default settings.

4



A progress indicator bar will show on the window when the recovery process is running. Please make sure the AC-adaptor is plugged in and do not turn off the laptop.

5



Reboot the laptop after the system recovery is complete.

## Windows 8.1 Recovery Guide

1

Turn off and restart the laptop.

2



During the laptop turn on process, press and hold F9 key to launch the tool.

3



Choose "Troubleshoot" to enter the recovery settings. (Also you can choose "Continue" to exit recovery system and continue to Windows 8.1 for files or data backup.)



### There are two options for system recovery

- **Refresh your PC**

You can refresh your laptop to improve the system stability without losing your files.

- **Reset your PC**

If you want to remove all of your files, you can reset your PC completely.

**Caution: All personal data and files will be lost.**

## 4



### ■ Choose “Refresh your PC”

Choose an account to continue.



#### Here are what will happen

- Your files and personalization settings won't be changed.
- Your PC settings will be restored to factory default settings.
- Apps from Windows Store will be kept.
- Apps you installed from discs or websites will be removed.
- A list of removed apps will be saved on your desktop.



### ■ Choose “Reset your PC”

#### ► Just remove my files

Only personal data and files will be removed, but computer settings will be kept.

#### ► Fully clean the drive

The drive will be completely restored to factory default settings. It takes more time. > [Click on “Reset” to execute recovery function.]



#### Here are what will happen

- All of your personal files and apps will be removed.
- Your PC settings will be restored to factory default settings.



### ■ Advanced options



#### System Restore

Use a restore point recorded on your PC to restore Windows.



#### System Image Recovery

Recover Windows using a specific system image file.



#### Automatic Repair

Fix problems that keep Windows from loading.



#### Command Prompt

Use the Command Prompt for advanced troubleshooting.



#### UEFI Firmware Settings

Change settings in your PC's UEFI firmware.



#### Startup Settings

Change Windows Startup behavior.

## Appendix

### ■ **Warranty & Service:**

Warranty and service and related information please refer to the warranty card or GIGABYTE service website as the below link:

<http://www.gigabyte.com/support-downloads/technical-support.aspx>

### ■ **FAQ:**

FAQ (Frequent Asked Questions) please refer to the below link:

<http://www.gigabyte.com/support-downloads/faq.aspx>