

Hardware Installation

TV dongle

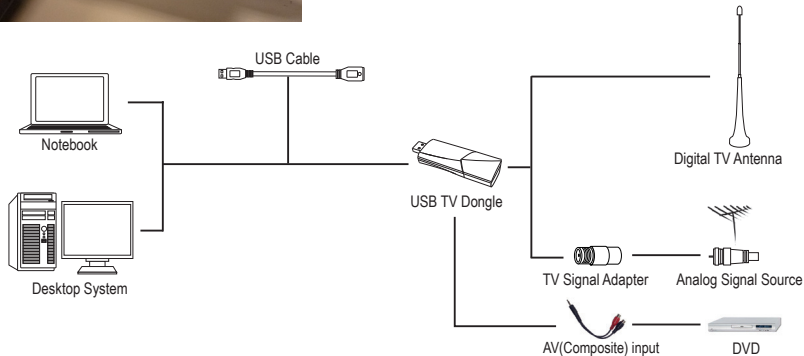


Step 1.

Take the TV dongle out of the box, and securely insert it into the USB slot.

Step 2.

Connect the TV signal adaptor and digital TV antenna to the TV dongle.



Step 3.

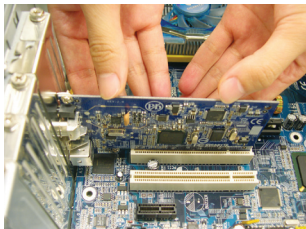
Extend digital TV/FM antenna and place it nearby windows can improve signal reception. Then the hardware installation is completed!

Notice:

All the drawings in the guide are diagrams.

About accessories' quantity and style shall depend on substances.

PCI/PCI-E card

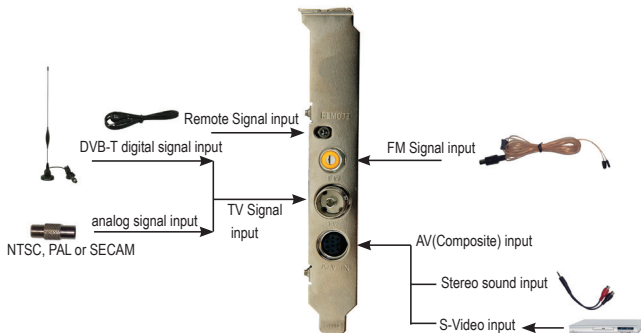


Step 1.

Take the TV card out of the bag, and securely insert it into the PCI slot.

Step 2.

Connect the IR cable, TV signal adaptor or digital TV antenna, FM antenna, and video capture cable to the TV card.



Step 3.

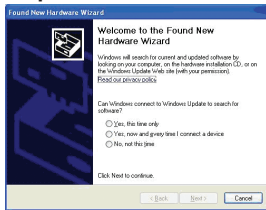
Extend digital TV/FM antenna and place it nearby windows can improve signal reception. Then the hardware installation is completed!

Notice:

All accessories' quantity and style may vary with different TV card models.

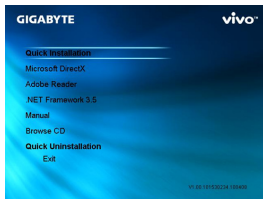
Software Installation

Step 1



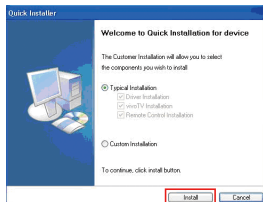
After you installed GIGABYTE TV tuner card (PCI card or USB dongle), you will see this notice "Found New Hardware Wizard"

Step 2



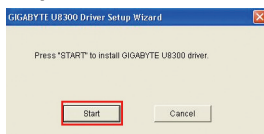
Please insert driver CD to CD-ROM. Then you will see the GIGABYTE CD menu. You can simply mark "Quick Installation" to make sure all necessary software applications will be installed.

Step 3



Generational please choice "Typical Installation" then click "Install" to continue.

Step 4



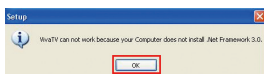
Press “**Start**” button to start installation.

Step 5



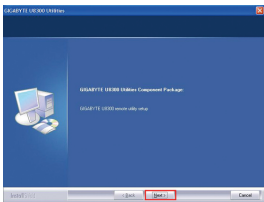
Please choice the language to use during the installation.

Step 6



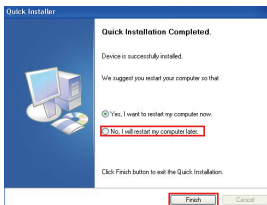
This block shows out your computer has no installed .Net Framework 3.0 or version has to update. Please follows next step to install when you meet this block during installation process.

Step 7



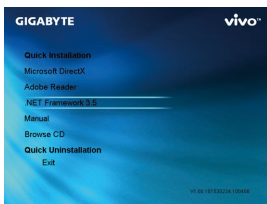
Press “**Next**” button to continue install .Net Framework 3.0

Step 8



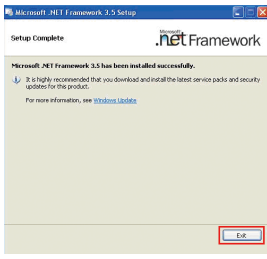
Please choice “**No, I will restart my computer later**” then press “**Finish**” button.

Step 9



Mark “.**Net Framework 3.5**” to install on your computer. (During this process, please make sure your computer connect to Internet.)

Step 10



Click “**EXIT**” button to finish .Net Framework 3.5 installation process.

Step 11



Press **“NEXT”** button to continue installation process.

Step 12



Press **“Finish”** to start ViVo™ TV player setting.

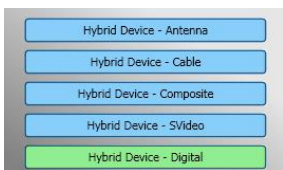


TV Player Setting

Step 1



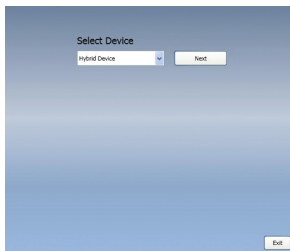
Click "Vivo™ TV" icon  on your desktop, you can start to set up this software.



Click "Source Input" icon  to select your device and signal source such as Digital, Analog (Cable or Antenna), Video (Composite, S-Video).

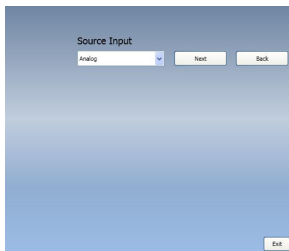
Step 2

Please select the device type (e.g. digital, analog or hybrid) you purchased and click "Next".



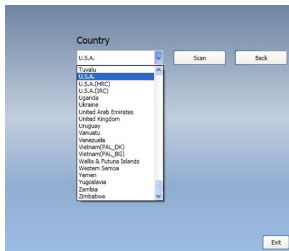
Step 3

Select the signal source (the signal strength may vary depending on the product you purchased and the area you live), and click "Next".



Step 4

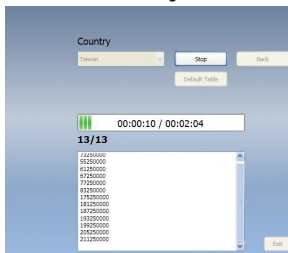
Please select the country where do you live then click "Scan".



Step 5

Click "Exit" to finish the setup process after scanning completed.

Note: you may load in default channel list to watch TV without the waiting time for channel scanning.



Step 6

Finally, you will see all the available channels listed and start enjoying this product.

