

Specification

Hardware

Processor : Intel D2550 1.86GHz Dual-Core processor

Memory : DDR3 4GB

Internal HDD : 3.5" SATA II x 4 Hot-swappable

I/O Interface : 2 x RJ45, 2 x USB 2.0, 2 x USB 3.0,  
1 x D-Sub VGA

LAN : 2 x 10/ 100/ 1000Mbps

Size (HxWxD) : 220 x 183.5 x 146.5 (mm)

Weight : 3.5kg excluded HDD

Max Internal Capacity : 16TB (4 x 4TB)

Front LED : 1 x PWR, 1 x SYS, 1 x EXT, 4 x HDDs, 2 x LANs

Power : External 90W power adapter

PC Operating System Support

File sharing for computers running on:

Microsoft Windows 7 32 & 64-bit  
Microsoft Windows Vista 32 & 64-bit  
Microsoft Windows XP Home SP2  
Microsoft Windows XP Professional SP3  
Mac OS X or later

Remote access & system backup to computers running on:

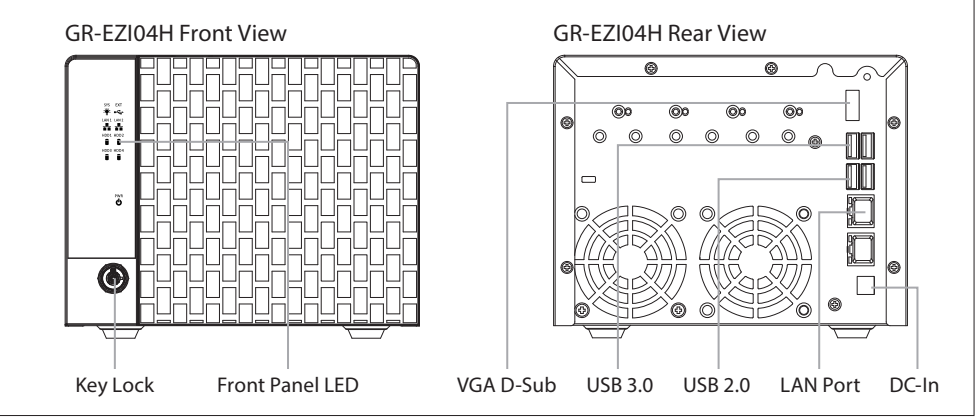
Microsoft Windows 7 32 & 64-bit  
Microsoft Windows Vista 32 & 64-bit  
Microsoft Windows XP Home SP2  
Microsoft Windows XP Professional SP3

VDI (virtual desktop infrastructure) is enabled to let users connect to system by their notebook or tablet devices, sharing applications on GR-EZI14H.

Warranty

1 year limited hardware warranty and software technical support.  
To extend warranty, please contact GIGABYTE sales team.

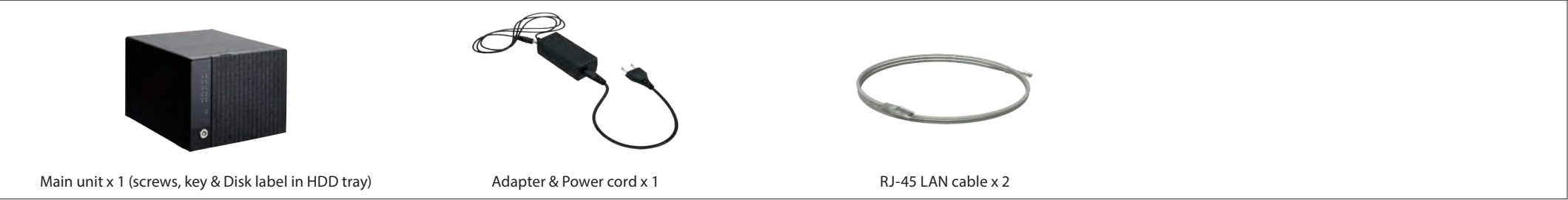
Getting familiar with your unit



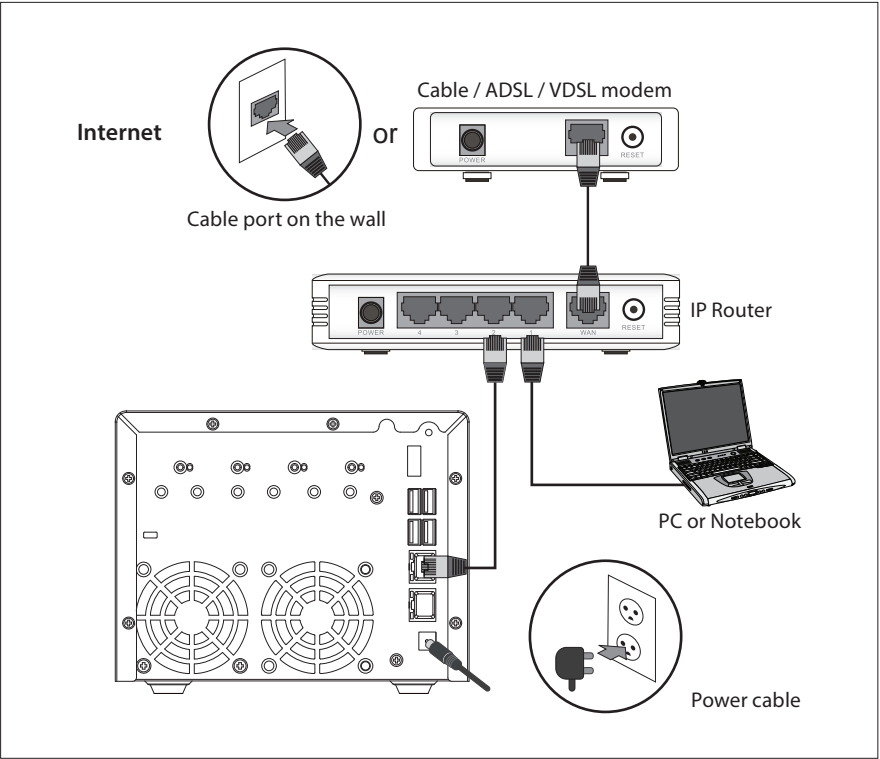
Front LED

	Description
1) System LED	Solid Blue: System is power-on
2) External LED	When device is plugged in USB 3.0 port
3~4) LAN LED	Solid Blue: Network link / Blinking Blue: Network activity
5~8) Disk LED	Solid Blue: Disk detected Blinking Blue: Disk activity
9) Power LED	Solid Blue: System power ON

Package Contents



Power & NetworkConnections



Cautions & Checklist

Back up your system periodically to avoid any potential data loss. GIGABYTE disclaims any responsibility of all sorts of data loss or recovery. Should you return any components of GR-EZI04H package for refund or maintenance, make sure they are carefully packed for shipping. Any form of damages due to improper packaging will not be compensated.

Do's and Don'ts

- GR-EZI04H can operate normally in the temperature of 5°C~35°C and relative humidity of 0%~90%. Please make sure the environment is well-ventilated.
- The power cord and devices connected to GR-EZI04H must provide correct supply voltage.
- Do not place any objects on top of the GR-EZI04H as this may cause overheating and interfere it's normal operation.
- Do not place GR-EZI04H near any liquids. Do not place GR-EZI04H on any uneven surfaces as to avoid it falling off and getting damaged.
- Do not attempt to repair your GR-EZI04H under any conditions. Improper disassembly or the product may expose you to electric or other risks.
- Use the flat head screws in the product package to secure the hard disks into the GR-EZI04H.
- Do not place GR-EZI04H in direct sunlight or near chemicals. Make sure the temperature and humidity of the environment are in optimized level.
- Risk of explosion if battery is replaced by an incorrect type. Dispose of used batteries according to the instructions.
- Unplug the power cord and all connected cables before cleaning. Wipe GR-EZI04H with a damp towel. Do not use chemical or aerosol to clean GR-EZI04H.

For any enquiries, please contact the distributor.

Installing an Internal Hard Disk

Please refer to the following figure how to install an internal hard disk of GR-EZI04H.

The diagram shows a 6-step process for installing an internal hard disk. Step 1: Open the bezel door. Step 2: Press the release button. Step 3: Pull the locking lever and remove the HDD tray. Step 4: Slide hard disk into blank. Step 5: Secure the hard drive to the tray with 4 screws as shown. Do not over tighten the screws. Slide the blank into the bay until it locks into place. Step 6: Press power button to boot up.

01. Open the bezel door.

02. Press the release button.

03. Pull the locking lever and remove the HDD tray.

04. Slide hard disk into blank.

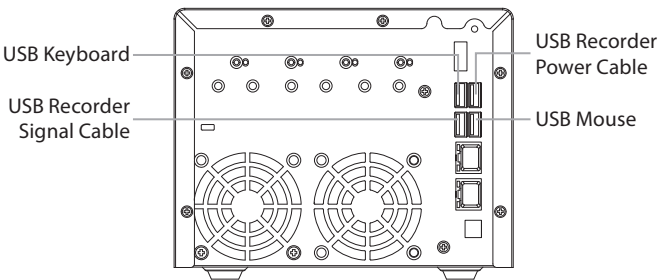
05. Secure the hard drive to the tray with 4 screws as shown. Do not over tighten the screws. Slide the blank into the bay until it locks into place.

06. Press power button to boot up.

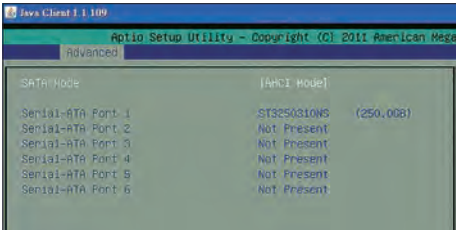
(Warning) If you install a hard disk that contains data, please back it up before installation just in case.

OS Installation Steps

- 1. Regarding USB recorder installation, please connect USB signal cable in USB 2.0 port, USB power cable in USB 3.0 port. (Blue color)
- 2. Connect USB keyboard in USB 3.0 port (Blue color) and USB mouse in USB 2.0 port, please refer to below picture.

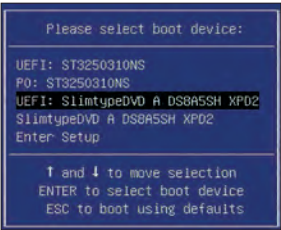


- 3. Leave one hard disk drive in HDD tray 1 and remove hard disk drives in other HDD tray.
- 4. If you have changed BIOS item “SATA Configuration”, please power-on the GR-EZI14H, then press F2 to enter BIOS setup utility menu.
- 5. Switch to “Advanced” screen and view “SATA Configuration” item.
- 6. The setting of “SATA Mode” should be “AHCI Mode”, this is factory default value, showed as following. If the setting is different, change it to “AHCI Mode”, and then save to exit.

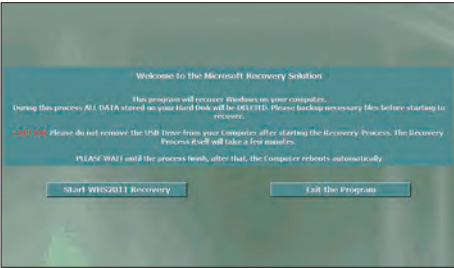


- 7. Power-off the GR-EZI14H.
- 8. Put “Windows Home Server 2011 Disc 1” into USB DVD-ROM, and connect it to GR-EZI14H.
- 9. Power-on the GR-EZI14H again, then press F10 to open boot menu.

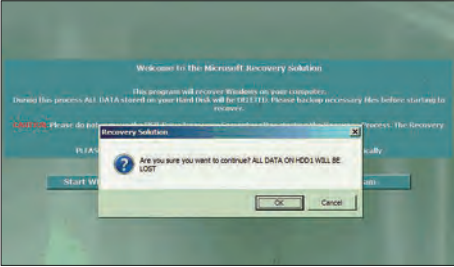
- 10. Select your USB DVD-ROM or USB DVD recorder with prefix “UEFI:” as boot device, example as following



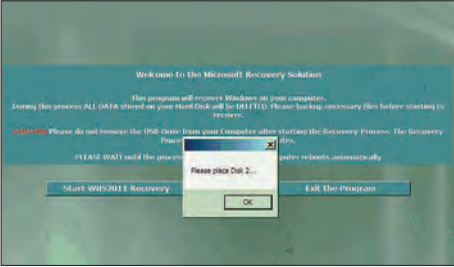
- 11. The installation screen would display after you pressed enter key.



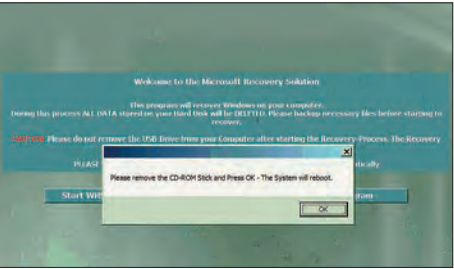
- 12. Click “Start WHS2011 Recovery” button to start, and click “OK” to confirm.



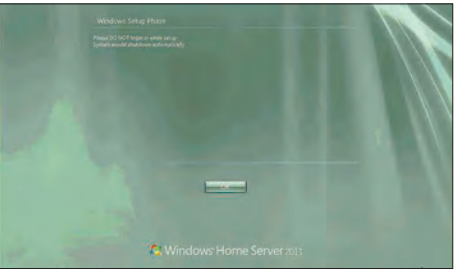
- 13. Replace “Windows Home Server 2011 Disc 2” to continue.



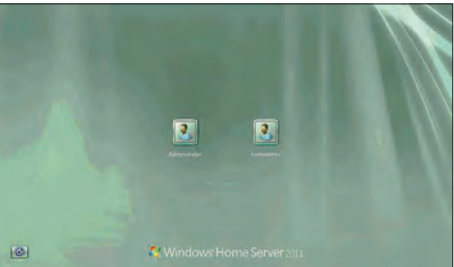
- 14. Remove DVD-ROM and click “OK” to reboot machine after installation.



- 15. It will enter the setup phase and please wait to completion.



- 16. DO NOT login while setup, and it will power-off itself after completion.



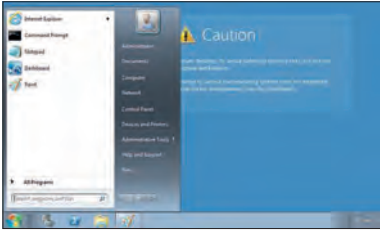
- 17. Windows Home Server 2011 OS username and password both “password”.

- 18. You can read detailed user’s manual files in the Recovery disc #2 “USER’S MANUAL” folder.

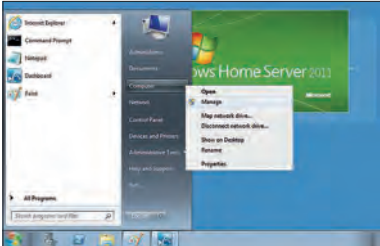
- 19. Regarding Windows Home Server 2011 operation system product key and OVD software activation code, please check the NAS chassis bottom side’s label.

Create Windows Home Server 2011 Software RAID

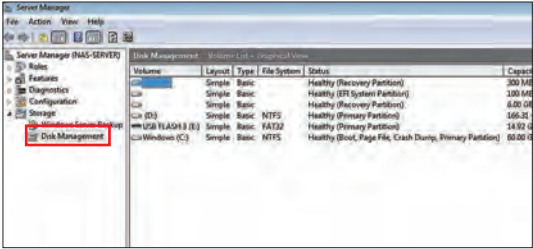
- 1. To use RAID mode, after recovery setup, install hard disk drives in other HDD tray, and then press power button to boot up the GR-EZI14H.
- 2. Click on “Start” menu and select “Computer”.



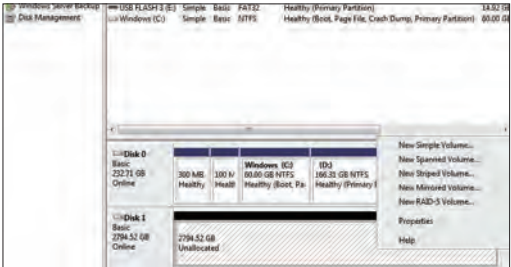
- 3. Click on USB mouse right button to open “Manage” item.



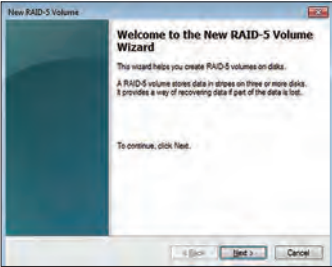
- 4. Open “Disk Management” item.



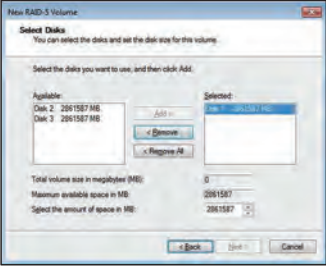
- 5. Select “Disk 1” to create RAID mode



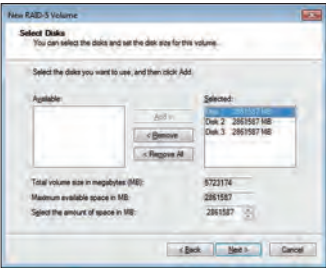
- 6. Such as New RAID-5 Volume, click on “Next” as below screenshot.



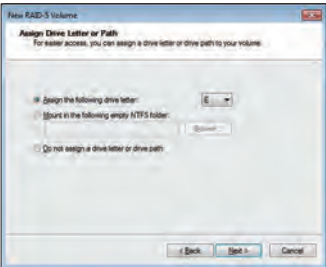
- 7. Click on “Add” to add Disk 2 and Disk 3 in “Selected:”



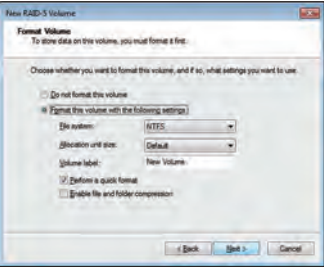
- 8. Click on “Next”.



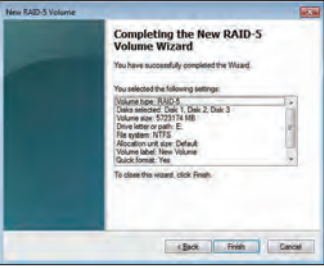
- 9. Click on “Next”.



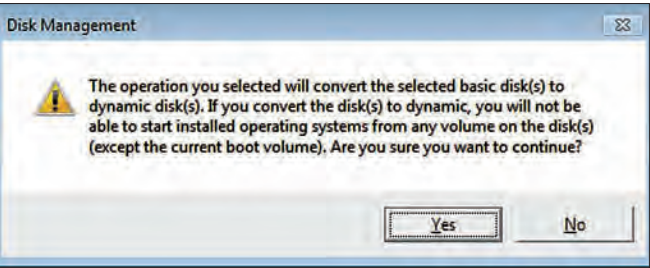
- 10. Click on “Next”.



- 11. Click on “Finish”.



- 12. After you confirmed below information, click on “Yes”.



- 13. You can see Disk 1, Disk 2 and Disk 3 resyncing.



Recovery Steps

We could restore “Windows Home Server 2011” as factory default without installation disc.

- 1. Connect keyboard and mouse to GR-EZI14H via USB.
- 2. Leave one HDD in tray 1 and remove HDDs in other tray.
- 3. Power-on the GR-EZI14H.
- 4. After the booting screen appearing, keep to press F1 until vanish.
- 5. Following steps are the same from step 11 of operation system installation.