



Getting Started Guide for Orbweb Virtual Desktop (OVD)

Information in this document is subject to change without notice. Companies, names, and data used in examples herein are fictitious unless otherwise noted. No part of this document may be reproduced or transmitted in any form or by any means, electronic or mechanical, for any purpose, without the express written permission of Kloudian Systems Inc.
Orbweb is copyright of Kloudian Systems Inc. All rights reserved.
Version 2.1.2.2 – Last updated 2011/08/27

©Kloudian Systems Inc. All rights reserved.

Table of Contents

System Requirements

Chapter 1. General Setup

Chapter 2. Activation

Chapter 3. Changing Administrator Password

System Requirements

- Supported PC Browser Clients (JRE 1.6.x Dependent):

	Internet Explorer v9.x	Firefox v13.x	Chrome v20.x	Safari v5.x
Windows	✓	✓	✓	✓
Mac		✓	✓	✓

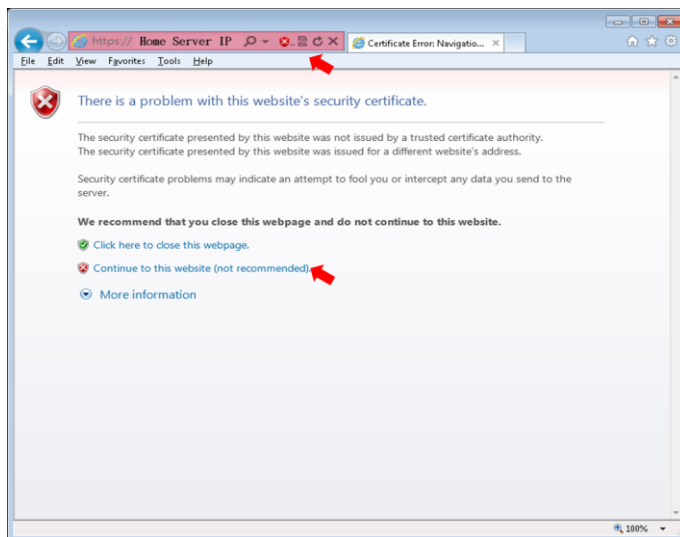
- Supported Android Tablet Client:
 - Android v2.x or above
- Supported iPad Tablet Client:
 - iOS v5.x or above

Chapter 1. General Setup

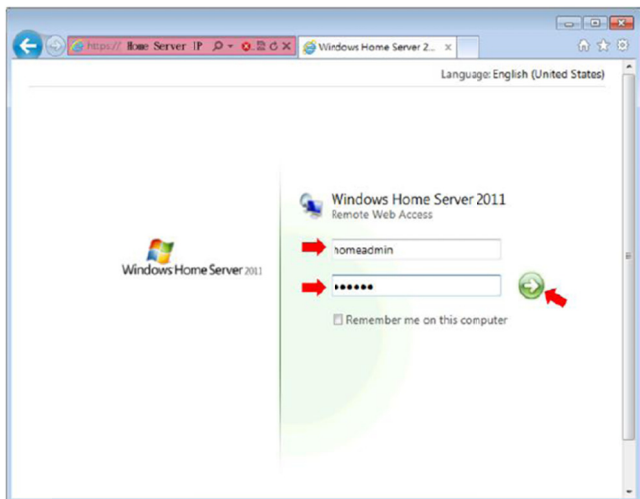
- Make sure unit powers up normally
- Make sure unit is connected to your local network
- Identify Home Server IP

**If you want to access Windows Home Server 2011 or Orbweb Virtual Desktop through internet, please refer to the Users Manual on Recovery CD*

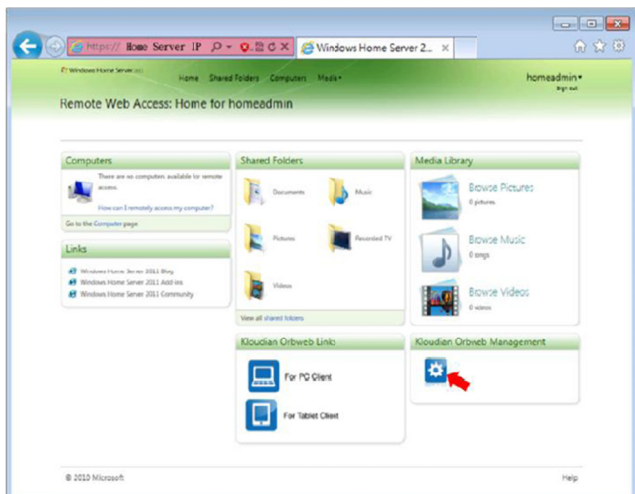
Chapter 2.Activation



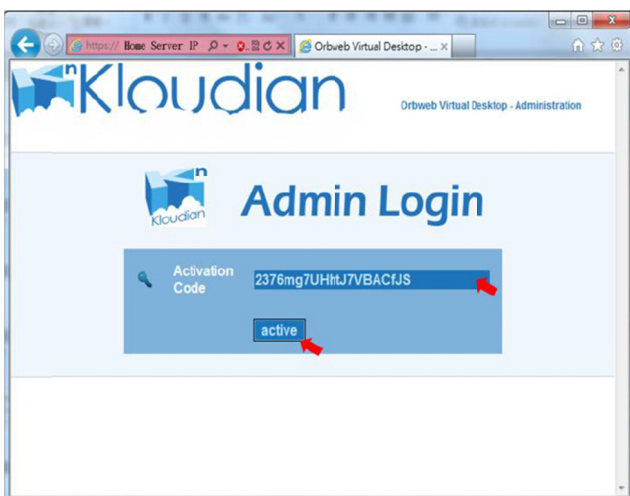
- Enter Home Server IP
- For SSL warning message, Click on “Continue to this website”



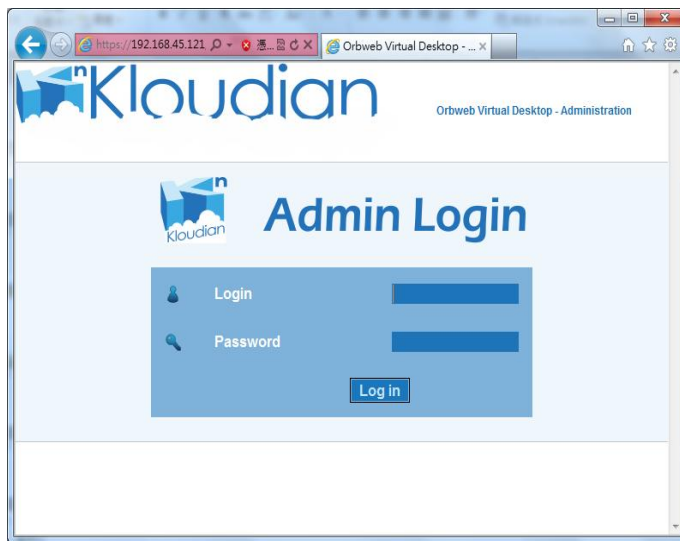
- Enter default account name and password, and then click on “Right arrow”
User name: “homeadmin”, password: “password”



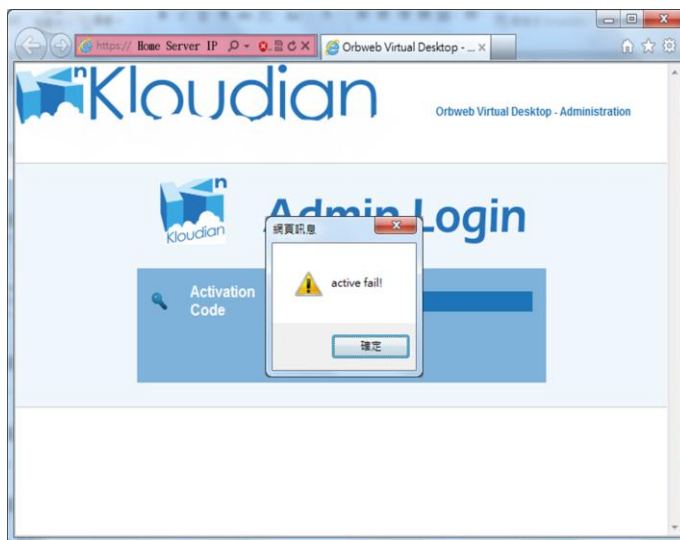
- Click “Kloudian Orbweb Management” icon



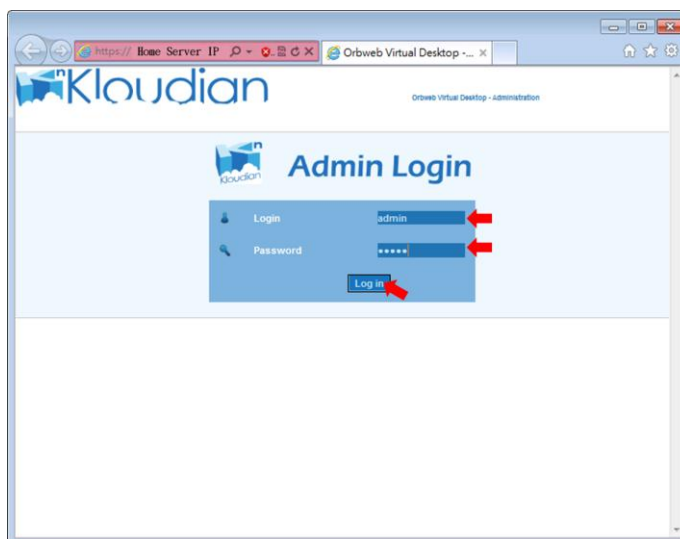
- Enter activation code (Please check the NAS chassis button side's label), and then click “active” button



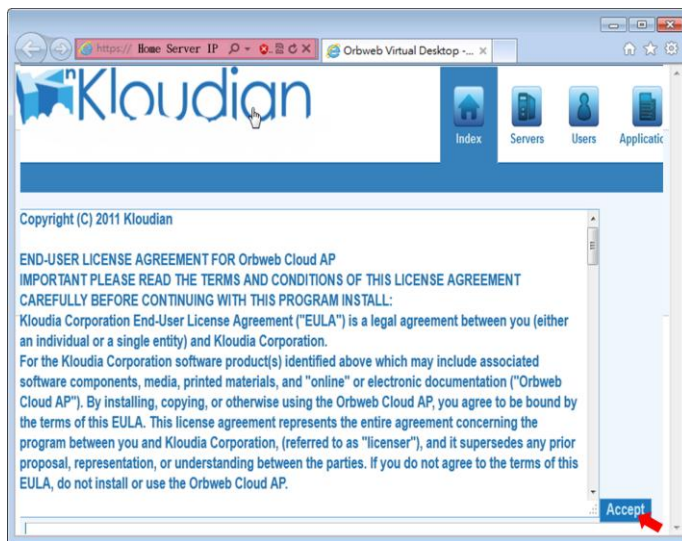
- Activation passed, when you see this page



If you see “active fail” error message,
Please double-check the entered activation code or internet connection



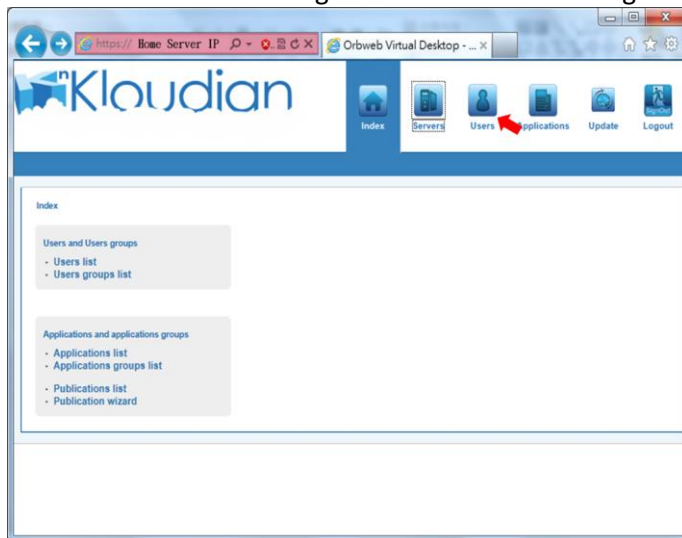
- Enter default login name and password
Login: admin, Password: admin
- Click on “Log in” button



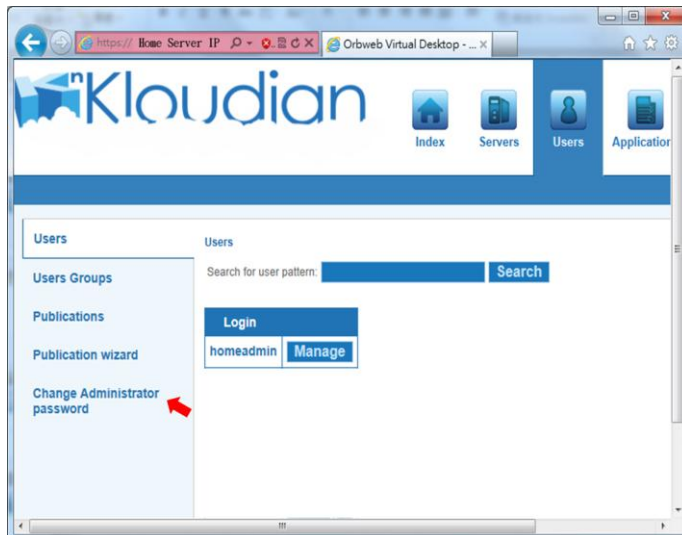
- Click "Accept" button

Chapter 3. Changing Administrator Password

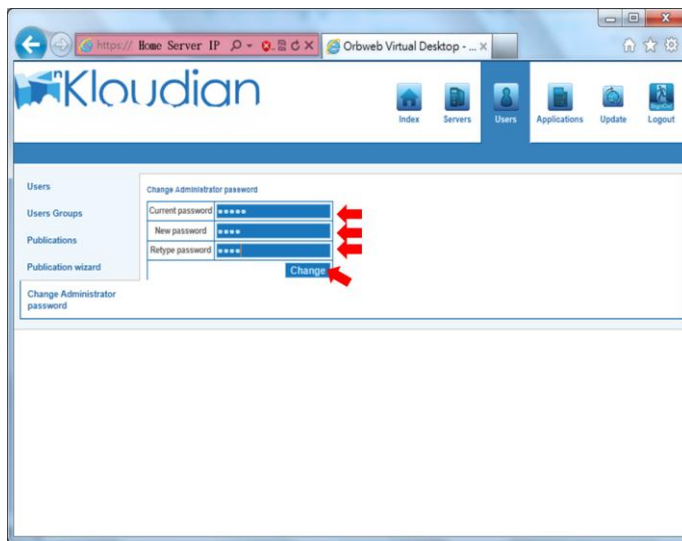
- Go to Orbweb Management Console Home Page



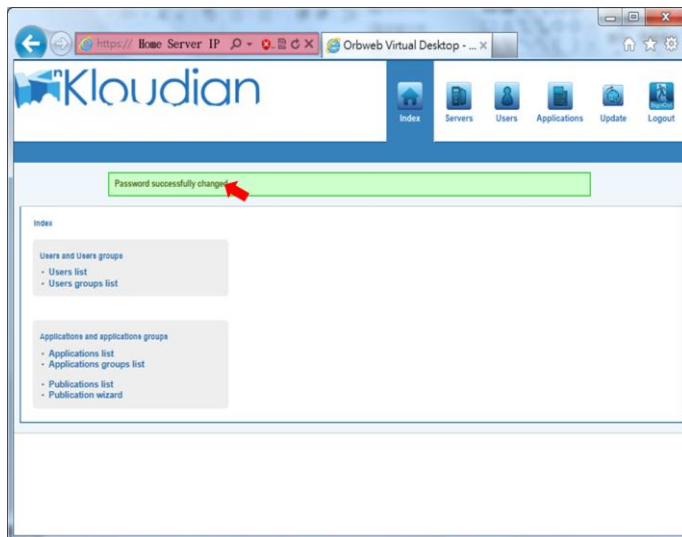
- Click "Users" button on main menu



- Select "Users" on side button



- Select “Change Administrator Password” on side menu
- Enter “Current Password”
- Type “New Password”
- Retype “New Password”
- Click “Change” button



- Confirmation page for Reset Password

For “Creating Users” and “Publishing Applications”, please refer to the user manual Chapter 4 and 5

Product Description

Orbweb Virtual Desktop(OVD)

OVD virtualizes desktop images and runs them on centralized servers. Users can access these desktop images from any location through computers or thin clients or mobile devices.

OVD Management Console

OVD provides a very simple web based Management System for user and application configurations without professional IT expertise. The intuitive GUI makes provisioning of OVD application services up and running just in a snap.

Administrator(homeadmin)

Your home server only has one user account set up on it: the admin account, the reason for this is to prevent every users from changing any settings which can make accounts unmanageable. Administrator is assigned with the highest level of control over the entire account., including setting permissions, banning users, creating user group(s) or application group(s), publishing applications etc.,

End User FAQ

Why can't I login?

There are several reasons why this could occur.

1. Ensure your username and password are correct.
2. You have reached the maximum number of concurrent connections. **kill session*
3. If you see the error message below

Server: session closed unexpectedly

Please contact administrator and try to reset **“Server Agent”** (**Stop_service/Start_service**) from Orbweb Management console or **reboot the computer**.

I've lost my password!

Contact the administrator for the assistance.

I want to change my password

Please refer to the user's manual page.XX

Why am I not able to access my USB driver from within OVD?

1. Make sure your USB volume name is not in the language other than English
2. Current Orbweb version is not supported Android and Mac OS

Can I run graphics-intensive applications with VDI-in-a-Box?

Yes, however the performance is highly dependent on hardware resource availability from the host server(s) on which virtual machines are running.

Why is my video playback not smooth under Orbweb VDI?

Multimedia video playback through the current version of Orbweb virtual desktop is not recommended. It is recommended that the WHS.2011 video streaming provided by the WHS 2011 dashboard be used.

How do I find my IP address (internal and external)?

You can find them through Router GUI(Graphic User Interface)

Can I print remotely?

Yes, you can easily print remote files to the local printer

How do I install applications?

Please refer to use's manual page.[XX](#)

How can I connect to OVD using a browser?

First, you need to configure your router to update the DDNS server with your dynamically changing IP address, and open the ports necessary to access your resources from the Internet. Secondly, you need to configure the DDNS(Dynamic Domain Name System) through Home Server Dashboard(please refer to the user's manual page.[XX](#))

Does OVD support Smartphones or Tablet computers?

Yes, you can connect to Orbweb portal through Home Sever Dashboard or with Kloudian client which now are available on Market Place and Apple Store

Administrator FAQ

What are user group(s)?

User group(s) are groups of users that divide the community into manageable sections can work with. Each user can belong to several groups and each group can be assigned individual permissions. This provides an easy way for administrators to change permissions for many users at once, such as granting users access to certain applications.

What are application group(s)?

Application group(s) are groups of applications that divide the community into manageable sections can be used. Each application can belong to several groups and each group can be assigned individual permissions. This provides an easy way for administrators to change permissions for many applications at once, such as granting certain applications to be used by certain users.

What are default user group and application group?

The manufactured default user and application group can not be deleted, and are automatically assigned to administrator rights to perform specific actions;

How many concurrent users can Home Server handle?

The default number of concurrent Orbweb virtual desktop users is two (2) as defined by Microsoft's® licensing policy. Notwithstanding license compliance, the maximum number of concurrent Orbweb virtual desktop users is hardware and network infrastructure dependent. Please consult (your sales professional) for details.