

GIGABYTE™

Q35 USER'S MANUAL
使 用 手 冊

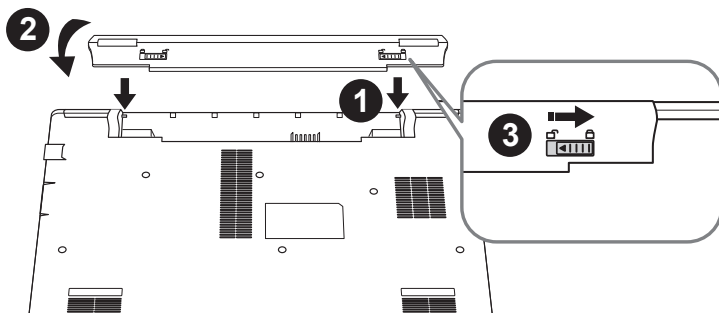
English —
繁體中文 —

Q35 V1.0

Congratulations on your purchase of the GIGABYTE Notebook.

This manual will help you to get started with setting up your notebook. The final product configuration depends on the model at the point of your purchase. GIGABYTE reserves the right to amend without prior notice. For more detailed information, please visit our website at www.gigabyte.com.

Using GIGABYTE Notebook for the First Time

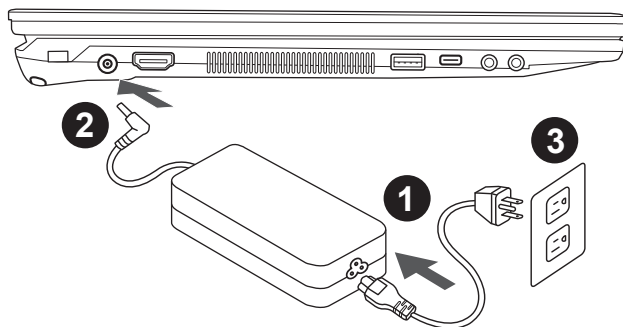


To install the battery please follow these steps:

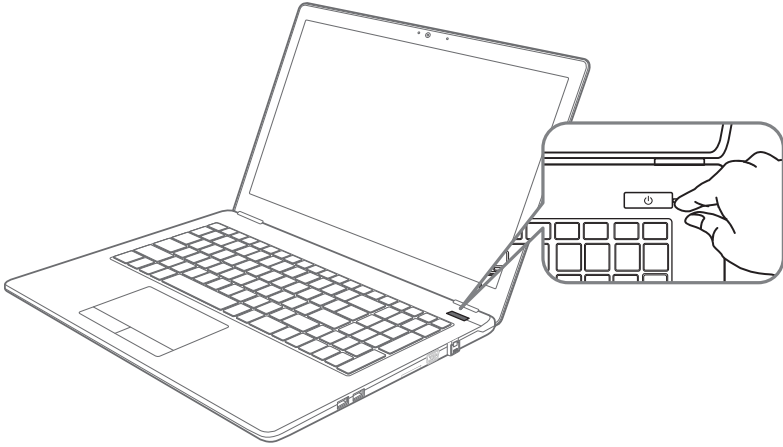
- 1 Target the battery's direction into the tenon-mortise.
- 2 Circulate the battery downwards until hearing the "snap" sound to lock the battery.
- 3 Remember to slide the switch to the "Lock" position.

Important

- Ensure that your Notebook PC is connected to a grounded power adapter before turning it on for the first time.
- When using your Notebook PC on power adapter mode, the socket outlet must be near to the unit and easily accessible.
- Locate the input/output rating label on your Notebook PC and ensure that it matches the input/output rating information on your power adapter. Some Notebook PC models may have multiple rating output currents based on the available SKU.
- Power adapter information: Input voltage: 100-240Vac , - Input frequency: 50-60Hz , - Rating output voltage: 19V, 2.1A



- 1 Connect the the power cord to the AC adapter.
- 2 Connect the AC adapter to the DC-in jack on the left side of the notebook.
- 3 Connect the power cord to the power outlet.



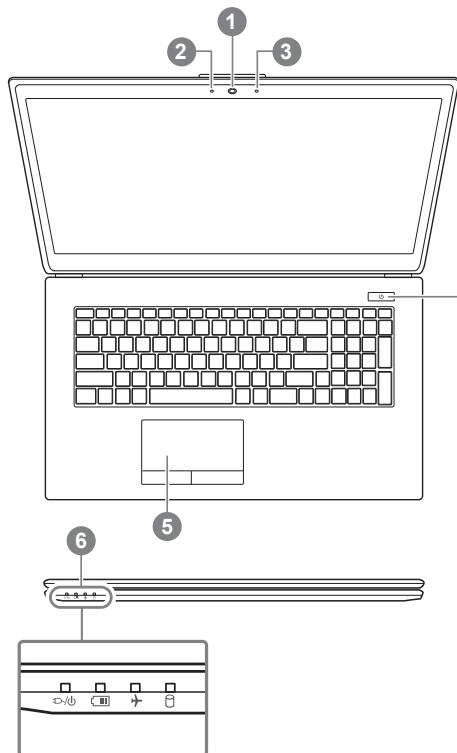
Switching on the Power

After you turn on the Notebook for the very first time, do not turn it off until the operating system has been configured. Please note that the volume for the audio will not function until Windows® Setup has completed.

Booting Up the Notebook for the First Time

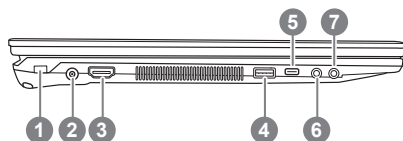
Depending on your configuration, the Microsoft® Windows® Boot Screen will be the first screen that you will see as the notebook starts up. Follow the on-screen prompts and instructions and enter your personal information to complete the setup of the Windows® Operating System.

Top View



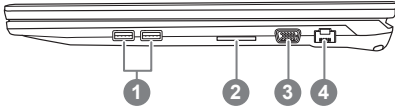
- 1 Webcam
 - 2 Webcam on/off Indicator
(The indicator will be white while the webcam on)
 - 3 Microphone
 - 4 Power Button
 - 5 TouchPad
 - 6 LED Indicators ①
- ① Power on/Suspend Status
 Battery Status LED
 Airplane Mode Status LED
 HDD Status LED

Left View



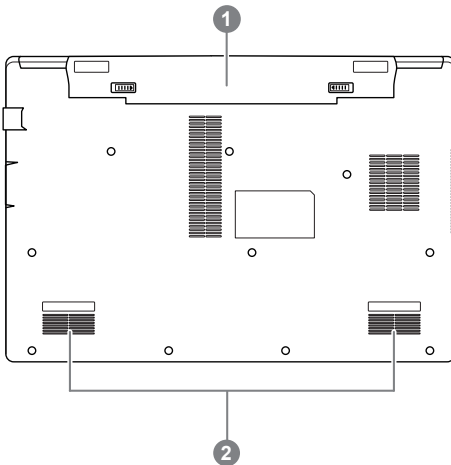
- 1 Kensington Lock Port
- 2 DC-In Jack
- 3 HDMI Port
- 4 USB 3.0
- 5 USB 3.0(TYPE C)
- 6 Microphone Jack
- 7 Headphone&S/PDIF-Out Jack

Right View



- 1 USB 2.0
- 2 Flash Memory Card Reader
- 3 D-sub (VGA) Port
- 4 RJ-45 LAN Jack

Bottom View



- 1 Battery
- 2 Speakers



Warning:

- Do not install the Notebook PC on a slant or a place prone to vibrations, or avoid using the Notebook PC in that location for a long time. This increases the risk that a malfunction or damage to the product will occur.
- Do not store and use Notebook PC in direct sunlight or the location where temperatures exceed 112°F (45°C) such as inside a vehicle. There is a danger of Lithium-ion battery expansion and aging.
- Do not use the Notebook PC in a badly ventilated location such as on bedding, on a pillow or cushion, etc, and do not use it in a location such as room with floor heating as it may cause the computer to overheat. Take care that the Notebook PC vents (on the side or the bottom) are not blocked especially in these environments. If the vents are blocked, it may be dangerous and cause the Notebook PC to overheat.

Hotkeys

The computer employs hotkeys or key combinations to access most of the computer's controls like screen brightness and volume output. To activate hotkeys, press and hold the <Fn> key before pressing the other key in the hotkey combination.

Hotkey	Description
<i>Fn+~</i>	Play/ Pause(in Audio/Video Programs)
<i>Fn+F1</i>	Touchpad Toggle
<i>Fn+F2</i>	Backlit Keyboard Toggle
<i>Fn+F3</i>	Mute Toggle
<i>Fn+F5/F6</i>	Volume Decrease/Increase
<i>Fn+F7</i>	Display Toggle
<i>Fn+F8/F9</i>	Brightness Decrease/Increase
<i>Fn+F10</i>	PC Camera Power on and off
<i>Fn+F11</i>	Airplane Mode Toggle
<i>Fn+F12</i>	Sleep Toggle
<i>Fn+ NumLK</i>	Number Lock Toggle
<i>Fn+ScrLK</i>	Scroll Lock Toggle
<i>Caps Lock</i>	Caps Lock Toggle

Smart USB Backup Guide (Original: Recovery Image USB)

⚠ WARNING

- You can backup original recovery image through this application in case of losing by device damage.
- You can backup original recovery image to USB disk and restore the system if any storage system replacement with the recovery USB disk.
- Before you restore the system through the recovery USB disk, please make sure that you have already made the backup of your data.
- Please DO NOT shut down or un-plug the system when performing backup through recovery USB disk.

1



- Please plug in the USB disk which is at least 20GB in capacity to make the original image (backup the data in USB first. All data will be eliminated during the creation of recovery USB disk)

2



- Insert the driver disk to your optical drive and run the install of “Smart USB Backup” (for none-ODD model, please use USB ODD device or download from <http://www.gigabyte.com>)

3



- Run the “Smart USB Backup” after finishing the install.

4



- Select your USB disk from the drop-down list and start to create the recovery USB disk.

5

- The window will pop out when the creation of recovery disk is done.
- Please press F12 on starting the system when you need to restore the system. Select “boot from recovery USB disk” and the system will be restored.
- The time needed for restore will be around 30 mins(time needed may vary by USB disk model) .

Recovery Guide

System Recovery (Restore your laptop operating system)

When something is going wrong with the laptop operating system, the storage of the laptop has a hidden partition containing a full back up image of the operating system that can be used to restore the system to factory default settings.



Note

- If the storage has been switched or the partition deleted, the recovery option will no longer be available and a recovery service will be needed.
- The recovery function is only available on devices with O/S preinstalled. Devices with DOS do not have the recovery function.

Launch System Recovery

The system recovery feature is preinstalled before the laptop is shipped from the factory. The option menu allows you to launch the Windows recovery tool to reinstall the operating system to factory default.

The brief introduction below will show you how to start the recovery tool and restore your system.



All ready to go

Make sure your PC is plugged in. This will take a few minutes.

Windows 10 Recovery Guide

- 1 Turn off and restart the laptop.

- 2



During the laptop turn on process, press and hold F9 key to launch the tool.

- 3



Choose “Troubleshoot” to enter the recovery settings. (Also you can choose “Continue” to exit recovery system and continue to Windows 10 for files or data backup.)



There are two options for system recovery

- **Reset this PC**

You can choose to keep or remove your files and then reinstalls Windows without losing your files.

- **GIGABYTE Utility**

Your PC settings will be restored to factory default settings.

Caution: All personal data and files will be lost.

4



■ Choose “Reset this PC”

► Keep my files

Choose an account to continue. All apps will be removed, and settings will back to pure O/S (without GIGABYTE app), but your personal files will be kept.

► Remove everything

All apps, setting and personal files will be removed.

⇒ Just remove my files

Only personal data and files will be removed, but computer settings will be kept.

⇒ Fully clean the drive

The drive will be completely restored to factory default settings. It takes more time. > [Click on “Reset” to execute recovery function.]



Here are what will happen

- All of your personal files and apps will be removed.
- Your PC settings will be restored to pure O/S (without GIGABYTE app) .



■ Choose “GIGABYTE Utility”

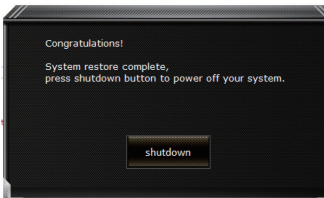


The recovery will be activated and you will see the option buttons on the window. Click on “Yes” to start it.



Caution

- Once the “Recovery” is selected, your personal data and files will be deleted after the laptop starts restoring, and the operating system will be reset to factory default settings.
- A progress indicator bar will show on the window when the recovery process is running. Please make sure the AC-adaptor is plugged in and do not turn off the laptop.



After the system recovery is completed, you will see the option button on the window, please click on “Shutdown”.



■ Advanced options



System Restore

Use a restore point recorded on your PC to restore Windows.



System Image Recovery

Recover Windows using a specific system image file.



Startup Repair

Fix problems that keep Windows from loading.



Command Prompt

Use the Command Prompt for advanced troubleshooting.



UEFI Firmware Settings

Change settings in your PC's UEFI firmware.



Startup Settings

Change Windows Startup behavior.

Appendix

■ **Warranty & Service:**

Warranty and service and related information please refer to the warranty card or GIGABYTE service website as the below link:

<http://www.gigabyte.com/support-downloads/technical-support.aspx>

■ **FAQ:**

FAQ (Frequent Asked Questions) please refer to the below link:

<http://www.gigabyte.com/support-downloads/faq.aspx>

■ **Full User Manual:**

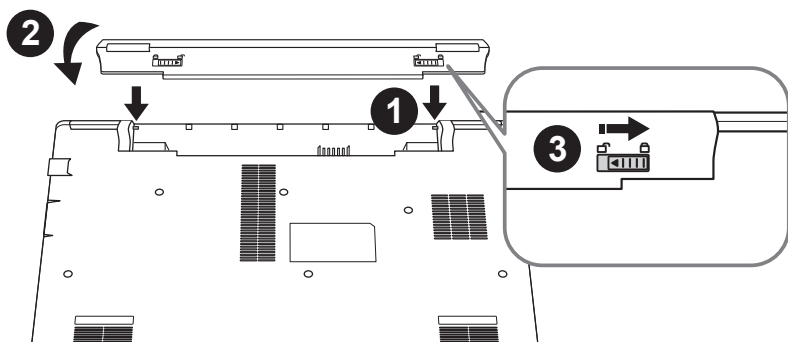
For more user guide and software instruction, please refer to the below link:

<http://www.gigabyte.com/support-downloads/download-center.aspx>

感謝您選擇技嘉筆記型電腦

為協助您順利使用技嘉筆記型電腦，我們特地設計此快速安裝說明。如果您需要更多關於電腦功能，歡迎上技嘉官方網站 www.gigabyte.tw 查詢。產品實際規格以出貨為準，如有異動恕不另行通知。

首次使用GIGABYTE技嘉筆記型電腦

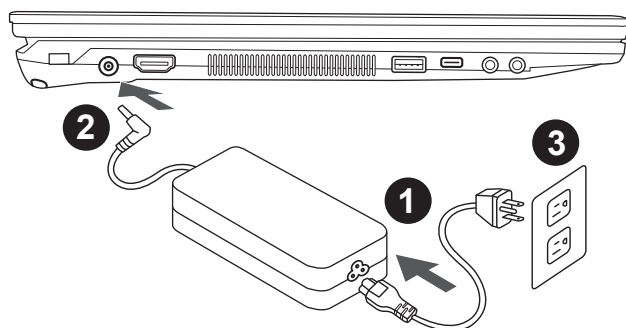


請依下列步驟裝入電池：

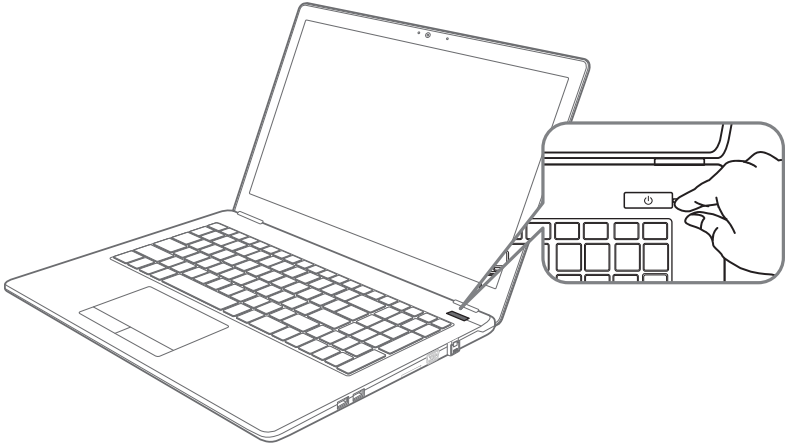
- 1 將電池依指示方向對準插入卡榫。
- 2 往下旋轉直到"喀"的一聲，即電池已裝妥。
- 3 接著將卡榫推至LOCK處。

⚠ 重要

- 第一次啟動筆記型電腦之前，請先確認已經將電源變壓器連接至電腦。
- 找出筆記型電腦的輸入/輸出頻率標籤，並請確認符合電源變壓器上的輸入/輸出頻率資訊。
- 當筆記型電腦在電源變壓器使用模式時，請將電源變壓器靠近插座以方便使用。
- 電源變壓器資訊：輸入電壓：100-240Vac，輸入頻率：50-60Hz，輸出電壓功率：19V, 2.1A



- 1 將電源線上接電源轉換器。
- 2 將電源轉換器連接到電腦的電源插孔。
- 3 將電源線插入電源插座。



開啟筆記型電腦

電源指示燈會顯示機器是否為通電的狀態。

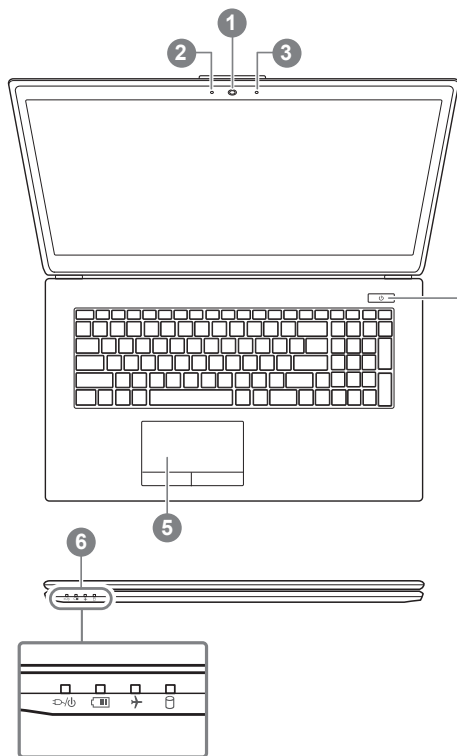
第一次開機時，在還未完全進入作業系統前請勿強制關機。開啟電源後，直到該作業系統配置完成前，音量無法設定。

開始第一次使用

根據您的筆記型電腦配置，當您第一次開機，第一個畫面會是微軟Windows.啟動畫面，按照該螢幕上的提示和指示，完成作業系統的配置。當軟體許可條款顯示時，請務必閱讀並同意後再繼續。

GIGABYTE 技嘉筆記型電腦導覽

上視圖



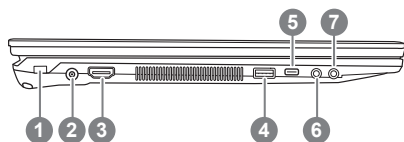
- 1 視訊攝影機
 - 2 視訊攝影機開或關的燈號指示
(當攝影機開啟時，燈號會顯示白色)
 - 3 麥克風
 - 4 電源開關
 - 5 觸控板
 - 6 LED 狀態指示燈 ❶
- ❶ 電源/待機狀況指示燈
 電池充電指示燈
 飛航模式指示燈
 硬碟存取指示燈

警語：使用過度恐傷害視力。

注意事項：

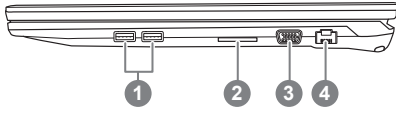
- (1) 使用30分鐘請休息10分鐘。
- (2) 2歲以下幼兒不看螢幕，2歲以上每天看螢幕不要超過1小時。

左視圖



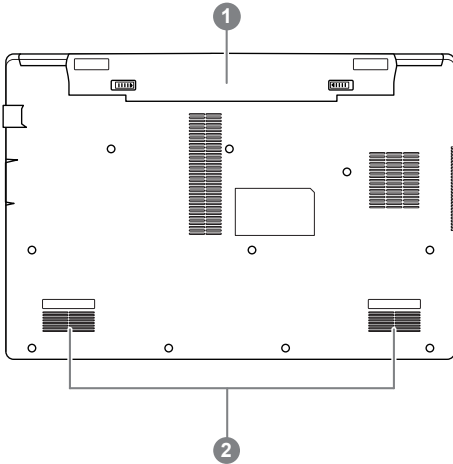
- 1 Kensington防盜鎖孔
- 2 DC-In Jack
- 3 HDMI埠
- 4 USB 3.0
- 5 USB 3.0(TYPE C)
- 6 麥克風插孔
- 7 耳機&S/PDIF-Out插孔

右視圖



- 1 USB 2.0
- 2 多合一記憶卡插槽
- 3 外接顯示器 (VGA) 埠
- 4 乙太網路(LAN)埠

底部圖



- 1 電池
- 2 喇叭



警告

- 請不要於斜面上或容易震動的地方使用筆記型電腦，以降低發生故障和產品損壞的風險。
- 請勿置於車內、室內外陽光強烈或高於45度C之儲藏環境，以免鋰電池發生老化或膨脹等危險。
- 請於通風良好的地方使用此產品。請勿在床上、枕頭等通風不良的地方使用此產品，並且不要在有樓板暖氣的地方使用，避免導致筆記型電腦過熱。請避免底部和側邊的通風孔阻塞。如果通風孔阻塞，會有損害筆記型電腦或導致內部過熱的危險。

快速鍵

許多電腦的設定例如螢幕亮度、喇叭音量等可利用電腦的快速鍵直接調整。如需使用快速鍵，請依下表先按住 <Fn> 鍵，再按下 <F1>~<F12> 等按鍵。

快速鍵	功能敘述
Fn+~	在影音播放程式中啟動與暫停
Fn+F1	觸控板開關
Fn+F2	背光亮度調整
Fn+F3	喇叭靜音
Fn+F5/F6	減弱/增大音量
Fn+F7	螢幕切換
Fn+F8/F9	螢幕亮度減弱/增強
Fn+F10	PC鏡頭開關
Fn+F11	飛航模式開關
Fn+F12	睡眠開關
Fn+ NumLK	數字鍵切換
Fn+ScrLK	滾動鎖切換
Caps Lock	英文大小寫切換

Smart USB Backup 使用說明(原Recovery Image USB)

6

繁體中文



- 為避免儲存裝置毀損導致原廠的還原映像檔遺失，您可以透過此軟體來備份原廠的還原映像檔
- 如果您想更換新的儲存裝置，您可以透過此軟體將原廠還原映像檔備份至 USB 隨身碟，安裝好新的儲存裝置後，再將出廠的預設系統倒回新儲存裝置。
- 使用本軟體所製作的還原 USB 隨身碟 將系統還原以前，請先做好資料備份，以免資料流失。
- 利用還原 USB 隨身碟進行系統還原時，請勿移除或關掉電源。

1



- 若要製作原廠映像檔的還原 USB 隨身碟，請先插入容量至少有 20GB 的 USB 隨身碟 (請先將 USB 隨身碟裡原有的資料備份，避免因下述操作造成 USB 隨身碟裡的資料遺失)

2



- 放入驅動程式光碟，執行安裝” Smart USB Backup”。(無內建光碟機的機種，請外接 USB 光碟機；若光碟內沒有軟體，請上 <http://www.gigabyte.com> 下載)。

3



- 安裝完成後，執行桌面上的” Smart USB Backup”。

4



- 從清單中選取剛剛插入的 USB 隨身碟，然後選擇建立還原 USB。

5

- 跳出結束視窗後即完成。
- 若要還原您的系統，請在開機時按 F12，選擇用【USB 隨身碟開機】，【USB 隨身碟】會自動完成還原您的系統。
- 還原時間約需 30 分鐘 (所需時間會因 USB 隨身碟種類而有所不同)。

系統還原使用說明

系統還原（修復您的筆記型電腦作業系統）

當作業系統使用上出現不穩定的情況，筆記型電腦原廠出貨的儲存裝置裡有一個隱藏磁區，其內容為作業系統的完整備份映像檔，可以用來救援系統將儲存裝置裡的作業系統還原到出廠預設值。



注意

- 如果儲存裝置有被更換過或刪除該隱藏磁區，還原功能將無法使用，需送維修中心還原。
- 出廠規格為預搭作業系統時才有此還原功能，若是 DOS 銷售則不提供此功能。

啟動系統還原

系統還原功能是筆記型電腦出廠時被預先安裝的。該選項可以啟動 Windows 故障還原工具，重新安裝作業系統為出廠預設值。

以下為簡要介紹如何啟動還原工具，並開始還原系統。



執行還原前請注意

確認筆記型電腦已接上外接電源，還原系統會花費幾分鐘的時間。

Windows 10 系統還原說明

1

關機並重新啟動筆記型電腦。

2



啟動筆記型電腦後，按著 F9 按鍵幾秒鐘以啟動還原工具。

3



選擇“Troubleshoot”進入系統還原及進階選項。

（您也可以選擇“Continue”直接進入 Windows 10 作業系統，先行備份個人資料與檔案再作還原。或選擇“Turn off your PC”關機並重新啟動筆記型電腦。）



系統還原有兩種方式可供選擇

- **Reset this PC - 重設電腦設定值**
如果電腦因軟體或設定值不佳而不穩定，您可以選擇移除或保留個人檔案，在重設電腦設定值而不遺失個人檔案。
- **GIGABYTE Utility - GIGABYTE 應用程式**
筆記型電腦的設定值會被還原成出廠預設值。
注意：將會遺失所有的個人資料與檔案。

4



Reset this PC - 重設電腦設定值

► Keep my files - 保留個人檔案

選擇一個使用者帳戶後繼續。所有應用程式會被移除，設定值會還原成單純的 O/S (不含 GIGABYTE 應用程式)，但個人檔案會被保留。

► Remove everything - 移除所有項目

所有應用程式、設定值和個人檔案將會被移除。

⇒ Just remove my files - 只移除個人檔案

只移除個人檔案，但保留電腦設定值。

⇒ Fully clean the drive - 完整還原

完整還原儲存裝置至出廠設定值，會花費較長的還原時間。

>【按下“Reset”執行】。



注意事項

- 您所有的個人檔案與應用程式將會被移除。
- 所有的電腦設定值將會被還原成單純的 O/S (不含 GIGABYTE 應用程式)。



GIGABYTE Utility - GIGABYTE 應用程式

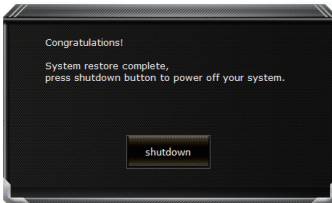


進入重置系統模式，工具列會有還原選項，如您確定要系統還原，點選“是”執行。



注意事項

- 一選擇還原後，所有原本的個人資料與檔案將被刪除，並還原系統及儲存裝置至出廠預設值。
- 還原視窗開啟並進行系統還原，在這之時請確認接上變壓器確保電力無虞，並請勿關閉電源。



當系統還原完成後，工具列會有選項，請點選“關機”



■ Advanced options 其它或進階選項

更多系統還原的進階設定。



System Restore 系統還原

選擇系統還原的記錄時間，將系統還原至該時間點。



System Image Recovery 系統備份還原

使用之前備份的系統備份資料還原 Windows 系統。



Startup Repair 啟動修復程序

修復及解決 Windows 系統問題。



Command Prompt 命令提示字元

使用命令字元集執行進階的疑難排解。



UEFI Firmware SettingsUEFI BIOS 設定

重新啟動，變更 UEFI BIOS 設定值。



Startup Settings 啟動設置

變更 Windows 啟動設定。

■ 保固及客服資訊：

相關保固條款及客服資訊請參考隨貨所附之保固保證書，或參考技嘉技術服務區網站。

<http://www.gigabyte.tw/support-downloads/technical-support.aspx>

■ FAQ：

相關常見問題請參考技嘉常見問題網站。

<http://www.gigabyte.tw/support-downloads/faq.aspx>

■ 完整使用說明書：

詳細筆電使用說明與軟體操作說明，請至技嘉 Download-Center 下載電子說明書。

<http://www.gigabyte.com/support-downloads/download-center.aspx>