

GIGABYTE™

Q2442

USER'S MANUAL

使 用 手 冊

● English

V3.0

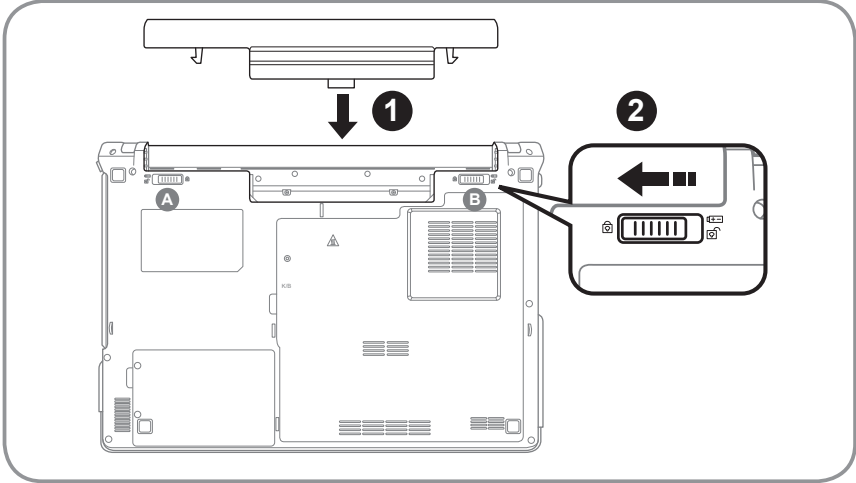


* Images Used for Reference Only

Congratulations on the Purchase of Your New GIGABYTE Notebook Q2442!

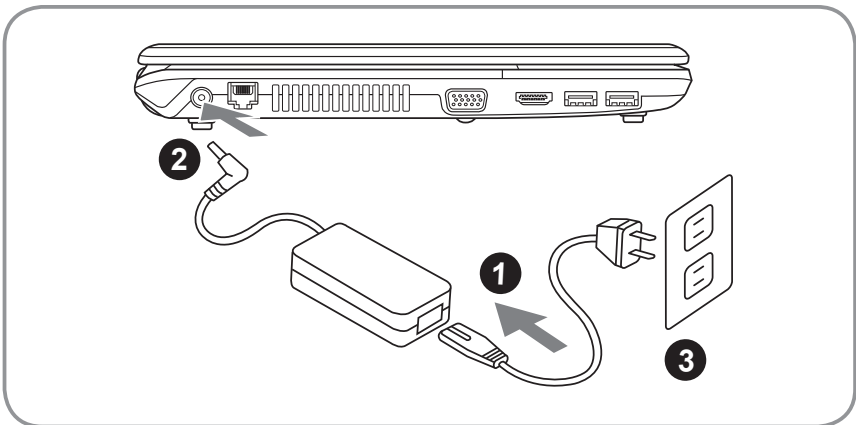
This quick start guide will help you to get started with setting up your notebook. For more detailed information, please visit our website at www.gigabyte.com. All specifications are subject to the manufacturer's configuration at the time of shipping and may change without prior notice, written or otherwise.

1 Using GIGABYTE Notebook for the First Time

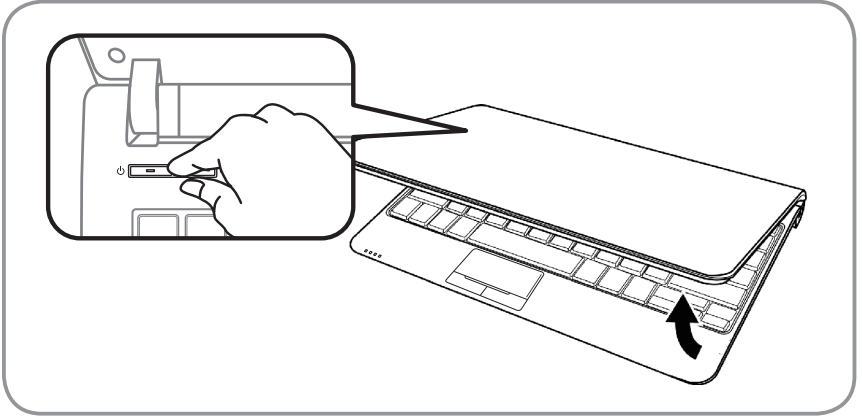


To install the battery please follow these steps:

- 1 Slide the battery into the slot until both latches (Shown as **A** & **B**) "click" into place. You may hear a "clicking" sound, once the battery is secure.
- 2 Slide latch **A** to the left to lock the battery in place.



- 1 Connect the the power cord to the AC adapter.
- 2 Connect the AC adapter to the DC-in jack on the left side of the notebook.
- 3 Connect the power cord to the power outlet.



Switching on the Power :

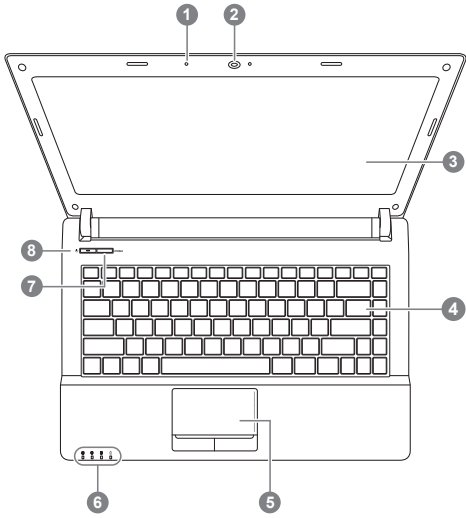
After you turn on the Q2442 for the very first time, do not turn it off until the operating system has been configured. Please note that the volume for the audio will not function until Windows® Setup has completed.

Booting Up the Q2442 for the First Time :

Depending on your configuration, the Microsoft® Windows® Boot Screen will be the first screen that you will see as the notebook starts up. Follow the on-screen prompts and instructions and enter your personal information to complete the setup of the Windows® Operating System.

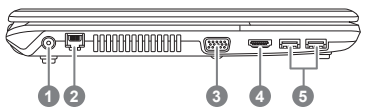
2 Your GIGABYTE Notebook Tour

Top View



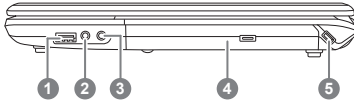
- 1 Built-In Microphone
 - 2 Webcam
 - 3 LCD Display
 - 4 Keyboard
 - 5 TouchPad
 - 6 LED Indicators **1**
 - 7 Super POSH Button
 - 8 Power Button
- 1** ✨ Power Status LED
 - 📶 Wireless Lan Status LED
 - 🗄 HDD Status LED
 - 🔋 Battery Status LED

Left View



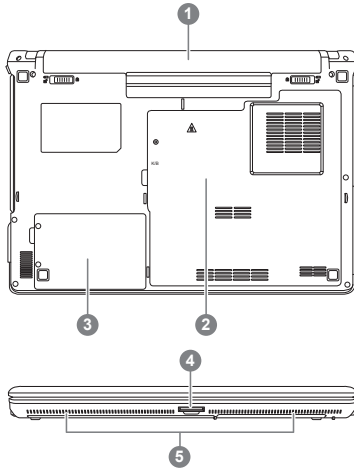
- 1 DC-in Jack
- 2 LAN (RJ-45) Port
- 3 External Monitor (VGA) Port
- 4 HDMI Port
- 5 USB3.0 Port

Right View



- 1 USB2.0 Port
- 2 Headphone Jack
- 3 Microphone Jack
- 4 Optical Disc Drive
- 5 Kensington Lock Slot

Base View & Front View



- 1 Battery Bay
 - 2 Memory, CPU compartment
 - 3 HDD Compartment
 - 4 Multi Card Reader ^②
 - 5 Speakers
- ^② 6-in-1 Card Reader Supports :
- Secure Digital (SD)
 - SDXC
 - SDHC
 - Memory Stick (MS)
 - Multi Media Card (MMC)
 - Memory Stick PRO (MS PRO)

3 Hotkeys

The keyboard has a numeric keypad for easy numeric data input. Pressing the Fn + NumLk keys turns on/off the numeric keypad. It also features function keys to allow you to change operational features instantly. The function keys (F1~F11) will act as hot keys when pressed while the Fn key is held down.

Hotkey	Function	Description
Fn+F1	Sleep Mode	Enter Suspend Mode
Fn+F2	Silent Mode Toggle	Enable/Disable Silent mode (Power Management)
Fn+F3	Mute Toggle	Mute On/Off
Fn+F4	Display Toggle	Changes Display Mode: LCD-only, CRT/HDMI-only and simultaneous LCD&CRT/HDMI
Fn+F5	Volume Down	Decrease the speaker volume
Fn+F6	Volume Up	Increase the speaker volume
Fn+F7	Brightness Down	Decrease the brightness level
Fn+F8	Brightness Up	Increase the brightness level
Fn+F9	Touchpad Toggle	Enable/Disable Touchpad
Fn+F10	WLAN+BT Toggle	RF (WLAN+BT) on/off
Fn+F11	Webcam Toggle	Enable/Disable the CCD camera

4 Super POSH Introduction

Super POSH is an integrated AP which has great benefit for system. It includes "Super Power", "Super OSD", "Super Speed" and "Super HDD".





- **Super Power:**



Super Power provides an integrated page for user to control power management. It could increase battery life and effective of you.

A.Mode:

There would be 4 Mode for selection. Description as below:

Mode	Icon	Description
Power saving		Decrease system performance to provide more battery time.
Normal		Balance system performance.
Highperformance		Provide system best performance.
Dynamic switch		Switch "Power saving" & "Normal mode" automatically when battery mode, and auto switch "High performance" mode when plug-in.

* Super Power always keeps status.

B.Information:

Super Power display some power information of system.

Items	Description
Battery LifeTime	Show battery discharge time.
CPU Loading	Show CPU loading.





Battery Percentage

Show the percentage of battery.
There will also be a status bar:

Color	Status
red	0~10
orange	11~30
Blue	31~100

Power Status

Show Current Power Status from AC or Battery icons.

-  Battery mode
-  Plug-in and Charging
-  Plug-in and Full
-  AC only



Warning:

If the percentage of battery was under 10%, there will pop a warning window on task icon.



• **Super OSD (on screen display) :**

Super OSD provide several styles and locations selection of OSD and also could get the current status of OSD from status bar.



Super OSD function as follow: The function depends on the definition.

Function	Preview		
Bluetooth			
Silent mode			
Mute(only speaker)			
Volume			
Brightness			
Touchpad			
Wireless			
Webcam			
Caps Lock			
Num Lock			

- **Super Speed :**

Super Speed optimizes and cleans system to obtain the best effective and defragment.



A. Optimizing Windows® Setting :

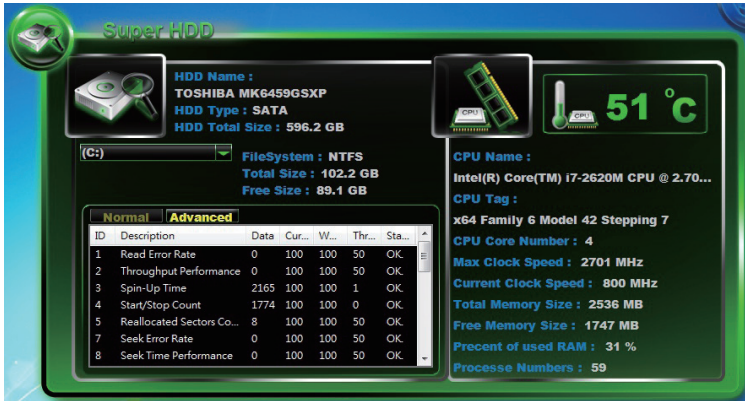
Click "Optimize" button after selecting the optimizing options to improve system performance. Click "Restore" button to restore system to original status. After "Optimize" or "Restore" your system, please reboot the computer for the changes to take effect.

The options description as below:

Options	Description
Visual Effect	Modify visual effect setting to increase the performance of system.
Service	Terminate uncommon programs running in the background when Windows® is running.
Boot	Speed up the time of booting process.
Shutdown	Speed up the time of shutdown process.
Network	Modify network setting to improve the performance of network.
System	Modify system setting to increase the performance of system.

• **Super HDD :**

Super HDD displays the health status of HDD and information of CPU & RAM.



Information of main HDD: Name, Type, Partitions and Total Size.



Use scroll bar to choose the partition, it will display File system, Total Size and Free Size of every partitions.

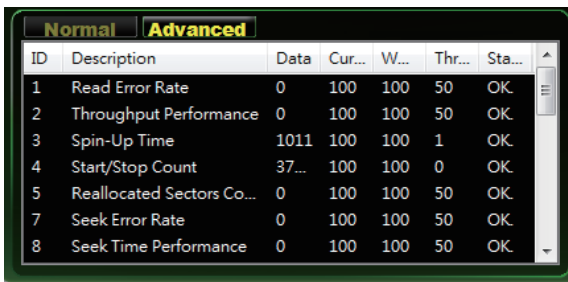
Hard Disk Menu:

Normal: Show the HDD Health Index according to S.M.A.R.T result of the items in detail page.

HDD	Health Index	Condition
	Healthy	HDD status will be healthy if all status of normal.
	Warning	HDD status is warning if there was over one items.
	Danger	HDD status is danger if there were over one danger items.
	Not Support	HDD was not support this function.

• **Advanced :**

There were 46 attributes from S.M.A.R.T to determine the HDD health Index.



5 System Setup

Pressing the hot keys to adjust BIOS setup, system recovery and boot option menu.

Hotkey	Function	Description
F2	BIOS setup	Enter BIOS setup
F9	system recovery	Enter system recovery
F12	boot option	Enter boot option menu

6 Recovery Guide

System Recovery (Restore your laptop operating system)

When something is going wrong with the laptop operating system, the storage of the laptop has a hidden partition containing a full back up image of the operating system that can be used to restore the system to factory default settings.



Note

- If the storage has been switched or the partition deleted, the recovery option will no longer be available and a recovery service will be needed.
- The recovery function is only available on devices with O/S preinstalled. Devices with DOS do not have the recovery function.

Launch System Recovery

The system recovery feature is preinstalled before the laptop is shipped from the factory. The option menu allows you to launch the Windows recovery tool to reinstall the operating system to factory default.

The brief introduction below will show you how to start the recovery tool and restore your system.



All ready to go

Make sure your PC is plugged in. This will take a few minutes.

Windows 7 Recovery Guide

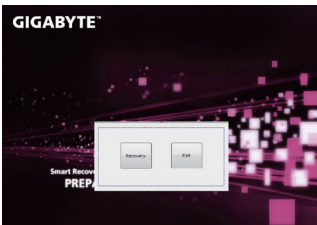
1 Turn off and restart the laptop.

2



During the laptop turn on process, press and hold F9 key to launch the tool.

3



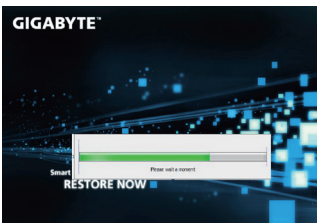
The recovery will be activated and you will see the option buttons on the window. Click on "Recovery" to start it.



Caution

Once the "Recovery" is selected, your personal data and files will be deleted after the laptop starts restoring, and the operating system will be reset to factory default settings.

4



A progress indicator bar will show on the window when the recovery process is running. Please make sure the AC-adaptor is plugged in and do not turn off the laptop.

5



Reboot the laptop after the system recovery is complete.

Windows 8 Recovery Guide

1

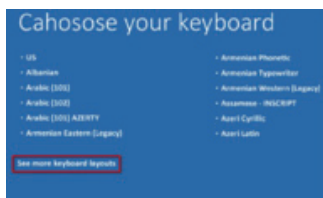
Turn off and restart the laptop.

2



During the laptop turn on process, press and hold F9 key to launch the tool.

3



Choose your keyboard layout.

You can press "See more keyboard layouts" to see next page of languages.

4



Choose "Troubleshoot" to enter the recovery settings.

(Also you can choose "Continue" to exit recovery system and continue to Windows 8 for files or data backup.)



There are two options for system recovery

- **Refresh your PC**

You can refresh your laptop to improve the system stability without losing your files.

- **Reset your PC**

If you want to remove all of your files, you can reset your PC completely.

Caution: All personal data and files will be lost.

5



■ Choose “Refresh your PC”

[Click on “Next”] > [Choose a target operating system.] > [Click on “Windows 8”.] > [Click on “Refresh” to execute recovery function.]



Here are what will happen

- Your files and personalization settings won't be changed.
- Your PC settings will be restored to factory default settings.
- Apps from Windows Store will be kept.
- Apps you installed from discs or websites will be removed.
- A list of removed apps will be saved on your desktop.



■ Choose “Reset your PC”

[Click on “Next”] > [Choose a target operating system.] > [Click on “Windows 8”.] > [Choose an option to recover your system]

▶ Just remove my files

Only personal data and files will be removed, but computer settings will be kept.

▶ Fully clean the drive

The drive will be completely restored to factory default settings. It takes more time. > [Click on “Reset” to execute recovery function.]



Here are what will happen

- All of your personal files and apps will be removed.
- Your PC settings will be restored to factory default settings.

Remark



Advanced options



System Restore

Use a restore point recorded on your PC to restore Windows.



System Image Recovery

Recover Windows using a specific system image file.



Automatic Repair

Fix problems that keep Windows from loading.



Command Prompt

Use the Command Prompt for advanced troubleshooting.



UEFI Firmware Settings

Change settings in your PC's UEFI firmware.

■ **Warranty & Service:**

For Warranty, Service and related information, please refer to the warranty card or GIGABYTE service website as the following link:

<http://www.gigabyte.com/support-downloads/technical-support.aspx>

■ **FAQ:**

For FAQ (Frequent Asked Questions), please refer to the following link:

<http://www.gigabyte.com/support-downloads/faq.aspx>

