

GIGABYTE™

P25

USER'S MANUAL

使 用 手 冊

● English

V2.1



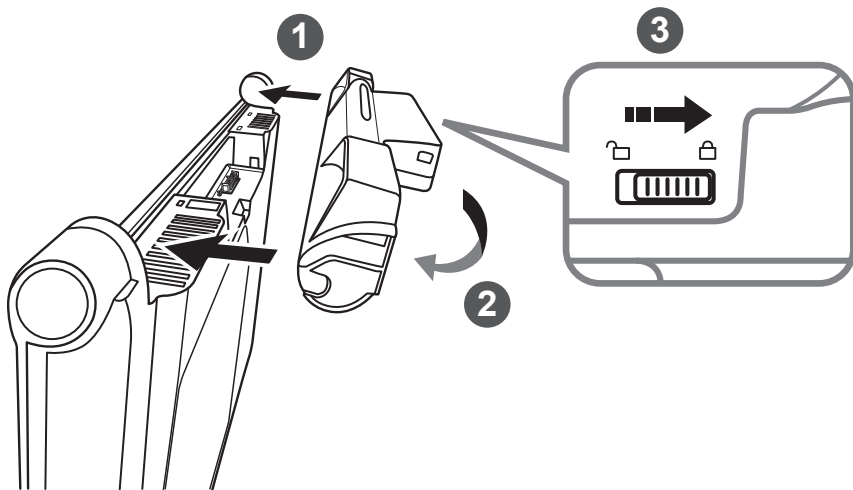
\* Images Used for Reference Only



## Congratulations on your purchase of the GIGABYTE Notebook!

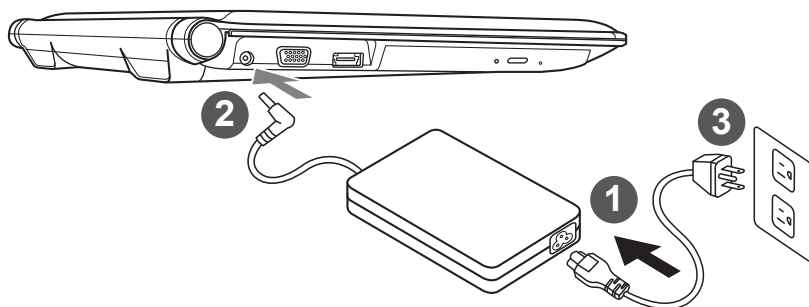
This Manual will help you to get started with setting up your notebook. For more detailed information, please visit our website at <http://www.gigabyte.com>. All specifications are subject to the manufacturer's configuration at the time of shipping and may change without prior notice, written or otherwise.

## Using GIGABYTE Notebook for the First Time

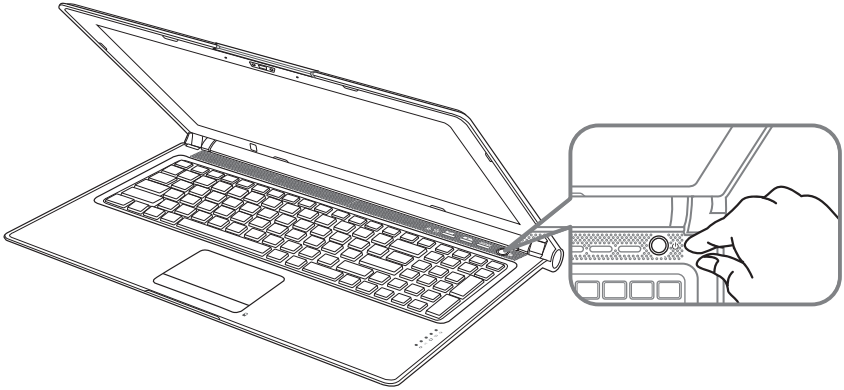


### To install the battery please follow these steps:

- 1 Target the battery's direction into the tenon-mortise.
- 2 Circulate the battery downwards until hearing the "snap" sound to lock the battery.
- 3 Remember to slide the switch to the "Lock" position.



- 1 Connect the power cord to the AC adapter.
- 2 Connect the AC adapter to the DC-in jack on the left side of the notebook.
- 3 Connect the power cord to the power outlet.



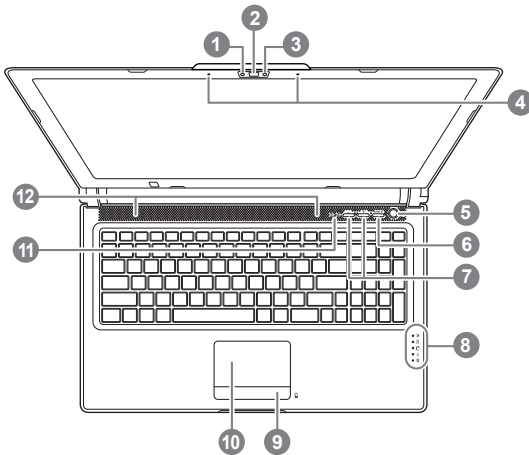
### **Switching on the Power :**

After you turn on the Notebook for the very first time, do not turn it off until the operating system has been configured. Please note that the volume for the audio will not function until Windows® Setup has completed.

### **Booting Up the Notebook for the First Time :**

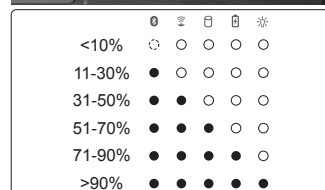
Depending on your configuration, the Microsoft® Windows® Boot Screen will be the first screen that you will see as the notebook starts up. Follow the on-screen prompts and instructions and enter your personal information to complete the setup of the Windows® Operating System.

## Top & Front View

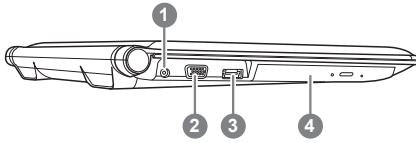


- 1 Webcam Status LED indicator
- 2 Webcam
- 3 Light sensor
- 4 Microphone x 2
- 5 Power Button
- 6 Smart+ Button ①
- 7 Volume Setting
- 8 LED Indicators ②
- 9 Battery Indicator Button ③
- 10 TouchPad
- 11 Num Lock & Caps Lock Indicator
- 12 Stereo speakers

- ① To call out smart manager function.
  - Smart Setup:  
Under off condition, Push "Smart+" to enter "Smart Setup" menu in off mode. You can choose BIOS Setup Utility, Smart Recovery in the setup menu.
  - Smart Manager:  
In Windows® Mode Press "Smart+" button to initiate "Smart Manager".
- ②
  - ☀ Power Status LED
  - 🔋 Battery Status LED
  - 💿 HDD Status LED
  - 📶 Wireless Lan Status LED
  - 📶 Bluetooth Status LED
- ③ Press the right button of touchpad to check the remaining battery power. Right-click to show the remaining power percentage. As shown below, the battery life indicator is available when the laptop is shut down, in stand-by or hibernation. (Battery mode)

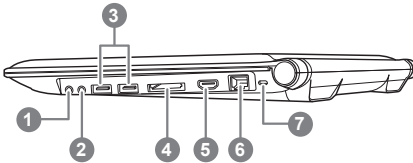


### Left View



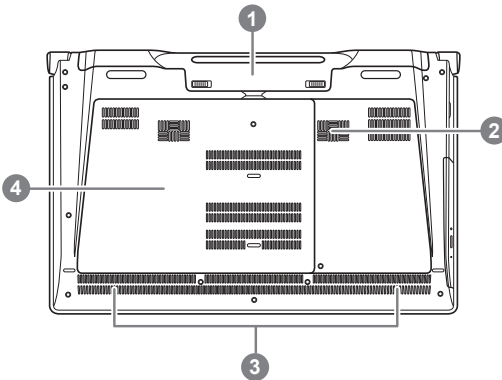
- 1 DC-in Jack
- 2 External Display (VGA) Port
- 3 eSATA/USB Combo
- 4 Optical Disc Drive

### Right View



- 1 Microphone Jack
- 2 Headphone Jack
- 3 USB Port x 2
- 4 Secure Digital Card Reader
- 5 HDMI Port
- 6 Ethernet Port
- 7 Kensington Lock Slot
















### Rear & Bottom View



- 1 Battery Bay
- 2 Woofer Speaker
- 3 Stereo Speakers
- 4 Hard Disk Bay/Memory Bay

## Hotkeys

The computer employs hotkeys or key combinations to access most of the computer's controls like screen brightness and volume output. To activate hotkeys, press and hold the <Fn> key before pressing the other key in the hotkey combination.

| Hotkey  | Function                  | Description   |
|---|---------------------------|---|
| Fn+F1<br>      | Sleep                     | Put the computer in Sleep mode.   |
| Fn+F2<br>      | Wireless LAN              | Enables/disable the Wireless LAN function.  |
| Fn+F3<br>      | Brightness Down           | Decrease the screen brightness.   |
| Fn+F4<br>      | Brightness Up             | Increase the screen brightness.   |
| Fn+F5<br>      | Display Toggle            | Switch display output between the display screen, external monitor (if connected) and both. |
| Fn+F6<br>      | Touchpad Toggle           | Turn the internal touchpad on and off.  |
| Fn+F7<br>      | Speaker Toggle            | Turn the speaker on and off.  |
| Fn+F8<br>      | Volume Down               | Decrease the sound volume.  |
| Fn+F9<br>      | Volume Up                 | Increase the sound volume.  |
| Fn+F10<br>    | N/A                       | There is no function for this model.  |
| Fn+F11<br>   | Bluetooth                 | Enable/disable the Bluetooth function.  |
| Fn+F12<br>   | Webcam                    | Turn the internal webcam on and off.  |
| Fn+▲▼◀▶<br>  | Playback                  | Media Playback control.   |
| Fn+~  | Screen Toggle             | Turn the screen on and off.   |
| Fn+Esc<br>   | ODD Tray Quit             | To quit the ODD tray instantly.   |
| Fn+Space<br> | Keyboard Backlight Toggle | Turn the keyboard backlight on and off.   |

⑤ This function is limited to the keyboard which has backlight.

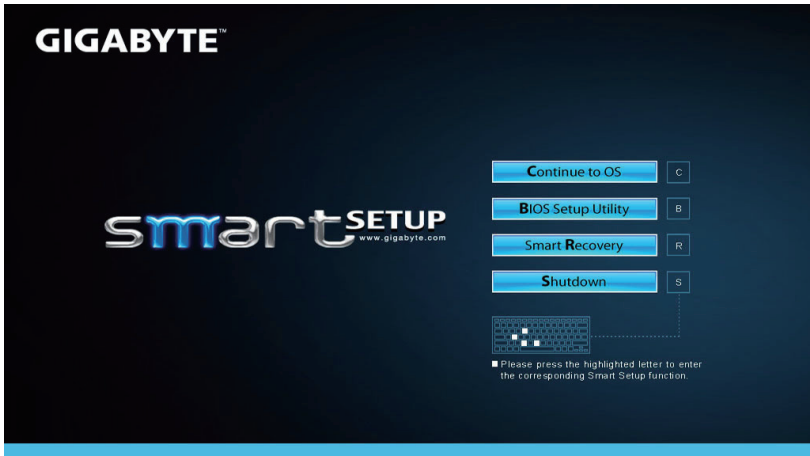
# GIGABYTE Software Application

## ■ GIGABYTE Smart Manager

You can activate GIGABYTE Smart Manager by double clicking on the shortcut icon on the desktop if the machine you purchased has the operation system built-in. GIGABYTE Smart Manager is an icon-based control interface, enabling users to intuitively access common system setup as well as GIGABYTE exclusive utilities. Please be noted that the GIGABYTE Smart Manager interface, icons, utilities and software versions may vary based on the purchased models. Please operate GIGABYTE Smart Manager according to the actual version built-in.

## ■ GIGABYTE Smart Setup

During the off mode, press Smart<sup>®</sup> Button to enter "Smart Setup" menu. You can choose BIOS Setup Utility, Smart Recovery, and other functions in this setup menu.



Press "Continue to OS" button to enter operating system.



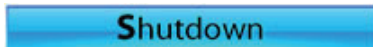
Press "BIOS Setup Utility" button to enter BIOS setup utility.



Press "Smart Recovery" button to enter GIGABYTE Smart Recovery.



Press "Shutdown" button to shutdown the system.

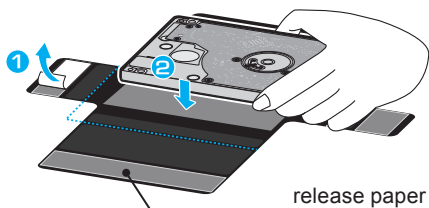


# Installing the HDD on P25

## ⚠ CAUTION

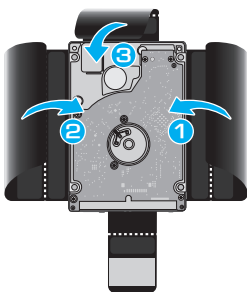
- Supplied Items: Buffer Bracket\*1
- Please remove the power cord and battery first, and Follow the Step 1~4 for installing the HDD.

1



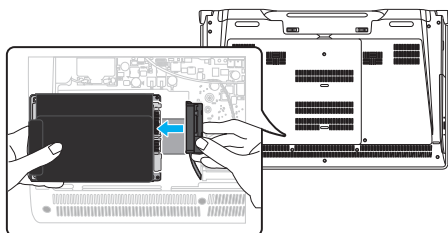
- Take off the labeled release paper and place the HDD within the dotted lines marked in blue.

2



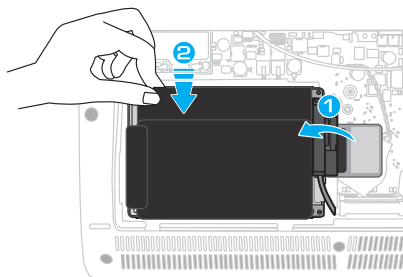
- Fold the Mylar as shown in the picture and ensure that the Mylar covers the HDD from all sides.

3



- Open the back cover of the laptop and connect the SATA Bus with HDD/SSD.

4



- Once connected – stick label over the Connector to ensure the HDD/SSD does not slip out of the package.
- Place the HDD/SSD into the slot until securely placed.
- Put the back cover on and fasten the screws. Your laptop is now ready with the latest additional storage.

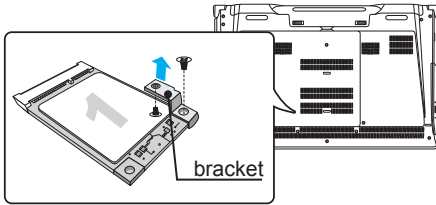


# Installing a 2nd mSATA SSD on P25

## ⚠ CAUTION

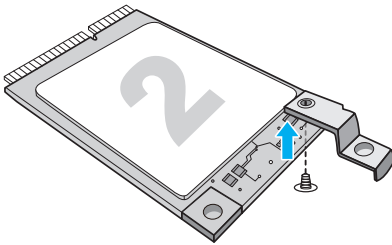
- Please remove the power cord and battery first, and Follow the Step 1~3 for installing the SSD.

### 1



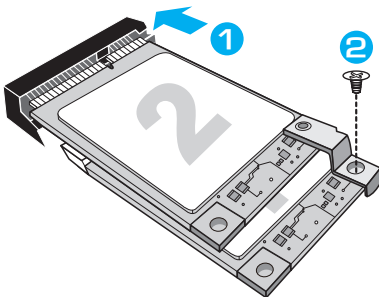
- Open the back cover or get the accessory kit bag in the box, you can find one mSATA SSD bracket and two screws inside.
- Unfasten the screw and bracket from the mSATA SSD. Leave the mSATA SSD in its slot.

### 2



- Fasten the mSATA bracket onto the 2nd mSATA SSD as shown.

### 3



- Insert 2nd mSATA SSD with bracket.
- Push the mSATAs lightly until the bracket falls in place and aligns with the Motherboard. Fasten both mSATA SSDs onto the motherboard with the screw.

## ⚠ CAUTION

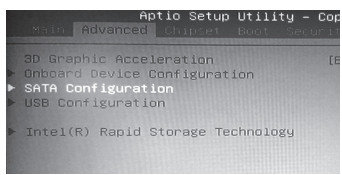
- GIGABYTE will take no responsibility for any customer induced damages during installing. We suggest that you send your notebook to an authorized GIGABYTE service center if any question. Making any charges depends on local conditions. Website: <http://www.gigabyte.com/index.aspx>

# Setup Your System for RAID 0/1

## WARNING

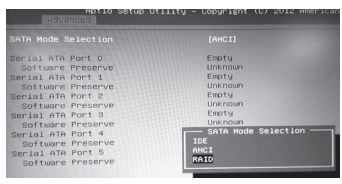
- Please backup your data before you build and run RAID 0/1 on your system.
- RAID 1 needs two storage drives of the same specification and capacity in your laptop.
- RAID 0 needs two storage drives of the same specification in your laptop. Different capacity is acceptable.

1



- Press F2 when computer starts to Enter BIOS setup utility.
- Go to Advanced > SATA configuration.

2



- Change "SATA Mode selection" from "AHCI" to "RAID".
- Press F10 to save and exit. The system will restart automatically.

3



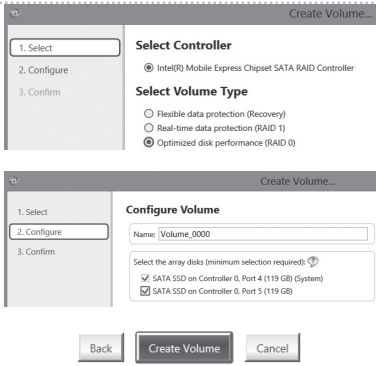
- Once the system restarts. Go to "All Apps" found at the bottom of the screen on Windows 8 and execute Intel Rapid Storage program.

4



- You will see the Intel Rapid Storage Technology Screen, Click> Create.

5



- Under Select Volume Type choose Optimized disc performance (RAID 0/1), Click > NEXT.
- Under Configure Volume you may set Name to your preferred name and select both controllers.
- Click > Next. You will see Confirm Volume Creation. Click > Create volume.
- Wait until the system migration is complete and restart the laptop.

# Smart USB Backup Guide (Original: Recovery Image USB)

## ⚠ WARNING

- You can backup original recovery image through this application in case of losing by device damage.
- You can backup original recovery image to USB disk and restore the system if any storage system replacement with the recovery USB disk.
- Before you restore the system through the recovery USB disk, please make sure that you have already made the backup of your data.
- Please DO NOT shut down or un-plug the system when performing backup through recovery USB disk.

1



- Please plug in the USB disk which is at least 20GB in capacity to make the original image (backup the data in USB first. All data will be eliminated during the creation of recovery USB disk)

2



- Insert the driver disk to your optical drive and run the install of "Smart USB Backup" (for none-ODD model, please use USB ODD device or download from <http://www.gigabyte.com>)

3



- Run the "Smart USB Backup" after finishing the install.

4



- Select your USB disk from the drop-down list and start to create the recovery USB disk.

5

- The window will pop out when the creation of recovery disk is done.
- Please press F12 on starting the system when you need to restore the system. Select "boot from recovery USB disk" and the system will be restored.
- The time needed for restore will be around 30 mins(time needed may vary by USB disk model) .

# Recovery Guide

## System Recovery (Restore your laptop operating system)

When something is going wrong with the laptop operating system, the storage of the laptop has a hidden partition containing a full back up image of the operating system that can be used to restore the system to factory default settings.



### Note

- If the storage has been switched or the partition deleted, the recovery option will no longer be available and a recovery service will be needed.
- The recovery function is only available on devices with O/S preinstalled. Devices with DOS do not have the recovery function.

## Launch System Recovery

The system recovery feature is preinstalled before the laptop is shipped from the factory. The option menu allows you to launch the Windows recovery tool to reinstall the operating system to factory default.

The brief introduction below will show you how to start the recovery tool and restore your system.



### All ready to go

Make sure your PC is plugged in. This will take a few minutes.

## Windows 7 Recovery Guide

1

Turn off and restart the laptop.

2



During the laptop turn on process, press and hold F9 key to launch the tool.

3



The recovery will be activated and you will see the option buttons on the window. Click on "Recovery" to start it.



### Caution

Once the "Recovery" is selected, your personal data and files will be deleted after the laptop starts restoring, and the operating system will be reset to factory default settings.

4



A progress indicator bar will show on the window when the recovery process is running. Please make sure the AC-adapter is plugged in and do not turn off the laptop.

5



Reboot the laptop after the system recovery is complete.

## Windows 8 Recovery Guide

1

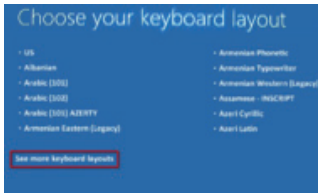
Turn off and restart the laptop.

2



During the laptop turn on process, press and hold F9 key to launch the tool.

3



Choose your keyboard layout. You can press "See more keyboard layouts" to see next page of languages.

4



Choose "Troubleshoot" to enter the recovery settings. (Also you can choose "Continue" to exit recovery system and continue to Windows 8 for files or data backup.)



### There are two options for system recovery

- **Refresh your PC**

You can refresh your laptop to improve the system stability without losing your files.

- **Reset your PC**

If you want to remove all of your files, you can reset your PC completely.

**Caution: All personal data and files will be lost.**

5



### ■ Choose “Refresh your PC”

[Click on “Next”] > [Choose a target operating system.] > [Click on “Windows 8”.] > [Click on “Refresh” to execute recovery function.]



#### Here are what will happen

- Your files and personalization settings won't be changed.
- Your PC settings will be restored to factory default settings.
- Apps from Windows Store will be kept.
- Apps you installed from discs or websites will be removed.
- A list of removed apps will be saved on your desktop.



### ■ Choose “Reset your PC”

[Click on “Next”] > [Choose a target operating system.] > [Click on “Windows 8”.] > [Choose an option to recover your system]

#### ► Just remove my files

Only personal data and files will be removed, but computer settings will be kept.

#### ► Fully clean the drive

The drive will be completely restored to factory default settings. It takes more time. > [Click on “Reset” to execute recovery function.]



#### Here are what will happen

- All of your personal files and apps will be removed.
- Your PC settings will be restored to factory default settings.



### ■ Advanced options



#### System Restore

Use a restore point recorded on your PC to restore Windows.



#### System Image Recovery

Recover Windows using a specific system image file.



#### Automatic Repair

Fix problems that keep Windows from loading.



#### Command Prompt

Use the Command Prompt for advanced troubleshooting.



#### UEFI Firmware Settings

Change settings in your PC's UEFI firmware.

## Windows 8.1 Recovery Guide

**1** Turn off and restart the laptop.

**2**



During the laptop turn on process, press and hold F9 key to launch the tool.

**3**



Choose “Troubleshoot” to enter the recovery settings. (Also you can choose “Continue” to exit recovery system and continue to Windows 8.1 for files or data backup.)



### There are two options for system recovery

- **Refresh your PC**

You can refresh your laptop to improve the system stability without losing your files.

- **Reset your PC**

If you want to remove all of your files, you can reset your PC completely.

**Caution: All personal data and files will be lost.**

**4**



- **Choose “Refresh your PC”**

Choose an account to continue.



### Here are what will happen

- Your files and personalization settings won't be changed.
- Your PC settings will be restored to factory default settings.
- Apps from Windows Store will be kept.
- Apps you installed from discs or websites will be removed.
- A list of removed apps will be saved on your desktop.



- **Choose “Reset your PC”**

- ▶ **Just remove my files**

Only personal data and files will be removed, but computer settings will be kept.

- ▶ **Fully clean the drive**

The drive will be completely restored to factory default settings. It takes more time. > [Click on “Reset” to execute recovery function.]



### Here are what will happen

- All of your personal files and apps will be removed.
- Your PC settings will be restored to factory default settings.



## ■ Advanced options



### System Restore

Use a restore point recorded on your PC to restore Windows.



### System Image Recovery

Recover Windows using a specific system image file.



### Automatic Repair

Fix problems that keep Windows from loading.



### Command Prompt

Use the Command Prompt for advanced troubleshooting.



### UEFI Firmware Settings

Change settings in your PC's UEFI firmware.



### Startup Settings

Change Windows Startup behavior.



## Appendix

### ■ Warranty & Service :

Warranty and service and related information please refer to the warranty card or GIGABYTE service website as the below link:

<http://www.gigabyte.com/support-downloads/technical-support.aspx>

### ■ FAQ :

FAQ (Frequent Asked Questions) please refer to the below link:

<http://www.gigabyte.com/support-downloads/faq.aspx>