

Welcome!

歡迎使用W511系列筆記型電腦

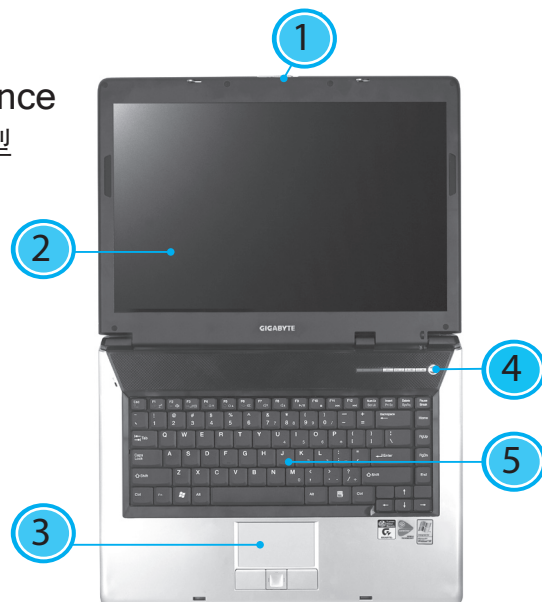
This Quick Start Guide offers information to guide you through a successful Notebook Setup.

感謝您選擇W511系列筆記型電腦。為協助您順利使用W511系列筆記型電腦，我們特地設計這份「快速安裝說明」來協助您開始設定您的W511系列筆記型電腦。

Step 1 Features at a Glance

第一步 瀏覽W511系列筆記型電腦功能

1. Latch
栓鎖
2. LCD Display
LCD顯示螢幕
3. TouchPad
觸控板
4. Power Button
電源鍵
5. Keyboard
鍵盤



Step 3 W511 Series Notebook Computer Device Drivers

第三步 W511系列筆記型電腦功能

If W511 Series Notebook Computer already have an operating system installed into your notebook computer, it is best to install the needed device drivers for using the built-in devices of your notebook computer. Before installing the drivers, check with your dealer first if they have already installed all the drivers along with the operating system. If not, follow the procedures below.

如果 W511 系列筆記型電腦已經安裝了作業系統，您最好安裝必要的裝置驅動程式，以使用筆記型電腦的內建裝置。在安裝這些驅動程式之前，請先與您的經銷商確認這些驅動程式是否已與作業系統一起預先安裝。如果沒有，請依照以下程序：

1. Press the Eject button on the front of the drive.
按下光碟機退片鍵。
2. Hold the CD by its center hole and outer edge. Place the CD, label side up, into the round tray area. Press the CD down onto the center spindle.
將光碟片取出(位於右側袋內)，從光碟片中間的洞和邊緣拿穩，將光碟片置入光碟機中(標示朝上)，再將光碟輕輕壓入中央樞軸來固定光碟片。
3. Push the tray back into the drive. It will get you through the Auto Run installation.
將光碟片盤機推回。自動執行 (Auto Run) 會帶領您完成安裝。

Get to Know Power Cinema

Power Cinema is an integrated player for Audio CDs, music clips, photos, DVD/VCD movies, and video clips. Power Cinema offers fast launch sequence, easy-to-use interface, user settings, and five different entertainment modes. Keyboard and mouse controls support the easy browsing of folders and files, setting preferences, and playing files and disc. For more details, please consult the user manual.

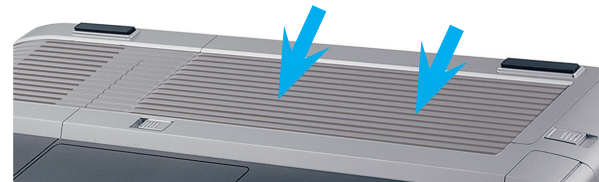
認識您的 Power Cinema

Power Cinema 是一套方便又容易使用的應用程式，它將多媒體功能都整合在一起，使您能方便的播放音樂光碟、音樂片段、照片、DVD/VCD 電影和影片。Power Cinema 提供快速啟動程序、簡便的使用介面、各種使用者設定值和多種不同的娛樂模式。可使用鍵盤和滑鼠控制來簡易瀏覽資料夾和檔案、更可以設定喜好和播放檔案與光碟片的功能。如果您需要更詳盡的介紹和使用說明，您可以參閱「使用手冊」。

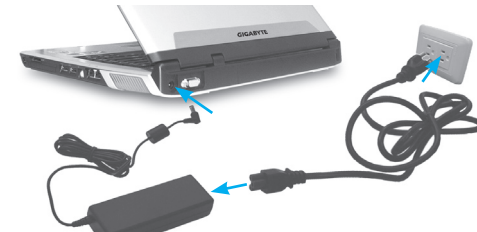
Step 2 Setup

第二步 開始使用

1. Slides in Battery/電池組安裝到電腦之中



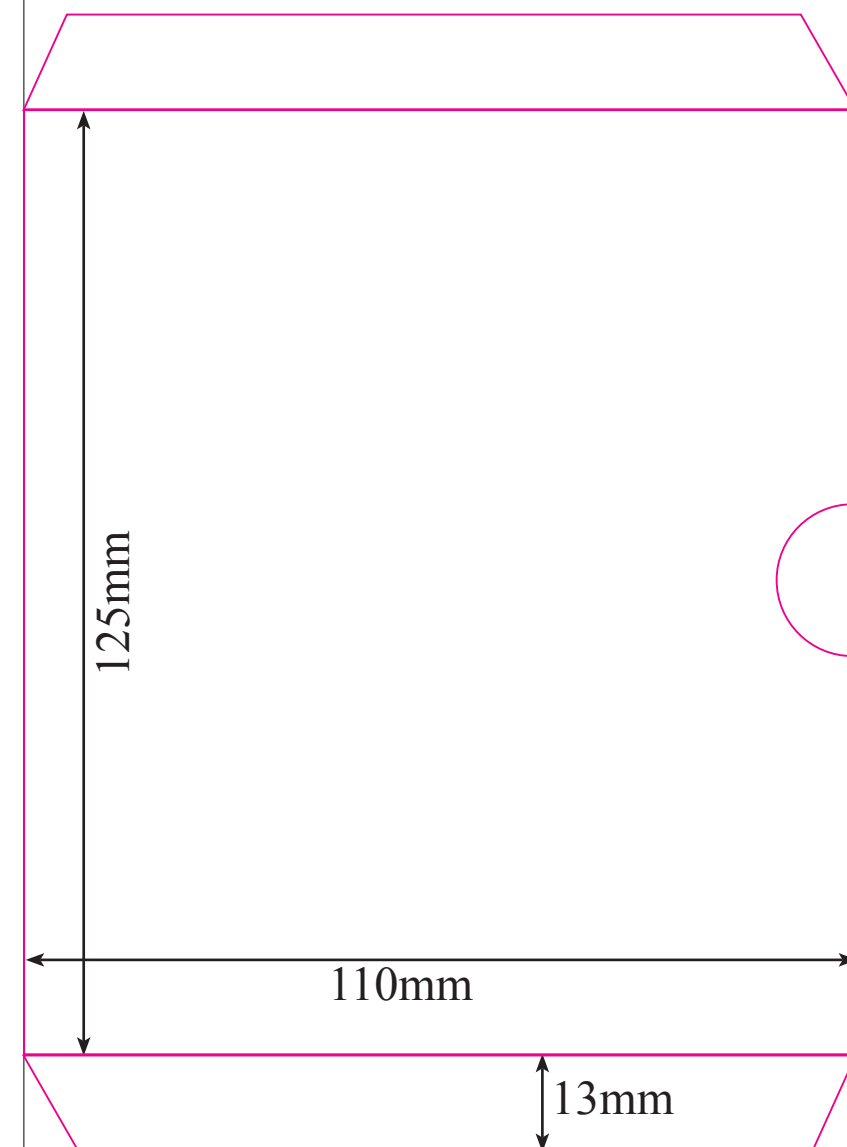
2. Connecting to the AC Power Source/連接 AC 電源



3. Starting Notebook Computer/ 開啟您的筆記型電腦



Press the Power/Resume button.
按下電源鍵

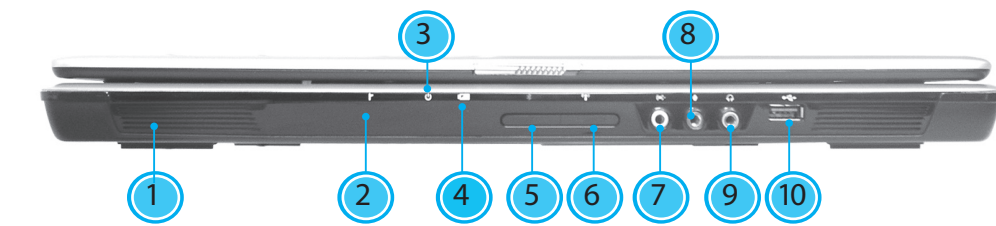


The picture above is the main menu of Power Cinema. Under this menu you can click a content button by using touchpad, mouse, or arrow keys on the keyboard to open the corresponding feature's home page. If the buttons shows one of several choices, such as sort order, the current setting is shown by a brightly coloured ball on the left side.

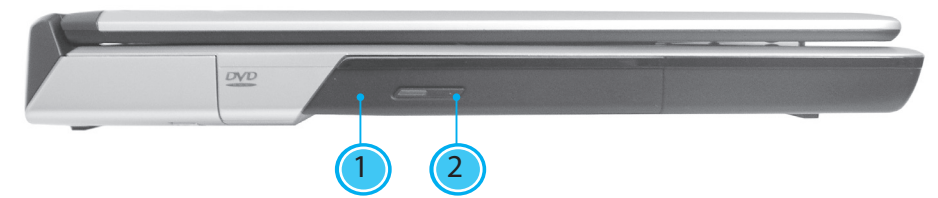
上圖是Power Cinema的主選單。您可使用觸控板、滑鼠或鍵盤上的方向鍵點選選單中的內容按鍵，開啟對應功能的首頁。如果按鍵顯示出一個以上的選擇，例如分類次序，則目前的設定值會以一較亮顏色的球顯示在左邊。

KNOW YOUR W511 SERIES NOTEBOOK COMPUTER

認識您的W511系列筆記型電腦



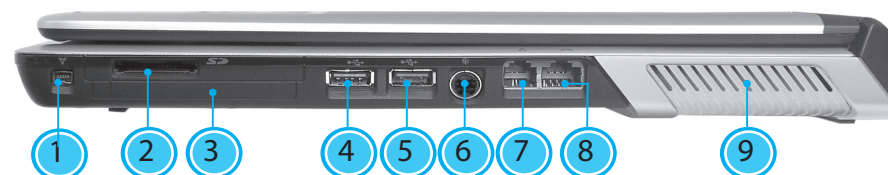
- | | | |
|-------------------------------|------------------------------------|---|
| 1. Speakers
揚聲器 | 5. Bluetooth (option)
藍芽通訊 (選配) | 8. Mic-in Jack
麥克風插孔 |
| 2. CIR Port
紅外線裝置 | 6. Wireless Communication
無線通訊 | 9. Speaker/ Head-phone Jack
揚聲器/耳機插孔 |
| 3. Power Indicator
電源指示燈 | 7. Line-in Jack
麥克風線路輸入插孔 | 10. USB Ports
USB埠 |
| 4. Battery Indicator
電池指示燈 | | |



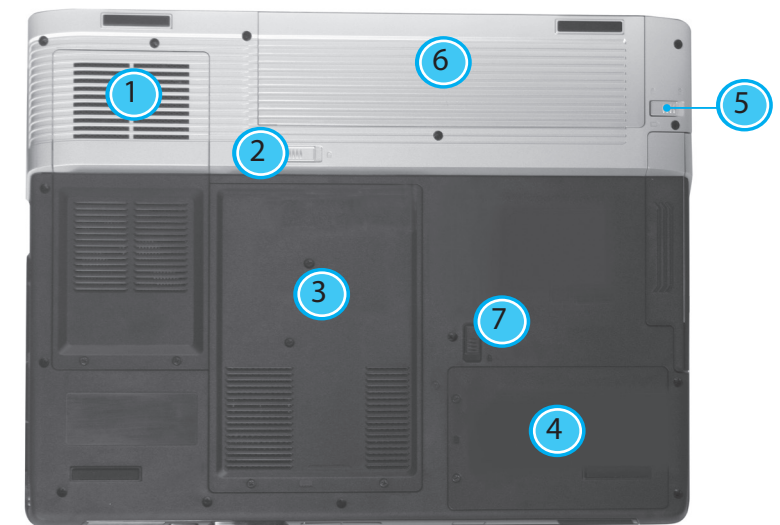
- | | |
|------------------------------|---|
| 1. Optical Disc Drive
光碟機 | 2. Optical Drive Eject Button
光碟機退片鍵 |
|------------------------------|---|



- | | |
|------------------------------------|--|
| 1. Power Port
電源輸入插孔 | 3. Port Replicator Connector
擴充底座插槽 |
| 2. External Display Port
外部顯示器埠 | 4. Security Cable Slot
電腦安全鎖 |



- | | |
|----------------------------------|-----------------------------|
| 1. IEEE 1394 Port
IEEE 1394 埠 | 6. S-Video Port
S-Video埠 |
| 2. 4-in-1 Cards Slot
4合一讀卡機 | 7. LAN Port
LAN埠 |
| 3. PC Card Slot
PC卡槽 | 8. Modem Port
數據機埠 |
| 4. USB Port
USB埠 | 9. Vent
通風孔 |
| 5. USB Port
USB埠 | |



- | | |
|---------------------------------|------------------------------------|
| 1. Cooling Fan
冷卻風扇 | 5. Battery Release Latch
電池組釋放鈕 |
| 2. Battery Lock Latch
電池組鎖 | 6. Battery Bay
電池組槽 |
| 3. Memory Compartment
記憶體槽 | 7. ODD Latch
光碟機釋放鈕 |
| 4. Hard Disk Compartment
硬碟槽 | |

W511 series Utility Driver CD

GIGABYTE™
TECHNOLOGY

W511 series Notebook

Quick Installation Guide v1.0

快速安裝說明

- English
- 中文

This Quick Start Guide is intended for use only as a quick reference. For more detailed information and procedures, please consult the user manual included in your package or visit us at <http://tw.giga-byte.com>

「快速安裝說明」是協助您的簡易快速參考指南。如果您需要更多關於電腦功能和資訊請仔細查閱您「使用手冊」。另外，您也可以利用我們的官方網站 <http://tw.giga-byte.com> 查詢您須要的資料。

26A080-45110-M40

297mm

420mm



Upgrade Your Life™
www.gigabyte.com.tw