

Copyright ©2005  
All Right Reserved – Printed in China

N211U Notebook User's Manual

Original Issue: 2005/09

This manual guides you in setting up and using your new Notebook PC. Information in the manual has been carefully checked for accuracy and is subject to change without notice.

No part of this manual may be reproduced, stored in a retrieval system, or transmitted, in any form or by any means, electronic, mechanical, photocopy, recording, or otherwise, without prior written consent.

#### Trademarks

Product names used herein are for identification purposes only and may be the trademarks of their respective companies.

Microsoft®, MS-DOS, Windows®, and Windows® Sound System are trademarks of Microsoft Corporation.

Intel®, Centrino™, Pentium® M, Banias, Calexico are registered trademarks of Intel Corporation.

Sound Blaster, Sound Blaster Pro are trademarks of Creative Technology.

All other brands or product names mentioned in this manual are trademarks or registered trademarks of their respective companies.

## Safety Instructions

Use the following safety guidelines to help protect yourself and your notebook.

### When Using Your N211U Notebook Computer



**CAUTION:** Do not operate your portable computer for an extended period of time with the base resting directly on your body. With extended operation, heat can potentially build up in the base.

Allowing sustained contact with the skin could cause discomfort or, eventually, a burn.

- Do not attempt to service the notebook yourself. Always follow installation instructions closely.
- Do not carry a battery in your pocket, purse, or other container where metal objects (such as car keys) could short-circuit the battery terminals. The resulting excessive current flow can cause extremely high temperatures and may result in damage from burns.
- Be sure that nothing rests on your AC adapter's power cable and that the cable is not located where it can be tripped over or stepped on.
- Place the AC adapter in a ventilated area, such as a desktop or on the floor, when you use it to run the computer or to charge the battery. Do not cover the AC adapter with papers or other items that will reduce cooling; also, do not use the AC adapter while it is inside a carrying case.
- Do not push objects into air vents or openings of your notebook computer. Doing so can cause fire or electric shock by shorting out

interior components.

- Use only the AC adapter and batteries that are approved for use with your notebook. Use of another type of battery or AC adapter may risk fire or explosion.
- Danger of explosion if battery is incorrectly replaced.
- Replace only with the same or equivalent type battery recommended by the manufacturer.
- Dispose of used batteries according to the manufacturer's instructions.
- Before you connect your notebook to a power source, ensure that the voltage rating of the AC adapter matches that of the available power source.
  - 115 V/60 Hz in most of North and South America and some Far Eastern countries such as South Korea and Taiwan.
  - 100 V/50 Hz in eastern Japan and 100 V/60Hz in western Japan.
  - 230 V/50 Hz in most of Europe, the Middle East, and the Far East.
- If you use an extension cable with your AC adapter, ensure that the total ampere rating of the products plugged in to the extension cable does not exceed the ampere rating of the extension cable.
- To remove power from your notebook, turn it off, disconnect the AC adapter from the electrical outlet, and remove the battery.
- To help avoid the potential hazard of electric shock, do not connect or disconnect any cables or perform maintenance or reconfiguration of this product during an electrical storm.
- Do not dispose of batteries in a fire. They may explode. Check with local authorities for disposal instructions.
- When setting up your notebook for work, place it on a level surface.

- When traveling, do not check your notebook as baggage. You can put your notebook through an X-ray security machine, but never put your notebook through a metal detector. If you have your notebook checked by hand, be sure to have a charged battery available in case you are asked to turn on your notebook.
- When traveling with the hard drive removed from your notebook, wrap the drive in a non-conducting material, such as cloth or paper. If you have the drive checked by hand, be ready to install the drive in your notebook. You can put the hard drive through an X-ray security machine, but never put the drive through a metal detector.
- When traveling, do not place your notebook in overhead storage compartments where it could slide around. Do not drop your notebook or subject it to other mechanical shocks.
- Protect your notebook, battery, and hard drive from environmental hazards such as dirt, dust, food, liquids, temperature extremes, and overexposure to sunlight.
- When you move your notebook between environments with very different temperature and/or humidity ranges, condensation may form on or within your notebook. To avoid damaging your notebook, allow sufficient time for the moisture to evaporate before using your notebook.

*NOTICE: When taking your notebook from low-temperature conditions into a warmer environment or from high-temperature conditions into a cooler environment, allow your notebook to acclimate to room temperature before turning on power.*

- When you disconnect a cable, pull on its connector or on its strain relief loop, not on the cable itself. As you pull out the connector, keep it evenly aligned to avoid bending any connector pins. Also,

before you connect a cable make sure both connectors are correctly oriented and aligned.

- Before you clean your notebook, turn it off, unplug it from its power source, and remove the battery.
- Handle components with care. Hold a component such as a memory module by its edges, not its pins.



**CAUTION:** When using your telephone equipment, basic safety precautions should always be followed to reduce the risk of fire, electric shock and injury to persons, including the following:


- Do not use this product near water, for example, near a bathtub, washing bowl, kitchen sink or laundry tub, in a wet basement or near a swimming pool.
- Avoid using a telephone (other than a cordless type) during an electrical storm. There may be a remote risk of electric shock from lightning.
- Do not use the telephone to report a gas leak in the vicinity of the leak.
- Use only the power cord indicated in this manual.

**WARNING: Possible voiding of Warranty**

- \* If the battery is not properly handled, there may be a risk of explosion; make sure you are using the same or equivalent battery.
- \* Please dispose of the used battery according to the instructions given by the manufacturer.
- \* Please be aware that cracked, deeply scratched or other poor quality disk used in this drive may cause damage to the drive and data in the disk. Such discs may break at high-speed rotation. If full care is not exercised in relation to this matter you may void the warranty to this product.

## Regulatory Notices

### CE Notice (European Union)

Marking by the symbol  indicates compliance of this N211U computer to the EMC Directive and the Low Voltage Directive of the European Union. Such marking indicates that this N601 system meets the following technical standards:

- EN 55022 — “Limits and Methods of Measurement of Radio Interference Characteristics of Information Technology Equipment.”
- EN 55024 — “Information technology equipment - Immunity characteristics - Limits and methods of measurement.”
- EN 61000-3-2 — “Electromagnetic compatibility (EMC) - Part 3: Limits - Section 2: Limits for harmonic current emissions (Equipment input current up to and including 16 A per phase).”
- EN 61000-3-3 — “Electromagnetic compatibility (EMC) - Part 3: Limits - Section 3: Limitation of voltage fluctuations and flicker in low-voltage supply systems for equipment with rated current up to and including 16 A.”
- EN 60950 — “Safety of Information Technology Equipment.”



NOTE: EN 55022 emissions requirements provide for two classifications:

- Class A is for typical commercial areas.
- Class B is for typical domestic areas.

### BSMI Notice (Taiwan Only)

Most notebook computer computer products are classified by the Bureau of Standards, Meteorology and Inspection (BSMI) as Class

B information technology equipment (ITE).



R33006

This symbol that must be marked on the product indicates the product complies with BSMI standard.

### CCC Notice (China Only)

On Class A systems, the following warning will appear near the regulatory label:

Warning: This is a Class A product. In a domestic environment this product may cause radio interference, in which case the user may be required to take adequate measures.

#### 声明

此为 A 级产品，在生活环境中，该产品可能会造成无线电干扰。在这种情况下，可能需要用户对其干扰采取切实可行的措施。



## Preface

Congratulations on your purchase of a Notebook computer! Your new notebook features the most innovative advances in portable computing technology. It combines state-of-the-art ergonomics with sophisticated architecture to provide you with a personal computer that is compact, powerful, and easy to use. Designed for a wide range of general, business, and personal productivity applications, this notebook is an ideal choice for use in the office, at home, and on the road.

This Manual contains all the information you need to set up and use your new notebook. It describes all the features of the notebook in an easy-to-read yet thorough manner.

---

# Content

Safety Instructions .....	I
Regulatory Notices .....	III
Preface .....	IV

## Chapter 1 The Grand Tour

1.1 The Outside of N211U Notebook Computer .....	02
1.2 Status LED Indicator .....	05

## Chapter 2 Operating Basics

2.1 Using the Battery Pack .....	07
2.2 Connecting the AC Power Source .....	08
2.3 Turning Your Notebook On and Off .....	08
2.4 Installing N211U Notebook Computer Device Drivers .....	09
2.5 Using the Launch Keys .....	09
2.6 Using the Keyboard .....	10
2.7 Using the TouchPad .....	11
2.8 Storage .....	12

## Chapter 3 Personalize Your N211U Notebook Computer

3.1 How to restore to the Factory Restore Point .....	14
3.2 BIOS Setup .....	16
3.3 How to Upgrade the BIOS .....	19
3.4 Graphic System .....	21
3.5 Protecting Your N211U Notebook Computer .....	22

## Chapter 4 Connecting to Peripherals

4.1 Using USB Port .....	24
4.2 Connecting to an External Monitor .....	24

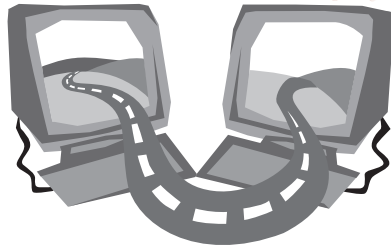
4.3 Using the Modem Port .....	25
4.4 Using the LAN Port .....	25
4.5 IEEE 1394 Port .....	26
4.6 PC Card Slot .....	26

## Chapter 5 Troubleshooting

5.1 Frequently Asked Questions .....	28
--------------------------------------	----

Appendix A System Information .....	30
-------------------------------------	----

Appendix B Service Center .....	33
---------------------------------	----



## Chapter 1 The Grand Tour

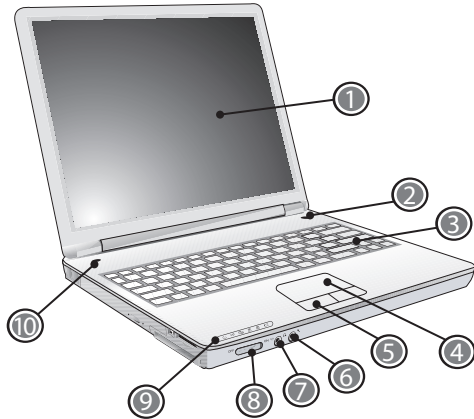
This chapter will show you the basic components of the computer and briefly explain how they function.

The Grand Tour 

**ENGLISH**

## 1.1 The Outside of N211U Notebook Computer

### ► Front View ◀

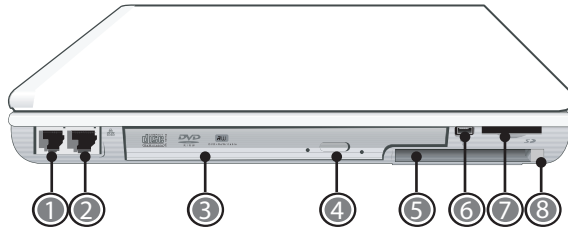


- 1 LCD Display screen  
Also called Liquid-Crystal Display(LCD), displaying computer output.
- 2 Power Button  
Turn the computer on and off, or resumes whenever it is in suspend mode.
- 3 Keyboard  
Inputs data into your computer.

- 4 Touchpad  
Use it to move the pointer, select and activate items on the screen.
- 5 Touchpad buttons  
Function like the left and right buttons on a external mouse.
- 6 Microphone-in jack  
Connects to an external microphone.
- 7 Speaker/ Headphone Jack  
Connects to stereo headphone, speakers, or earphone set.
- 8 Wireless LAN Switch  
Turns the Wireless Communication function on or off.
- 9 Status LED Indicator  
Light-Emitting Diodes (LEDs) shows the status of the computer's functions and components.
- 10 Launch Keys  
Buttons for launching frequently used programs.

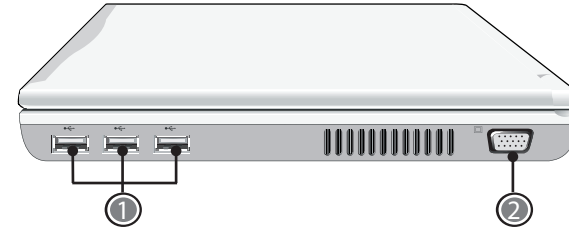


## ▶ Left View ◀



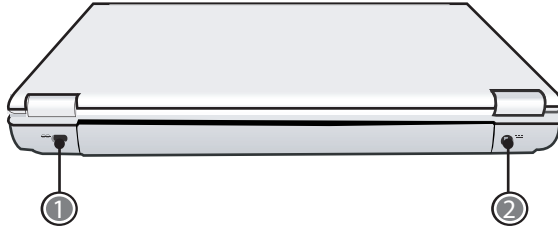
- 1 Modem Port  
Connects to a phone line.
- 2 LAN Port  
Connects to LAN module connects your computer to other computer/networks through a local area network (LAN).
- 3 Optical Disc Drive  
Internal optical drive, load programs from a compact disc (CD) or digital video disc (DVD).
- 4 Optical Drive Eject Button  
Eject the optical drive tray from the drive.
- 5 PC Card Slot  
Accepts one Type II 16-bit PC card or 32-bit CardBus PC card.
- 6 IEEE 1394 Port  
Connects to IEEE 1394 devices.
- 7 4-in-1 Cards Slot  
Accepts SD/MMC/MS/MS Pro modules. (Only one card can operate at any given time.)
- 8 PC Card Eject Button  
Eject the PC Card from the slot.

## ▶ Right View ◀



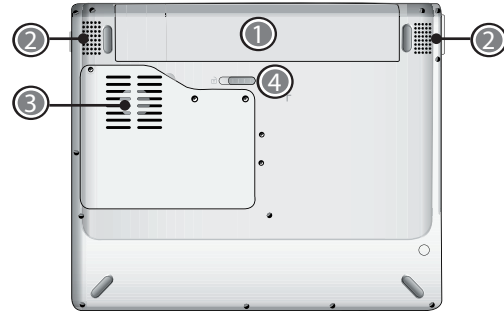
- 1 USB Ports  
Connects to USB devices (e.g., USB mouse, USB camera).
- 2 VGA External Video Display Port  
Connects to an external monitor.

► Back View ◀



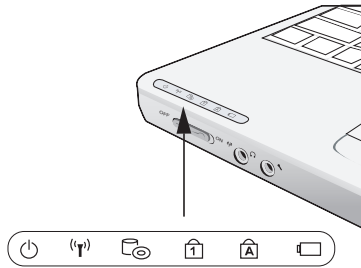
- 1 Kensington Lock Slot  
Connects a Kensington compatible security lock.
- 2 Power Port  
Connects to an AC adapter.

► Bottom View ◀



- 1 Battery Bay  
Equipped with a choice of Lithium-Ion (Li-Ion) battery pack.
- 2 Speakers  
Left and right speakers delivers stereo audio output.
- 3 Fan Vent  
It provides air flow to cool the internal components.  
*CAUTION: Do not block the fan vent. A pin or similar object can damage the computer's security.*
- 4 Battery Release Latch  
Push latch to remove the battery pack.

## 1.2 Status LED Indicator



### Power

It glows blue when the computer is on; It flahs blue when the computer is in the suspend mode.

The light is off when the computer is in the Hibernation mode or shut down.

### Wireless LAN

It glows blue when the Wireless LAN function is in use.

It is off when the Wireless LAN function is turned off.

### CD ROM Drive

Lights up when the computer is reading information from the DVD-ROM or the Combo drive.

### Num LK

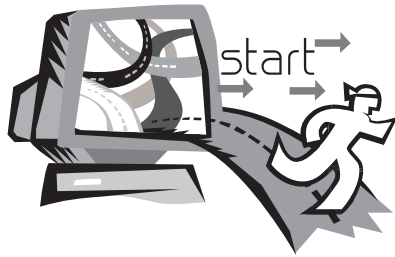
Lights up when the numeric mode is turned on by pressing [Num LK]. You can use the embedded numeric keyboard for numeric data input. Press [Num LK] again to turn off the embedded numeric keyboard.

### Caps Lock

Lights up when the alphabet keys are locked in uppercase. The words you input in this mode are all capital letters. Press [Caps Lock] to turn on or turn off this mode.

### Battery Status Indicator

Battery status indicator tells you whether the battery is charging or is already charged. If you are charging your battery, light remains on even if your notebook is shut off. If there's no battery activity, the power adapters are not connected, or the power switch is off, the battery indicator will also be off.



## Chapter 2 Operating Basics

This chapter provides information on basic operation including connecting the AC adaptor, turning the computer on/off, using touch-pad, keyboard, hot keys, battery, and so on. If you are new to computers and to the operating system, this chapter can guide you through the basic and try new exciting features.

## 2.1 Using the Battery Pack

N211U notebook computer is designed to operate with one of the following power sources:

- AC power  
(using the AC adapter connected to an electrical outlet)
- Lithium-Ion (Li-Ion) battery pack

You should use the AC adapter whenever it is possible, relying on the battery pack only when AC power is unavailable. The rechargeable Li-Ion battery pack allows you to operate notebook computer without an external power source. When you use the AC adapter to connect your Notebook to a power outlet, the internal battery will automatically begin to recharge. While the battery is charging, the Battery Charge icon on the Indicator panel will be active. When the battery is fully charged, the Battery Charge icon will turn off. If your computer is turned off or standby mode, a fully discharged battery will take about 3 hours to recharge.

- Operating a fax modem, video, or audio equipment increases the computer's power requirements.
- Decreasing monitor brightness can also save power.

The battery is not fully charged. Allow your battery to fully charge before using it (i.e., before disconnecting AC power). Calibrating the battery before use is also highly recommended.

- Li-Ion Battery is vulnerable, do not charge it with other power adapter, or it may cause fire or explosion.

### ► Replacing the Battery ◀

Over time, the battery's capacity gradually decreases. We recommend that you replace your battery when you notice that it begins to store significantly less charge.

To replace the battery, please follow the steps as below:

1. Turn off the computer.
2. Close the screen cover and turn the computer over.
3. Slide the side battery latch (1) to the left. Continue to hold it until the battery is removed.
4. Make sure the replacement battery is properly oriented. Insert the battery into the battery compartment.

### ► Maintenance of the AC Adapter ◀

- Do not connect the adapter to any other device.
- Do not step on the power cord or place heavy objects on top of it. Carefully route the power cord and any cables away from all potential traffic.
- When unplugging the power cord, do not pull on the cord itself but pull on the plug.
- The total ampere rating of the equipment plugged in should not exceed the ampere rating of the cord if you are using an extension cord. The total rating of all equipment plugged into a single wall outlet should not exceed the fuse rating.
- Make sure the voltage of the power source before connecting your notebook computer to the power outlet. If you are uncertain of your power specifications, consult local dealer or Electricity Company.



## 2.2 Connecting the AC Adapter

The AC adaptor converts AC power to DC power and reduces the voltage supplied to the computer. It can automatically adjust to any voltage from 100 to 240 volts and the power output in 18.5 volts, 3.5A, enabling you to use the computer in almost any region.

*CAUTION: Use only the AC adaptor and cord we recommended. Use of wrong adaptor could damage your computer. We assume no liability for any damage in such case.*

To connect the adaptor properly, please follow the steps as below:



1. Connect the power cord to the AC adapter.
2. Connect the AC adapter to the DC power port on the rear of your computer.
3. Connect the AC adapter power cord to an AC outlet.

## 2.3 Turning Your Notebook On and Off

### ► Turning on the power ◀

Open the display panel, press and hold the power button for one or two seconds. The power indicator glows blue after the computer is turned on.

### ► Turning off the power ◀

If you are not going to use N211U notebook computer for a while, it is best to turn off the power of the notebook computer for longer use. Before turning off the power, you need to close all application programs and then shutdown the operating system.

After turning off your N211U notebook computer, make it a habit to leave the LCD panel open for a while whenever used for an extended period of time. This allows the inside parts of your notebook computer to cool off. Closing the panel will force the heat up against the LCD screen, which may degrade the LCD when done regularly. More importantly, never close the LCD panel for a long period of time when computer is on while power-saving features are disabled.

### ► Suspepm mode ◀

Adjust the default power management settings in the Power Options/ Advanced dialog box. The Power Options Properties dialog box allows you to set different actions to take when the computer is left idle for a certain amount of time.

## 2.4 Installing N211U Notebook Computer Device Drivers

If N211U Notebook Computer already have an operating system installed into your notebook computer, it is best to install the needed device drivers for using the built-in devices of your notebook computer.

Before installing the drivers, check with your dealer first if they have already installed all the drivers along with the operating system. If not, follow the procedures below:

1. You can find one bundled Driver CD shown as follow.



2. Put the CD into the CD-RW or DVD-RW (optional) Drive. It will get you through the Auto Run installation.

## 2.5 Using the Launch Keys

Launch Key is located at the upper-left corner. It enables you to access Windows Media Player program. Refer to the Front View With the Display Open in Chapter 1 for details.

## 2.6 Using the Keyboard



### ► Basic keypad ◀

It produces letters, numbers, punctuation marks, and special symbols that appear on the screen.

### ► Fn keys ◀

By pressing Fn key in combination with other keys, some of the enhanced keyboard functions could be simulated, and nearly all the functions of desktop keyboard can be executed on the computer.

---

[Fn]+[F3] Toggles display on/off

---

[Fn]+[F4] Suspend to RAM/HDD

---

[Fn]+[F5] Toggles between LCD/CRT displays

---

[Fn]+[F6] Decreases LCD brightness

---

[Fn]+[F7] Increases LCD brightness

---

[Fn]+[F8] Decreases Volume

---



---

[Fn]+[F9] Increases Volume

---

[Fn]+[F10] Mute Volume

---

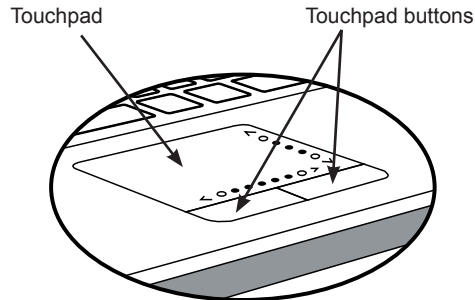
### ► Numeric mode ◀

The embedded numeric keypad consists of ten keys that make number intensive input more convenient. Press <NumLock> to enable or disable the numeric keypad.



## 2.7 Using the Touchpad

The touchpad is a pressure sensitive pointing device that provides all the features of a two-button mouse. Its primary function is to move the cursor around the screen.



*The Touchpad is a pressure-sensitive device. If not properly cared for, it can be easily damaged. Please take note of the following precautions.*

- *Make sure the touchpad does not come into contact with dirt, liquids or grease.*
- *Do not touch the touchpad if your fingers are dirty.*
- *Do not rest heavy objects on the touchpad or the touchpad buttons.*

### ► Click ◀

You can move the pointer over the item with your finger on the pad and tap the left button below once to select menu items, or just click the touchpad once.

### ► Double Click ◀

Move the pointer over the item with your finger on the pad and tap the left button twice to select menu items, or just click the touchpad twice.

### ► Drag and drop ◀

Move the pointer over the item and tap your finger on the pad, then drag with a tap following by a continuous pointing motion (a click-and-a-half).

### ► Scrolling buttons ◀

If you are scrolling through a document, you may find that using the scrolling line is more restful to your hand than holding down a mouse button. The scrolling line is located on the touchpad.

*Adjust the touchpad settings by selecting Settings/Control Panel/Printers and Other Hardware/Mouse/Buttons. These settings allow you to change the orientation of the touchpad from right-handed to left-handed, and fine tune the pointer movement and timing of clicks.*

## 2.8 Storage

### ► Hard Disk ◀

N211U notebook computer is equipped with a built-in large capacity 2.5 inch IDE hard disk drive where you store or install your computer operating system and all application software programs. The internal hard disk is normally assigned as Drive C after formatting.

- If you wish to replace your hard disk, contact your local dealer for more information about this dealer-installable device.
- You can increase the system's storage capacity by replacing the standard hard disk drive with a drive of greater storage capacity.
- Always turn off your notebook computer first before removing the hard disk drive. Failure to do so will damage the computer and the hard disk. Avoid jarring or moving your computer while the hard disk is still being accessed.

### ► Optical Disc Drive ◀

N211U notebook computer with an optical drive which may be one of the following:

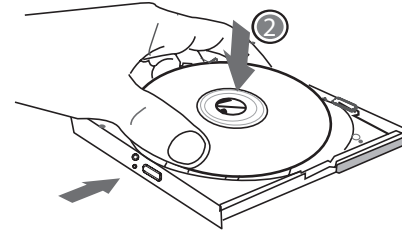
DVD combo / DVD Dual / DVD-Super Multi

You would normally use the drive for installing operating system and software application programs. To insert and remove a disc on the drive:

1. Press the button on the front of the drive to open the disc tray and pull the tray open.
2. Place the disc on the tray, label side up.
3. Place the disc on the central spindle and press gently until the

disc clicks into place.

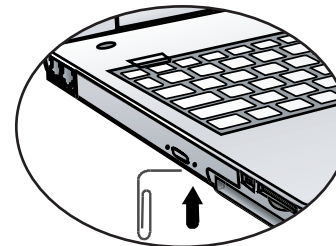
4. Slide the tray back until it clicks shut.



*Warning: When the computer is reading from the optical drive, the indicator light for the DVD-ROM will flash on. Do not attempt to remove the disc while the indicator light is active.*

*Warning: Do not insert any foreign objects into the disc tray. Do not force the tray to open or close manually. When not in use, keep the tray closed to prevent dust or dirt from entering the drive unit.*

*If you experience difficulty when removing a CD disc, stretch a paper clip (or use a pin or a thin metal rod) and insert it into the emergency eject hole located on the bezel: The CD disc tray should eject immediately. This procedure can also be used to remove a CD from the drive when the notebook is powered off.*





## Chapter 3 Personalize Your N211U Notebook Computer

This chapter explains how to use the BIOS setup utility. N211U Notebook Computer has a BIOS setup utility which allows you to configure important system settings, including settings for various optional functions of the computer. You will also learn how to upgrade components for better performance. If you are not sure of any settings, contact your dealer.



### 3.1 How to restore to the Factory Restore Point

1. Power on your computer. If it is already running, reboot (restart/reset) it.
2. As soon as anything (logo, graphic, text) appears on the screen after boot-up, press and hold down the F9 key. (Typically, F9 is the “hot key” that starts Recover Pro. Contact your PC manufacturer if this hot key does not work.)



The cME Console screen displays. This is the access screen for applications in the cME.

Your Phoenix cME Console opening screen may not match the one pictured here. The number of available applications varies.

• *Normally, your mouse will be functional when running FirstWare Recover Pro, and you can click to select options. If the mouse is not functioning, press the Tab key until the desired option is highlighted, and then press Enter to select it.*

#### ► How to Run the cME Version of Recover Pro ◀

Once you have accessed the cME version of Recover Pro, follow

these instructions.

1. On the selection screen, select **Factory Restore**. The Select Recover Type screen displays.
2. Select a recovery option.
  - Click the desired option, or
  - Press the Tab key until the desired option is highlighted; press the space bar.

**Recover Boot Partition**—Select this option if you know that your hard drive is divided into partitions and you want to recover only the boot partition of the hard drive. The Recover Boot Partition option may not be available to all users.

**Recover Full Drive**—Select this option if your drive is not partitioned and/or you want to recover the entire drive. The entire primary drive (usually C:) will be recovered.

**Cancel and Exit**—Select this option if you do not want to run FirstWare Recover Pro at this time.

- If you are unsure which option to choose and want to minimize the number of deleted files, first select Recover Boot Partition.
- If, after selecting the first option, the recovery process does not successfully restore your operating system, run FirstWare Recover Pro again, and select the second option, Recover Full Drive.
- It is recommended that you not choose Recover Boot Partition if the drive does not already contain a partition.

After you select an option, a confirmation dialog (identical or similar to the one shown here) displays.

3. Confirm that you want to continue. Click **Yes** to begin the recovery process. Or—if not using the mouse—press **Tab** to select and then press **the space bar**. (Selecting **No** returns you to the previous screen, from which you can exit FirstWare Recover Pro.)

The recovery starts, and the FirstWare Progress screen displays. No further selections are required.

*When you run FirstWare Recover Pro, the system is returned to the basic factory configuration. If you recover the entire hard drive (not just a boot partition), all data (files) you have created and stored on your system's hard drive and all applications that you have installed on the system will be lost.*

#### ► Monitoring the Recovery Process ◀

As the FirstWare Recover Pro Progress screen displays and updates, you can monitor the recovery progress.

The screen indicates several types of information during recovery:

- Percentage of recovery completed
- Time elapsed



- Estimated time remaining

The time it takes FirstWare Recover Pro to complete the recovery varies from approximately 5 or 10 minutes to more than one hour, depending on the size of the recovery image and system performance. The more applications and utilities that were included in the factory setup, the longer the process will take.

- Number of KB of data to be recovered

**Cancel**—If you select **Cancel**, the recovery process will stop, but the system will be unbootable. It is recommended that you select **Cancel** only to delay the process until a later time.

#### ► Successful Recovery ◀

When the recovery process is successfully completed, the following actions occur automatically:

- The FirstWare Recover Progress screen indicates the process is complete, and the screen disappears.
- The computer reboots.
- The operating system starts up, and your desktop displays.

*Operating system start-up is the indication that the recovery process was successful.*

The operating system should now be working, and factory-installed applications should be available and functional. Your personal data files, however, will no longer be available.

The Recover Pro Factory Restore image remains in the protected area of your system in case you need to run it again in the future.

### 3.2 BIOS Setting

The BIOS setup Utility allows you to configure your computer's basic settings. When you turn your computer on, the system reads this information to initialize the hardware so that it can operate correctly. Use the BIOS setup utility to change your computer's start-up configuration. For example, you can change the security and power management routines of your system.

You can only enter the BIOS setup utility as the computer is booting, that is between the time you turn on the computer and before the Windows interface appears. If your computer is already on, shut down your computer completely (power off) and restart it and then press the Del key to enter the setup utility.

#### ► Navigating and Entering Information in BIOS ◀

Use the following keys to move between fields and to enter information:

Item	Description
←→	Select Screen
↑↓	Push the up and down arrow keys to move among selections, then press Enter to make a selection.
+ -	Change Option
<b>Tab</b>	Select Field
<b>F1</b>	General Help
<b>F10</b>	Save and Exit
<b>ESC</b>	Press <b>Esc</b> to exit any section. If you wish to exit the BIOS utility without saving changes, go to the main menu, then press <b>Esc</b> .

Users are allowed to enter new values to replace the default settings in certain fields, and the rest fields are specified by system default parameters and cannot be modified by users. Reverse the attribute of the main options and press the Enter key to enter into the submenu. Press the Esc key to return to the previous configuration page.

#### ► The Main Menu ◀

##### BIOS SETUP UTILITY

Main	Advanced	Boot	Security	Exit
<b>System Overview</b>		Use [ENTER] , [TAB] Or [SHIFT-TAB] to select a field.		
<b>AMIBIOS</b> Version : R0.XX Build Date: 01/01/04		Use [+] or [-] to Configure system Time		
<b>Processor</b> Type :Intel® Pentium® M processor 1100MHz Speed :1100MHz				
<b>System Memory</b> Size : 504MB		←→ Select Screen		
<b>System Time</b> [19:14:50]		↑↓ Select Item		
<b>System Date</b> [Thu 01/01/2004]		+- Change Option		
		Tab Select Field		
		F1 General Help		
		F10 Save and Exit		
		ESC Exit		
V02.53 ©Copyright 1985-2002, American Megatrends , Inc.				

► Advanced Menu ◀

BIOS SETUP UTILITY

Main	<b>Advanced</b>	Boot	Security	Exit
<b>Advanced Setting</b>		Select the amount of system memory used by the internal graphics device.		
Graphics Mode Select	[Enabled, 8MB]	← Select Screen ↑↓ Select Item +- Change Option F1 General Help F10 Save and Exit ESC Exit		
Auto DIM function	[Enable]			
Legacy USB Support	[Enable]			
Battery Learning	[Enter]			
Start FAN Learning	[Enter]			
V02.53 ©Copyright 1985-2002, American Megatrends , Inc.				

► Boot menu ◀

BIOS SETUP UTILITY

Main	Advanced	<b>Boot</b>	Security	Exit
<b>1st Boot Device</b> [CDROM: SM-QSI DVD-R]		Specifies the boot sequence from the available devices.  A device enclosed in Parenthesis has been disabled in the corresponding type menu.  ← Select Screen ↑↓ Select Item +- Change Option F1 General Help F10 Save and Exit ESC Exit		
<b>2nd Boot Device</b> [HDD:FM-FUJITSU MHT2040AT]				
<b>3rd Boot Device</b> [Network:Realtek Boot]				
V02.53 ©Copyright 1985-2002, American Megatrends , Inc.				

Personalize Your N211U  
Notebook Computer

ENGLISH

► Security menu ◀

BIOS SETUP UTILITY				
Main	Advanced	Boot	<b>Security</b>	Exit
<b>Security Settings</b>			Install or Change the password.	
Supervisor Password : Not Installed				
User Password : Not Installed				
<b>Change Supervisor Password</b>				
Change User Password				
			← Select Screen ↑↓ Select Item Enter Change F1 General Help F10 Save and Exit ESC Exit	
V02.53 ©Copyright 1985-2002, American Megatrends , Inc.				

► Exit menu ◀

BIOS SETUP UTILITY				
Main	Advanced	Boot	Security	<b>Exit</b>
<b>Exit Options</b>			Exit system setup after saving the changes.	
<b>Save Changes and Exit</b>			F10 key can be used for this operation.	
Discard changes and Exit				
Discard Changes				
Load Optimal Defaults				
Load Failsafe Defaults				
			← Select Screen ↑↓ Select Item Enter Go To Sub Screen F1 General Help F10 Save and Exit ESC Exit	
V02.53 ©Copyright 1985-2002, American Megatrends , Inc.				

**Change User Password**

With a User password, you can enter the Setup Utility and change or remove the User password, but you cannot enter the Setup Utility and change or remove the Supervisor password, nor enable diskette access if it has been disabled.

**Change Supervisor Password**

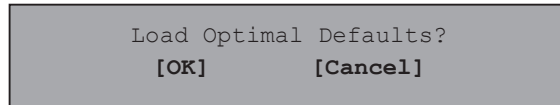
A supervisor password must be set before a lower-level user password can be set. After selecting Change Supervisor Password,



press Enter. You will be prompted for the new password, and then again to verify it. Type in 6 or fewer keystrokes. If you make an error, press Esc to start over.

### Resetting the CMOS to Default Settings

The main page provides the system parameters for you to reset the CMOS to default settings. After you enter this page, select the Load Optimal Defaults:



Select [OK] to reset the CMOS to default settings.

### Exiting and Saving

#### • Save Settings and Exit

Select this option to save changes to the field values, and restart the computer using the new values. (Pressing F10 from any of the menu screens also allows you to save settings and exit.)

#### • Exit Without Saving

Select this option to discard any changes you have made to the field values, and restart the computer using the old values.

## 3.3 BIOS Update

N211U notebook computer uses EPROM Flash BIOS chip that allows you to easily upgrade the BIOS program.

When you update the BIOS, any customized settings you made are lost. Please go to Gigabyte website at <http://www.gigabyte.com.tw> for the latest BIOS upgrade utility.

To upgrade the BIOS on DOS:

1. Insert the disk with BIOS updated into the diskette drive. (USB FDD, USB Flash Disc, or Floppy Disc)
2. Power on the system with the diskette in the diskette drive.
3. On the DOS prompt, type the following command.

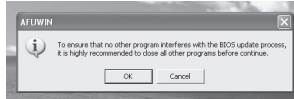
```
A:\> Phlash016 XXXXXX.ROM (BIOS filename) /allb
/c or
A:\>XXXXXX.BAT (Batch file for BIOS file)
```

4. The system is now automatically running the BIOS upgrade.
5. The system will shut down automatically when the upgrade is completed.

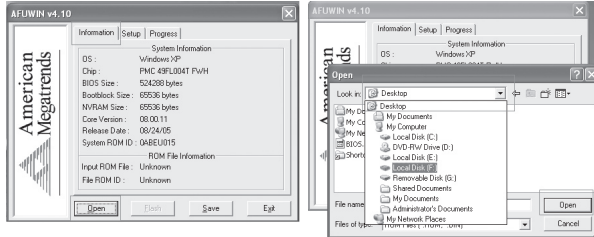
To upgrade the BIOS on Windows:

1. Please go to Gigabyte website at <http://www.gigabyte.com.tw> (Home > Support > Notebook > BIOS > BIOS of N211U) to download ❶ BIOS upgrade tool (AMI WinPhlash) and ❷ the latest BIOS upgrade utility.
2. Unzip the file you have downloaded.

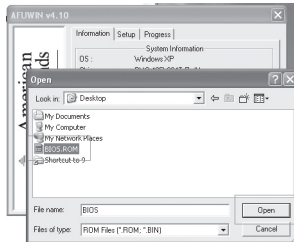
- Run the AFUWIN.exe in your unzipped folder. Click OK to start running BIOS Flash.



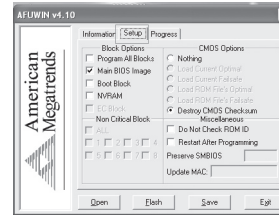
- Click on the Information icon. Specify the location of your back-up file and your new BIOS file. Click Open when you are ready to reset your BIOS with new settings.



- Choose the BIOS ROM file you download from GBT website and press Open.



- Click on Setup icon (please use the default setting) and click Flash to start BIOS Flash. The status of the execution will be shown in the pop-up progressive window. Please do not interrupt the process of the execution for the program to be properly executed.



- The system now will be shut down for the program to be successfully completed. Please restart your system to complete the BIOS update.



### 3.4 Graphic System

Your computer has a high-performance graphics system, which can easily handle the demands of today's multimedia computing.

#### ► Screen Controls ◀

##### Brightness

Function keys can increase or decrease the brightness of the monitor.

- <Fn> + <F6> decreases the LCD panel brightness
- <Fn> + <F7> increases the LCD panel brightness

##### Resolution

1. Click My Computer/Control Panel/Appearance and Themes/Display. Click the Settings tab. The dialog box indicates the monitor resolution.
2. Use the slide bar to adjust the resolution. Normally, you should use the resolution the LCD or monitor was designed for.

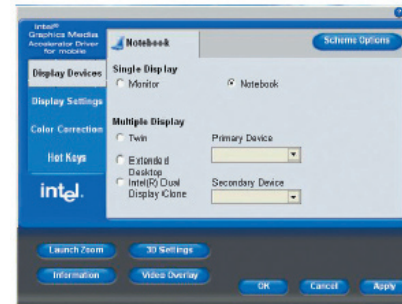
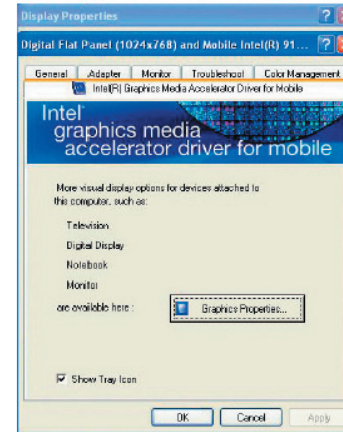
*Note: Using a lower resolution than the screen was designed for will reduce the area of the display. Using the computer in DOS mode may produce the same effect, because it uses a 640 by 480 resolution by default.*

#### ► Dual Displays ◀

With Windows system, you may use an external monitor simultaneously with your notebook's LCD. You may also use the external monitor only and disable the LCD or only use the LCD.

1. Open the Control Panel.
2. Double-click Display. The Display Properties window opens.

3. Click the Settings tab.
4. Click the Advanced button.
5. Intel(R) Graphics Media Accelerator Driver for Mobile
6. Click the Graphic properties



### Single

You can choose which device to apply as the Primary display. In Single mode, the video display hot key combination is available—you can cycle the video output by pressing the Fn + F5 keys.

### Mirror

In Mirror mode, the video display hot key combination is available—you can cycle the video output by pressing the Fn + F5 keys. If the external CRT is connected, the display on the LCD and the CRT is the same.

*Tip: to ensure trouble-free video output, the first time you use an external monitor, Chang the output in the Display properties dialog box. After successfully switching modes, you may use the video function keys.*

*Note: Light or dark dots may appear on the LCD due to technical limitations of LCD manufacturing. This will not effect normal operation of the LCD.*

## 3.5 Protecting Your N211U Notebook Computer

N211U Notebook Computer offers both hardware and software locks security features to protect it.

Using a computer security lock:

A security keylock notch located on the rear panel of the computer lets you connect a Kensington-compatible computer security lock.



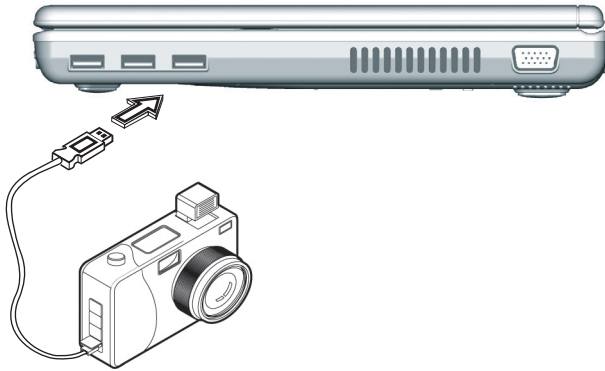


## Chapter 4 Connecting to Peripherals

This chapter describes how to connect peripheral devices to your N211U notebook computer with step-by-step instructions.

## 4.1 Using USB Port

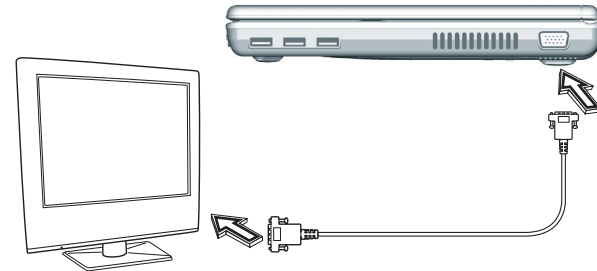
USB port allows multiple devices to run simultaneously on a computer, with peripherals such as floppy drive, mouse, digital cameras, scanners, printers, optical disk drive, keyboards, games devices and acting as additional plug-in sites, or hubs.



## 4.2 Connecting to an External Monitor

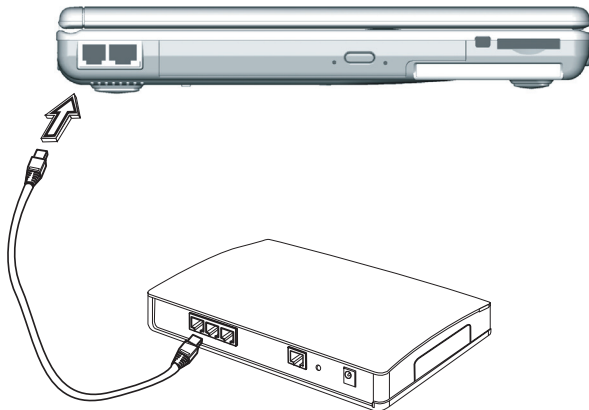
The notebook has a VGA monitor port to connect your computer to an external monitor. Please do the following steps to connect an external monitor.

1. Locate the 15-pin VGA monitor port on the right side of your notebook and connect the video signal cable from the external monitor (or the VGA adapter) to the monitor port.
2. Connect the power cable from the external monitor to a power outlet and turn on the monitor.
3. On your notebook, click the right touchpad button on the Windows desktop to open the desktop menu. Click Properties to open the Display Properties window.
4. In the Display Properties window, click Advanced in the Settings tab. Click the Intel Extreme Graphics tab.
5. You are now able to select the appropriate options to change the display to an external monitor.
6. Adjustments to screen resolution and color depth can also be made in this dialog box.



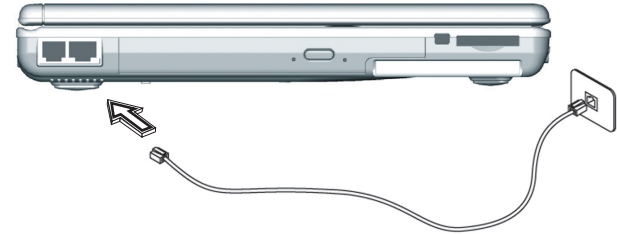
### 4.3 Using the Modem Port

1. Locate the twisted-pair cable in the accessories box in notebook shipping carton. Each end of the cable has a RJ-45 connector.
2. Connect one end of the cable into the network wall outlet or HUB.
3. Connect the other end of the cable into the computer RJ-45 LAN port.



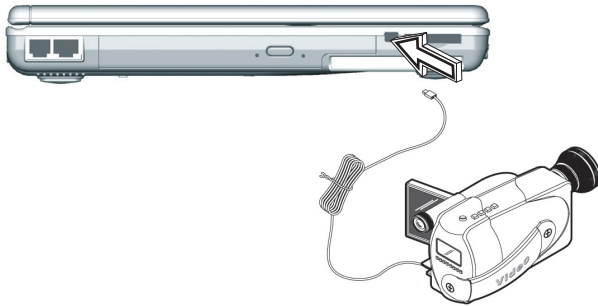
### 4.4 Using the LAN Port

The built-in fax/data modem provides on standard phone connector.



## 4.5 IEEE 1394 Port

With built-in IEEE 1394 port, your notebook computer enables the peripheral devices in transmitting digital video data or data backup. The Windows system will automatically recognize it in installing a suitable driver for it. Moreover, you should install the driver of peripheral device to connect with the IEEE 1394 port, for details please refer to the manual that comes with your peripheral devices.



## 4.6 PC Card Slot

The PC card slot can be used as an interface between your computer and a variety of communications devices, such as network adapters, fax/modems or provide additional data storage capacity. Your computer's PC card slot supports PCMCIA Type II and 32-bit CardBus.

### ► Installing a Card ◀

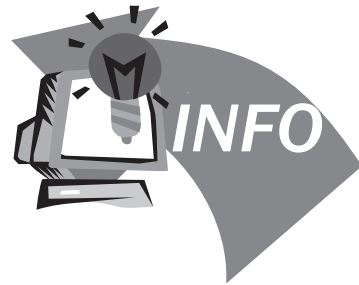
1. The top side of a PC card is usually identified with a label. Insert the card into the slot with the label side up and the edge with pinhole contacts going in first.
2. Insert the card into the slot. You will feel some resistance as the card slides into the back of the slot.
3. PC cards require drivers, or a program that allows the operating system to use a specific device. Many drivers are included with Windows, but if not, you will be prompted to install the driver included with your card.
4. The computer will beep twice to indicate successful installation. A single beep means that there was a problem recognizing the card.



### ► Removing a Card ◀

1. Press the eject button on the card slot to release the eject button. Press the eject button again to release the card.





## Chapter 5 Troubleshooting

In this chapter we list some normal problems that you might meet in the future and tell you how to resolve these problems.

Troubleshooting



ENGLISH

## 5.1 Frequently Asked Questions

- ◆ My screen seems to time out too quickly. I have to constantly hit a key or move the mouse in order to bring it back. How can I adjust the screen time-out?

This is part of Windows Power Management. Access Power Management by clicking on Start / Settings / Control Panel / Power Management. Adjust the display time-out by selecting a time next to the Turn off monitor option. You may also select different time-out values for adapter and battery power states.

- ◆ I've heard that cleaning up and rearranging files on the hard drive will improve the startup speed of my programs. How do I do this?

Hard disk maintenance can improve the startup speed of programs. This maintenance includes deleting unnecessary files, and defragmenting, which rearranges data into more efficient groupings. Windows includes utilities for performing these maintenance tasks. Run Disk Cleanup to remove unnecessary files, and Disk Defragmenter to defragment the hard drive. For more information, refer to Windows documentation.

- ◆ The internal fax/modem dial tone sound is too low. How can I increase the volume?

There are two methods to adjust the volume of the internal fax/modem dial tone:

Method 1: To Start/Setting/Control panel/Phone and Modem Options/Modem/Properties/Modem/Speaker Volume Adjust. Move the slider to adjust the modem speaker volume.

Method 2: Use the volume control button on the front of the computer.

- ◆ What kind of external microphone can I use with my notebook computer?

You will need to use a self-amplifying microphone.

- ◆ There is feedback noise coming from my speakers. What can I do?

Double click on the Speaker icon on the task bar. Then, under Microphone Balance, check the Mute box.

- ◆ Because of a software problem, I was unable to shut down power normally. I pressed the power button to force a power off, but it didn't work. How can I force a power off?

Make sure you press the power button for at least 4 seconds. Normally, this will force a power off. If this does not work, you can shut down the computer by inserting a needle into the reset button pinhole. (The reset button locate on the computer bottom side.)

- ◆ Why can't I charge the battery of my portable computer after it

was out of use for some time?

After portable computers have not been used for a long time (more than one month), the batteries will go into the low voltage protection mode due to data back-ups and natural electrical discharge. At that point, restoring normal voltage will require slow charging over a period of several hours. Calibration can be performed after the battery has returned to a normal condition.

◆ My computer alerts “CMOS Battery Low”, what can I do?

If you keep your computer in no power situation (unplug the computer from the power outlet and remove battery at the same) over 45 days, your data in CMOS will be lost.

Please reconfigure your CMOS by following steps:

1. Press Del to enter the BIOS setup utility.
2. Select “Load Optional Defaults?”. When you see the following prompt, choose <OK> and then press <Enter>.
3. Select “Save Changes and Exit”. When you see the following prompt, choose <OK> and then press <Enter> to restart your computer.





## Appendix A Specifications

This appendix gives information on technical and hardware specifications of N211U notebook computer. Please note that the information mentioned here may not be exactly the same with your notebook computer as specification is subject to change without notice or modifying this manual.

**Microprocessor**

- Intel® new generation 90NM Dothan Processor 1.60~2.13 GHz or higher with FSB 533 MHz
- Intel® new generation 90NM Celeron® M Processor 1.3~1.5 GHz or higher

**L2 Cache**

- Intel® Dothan Processor (L2 Cache 2MB)
- Intel® Celeron® M Processor (L2 Cache 1MB)

**Core Logic**

- Intel® Alviso 915GM/ ICH6-M

**Memory**

- 256/512 MB of DDR333 SDRAM standard, upgradeable to 2048 MB with dual SO-DIMM modules.
- 512KB flash ROM BIOS

**Data Storage**

- 2.5", 9.5mm, UltraDMA-100 hard disk, available in 40GB/ 60GB/80GB
- One internal optical drive (DVD-Combo/ DVD-Dual/ Super Multi as Option)
- 4-in-1 SD/ MMC/ MS/ MSPRO Card Reader

**Display and Video**

- Thin-Film Transistor (TFT) displaying at: 12.1" XGA (1024X768) resolution
- Simultaneous LCD and CRT display support
- Dual independent display

**Connectivity**

- Intergrated 10/100 Mbps Fast Ethernet connection
- Build-in 56Kbps fax/data modem
- Three Universal Serial Bus (USB) 2.0 ports
- Intel® 802.11b+g /802.11a+b+g dual-band Wireless LAN (Option)

**Audio**

- AC'97 stereo audio
- Dual Speakers and one internal microphone
- Separate audio ports for headphone-out and microphone-in devices

**Keyboard and pointing devices**

- 84(US) /87(JP)-keys Windows keyboard
- Ergonomically-centered touchpad pointing device with scroll function

**I/O ports**

- One Type II PC Card slot
- One RJ-11 phone jack (V.92, 56Kbps modem)
- One RJ-45 network jack
- One DC-in jack (AC adapter)
- One VGA port
- One speaker/headphone-out jack (3.5mm mini jack)
- One MIC-in jack (3.5mm mini jack)
- Three USB 2.0 ports
- 4-in-1 SD/ MMC/ MS/ MC Pro card reader
- One IEEE1394 port

---

Weight(with battery and optical drive)

- 12.1" display model: about 1.9 Kg (4.19 lbs)

Dimensions

- 225(W)x275(D)x30.8~32.8mm

Power

- 65W AC adapter 19V 3.42A



## Appendix B Service Center

This appendix gives information about world wide service of your N211U notebook computer.

Appendix 

**ENGLISH**

**Taiwan ( Headquarters ) GIGA-BYTE TECHNOLOGY CO., LTD.**

Address: No.6, Bau Chiang Road, Hsin-Tien, Taipei 231, Taiwan  
 TEL: +886 (2) 8912-4888  
 FAX: +886 (2) 8912-4004

How to submit a question?

Technical        Issues about using GIGABYTE products.  
 Non-technical    Sales and marketing issues

WEB Address(English): <http://www.gigabyte.com.tw/>  
 WEB Address(Chinese): <http://chinese.giga-byte.com/>

**U.S.A.    G.B.T. INC.**

TEL: +1 (626) 854-9338  
 FAX: +1 (626) 854-9339  
 WEB Address: <http://www.giga-byte.com/>

**Germany    G.B.T. TECHNOLOGY TRADING GMBH**

TEL: +49-40-2533040 (Sales)    +49-1803-428468 (Tech.)  
 FAX: +49-40-25492343 (Sales)    +49-1803-428329 (Tech.)  
 WEB Address: <http://www.gigabyte.de/>

**Japan        NIPPON GIGA-BYTE CORPORATION**

TEL: +81-3-5791-5438  
 FAX: +81-3-5791-5439  
 WEB Address: <http://www.gigabyte.co.jp/>

**China        G.B.T. TECH. TRADING CO., LTD.**

Shanghai  
 TEL: +86-21-63410999  
 FAX: +86-21-63410100  
 WEB Address: <http://www.gigabyte.com.cn/>  
 GuangZhou  
 TEL: +86-20-87586074  
 FAX: +86-20-85517843  
 WEB Address: <http://www.gigabyte.com.cn/>  
 Beijing  
 TEL: +86-10-62102838  
 FAX: +86-10-62102848  
 WEB Address: <http://www.gigabyte.com.cn/>  
 Chengdu  
 TEL: +86-28-85236930  
 FAX: +86-28-85256822  
 WEB Address: <http://www.gigabyte.com.cn/>  
 Wuhan  
 TEL: +86-27-87851061  
 FAX: +86-27-87851330  
 WEB Address: <http://www.gigabyte.com.cn/>  
 Xian  
 TEL: +86-29-85531943  
 FAX: +86-29-85539821  
 WEB Address: <http://www.gigabyte.com.cn/>  
 Shenyang  
 TEL: +86-24-23960918  
 FAX: +86-24-23960918-809  
 WEB Address: <http://www.gigabyte.com.cn/>



**U.K. G.B.T. TECH. CO., LTD.**

TEL: +44-1908-362700

FAX: +44-1908-362709

WEB Address: <http://uk.giga-byte.com/>

**Australia GIGABYTE TECHNOLOGY PTY. LTD.**

TEL: +61 3 85616288

FAX: +61 3 85616222

WEB Address: <http://www.giga-byte.com.au/>

**Singapore GIGABYTE SINGAPORE PTE. LTD.**

WEB Address: <http://www.gigabyte.com.sg/>

**The Netherlands GIGA-BYTE TECHNOLOGY B.V.**

TEL: +31 40 290 2088 FAX: +31 40 290 2089

NL Tech.Support : 00800-GIGABYTE

WEB Address: <http://www.giga-byte.nl/>

**France GIGABYTE TECHNOLOGY FRANCE S.A.R.L.**

Add: 47 allée des impressionnistes , immeuble Gauguin- 93420  
Villepinte (France) TEL: 00800-GIGABYTE

WEB Address: <http://www.gigabyte.fr/>

**Russia Moscow Representative Office Of Giga-Byte Technology Co., Ltd.**

WEB Address: <http://www.gigabyte.ru/>

**Poland Office of GIGA-BYTE TECHNOLOGY Co., Ltd. in  
POLAND**

WEB Address: <http://www.gigabyte.pl/>

**Czech Republic Representative Office Of GIGA-BYTE Technology Co., Ltd. in CZECH REPUBLIC**

WEB Address: <http://www.gigabyte.cz/>

**Romania Representative Office Of GIGA-BYTE Technology Co., Ltd. in Romania**

WEB Address: <http://www.gigabyte.com.ro/>

**Serbia & Montenegro Representative Office Of GIGA-BYTE Technology Co., Ltd. in SERBIA & MONTENEGRO**

WEB Address: <http://www.gigabyte.co.yu/>