



GR-ES915

iSCSI Storage Array

Quick Installation Guide

Ver: 1.0

Table of Contents

<u>SAFETY, CARE AND REGULATORY INFORMATION</u>	<u>3</u>
<u>CHAPTER 1 PACKING LIST</u>	<u>7</u>
<u>CHAPTER 2 SYSTEM OVERVIEW</u>	<u>8</u>
<u>CHAPTER 3 SYSTEM SPECIFICATION.....</u>	<u>10</u>
<u>CHAPTER 4 OPEN FRONT BEZEL</u>	<u>11</u>
<u>CHAPTER 5 RELEASE HARD DISK TRAY</u>	<u>12</u>
<u>CHAPTER 6 HARD DISK INSTALLATION.....</u>	<u>13</u>
<u>CHAPTER 7 OPEN TOP COVER</u>	<u>14</u>
<u>CHAPTER 8 ENTER ADMINISTRATOR WEB UI.....</u>	<u>15</u>

Safety, Care and Regulatory Information

Important safety information

Read and follow all instructions marked on the product and in the documentation before you operate your system. Retain all safety and operating instructions for future use.

- The product should be operated only from the type of power source indicated on the rating label.
- If your computer has a voltage selector switch, make sure that the switch is in the proper position for your area. The voltage selector switch is set at the factory to the correct voltage.
- The plug-socket combination must be accessible at all times because it serves as the main disconnecting device.
- All product shipped with a three-wire electrical grounding-type plug only fits into a grounding-type power outlet. This is a safety feature. The equipment grounding should be in accordance with local and national electrical codes. The equipment operates safely when it is used in accordance with its marked electrical ratings and product usage instructions
- Do not use this product near water or a heat source.
- Set up the product on a stable work surface or so as to ensure stability of the system.
- Openings in the case are provided for ventilation. Do not block or cover these openings. Make sure you provide adequate space around the system for ventilation when you set up your work area. Never insert objects of any kind into the ventilation openings.
- To avoid electrical shock, always unplug all power cables and modem cables from the wall outlets before removing covers.
- Allow the product to cool before removing covers or touching internal components.

Precautions for Products With Laser Devices

Observe the following precautions for laser devices:

- Do not open the CD-ROM drive, make adjustments, or perform procedures on a laser device other than those specified in the product's documentation.
- Only authorized service technicians should repair laser devices.

Precautions for Products With Modems, Telecommunications, or Local Area Network Options

Observe the following guidelines when working with options:

- Do not connect or use a modem or telephone during a lightning storm. There may be a risk of electrical shock from lightning.
- To reduce the risk of fire, use only No. 26 AWG or larger telecommunications line cord.
- Do not plug a modem or telephone cable into the network interface controller (NIC) receptacle.
- Disconnect the modem cable before opening a product enclosure, touching or installing internal components, or touching an uninsulated modem cable or jack.
- Do not use a telephone line to report a gas leak while you are in the vicinity of the leak.

Federal Communications Commission (FCC) Statement

Note: This equipment has been tested and found to comply with the limits for a Class B digital device, pursuant to Part 15 of the FCC Rules. These limits are designed to provide reasonable protection against harmful interference when the equipment is operated in a commercial environment. This equipment generates, uses, and can radiate radio frequency energy and, if not installed and used in accordance with the instruction manual, may cause harmful interference to radio communications. Operation of this equipment in a residential area is likely to cause harmful interference in which case the user will be required to correct the interference at his own expense. Properly shielded and grounded cables and connectors must be used in order to meet FCC emission limits. Neither the provider nor the manufacturer are responsible for any radio or television interference caused by using other than recommended cables and connectors or by unauthorized changes or modifications to this equipment. Unauthorized changes or modifications could void the user's authority to operate the equipment.

This device complies with Part 15 of the FCC Rules. Operation is subject to the following two conditions:

- (1) this device may not cause harmful interference, and
- (2) this device must accept any interference received, including interference that may cause undesired operation.

FCC part 68 (applicable to products fitted with USA modems)

The modem complies with Part 68 of the FCC Rules. On this equipment is a label that contains, among other information, the FCC registration number and Ringer Equivalence Number (REN) for this equipment. You must, upon request, provide this information to your telephone company. If your telephone equipment causes harm to the telephone network, the Telephone Company may discontinue your service temporarily. If possible, they will notify in advance. But, if advance notice is not practical, you will be notified as soon as possible. You will be informed of your right to file a complaint with the FCC.

Your telephone company may make changes in its facilities, equipment, operations, or procedures that could affect proper operation of your equipment. If they do, you will be notified in advance to give you an opportunity to maintain uninterrupted telephone service.

The FCC prohibits this equipment to be connected to party lines or coin-telephone service.

The FCC also requires the transmitter of a FAX transmission be properly identified (per FCC Rules Part 68, Sec. 68.381 (c) (3)).

/ for Canadian users only /

Canadian Department of Communications Compliance Statement

This digital apparatus does not exceed the Class B limits for radio noise emissions from digital apparatus as set out in the radio interference regulations of Industry Canada.

Le présent appareil numérique n'émet pas de bruits radioélectriques dépassant les limites applicables aux appareils numériques de Classe B prescrites dans le règlement sur le brouillage radioélectrique édicté par Industrie Canada.

DOC notice (for products fitted with an Industry Canada-compliant modem)

The Canadian Department of Communications label identifies certified equipment. This certification means that the equipment meets certain telecommunications network protective, operational and safety requirements. The Department does not guarantee the equipment will operate to the user satisfaction.

Before installing this equipment, users ensure that it is permissible to be connected to the facilities of the local Telecommunications Company. The equipment must also be installed using an acceptable method of connection. The customer should be aware that compliance with the above conditions might not prevent degradation of service in some situations.

Repairs to certified equipment should be made by an authorized Canadian maintenance facility designated by the supplier. Any repairs or alterations made by the user to this equipment, or equipment malfunctions, may give the telecommunications company cause to request the user to disconnect the equipment.

Users should ensure for their own protection that the electrical ground connections of the power utility, telephone lines and internal metallic water pipe system, if present are connected together. This precaution may be particularly important in rural areas.

Caution: Users should not attempt to make such connections themselves, but should contact the appropriate electric inspection authority, or electrician, as appropriate.

NOTICE: The Load Number (LN) assigned to each terminal device denotes the percentage of the total load to be connected to a telephone loop which is used by the device, to prevent overloading. The termination on a loop may consist of any combination of devices subject only to the requirement that the sum of the Load Numbers of all the devices does not exceed 100.

/ for European users only /

European Community Directive Conformance Statement

This product is in conformity with the protection requirements of EC Council Low Voltage Directive (Safety) 73/23/EEC, EMC Directive 89/336/EEC on the approximation of the laws of the Member States relating to electro-magnetic compatibility.

R&TTE Directive (applicable to products fitted with European modems)

This modem does not require any physical and/or software additional switch settings from the User and is suitable for use only on telephone lines provided with Multi-Frequency Dialing facilities.

The equipment has been approved in accordance with Council Decision 99/5/EC on radio equipment and terminal telecommunication equipment and the mutual recognition of their conformity.

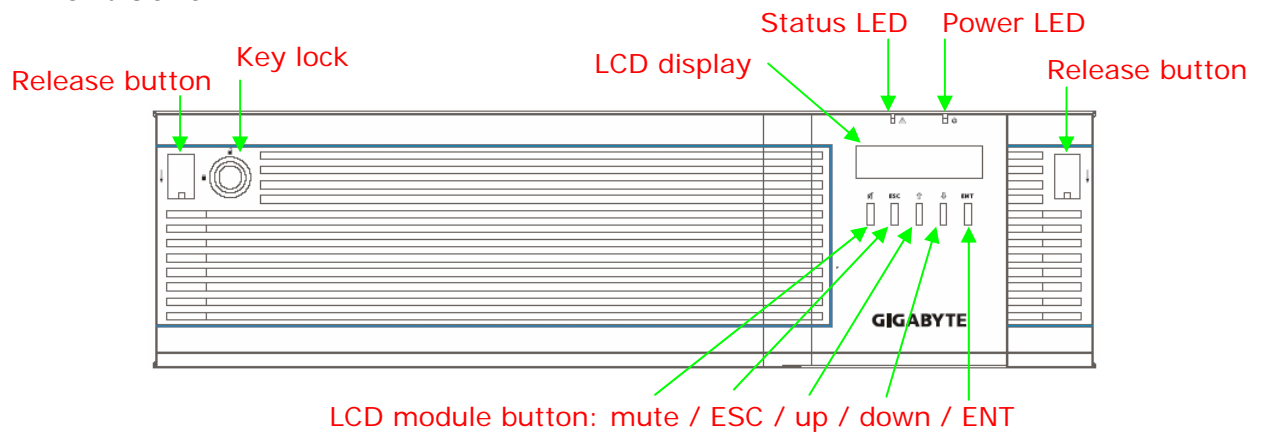
Chapter 1 Packing List

GR-ES915 packing content list

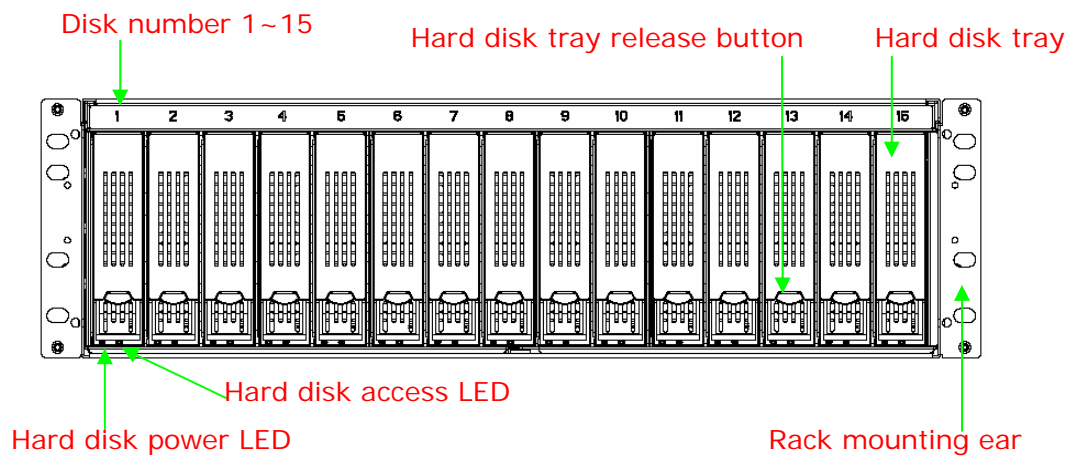
1. GR-ES915 system * 1
2. Quick installation guide * 1
3. Software manual CD * 1
4. Power cord * 1
5. Rack mount kit * 2
6. Front bezel key * 2
7. Screw set * 1

Chapter 2 System Overview

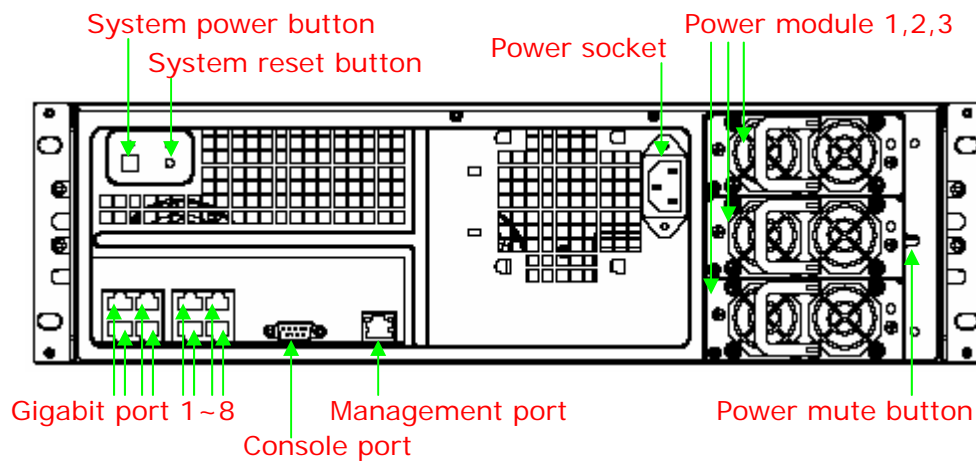
Front bezel



Front view



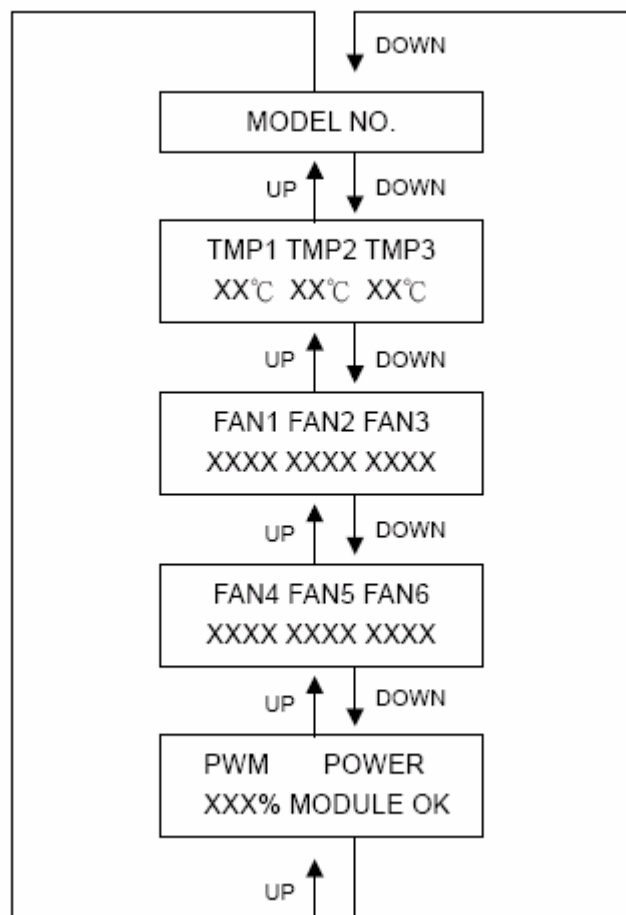
Rear view



Light definition

	Color	On	Blank	Off
Power	Blue	System power on	X	System power off
Status	Red	System ready	X	System not ready
HDD power LED	Blue	HDD connected	X	HDD not connected
HDD access LED	Green	X	HDD access	HDD no access

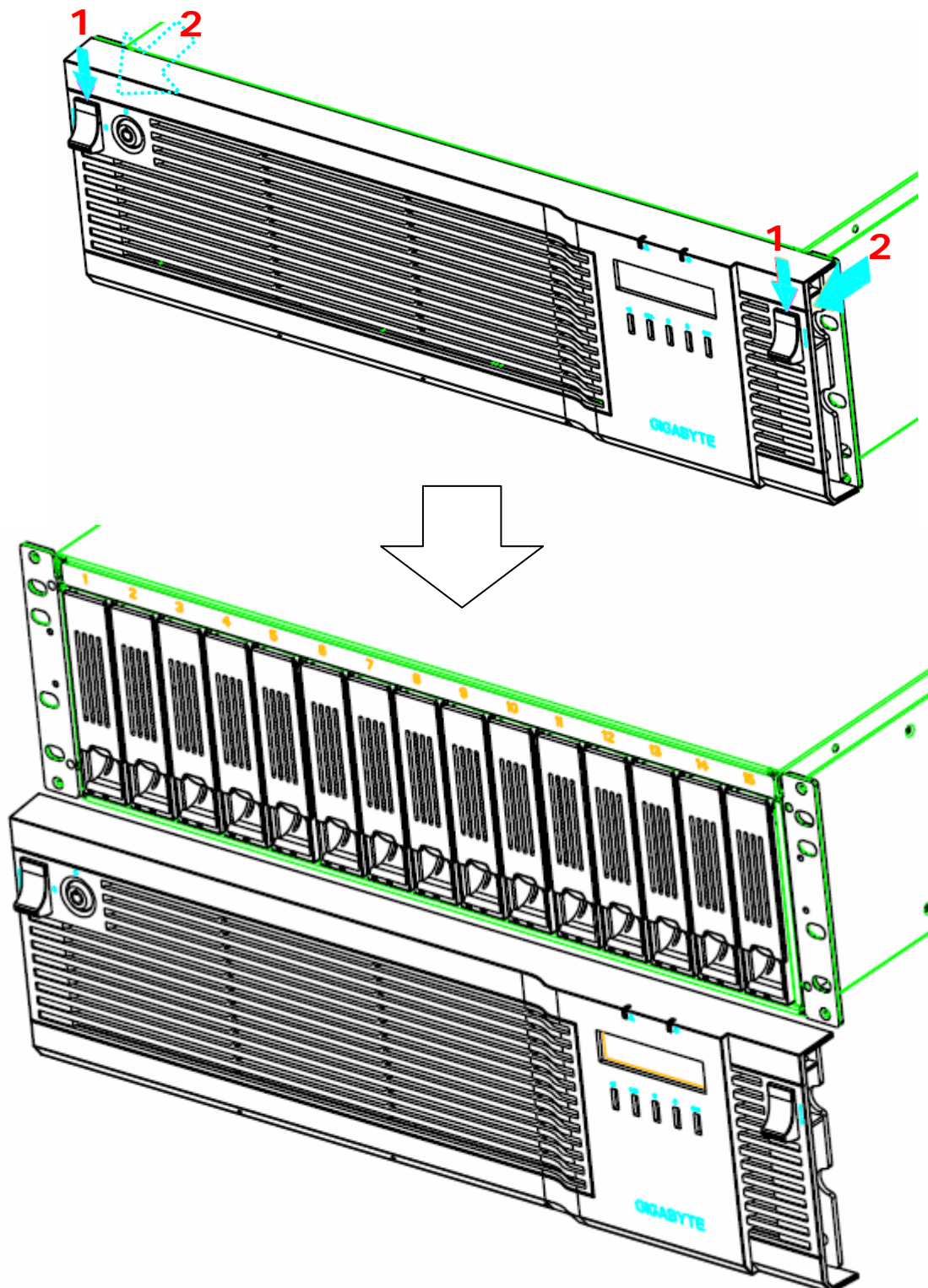
LCD module display



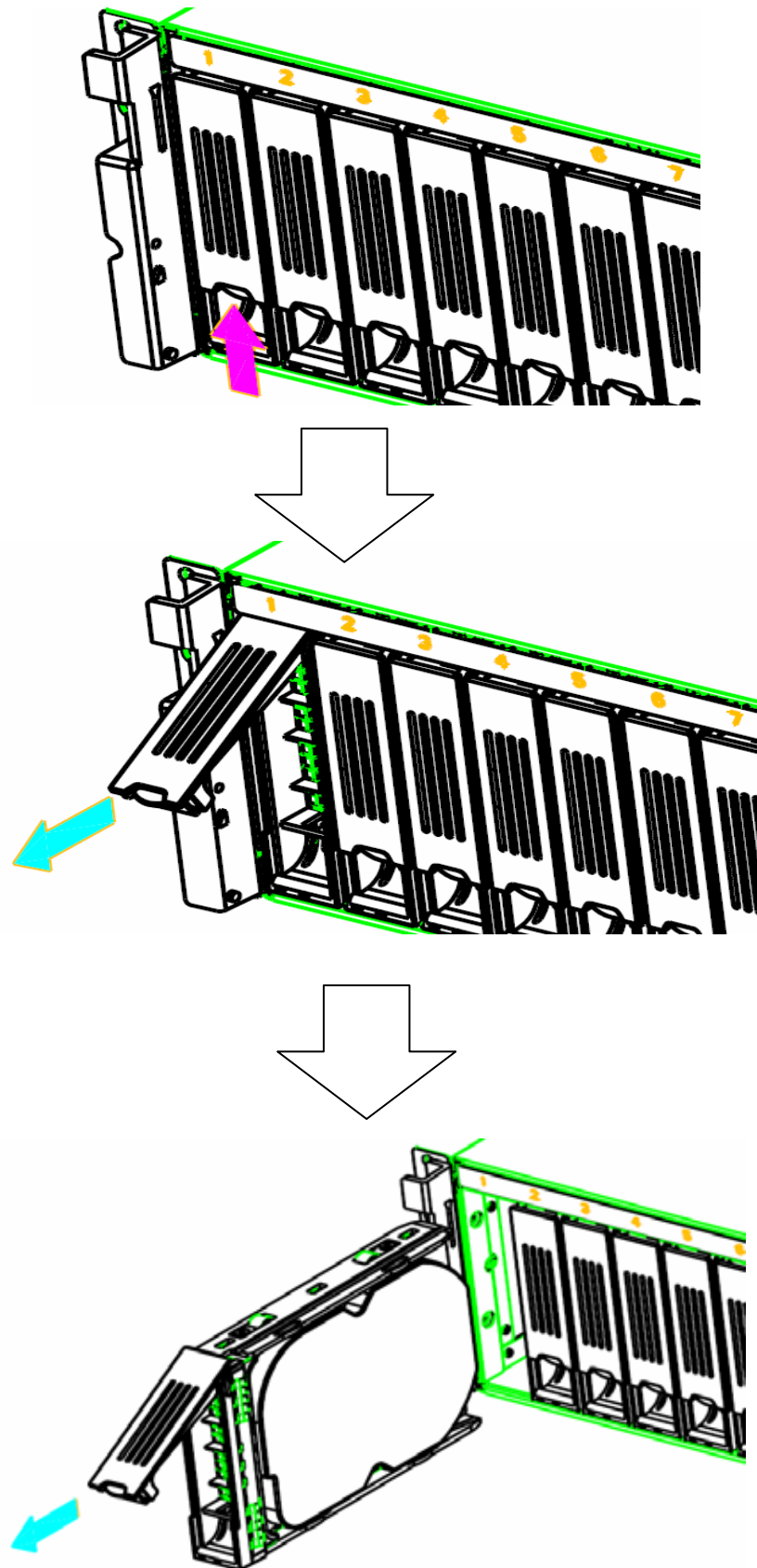
Chapter 3 System Specification

Model	GR-ES915
	iSCSI Storage Array
Controller	
Processor	iStor GSATX-816
Cache Memory	512MB ECC+REG DDR SDRAM Up to 4GB
Host Channel	iSCSI, Gigabyte *8
Disk Channel	Serial ATA-I/Serial ATA-II
RAID Level	0,1,10,5,JBOD
Backup Battery Unit	Supported
Platform Support	Operation System Independent
Disk Support	
Number	15
Type	Serial ATA-I/Serial ATA-II
RPM	7200rpm
Size	160GB, 250GB, 400GB, 500GB, 750GB
Enclosure	
Hot-Swap Module	Power Supply, FAN, Hard Disk
Security	Front Panel with Key lock
LCD Module	Display Environment Status
Physical	
Power	Redundant, 700W (350W, n+1)
Dimension	440(w)*131.9(h)*628.2(d), 3U
Weight (without HDD)	20kg
Installation	Rack Mount Kits

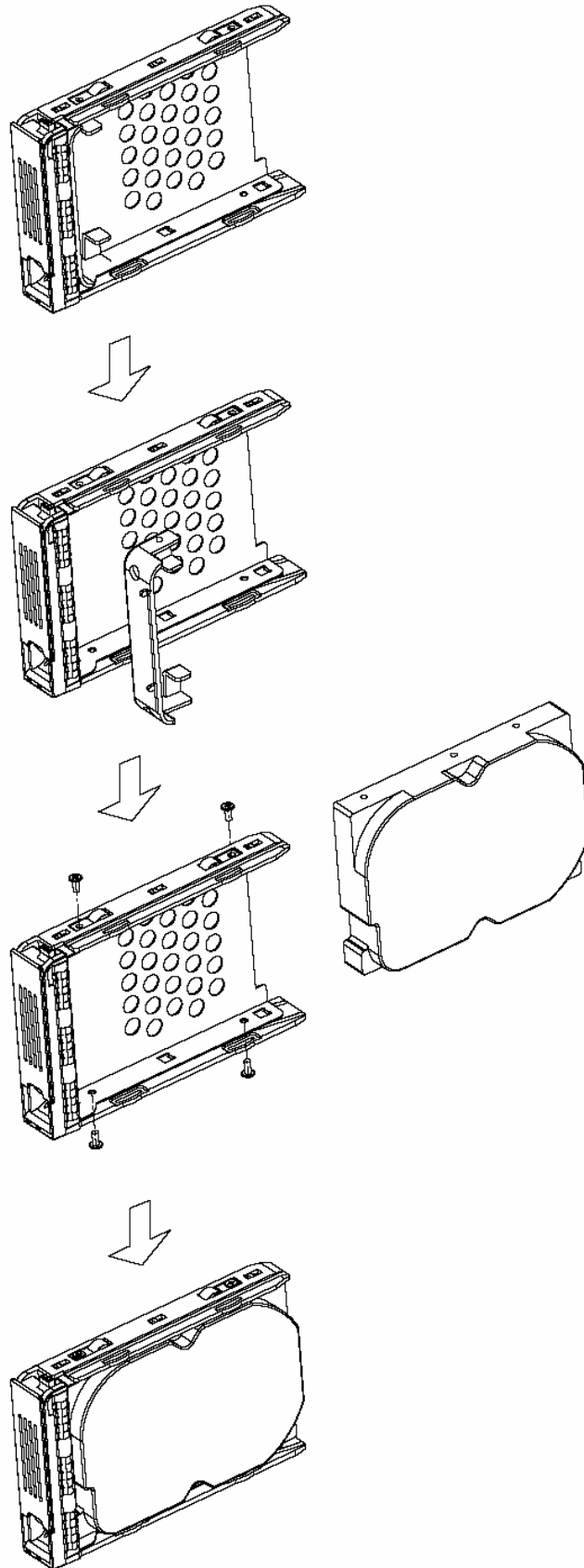
Chapter 4 Open Front Bezel



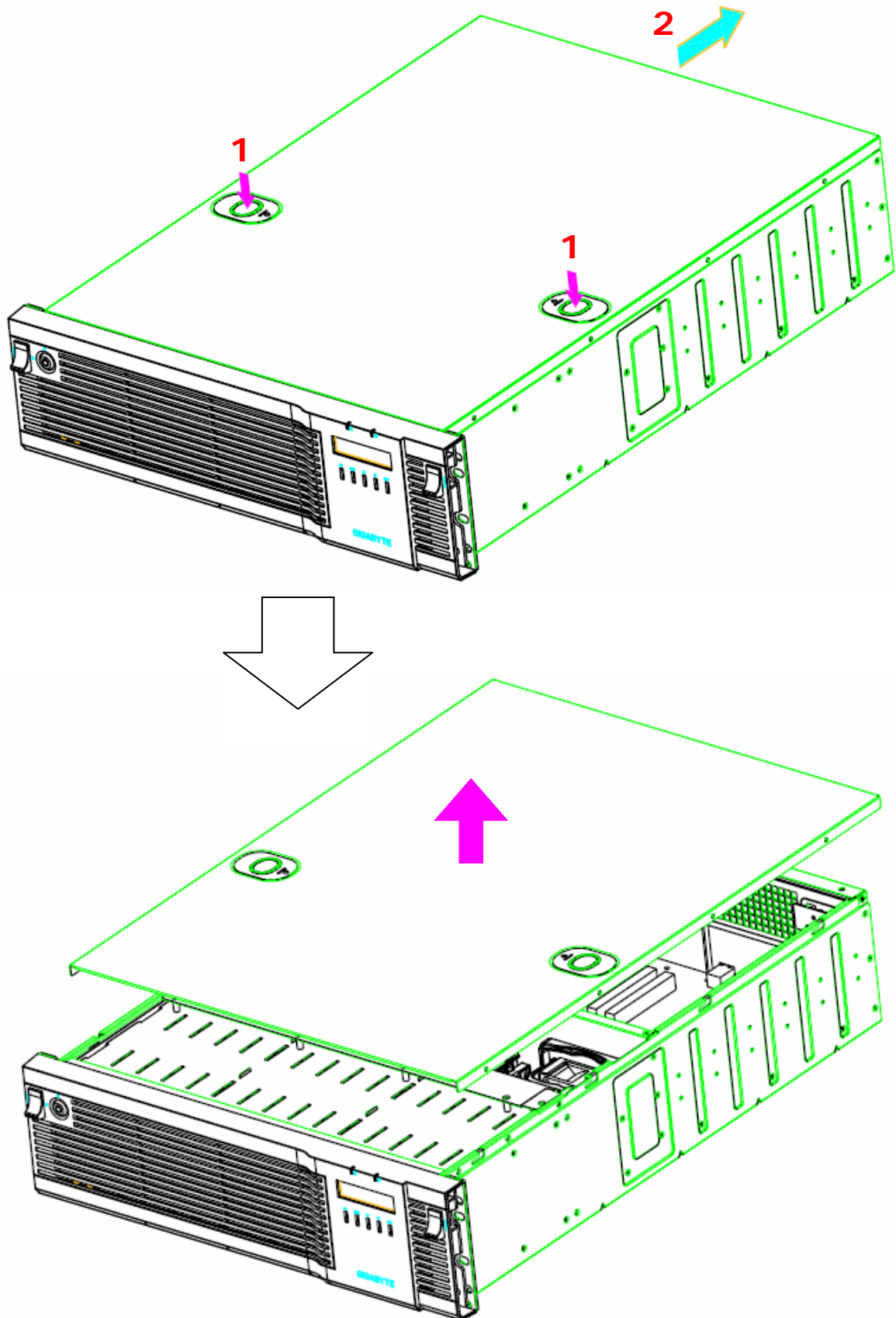
Chapter 5 Release Hard Disk Tray



Chapter 6 Hard Disk Installation



Chapter 7 Open Top Cover



Chapter 8 Enter Administrator Web UI

1. Power-up the GigaStorATX Storage Controller.
2. Wait for a while until (3mins-5mins) GigaStorATX is getting ready.
3. In the browser's address bar, type the default IP address (**192.168.1.1**) for the GigaStorATX management console and press the Enter key.
4. The GigaStorATX console management Log in screen appears.



If the GigaStorATX management console does not start automatically return to the HTTP://192.168.1.1 browser window and click on the click here link. If you are having problems starting the GigaStorATX Management Console you may need to install and or reinstall Java and/or Java Web start by clicking the lower click here link.



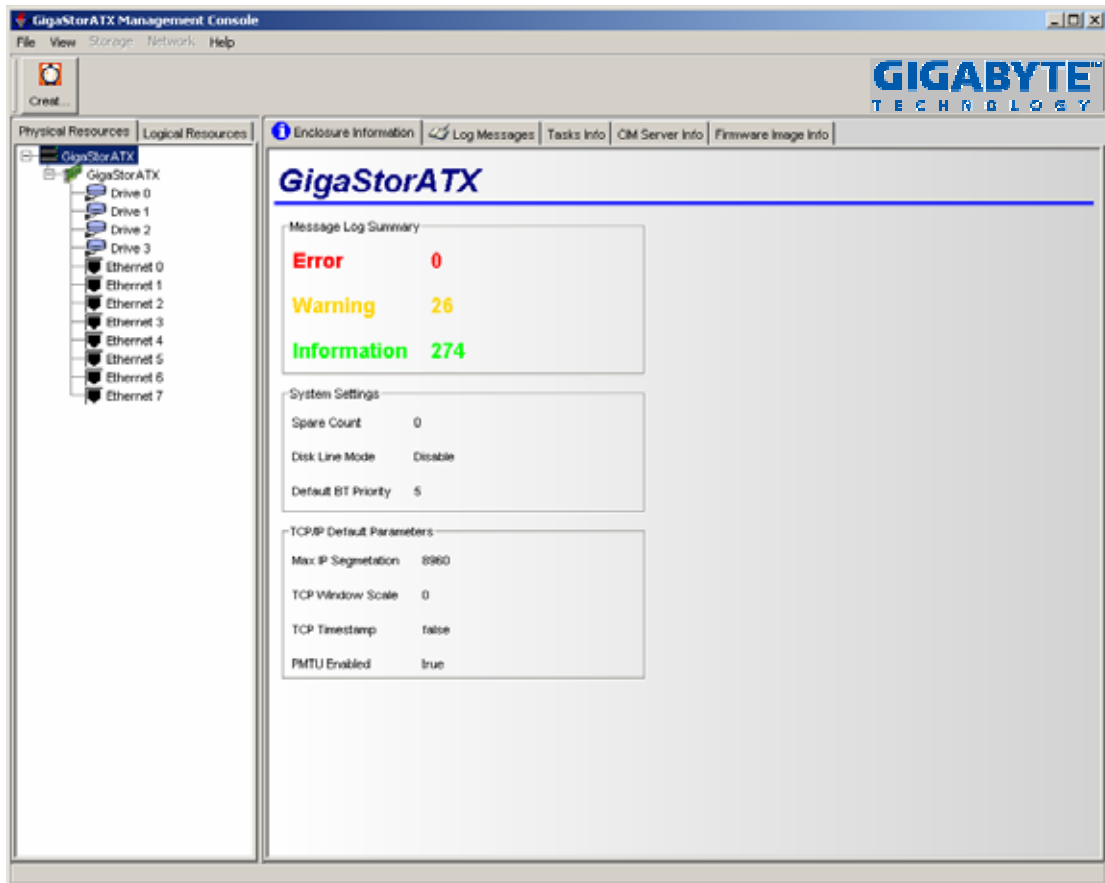
The IP address on your PC's NIC must be on the same IP subnetwork (192.168.1.x) as the management port.

5. Enter your username and password in the appropriate text boxes.
The first time you log in, you must use the default username (**admin**) and password (**admin**).



If desired, you can click the More button to view the IP address you will be connecting to and change it if necessary.

6. Click the OK button. A screen appears with a progress bar as the connection is being made to the GigaStorATX. Once the connection is made, the main screen appears.



Note: Please check the software manual CD for detail software operating information.