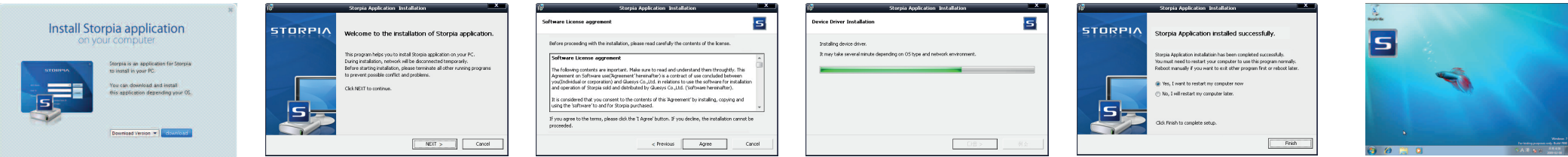


Device Step-by-Step Installation

Turn on your power button and check the status LED is orange color for booting. When system booting is done, status LED will be blue color.
If you still can not access your device, please go to http://NAS_IP:9000 with your browser and input product key. Product key is in the rear of your device.
MY.STORPIA server provides the ability to access the device from internet, after registering you can access the device easily without memorizing domain name or device IP. Please check “Accessing and using the device” item for more detailed information.

Install Application

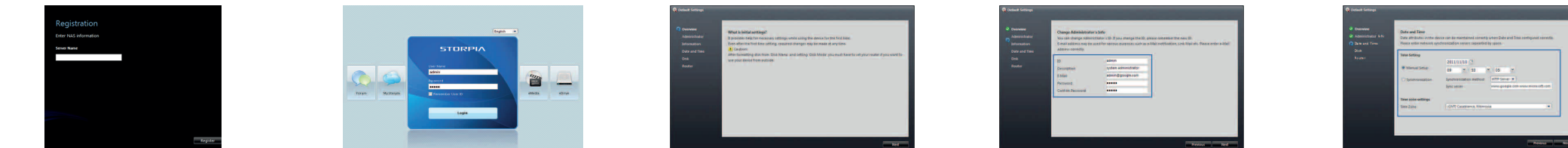


01. Download eDrive application in GIGABYTE official technical support website
02. Execute download 'Storpia_setup.exe' file. Click "Next" to start installation. During installation the network may be lost temporarily.
03. Agree to the terms of software use. You must have to agree with software use terms and conditions to use the software.
04. The application installed successfully.
05. Application installation completed. To use the application properly please restart your computer.
06. After rebooting PC you will be able to see shortcut icon created on desktop.

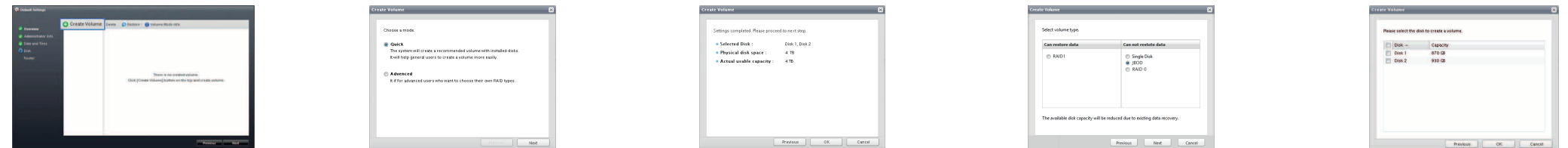
Device Setting



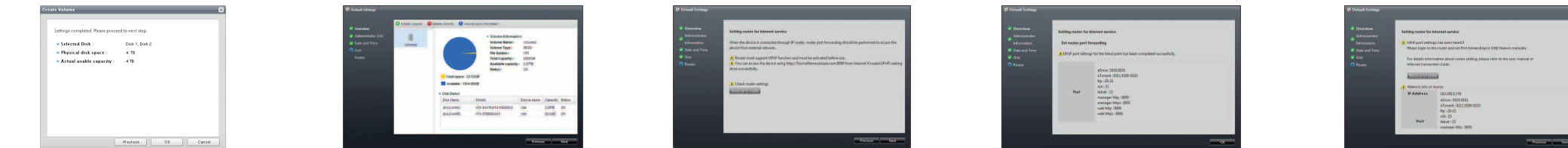
01. Execute eDrive application on desktop, click "Search" button from login page. Default ID & password is admin/admin
02. Select the device you want to access from search result and click "OK".
03. After login it will generate tray icon and menu window. click "Home".
04. Agree to the terms of software use. You must have to agree with software use terms and conditions to use the software.
05. Input product key for registration, please check system rear side for device product key.



06. Input NAS name for your device as you wish.
07. Enter User ID and Password to login. Default ID and password is admin/admin. (For security purpose please change admin password while setting the device.)
08. Setup wizard to run initial configuration. Can configure Administrator information, Date and Time, Disk and Router from this wizard.
09. [Change Administrator's Info] Enter admin ID, password and email address. Please enter a valid email address as it will be used in various purpose like to send device alarms and alerts, link mails etc.
10. [Date and Time] You can set device date and time manually or can synchronize with time server automatically. Device date and time should set correctly so it can maintain information of file properly.



11. [Disk] Click "Create Volume" located at top left to create new volume.
12. Choose volume creation mode. "Quick" mode is for general users, advance users are recommended to go for "Advanced" mode.
13. [Quick] It will auto generate volume creation mode depending on attached disks. Check selected disk and volume, capacity and click ok to create volume. *Please note that all existing data on the disk will be deleted!!
14. [Advanced] Select volume type. The available disk capacity will be reduced due to existing data recovery.
15. [Advanced] You have to select at least one disk or more to create volume.

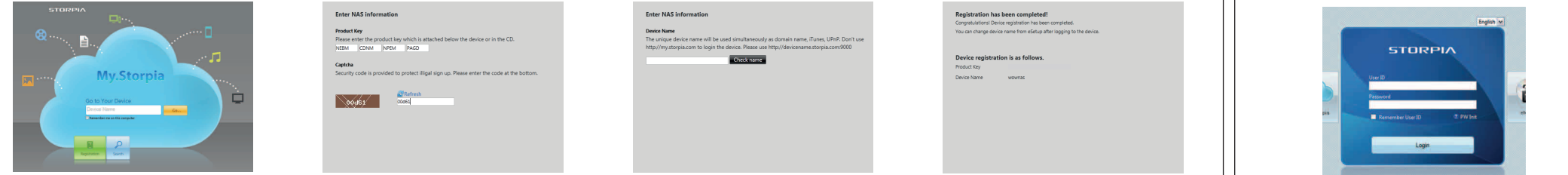


16. [Advanced] Check selected disks, volume type, capacity and click "OK". Please note before finalizing volume creation that all existing data on disk will be deleted.
17. You can check volume creation result after creating the volume. Press "Next" to continue with setting process.
18. [Router] Set router for internet service. Auto setup can be done if your Router supports UPnP.
19. [Router] UPnP port settings for listed ports has been completed successfully. Click "OK" button to complete default settings.
20. [Router] If router settings failed, login to the router and set Port forwarding or DMZ feature manually. Please refer to the user manual or Internet Connection Guide.

Accessing and Using the Device

When general setting done you can access and use Storpia provided various functions. Access method to Storpia is as follows:

Registration from Web



01. Go to <http://my.storpia.com> and click 'Registration' located at the bottom of the page.
02. Agree with the terms and condition of product use to proceed. Enter the 16 digit product key attached at the bottom back of your device and enter captcha code.
03. Enter device name and check for duplication. This device name can be used for immediate access to the device and also as domain name, iTunes and UPnP device name.
04. After checking and completing all your registration process, click "Register" button to complete device registration.
01. If admin password is lost, access http://NAS_IP:9000 in web browser, then click "PW Init" in login screen.

Access the Device Using My.STORPIA server



01. Open your web browser and go to my.storpia.com.
02. Enter your device name to My.Storpia server and click "Go".
03. Enter ID and password when login page appears to login.
04. Please note that transfer rate will be less when you connecting Storpia through the My.Storpia server.
02. Input product key, you can find it in the rear side of your device.