

SiS 964 S-ATA User's Manual

Serial/Ultra ATA
Serial/Ultra ATA RAID 0 or 1
Serial/Ultra ATA RAID 0+1
Serial/Ultra ATA JBOD

Quick User's Guide

Version 0.1

CONTENTS

Introduction.....	1
Step 0. What is RAID.....	3
KNOW HOW	3
PERFORMANCE HINTS AND RECOMMEND SETTING	3
Step 1. Hardware Setup	5
HARD DRIVES SETUP.....	5
Step 2. Installing Software Drivers.....	8
WINDOWS 2000/XP	8
NEW WINDOWS 2000/XP INSTALLATION.....	8
EXISTING WINDOWS 2000/XP INSTALLATION	9
CONFIRMING WINDOWS 2000/XP DRIVER INSTALLATION.....	9
Step 3. BIOS Utility Operation (for RAID only).....	10
CREATING AN ARRAY FOR PERFORMANCE.....	11
CREATING A MIRROR ARRAY	13
CREATING A JBOD ARRAY	16
CREATING A STRIPE-MIRROR ARRAY	18
Step 4. SIS 964 RAID Utility Operation.....	22
VIEWING THE “CREATE RAID”	24
CREATE A RAID SET	26
VIEWING THE RAIDTYPE MEANING	33
DELETE A RAID SET	35
RAID RECOVERY OPERATION.....	38

Introduction

The 964 S-ATA controller is a hybrid solution that combines two independent SATA ports and one Ultra ATA port for support of up to two Serial ATA (Serial ATA RAID) and two Ultra ATA (Ultra ATA RAID) drives. Specifications are as follows:

Serial ATA Interface

Serial ATA (SATA) is the latest generation of the ATA interface. SATA hard drives deliver blistering transfer speeds of up to 150MB/sec. Serial ATA uses long, thin cables, making it easier to connect your drive and improving the airflow inside your PC.

- ◆ Supports 150 MB/s transfers with CRC error checking
- ◆ Large LBA support for drives over 137 GB
- ◆ Data handling optimizations including tagged command queuing, elevator seek and packet chain command

Ultra ATA Interface

- ◆ Standard ATA/IDE interface
- ◆ Supports Ultra ATA/133, Ultra ATA/100, and Ultra ATA/66 drives
- ◆ Supports CRC error checking for Ultra ATA drives
- ◆ Separate timing control for two devices attached to one ATA channel

Serial/Ultra ATA RAID Interfaces

The Serial/Ultra ATA RAID is designed to provide a cost-effective, high performance RAID solution that adds performance and/or reliability to PC desktops and/or servers using Serial ATA/150, Ultra ATA/133, Ultra ATA/100, Ultra ATA/66 hard disks.

Serial/Ultra ATA RAID function supports striping (RAID 0), mirroring (RAID 1), striping + mirroring (RAID 0+1) and span (JBOD). *Please note that the function supports **hard disk drives** only.*

With striping, identical drives can read and write data in parallel to increase performance. Mirroring increases read performance through load balancing and elevator sorting while creating a complete backup of your files. Span would increase the logic hard disk space.

Serial/Ultra ATA RAID striped arrays can double the sustained data transfer rate of Serial ATA/150 and Ultra ATA/133 drives. Serial/Ultra ATA RAID fully supports Serial ATA/150 and Ultra ATA/133 specification of up to 150MB/sec per drive, depending on individual drive specifications.

The technology also offers fault tolerant, data redundancy for entry-level network file servers or simply for desktop PC users wanting to continually protect valuable data on their PC. The Serial/Ultra ATA RAID offers RAID 1 mirroring (for two drives) to protect data. Should a drive that is part of a mirrored array fail, Serial/Ultra ATA RAID technology uses the mirrored drive (which contains identical data) to assume all data handling. When a new replacement drive is later installed, Serial/Ultra ATA RAID rebuilds data to the new drive from the mirrored drive to restore fault tolerance.

Step 0. What is RAID

Know How

This section will give you an overview about the RAID system and introduce the basic background and glossary which you need to know before using "SiS 964 RAID Controller Application".

1. **RAID:** (Redundant Array of Independent Disk Drives) use jointly several hard drives to increase data transfer rates and data security. It depends on the number of drives present and RAID function you select to fulfill the security or performance purposes or both.
2. **RAID 0:** Also known as "Striping". All of the data are distributed evenly to all of the existing drives. You gain benefits on performance because the data transfer rate is multiplied by the number of drives. However, RAID 0 has high risks of data security. All of the stored data will be lost if even any one drive in the RAID set crashes.
3. **RAID 1:** Also known as "Mirroring". Two hard drives are required. The goal of RAID 1 is to ensure data security. Data is written to two or more drives synchronously. That is, 100% duplication of data from one drive to another.
4. **RAID 0+1:** Also known as "StripeMirror". At least four hard drives are required. RAID 0+1 is a combination of RAID 0 and RAID 1. Data is striped into two drives then mirrored. It provides high performance and high data protection. This is a costly solution as RAID 1 because the two mirrored drives represent an expensive insurance.
5. **JBOD:** (Just a Bunch of Drives). Also known as "Spanning". Two or more hard drives are required. Several hard disk types configured as a single hard disk. The hard drives are simply hooked up in series. This expands the capacity of your drive and results in a useable total capacity. However, JBOD will not increase any performance or data security.

Performance hints and recommend setting

For the best performance and reliability, please read the following suggestions.

1. In serial ATA port, use Native serial ATA drives. Parallel ATA to Serial ATA converter board is *NOT* suggested.
2. In parallel ATA port, use ATA 66/100/133 hard drives
3. Use the same model hard drives.
4. If you have only two serial ATA drives, the auto-configure function will assign each on a different channel as a master drive. Using only two

parallel ATA drives to create a RAID array is *NOT* suggested. It might decrease performance.

5. Always use 80-conductor cables.
6. We strongly recommend you should use "DMA" transfer mode.
7. The recommended block size is 64K when creating RAID 0 and RAID 0+1.
8. The best selecting sequence of creating RAID 0+1 is Primary Master(1) -> Secondary Master(3) -> Primary Slave(2) -> Secondary Slave(4).

Step 1. Hardware Setup

Hard Drives setup

The 964 controller supports up to two Serial ATA hard drives and two Parallel ATA hard drives.

Any combination to 2, 3 or 4 Hard disk would combine to a strip system.

HDD Population Rules for RAID 0 (Striping)				
	Ultra ATA (Master)	Ultra ATA (Slave)	Serial ATA (Master 1)	Serial ATA (Master 2)
1	V	V	X	X
2	V	X	V	X
3	V	X	X	V
4	X	V	V	X
5	X	V	X	V
6	X	X	V	V
7	V	V	V	X
8	V	V	X	V
9	V	X	V	V
10	X	V	V	V
11	V	V	V	V

V = Install; X = Uninstall

NOTE: Storage Capacity: the number of hard drives times the capacity of the smallest drive in the disk array

Working Speed: the speed of the lowest drive in the disk array

Any of 2 Hard Disk would make a mirror system.

HDD Population Rules for RAID 1 (Mirroring)				
	Ultra ATA (Master)	Ultra ATA (Slave)	Serial ATA (Master 1)	Serial ATA (Master 2)
1	V	V	X	X

Serial ATA RAID Quick User's Guide

2	V	X	V	X
3	V	X	X	V
4	X	V	V	X
5	X	V	X	V
6	X	X	V	V

V = Install; X = Uninstall

NOTE: Storage Capacity: the capacity of the smallest drive in the disk array

Working Speed: the speed of the lowest drive in the disk array

4 Hard disk would set up a RAID 0 + 1

HDD Population Rules for RAID 0+1 (Striping + Mirroring)				
	Ultra ATA (Master)	Ultra ATA (Slave)	Serial ATA (Master 1)	Serial ATA (Master 2)
1	V	V	V	V

V = Install; X = Uninstall

NOTE: Storage Capacity: the capacity of the smallest drive in the disk array

Working Speed: the speed of the lowest drive in the disk array

Any combination to 2, 3 or 4 Hard disk would combine to a JBOD system.

HDD Population Rules for JBOD (Spanning)				
	Ultra ATA (Master)	Ultra ATA (Slave)	Serial ATA (Master 1)	Serial ATA (Master 2)
1	V	V	X	X
2	V	X	V	X
3	V	X	X	V
4	X	V	V	X
5	X	V	X	V
6	X	X	V	V
7	V	V	V	X
8	V	V	X	V
9	V	X	V	V

Serial ATA RAID Quick User's Guide

10	X	V	V	V
11	V	V	V	V

V = Install; X = Uninstall

NOTE: Storage Capacity: the number of hard drives times the capacity of the smallest drive in the disk array

Working Speed: the speed of the lowest drive in the disk array

Step 2. Installing Software Drivers

SiS provides Mini IDE driver for SiS964 SATA function and RAID driver for SiS964 SATA with RAID function.

SiS Mini IDE driver for Windows 2000/XP

SiS RAID driver for Windows 2000/XP

1. For SATA function, both of Mini IDE driver and RAID driver support SATA.
2. For RAID function, SiS964 support RAID0, RAID, RAID0+1 and JBOD by software RAID driver only.

For special occasions, users can refer to the following section with details on the SiS964 driver installation when used with various operating systems.

Windows 2000/XP

New Windows 2000/XP Installation

The following details the installation of the drivers while installing Windows 2000/XP.

1. Start the installation:
Boot from the CD-ROM. Press F6 when the message "Press **F6** key if you need to install third party SCSI or RAID driver" appears.
2. When the Windows 2000/XP Setup window is generated, press **S** key to specify an Additional Device(s).
3. Insert the driver diskette into drive A: and press Enter.
4. Choose one of the following items:
"WinXP SiS Raid/IDE Controller" (for RAID),
"WinXP SiS Mini IDE Controller" (for SATA),
"Win2000 SiS Raid/IDE Controller" (for RAID),
"Win2000 SiS Mini IDE Controller" (for SATA) that appears on screen, and then press the Enter key.

5. Press Enter to continue with installation or if you need to specify any additional devices to be installed, do so at this time. Once all devices are specified, Press Enter to continue with installation.
6. From the Windows 2000/XP Setup screen, press the Enter key. Setup will now load all device files and then continue the Windows 2000/XP installation.
7. Please install the driver package again (ex. SiS RAID driver v1.00) while the operation system has been setup.

Remark:

If you would like to install windows to any RAID set, you should create RAID from BIOS utility first and then follow the steps above.

Existing Windows 2000/XP Installation

1. Install the driver by execute SiS driver setup utility.
2. The drivers and WinXP RAID utility will be automatically installed.

Confirming Windows 2000/XP Driver Installation

1. From Windows 2000/XP, open the Control Panel from "My Computer" followed by the System icon.
2. Choose the "Hardware" tab, then click the "Device Manager" tab.
3. Click the "+" in front of "SCSI and RAID Controllers" hardware type. The driver "*WinXP SiS964 Raid Controller*" (for RAID) or "*Win2000/XP SiS964 IDE Controller*" (for SATA) should appear.

Step 3. BIOS Utility Operation (for RAID only)

Note: For the best performance and reliability, please read “Performance Hints and Recommend Setting” section in **Step 0**

1. Boot your system. If this is the first time you have booted with the SIS 964 and the drives installed, the onboard BIOS will display the following screen.

Silicon Integrated Systems Corp. RAID Card BIOS Setting Utility
1.00.0.XX
(c) 2003-2006 Silicon Integrated Systems Corp. All Rights Reserved.

Press <Ctrl><S> to run BIOS Setting Utility

2. Press <Ctrl-S> keys to display the SIS964 Utility Main Menu.
3. Press “R” to display the RAID setup menu below. This is the fastest and easiest method to creating your first array.

SIS RAID Card BIOS Setting Utility

Disk Status				
B : Select Boot Disk				
R : Enter Raid setup utility				
Q : Exit the menu				
Location	Model	Capacity	Mode	RAID Type
Pri_Master	WDC AC310200R	9787MB	UDMA 4	Single*
Pri_Slave	QUANTUM FIREBALL	9787MB	UDMA 4	Single
Sec_Master	Maxtor 6Y060M0	58644MB	UDMA 6	Single
Sec_Slave	ST3120023AS	114473MB	UDMA 6	Single

Copyright (c) 2003-2005. Silicon Integrated Systems Corp | www.sis.com

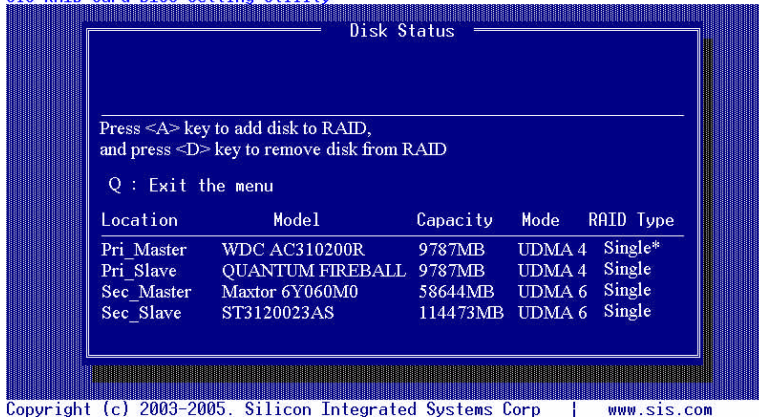
Creating an Array for Performance

NOTE: SIS 964 enables users to create striped arrays with 1, 2, 3, or 4 drives.

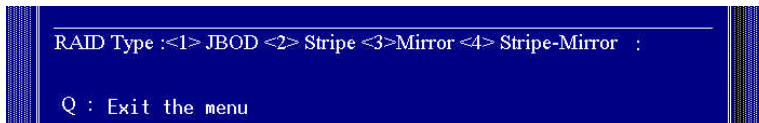
To create an array for best performance, follow these steps:

1. Press "A" to create array .

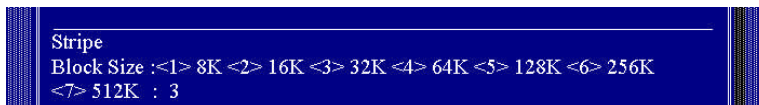
SIS RAID Card BIOS Setting Utility



2. Press <2> and <Enter> to select Stripe .



3. Press <1> <7> keys and <Enter> to select Block Size. (Default : 32K)



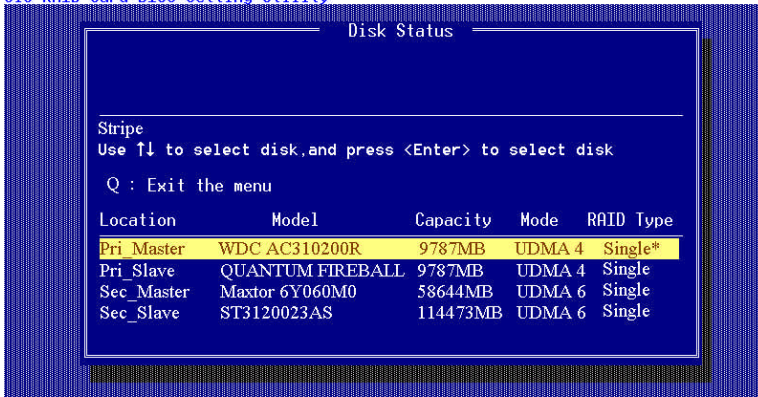
4. Press <1> <2> keys and <Enter> to select Transfer Mode. (Default : DMA)



5. Use < > < > to select disk , and press <Enter> to select disk, <Q> to exit.

Serial ATA RAID Quick User's Guide

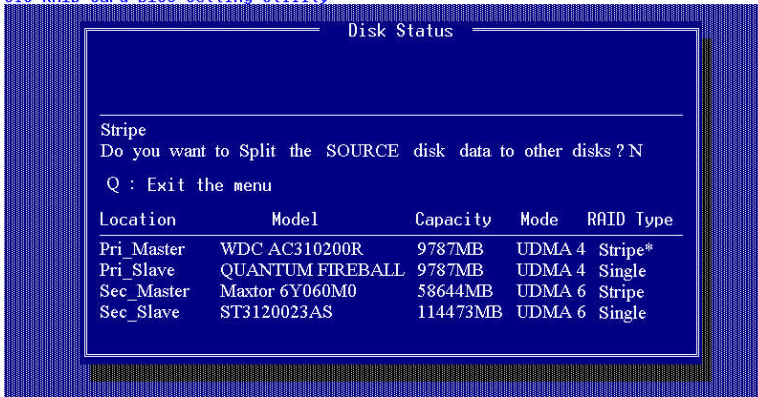
SIS RAID Card BIOS Setting Utility



Copyright (c) 2003-2005. Silicon Integrated Systems Corp | www.sis.com

6. Press <N> and <Enter> to Create Stripe only. (If Press <Y> and <Enter>, it will split the data on source disk to other disks)

SIS RAID Card BIOS Setting Utility

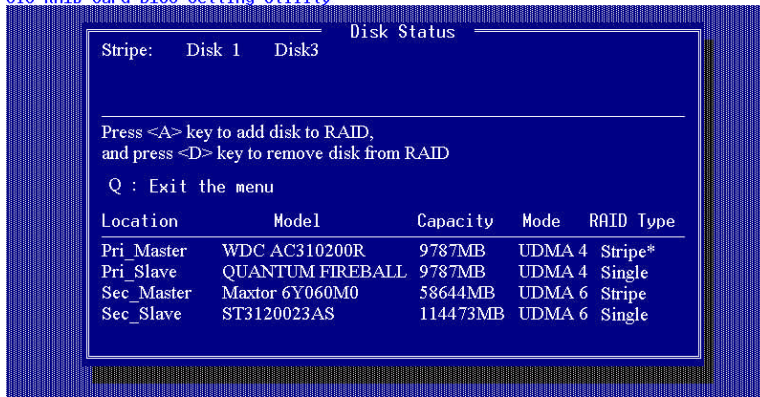


Copyright (c) 2003-2005. Silicon Integrated Systems Corp | www.sis.com

7. Press <Q> until escape the setup menu

Serial ATA RAID Quick User's Guide

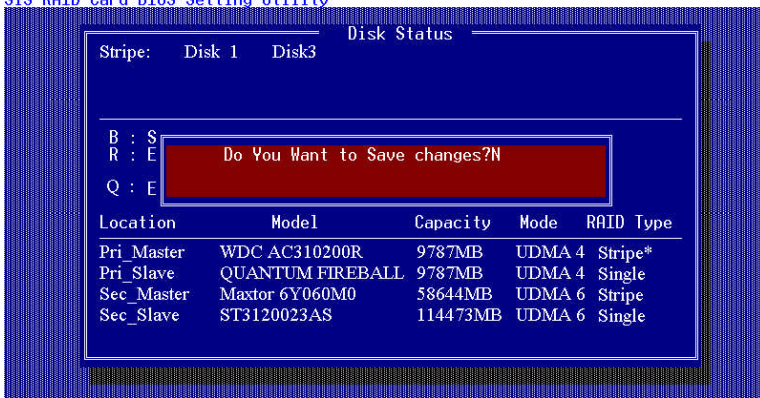
SIS RAID Card BIOS Setting Utility



Copyright (c) 2003-2005. Silicon Integrated Systems Corp | www.sis.com

8. Press <Y> and <Enter> to save changes.

SIS RAID Card BIOS Setting Utility



Copyright (c) 2003-2005. Silicon Integrated Systems Corp | www.sis.com

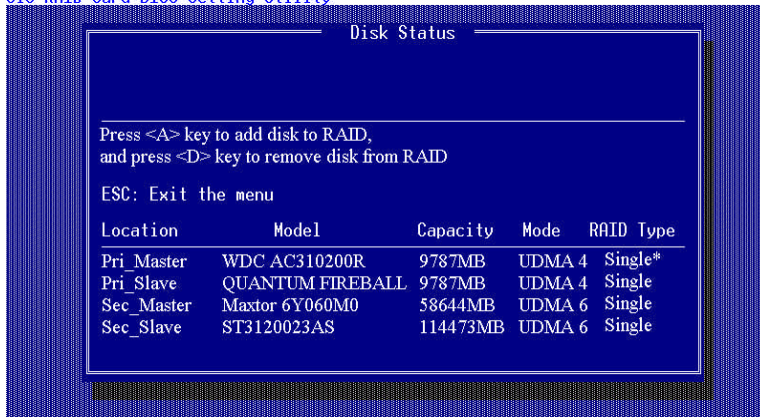
9. Once the array has been created, you will need to FDISK and format the array as if it were a new single hard drive.

Creating a Mirror Array

To create an Mirror array , follow these steps:

1. Press "A" to create array .

SIS RAID Card BIOS Setting Utility

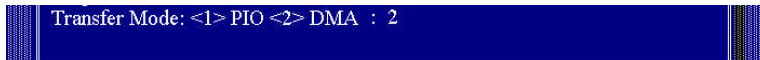


Copyright (c) 2003-2005. Silicon Integrated Systems Corp | www.sis.com

2. Press <3> and <Enter> to select Mirror.



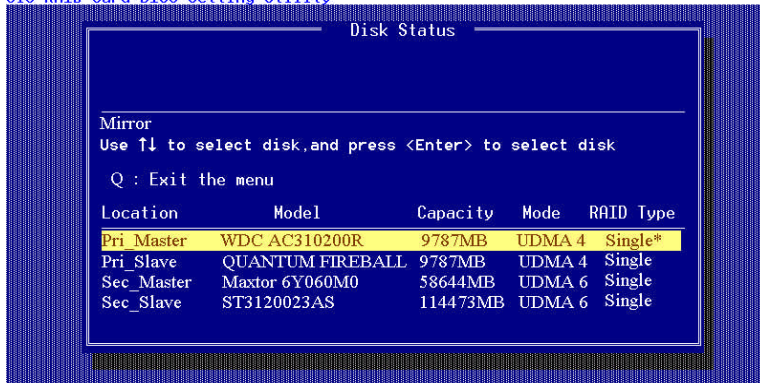
3. Press <1> <2> keys and <Enter> to select Transfer Mode. (Default : DMA)



4. Use< > < > to select disk , and press <Enter> to select disk, <Q> to exit.

Serial ATA RAID Quick User's Guide

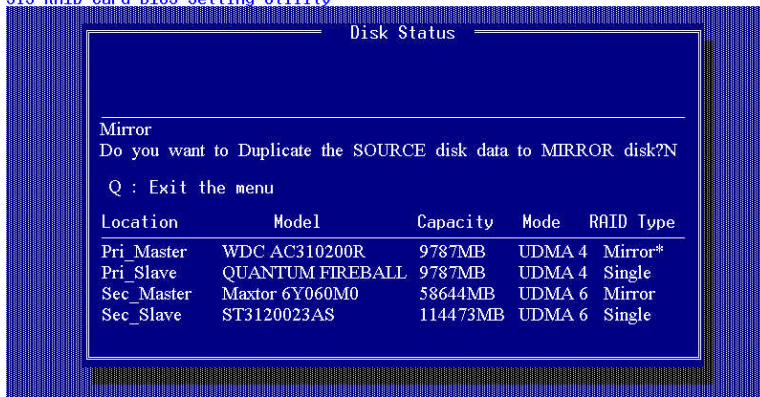
SIS RAID Card BIOS Setting Utility



Copyright (c) 2003-2005, Silicon Integrated Systems Corp | www.sis.com

5. Press <N> and <Enter> to Create Mirror only. (If Press <Y> and <Enter>, it will Duplicate the data on source disk to mirror disk)

SIS RAID Card BIOS Setting Utility

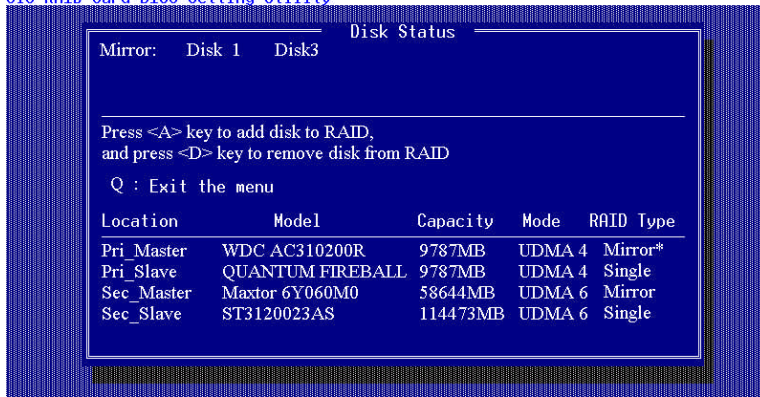


Copyright (c) 2003-2005, Silicon Integrated Systems Corp | www.sis.com

6. Press <Q> until escape the setup menu

Serial ATA RAID Quick User's Guide

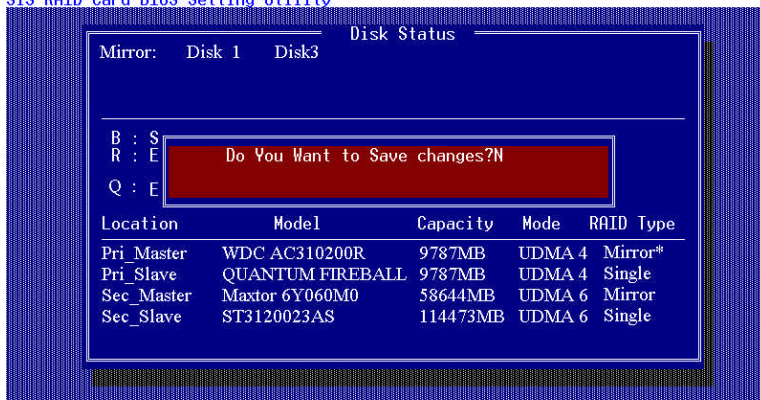
SIS RAID Card BIOS Setting Utility



Copyright (c) 2003-2005. Silicon Integrated Systems Corp | www.sis.com

7. Press <Y> and <Enter> to save changes.

SIS RAID Card BIOS Setting Utility



Copyright (c) 2003-2005. Silicon Integrated Systems Corp | www.sis.com

8. Once the array has been created, you will need to FDISK and format the array as if it were a new single hard drive.

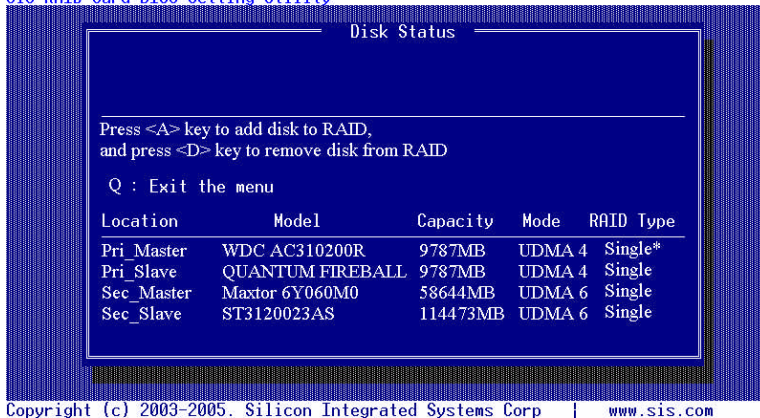
Creating a JBOD Array

To create an JBOD array, follow these steps:

1. Press "A" to create array.

Serial ATA RAID Quick User's Guide

SIS RAID Card BIOS Setting Utility



- Press <1> and <Enter> to select JBOD.

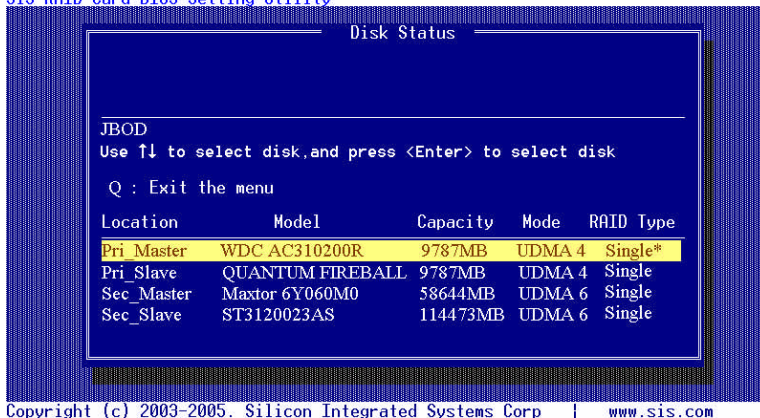


- Press <1> <2> keys and <Enter> to select Transfer Mode. (Default : DMA)



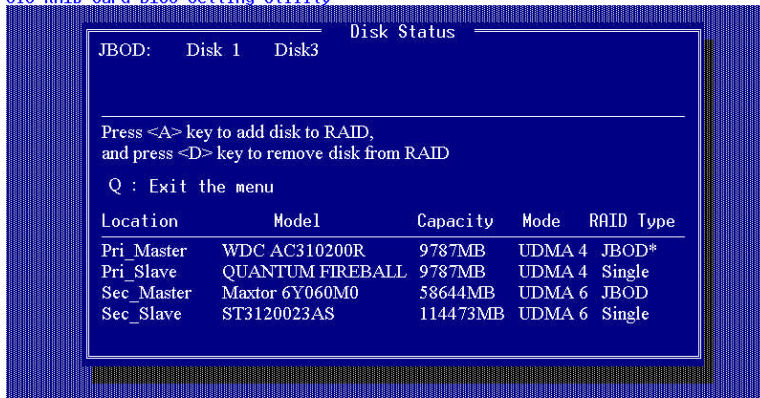
- Use < > < > to select disk , and press <Enter> to select disk , <Q> to exit.

SIS RAID Card BIOS Setting Utility



5. Press <Q> until escape the setup menu

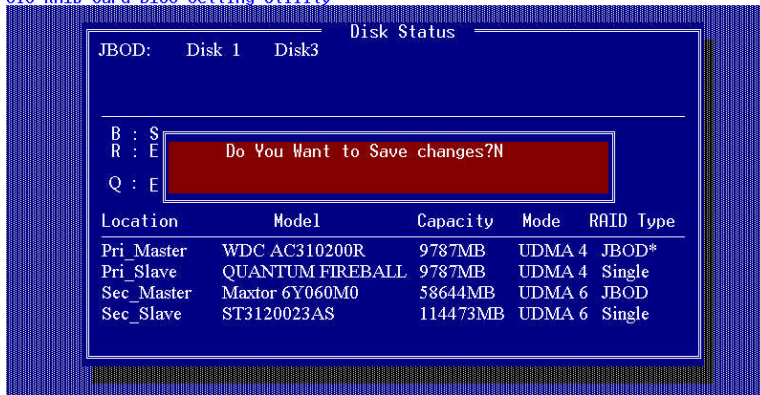
SiS RAID Card BIOS Setting Utility



Copyright (c) 2003-2005. Silicon Integrated Systems Corp | www.sis.com

6. Press <Y> and <Enter> to save changes.

SiS RAID Card BIOS Setting Utility



Copyright (c) 2003-2005. Silicon Integrated Systems Corp | www.sis.com

7. Once the array has been created, you will need to FDISK and format the array as if it were a new single hard drive.

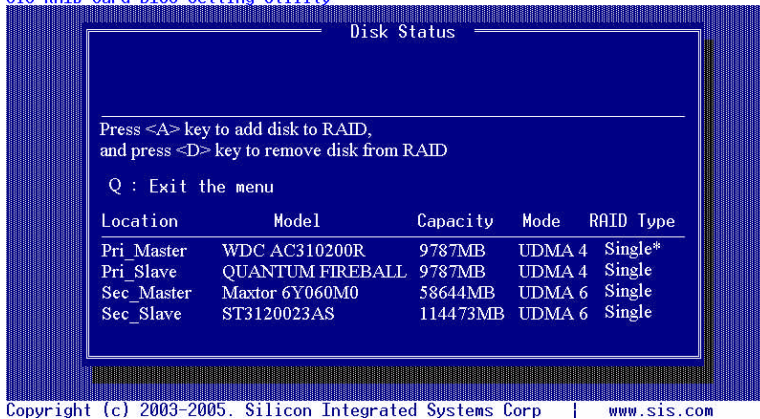
Creating a Stripe-Mirror Array

To create an Stripe-Mirror array, follow these steps:

1. Press "A" to create array.

Serial ATA RAID Quick User's Guide

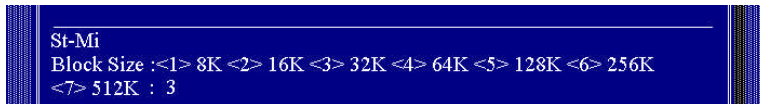
SIS RAID Card BIOS Setting Utility



2. Press <4> and <Enter> to select Strpie-Mirror.



3. Press <1> <7> keys and <Enter> to select Block Size. (Default : 32K)



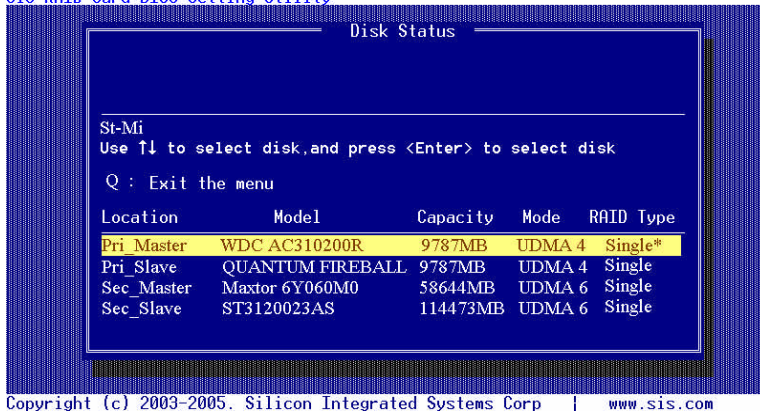
4. Press <1> <2> keys and <Enter> to select Transfer Mode. (Default : DMA)



5. Use< > < > to select disk , and press <Enter> to select disk, <Q> to exit.

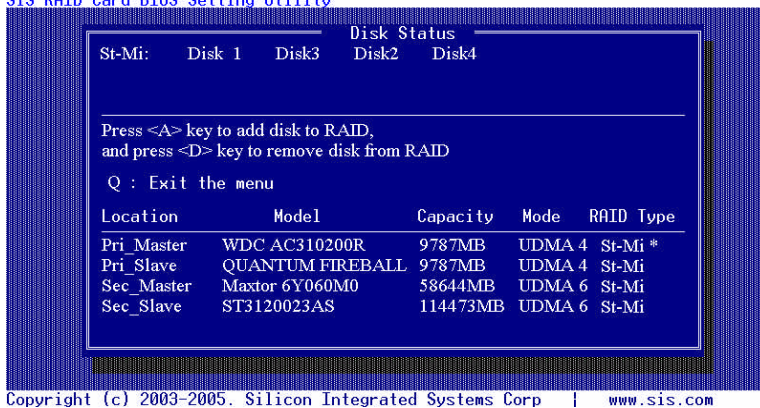
Serial ATA RAID Quick User's Guide

SiS RAID Card BIOS Setting Utility



6. Press <Q> until escape the setup menu

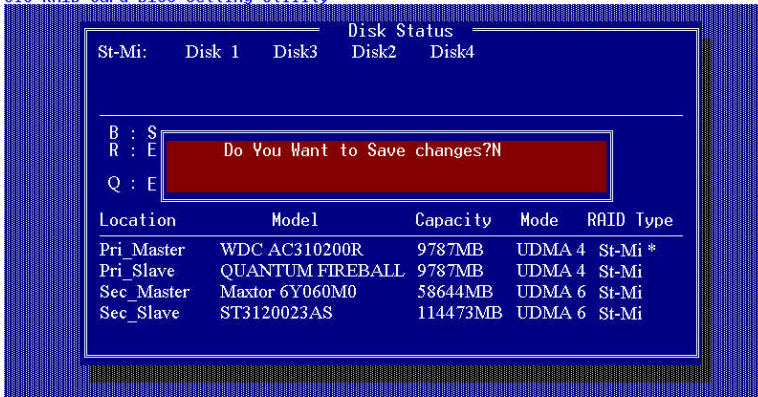
SiS RAID Card BIOS Setting Utility



7. Press <Y> and <Enter> to save changes.

Serial ATA RAID Quick User's Guide

SIS RAID Card BIOS Setting Utility



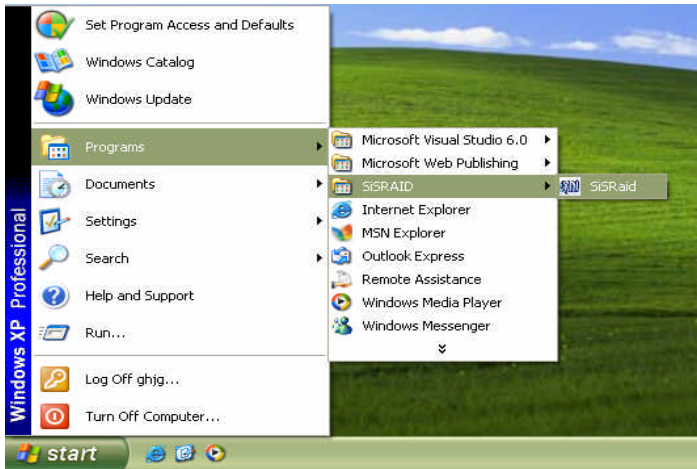
Copyright (c) 2003-2005, Silicon Integrated Systems Corp | www.sis.com

8. Once the array has been created, you will need to FDISK and format the array as if it were a new single hard drive.

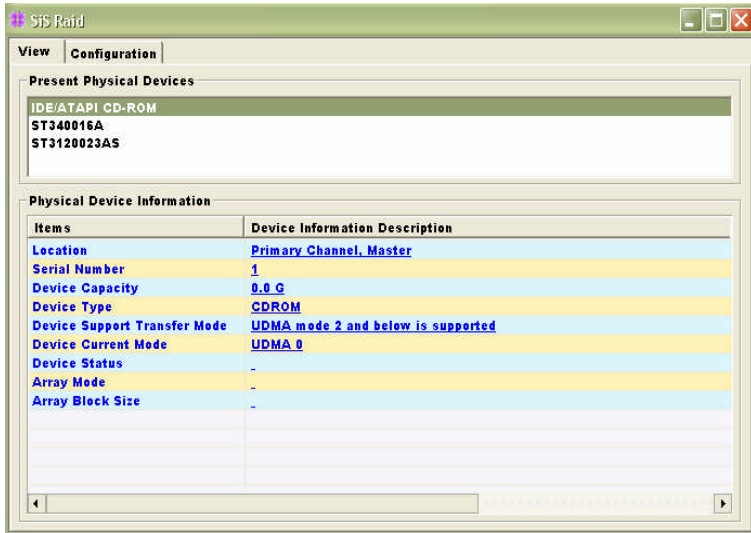
Step 4. SIS 964 RAID Utility Operation

Note: For the best performance and reliability, please read “Performance Hints and Recommend Setting” section in **Step 0**.

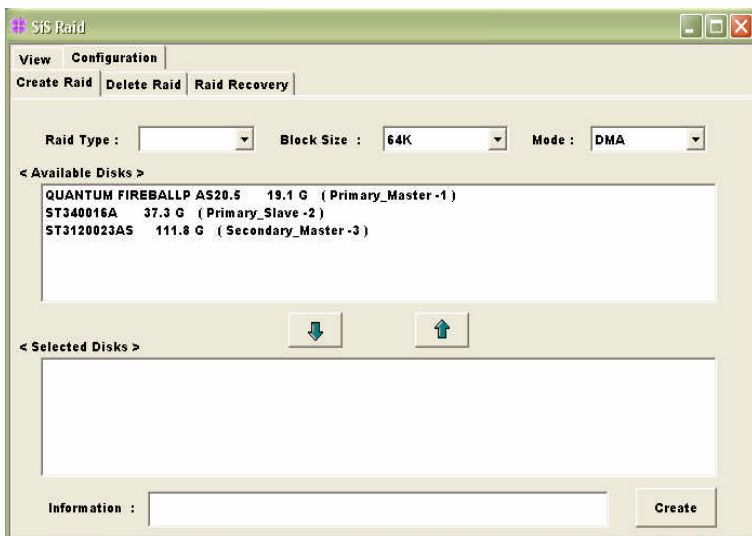
- 1) After installing the SiS RAID utility, go to “Start” menu and choose “Programs.” From the “Programs” menu, choose “SiS RAID Utility” and click on “SiSRaid”



- 2) The SiS RAID Utility window opens as below. The main interface has two tabs: View and Configuration. You can switch to different tabs by clicking on it. On “View” tab, we can see some device information. The default value is the information of the first device.



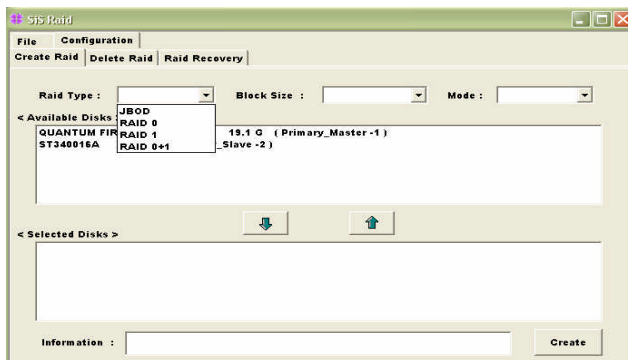
- 3) Click the tab "configuration", you can find three tabs: Create Raid, Delete Raid and Raid Recovery. In the same way, you can switch to different tabs by clicking on it.



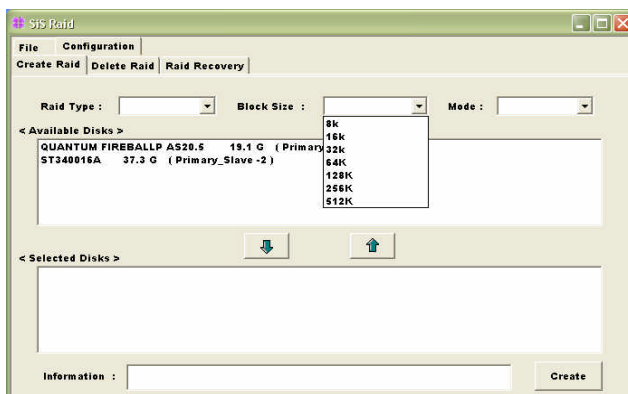
- 4) Click the tab "Create Raid", you can find three drop-down box and three panes. Those meaning will be showing below.

Viewing the "Create Raid"

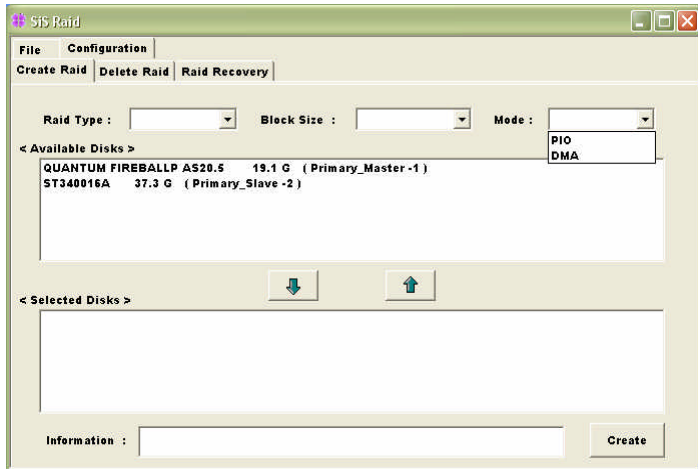
- a) **Raid Type:** Click the drop-down box "Raid Type". This box enables the user to select array type. There are four array types that the user can select: JBOD, RAID 0, RAID 1 and RAID 0+1. User can select any one array type to create a RAID set.



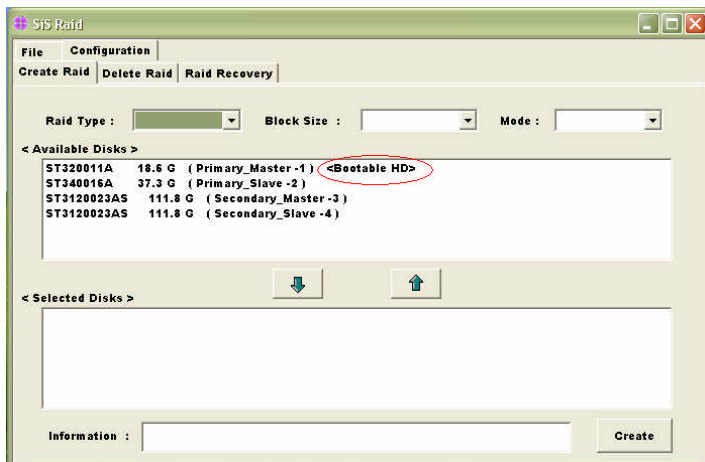
- b) **Block Size:** If user selected RAID 0 and RAID 0+1 array types in the "Array Type" box, the "Block Size" drop-down box will be enabled and user must select a block size. Clicking the drop-down box "Block Size", there are seven block size that the user can select: 8k, 16k, 32k, 64k, 128k, 256k and 512k. User can select any one block size to create a RAID 0 or RAID 0+1 set. The default selection is 64k.



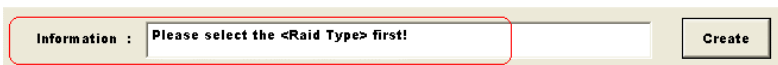
- c) Mode Type: Click the drop-down box "Mode Type". This box enables the user to select mode type. There are two mode types that the user can select: PIO and DMA. User can select any one mode type to create a RAID set. The default selection is DMA.



- d) Available Disks: This pane will list out all the disks that can be used to create a RAID set currently. It will show some disk information (ex. Location, serial numbers, the ability of boot and the status of recovering).

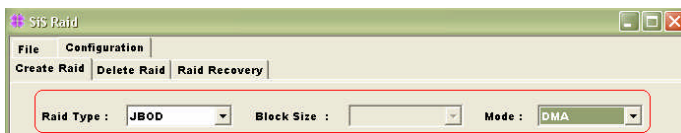


- e) **Selected Disks:** This pane will list out all the disks that have been selected to create a RAID set. User can highlight the specific disk that we wants in the “Available Disks” pane and click the downward arrow icon or double click the marked disk to select that disk into the “Selected Disks” pane. In the same way, user can click the upward arrow icon or double click the marked disk in the “Selected Disks” to get back the disk that we might select wrong to the “Available Disks” pane.
- f) **Information:** This pane will show the information about creating a RAID set after clicking the button “Create”. The information may be “Please select the <Raid Type> first!”, “Please select the <Mode Type> first!”, “Please select the <Block Size> first!”, “Please select the disk you want first!”, “Mirror supports TWO DISKS only.”, “StripeMirror needs least FOUR DISKS.”, “Raid Created successful! Reboot please!!” or “Raid Creation failed!”.

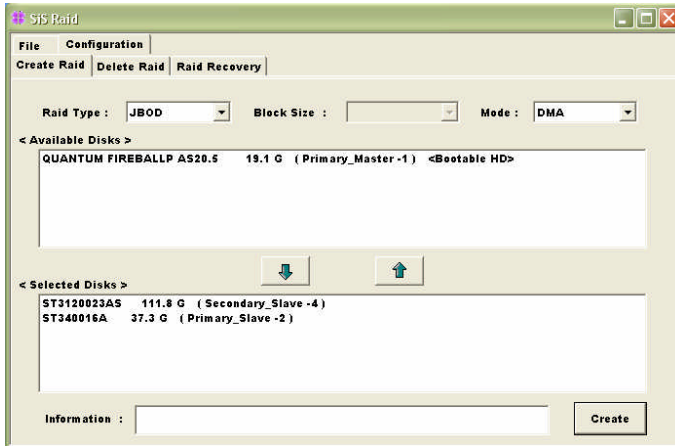


Create a RAID set

- a) To create a JBOD array, follow these steps:
1. “Configuration” “Create Raid” “Raid Type” JBOD.
 2. From the drop-down box “Mode Type”, select the mode type you want.

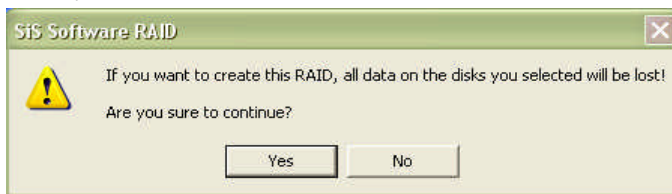


3. From the “Available Disks” pane, select the disk and click downward arrow icon or double click it to add the disk on the “Selected Disks” pane.

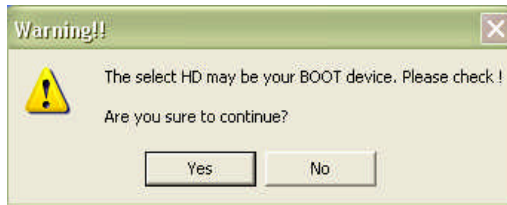


NOTE: You must have at least two hard disks to create a JBOD array.

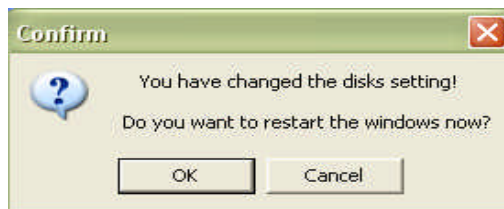
4. When the JBOD array's configuration is finished, click the button "Create". Then a warning message will be popup. Pay attention to the warning message, and then click "Yes" button to finish the creation of JBOD array, or click "No" button to cancel.



NOTE: If the disk you selected has the ability of booting, another warning message will be popup before "SiS Software RAID" message. You can click "Yes" button to continue or click "No" button to cancel.

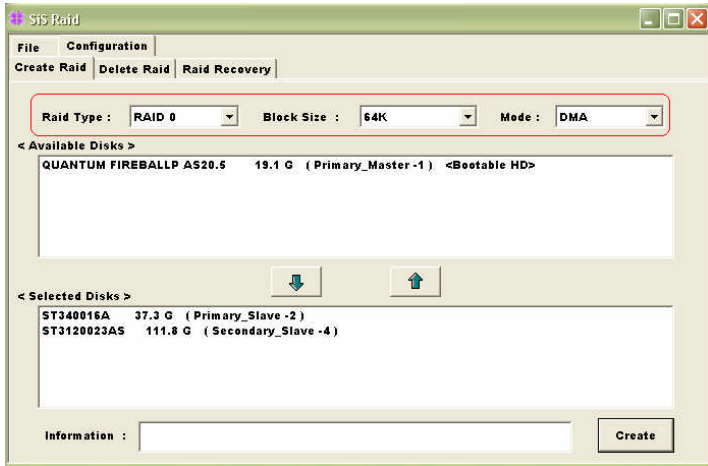


-
5. Next, another message box will be popup to tell user that disk setting has been changed and ask whether to restart the computer or not. Click "Yes" button to restart the computer or click "Cancel" button to skip restarting.



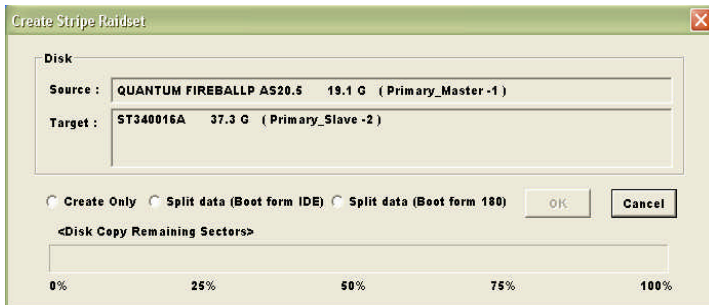
NOTE: *New Setting will take effect after restarting only.*

- b) To create a RAID 0 (Stripe) array, follow these steps:
1. "Configuration" "Create Raid" "Raid Type" RAID 0.
 2. From the drop-down box "Block Size", select the block size you want.
 3. From the drop-down box "Mode Type", select the mode type you want.
 4. From the "Available Disks" pane, select the disk and click downward arrow icon or double click it to add the disk on the "Selected Disks" pane.



NOTE: You must have at least two hard disks to create a RAID0 array.

5. When the RAID0 array's configuration is finished, click the button "Create". Then a "Create Stripe RaidSet" dialog will be popup.



<Note>

Source: The first selected disk.

Target: All other disks but first one.

Create Only: This operation will destroy all data on all the selected disks and create a clean stripe array without any data on it.

Split data (Boot from IDE): Split operation will split data from source disk into all the selected disks. In this

operation, the boot disk can't be placed on 964.

Split data (Boot from 964): This operation is similar to "Split data into Raid0" operation, but system boots from 964.

Ok: Start the operation.

Cancel: Cancel the operation.

<Disk Copy Remaining Sector>: Show the remaining splitting data.

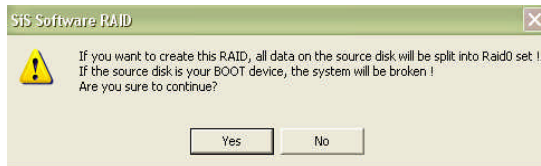
NOTE: $miniCapacity \times N > SourceCapacity$

miniCapacity: The minimum size of all selected disks.

SourceCapacity: The size of source disk.

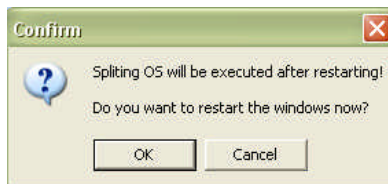
N: Total disk numbers.

- Next, you can click "Cancel" button to leave or click "Ok" button to continue after the operation being selected. The differential warning messages will be popup following the differential operations. The warning messages are similar to JBOD array creation but the operation is "Split data into Raid0".
- If the operation is "Split data into Raid0", a warning message will be popup, seeing below:



Next, you can click "Yes" button to start the operation or click "No" button to cancel.

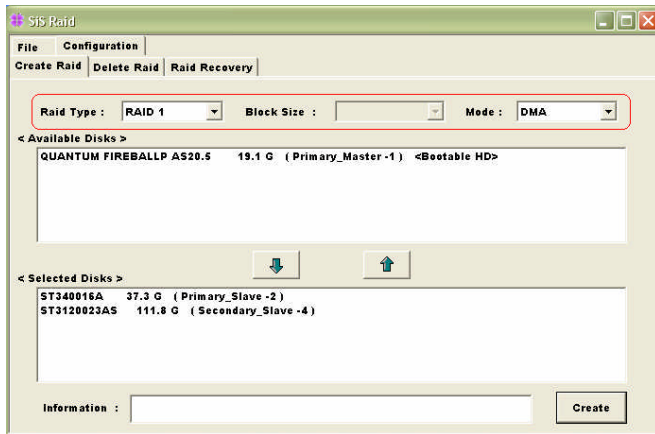
- When the operation is finished, the restart warning message will be popup as well as JBOD array creation except for the operation "Split boot OS into Raid0".



Next, you can click “Ok” button to restart the windows and start the operation “Split boot OS into Raid0”. Or click “Cancel” button to suspend this operation. But, this operation is still done after restarting the windows next time.

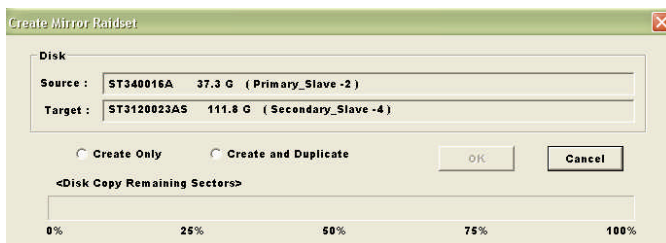
c) To create a RAID 1 (Mirror) array, follow these steps:

1. “Configuration” “Create Raid” “Raid Type” RAID 1.
2. From the drop-down box “Mode Type”, select the mode type you want.
3. From the “Available Disks” pane, select the disk and click downward arrow icon or double click it to add the disk on the “Selected Disks” pane.



NOTE: The RAID1 array supports two hard disks only.

4. When the RAID1 array's configuration is finished, click the button “Create”. Then a “Create Mirror RaidSet” dialog will be popup.



<Note>

Source: The first selected disk.

Target: The second selected disk.

Create Only: This operation will destroy all data on all the selected disks and create a clean mirror array without any data on it.

Create and Duplicate: Duplicate operation will reserve data on the source disk and copy them onto the target disk.

Ok: Start the operation.

Cancel: Cancel the operation.

<Disk Copy Remaining Sector>: Show the remaining copying data.

5. Next, you can click "Cancel" button to leave or click "Ok" button to continue after the operation being selected. The warning messages will be popup following the differential operations and the message is similar to JBOD array creation.
6. When the operation is finished, the restart warning message will be popup as well as JBOD array creation.

d) To create a RAID 0+1 (StripeMirror) array, follow these steps:

1. "Configuration" "Create Raid" "Raid Type" RAID 0+1.
2. From the drop-down box "Block Size", select the block size you want.
3. From the drop-down box "Mode Type", select the mode type you want.
4. From the "Available Disks" pane, select the disk and click downward arrow icon or double click it to add the disk on the "Selected Disks" pane. Please see the "Performance hints and recommend setting" section for best settings.
5. When the RAID0+1 array's configuration is finished, click the button

"Create". Then a warning message will be popup. The message is similar to JBOD array creation.

6. Next, the restart message will be popup.

NOTE: The RAID0+1 array support at least four hard disks.

- 5) Click the tab "Delete Raid", you can find some panes and two buttons. The RaidType meaning will show below.

Viewing the RaidType meaning

General case: RAID0 (A = B C | D E)

<Meaning>

RAID0: Raid Type

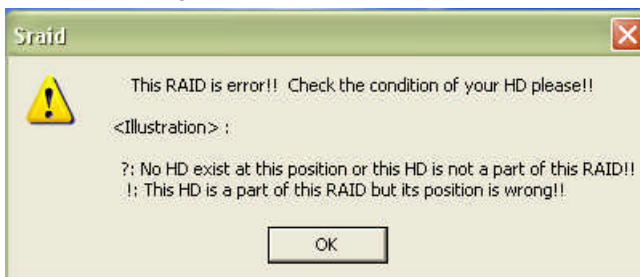
A: total number of disks in this Raid

B,C: the serial number of each disk in this Raid

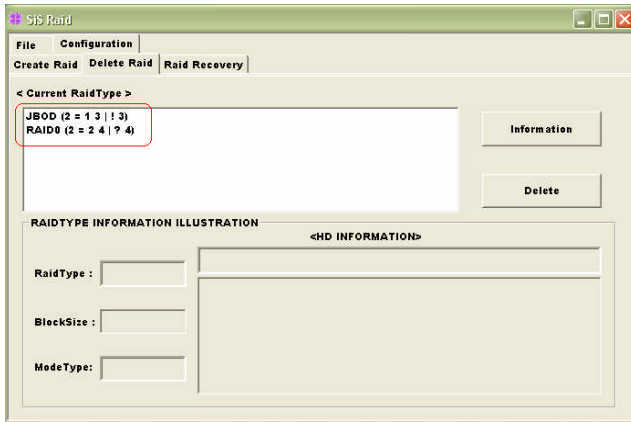
D,E: a) Raid is correct, B=D C=E

b) Raid is error, D or E will show "?" or "!".

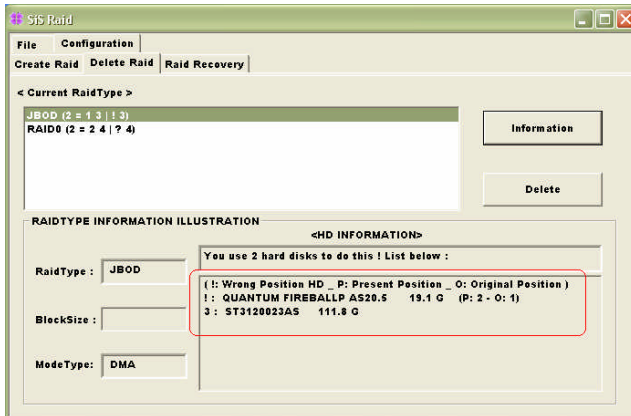
In which, the meaning of "?" and "!" will show below.



<Example>



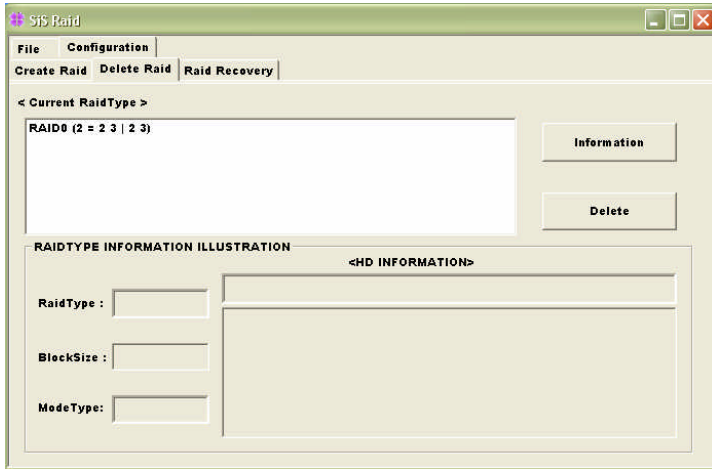
<Showing its information>



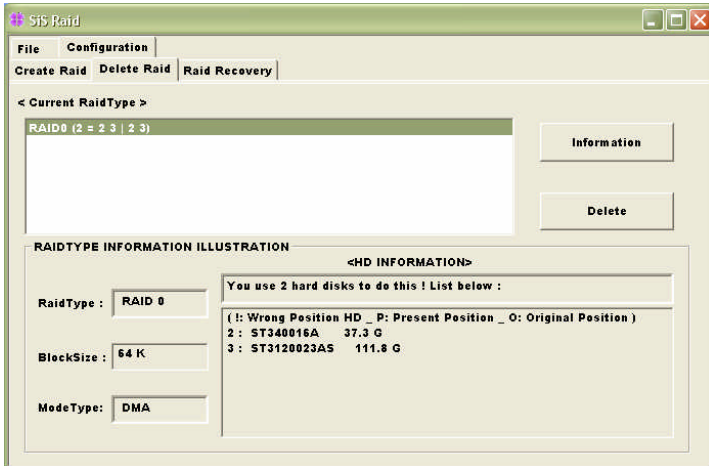
Delete a Raid set

a) To delete a JBOD, RAID0 or RAID1 array, follow these steps:

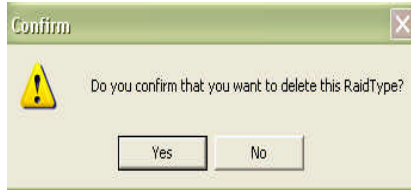
1. "Configuration" "Delete Raid", the following windows will appear:



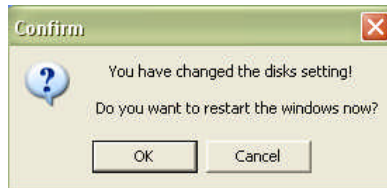
2. Highlight the disk array in the "Current RaidType" pane, and then click the "Information" button or double click the array. You can get some information about the disk array.



3. If you want to delete a disk array you selected, you can highlight the disk array and then click the button "Delete". Then a warning message will be popup, and pay attention to the warning message. You can click "Yes" to delete the selected disk array or click "No" to cancel.

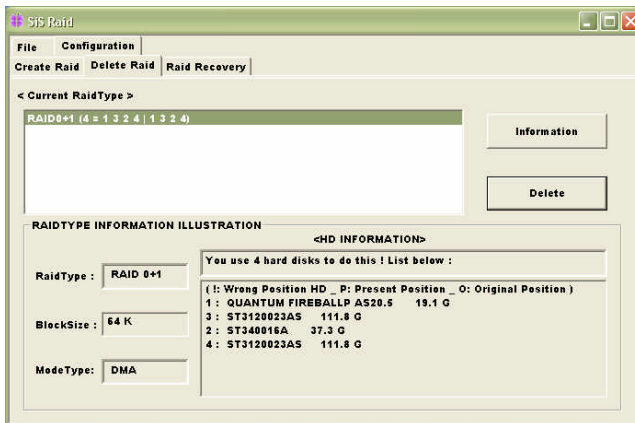


4. Next, another message will be popup to tell user the setting of these disks have been changed and ask whether to restart the computer.



b) To delete a RAID0+1 array, , follow these steps:

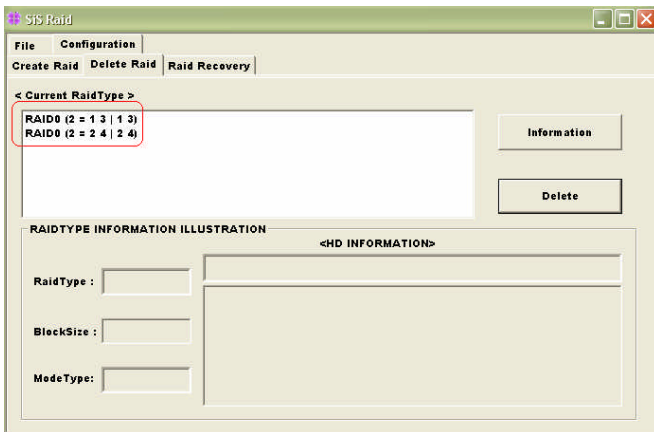
1. "Configuration" "Delete Raid", highlight the disk array in the "Current RaidType" pane, and then click the "Information" button or double click the array. You can get some information about the disk array. The following windows will appear:



2. If you want to delete a disk array you selected, you can highlight the disk array and then click the button "Delete". Then a warning message will be popup, and pay attention to the warning message.



3. Next, you can click the button "Delete" to delete this RAID0+1 array and all disk will become single disk. Then some warning messages which are the same with previous those will be popup.
4. Or, you can click the button "Degrade" to degrade RAID0+1 set to become a completed RAID0 set. See below:



NOTE: The degrading operation is workable only when the RAID 0+1 set has any one completed RAID 0 set existed.

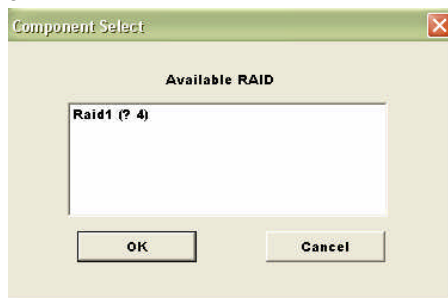
- 6) Click the tab “Raid Recovery”, you can find two panes and some buttons. Those meaning will be showing below.



Raid Recovery Operation

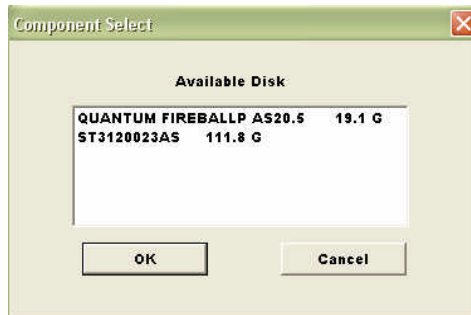
NOTE: The recovering operation is workable only when error RAID1 set or error RAID0+1 set (must at least an error RAID0 set) exist.

- a) First, you can click the button “Available Raid” to find whether any error Raid set existing. See below:



Next, highlight the error Raid set you want to recovery. And you can click the button “Ok” to continue or click “Cancel” to cancel this operation.

- b) After “Available RAID” selected, click the button “Available Disk” to find whether any empty hard disk existing. See below:



Next, highlight the empty hard disk you want to select. And you can click the button “Ok” to continue or click “Cancel” to give up this selection.

- c) When the “Available Raid” and “Available Disk” is finished, you can click the button “Start” to start this operation. And the button “Start” will become “Pause”. Then you can click the button “Pause” to pause the thread operation. And the button “Pause” will become “Start”. Or you can click the button “Stop” to cancel this operation.

