

GK-K8000

GHOST™ Series

USER'S MANUAL

Rev. 101

12MD-K8000-101R

Copyright

© 2008 GIGA-BYTE TECHNOLOGY CO., LTD. All rights reserved.

The trademarks mentioned in the manual are legally registered to their respective companies.

Notice

The written content provided with this product is the property of Gigabyte.

No part of this manual may be reproduced, copied, translated, or transmitted in any form or by any means without Gigabyte's prior written permission. Specifications and features are subject to change without prior notice.

For more product details, please visit Gigabyte's website at www.gigabyte.com.tw



The WEEE marking on the product indicates this product must not be disposed of with user's other household waste and must be handed over to a designated collection point for the recycling of waste electrical and electronic equipment!

The WEEE marking applies only in European Union's member states.

Index

1.	Introduction	4
1-1	Worldwide 1st Mechanical Gaming Keyboard Overview	
1-2	Features	4
1-3	System Requirements	4
1-4	Package Content	5
1-5	Package Instruction	5
1-5-1	Detachable Wrist Rest instruction	5
1-5-2	Change New Keycap	5
2	Hardware Installation	6
2-1	Keyboard overview	6
2-2	Hardware Installation	6
3	Software Installation	7
3-1	GHOST™ Engine utility installation	7
3-2	Upgrade Firmware Tool	7
4	Software Setting	8
4-1	GHOST™ Engine Introduction	8
4-2	GHOST™ Engine function introduction	9
4-2-1	Mouse Setting	10
4-2-2	Keyboard Setting	10
4-2-3	Macro Setting	11
4-2-4	Interrupt Key	12
4-2-5	Launch APP	12
4-2-6	Cancel Setting	12
5	Updating Software	13

1. Introduction

1-1 Worldwide 1st Mechanical Gaming Keyboard Overview

The GIGABYTE GK-K8000 is especially designed by engineers and designers who love RTS and FPS games, setting new industry standard for gaming keyboard. Thousands of gamers have been studied; for example, their play style and practical functions their keyboard provided. Thousand hours of study have culminated in the GIGABYTE's mechanical keyboard, GK-K8000. To pursue the best quality gaming gear, GIGABYTE boasts its mechanical tactile system, featuring no-click Cherry MX-linear Series key switches to guarantee a life cycle of up to 60 million keystrokes. In addition to the hardware design, we also provide the best gaming software, GIGABYTE GHOST™ Engine, to remember macro and also include several pre-set gaming profiles for FPS, RTS, and RPG games.

With GHOST™ Engine integrating capability, your GK-K8000 will remember up to 13 Onboard Macro settings without the need to install software drivers on each computer. There are a total of 100 customizable Profiles available. Especially, GIGABYTE GK-K8000 boasts Super-switch mode for profile switching while gamers need real-time switch in game. For Super 1-3 and Profile 1-10, all settings will be saved on any of these profiles you have currently selected and be available on another computer even without the driver installation. For Profile 11-100, settings are available only upon driver installation and will be accessible only on the local PC.

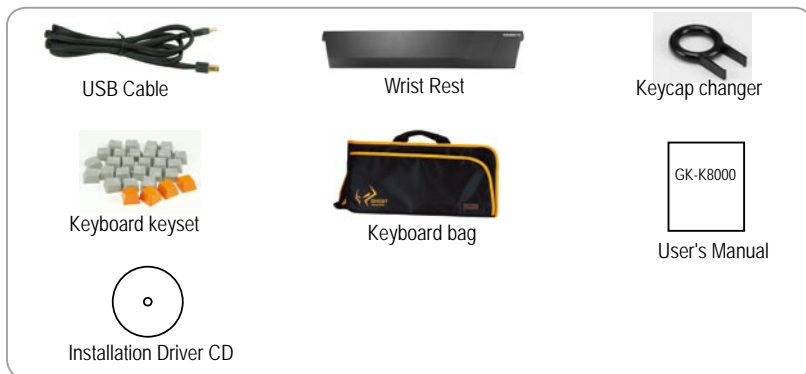
1-2 Features

1. Worldwide 1st Mechanical Gaming Keyboard
2. Features gaming grade Cherry MX series key switch
3. Supports up to 103 customizable profiles (13 onboard) with macro editing
4. Professional GHOST™ software suite included
5. USB audio in/out for quality sound
6. Multi media control Hot-keys
7. Self-standing Mechanism Design wrist rest (patent pending)

1-3 System Requirements

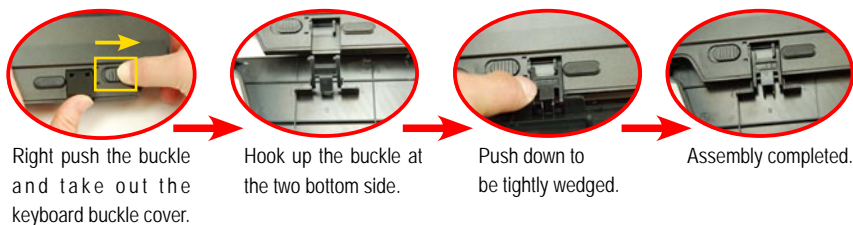
1. CD-ROM or DVD-ROM player
2. One (or above) USB2.0 port
3. 100 MB or larger hard disc space for installation
4. Windows® XP / Vista

1-4 Package Content



1-5 Package Instruction

1-5-1 Detachable Wrist Rest instruction



GIGABYTE patent wrist rest characterizes ergonomics, easy storage while self-standing, and detachable.

1-5-2 Change New Keycap



DO NOT insert too hard down below keycap so it would possible broken the key-opener.

2 Hardware Installation

2-1 Keyboard overview



2-2 Hardware Installation

Step 1: Plug USB-B connector into GK-K8000 USB port

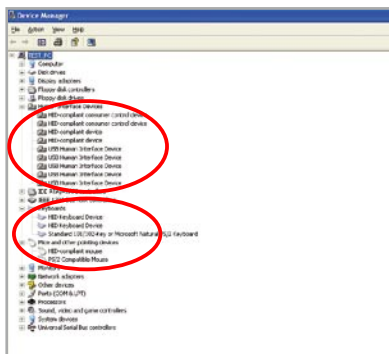


USB cable

Step 2: Plug USB-A connector into either desktop or laptop's USB port



Step 3: Open "Control Panel" -> "System"-> "Hardware"-> "Devices Manager" and confirm the keyboard is working properly.



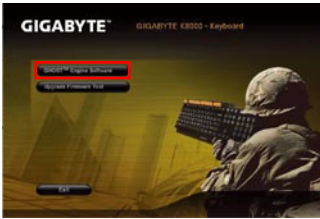
3 Software Installation

In this manual, we assume that your CD-ROM Drive letter to be Drive D:

When you insert the driver CD into your CD-ROM drive, you can see the AUTORUN window (if it does not show up, run "D:\setup.exe").

3-1 GHOST™ Engine utility installation

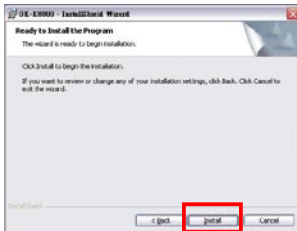
Step 1. Click the "GHOST™ Engine Software" button.



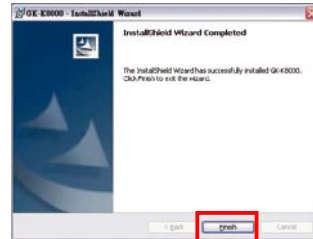
Step 2. Click the "Next" button.



Step 3. Click "Install" to begin the installation.

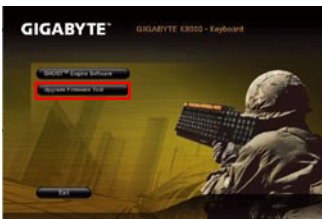


Step 4. Click "Finish" to exit the wizard.

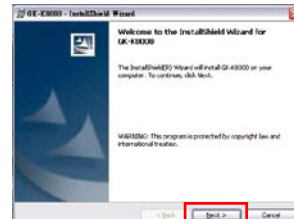


3-2 Upgrade Firmware Tool

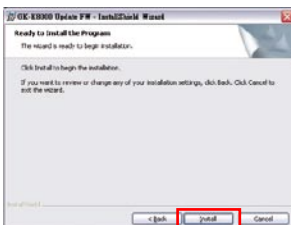
Step 1. Click the "Upgrade Firmware Tool" button.



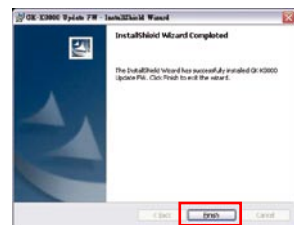
Step 2. Click the "Next" button.



Step 3. Click "Install" to begin the installation.



Step 4. Click "Finish" to exit.



4 Software Setting

Macro Editing

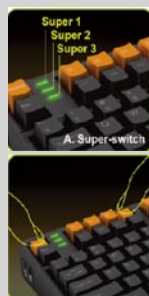
With GHOST™ Engine integrating capability, your GK-K8000 will remember up to 13 Onboard Macro settings without the need to install software drivers on each computer. There are a total of 100 customizable Profiles available. Especially, GIGABYTE GK-K8000 boasts Super-switch mode for profile switching while gamers need real-time switch in game. For Super 1-3 and Profile 1-10, all settings will be saved on any of these profiles you have currently selected and be available on another computer even without the driver installation. For Profile 11-100, settings are available only upon driver installation and will be accessible only on the local PC.



Switching Profiles

GIGABYTE GK-K8000 allows gamers to switch between the Profiles in 3 ways:

1. Super-switch:
By pressing Profiles button, one stroke means Super 1; second stroke indicate Super 2. If you press 3 times contiguously, macro settings may be assigned to Super 3.
2. Quick-switch:
For example, to select Profile 4, hold on 'Profile' while all profile status LEDs keep flashing and press 'G4' before it stops flashing.
3. Software-switch:
By selecting a Profile in GHOST™ gaming utility.

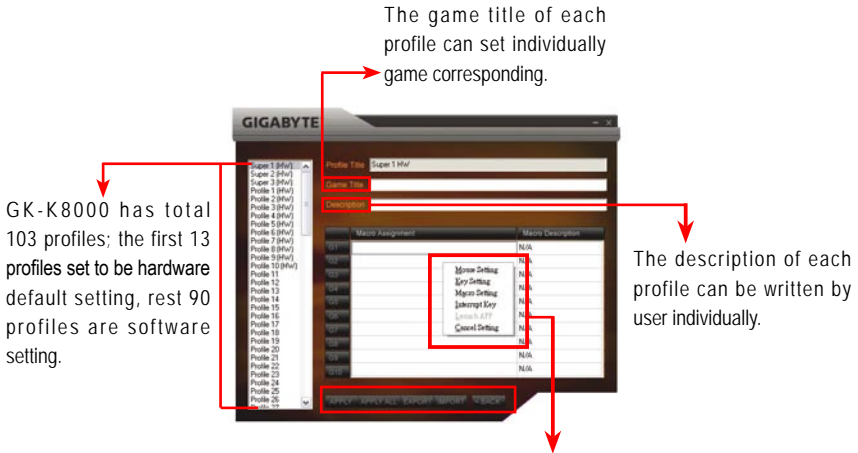


4-1 GHOST™ Engine Introduction

Press "Profile" or any G1~G10 keys, then will shown all setup item.



Orange : Quick lanch for Ghost™ Engine software.
Normal : Application key.



While right click the mouse including:

- | | |
|--------------------|--|
| (1) Mouse setting | Set function to be single mouse click |
| (2) Key setting | Set function to be single key click |
| (3) Marco setting | Set function to be Marco setting |
| (4) Interrupt key | Set function to be interrupt hot key |
| (5) Launch APP | Set function to be quick launch program hot key
(only profile 11-100 support) |
| (6) Cancel Setting | Cancel setting |

Buttom introduction:

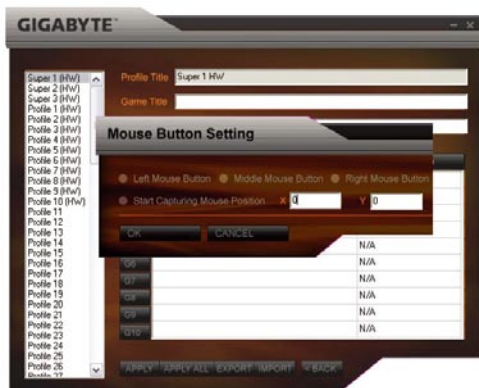
- | | |
|-----------|-------------------------|
| APPLY | Apply current profile |
| APPLY ALL | Apply all profile |
| EXPORT | Export all profile data |
| IMPORT | Import all profile data |
| BACK | Back to Main |

4-2 GHOST™ Engine function introduction

4-2-1 Mouse Setting

You can select a "G" key to be single mouse click , and set mouse position.

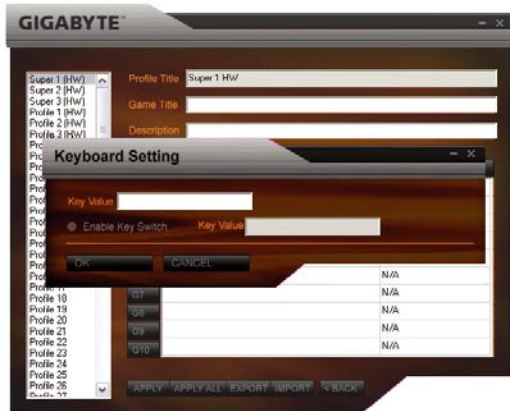
For example: User can select Super 1(HW) G1 to be mouse right click button, user can set a combination of mouse movement, such as left mouse button, middle mouse button or mouse right button. Captured picture as below:



4-2-2 Keyboard Setting

You can select a "G" key to be single key click , only for A-Z , 0-9.

For example: User can select G2 as capital B while click the keypad, user also can set a switch key, means once you select enable key switch, screen will appear A,B,A,B,... continuously. Captured picture as below:



4-2-3 Macro Setting

You can select a "G" key to be single Marco click button

For example: User can select G3 as Marcos in, single macro setting screen as below:



You can also record the active macro:

- (a) Macro name: User can set Macro name individually.
- (b) Time delay type: User can select auto-detect user's acquisition time or fixed delay by set delay time.
 - Auto-detect: after record Macro, it will auto record active time from after click.
 - Fixed Delay: User define delay time, after record Macro, it will be fix time.
 - No delay



After stop recording Marco, user can set delay time by double click left mouse bottom.

- (c) Start to record: When click start to record, your every move will be automatically record into your Marco list.
- (d) Stop record: When click stop to recording, your movement will be terminated.
- (e) Offer right click hot key selection, you can also

Insert	(1) Mouse single click button (2) Key single click button (3) Macro (4) Time setting
Remove	Remove all of the selected value
Move up	Move one step up of the selected value
Move Down	Move one step down of the selected value
Clean all	Will clean all of the selected value



Insert Marco setting

Offer user can set Marco setting at the Marco project items.



(f) G-key action loop type:

- Run once: this is default setting, means when Macro been clicked, active only once
- Re-pressing to stop: means Macro will continue to record until press to stop function key been double clicked.
- Release to stop: Active Marco while press the button, action terminated when released button.

4-2-4 Interrupt Key

You can use the "G" key as the interrupt key to stop the on-going action.

4-2-5 Launch APP

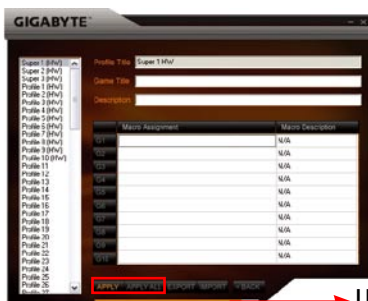
You can assign the "G" key to any program you use most for quick launch.

4-2-6 Cancel Setting

Disable and clean all of the original setting.



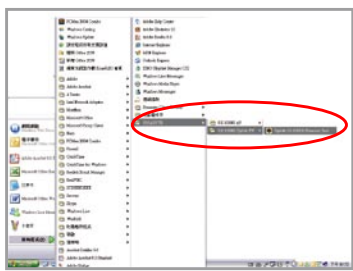
Please back to main menu(as below) when finish editing, and press "APPLY" or "APPLY ALL", the data will be current saved.



5 Updating Software

Step 1:

Press "Update GK-K8000 Firmware Tool" item.



Step 2:

Press "FW Upgrade" item.



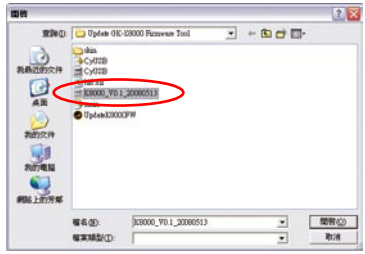
Step 3:

Press "Continue".



Step 4:

Select ".bin" file.



Step 5:

Upgrading now.



Step 6:

Upgrade Finish.



GK-K8000

GHOST™ 系列

使用手冊

版權

©2008 GIGA-BYTE TECHNOLOGY CO., LTD. All rights reserved.

本手冊所提及之商標，均屬其合法註冊公司所有。

責任聲明

本產品包裝內之物件所有權為技嘉科技所有。

本產品使用手冊保留變更產品規格而不另行通知之權利，未經技嘉科技許可，不得自行轉載，複製或散佈。若內容資訊變更，恕不另行通知。

如果您要徹底了解產品詳細規格資料，請仔細閱讀"使用手冊"。

產品相關資訊，請至網站查詢：<http://www.gigabyte.com.tw>



產品上之WEEE logo意指本產品必須透過特定廢棄物回收管道回收，不得任意拋棄！
此WEEE相關法令規定僅於歐盟國家實施。

目錄

1	簡介	4
1-1	產品簡介	4
1-2	產品特色	4
1-3	系統需求	4
1-4	包裝配件	5
1-5	配件組裝	5
1-5-1	鍵盤扶手組裝	5
1-5-2	更換鍵盤帽	5
2	鍵盤外觀及硬體安裝	6
2-1	鍵盤外觀	6
2-2	硬體安裝	6
3	軟體安裝	7
3-1	GHOST™ Engine軟體安裝	7
3-2	更新韌體安裝	7
4	軟體設定	8
4-1	GHOST™ Engine軟體主畫面及功能簡介	8
4-2	GHOST™ Engine軟體功能說明	10
4-2-1	Mouse Setting 滑鼠單鍵	10
4-2-2	Keyboard Setting 鍵盤單鍵	10
4-2-3	Macro Setting 單一巨集	11
4-2-4	中斷 (Interrupt), 您可以設定 "G" 鍵為中斷鍵	12
4-2-5	Launch APP	12
4-2-6	Cancel Setting 刪除設定	12
5	更新韌體	13

1 簡介

1-1 產品簡介

技嘉週邊率先推出世界第一支機械式遊戲鍵盤--GK-K8000。

GK-K8000採用了無段落感且能承受六千萬次敲擊的Cherry MX系列黑軸按鍵，讓您可以放心的玩遊戲，維持手感，不用擔心玩得太激烈而減短鍵盤的壽命。另外，巨集的功能也是目前業界之最，內建4Mb記憶體，搭配隨機附贈的GIGABYTE GHOST™編輯軟體，3組超級快切、10組硬體快切及90組軟體切換，讓您悠遊於FPS、RTS、和RPG的遊戲世界。

另外提供隨身袋，讓您能夠隨心所欲的帶著鍵盤到處遊玩！且GK-K8000內含USB數位音訊處理器，數位音源輸出/輸入，音質清晰高抗噪，採用專利遊戲鍵盤扶手設計，高收納性，GK-K8000將帶給你嶄新的遊戲體驗。

1-2 產品特色

1. 全球首支機械式遊戲專用鍵盤
2. 採用業界最高等級Cherry MX系列按鍵機械開關，單鍵壽命高達六千萬次
3. 支援103組巨集對應，包含13組硬體切換模式
4. 可搭配專業級GHOST™ Engine編輯軟體
5. 內建USB音效裝置並附耳機孔及麥克風孔
6. 多媒體快速鍵
7. 可調整角度之多功能專利設計扶手

1-3 系統需求

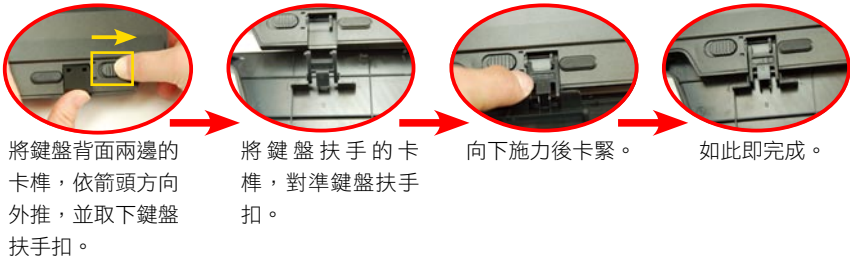
1. CD-ROM 或 DVD-ROM 光碟機
2. 1個以上USB2.0 埠
3. 100 MB或以上硬碟空間
4. Windows® XP /Vista

1-4 包裝配件



1-5 配件組裝

1-5-1 鍵盤扶手組裝



1-5-2 更換鍵盤帽



請勿用力向下拔出鍵帽，如此會使鍵帽拉拔器斷裂。

2 鍵盤外觀及硬體安裝

2-1 鍵盤外觀



2-2 硬體安裝

步驟1 · 將USB-B 公頭接上 GK-K8000 的USB埠

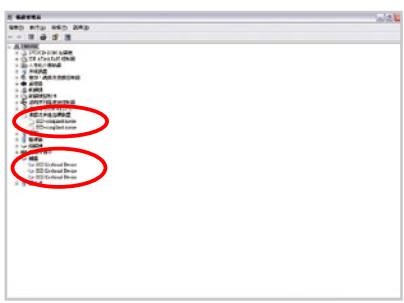
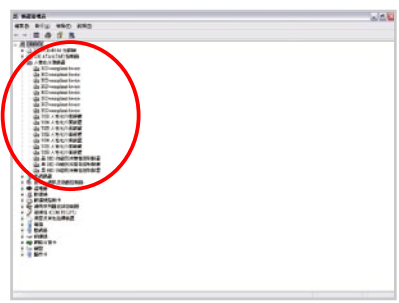


USB 線

步驟2 · 將USB-A 公頭接上桌上型或筆記型電腦的USB埠



步驟3 · 打開控制台->系統->硬體->裝置管理員，確認鍵盤是否正常運作



3 軟體安裝

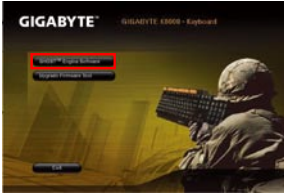
在此我們假設您的CD-ROM或是DVD-ROM磁碟代號是D：

當您將驅動程式放入光碟機後，自動程式會開啟AUTORUN畫面，如果您的系統未出現此畫面，您可以執行「D:\Setup.exe」，如此就可以看到這一個畫面了。接著您只要點選AUTORUN畫面選項即可完成安裝動作。

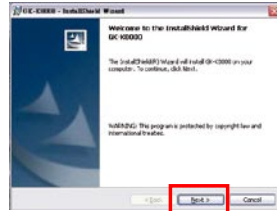
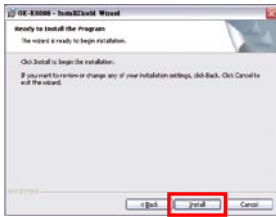
3-1 GHOST™ Engine軟體安裝

步驟1 · 選擇「GHOST™ Engine Software」
按鈕

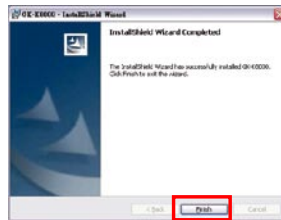
步驟2 · 按「Next」按鈕



步驟3 · 按「Install」按鈕進行安裝作業



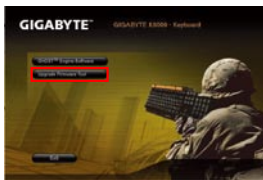
步驟4 · 按「Finish」按鈕，即安裝完成



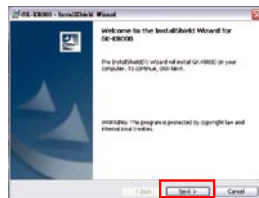
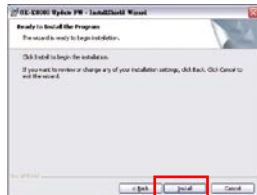
3-2 更新韌體安裝

步驟1 · 選擇「Upgrade Firmware Tool」
按鈕

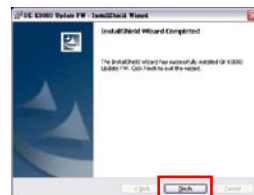
步驟2 · 按「Next」按鈕



步驟3 · 按「Install」按鈕進行安裝作業



步驟4 · 按「Finish」按鈕，即安裝完成



4 軟體設定

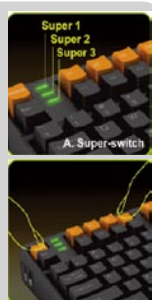
巨集編輯

透過技嘉專屬的 GHOST™ Engine及內建4Mb的記憶體容量，GK-K8000支援硬體記錄13組巨集（內含3組超級快切及10組硬體快切），讓您不需要另外安裝軟體即可以帶著鍵盤四處征戰。除了硬體記憶之13組巨集，更可以利用GHOST軟體載入剩餘的第11~100組 Profile 設定。身為玩家的您，絕對不能錯過！



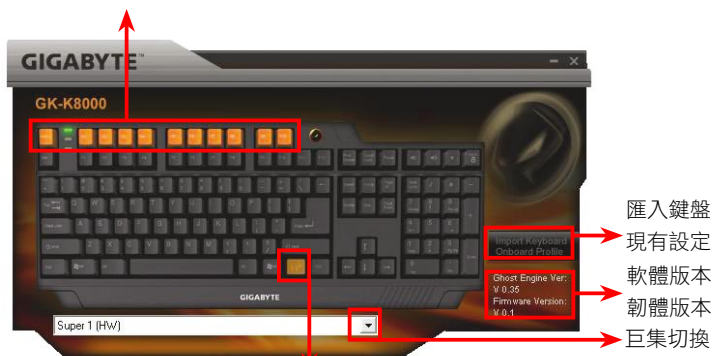
三種巨集切換模式

1. 超級快切模式：
當您第一次按下Profile鍵時，巨集將指向Super1，再按一次則會轉換至Super2，以此類推。
2. 硬體快切模式：
您只需要按下Profile鍵再加上橘色的G鍵，則可指向其餘的巨集設定。例如：當您需要切換至Profile 4，則長按Profile鍵，再按下G4鍵即可。
3. 軟體切換模式：
您可透過GHOST軟體做相關設定。



4-1 GHOST™ Engine軟體主畫面及功能簡介

請按下Profile鍵，或任一G1-G10鍵，進行各項功能設定。



反橘：Ghost™ Engine Software快速呼叫鍵
一般：功能選擇鍵

每個Profile的Game Title
可以自行設定一個對應
遊戲的名稱。



GK-K8000總共會有
103組Profiles，前13
組為可跟隨硬體帶走
的設定，後90組為軟
體設定。

每個Profile
的Description欄位可以
自行編寫內容。

每個Profile會有10個Key值(G1-G10)可以設定功能鍵，滑鼠按右鍵可設定的功能鍵包含有：

- | | |
|--------------------------|--------------------------------------|
| (1) Mouse Setting滑鼠單鍵 | 設定功能鍵為滑鼠單鍵 |
| (2) Keyboard Setting鍵盤單鍵 | 設定功能鍵為鍵盤單鍵 |
| (3) Macro Setting巨集設定 | 設定功能鍵為巨集鍵 |
| (4) Interrupt Key中斷鍵 | 設定功能鍵為中斷鍵 |
| (5) Launch APP | 設定功能鍵為快速啟動程式鍵
(僅支援Profile 11-100) |
| (6) Cancel Setting刪除設定 | 將功能鍵原有的設定取消 |

確認按鈕說明：

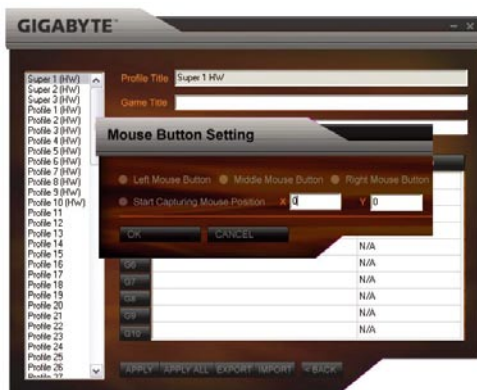
- | | |
|-----------|----------|
| APPLY | 針對單一設定儲存 |
| APPLY ALL | 針對全部設定儲存 |
| EXPORT | 匯出設定 |
| IMPORT | 匯入設定 |
| BACK | 回上一層 |

4-2 GHOST™ Engine軟體功能說明

4-2-1 Mouse Setting 滑鼠單鍵

您可以選擇特殊鍵為滑鼠單鍵，及指定滑鼠座標。

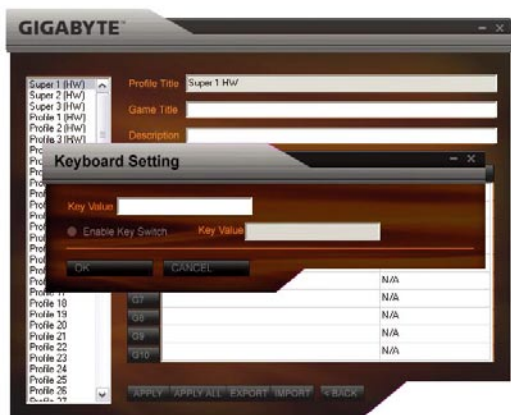
舉例來說：使用者可以設定Super 1(HW)的G1等於滑鼠右鍵，您可以設定的Mode動作有下列組合，目標為滑鼠左鍵、滑鼠中鍵、或是滑鼠右鍵，亦可指定滑鼠座標。滑鼠單鍵設定畫面如下：



4-2-2 Keyboard Setting 鍵盤單鍵

您可以選擇特殊鍵為鍵盤單鍵。(僅支援英文A-Z鍵及數字0-9鍵值)

舉例來說：您可以設定G2等於按下大寫B鍵，也可以將特殊鍵設定為雙鍵切換，也就是您可以將特殊鍵的雙鍵切換選項(Enable Key Switch)打勾後，按下相對應的鍵值，連續按將會出現A，B，A，B...
鍵盤單鍵設定畫面如下：



4-2-3 Macro Setting 單一巨集

您可以選擇特殊鍵為單一巨集按鍵。

舉例來說：您可以設定G3等於巨集指令，單一巨集設定畫面如下：



您可以錄製想要表現的巨集：

- Macro Name 巨集名稱：使用者可以自行輸入巨集名稱。
- Time Delay Type 延遲時間型態：使用者可以選擇Auto-detect自動偵測使用者時間或是Fixed Delay設定固定延遲時間。
 - ★ Auto-detect自動偵測使用者時間：在開始錄製後，自動偵測按鍵之間的時間差顯示到列表。
 - ★ Fixed Delay設定固定延遲時間：使用者輸入希望的延遲時間，在開始錄製後，不論實際按鍵之間的時間差，都會是固定的時間。
 - ★ No Delay無延遲時間。



您在停止錄製後，可以針對任何一個延遲時間按右鍵雙擊進行修改。

- Start to Record 開始錄製：當您按下[Start to Record開始錄製]時，您所按下的每個滑鼠／按鍵動作都會自動加入清單中。
- Stop Recording 停止錄製：當您按下[Stop Recording停止錄製]時，停止錄製各種動作。
- 提供滑鼠右鍵快速選單，您亦可以

Insert插入	(1)滑鼠單鍵 (2) 鍵盤單鍵 (3) 巨集 (4) 延遲時間
Remove移除	將目前所選中的鍵值移除
Move Up上移	將目前所選中的鍵值往上移動一格
Move Down下移	將目前所選中的鍵值往下移動一格
Clean All清除所有的鍵值設定	將所有選單中的鍵值設定清除



巨集設定中插入巨集：

提供您在設定巨集鍵的時候，也可以插入您之前曾設定儲存過的巨集檔。



(f) G-Key Action Loop Type：

- ★ Run Once執行一次：
此為預設值，表示此巨集鍵被按下時，只會執行一次。
- ★ Re-pressing to stop：
表示此巨集會一直執行，直到此按鍵又被按下時，此巨集才會停止動作。
- ★ Release to stop：
按鍵時持續執行，離開按鍵時則停止動作。

4-2-4 中斷 (Interrupt)，您可以設定 "G" 鍵為中斷鍵

您如果想要將目前正在執行中的巨集指令停止，就可以按下此按鍵。

4-2-5 Launch APP

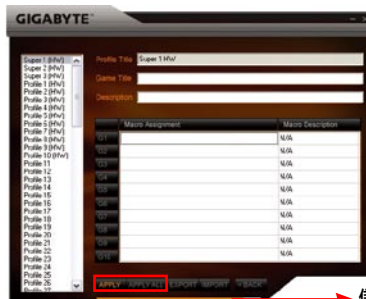
您可以設定 "G" 鍵為啟動您系統已安裝的程式的快速鍵。

4-2-6 Cancel Setting 刪除設定

您可以選擇此設定讓功能鍵原有的設定清除。



編輯完畢後，請務必回到以下編輯畫面，按下"APPLY" 或 "APPLY ALL"，如此全部設定才被儲存。

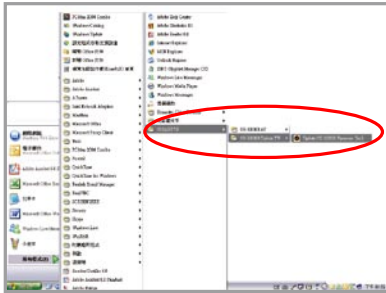


儲存更新中。

5 更新韌體

步驟 1：

選擇「Update GK-K8000 Fireware Tool」選項。



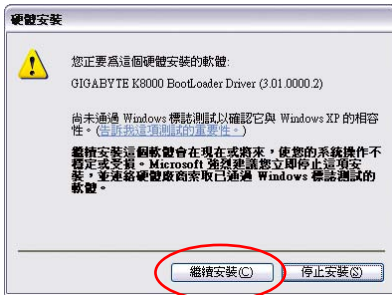
步驟 2：

按下「FW Upgrade」按鈕。



步驟 3：

選擇「繼續安裝」。



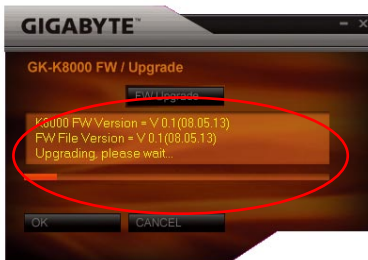
步驟 4：

選擇副檔名為「.bin」之檔案。



步驟 5：

此時程式會自動執行更新動作。



步驟 6：

更新完成。



