

GIGABYTE™

ANVIL 2.5" Mobile Enclosure

- Enhanced cooling performance with aluminum body
- Compatible with both 3.5" and 5.25" profiles
- External usage via USB connectivity
- Docking connectivity via SATA interface
- Easy installation
- Compatible with Mac / Windows OS
- Plug & Play and Hot-swap capability



Specifications

HDD Type	2.5" SATA HDD
External Interface	USB2.0
Internal Housing Interface	SATA
Material	Aluminum
Color	Black/Silver
Dimensions (DxWxH)	136.5x79.4x16 mm
Weight	122g
System Support	Mac OS 9.x or above Linux 2.4.1.0 or above Windows ME/ 2000 /XP /VISTA Windows 98 (if drivers are necessary, please visit GIGABYTE website for downloads)



CAUTION

The followings are not covered by warranty:

1. Using the product incorrectly or in a manner other than the designed purpose.
2. Non-observance of the proper operation provided. E.g. Input higher current than original specs.
3. Malfunction caused by interference from other devices.
4. Incorrect installation of HDD type.
5. Unapproved modification of the product.
6. Malfunction caused by natural hazards, earthquakes, lightning, fire or floods.
7. Any loss/damage caused by failure to follow the installation process within the user manual.
8. All devices are detached from the casing prior to the transportation of the computer system, resulting in damages to the casing or other computer related devices.
9. Warranty is only valid for 1 year from date of purchase.

Accessories



SATA Cable



USB Cable



USB Power Cable



3.5" Internal Housing Securing Screws x 5



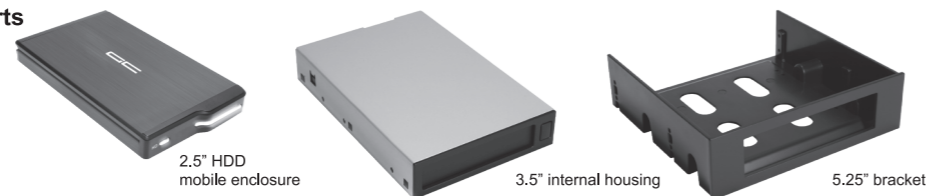
2.5" HDD Securing Screws x 4



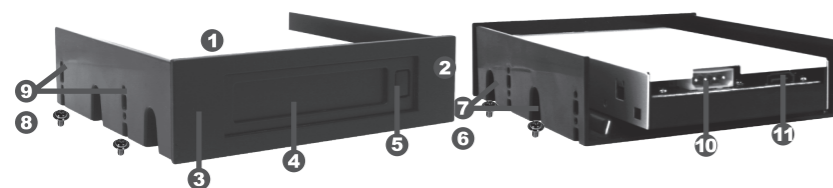
5.25" Bracket Securing Screws x 4

01 Introduction

1.1. The Anvil is divided into three parts



The 3.5" internal housing can be inserted into the 3.5" front device bay OR attached to the 5.25" bracket and inserted into the 5.25" front device bay of the case.



★ Description of 3.5" Internal Housing and 5.25" Bracket

1. Metal top cover
2. 5.25" bracket
3. 3.5" internal housing
4. Flip cover
5. Eject Button
6. 5.25" Bracket and 3.5" internal housing securing screws
7. 5.25" Bracket and 3.5" internal housing screw holes
8. PC case securing screws
9. PC case 5.25" screw holes
10. 4-pin power port
11. SATA port

1.2. 2.5" HDD Mobile Enclosure

The 2.5" HDD Mobile Enclosure has a 22-pin SATA connector and is designed for the 3.5" internal housing usage. As an external enclosure, the user can also connect it to a PC via USB port.



★ Description of 2.5" HDD Mobile Enclosure

1. Plastic front cover
2. Light operation indicator
3. Aluminum case
4. Enclosure PCB
5. Plastic back cover
6. Securing screws
7. 22-pin SATA connector
8. USB 2.0 connector
9. 5V DC connector

02 3.5" Internal Housing Installation Guide

STEP1: Insert the 3.5" internal housing into the 3.5" front device bay of the case OR secure the 3.5" internal housing to the 5.25" bracket then Insert the 5.25" bracket into the 5.25" front device bay of the case.

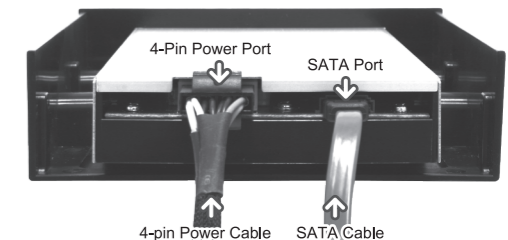


3.5" front device bay



5.25" front device bay

- STEP2 : Connect the 4-pin power cable to the 3.5" internal housing 4-pin power port.
STEP3 : Connect the SATA cable to the 3.5" internal housing SATA port.
STEP4 : Connect the other side of SATA cable to the SATA port on the motherboard.
(Refer to the manual provided by the motherboard manufacturer.)



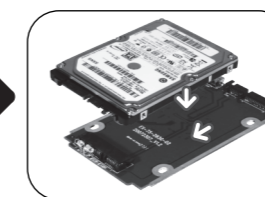
4-pin Power Cable SATA Cable

03 2.5" HDD Mobile Enclosure Assembly Guide

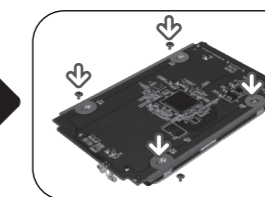
- STEP1 : Slide out/Remove the enclosure PCB from the 2.5" HDD mobile enclosure aluminum case.
STEP2 : Connect the 2.5" HDD to the SATA connector on the enclosure PCB.
STEP3 : Secure the 2.5" HDD to the enclosure PCB with the securing screws.
STEP4 : Slide the enclosure PCB into the 2.5" HDD mobile enclosure aluminum case. Secure the plastic back cover to the aluminum case.



STEP1



STEP2



STEP3



STEP4

04 Operation of the Anvil Mobile Rack Enclosure

4.1. Insertion of the 2.5" HDD Mobile Enclosure.

- STEP1 : Insert the 2.5" HDD mobile enclosure into the 3.5" internal housing.
STEP2 : Push the 2.5" HDD mobile enclosure into the 3.5" internal housing until the 2.5" HDD mobile enclosure is firmly secured.



STEP1



STEP2

4.2. Removal of the 2.5" HDD Mobile Enclosure.

- STEP1 : Press the eject button.
STEP2 : Remove the 2.5" mobile enclosure from the 3.5" internal housing.



STEP1



STEP2