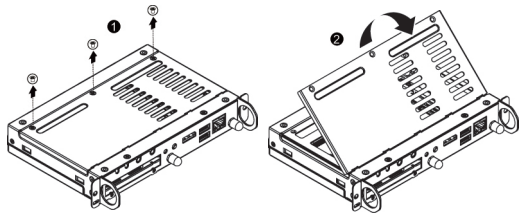


Set up the system

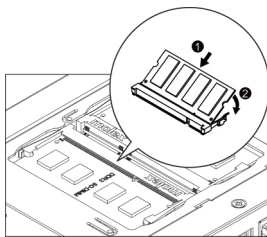
GB-SIOPS Quick Start Guide

1. Removing Back Cover



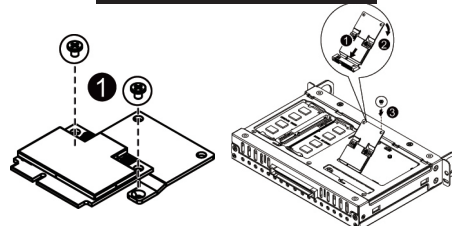
1. Make sure the system is not turned on or connected to an outlet.
2. Loosen and remove the three screws securing the back cover.

2. Installing Memory



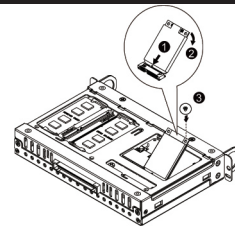
1. Align the memory with the SODIMM and insert the SODIMM memory module into the SODIMM slot.
2. Push down the memory and seat it firmly.

3. Installing WiFi Module



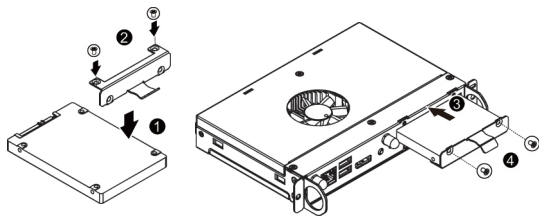
1. Fix wifi card and extension card with screws.
2. Align the WiFi card with the Mini Card Slot and insert the card into the slot.
Please note that the WiFi module has a foolproof insertion design.
A WiFi module can be installed in only one direction.
3. Press down the WiFi card and fasten it firmly with a screw.

4. Installing mSATA Module



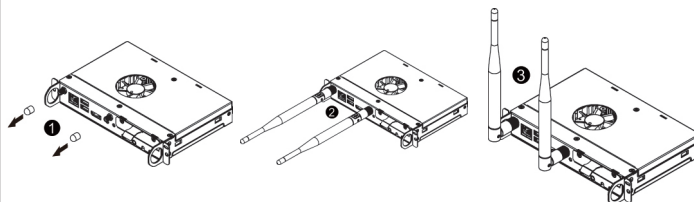
1. Align the mSATA card with the socket and insert the card into the socket.
Please note that the mSATA module has a foolproof insertion design. A mSATA module can be installed in only one direction.
2. Press down the mSATA card and fasten it firmly with a screw.

4. Installing Hard Disk Drive



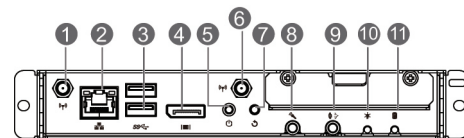
1. Attach the bracket on the HDD.
2. Secure the bracket on the HDD with two (2) screws as shown.
3. Slide the HDD into the bay until it locks into place.
4. Secure the hard drive to the system with two (2) screws as shown.
Do not over tighten these screws.

5. Installing Antenna (Option)



1. Remove the protective rubbers.
2. Attach the antenna to the system as shown.
3. Fold the antenna as shown.

System I/O Connectors



Rear Side

- | | |
|----------------------|---------------------------|
| 1. Antenna connector | 7. Reset button |
| 2. LAN port | 8. Microphone input jack |
| 3. USB 3.0 Ports | 9. Audio/Headphone Output |
| 4. DP port | 10. Power LED |
| 5. Power button | 11. HDD Status LED |
| 6. Antenna connector | |