

GP-S5500

USB-POWERED TWO-PIECE AUDIO SYSTEM

Owner's Manual

Thank you for purchasing this GIGABYTE audio product. GIGABYTE designed this amplified system to provide true-to-life stereo performance for music, PC games, and video, plus high-quality sound from a variety of desktop audio sources. Unique features make this system a superior choice for home or office workplaces.

GP-S5500 USB series audio system benefits include:

- Built-in Class-D amplifier for quality sound under 1W
- USB powered, plug to play, no power adapter required
- Reflex tube to enhance bass performance
- Sphere cabinet design, reducing standing wave inside and delivering more clear sound
- Magnetic shielding that allows speaker placement next to your monitor or television without on-screen color distortion

MAKING CONNECTIONS

Turn off audio source before connecting it to the speaker system. To ensure first-time operation as expected, please carefully follow the connection sequences described below in the order indicated.

POSITIONING THE SPEAKERS

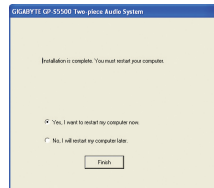
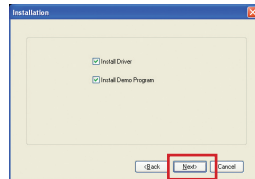
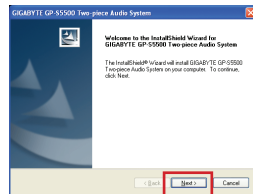
Choose a stable, level surface for the speakers. Vibration can cause them to move, particularly on smooth surface like a desktop.

INPUTS

Locate the USB cable to the USB port on the laptop computer and PC. The USB connection will provide both the power and the audio signal to the speaker system.

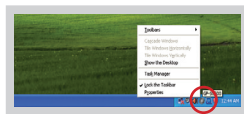
DRIVER INSTALLATION

- Put Driver CD into CD-ROM or DVD-ROM and follow the on-screen instructions to complete driver installation.
- Follow the installation processes and press the "next" button to continue.
- You can select install driver only or both driver and demo program and click "next" to continue installation.
- When set up program complete installation, system will restart to initialize the driver.

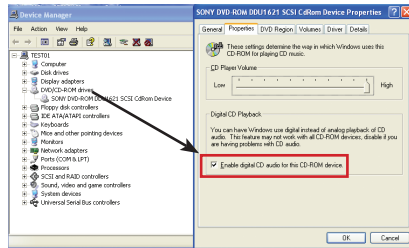


If your OS is WinXP, system may pump up a dialog box asking you about windows logo issue, please click "Continue Anyway" to complete the setup process..

- If your PC has more than one USB port, you can just plug USB speaker to any USB port. If this connect is right that driver will auto detect device and show a task bar on the bottom right side of the screen to guiding you which port is correct.



- For good sound quality, please adjust your system's H/W acceleration and Sample rate conversion quality to Full and Best.

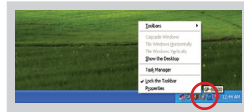


NOTE

Sometimes, when user plugs USB speaker on PC system and OS can't auto change audio device USB audio, please switch the audio device to USB audio sound and audio devices properties in control panel.

Enable Xear 3D™ Driver

User can open "control panel" to find Xear 3D™ audio driver and enable it.
Or you can check the bottom right side of the screen to double click Xear 3D™ task bar button.



SYSTEM SPECIFICATIONS

GIGABYTE superior and unique sound comes from our proprietary, which utilizes custom-built, high-fidelity driver based on latest materials science, state-of-the-art equalization circuitry, and a harmonious mix the following specifications:

繁中	連續輸出功率 頻率響應 單體 尺寸	1 Watts @ 4 ohms 100Hz ~ 20KHz 2.5" full range x 2 (W)103 x (H) 103 x (D)80 mm
-----------	----------------------------	---

English	Total RMS Power Frequency Response Drivers Dimensions	1 Watts @ 4 ohms 100Hz ~ 20KHz 2.5" full range x 2 (W)103 x (H) 103 x (D)80 mm
----------------	--	---

French	Puissance RMS au total Distorsion de fréquence éléments moteurs Dimensions	1 Watts @ 4 ohms 100Hz ~ 20KHz 2.5" full range x 2 (W)103 x (H) 103 x (D)80 mm
---------------	---	---

Germany	Totale RMS Leistung Frequenz Bereich Treiber Abmessungen	1 Watts @ 4 ohms 100Hz ~ 20KHz 2.5" full range x 2 (W)103 x (H) 103 x (D)80 mm
----------------	---	---

<u>Italy</u>	Potenza RMS totale Risposta in frequenza Drivers Dimensioni	1 Watts @ 4 ohms 100Hz ~ 20KHz 2.5" full range x 2 (W)103 x (H) 103 x (D)80 mm
<u>Spain</u>	Total RMS Power Frequency Response Drivers:(Conductores) Dimensiones	1 Watts @ 4 ohms 100Hz ~ 20KHz 2.5" full range x 2 (W)103 x (H) 103 x (D)80 mm
<u>Portugal</u>	Total RMS Power Resposta de Frequência Condutores Dimensões	1 Watts @ 4 ohms 100Hz ~ 20KHz 2.5" full range x 2 (W)103 x (H) 103 x (D)80 mm
<u>Russia</u>	полная РМС мощность частотная характеристика= ЧХ драйверы размеры	1 Watts @ 4 ohms 100Hz ~ 20KHz 2.5" full range x 2 (W)103 x (H) 103 x (D)80 mm

IMPORTANT SAFETY INSTRUCTIONS

1. Heat-
The speakers should be placed away from heat sources such as heat register, radiators, stoves or other speakers (including amplifiers) that produce heat.
2. Water and Moisture-
The speakers should not be near water, (for example, near a bathtub, washbowl, kitchen sink, laundry tub, in a wet basement, or near a swimming pool and do not immerse them into any liquid.
3. Outdoor use-
To reduce the risk of electric shock, please do not expose this speaker to rain or liquid.
4. Cleaning-
The Speaker can be cleaned only with a polishing cloth, or a soft dry cloth. Never clean with any type of furniture wax, benzene, insecticides or other volatile liquid since they may corrode the cabinet.
5. The satellite speakers ARE magnetically shielded and can be placed close to video displays such as TVs and computer monitors without distorting the image.
6. For most update information, you can also consult the FAQs on our website at www.gigabyte.com.

