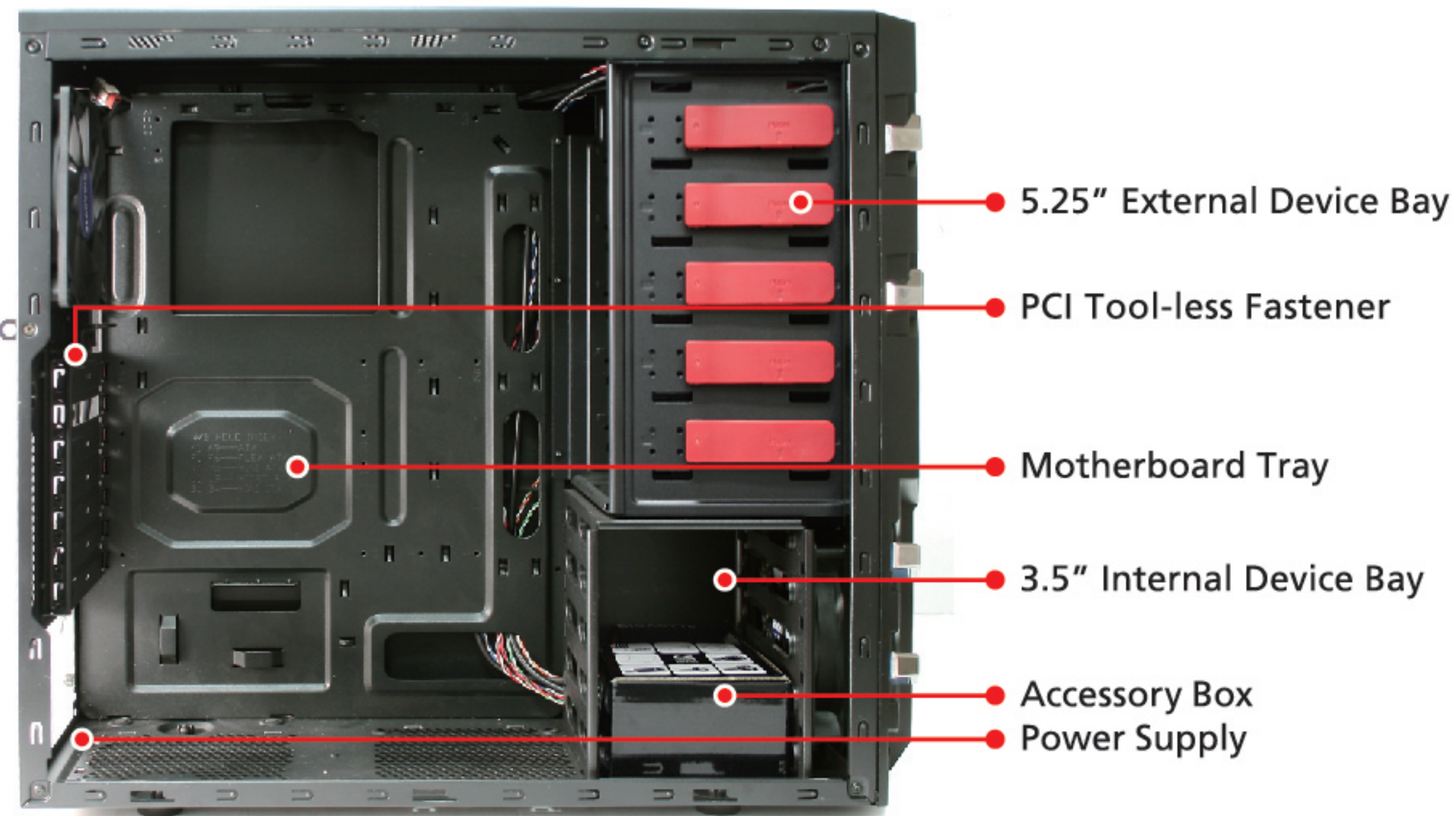


GIGABYTE™



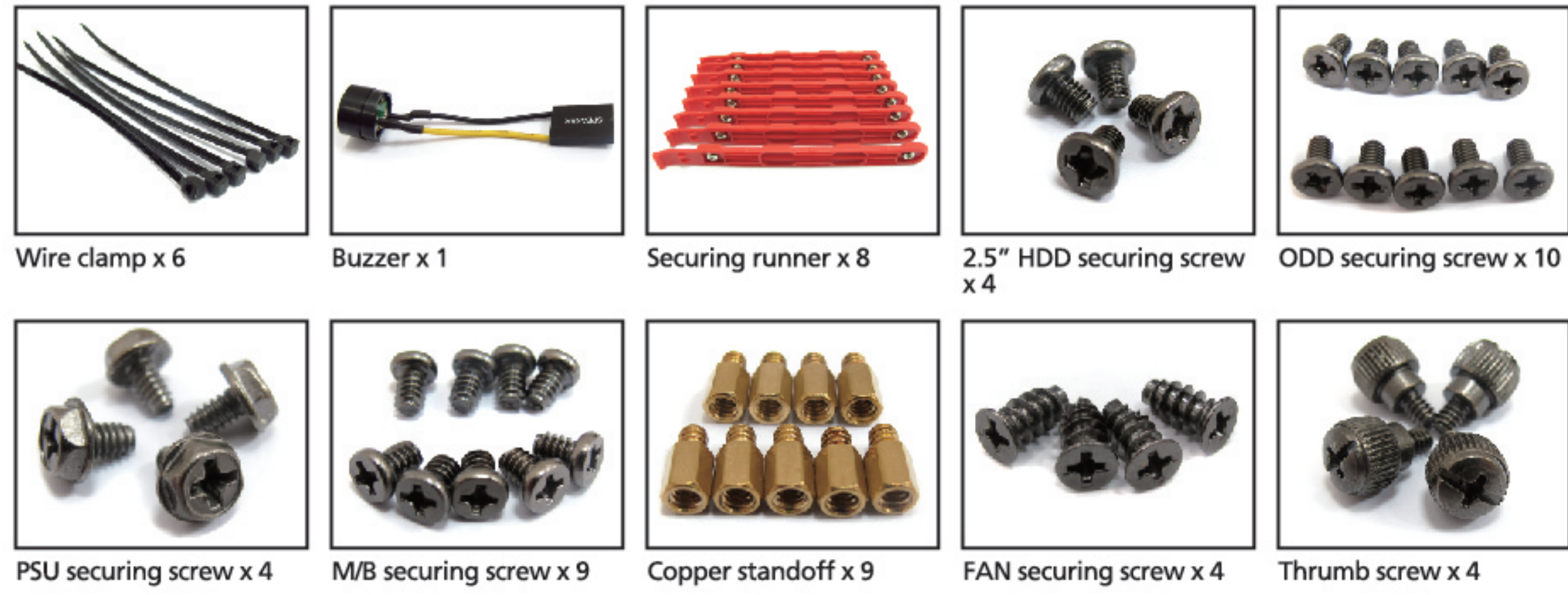
Product is not warranted if the product is modified, altered or repaired without authorization by GIGABYTE. Specifications and pictures are to change without notice. Different motherboards have different installation areas specifications, screw holes and connectors. For detailed instructions, please refer to the motherboard user manual supplied by the motherboard manufacturer.

Casing's Internal Structure



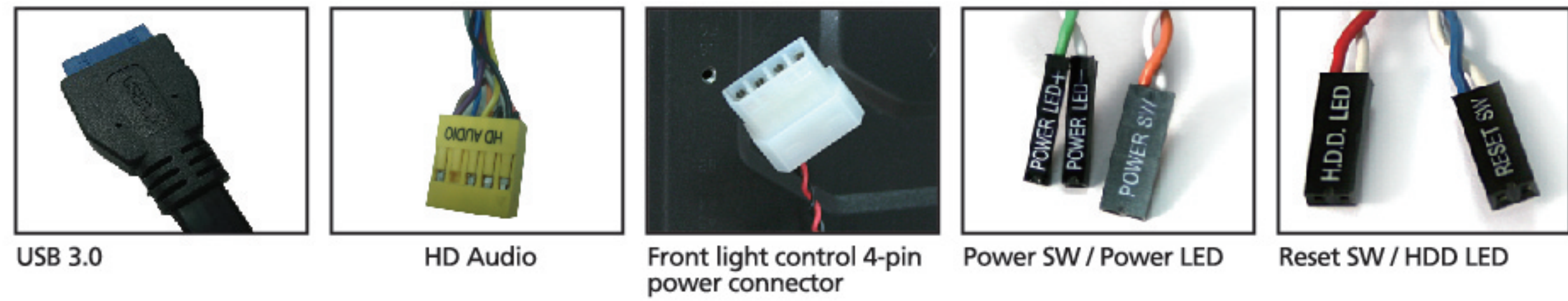
Accessory Box

(Refer to the figures below for the attachments in the accessory box)

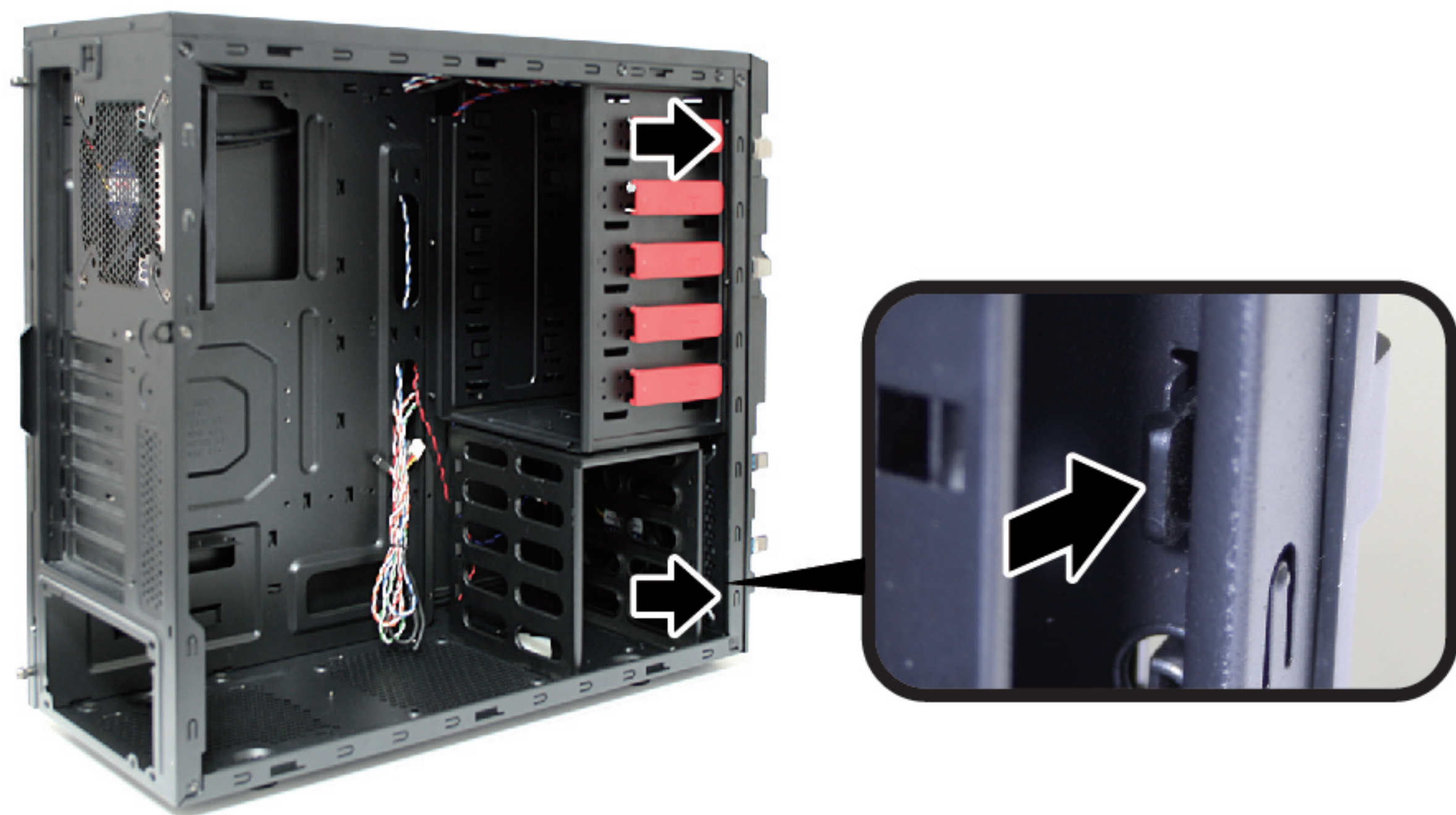


Cable Kit

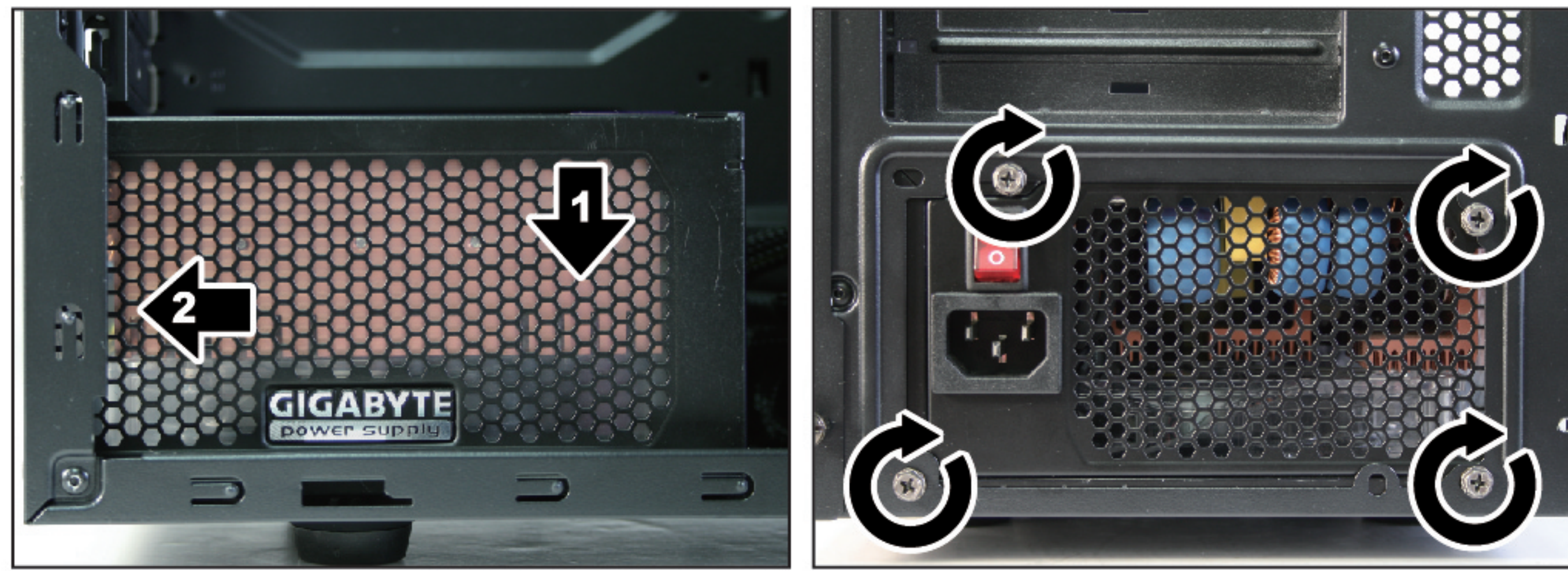
(Refer to the figures below for the cable connectors)



Step 1. Removal of Front Panel

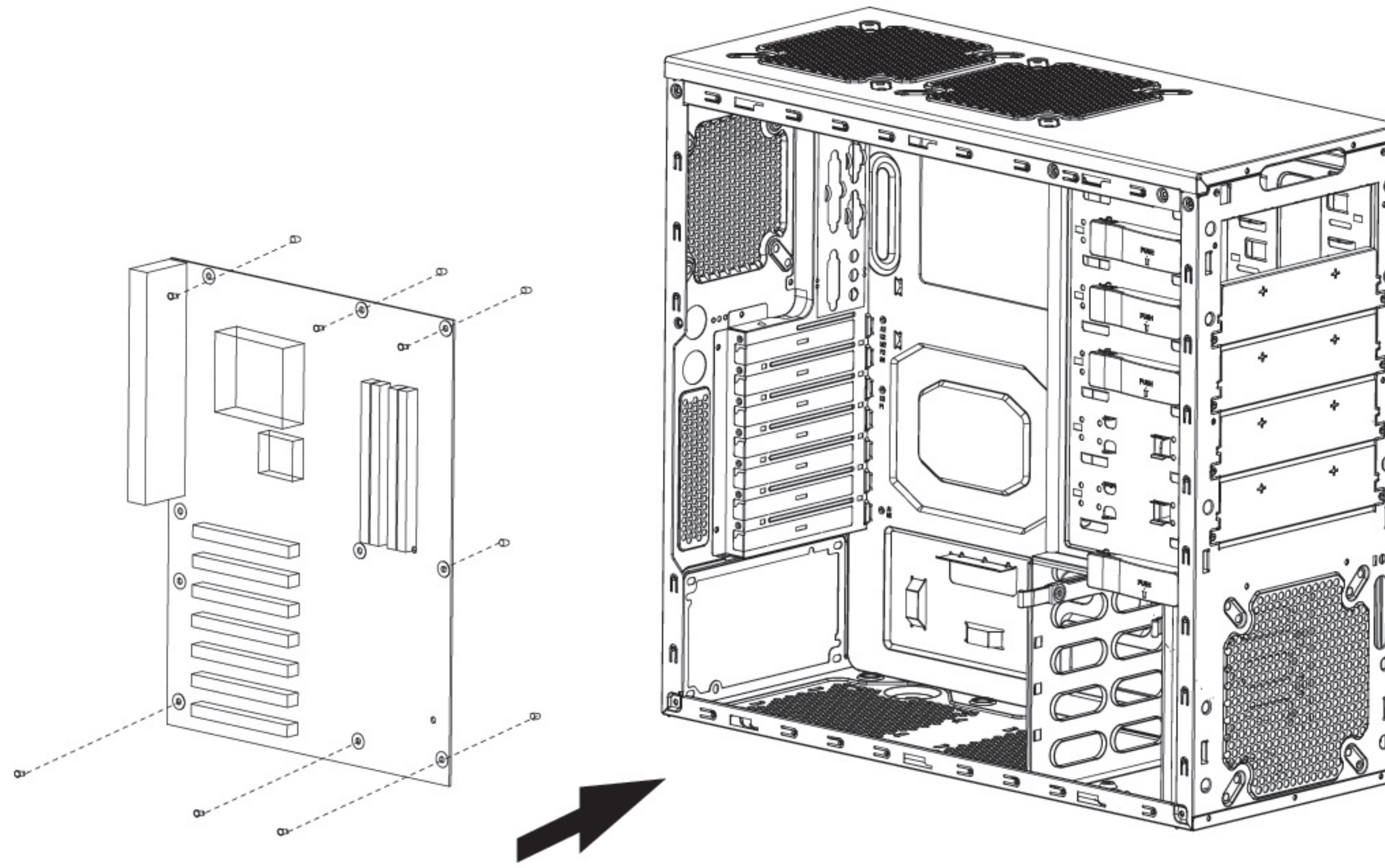


Step 2. Installation of Power Supply

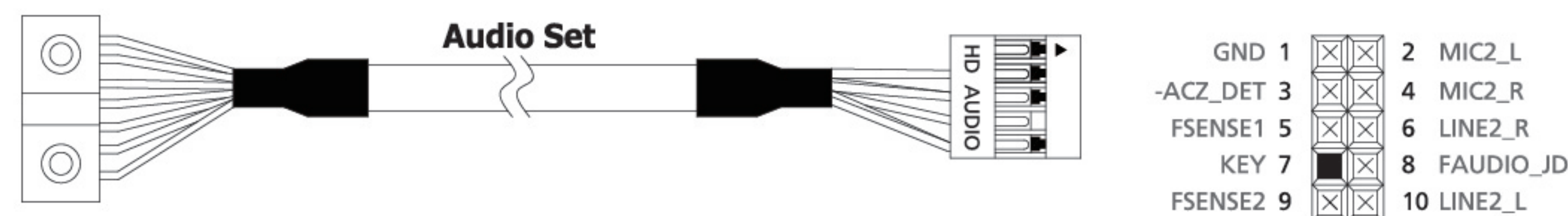


Step 3. Installation of Motherboard

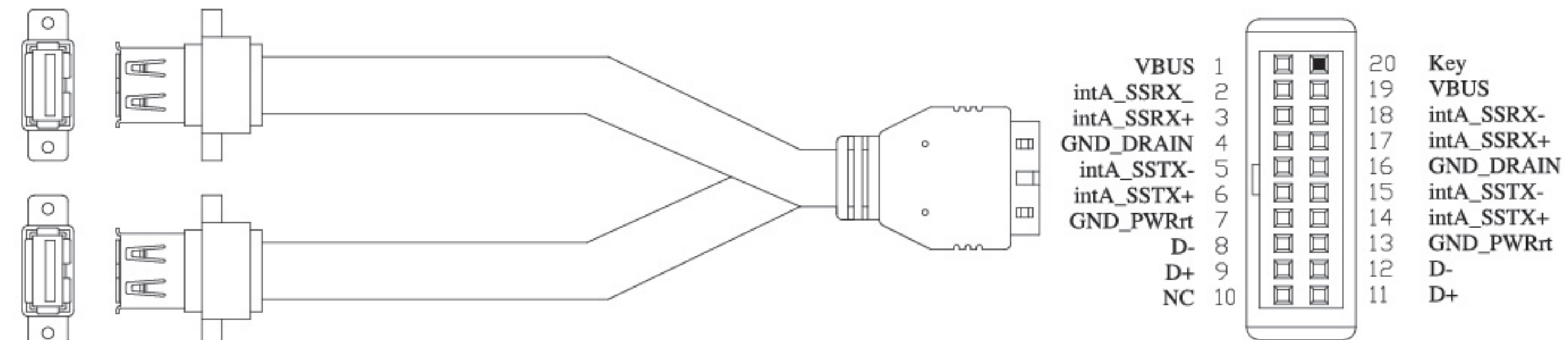
| Motherboard | Code name | Motherboard screw | Case copper post |
|-------------|-----------|-------------------|------------------|
| ATX | A1-A9 | 9 | 9 |
| Micro ATX | U1-U8 | 8 | 8 |
| Flex ATX | F1-F6 | 6 | 6 |
| Mini ITX | B1-B4 | 4 | 4 |



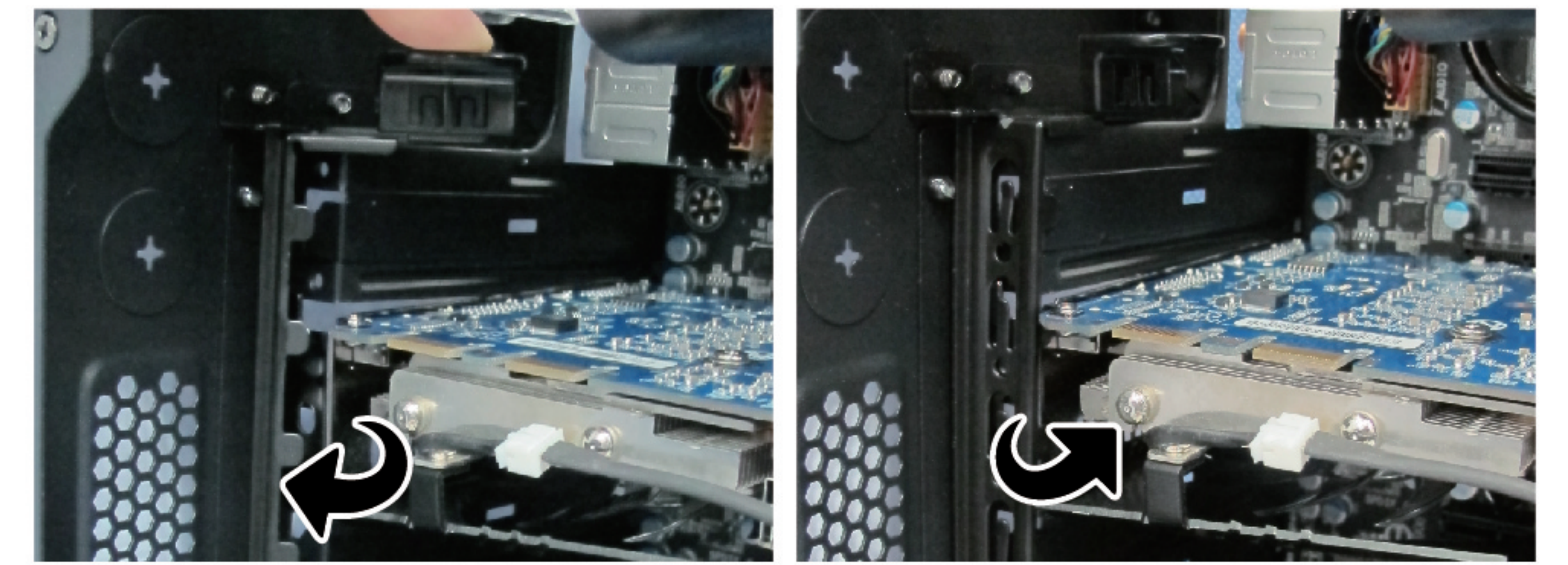
Step 4. Installation of Front I/O



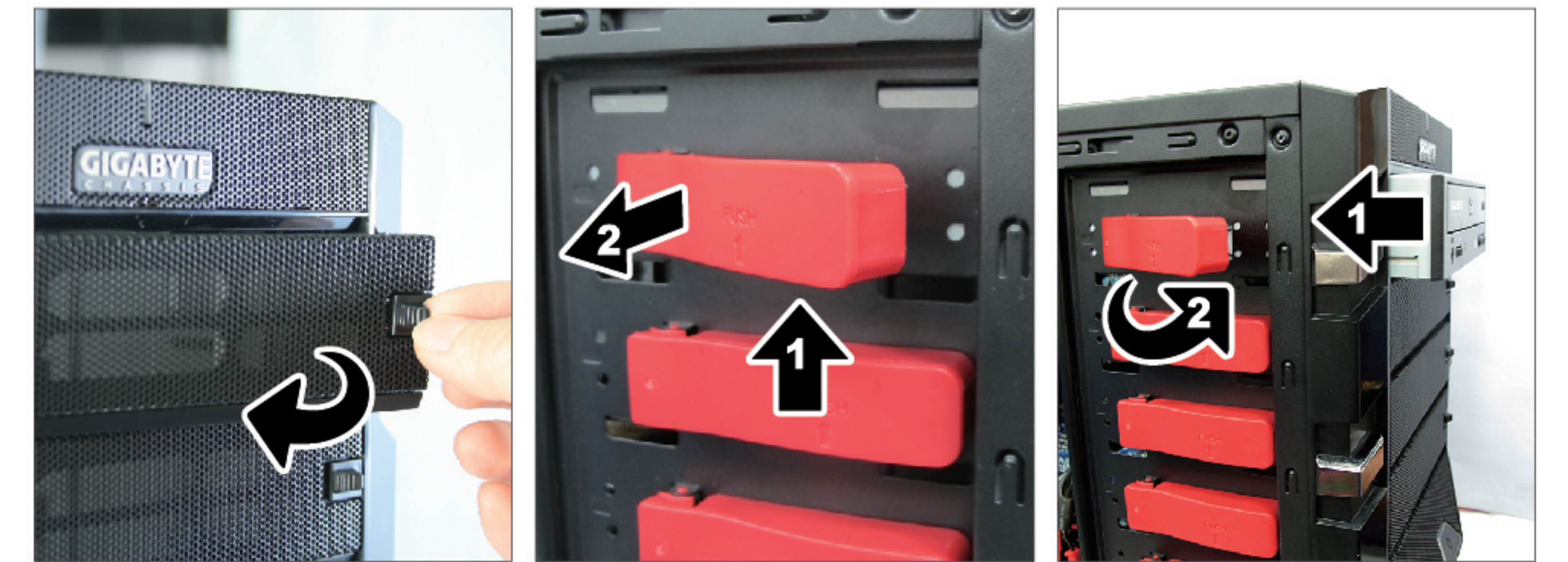
USB 3.0



Step 5. Installation of Add-on Card



Step 6. Installation of 5.25" External Driver Bay



Step 7. Installation of 3.5" Internal Driver Bay

