

Components Introduction

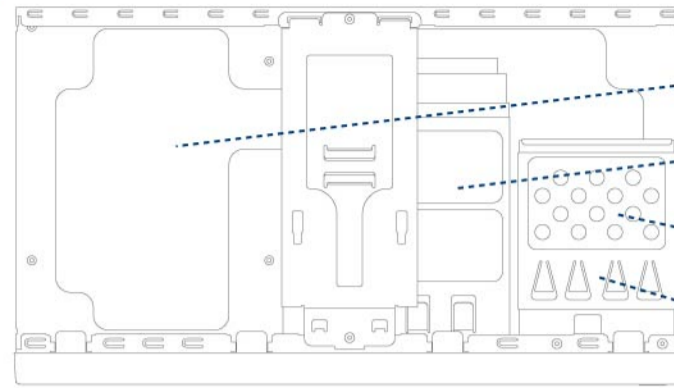
Casing's Internal Structure

- VESA
- Hinge
- Cable / Cord management
- Security slot
- DC Power jack
- Power button
- USB 2.0 ports
- AC'97 / HD audio



Components Introduction

Casing's Internal Structure



- Mini-ITX Motherboard
- 5.25" External drive bay
- 3.5" Internal drive bay
- 3.5" External drive bay

Accessory Box

MIB T5140 / MIB T5142

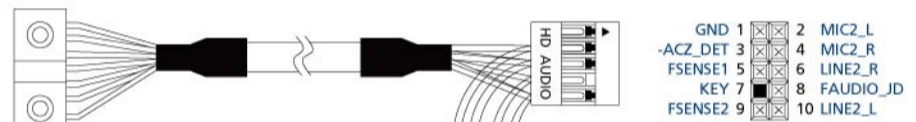
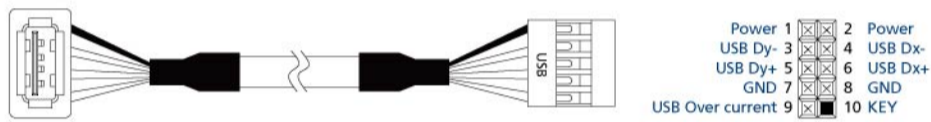


- HDD securing screw x 6
- Motherboard / ODD / Floppy securing screw x 12
- LCD Monitor securing screw x 4
- VESA thumb screw x 2
- Wire clamp x 1

⚠ Product is not warranted if the products is modified, altered or repaired without authorization by GIGABYTE. Specifications and pictures are to change without notice.

Installation of Front Multi-Media I/O ports

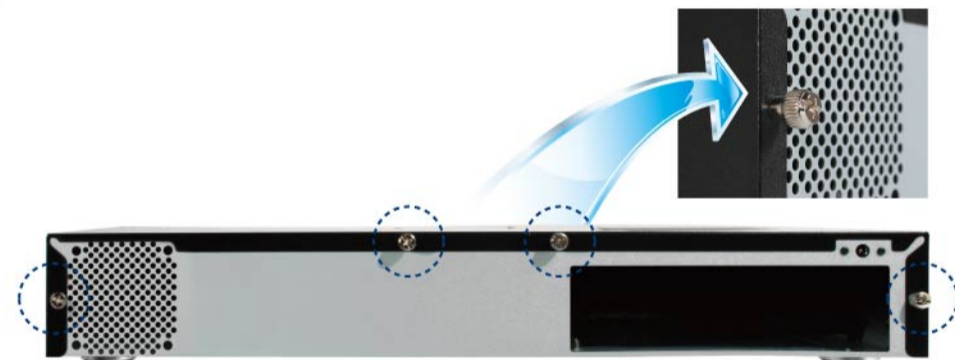
USB 2.0 ports & AC'97 / HD audio



⚠ Be sure that different motherboards may have different installation areas and specifications, screw holes and connectors. For detailed instructions, please refer to the motherboard user manual supplied by the motherboard manufacturer.

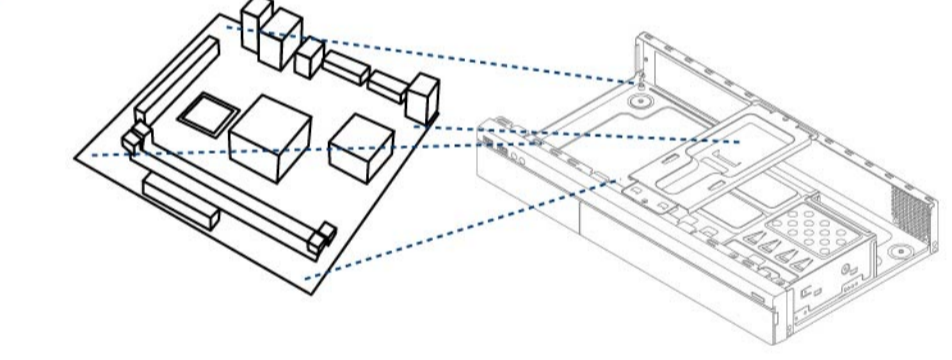
STEP 1

Remove top cover



STEP 2

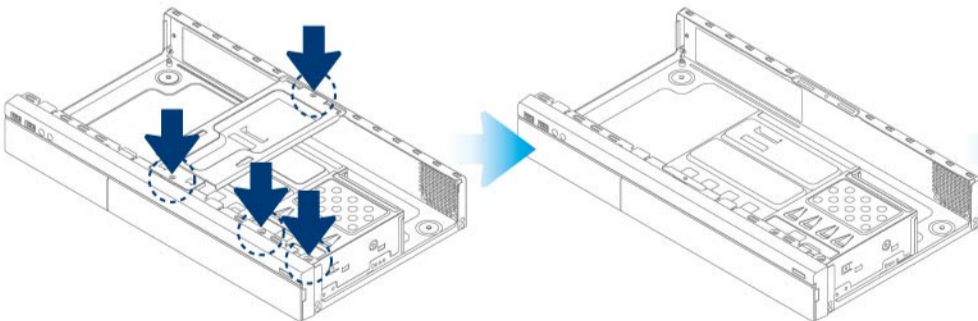
Installation of Motherboard



STEP 3

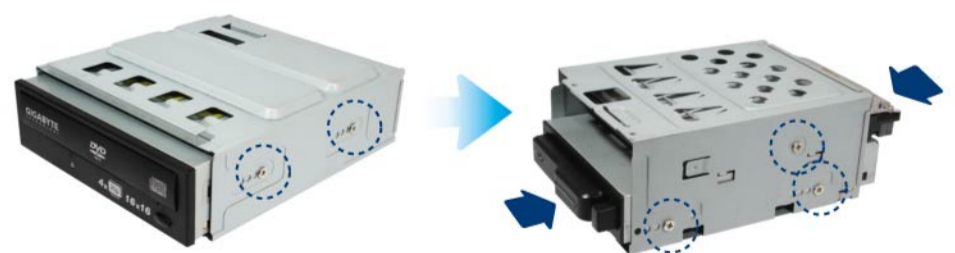
Installation of 5.25" & 3.5" Driver Bay

- ▼ Remove screw and Supporting plate
- ▼ Remove Drive Bay



▼ 5.25" Driver Bay

▼ 3.5" Driver Bay



STEP 4

Installation of LCD Monitor to CASE

⚠ Connect hinge onto chassis and mount monitor before adjusting the angle of the hinge.

