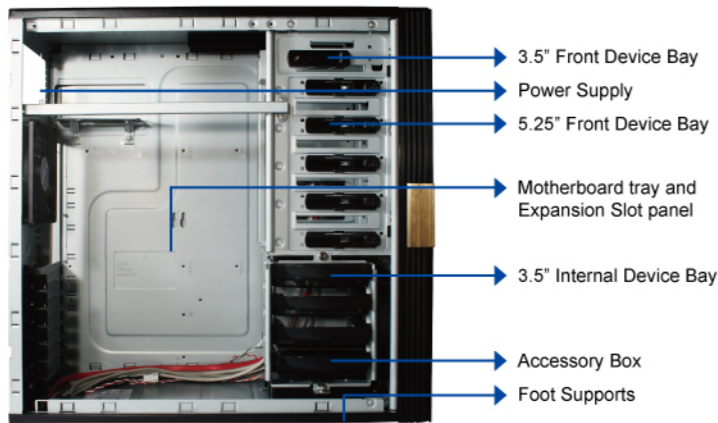




CUPIO 6140 GZ-AABC61-CNB Black

CAUTION Product is not warranted if the products is modified, altered or repaired without authorization by GIGABYTE. Specifications and pictures are to change without notice. Different motherboards have different installation areas and specifications, screw holes and connectors. For detailed instructions, please refer to the motherboard user manual supplied by the motherboard manufacturer.

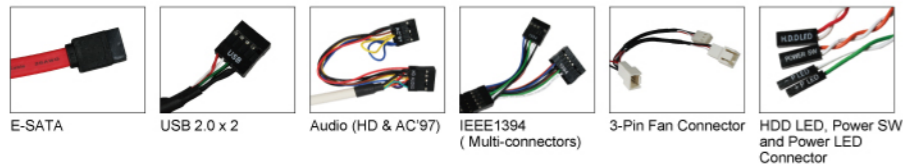
Casing's Internal Structure



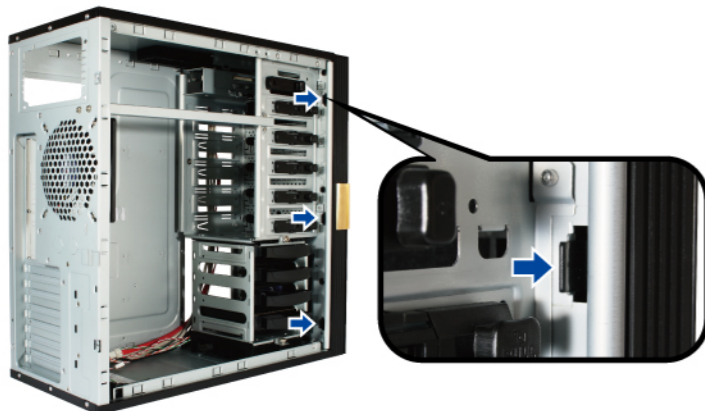
Accessory Box



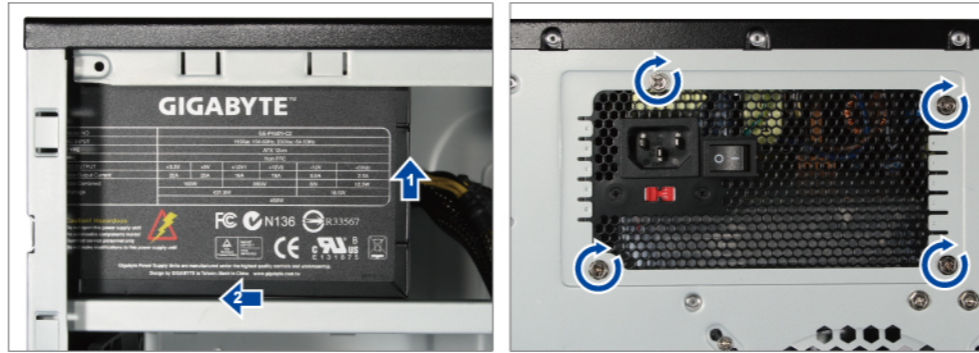
Cable Kit



Step 1. Removal of Side and Front Panel



Step 2. Installation of Power Supply

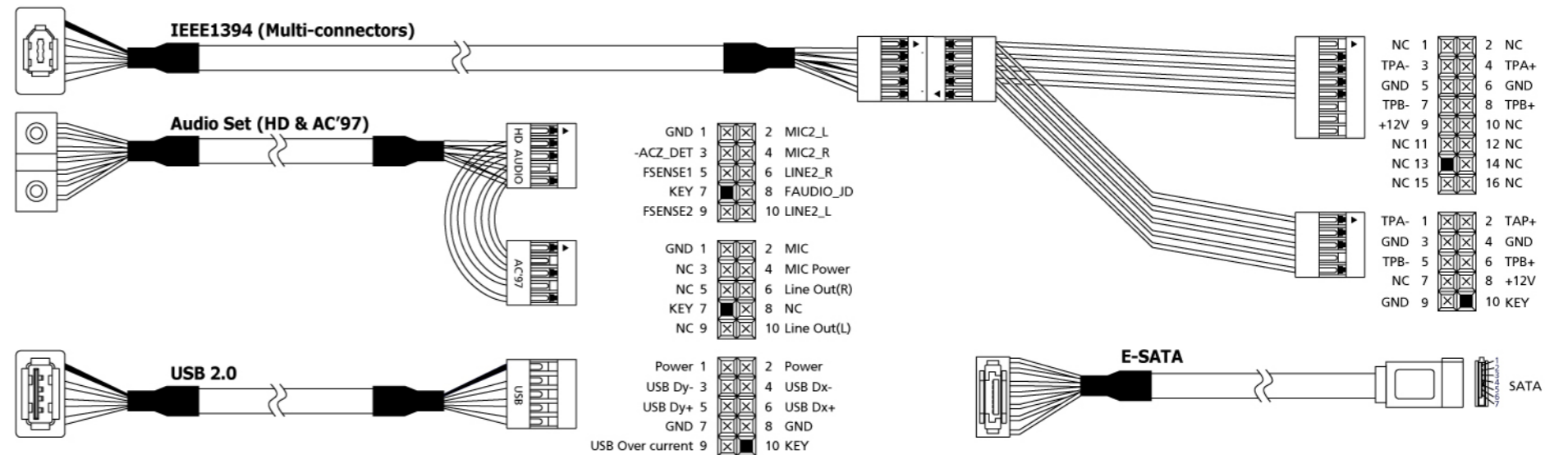


Step 3. Installation of Motherboard

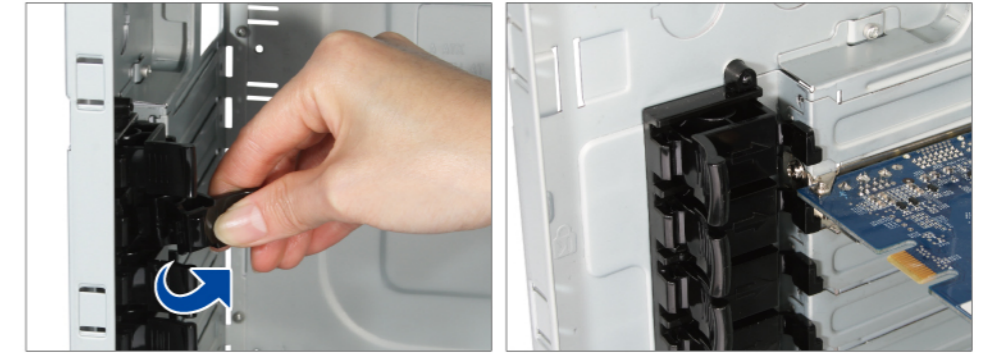
Motherboard	Code name	Motherboard screws	Case copper post
ATX	A (9 Mounting holes)	9	9
Micro ATX	M (8 Mounting holes)	8	8



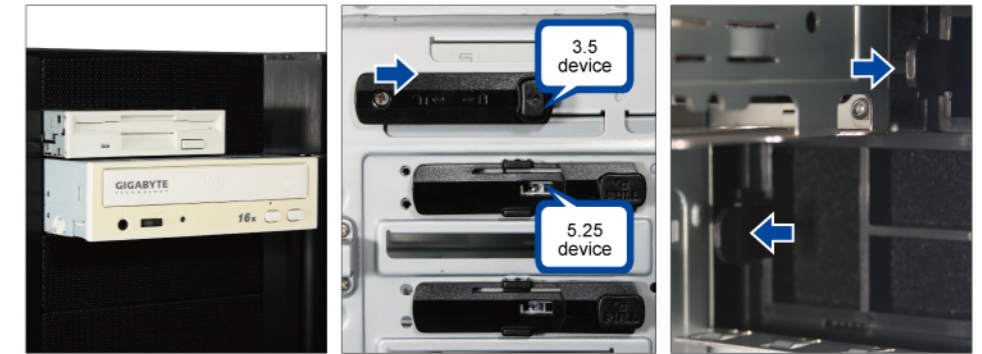
Step 4. Installation of Front I/O port



Step 5. Installation of Add-on Card



Step 6. Installation of 5.25" & 3.5" External Driver Bay



CAUTION (Note: to install of 5.25" / 3.5" external drives, please remove the EMI plate of chassis prior to installation. Upon sliding the 5.25" device into the drive bay, the tool-less mechanism will automatically lock and secure the device. To remove the 5.25" device, pull and hold the tool-less mechanism and remove the 5.25" device.)

Step 7. Installation of 3.5" Internal Driver Bay

