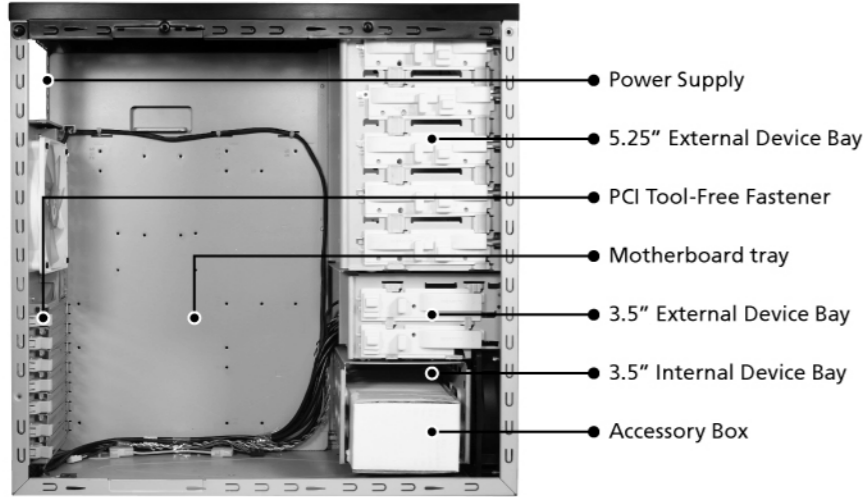


# GIGABYTE™

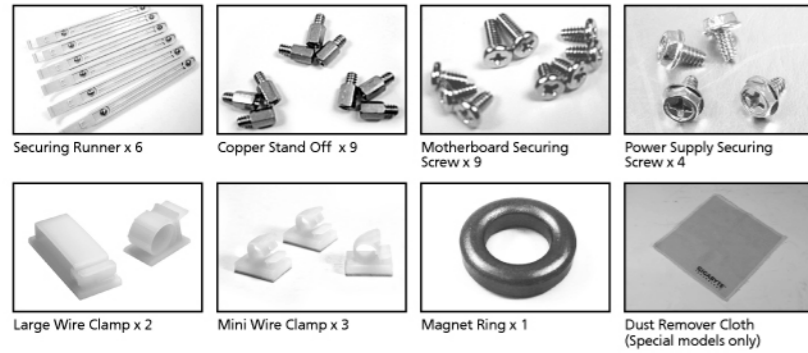
**CAUTION** Product is not warranted if the products is modified, altered or repaired without authorization by GIGABYTE. Specifications and pictures are to change without notice. Different motherboards have different installation areas and specifications, screw holes and connectors. For detailed instructions, please refer to the motherboard user manual supplied by the motherboard manufacturer.

## Casing's Internal Structure



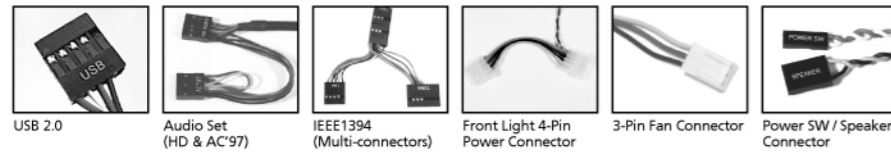
## Accessory Box

(Refer to the figures below for the attachments in the accessory box)

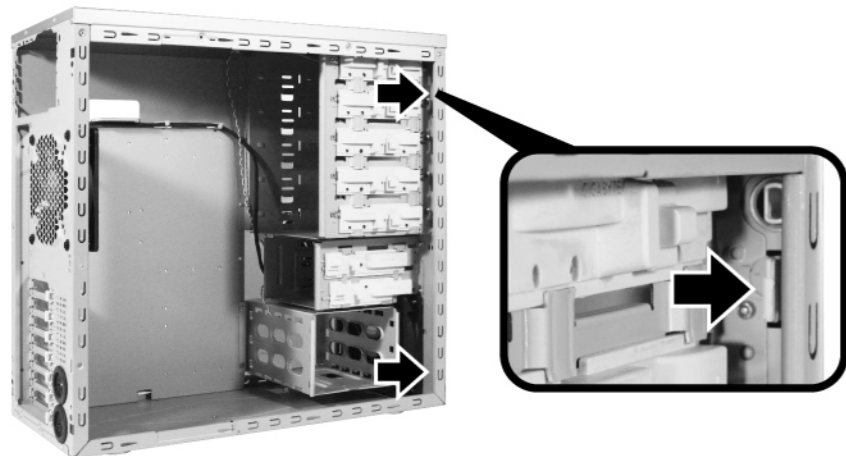


## Cable Kit

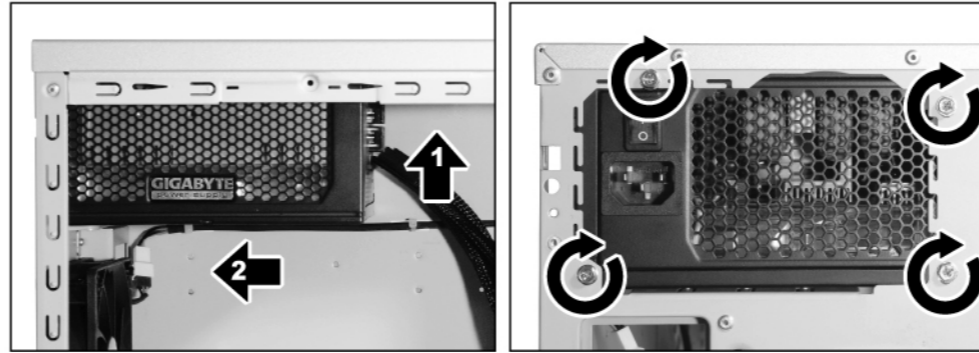
(Refer to the figures below for the cable connectors)



## Step 1. Removal of Side and Front Panel

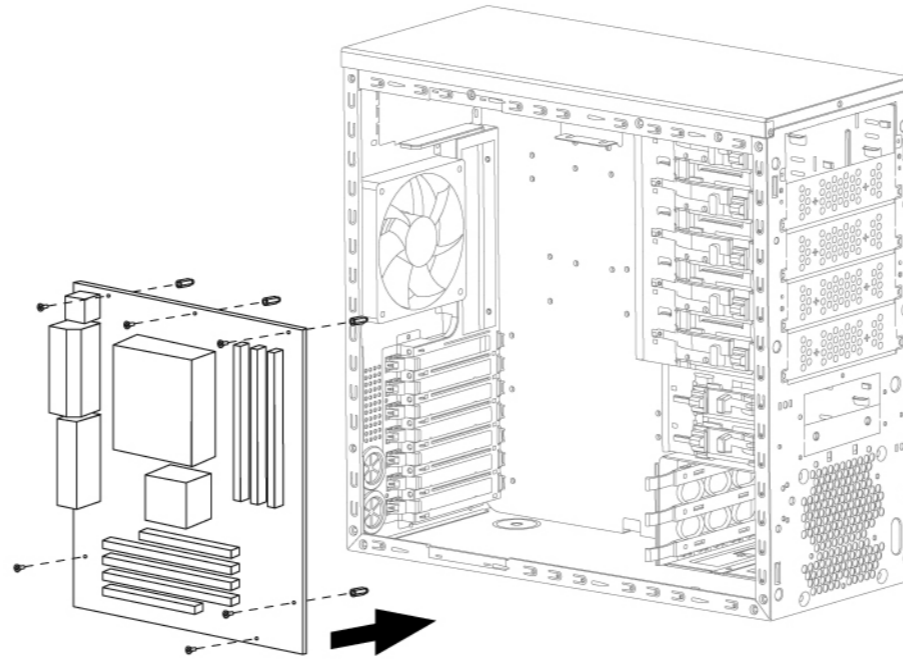


## Step 2. Installation of Power Supply

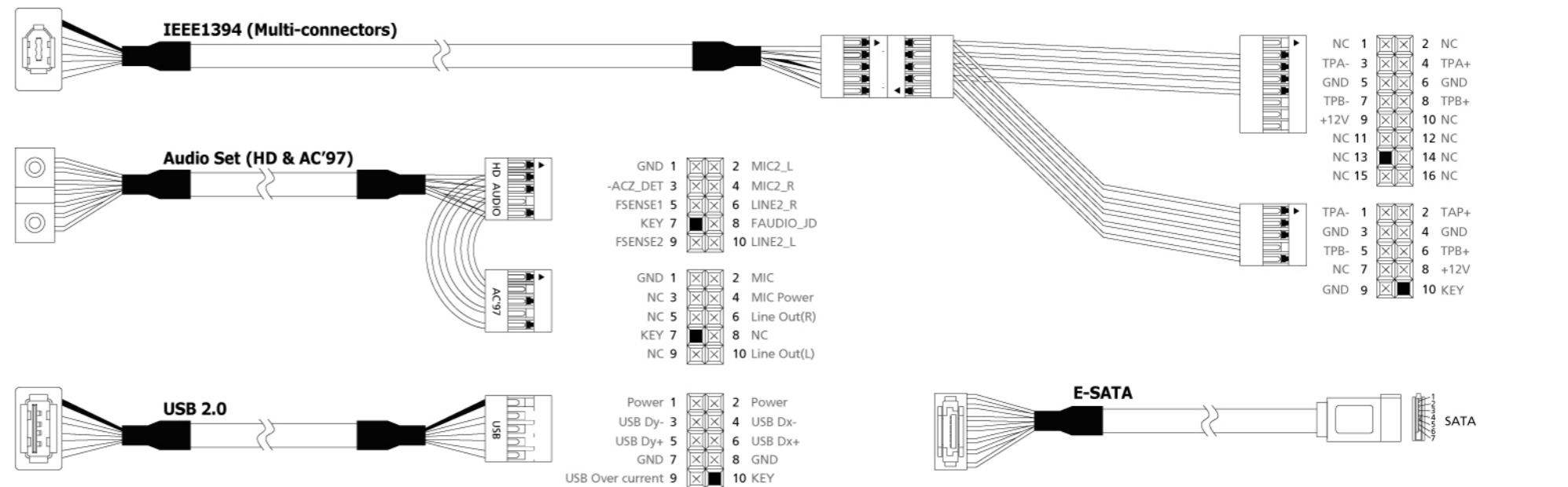


## Step 3. Installation of Motherboard

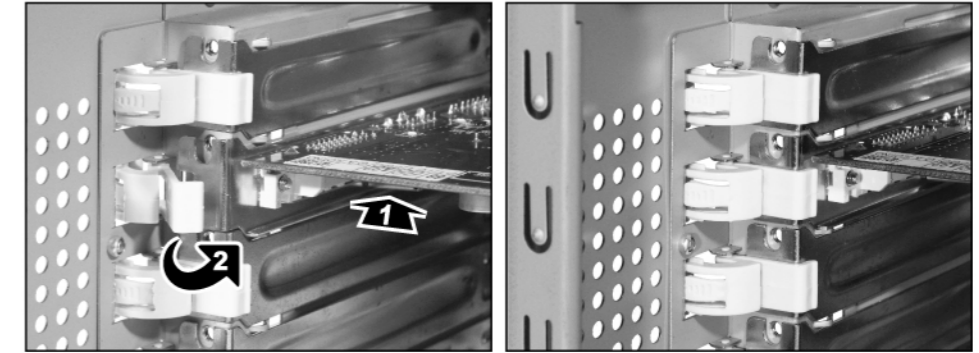
Motherboard	Code name	Motherboard screws	Case copper post
ATX	A1-A9	9	9
Micro ATX	U1-U9	9	9
Flex ATX	F1-F6	6	6



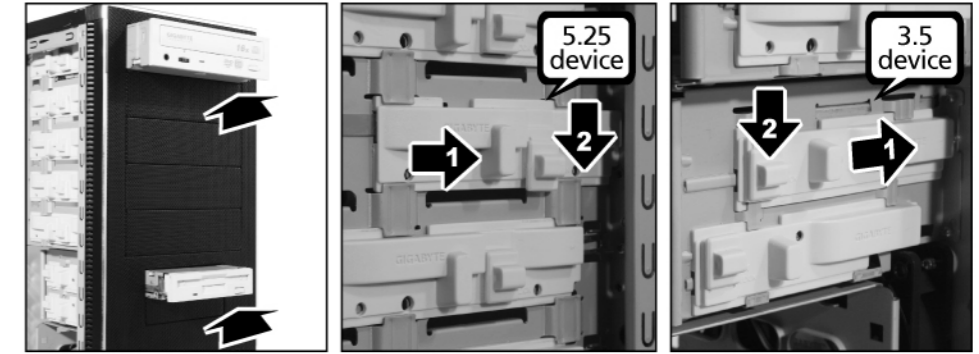
## Step 4. Installation of Front I/O port



## Step 5. Installation of Add-on Card



## Step 6. Installation of 5.25" & 3.5" External Driver Bay



## Step 7. Installation of 3.5" Internal Driver Bay

