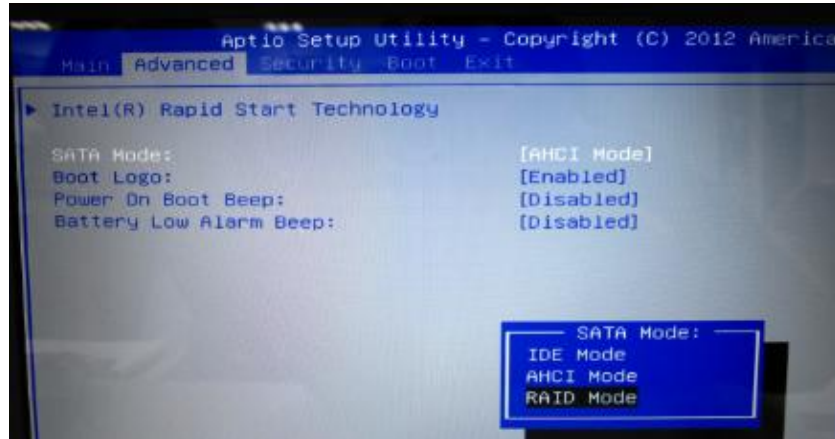


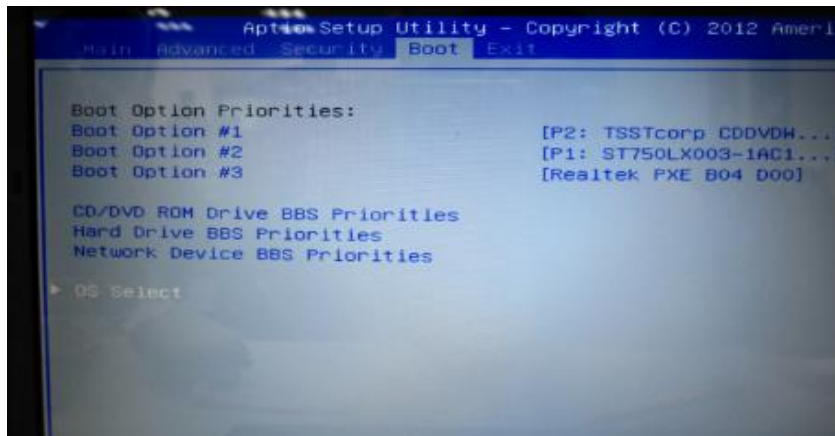
How To Setting RAID

1. BIOS Setting

持續按著<F2>進入 BIOS 設定[Advance]→ SATA Mode → RAID Mode 按下 enter 確認
press <F2> entry BIOS setting [Advance]→ SATA Mode → choose RAID Mode



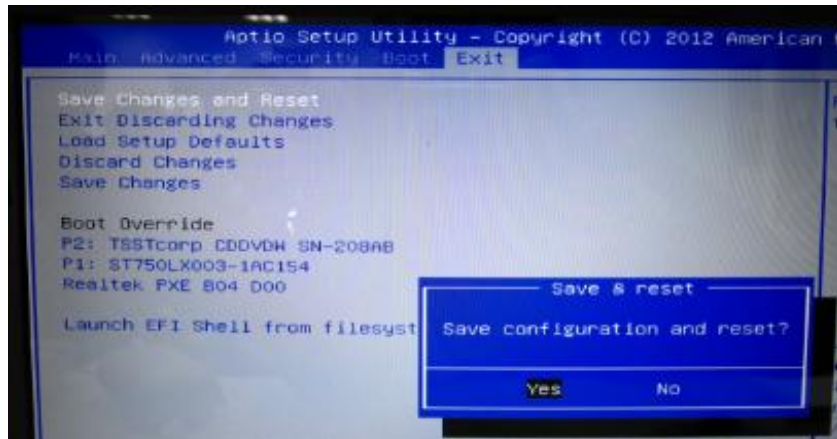
再進入到[Boot] → OS Select → Others
After that entry [Boot] → OS Select → Others
(PIC-1)



(PIC-2)



最後進入[Exit] → Save Changes and Reset → YES (離開此畫面)
Finally, entry [Exit] → Save Changes and Reset → YES (exit this page)



2. 進入 RAID BIOS，設定 RAID 模式 Entry RAID BIOS，Setting RAID mode

若要製作 SATA 硬碟的磁碟陣列，必須進入 RAID BIOS 設定 SATA RAID 模式。
(若不製作 RAID，可以跳過此步驟。)

Enter the RAID BIOS setup utility to configure a RAID array.
(Skip this step and proceed with the installation of Windows operating system for a non-RAID configuration.)

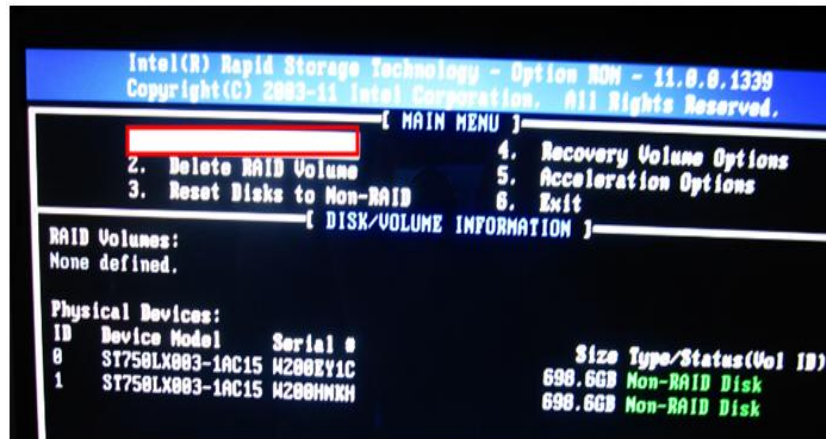
1. 在 BIOS POST 畫面後，進入作業系統之前，會出現如以下的畫面，按<Ctrl> + <I> 鍵即可進入 RAID BIOS 設定程式。

After the POST begins and before the operating system boot begins, look for a message which says "Press <Ctrl-I> to enter Configuration Utility"
Press <Ctrl> + <I> to enter the RAID Configuration Utility.



2. 按下 <Ctrl> + <I> 後會出現 RAID 設定程式主畫面。建立磁碟陣列(Create RAID Volume) 在「Create RAID Volume」選項按<Enter>鍵來製作 RAID 磁碟。

After you press <Ctrl> + <I>, the MAIN MENU screen will appear. Create RAID Volume. If you want to create a RAID array, select Create RAID Volume in MAIN MENU and press <Enter>.



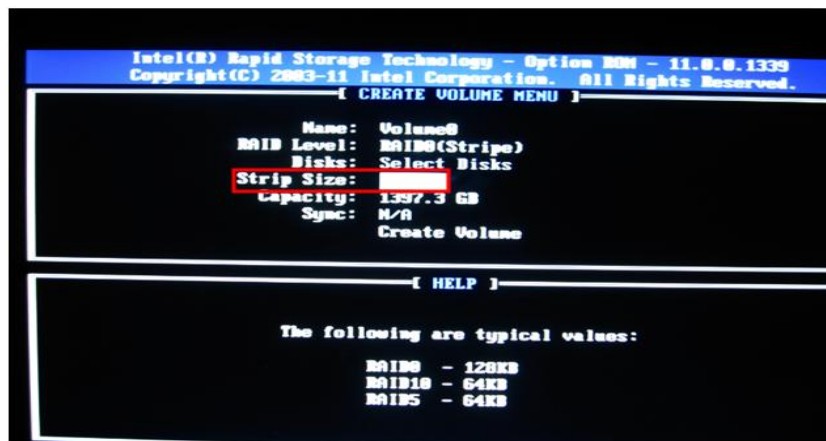
3. 進入「CREATE VOLUME MENU」畫面，可以在「Name」選項自訂磁碟陣列名稱，字數最多可至 16 個字母但不能有特殊字元，設定好後按<Enter>鍵。選擇要製作的 RAID 模式 (RAID Level) (如下圖)。RAID 模式選項有：RAID 0、RAID 1、Recovery (可選擇的 RAID 模式會依據所安裝的硬碟總數而定)。選擇好 RAID 模式後，再按<Enter>鍵繼續進行後面的步驟。

After entering the [CREATE VOLUME MENU] screen, enter a volume name with 1~16 letters (letters cannot be special characters) under the Name item and press <Enter>. Then, select a RAID level. RAID levels supported include RAID 0, RAID 1, Recovery (the selections available depend on the number of the hard drives being installed). Press <Enter> to proceed.



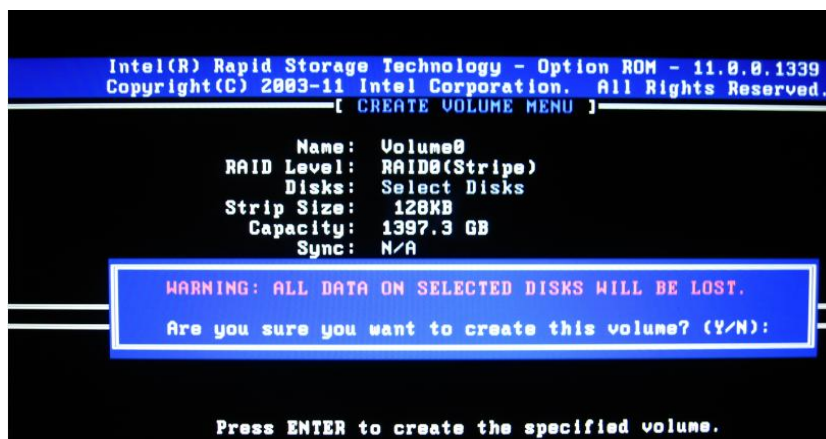
4. 在「Disks」選項選擇欲製作磁碟陣列的硬碟。若只有安裝兩顆硬碟，則此兩顆硬碟將被自動設為磁碟陣列。接下來請選擇磁碟區塊大小(Strip Size)，可調整大小從 4 KB 至 128 KB。設定完成後，再按<Enter>鍵設定磁碟陣列容量(Capacity)。

Under Disks item, select the hard drives to be included in the RAID array. If only two hard drives are installed, they will be automatically assigned to the array. Set the stripe block size if necessary. The stripe block size can be set from 4 KB to 128 KB. Once you have selected the stripe block size, press <Enter>.



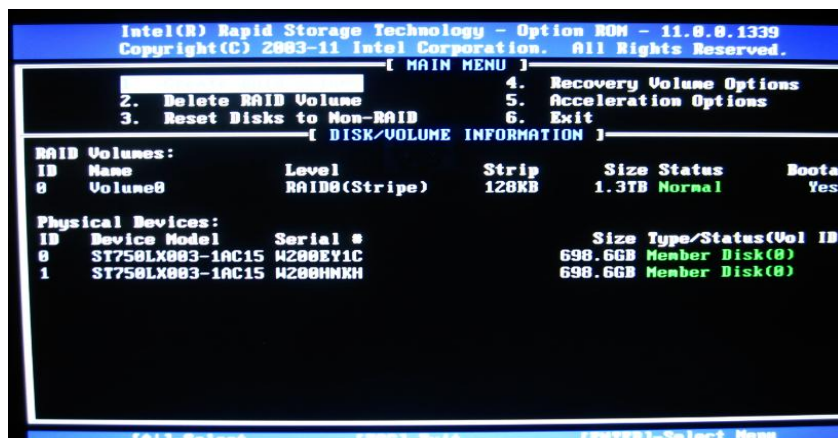
5.設定好磁碟陣列容量後，再按<Enter>鍵移至「Create Volume」(建立磁碟)選項。在「Create Volume」按下<Enter>鍵即可開始製作磁碟陣列。當確認訊息出現時，確定製作磁碟陣列請按<Y>，取消請按<N>。

Enter the array capacity and press <Enter>. Finally press <Enter> on the Create Volume item to begin creating the RAID array. When prompted to confirm whether to create this volume, press <Y> to confirm or <N> to cancel.



6.完成後在「DISK/VOLUME INFORMATION」即可看到建立好的磁碟陣列詳細資料，例如磁碟陣列模式、區塊大小、磁碟陣列名稱及磁碟陣列容量等。

When completed, you can see detailed information about the RAID array in the DISK/VOLUME INFORMATION section, including the RAID level, stripe block size, array name, and array capacity, etc.



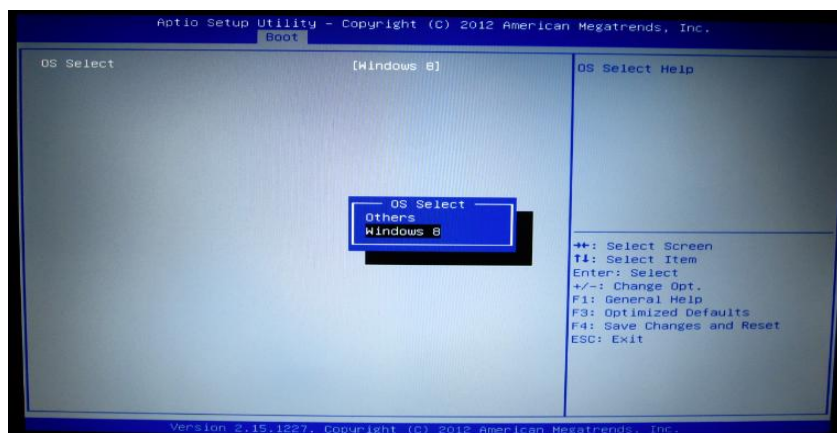
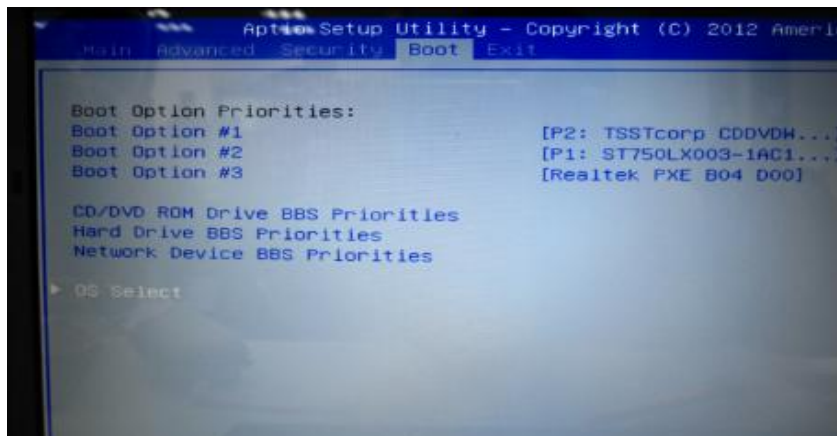
7.在主畫面按<Esc>鍵或選擇「6. Exit」再按<Enter>鍵即可離開此 RAID 設定程式。
按下來就可以進行作業系統的安裝了。

To exit the RAID BIOS utility, press <Esc> or select 6. Exit in MAIN MENU.
Now, you can proceed to install the SATA RAID/AHCI driver and operating system.

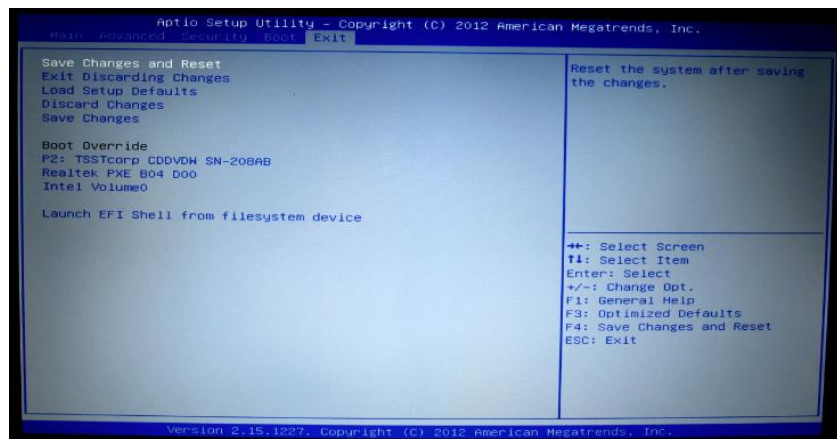
3.系統安裝(install OS)

1.用 USB 隨身碟將驅動程式存入，將系統(光碟片)與驅動程式(USB 隨身碟)分別裝置於筆電上
Please put the driver into USB storage. Then, put OS disc & USB on your NB.

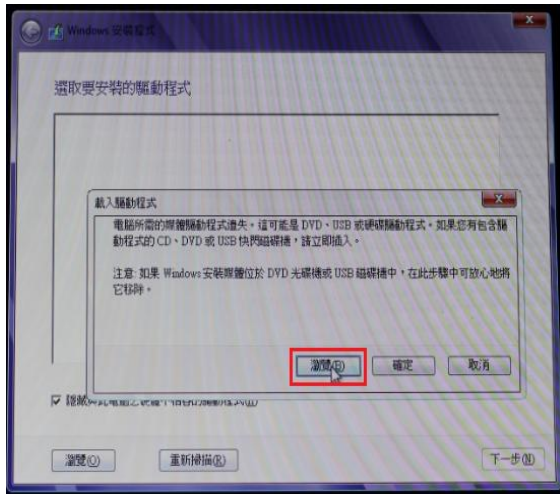
2.持續按著<F2>進入 BIOS 設定進入到[Boot] → OS Select → Windows 8
Continuous press <F2> entry BIOS into [Boot] → OS Select → Windows 8



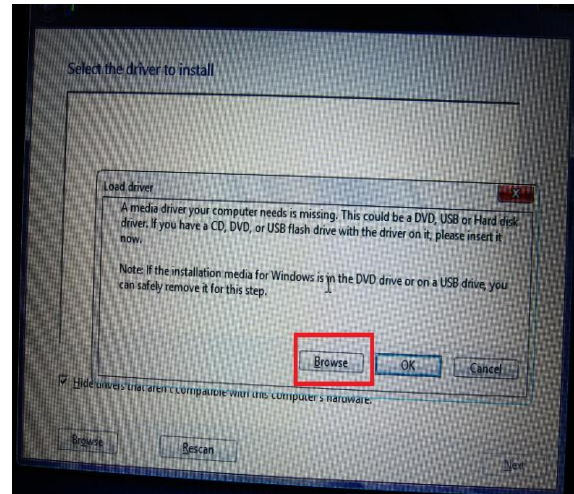
之後選擇“ ” EXIT” 下 選擇“ Save changes and Reset” 後離開
Finally, entry [Exit] → Save Changes and Reset → YES (exit this page)



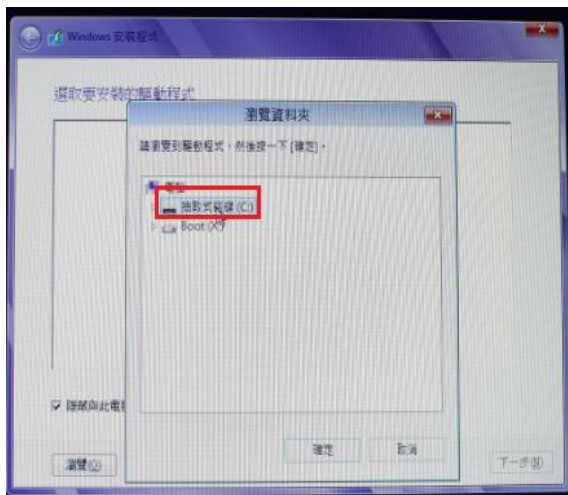
出現以下“選取要安裝的驅動程式”對話框 請選擇“瀏覽”



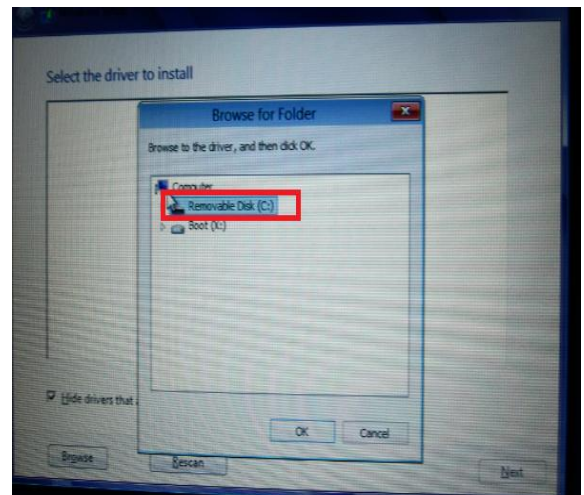
It will show" Select the driver to install" and choose " Browse"



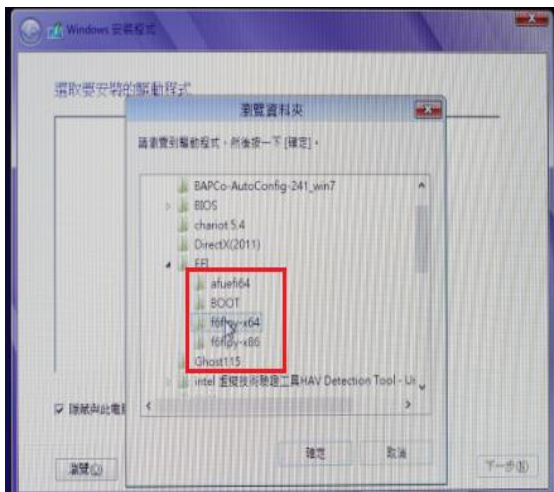
請選擇“ 抽取式硬碟” 後按 ok.



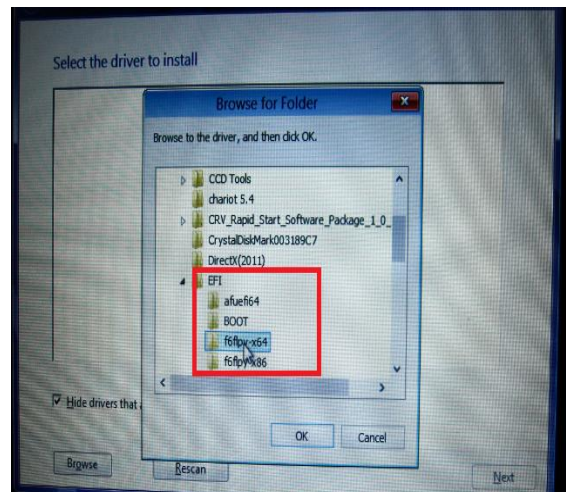
Choose "Removable Disk" and press ok



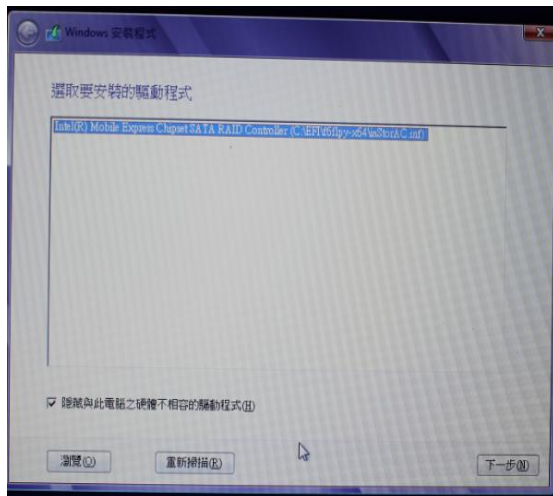
選擇“ EFI” 目錄中的 f6flpy x64 後按 Next



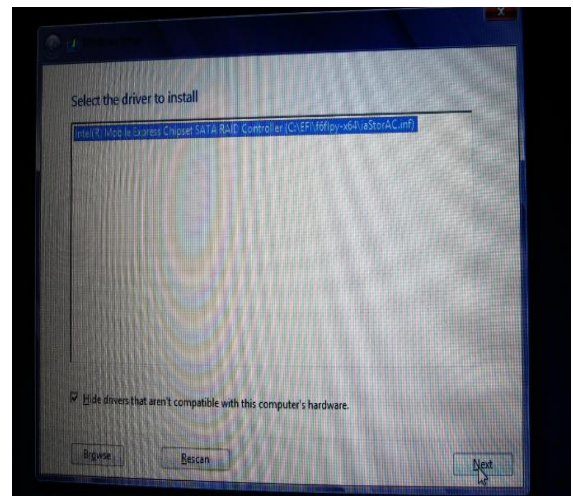
Choose "EFI" →f6flpy x64 and press Next



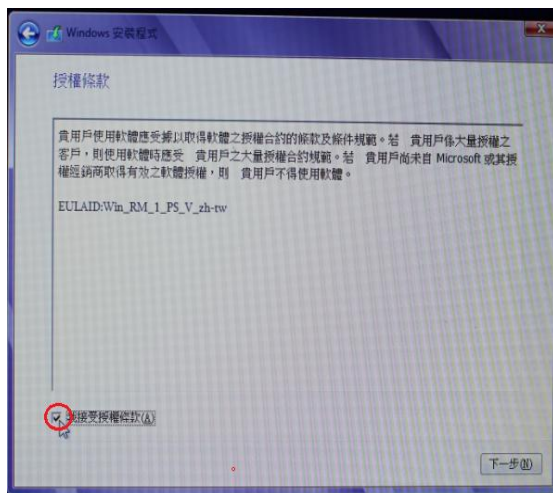
出現以下的訊息後 再按“ Next”



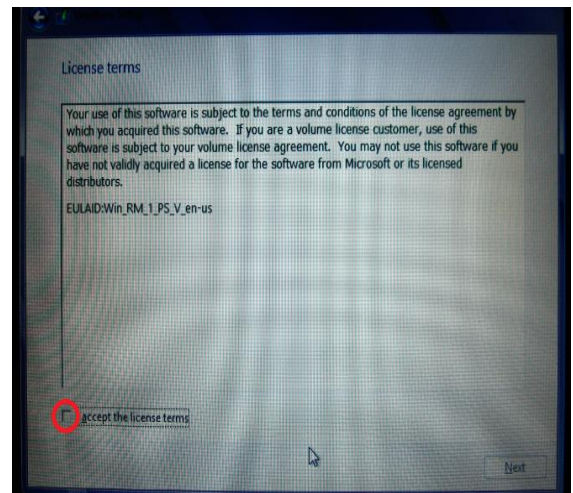
Press “Next”



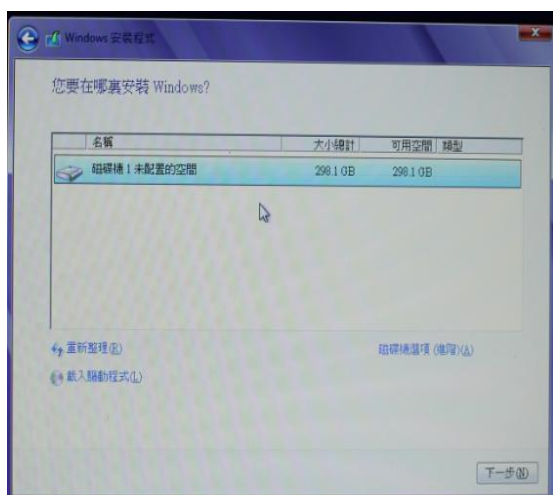
請選擇“ 我接受授權條款”



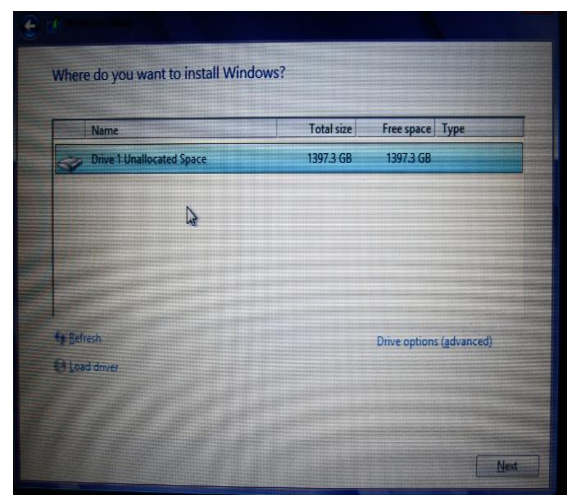
Choose “ I accept the license terms”



畫面出現“ 你要在哪裡安裝 windows”
後按 Next. 電腦將開始執行安裝 OS 指令



When it show “ where do you want to
install windows” press <Next> and it will
start to install OS.



4. 清除磁碟陣列 (Delete RAID Volume)

若要清除已建立的磁碟陣列，請在主畫面選擇「Delete RAID Volume」選項，當「DELETE VOLUME MENU」畫面出現時，以方向鍵選擇欲刪除的磁碟陣列並按下<Delete>鍵。當確認訊息出現時，確定刪除磁碟陣列請按<Y>，取消請按<N>。

To delete a RAID array, select Delete RAID Volume in MAIN MENU and press <Enter>. In the DELETE VOLUME MENU section, use the up or down arrow key to select the array to be deleted and press <Delete>. When prompted to confirm your selection, press <Y> to confirm or <N> to abort.



About GIGABYTE *Upgrade Your Life*

GIGABYTE, headquartered in Taipei, Taiwan, is known as a global leading brand in the IT industry, with employees and business channels in almost every country. Founded in 1986, GIGABYTE started as a research and development team and has since taken the lead in the world's motherboard market. On top of motherboards and graphics accelerators, GIGABYTE further expanded its product portfolio to include notebook and desktop PCs, digital home entertainment appliances, networking servers, communications, mobile and handheld devices, servicing every facet of people's lives at home or business. Everyday GIGABYTE aims to "Upgrade Your Life" with the most innovative designs and impeccable quality and services. Visit www.gigabyte.com for more information.