

## [HOW-TO] How to Install and Configure

### Intel Configuration Center and Intel Always-Aware

PUBLISHED FROM GIGABYTE

#### [HOW-TO]

- ✓ You will learn how to install Intel Configuration Center and Always-Aware.
- ✓ You will learn to set Intel Configuration Center and Always Aware on your laptop.
- ✓ System hotkeys will be enabled after Configuration Center installed complete.

#### [Tool kit]

Intel Configuration Center

Intel Always-Aware

#### [STEP – Download and Install Configuration Center and Always-Aware]

1. Download Intel Configuration Center from Official Web Site of Laptop.

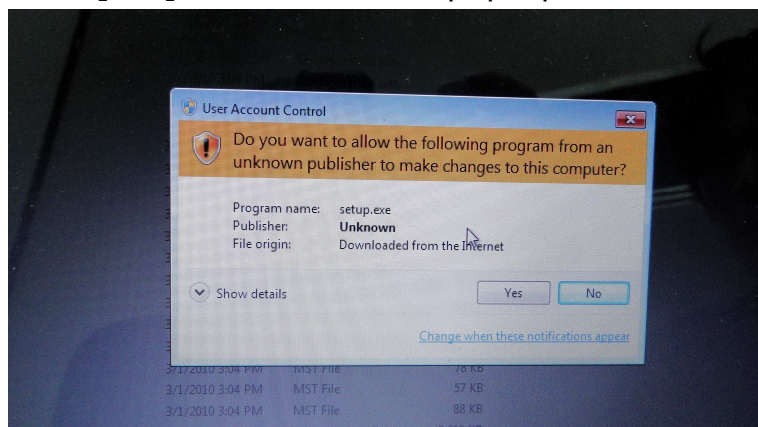
*Note: Please download 64bit Version for 64bit platform.*

2. Unzip the package.(nb-driver-i1320-win7-32-configuration-center.zip)

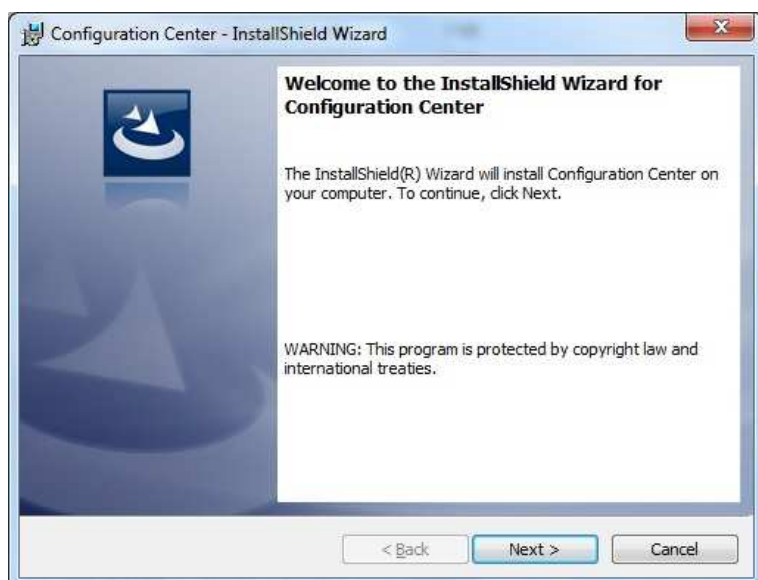
*Note: The package for 64bit should be named as nb-driver-i1320-win7-64-configuration-center.zip*

3. Run Configuration Center Setup(Setup.exe) under the path you just unzip the package.

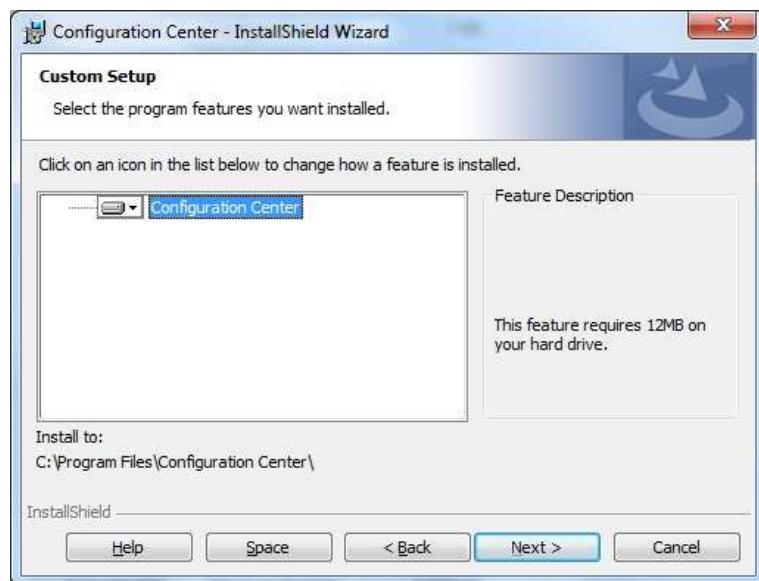
4. Click [Yes] while UAC alert pop-up.



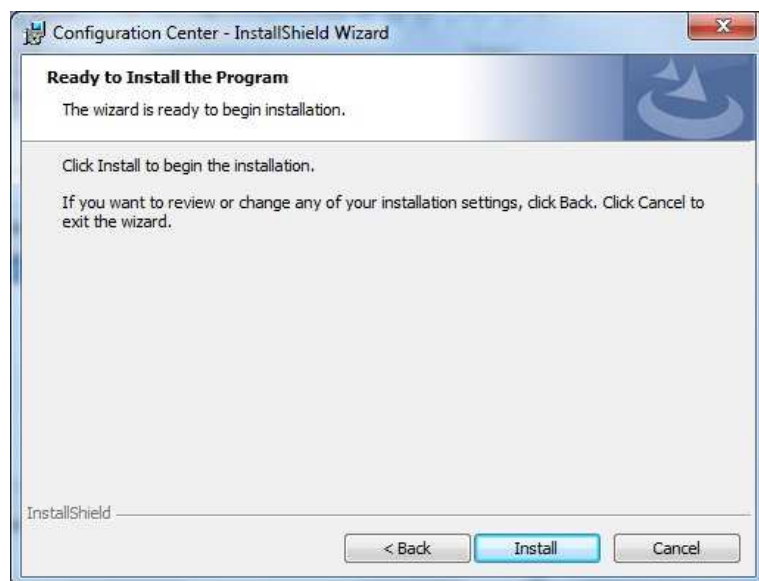
5. Click [Next>] on "Welcome to the InstallShield Wizard for Configuration Center"



6. Click [Next>] on “Custom Setup” Step.



7. Click [Install] on “Ready to Install the Program” Step.



8. Wait for setup progress complete. Click [Finish] on "InstallShield Wizard Completed" dialog.



9. Click [Yes] to restart your computer.



10. Download Intel Always-Aware from Official Web Site of Laptop.

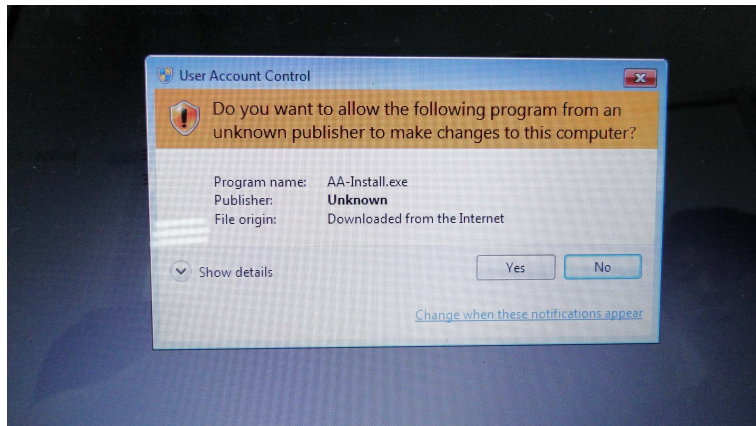
*Note: Please download 64bit Version for 64bit platform.*

11. Unzip the package.(nb-driver-i1320-win7-32-always-aware.zip)

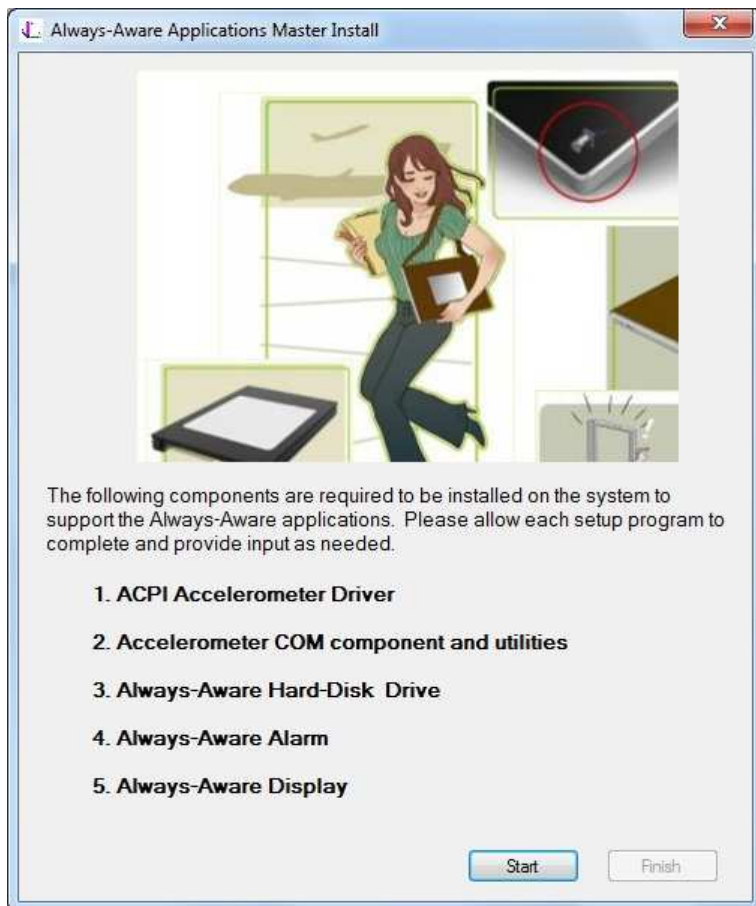
*Note: The package for 64bit should be named as nb-driver-i1320-win7-64-always-aware.zip*

12. Run Setup(AA-Install.exe) in the path you just unzip the package.

13. Click [Yes] while UAC alert pop-up.

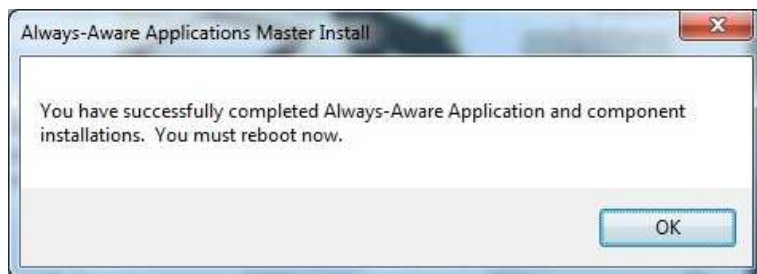


14. Click [Start] while "Always-Aware Application Master Install" dialog appear.

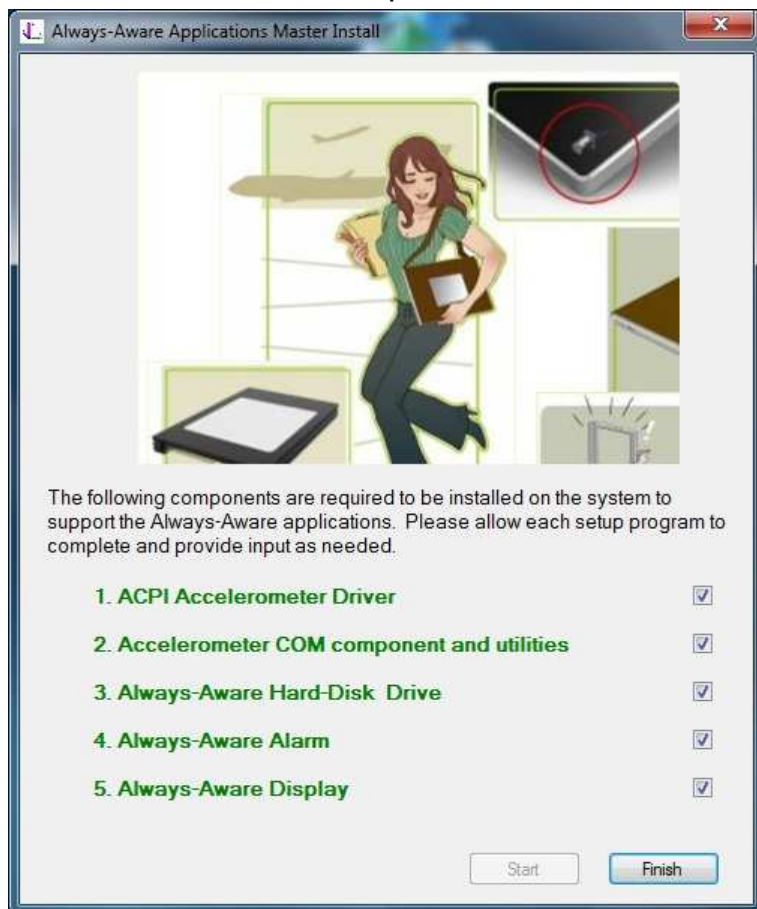


15. Setup process will run all component installation automatically, please wait until it complete.

16. Click [OK] while the setup process complete dialog appears.



17. Please check if all components installed correctly(as picture), Click [Finish].

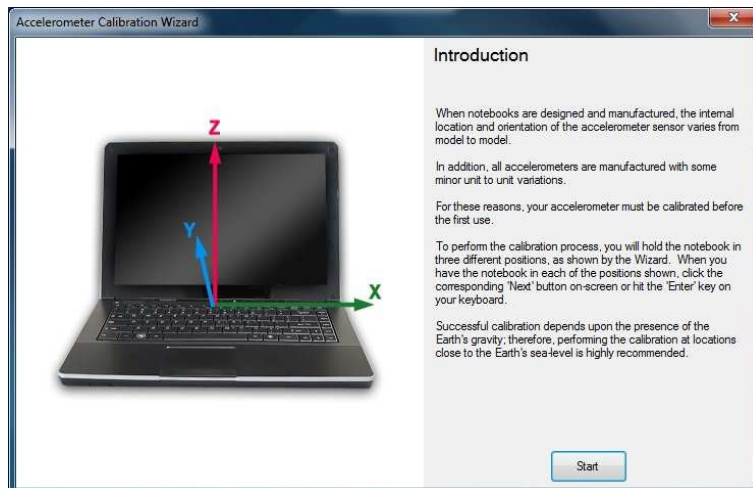


18. Restart computer manually.

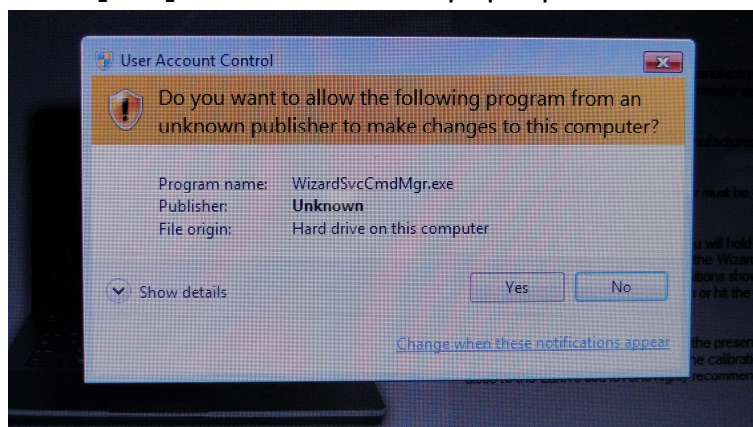


## [STEP – Configure Intel Always Aware]

1. "Accelerometer Calibration Wizard" will run automatically after you install Always-Aware Application. Click [Start] to start setup process.



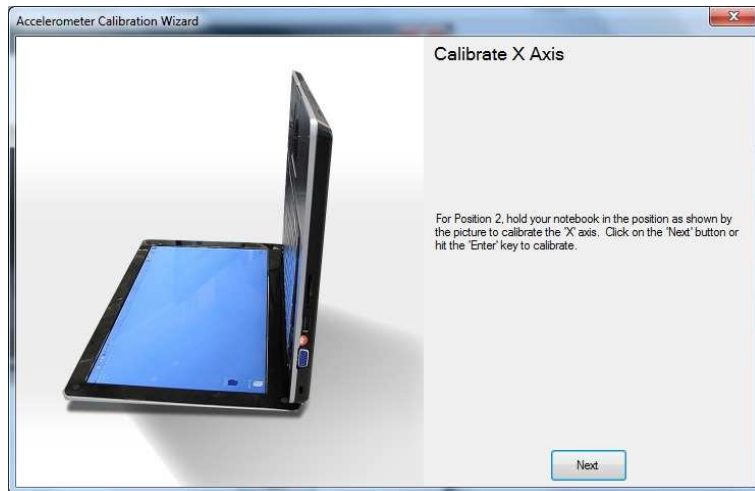
2. Click [Yes] while UAC alert pop-up.



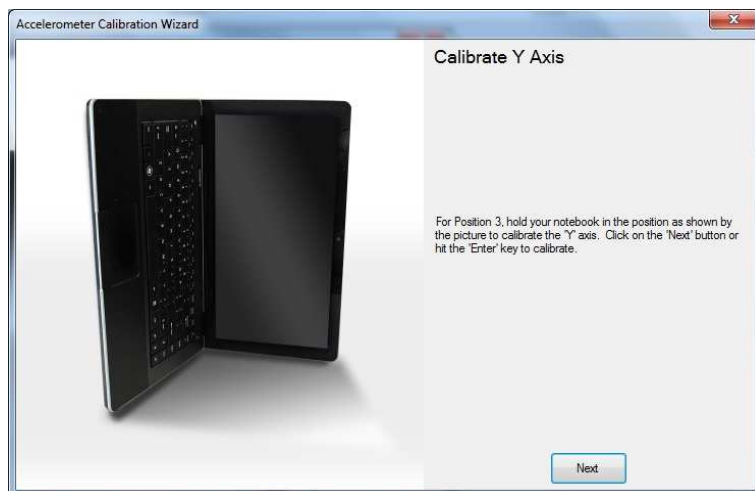
3. Put your laptop as "Calibrate Z Axis" step request, then click [Next].



4. Put your laptop as “Calibrate X Axis” step request, then click [Next].



5. Unplug AC adapter and put your laptop as “Calibrate Y Axis” step request, then click [Next].

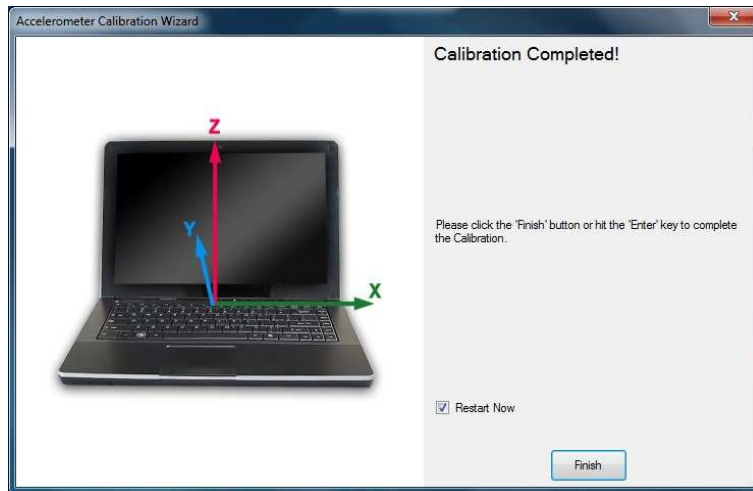


**NOTE: Please remember unplug your AC Adapter before rotate your laptop!!!**



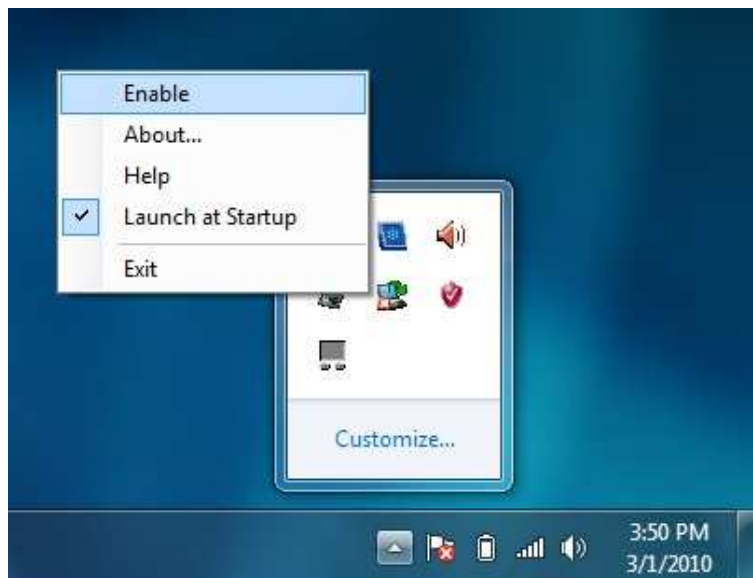


6. Click [Finish] on "Calibration Completed!" step.

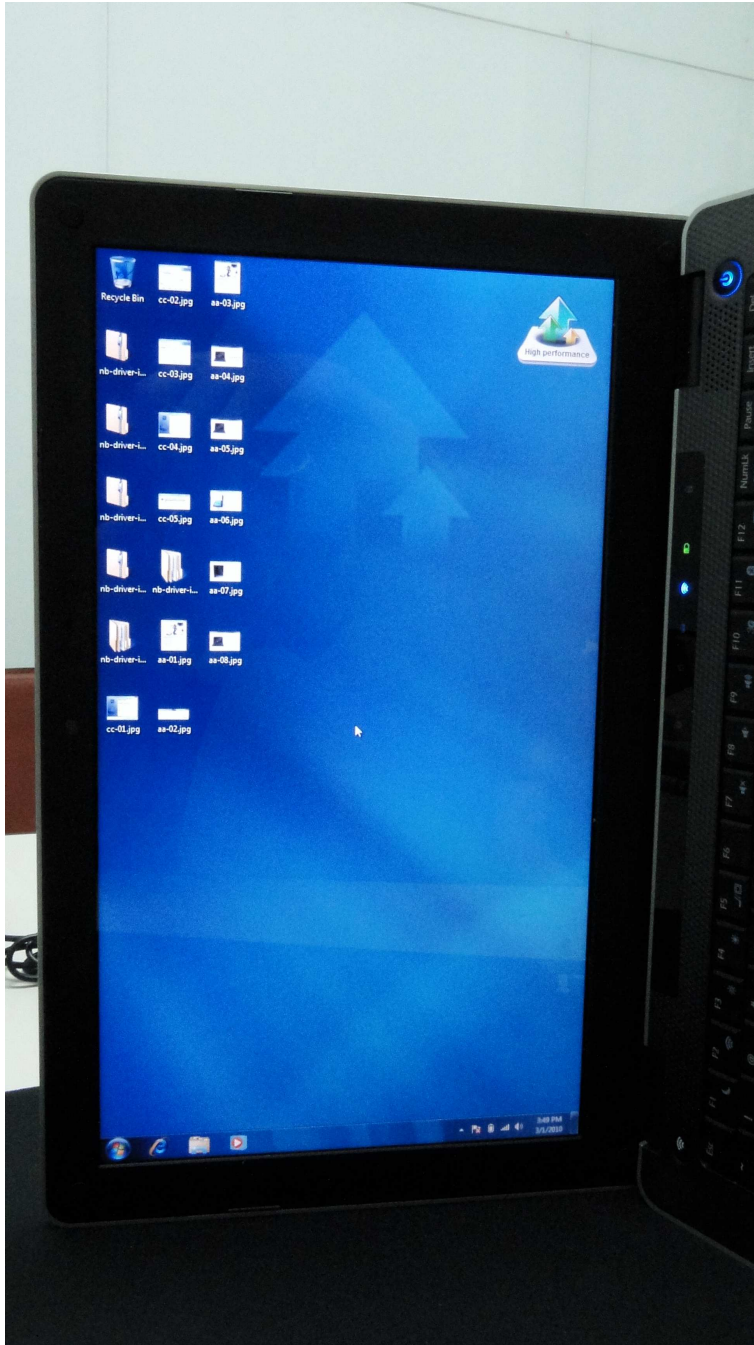


7. Setup process will restart laptop automatically after few seconds.

8. Always-Aware display is disabled by default. Please right click on the tray-icon and enable it.

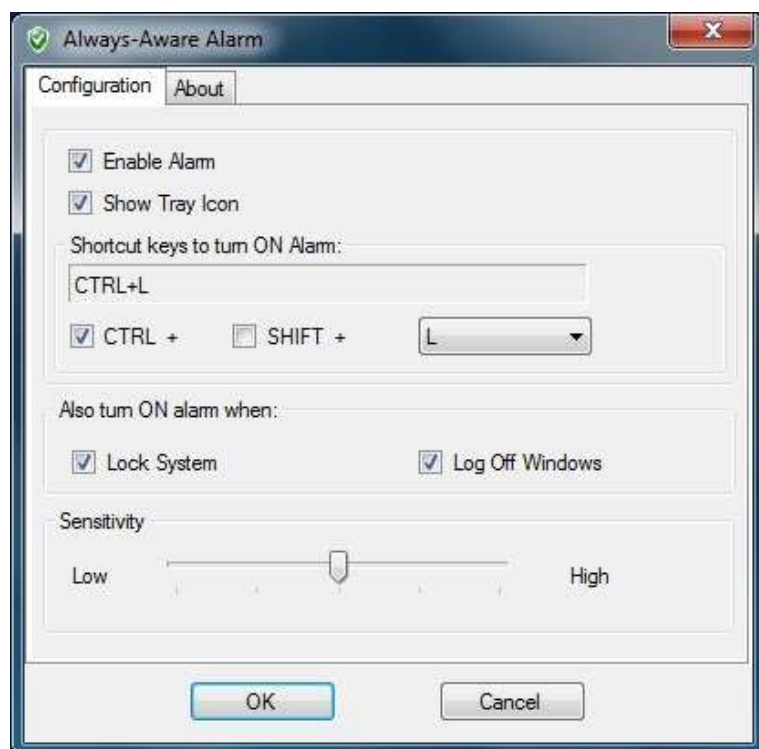


*Note: After Always-Aware Display is enabled. Screen will rotate automatically while you rotate the laptop.*



9. Launch Always-Aware Alarm configuration utility from [Start] > [All Programs] > [Always-Aware Application] > [Always-Aware Alarm] > Always-Aware Alarm

10. Check "Enable Alarm" to enable Always-Aware Alarm.



11. After Always-Aware Alarm is enabled, system will beep while your machine is moving.

## [STEP – Configure Intel Configuration Center]

1. Intel Configuration Center is integrated with Windows Mobility Center to manage your devices.



2. Configuration Center Gadget will be located on your desktop after you install it.



3. Click on the gadget will bring-up Configuration Center.

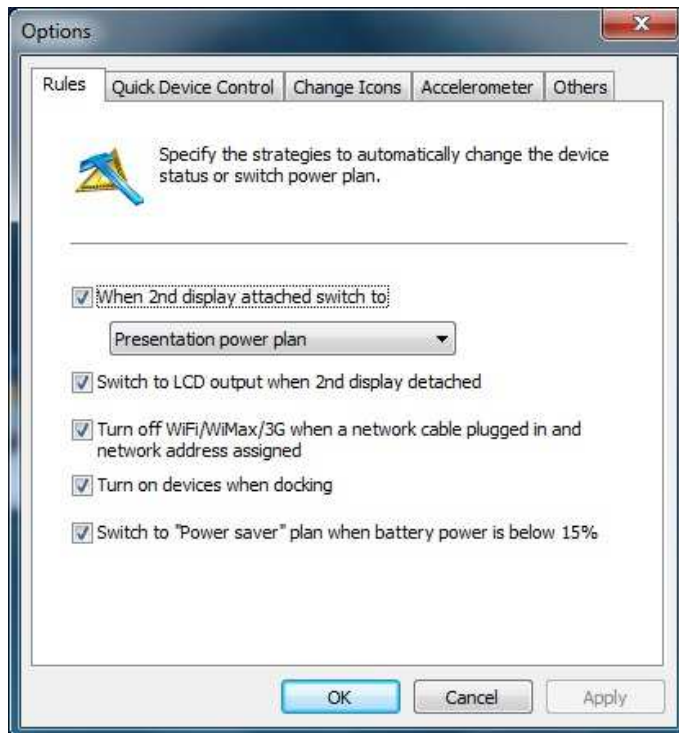


4. Configuration will show all Power Plan as default.

5. Click on the setting icon to open toolbar menu, select [Options]

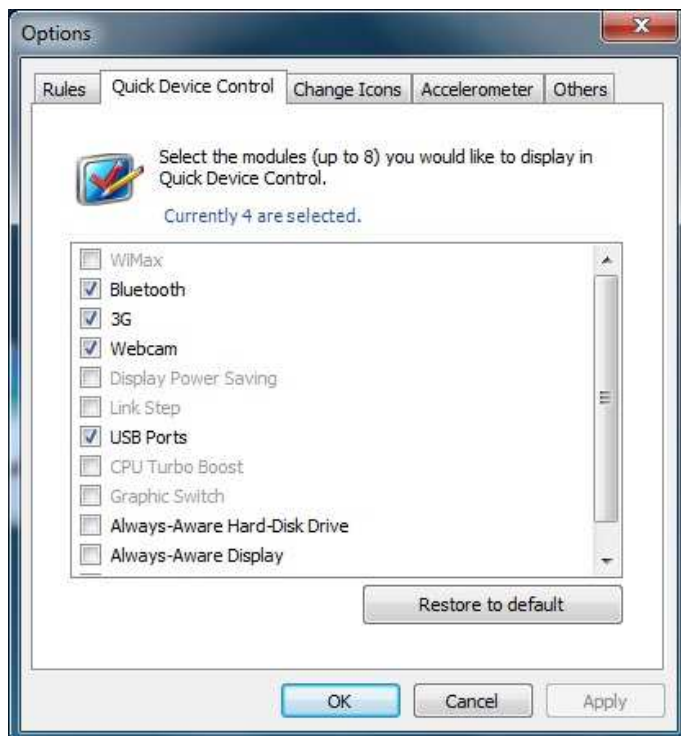


6. In "Rules" tab, you can choose the power plan you want use hen 2nd display is connected to your laptop.





7. In "Quick Device Control" tab, you can add the devices to Windows Mobility Center for quick management. (Max to 8 devices)



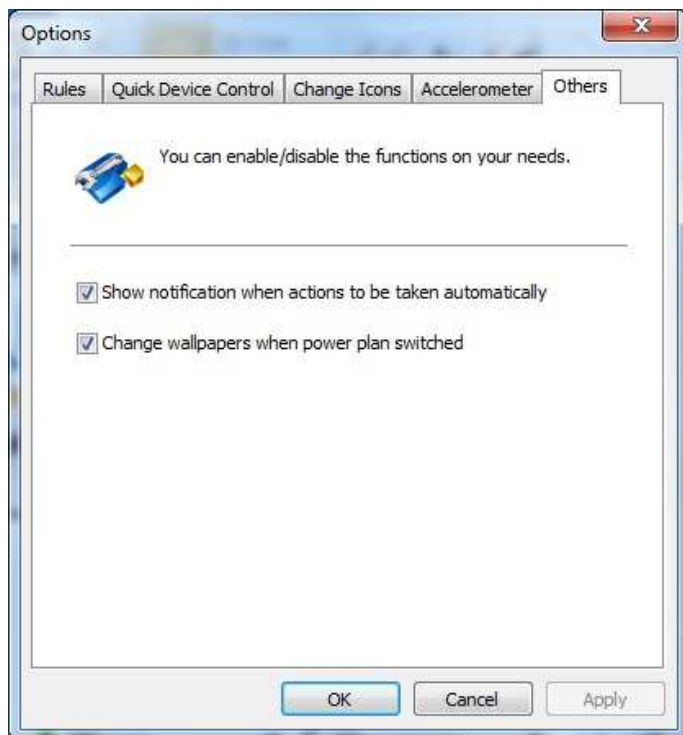
8. In "Change Icons" tab, you can change the icons for each power plan displayed in Configuration center.



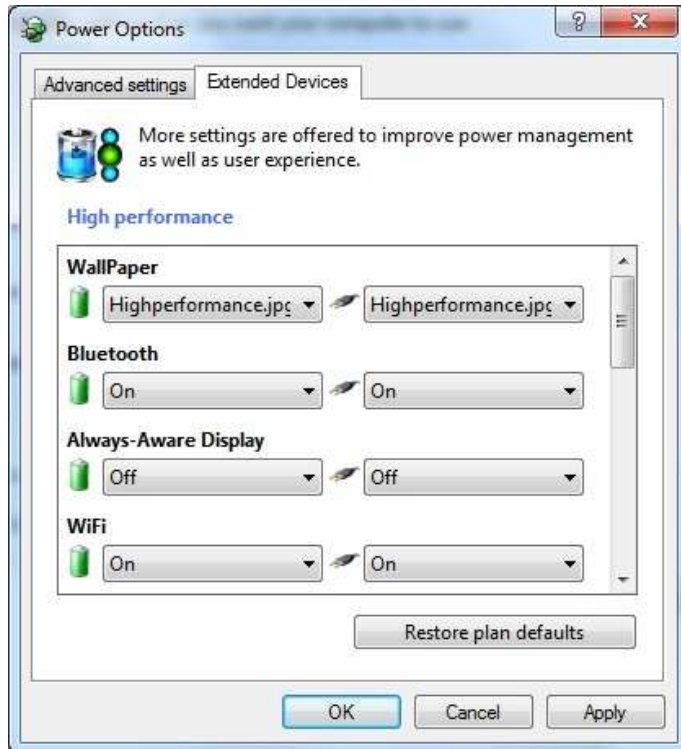
9. In "Accelerometer" tab, you can calibrate Accelerometer again by click [Start...]. And turn Always-Aware features on.



10. You can choose to change Wallpaper for each Power Plan and if you want see the notification in "Others" tab.



11. You can define wallpaper for each Power Plan and device status in [Control Panel] \ [Power Options] \ [Change Plan Settings] \ [Change advanced power settings] \ [Extended Devices]



## About GIGABYTE *Upgrade Your Life*

GIGABYTE, headquartered in Taipei, Taiwan, is known as a global leading brand in the IT industry, with employees and business channels in almost every country. Founded in 1986, GIGABYTE started as a research and development team and has since taken the lead in the world's motherboard market. On top of motherboards and graphics accelerators, GIGABYTE further expanded its product portfolio to include notebook and desktop PCs, digital home entertainment appliances, networking servers, communications, mobile and handheld devices, servicing every facet of people's lives at home or business. Everyday GIGABYTE aims to "Upgrade Your Life" with the most innovative designs and impeccable quality and services. Visit [www.gigabyte.com.tw](http://www.gigabyte.com.tw) for more information.